

X
X
X
X
X
X
X
X
X
X
X
X
X
X

NEVA



FUSIONS

by AGF

FREE PATTERN

X X

NEVA



Sparkler FUSION

FABRICS DESIGNED BY AGFstudio



FUS-SK-1303
EVERLASTING BLOOMS SPARKLER



FUS-SK-1304
FROM WITHIN SPARKLER



FUS-SK-1308
STARBRIGHT SPARKLER



FUS-SK-1306
TROUVILLE ROUTES SPARKLER



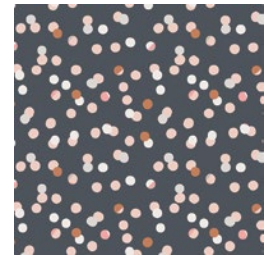
FUS-SK-1305
PINETREE SPARKLER



FUS-SK-1300
SPRINKLED PEONIES SPARKLER



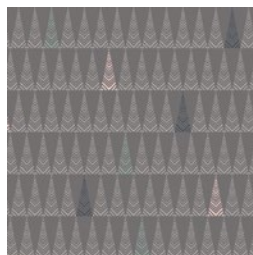
FUS-SK-1301
LITEN DITSY SPARKLER



FUS-SK-1307
CHADS SPARKLER



FUS-SK-1309
DOILAND GLOSS SPARKLER



FUS-SK-1302
TREE FARM SPARKLER





FINISHED SIZE | 17" x 17"

FABRIC REQUIREMENTS

Fabric A FUS-SK-1301 1 yd.
 Fabric B PE-472 1 yd.
 Fabric C FUS-SK-1306 1 yd.
 Fabric D DEN-L-40000 1 ½ yds
 Fabric E FUS-SK-1304 ½ yd.

BACKING FABRIC

Fabrics A, B, C, D, E - ½ yd

BINDING FABRIC

Fabric D (*Included*)

XX

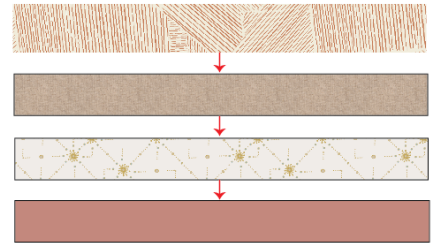


DIAGRAM 1

- Now, take your 21 ½" x 21 ½" square from Fabric A and pair it below Fabric B strip.

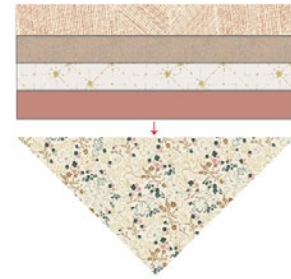


DIAGRAM 2

- Repeat the same instructions for the rest of the napkins.

CUTTING DIRECTIONS

¼" seam allowances are included.

- One (1) 21 ½" x 21 ½" square from Fabric A, B, C, E
- One (1) 30 ½" x 4" strip from Fabric A, C, D, E
- Two (2) 30 ½" x 3 ½" strip from Fabrics A, E
- Three (3) 30 ½" x 3 ½" strip from Fabric B
- One (1) 30 ½" x 3 ½" strip from Fabric C
- Four (4) 30 ½" x 3 ½" strip from Fabric D

CONSTRUCTION

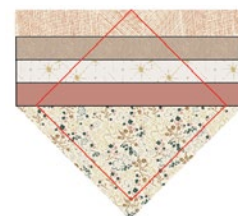
Sew all rights sides together with ¼" seam allowance.

- Pair one 30 ½" x 4" strip from fabric C with one 30 ½" x 3 ½" strip from Fabric D, then one 30 ½" x 3 ½" strip from Fabric E, then one 30 ½" x 3 ½" strip from Fabric B as in the following diagram

QUILT ASSEMBLY

Sew rights sides together.

- Place BACKING FABRIC on a large surface wrong side up. Stretch it with masking tape against that surface.
- Remember that you have four (4) different backing fabric on which you can match for your desired napkin
- Pin all layers together and baste with basting thread, using long stitches. You can also use safety pins to join the layers.
- Machine or hand quilt starting at the center and working towards the corners. Remember that quilting motifs are a matter of personal preference. Have fun choosing yours!
- After you finished, trim piece to an 17 ½" x 17 ½" square as the diagram below squaring the napkin to proceed to bind it.





BINDING

Sew rights sides together.

- Cut enough strips $1\frac{1}{2}$ ' wide by the width of the fabric **D** for each napkin, to make a final strip 78' long. Start sewing the binding strip in the middle of one of the sides of the napkin, placing the strip right side down and leaving an approximated 5' tail. Sew with $\frac{1}{4}$ ' seam allowance (using straight stitch), aligning the strip's raw edge with the napkin top's raw edge.
- Stop stitching $\frac{1}{4}$ ' before the edge of the quilt (**DIAGRAM B1**). Clip the threads. Remove the quilt from under the machine presser foot. Fold the strip in a motion of 45° and upward, pressing with your fingers (**DIAGRAM B2**). Hold this fold with your finger, bring the strip down in line with the next edge, making a horizontal fold that aligns with the top edge of the quilt (**DIAGRAM B3**). Start sewing at $\frac{1}{4}$ ' of the border, stitching all the layers. Do the same in the four corners of the quilt.
- Stop stitching before you reach the last 5 or 6 inches. Cut the threads and remove the quilt from under the machine presser foot. Lay the loose ends of the binding flat along the quilt edge, folding the ends back on themselves where they meet. Press them together to form a crease. Using this crease as the stitching line, sew the two open ends of the binding with right sides together (you can help yourself marking with a pencil if the crease is difficult to see).
- Trim seam to $\frac{1}{4}$ ' and press open. Complete the sewing. Turn binding to back of the quilt, turn raw edge inside and stitch by hand using blind stitch.



artgalleryfabrics.com

NOTE: While all possible care has been taken to ensure the accuracy of this pattern, We are not responsible for printing errors or the way in which individual work varies. Please read instructions carefully before starting the construction of this quilt. If desired, wash and iron your fabrics before starting to cut.

© 2018 Courtesy of Art Gallery Quilts LLC. All Rights Reserved.

