

Leaf





DESIGNED BY AGF STUDIO



FABRICS DESIGNED BY BONNIE CHRISTINE



FOLK & FLORA



GTH-37500
FORAGED GARLAND PEONY



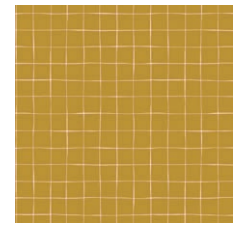
GTH-37509
SIMPLE LIVING



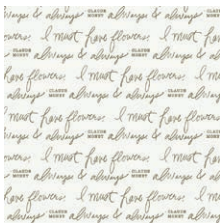
GTH-37507
FLORET ROOST PETAL



GTH-37504
COLLECTED STEMS BRIGHT



GTH-37506
AERIAL CLAY



GTH-37503
ALWAYS & ALWAYS THYME



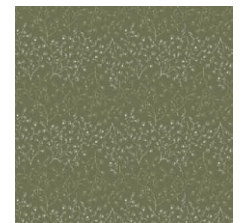
GTH-37501
BRISTLING DELICATE



GTH-37505
SWEET HARVEST OLIVE



GTH-37502
UNRULY TERRACE EARTH

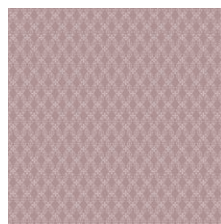


GTH-37508
VERDURE FIELD

PRESSED FLOWERS



GTH-47500
FORAGED GARLAND GOLDEN



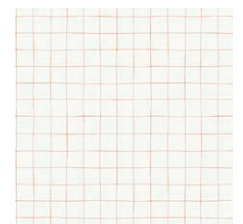
GTH-47510
CULTIVATED



GTH-47507
FLORET ROOST DELIGHT



GTH-47504
COLLECTED STEMS DUSTY



GTH-47506
AERIAL BLUSH



GTH-47503
ALWAYS & ALWAYS LUMINANCE



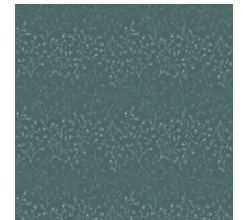
GTH-47501
BRISTLING BALMY



GTH-47505
SWEET HARVEST RARE



GTH-47502
UNRULY TERRACE SHADE



GTH-47508
VERDURE SPRUCE



FEEL THE DIFFERENCE © 2018 Courtesy of Art Gallery Quilts LLC. All Rights Reserved.



FINISHED SIZE | 10' x 9.5'

FABRIC REQUIREMENTS

Block 1

Fabric A	GTH-37508	½ yd.
Fabric B	GTH-37509	⅓ yd.
Fabric C	GTH-47501	FQ.

Block 2

Fabric A	GTH-47500	½ yd.
Fabric B	PE-433	⅓ yd.
Fabric C	GTH-47506	FQ.

Block 3

Fabric A	GTH-37506	½ yd.
Fabric B	GTH-47503	⅓ yd.
Fabric C	PE-433	FQ.

Block 4

Fabric A	GTH-37503	½ yd.
Fabric B	GTH-47505	⅓ yd.
Fabric C	PE-472	FQ.

CUTTING DIRECTIONS

- Eight (8) 20" x 1½" strips from fabric **A**.
- Seven (7) 20" x ¾" strips from fabric **B**.
- Two (2) 10" x 1" strips from fabric **B**.
- Two (2) **template d** from fabric **A**.
- One (1) **template c** from fabric **B** and **C**.

CONSTRUCTION

Sew all rights sides together with ¼" seam allowance.

- Take one (1) 10½' x 2½' strip from fabric **A**, one (1) 10½' x 6½' rectangle from fabric **T**, and one (1) 10½' x 2½' strip from fabric **B**, and join them by the 10½' side.
- Take eight (8) 20" x 1½" strips from fabric **A** and seven (7) 20" x ¾" strips from fabric **B**.
- Join them **A>B>A>B>A>B>A>B>A>B>A>B>A**.
- Place template a in a 45 degree angle to one side and in a 45 degree angle on the other side and trim.

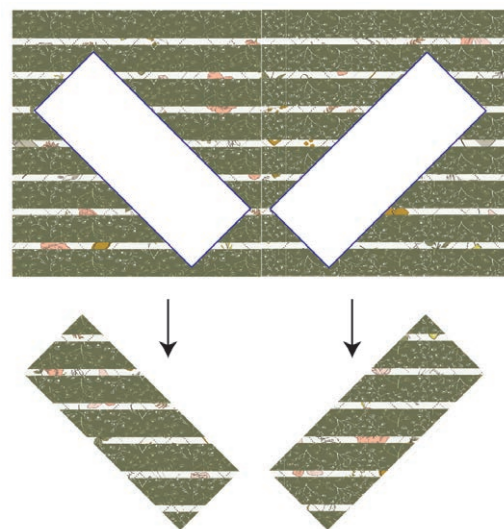


DIAGRAM 1

- Take the two (2) 10" x 1" strips from fabric **B**, and join them to the templates a as follows:



DIAGRAM 2

- Take **template b** and trim the block making sure the guide matches the vertical seam.
- For fabric placement and attachment follow Diagram 3.

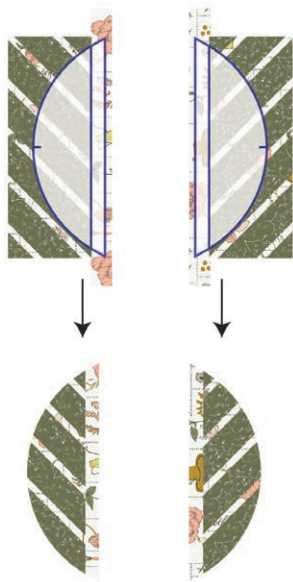


DIAGRAM 3

- Take **template c** from fabrics **B** and **C** and join them to **template b** as following Diagram 4..

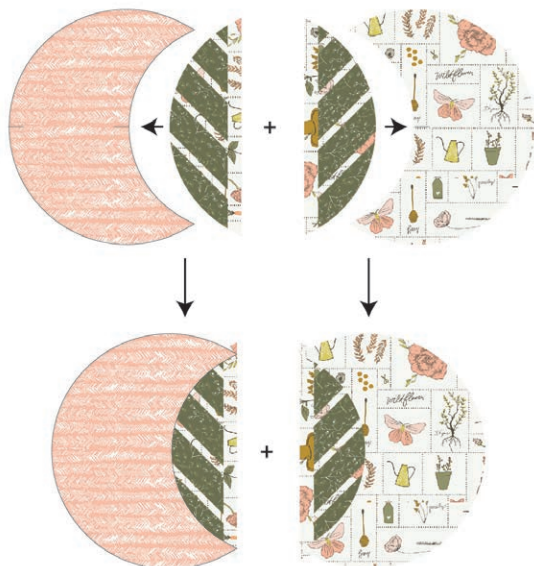


DIAGRAM 4

- Take **template d** from fabric **A** and join them following Diagram 5.

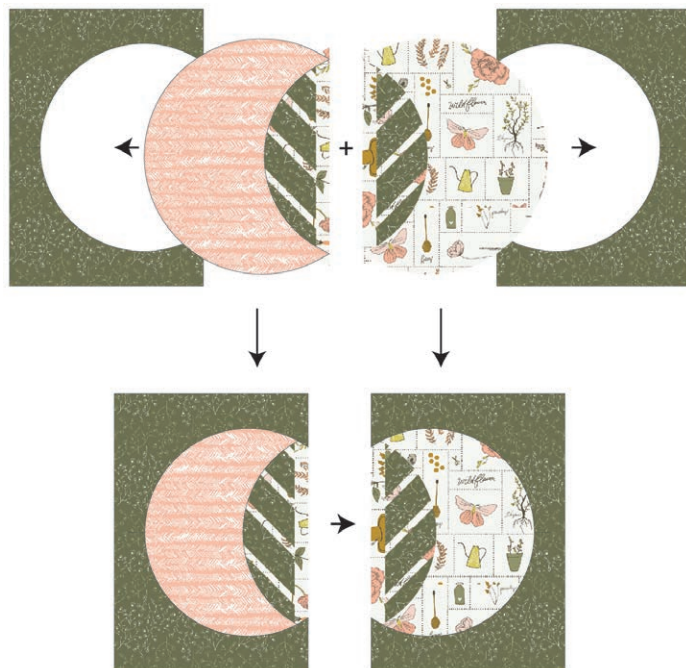


DIAGRAM 5

- Trim your block to 10" x 9½"

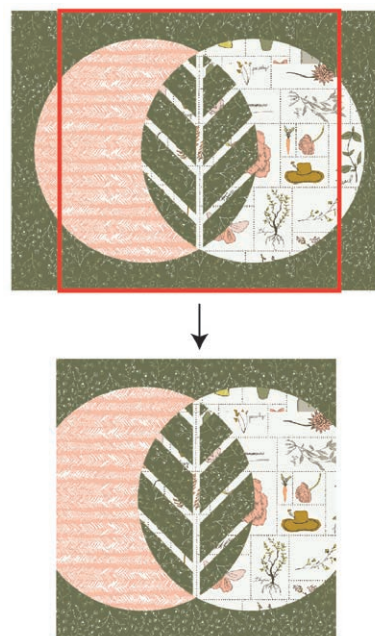


DIAGRAM 6

QUILT ASSEMBLY

Sew rights sides together

- Place BACKING FABRIC on a large surface wrong side up. Stretch it with masking tape against that surface.
- Place BATTING on top of backing fabric.
- Place TOP on top of the batting with right side facing up. Smooth away wrinkles using your hands.
- Pin all layers together and baste with basting thread, using long stitches. You can also use safety pins to join the layers.
- Machine or hand quilt starting at the center and working towards the corners. Remember that quilting motifs are a matter of personal preference. Have fun choosing yours!

XXXXXXXXXXXXXXXXXXXXXXXXXXXX

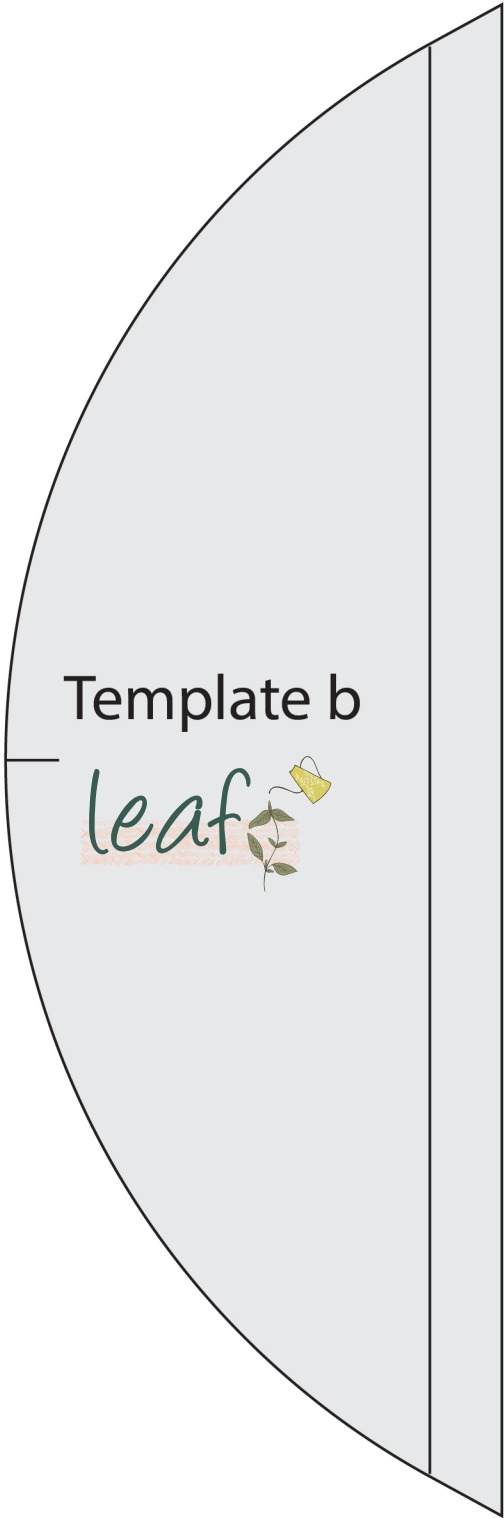
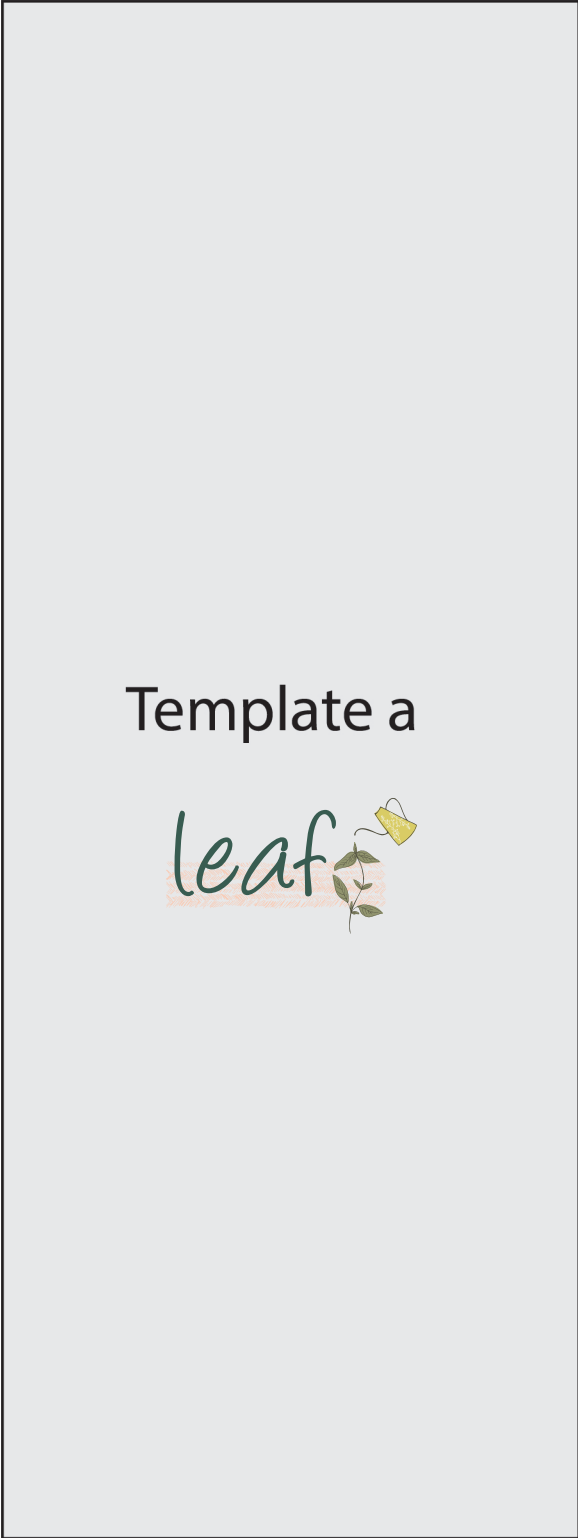
Congratulations
& enjoy

XXXXXXXXXXXXXXXXXXXXXXXXXXXX



artgalleryfabrics.com

NOTE: While all possible care has been taken to ensure the accuracy of this pattern, We are not responsible for printing errors or the way in which individual work varies. Please read instructions carefully before starting the construction of this quilt. If desired, wash and iron your fabrics before starting to cut.





leaf

