

GOLDEN JOINERY

DESIGNED BY AGF STUDIO

gathered

FABRICS DESIGNED BY BONNIE CHRISTINE

FOLK & FLORA



GTH-37500
FORAGED GARLAND PEONY



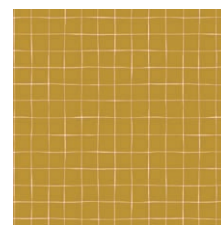
GTH-37509
SIMPLE LIVING



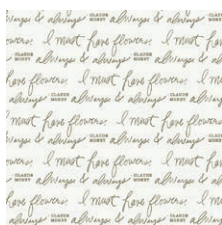
GTH-37507
FLORET ROOST PETAL



GTH-37504
COLLECTED STEMS BRIGHT



GTH-37506
AERIAL CLAY



GTH-37503
ALWAYS & ALWAYS THYME



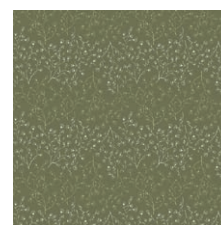
GTH-37501
BRISTLING DELICATE



GTH-37505
SWEET HARVEST OLIVE



GTH-37502
UNRULY TERRACE EARTH

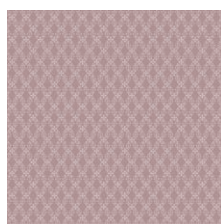


GTH-37508
VERDURE FIELD

PRESSED FLOWERS



GTH-47500
FORAGED GARLAND GOLDEN



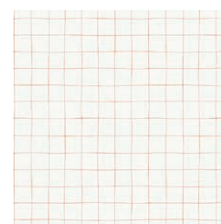
GTH-47510
CULTIVATED



GTH-47507
FLORET ROOST DELIGHT



GTH-47504
COLLECTED STEMS DUSTY



GTH-47506
AERIAL BLUSH



GTH-47503
ALWAYS & ALWAYS LUMINANCE



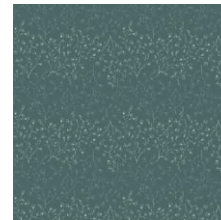
GTH-47501
BRISTLING BALMY



GTH-47505
SWEET HARVEST RARE



GTH-47502
UNRULY TERRACE SHADE



GTH-47508
VERDURE SPRUCE



FEEL THE DIFFERENCE © 2018 Courtesy of Art Gallery Quilts LLC. All Rights Reserved.



FINISHED SIZE | 18" x 35"

FABRIC REQUIREMENTS

Fabric A	GTH-47500	$\frac{1}{3}$ yd.
Fabric B	GTH-47508	$\frac{1}{6}$ yd.
Fabric C	GTH-37506	F8.
Fabric D	PE-433	$1\frac{1}{6}$ yd.

BACKING FABRIC

GTH-47500 $\frac{3}{4}$ yds. (*Suggested*)

BINDING FABRIC

PE-433 (Fabric **D**) (*Included*)

CUTTING DIRECTIONS

$\frac{1}{4}$ " seam allowances are included.
WOF means width of fabric.

- Pair $\frac{1}{3}$ yard from fabric **A** with $\frac{1}{3}$ yard from fabric **D**.
- Cut uneven strips no wider than 1" from each fabric and join them until you get a rectangle that measures 22" x 16".
- Pair $\frac{1}{6}$ yard from fabric **B** with $\frac{1}{6}$ yard from fabric **D**.
- Cut uneven strips no wider than 1" from each fabric and join them until you get a rectangle that measures 6" x 18".
- Subcut template **a**, **b**, and **d** from the 22" x 16" rectangle and template **c** from the 6" x 18" rectangle.

XXXXXXXXXXXXXXXXXXXXXXXXXXXXXXXXXXXX



DIAGRAM 1

CONSTRUCTION

Sew all rights sides together with $\frac{1}{4}$ " seam allowance.

- Take pieces from fabric **D** and sew them to the top and bottom edges of the templates.
- Make sure the pieces from fabric **D** are long enough so the final size of the templates is greater than the height than the finished wall art (18").
- Clean the sides of fabric **D** by continuing the side lines of the templates.
- Follow Diagram 2.



DIAGRAM 2

Joining Template a

- Take ½ yard from fabric **D** and template **a**.
- Place template **a** on top of fabric **D** towards the left side.
- Make sure the top and bottom edges of template **a** are longer than the height of fabric **D**.
- Following the side lines of template **a**, trim fabric **D**.
- Remove the piece from fabric **D** that you just trimmed and insert template **a**.
- For fabric placement and attachment follow Diagram 3.

Joining Template a

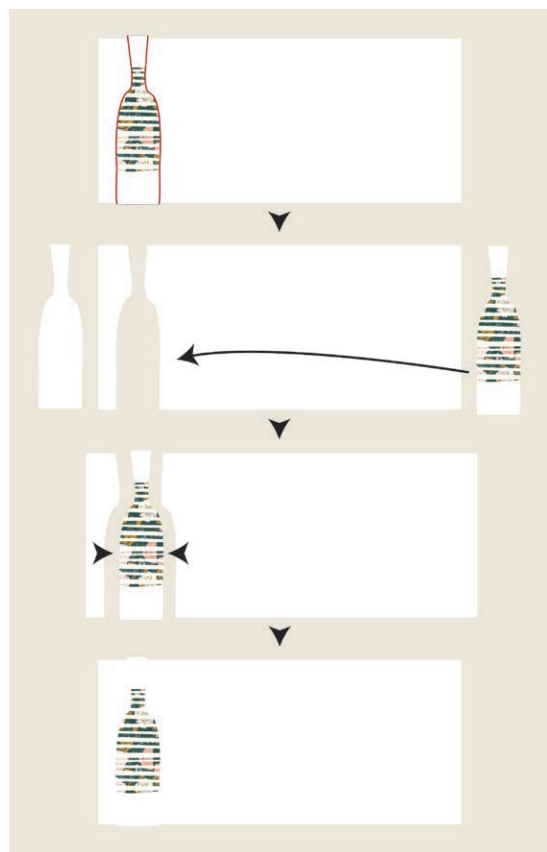


DIAGRAM 3

Joining Template b

- Take the wall art and template **b**.
- Place template **b** on top of the wall art next to template **a**.
- Make sure the top and bottom edges of template **b** are longer than the height of the wall art.
- Following the side lines of template **b**, trim the wall art.
- Remove the piece from fabric **D** that you just trimmed and insert template **b**.
- For fabric placement and attachment follow Diagram 4.

Joining Template b

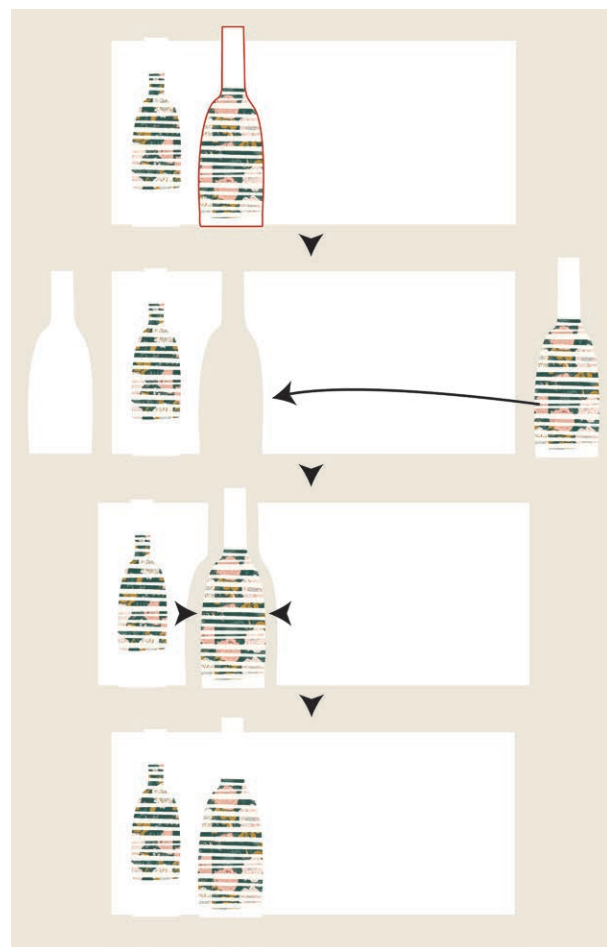


DIAGRAM 4

Joining Template **c**

- Take the wall art and template **c**.
- Place template **c** on top of the wall art next to template **b**.
- Make sure the top and bottom edges of template **c** are longer than the height of the wall art.
- Following the side lines of template **c**, trim the wall art.
- Remove the piece from fabric **D** that you just trimmed and insert template **c**.
- For fabric placement and attachment follow Diagram 5.

Joining Template **c**

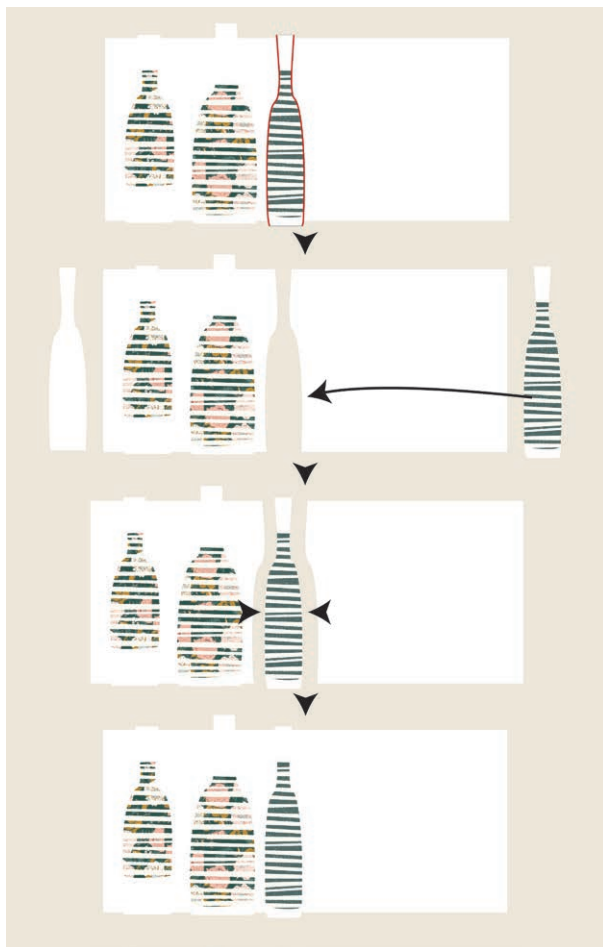


DIAGRAM 5

Joining Template **d**

- Take the wall art and template **d**.
- Place template **c** on top of the wall art next to template **c**.
- Make sure the top and bottom edges of template **d** are longer than the height of the wall art.
- Following the side lines of template **d**, trim the wall art.
- Remove the piece from fabric **D** that you just trimmed and insert template **d**.
- For fabric placement and attachment follow Diagram 6.

Joining Template **d**

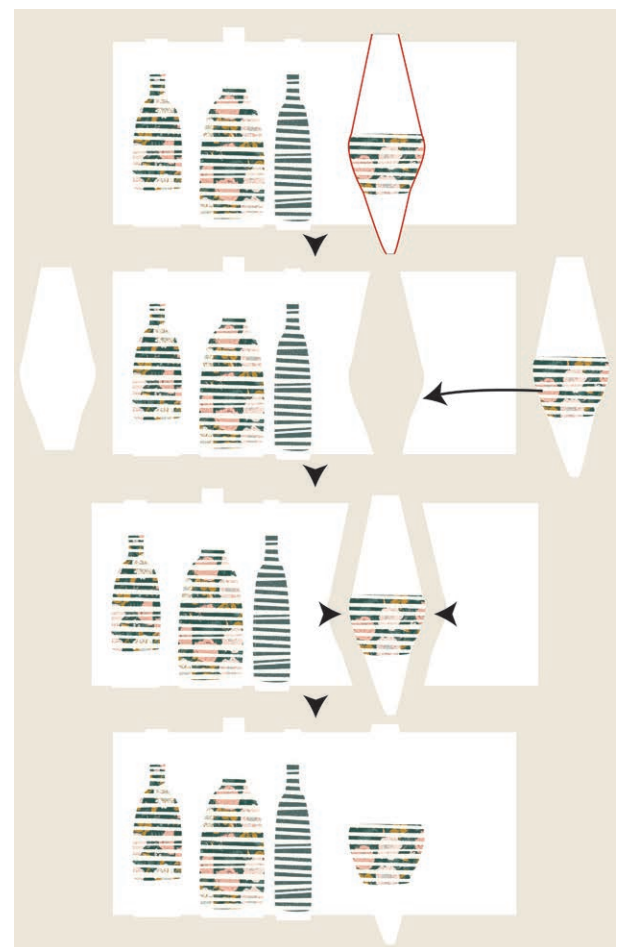


DIAGRAM 6

- Trim the wall art to 35" x 18".



DIAGRAM 6

- As a final touch, you can use the words setting of your machine to write a cute message in your wall art.
- I recommend doing it after quilting.

QUILT ASSEMBLY

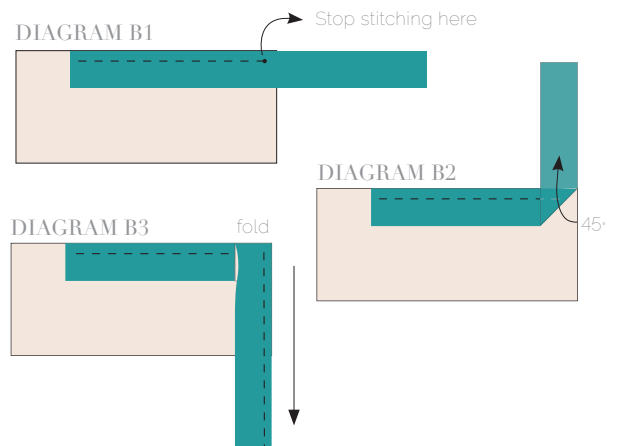
Sew rights sides together

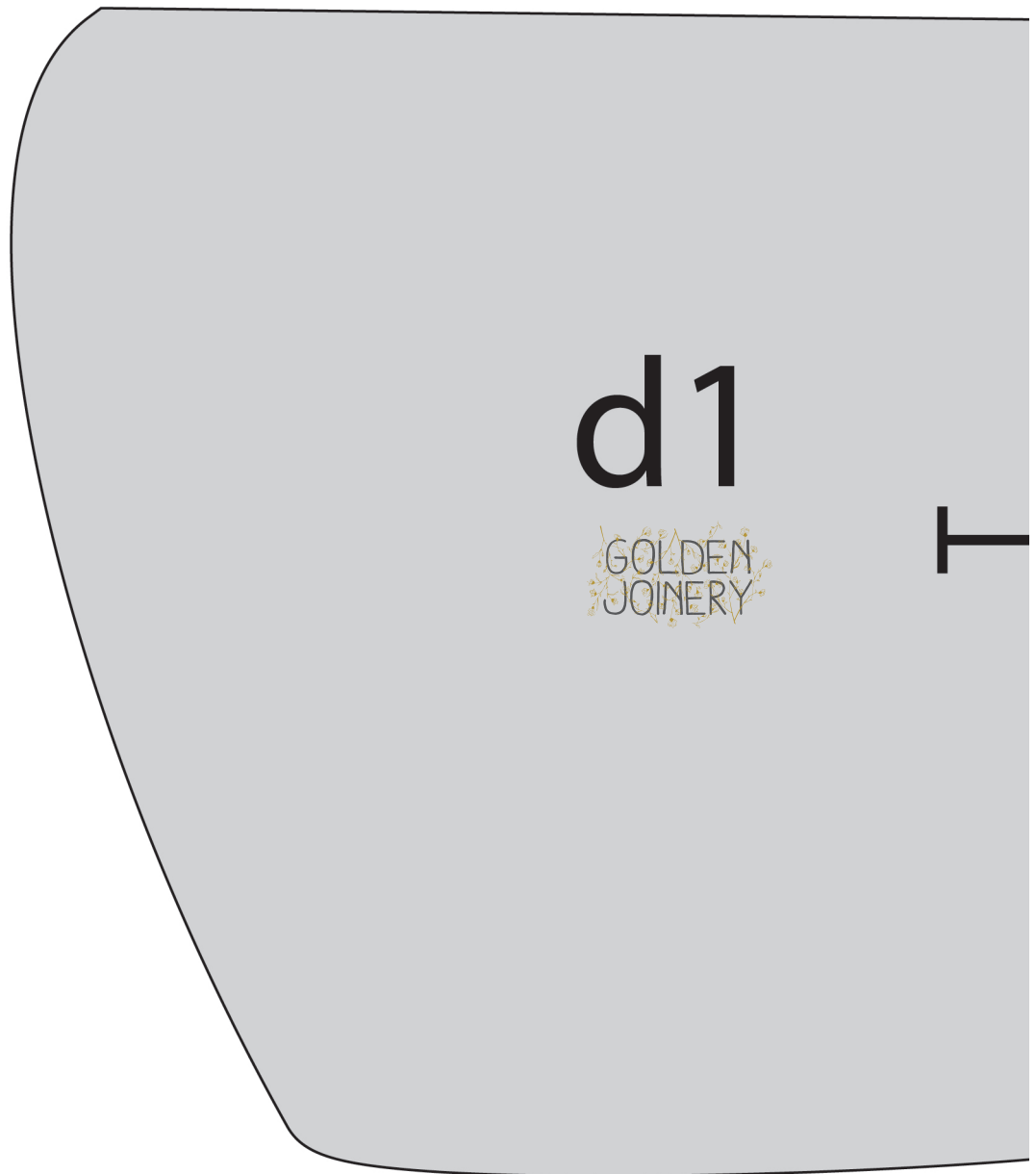
- Place BACKING FABRIC on a large surface wrong side up. Stretch it with masking tape against that surface.
- Place BATTING on top of backing fabric.
- Place TOP on top of the batting with right side facing up. Smooth away wrinkles using your hands.
- Pin all layers together and baste with basting thread, using long stitches. You can also use safety pins to join the layers.
- Machine or hand quilt starting at the center and working towards the corners. Remember that quilting motifs are a matter of personal preference. Have fun choosing yours!
- After you finished, trim excess of any fabric or batting, squaring the quilt to proceed to bind it.

BINDING

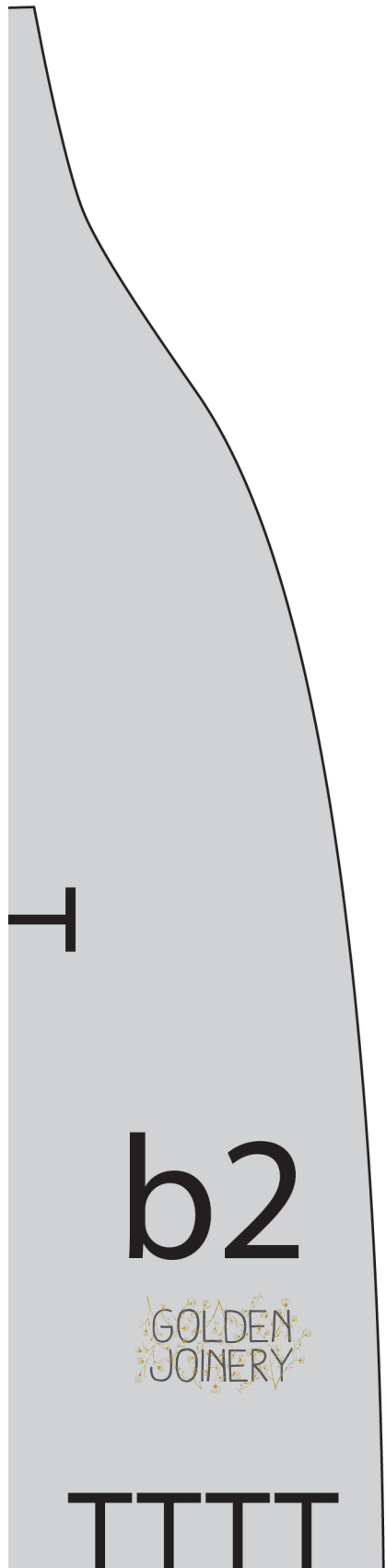
Sew rights sides together.

- Cut enough strips 1 ½" wide by the width of the fabric **S** to make a final strip 290" long. Start sewing the binding strip in the middle of one of the sides of the quilt, placing the strip right side down and leaving an approximated 5" tail. Sew with ¼" seam allowance (using straight stitch), aligning the strip's raw edge with the quilt top's raw edge.
- Stop stitching ¼" before the edge of the quilt (**DIAGRAM B 1**). Clip the threads. Remove the quilt from under the machine presser foot. Fold the strip in a motion of 45° and upward, pressing with your fingers (**DIAGRAM B2**). Hold this fold with your finger, bring the strip down in line with the next edge, making a horizontal fold that aligns with the top edge of the quilt (**DIAGRAM B3**). Start sewing at ¼" of the border, stitching all the layers. Do the same in the four corners of the quilt.
- Stop stitching before you reach the last 5 or 6 inches. Cut the threads and remove the quilt from under the machine presser foot. Lay the loose ends of the binding flat along the quilt edge, folding the ends back on themselves where they meet. Press them together to form a crease. Using this crease as the stitching line, sew the two open ends of the binding with right sides together (you can help yourself marking with a pencil if the crease is difficult to see).
- Trim seam to ¼" and press open. Complete the sewing. Turn binding to back of the quilt, turn raw edge inside and stitch by hand using blind stitch.









T

a2



11

b3

GOLDEN JOINERY





XXXXXXXXXXXXXXXXXXXXXXXXXXXXXXXXXXXX

Congratulations & enjoy

XXXXXXXXXXXXXXXXXXXXXXXXXXXXXXXXXXXX



artgalleryfabrics.com

NOTE: While all possible care has been taken to ensure the accuracy of this pattern, We are not responsible for printing errors or the way in which individual work varies. Please read instructions carefully before starting the construction of this quilt. If desired, wash and iron your fabrics before starting to cut.

© 2018 Courtesy of Art Gallery Quilts LLC. All Rights Reserved.