

XXXXXX

中国书画函授大学肇庆分校
 肇庆分校建校二十周年纪念册
 肇庆分校建校二十周年纪念册



XXXXXXXXXXXXXXXXXXXXXXXXXXXX



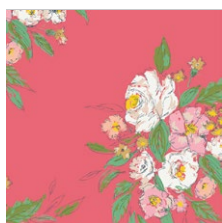
Glee Wall Art

QUILT DESIGNED BY

Signature

FABRICS DESIGNED BY SHARON HOLLAND

FOLIAR



SGN-68700
EXTEMPORE CELEBRATION



SGN-68701
FLORA AND FAUNA HIDDEN



SGN-68703
FRITILLARY SHADOW PLAY



SGN-68704
LACEY COSMOS



SGN-68705
TRAVELER PEBBLES



SGN-68708
UNTAMED BEAUTY DAYBREAK



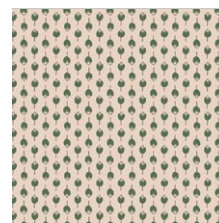
SGN-68711
VENTURE FORWARD



SGN-68713
SMALL WORLD SPRIGHTLY

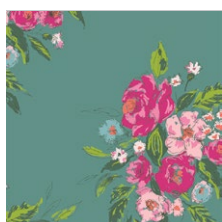


SGN-68710
LATERAL BUD PROFUSION



SGN-68707
TENDER ARRANGEMENT

ATMOSPHERIC



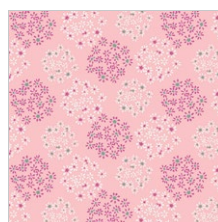
SGN-58700
EXTEMPORE FANCY



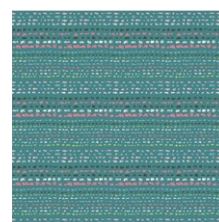
SGN-58701
FLORA AND FAUNA MILIEU



SGN-58702
SEED HEAD WINDSWEPT



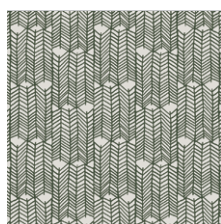
SGN-58704
LACEY STARDUST



SGN-58705
TRAVELER RAINDROPS



SGN-58708
UNTAMED BEAUTY TWILIGHT



SGN-58711
VENTURE CARAVAN



SGN-58712
A ROSE IS A ROSE FOREVER



SGN-58709
SPORANGIA PLAID DOTTED



SGN-58706
PATIO GARDEN GREEN THUMB



FEEL THE DIFFERENCE © 2018 Courtesy of Art Gallery Quilts LLC. All Rights Reserved.



FINISHED SIZE | 10' x 40'

FABRIC REQUIREMENTS

Fabric A	SGN-58711	½yds.
Fabric B	SGN-58701	¾ yd.
Fabric C	SGN-58705	¼ yd.
Fabric D	SGN-58709	¼ yd.
Fabric E	SGN-68700	¼ yd.
Fabric F	SGN-68711	¼ yd.
Fabric G	SGN-58704	¼ yd.
Fabric H	DEN-S-2003	⅞ yd.

BACKING FABRIC

SGN68707- 1 ¼ yds. *(Suggested)*

BINDING FABRIC

DEN-S-2003 (Fabric **H**) *(Included)*

CUTTING PREPERATIONS

Fabric **A**

- Four (4) 5 ⅞ X 5 ⅞ perfect squares.
- Two (2) 10 x 10½' perfect squares.

Fabric **B**

- Four (4) 5 ⅞ X 5 ⅞ perfect squares.
- Two (2) 10½ x 5½ rectangles.
- Two (2) pieces of template A.
- Two (2) template B.

Fabric **C**

- Two (2) 5⅞ x 5⅞ perfect squares.
- Two (2) 10½ x 5½ rectangles.

Fabric **D**

- Two (2) 5 ⅞ X 5 ⅞ perfect squares
- Two template A
- Two (2) templates D

Fabric **D**

- Two (2) 5 ⅞ X 5 ⅞ perfect squares
- Two template A
- Two (2) templates D

Fabric **E**

- One (1) 5 ⅞ X 5 ⅞ perfect squares
- Two (2) template A
- Two (2) template D

Fabric **F**

- One (1) 5 ⅞ X 5 ⅞ perfect squares
- One (1) template A
- One (1) template D

Fabric **G**

- Two (2) 5 ⅞ X 5 ⅞ perfect squares
- One (1) template A.
- One (1) template D
- Two (2) template B
- Two (2) template C

Fabric **H**

- Six (6) 5⅞ x 5⅞ perfect squares.
- Two (2) template A
- Two (2) template D
- Eight (8) template B
- Eight (8) template C.

CONSTRUCTION

Sew all rights sides together with ¼" seam allowance.

- These Wall art consist of three panels,in which two of them are exactly the same,they are the outside panels, will call them **panel X** and the center panel will be **panel Y**.

- Panel X will require HST.
- To make the HST (half square triangles)

Follow diagram 1



Place the two (5 7/8") squares right side together and mark a diagonal line on the wrong side of each square



Sew a 1/4" on each side of the marked diagonal line.



Using a rotary blade cut the square into two triangles. press open seam.

DIAGRAM 1

- You will end up with two (2) squares of (5.5 inches) each.

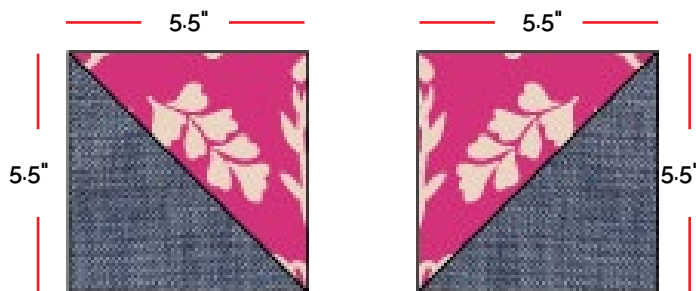


DIAGRAM 2

- For Row 3 of panel X, and all rows of panel Y we will be using a pattern attached at the end of the instructions, we made two (2) different set of templates, One (1) set for the left side (J and K) and one (1) set for the right side (L and M)

Note:

HST= (Half square triangle not included in the pattern set)

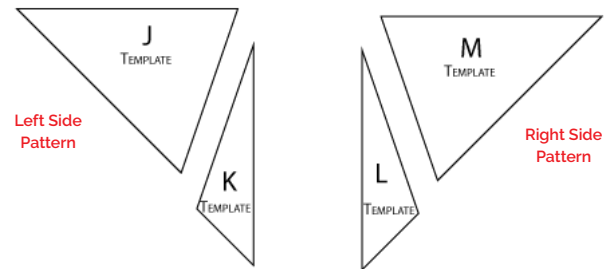


DIAGRAM 3

- Follow diagram below for construction of panel Y and Row 3 of panel X

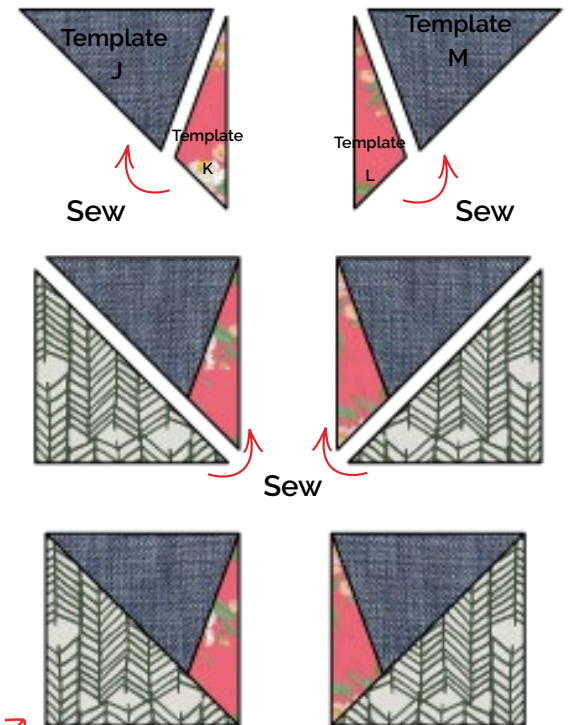


DIAGRAM 4

- Work by rows as show on diagram 5. Remember that panel X, has to be made twice.

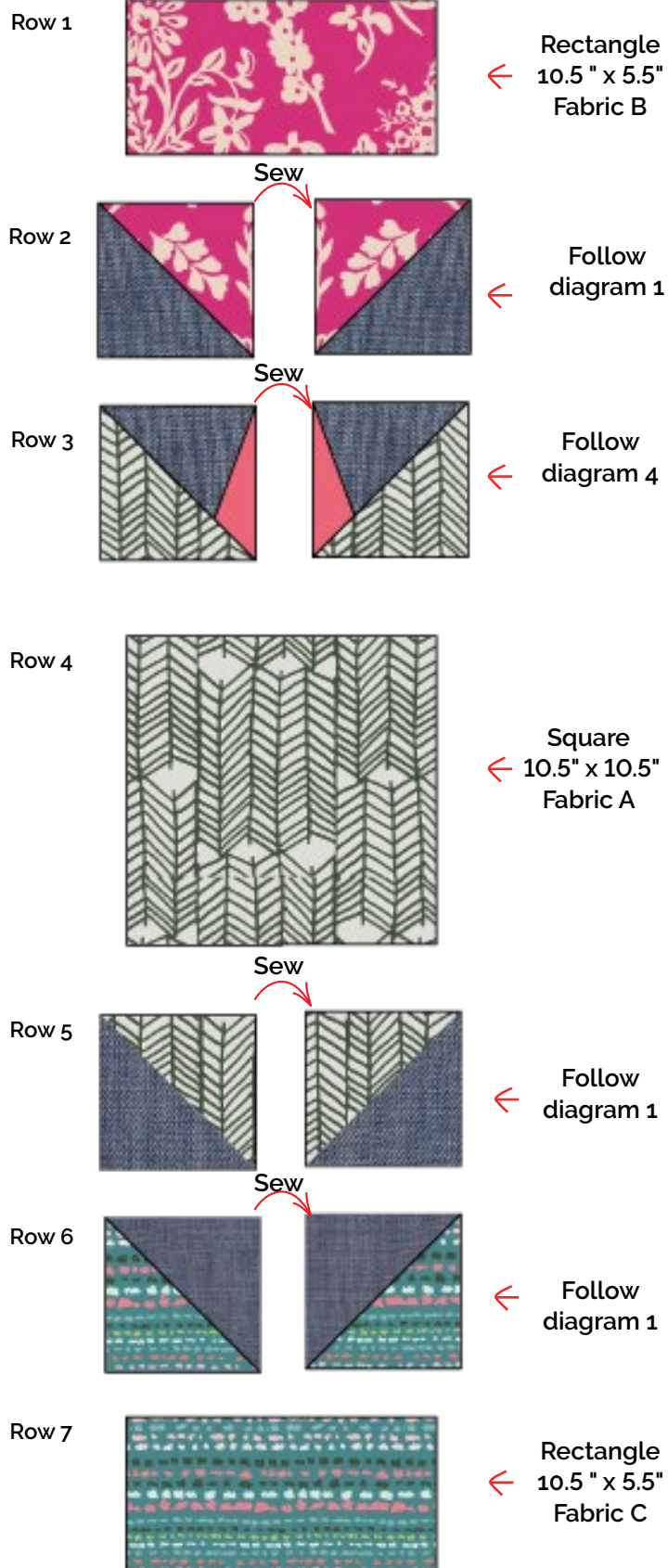


DIAGRAM 5

- Now sew the rows together.

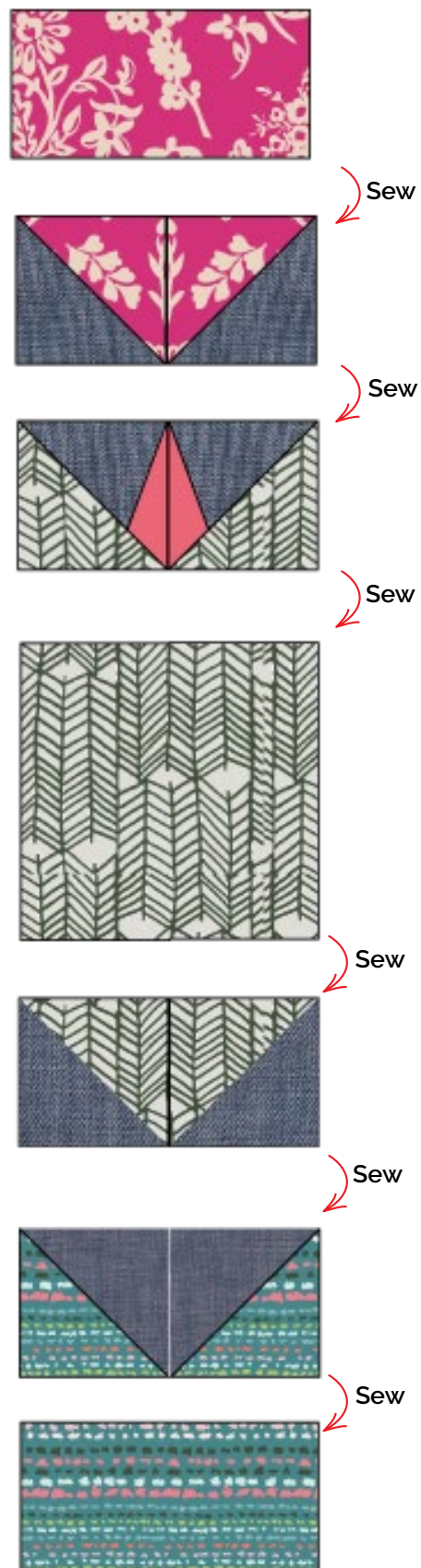


DIAGRAM 6

- Refer to Diagram 4 for panel Y blocks construction, Remember that Left Side of panel Y uses Templates J, K and right side of panel uses Templates L, M.

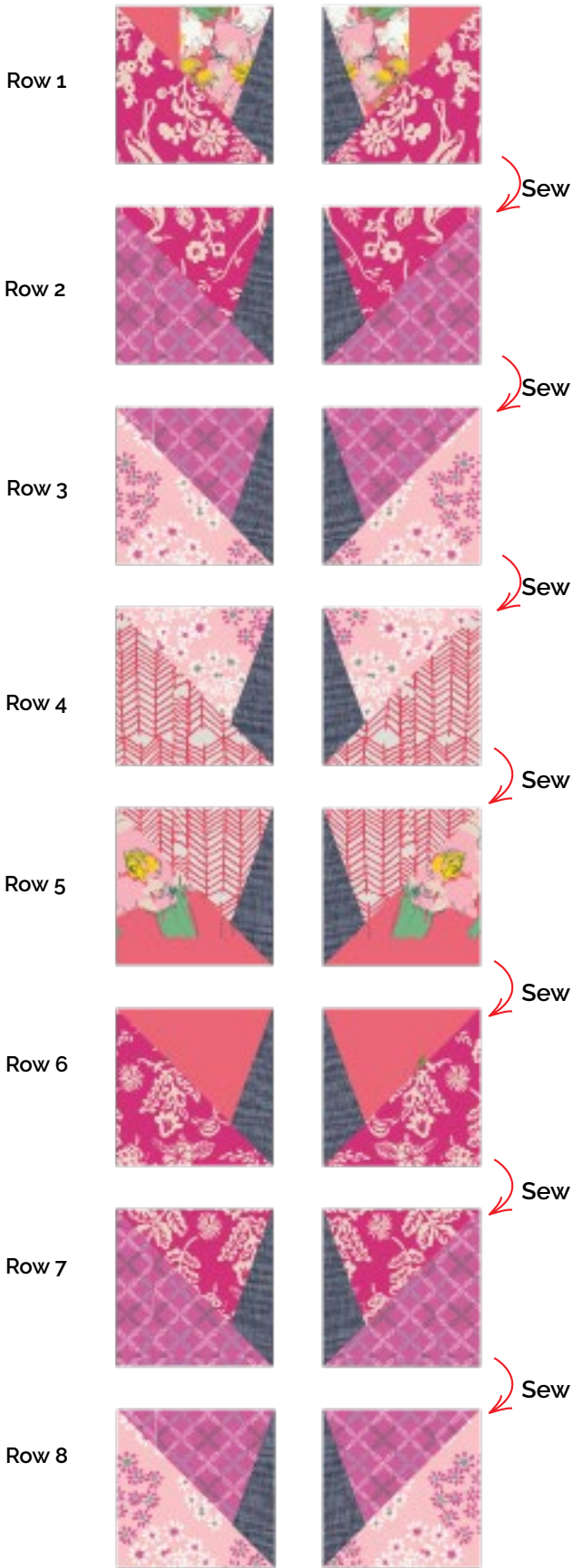


DIAGRAM 7

- Sew Column 1 and 2.

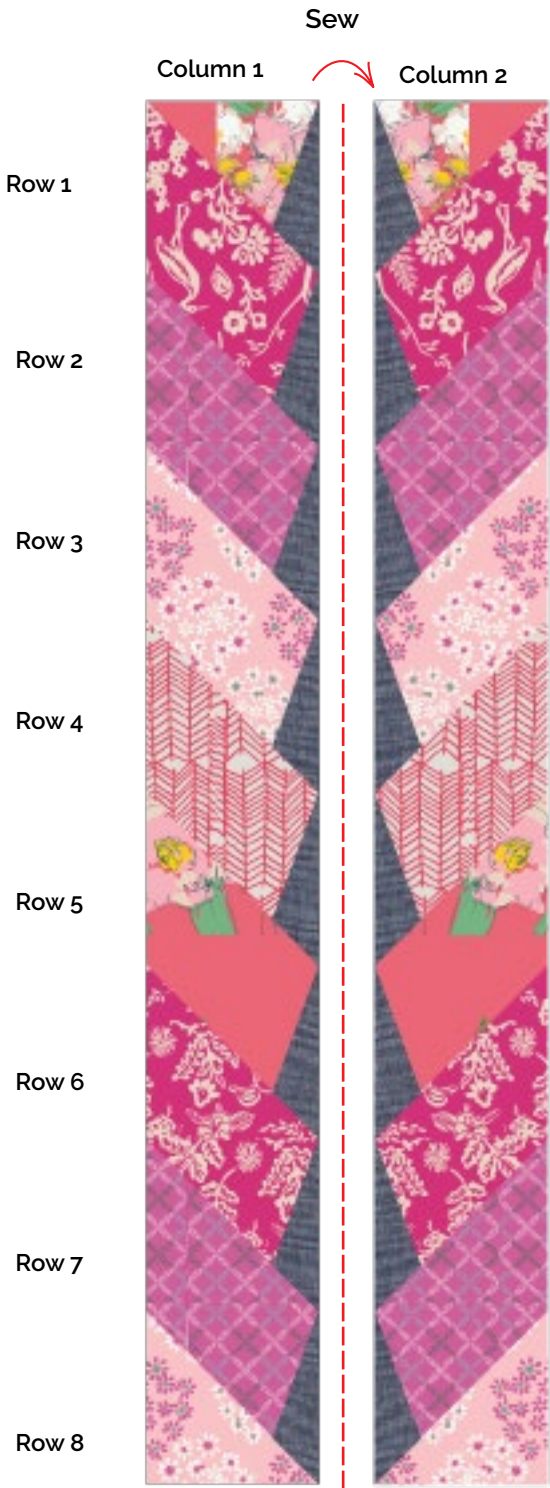


DIAGRAM 8

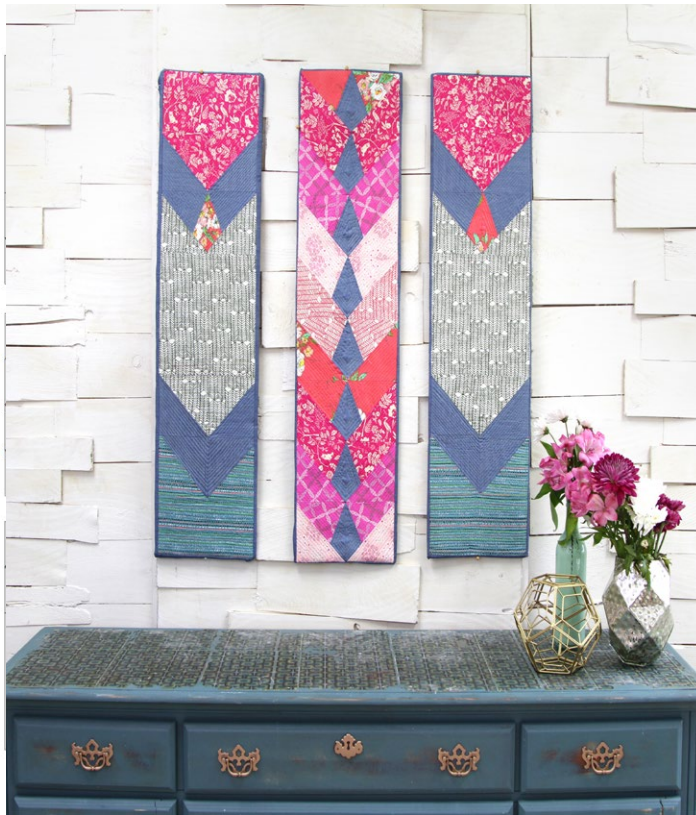


DIAGRAM 8

WALL PIECE ASSEMBLY

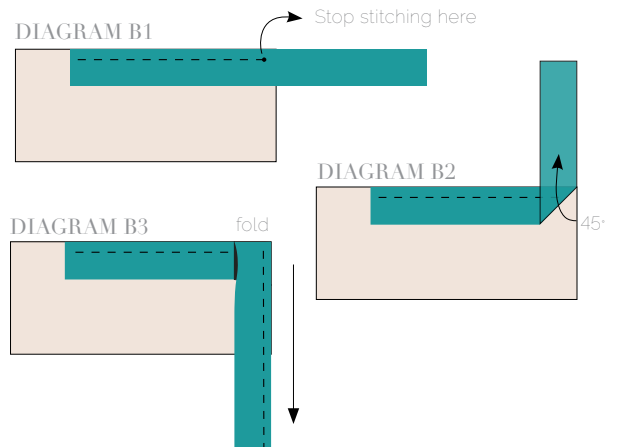
Sew rights sides together

- Place BACKING FABRIC on a large surface wrong side up. Stretch it with masking tape against that surface.
- Place BATTING on top of backing fabric.
- Place TOP on top of the batting with right side facing up. Smooth away wrinkles using your hands.
- Pin all layers together and baste with basting thread, using long stitches. You can also use safety pins to join the layers.
- Machine or hand quilt starting at the center and working towards the corners. Remember that quilting motifs are a matter of personal preference. Have fun choosing yours!
- After you finished, trim excess of any fabric or batting, squaring the quilt to proceed to bind it.

BINDING

Sew rights sides together.

- Cut enough strips 1 ½" wide by the width of the fabric **H** to make a final strip 330" long. Start sewing the binding strip in the middle of one of the sides of the quilt, placing the strip right side down and leaving an approximated 5" tail. Sew with ¼" seam allowance (using straight stitch), aligning the strip's raw edge with the quilt top's raw edge.
- Stop stitching ¼" before the edge of the quilt (**DIAGRAM B 1**). Clip the threads. Remove the quilt from under the machine presser foot. Fold the strip in a motion of 45° and upward, pressing with your fingers (**DIAGRAM B 2**). Hold this fold with your finger, bring the strip down in line with the next edge, making a horizontal fold that aligns with the top edge of the quilt (**DIAGRAM B 3**). Start sewing at ¼" of the border, stitching all the layers. Do the same in the four corners of the quilt.
- Stop stitching before you reach the last 5 or 6 inches. Cut the threads and remove the quilt from under the machine presser foot. Lay the loose ends of the binding flat along the quilt edge, folding the ends back on themselves where they meet. Press them together to form a crease. Using this crease as the stitching line, sew the two open ends of the binding with right sides together (you can help yourself marking with a pencil if the crease is difficult to see).
- Trim seam to ¼" and press open. Complete the sewing. Turn binding to back of the quilt, turn raw edge inside and stitch by hand using blind stitch.



XXXXXXXXXXXXXXXXXXXXXXXXXXXXXXXXXXXX

Congratulations
& enjoy

XXXXXXXXXXXXXXXXXXXXXXXXXXXXXXXXXXXX



artgalleryfabrics.com

NOTE: While all possible care has been taken to ensure the accuracy of this pattern, We are not responsible for printing errors or the way in which individual work varies.
Please read instructions carefully before starting the construction of this quilt. If desired, wash and iron your fabrics before starting to cut.

© 2018 Courtesy of Art Gallery Quilts LLC. All Rights Reserved.

Template

