

X
X
X
X
X
X
X
X
X
X
X
X
X
X
X
X

Enchanted Forest

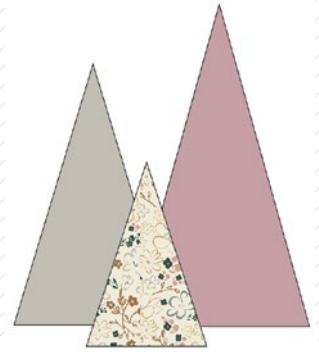


FUSIONS 
by AGF

FREE PATTERN

XXXXXXXXXXXXXXXXXXXXXXXXXXXXXX

Enchanted Forest



Sparkler FUSION

FABRICS DESIGNED BY *AGFstudio*



FUS-SK-1303
EVERLASTING BLOOMS SPARKLER



FUS-SK-1304
FROM WITHIN SPARKLER



FUS-SK-1308
STARBRIGHT SPARKLER



FUS-SK-1306
TROUVILLE ROUTES SPARKLER



FUS-SK-1305
PINETREE SPARKLER



FUS-SK-1300
SPRINKLED PEONIES SPARKLER



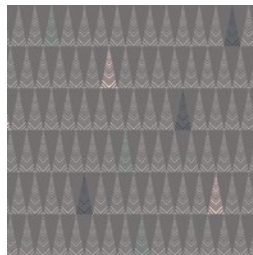
FUS-SK-1301
LITEN DITSY SPARKLER



FUS-SK-1307
CHADS SPARKLER



FUS-SK-1309
DOILAND GLOSS SPARKLER



FUS-SK-1302
TREE FARM SPARKLER



Enchanted Forest

FINISHED SIZE | 4" x 6", 5 1/4" x 8 1/2", 6" x 10 1/2"

FABRIC REQUIREMENTS

Fabric A	FUS-SK-1301	F8
Fabric B	PE-431	F8
Fabric C	PE-425	F8

CUTTING DIRECTIONS

1/4" seam allowances are included.

- Two (2) Template 1 from Fabric A
- One (1) Circle Template 1 from Fabric A
- Two (2) Template 2 from Fabric B
- One (1) Circle Template 2 from Fabric B
- Two (2) Template 3 from Fabric C
- One (1) Circle Template 3 from Fabric C

CONSTRUCTION

Sew all rights sides together with 1/4" seam allowance.

- Take your Template pieces and quilt as desired before assembling them together.
- Pair Template 1 pieces from Fabric A right sides facing
- Take your Circle template 1 and pin all around
- Sew around leaving a part unsewn

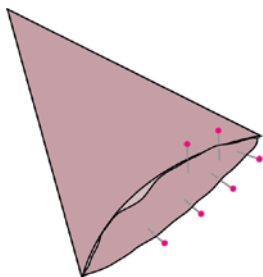
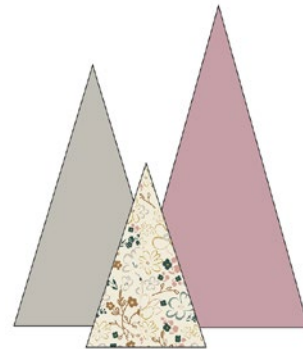


DIAGRAM 1

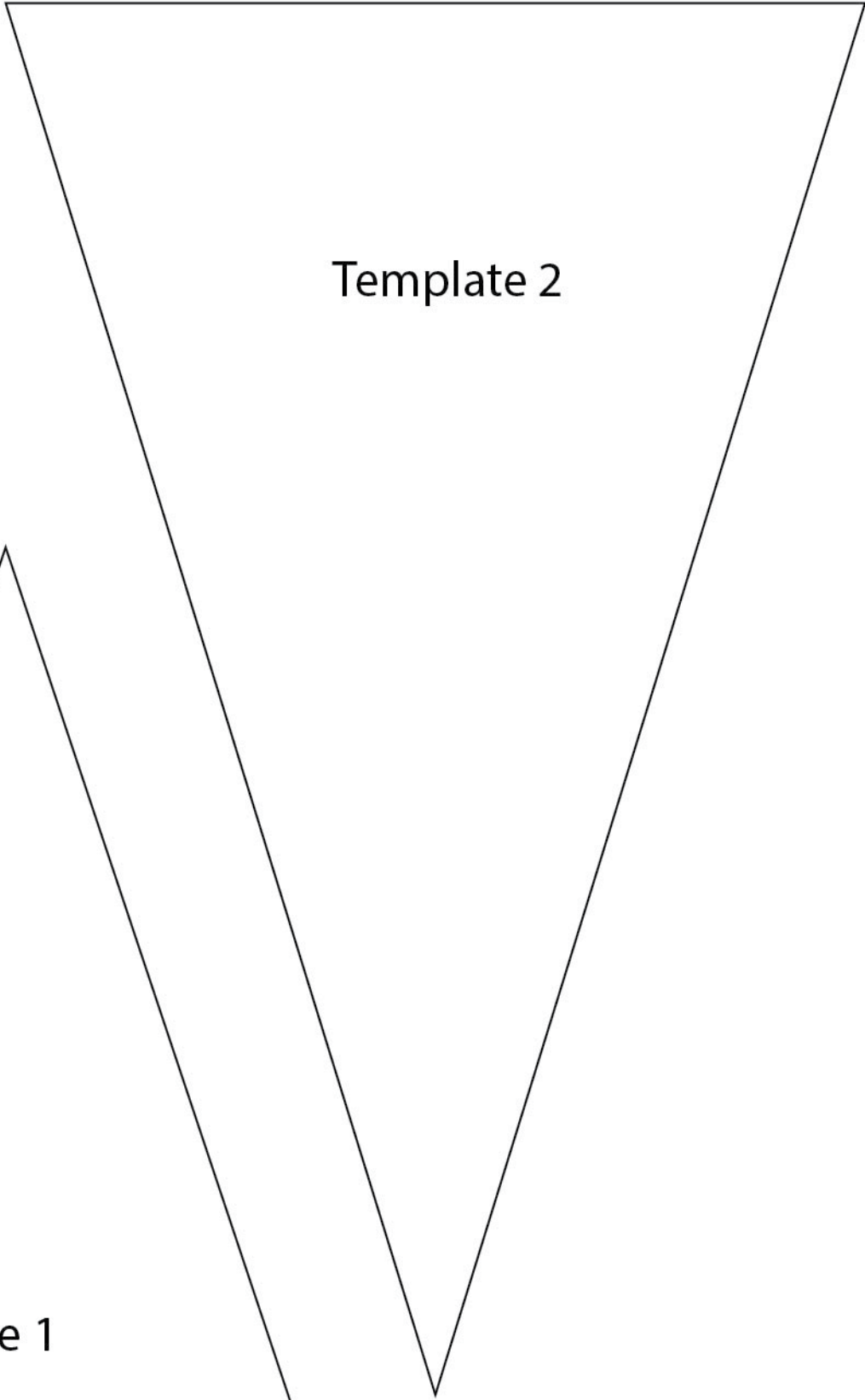
- Flip piece inside out
- Fill piece and close your opening
- Repeat the same process for your other center pieces.



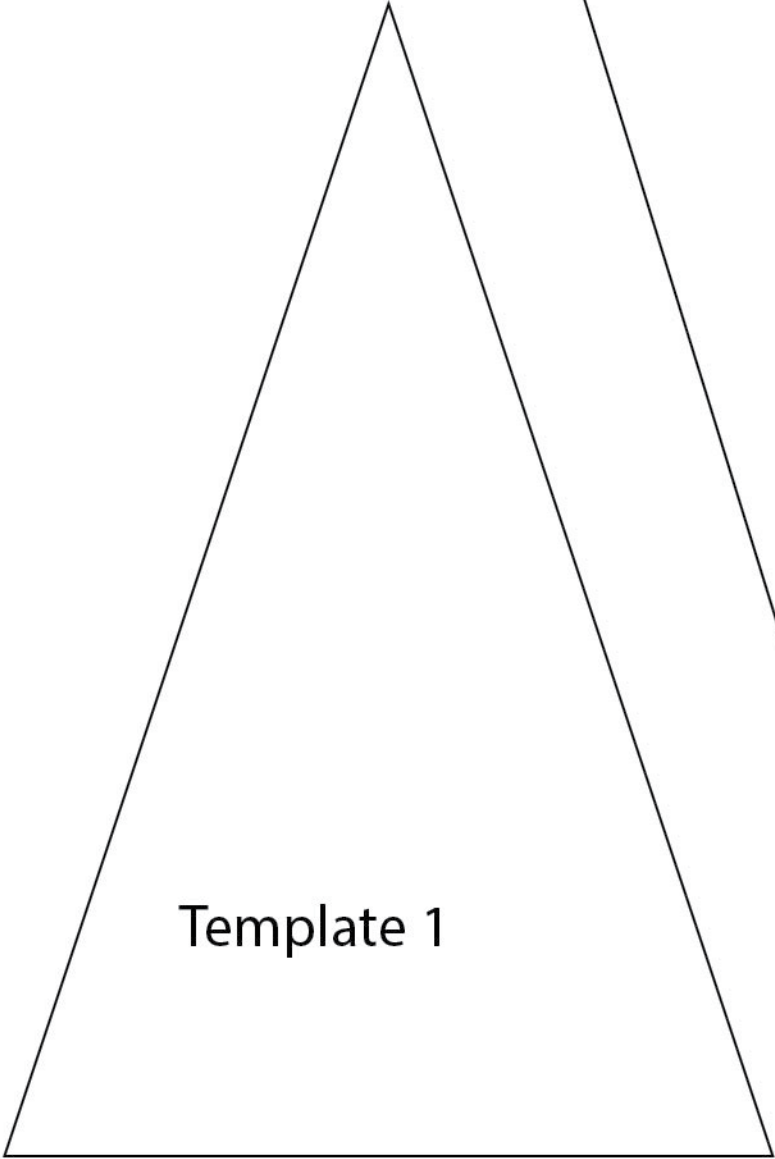
artgalleryfabrics.com

NOTE: While all possible care has been taken to ensure the accuracy of this pattern, We are not responsible for printing errors or the way in which individual work varies. Please read instructions carefully before starting the construction of this quilt. If desired, wash and iron your fabrics before starting to cut.

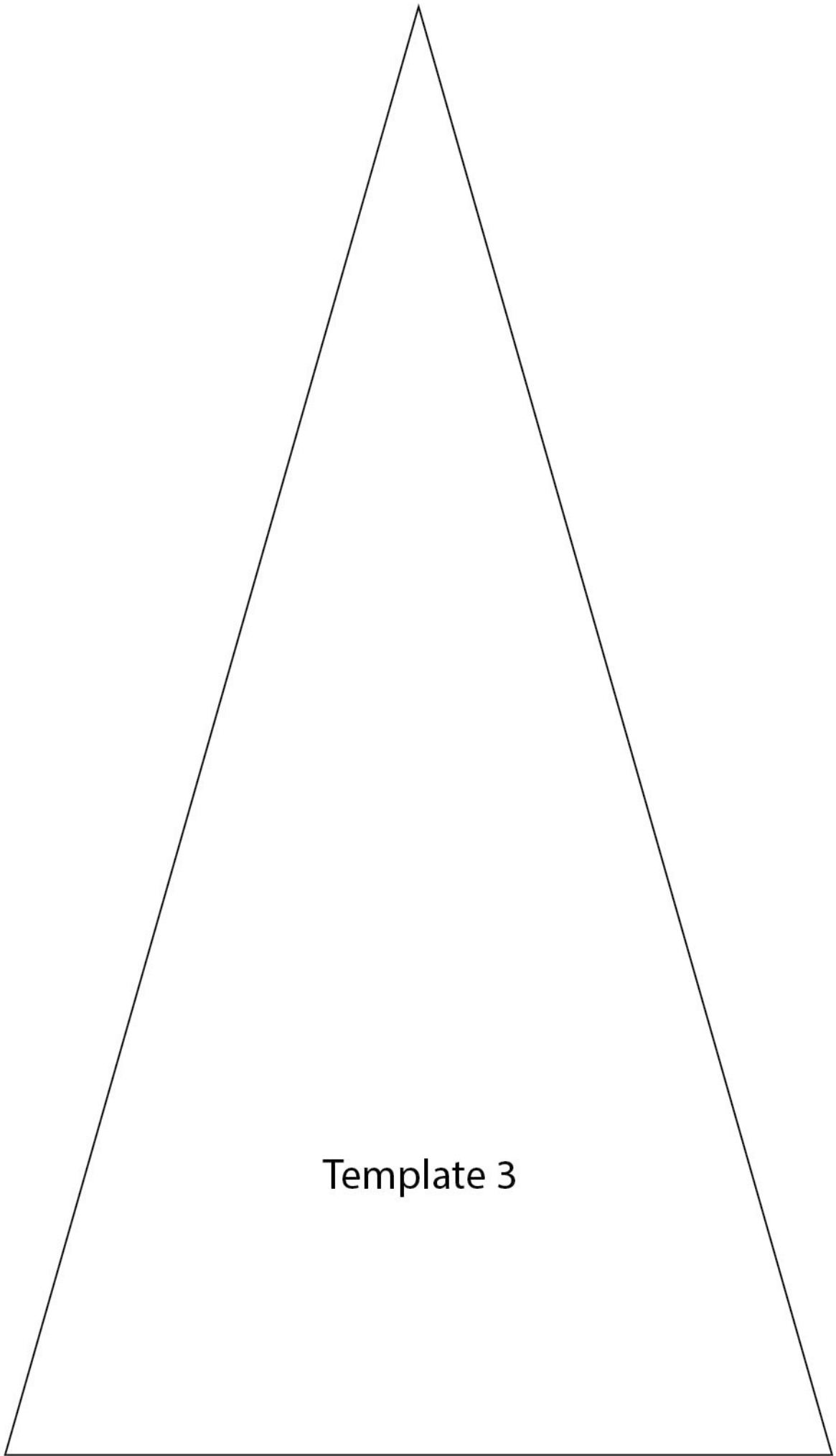
© 2018 Courtesy of Art Gallery Quilts LLC. All Rights Reserved.



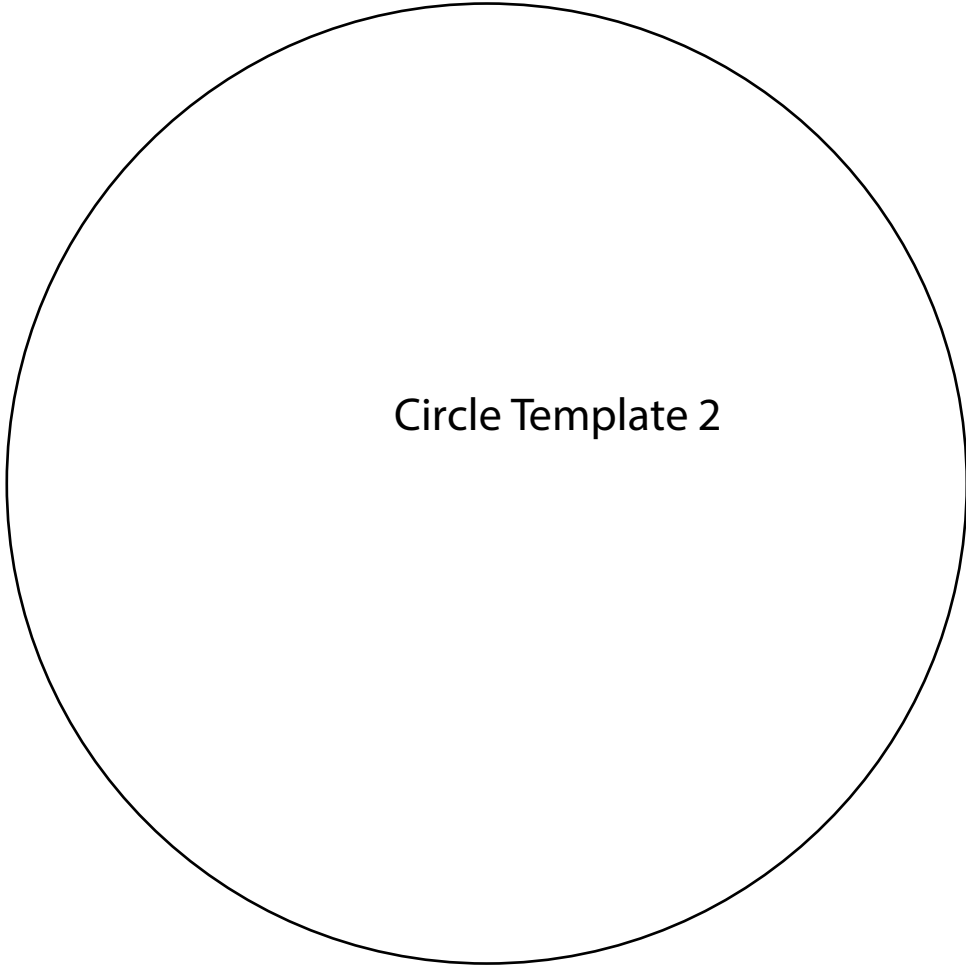
Template 2



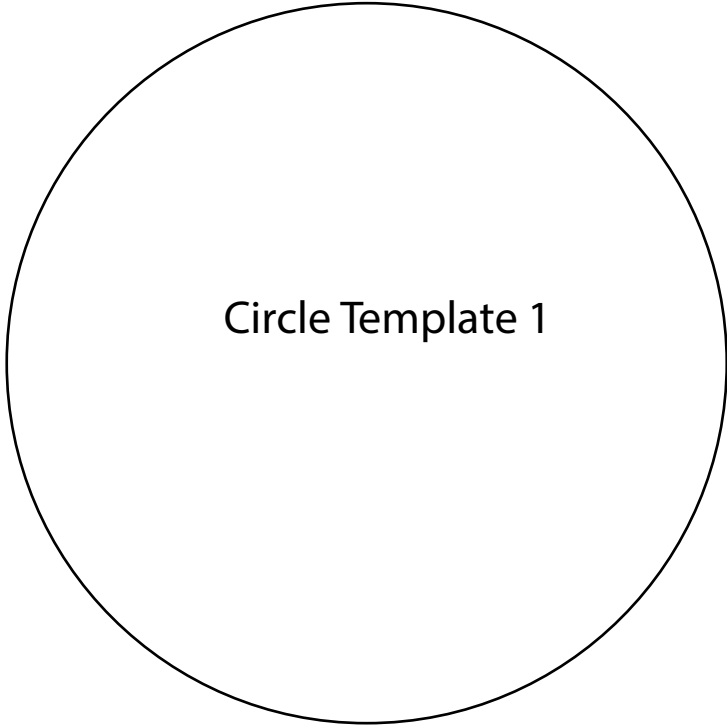
Template 1



Template 3

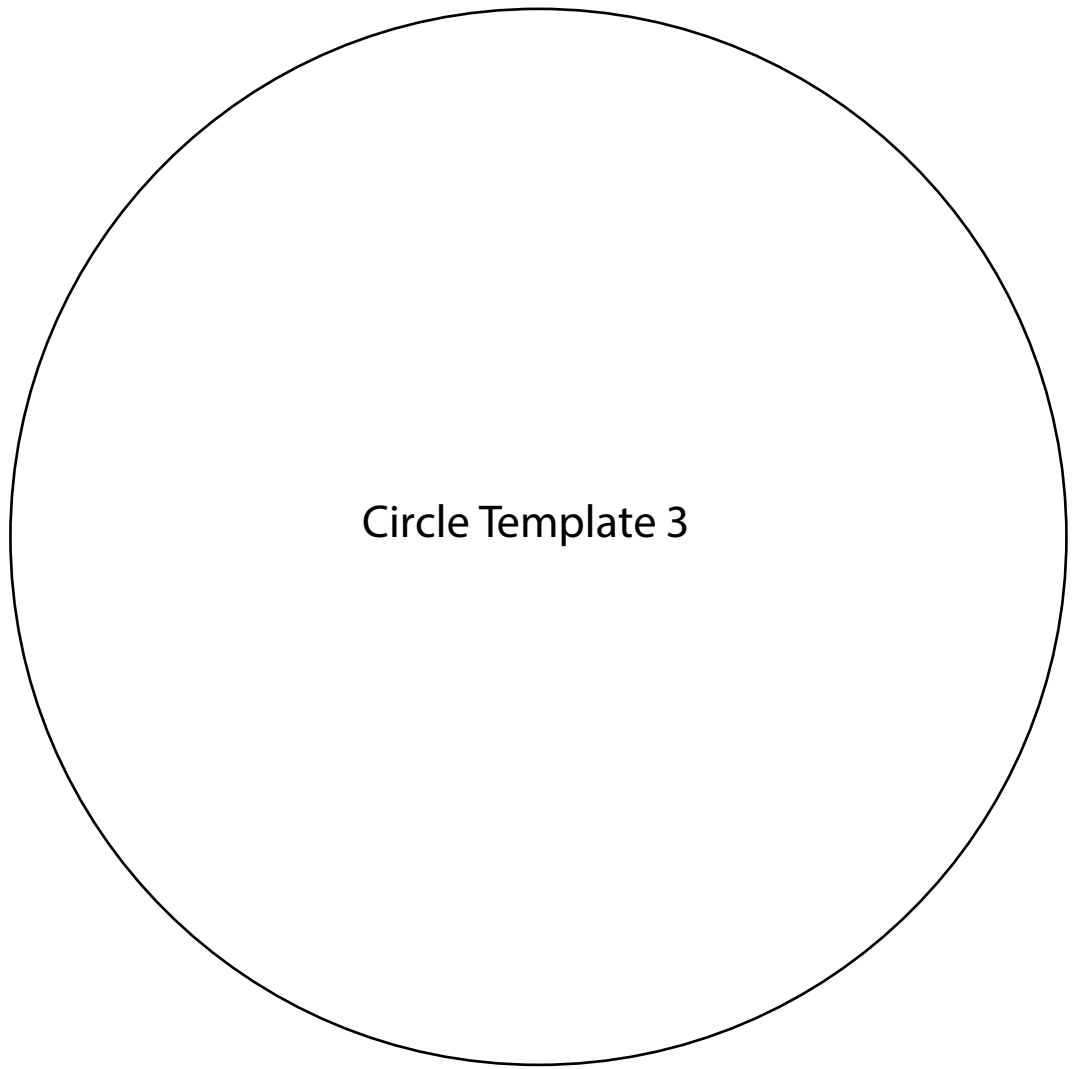


Circle Template 2



Circle Template 1





Circle Template 3