

Bon•Bini Sunset



ANGLES

FREE PATTERN

XXXXXXXXXXXXXXXXXXXXXXXXXXXX

A DIVISION OF AGF

Bon•Bini Sunset



FABRICS DESIGNED BY JESSICA SWIFT

VIOLETTE



SRN-6350
SIREN SONG ORCHID



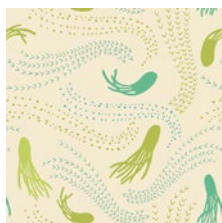
SRN-6352
WAVELENGTH REEF



SRN-6357
JUNGLE HEATWAVE



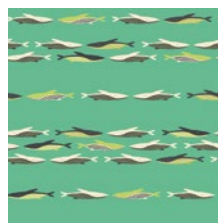
SRN-6355
KELP STORM AND MIST



SRN-6353
CALAMAR CITRON



SRN-6354
OCEAN FLORET STORM



SRN-6351
OCEANIA MORNING



SRN-6356
ANANAS SORBET

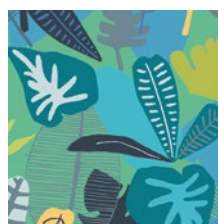
AQUARIUM



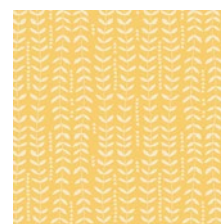
SRN-5350
SIREN SONG TWILIGHT



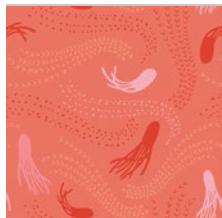
SRN-5352
WAVELENGTH SAND



SRN-5357
JUNGLE TROPICALE



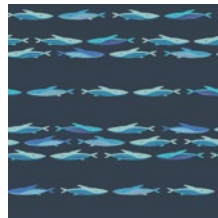
SRN-5355
KELP SUNSHINE



SRN-5353
CALAMAR CORAL



SRN-5354
OCEAN FLORET BREEZE



SRN-5351
OCEANIA NIGHTLIGHT



SRN-5356
ANANAS AQUA



FEEL THE DIFFERENCE © 2018 Courtesy of Art Gallery Quilts LLC. All Rights Reserved.

FINISHED SIZE | 88' x 92'

FABRIC REQUIREMENTS

Fabric A	SRN -5355	¾ yd.
Fabric B	PE-459	⅝ yd.
Fabric C	DEN-S-2006	¼ yd.
Fabric D	DEN-S-2007	½ yd.
Fabric E	PE-435	⅓ yd.
Fabric F	PE-449	1 yd.
Fabric G	PE-457	⅝ yd.
Fabric H	PE-406	⅓ yd.
Fabric I	FE-525	½ yd.
Fabric J	PRE-804	F8.
Fabric K	PE-438	⅝ yd.
Fabric L	SRN -5353	⅝ yd.
Fabric M	PE-426	½ yd.
Fabric N	SRN -6357	¾ yd.
Fabric O	PE-411	F8.
Fabric P	FE-515	½ yd.
Fabric Q	SRN-6356	½ yd.
Fabric R	SRN-6352	½ yd.
Fabric S	PE-439	⅓ yd.
Fabric T	PE-475	½ yd.
Fabric U	PE-474	F8.
Fabric V	FE-517	FQ.
Fabric W	SRN-6350	½ yd.
Fabric X	PE-425	⅓ yd.
Fabric Y	PE-476	½ yd.
Fabric Z	SRN-6354	FQ.
Fabric A1	PE-454	⅝ yd.
Fabric B1	DEN-S-2004	F8.
Fabric C1	SRN - 5350	⅝ yd.
Fabric D1	DEN-S-2001	½ yd.
Fabric E1	PE-442	⅓ yd.
Fabric F1	SRN-5351	⅓ yd.
Fabric G1	FE-510	FQ.
Fabric H1	PE-415	F8.
Fabric i1	FE-511	½ yd.
Fabric J1	PE-434	FQ.
Fabric K1	SRN-5357	½ yd.
Fabric L1	PE-464	⅓ yd.
Fabric M1	SRN-6351	½ yd.
Fabric N1	SRN-5356	⅓ yd.
Fabric O1	PE-403	⅓ yd.
Fabric P1	PE-402	½ yd.
Fabric Q1	SRN-6353	½ yd.
Fabric R1	FE-519	FQ.
Fabric S1	FE-508	FQ.
Fabric T1	DEN-L-4000	1 yd.
Fabric U1	PE-412	⅓ yd.

Fabric V1	PE-418	⅓ yd.
Fabric W1	FE-521	FQ.
Fabric X1	PE-419	⅓ yd.
Fabric Y1	SRN-5352	⅝ yd.
Fabric Z1	SRN-5354	⅝ yd.

BACKING FABRIC

SRN-6357 6 yds (Fabric **N**). (*Suggested*)

BINDING FABRIC

SRN- 5352 (Fabric **Y1**) (*Included*)

CUTTING DIRECTIONS

¼" seam allowances are included.

WOF means width of fabric.

- Eight (8) 8 1/2" x 4 1/2" rectangle from Fabric **A**
- Ten (10) 8 1/2" x 4 1/2" rectangle from Fabric **B, A1, D1**
- Six (6) 8 1/2" x 4 1/2" rectangle from Fabrics **G, P, Q, W, C1, K1, M1**
- One (1) 8 1/2" x 4 1/2" rectangle from Fabric **C, U, W1**
- Three (3) 8 1/2" x 4 1/2" rectangle from Fabrics **E, T, V, X, B1, B1, i1, L1, O1, P1, X1, Y1**
- Thirteen (13) 8 1/2" x 4 1/2" rectangle from Fabrics **F, N**
- Two (2) 8 1/2" x 4 1/2" rectangle from Fabrics **H, J, O, Z, S1, U1**
- Four (4) 8 1/2" x 4 1/2" rectangle from Fabrics **I, L, M, R, Y, S1, N1, Q1, V1**
- Eleven (11) 8 1/2" x 4 1/2" rectangle from Fabric **K**
- Five (5) 8 1/2" x 4 1/2" rectangle from Fabrics **D, S, R1**
- Seven (7) 8 1/2" x 4 1/2" rectangle from Fabric **F1, Z1**
- Twenty (20) 8 1/2" x 4 1/2" rectangle from Fabric **T1**
- Twenty (20) 4 1/2" x 4 1/2" squares from Fabrics **A, T1**
- Fifteen (15) 4 1/2" x 4 1/2" squares from Fabrics **B, D, i1**
- Four (4) 4 1/2" x 4 1/2" squares from Fabric **C, U, J1**

- Refer to the last two pages for your Quilt Assembly

QUILT ASSEMBLY

Sew rights sides together.

- Place BACKING FABRIC on a large surface wrong side up. Stretch it with masking tape against that surface.
- Place BATTING on top of backing fabric.
- Place TOP on top of the batting with right side facing up. Smooth away wrinkles using your hands.
- Pin all layers together and baste with basting thread, using long stitches. You can also use safety pins to join the layers.
- Machine or hand quilt starting at the center and working towards the corners. Remember that quilting motifs are a matter of personal preference. Have fun choosing yours!
- After you finished, trim excess of any fabric or batting, squaring the quilt to proceed to bind it.

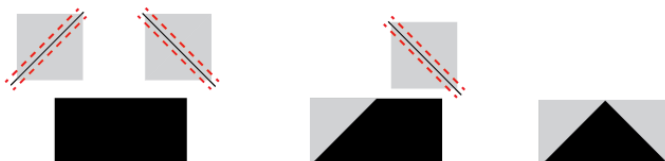
BINDING

Sew rights sides together.

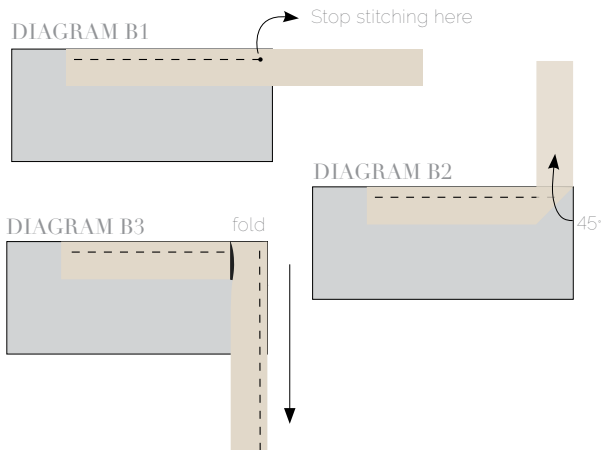
- Cut strips $1\frac{1}{2}$ " wide by the width of the fabric **Y1** to make a final strip 370" long. Start sewing the binding strip in the middle of one of the sides of the quilt, placing the strip right side down and leaving an approximated 5" tail. Sew with $\frac{1}{4}$ " seam allowance (using straight stitch), aligning the strip's raw edge with the quilt top's raw edge.
- Stop stitching $\frac{1}{4}$ " before the edge of the quilt (**DIAGRAM B 1**). Clip the threads. Remove the quilt from under the machine presser foot. Fold the strip in a motion of 45° and upward, pressing with your fingers (**DIAGRAM B2**). Hold this fold with your finger, bring the strip down in line with the next edge, making a horizontal fold that aligns with the top edge of the quilt (**DIAGRAM B3**). Start sewing at $\frac{1}{4}$ " of the border, stitching all the layers. Do the same in the four corners of the quilt.

CONSTRUCTION

- Follow the Flying Geese instructions in order to assemble each fabric piece.



- Stop stitching before you reach the last 5 or 6 inches. Cut the threads and remove the quilt from under the machine presser foot. Lay the loose ends of the binding flat along the quilt edge, folding the ends back on themselves where they meet. Press them together to form a crease. Using this crease as the stitching line, sew the two open ends of the binding with right sides together (you can help yourself marking with a pencil if the crease is difficult to see).
- Trim seam to $\frac{1}{4}$ " and press open. Complete the sewing. Turn binding to back of the quilt, turn raw edge inside and stitch by hand using blind stitch.



artgalleryfabrics.com

NOTE: While all possible care has been taken to ensure the accuracy of this pattern, We are not responsible for printing errors or the way in which individual work varies. Please read instructions carefully before starting the construction of this quilt. If desired, wash and iron your fabrics before starting to cut.

BonBini Sunset

