





# Ananas



FABRICS DESIGNED BY JESSICA SWIFT

VIOLETTE



**SRN-6350**  
SIREN SONG ORCHID



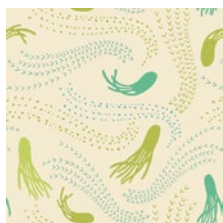
**SRN-6352**  
WAVELENGTH REEF



**SRN-6357**  
JUNGLE HEATWAVE



**SRN-6355**  
KELP STORM AND MIST



**SRN-6353**  
CALAMAR CITRON



**SRN-6354**  
OCEAN FLORET STORM



**SRN-6351**  
OCEANIA MORNING



**SRN-6356**  
ANANAS SORBET

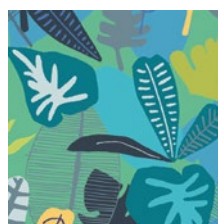
AQUARIUM



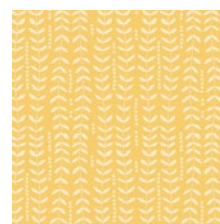
**SRN-5350**  
SIREN SONG TWILIGHT



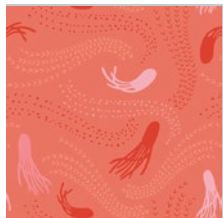
**SRN-5352**  
WAVELENGTH SAND



**SRN-5357**  
JUNGLE TROPICALE



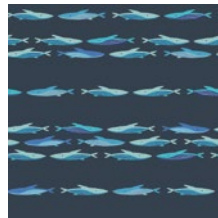
**SRN-5355**  
KELP SUNSHINE



**SRN-5353**  
CALAMAR CORAL



**SRN-5354**  
OCEAN FLORET BREEZE



**SRN-5351**  
OCEANIA NIGHTLIGHT



**SRN-5356**  
ANANAS AQUA



FEEL THE DIFFERENCE © 2018 Courtesy of Art Gallery Quilts LLC. All Rights Reserved.

# Ananas

FINISHED SIZE | 6"x3"

## FABRIC REQUIREMENTS

Fabric <b>A</b>	SRN-5356	½ yd.
Fabric <b>B</b>	PE-435	½ yd.
Fabric <b>C</b>	PE-442	½ yd.
Fabric <b>D</b>	SRN-6356	½ yd.
Fabric <b>E</b>	PE-475	½ yd.
Fabric <b>F</b>	PE-411	½ yd.

## ADDITIONAL MATERIAL

- **Cork Material**

## CUTTING DIRECTIONS

*¼" seam allowances are not included in this template. Make sure to add WOF means width of fabric.*

- Eight (8) 1" x 6" strips from Fabrics **C, E**
- Six (6) 1" x 6" strips from Fabrics **B, F**
- One (1) Template 2 from Fabrics **A, D**
- One (1) Template 1 from Fabrics **C, E**
- One (1) Template 3 from Fabrics **B, C, E, F**
- One (1) 4½" x 2½" rectangle from Fabric **A, B, D, E,**

## CONSTRUCTION

- Start by pairing three (3) strip from Fabric B with four (4) strips from Fabric C alternating each other as diagram below.

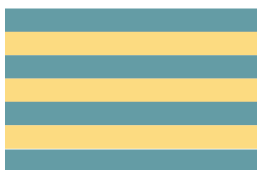


Diagram 1

- Trace your Template 1 and cut.



Diagram 2

- Take your Fabric A cutout template and quilt if desired.
- In this case, dont use batting since this will occur your coasters to be too thick.

- Take you cork material and trace your Template 3 pineapple shape
- Cut



Diagram 3

- Now, place your Template 1 assembled piece and your Template 2 from Fabric A piece and place them on top of your cork cutout.
- Top stitch all around to secure your Template pieces.

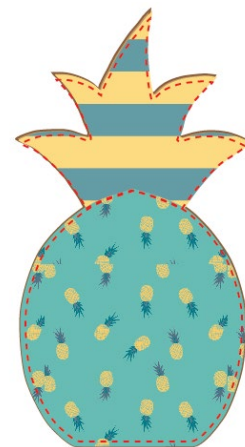


Diagram 4

- Repeat the same instruction for the other coaster

- Take your 4½ x 2½" rectangles from Fabric A and B and pair them together

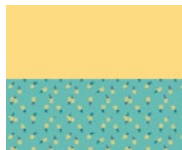


Diagram 4

- Rotate your piece to a 45 degree angle
- Take your Template 2 piece, trace and cut.

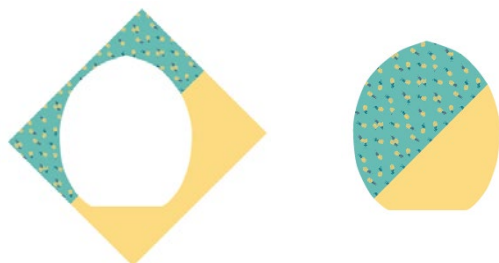


Diagram 5

- Quilt as desired
- Take your Template 3 cork cutout piece, place your Template 1 from Fabric C and your cutout Template 2 shape piece on top of the cork.
- Topstitch all around to secure your pieces.

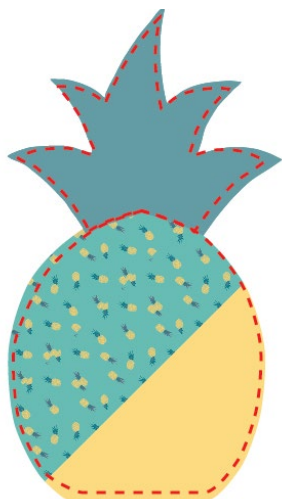


Diagram 6

- Repeat the same process for your other coaster
- Enjoy four fun pineapple coasters!



FEEL THE DIFFERENCE

[artgalleryfabrics.com](http://artgalleryfabrics.com)

NOTE: While all possible care has been taken to ensure the accuracy of this pattern, We are not responsible for printing errors or the way in which individual work varies. Please read instructions carefully before starting the construction of this quilt. If desired, wash and iron your fabrics before starting to cut.

© 2018 Courtesy of Art Gallery Quilts LLC. All Rights Reserved.

