

X
X
X
X
X
X
X
X
X
X
X
X

Spontaneous



XXXXXXXXXXXXXXXXXXXX



Spontaneous

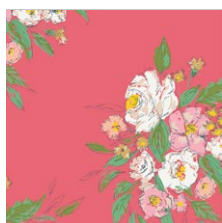
QUILT DESIGNED BY AGFstudio

Signature

FABRICS DESIGNED BY SHARON HOLLAND



FOLIAR



SGN-68700
EXTEMPORE CELEBRATION



SGN-68701
FLORA AND FAUNA HIDDEN



SGN-68703
FRITILLARY SHADOW PLAY



SGN-68704
LACEY COSMOS



SGN-68705
TRAVELER PEBBLES



SGN-68708
UNTAMED BEAUTY DAYBREAK



SGN-68711
VENTURE FORWARD



SGN-68713
SMALL WORLD SPRIGHTLY

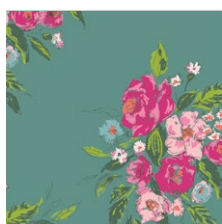


SGN-68710
LATERAL BUD PROFUSION



SGN-68707
TENDER ARRANGEMENT

ATMOSPHERIC



SGN-58700
EXTEMPORE FANCY



SGN-58701
FLORA AND FAUNA MILIEU



SGN-58702
SEED HEAD WINDSWEPT



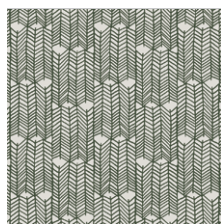
SGN-58704
LACEY STARDUST



SGN-58705
TRAVELER RAINDROPS



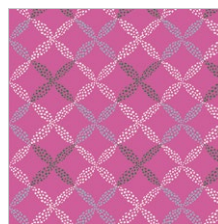
SGN-58708
UNTAMED BEAUTY TWILIGHT



SGN-58711
VENTURE CARAVAN



SGN-58712
A ROSE IS A ROSE FOREVER



SGN-58709
SPORANGIA PLAID DOTTED



SGN-58706
PATIO GARDEN GREEN THUMB



FEEL THE DIFFERENCE © 2018 Courtesy of Art Gallery Quilts LLC. All Rights Reserved.



FINISHED SIZE | 90"x99"

FABRIC REQUIREMENTS

Fabric A	SGN-58709	1 1/8 yds
Fabric B	SGN-58704	3/4 yd.
Fabric C	SGN-58705	5/8 yd.
Fabric D	SGN-58708	5/8 yd.
Fabric E	SGN-58706	5/8 yd.
Fabric F	SGN-68713	1 yd.
Fabric G	SGN-68704	1 yd.
Fabric H	SGN-68703	1 1/4 yd.
Fabric I	SGN-58701	1 1/6 yd.
Fabric J	PE-470	2 1/8 yd.
Fabric K	PE-425	1 1/8 yd.
Fabric L	PE-401	1 1/8 yd.
Fabric M	PE-454	1 yd.

BACKING FABRIC

SGN-58706- 6 yds. *(Suggested)*

BINDING FABRIC

SGN-PE-454 (Fabric **M**) *(Included)*

CUTTING PREPERATIONS

Fabric **A**

- Ten (10) 3.5 x WOF stripes

Fabric **B**

- Six (6) 3.5 x WOF stripes

Fabric **C**

- Five (5) 3.5 x WOF stripes.

Fabric **D**

- Five (5) 3.5 x WOF stripes.

Fabric **E**

- Five (5) 3.5 x WOF stripes.

Fabric **F**

- Nine (9) 3.5 x WOF stripes

Fabric **G**

- Eight (8) 3.5 x WOF stripes.

XXXXXXXXXXXXXXXXXXXXXXXXXXXXXXXXXXXX

Fabric **H**

- Two (2) 3.5 x WOF stripes

Fabric **I**

- One (1) 3.5 x WOF stripes

Fabric **J**

- Twenty (20) 3.5 x WOF stripes.

Fabric **K**

- Ten (10) 3.5 x WOF stripes.

Fabric **L**

- Ten (10) 3.5 x WOF stripes..

Fabric **M**

- Five (5) 3.5 x WOF stripes

CONSTRUCTION

Sew all rights sides together with 1/4" seam allowance.

- Arrange fabrics per color and sew the stripes as shown on diagram 1
- Repeat this step 4 more times until you get 5 sections



DIAGRAM 1

- Now that we have all stripes sewn, Grab a rotary cutter and sub cut 3.5" stripes to create **Stripe Set a**



DIAGRAM 2

For the center of the quilt, you will need:

- Five (5) WOF stripes from fabric M.
- Four (4) WOF stripes from fabric F.
- Three (3) WOF stripes from fabric G.
- Two (2) WOF stripes from fabric H.
- One (1) stripe from letter I.
- Left overs from fabric B

Now cut the stripes in half.



DIAGRAM 3

Stripe Set b

- Get two stripes from fabric M and one (1) from fabric F. Sew them and sub cut six (6) 3.5" stripes

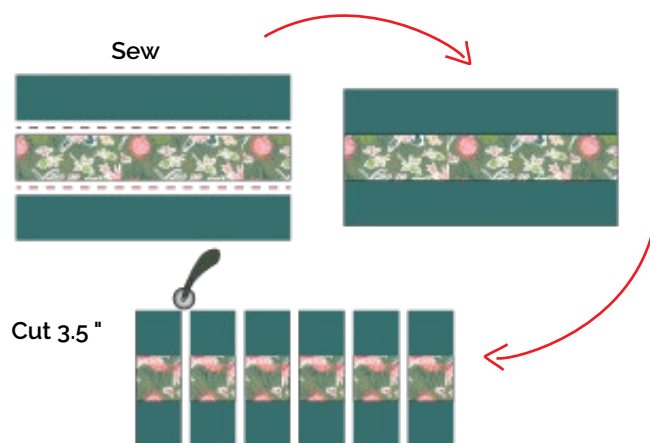


DIAGRAM 4

Stripe Set c

- For Stripe Set C, grab two (2) stripes from fabric M, two (2) stripes from fabric F, and one (1) stripe from fabric G. Sew them together and sub cut six (6) 3.5" stripes.

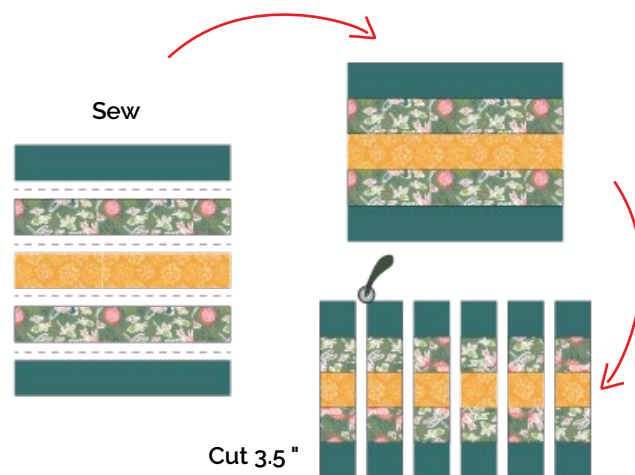


DIAGRAM 5

Stripe Set d

- For Stripe Set d, grab two (2) stripes from fabric M, two (2) stripes from fabric F, two (2) stripe from fabric G, and one (1) stripe from fabric H Sew them together and sub cut six (6) 3.5" stripes.

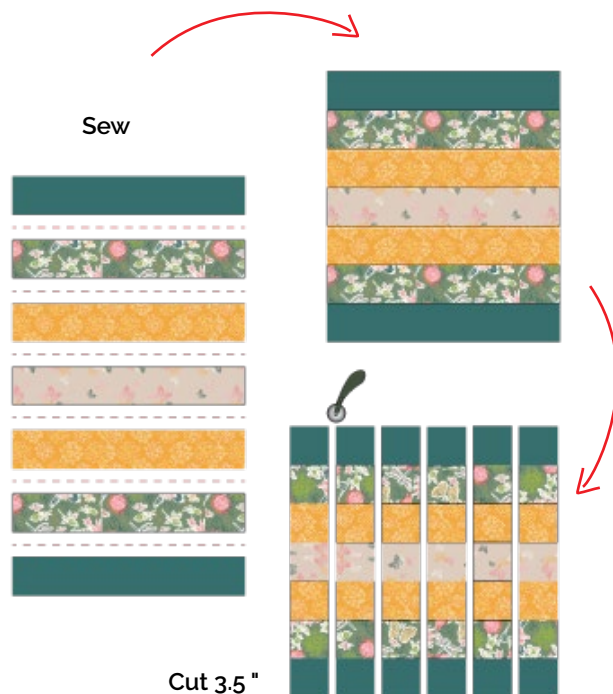


DIAGRAM 6

Stripe Set e

For Stripe Set e, grab two (2) stripes from fabric **M**, two (2) stripes from fabric **F**, two (2) stripes from fabric **G**, and two (2) stripes from fabric **H**, and one (1) stripe from fabric **I** Sew them together and sub cut four (4) 3.5" stripes.



DIAGRAM 7

Stripe Set f

For Stripe Set f, grab one(1) stripe from fabric **M**, one (1) stripe from fabric **F**, one(1) stripe from fabric **G**, one (1) stripe from fabric **H**,one (1) stripe from fabric **I** and one (1) stripe from fabric **B**. Sew them together and sub cut two (2) 3.5" stripes. (at this point you will not have stripes for fabrics I and b, you can use left over fabrics)

XX



DIAGRAM 8

Stripe Set g

For Stripe Set g, grab left over fabrics from fabrics **M**, **F**, **G,H,I** and for fabric **B** cut a ten and a half (10.5") rectangle see diagram below

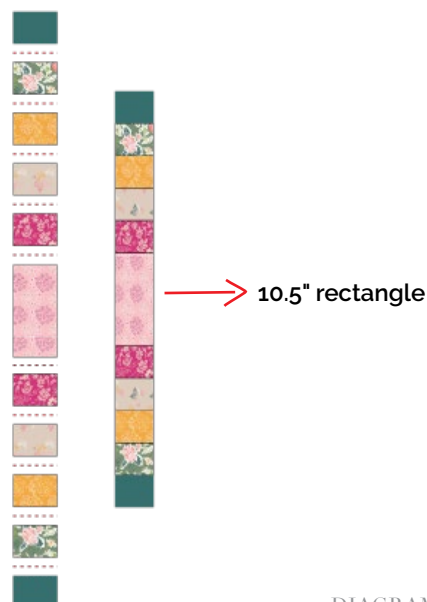


DIAGRAM 9

- Column 1 and column 29, attach **Stripe Set a** → 3.5" Square from fabric **M** → **Stripe Set a**.
- Column 2 and column 28, attach **Stripe Set a** → **Stripe Set b** → **Stripe Set a**
- Column 3 and column 27, attach **Stripe Set a** → **Stripe Set C** → **Stripe Set a**
- Column 4 and column 26, attach **Stripe Set a** → **Stripe Set d** → **Stripe Set a**
- Column 5 and column 25, attach **Stripe Set a** → **Stripe Set e** → **Stripe Set a**
- Column 6 and column 24, attach **Stripe Set a** → **Stripe Set d** → **Stripe Set a**
- Column 7 and column 23, attach **Stripe Set a** → **Stripe Set c** → **Stripe Set a**
- Column 8 and column 22, attach **Stripe Set a** → **Stripe Set b** → **Stripe Set a**

Follow Diagram below for fabric placement and attachments,

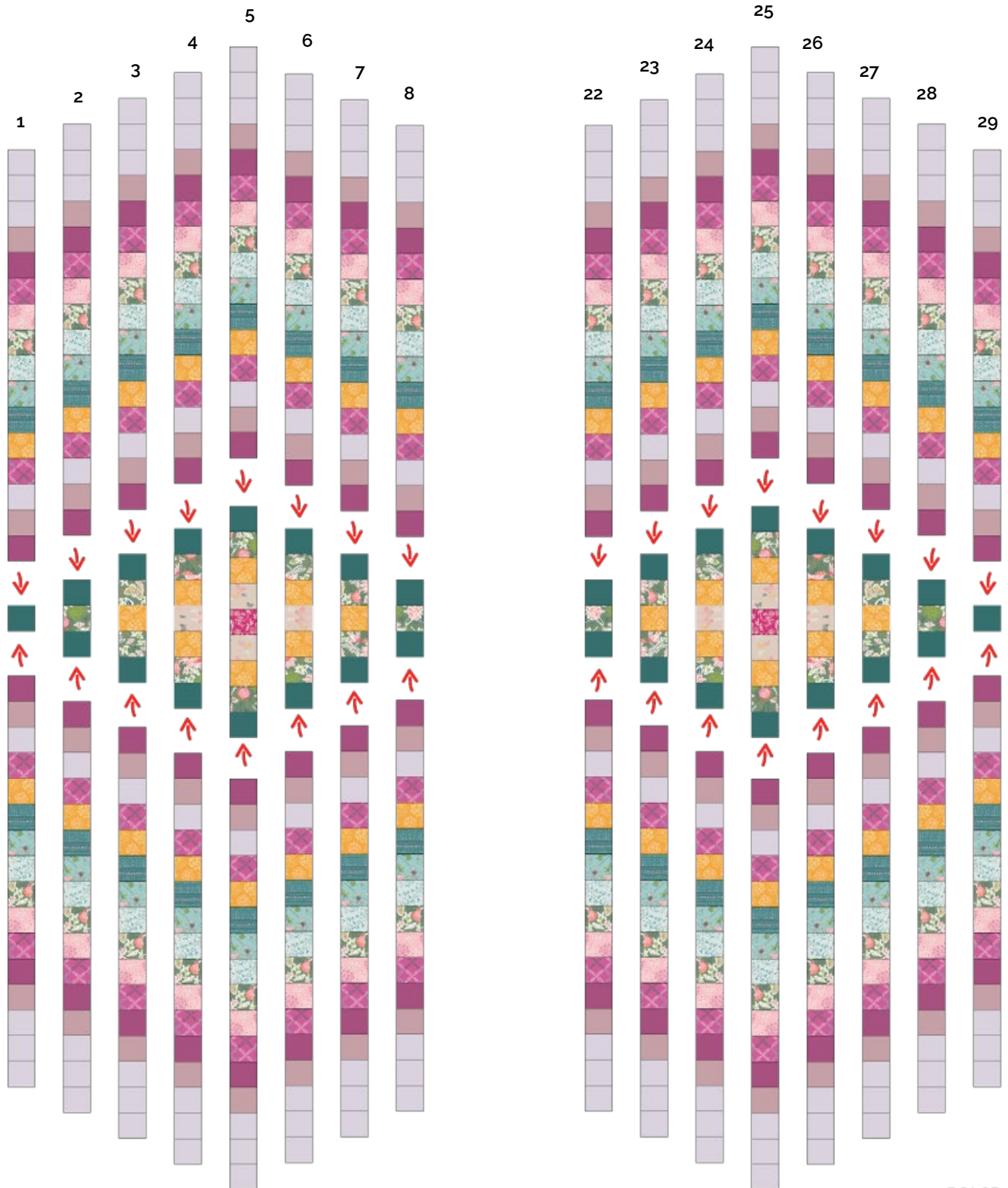


DIAGRAM 9

- Column 9 and column 21, attach **Stripe Set a** → **3.5" Square from fabric M** → **Stripe Set a**.
- Column 10 and column 20, attach **Stripe Set a** → **Strip Set b** → **Strip Set a**.
- Column 11 and column 19, attach **Stripe Set a** → **Stripe Set c** → **Stripe set a**.
- Column 12 and column 18 attach **Stripe Set a** → **Stripe Set d** → **Stripe Set a**.
- Column 13 and column 17, attach **Stripe Set a** → **Stripe Set e** → **Stripe Set a**.
- Column 14 and column 16, attach **Stripe Set a** → **Stripe Set f** → **Stripe Set a**.
- Column 15, **Stripe Set a** → **Stripe Set g** → **Stripe Set a**

Follow Diagram below for fabric placement and attachments.

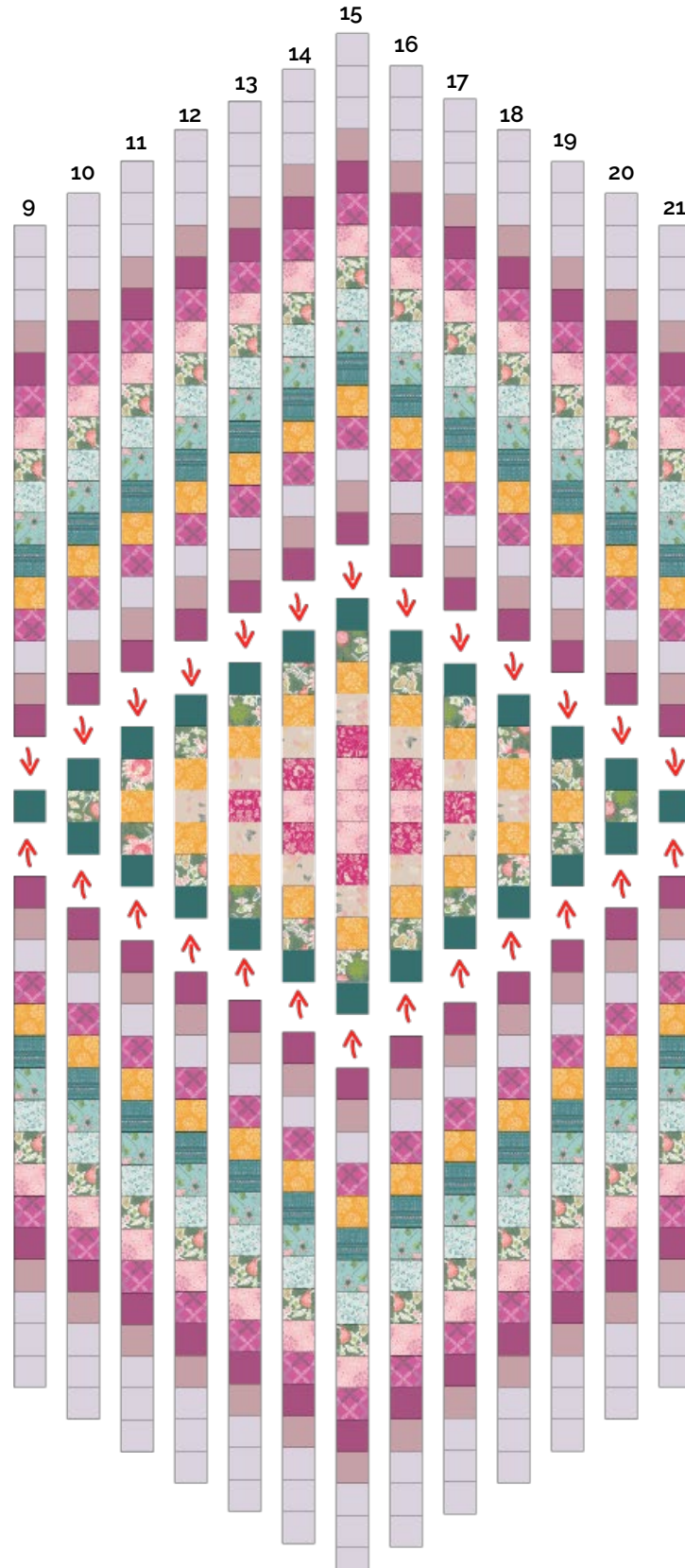
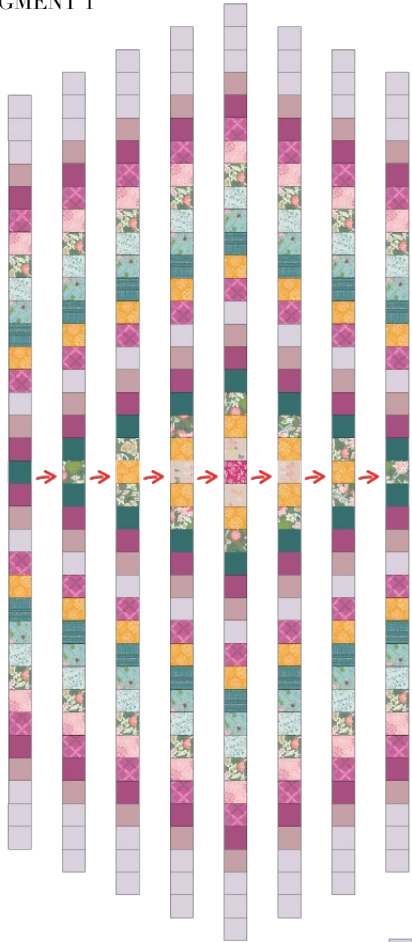


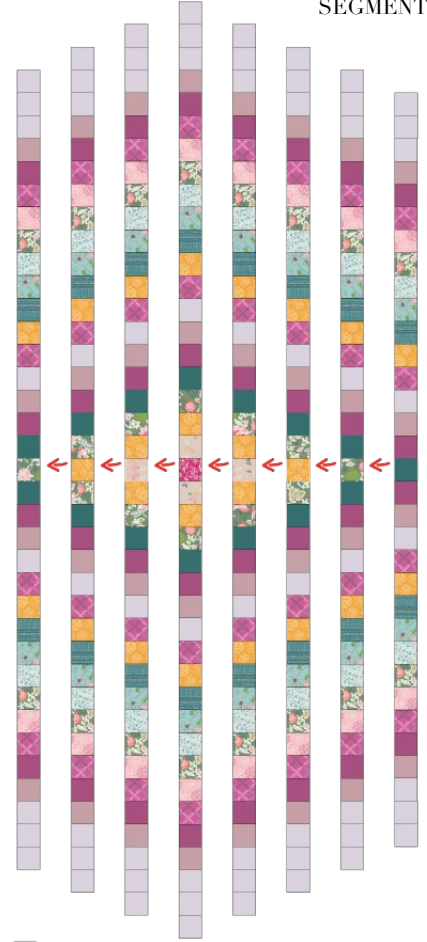
DIAGRAM 10

- After you have attached all the stripes sets as shown on diagram 9 and 10, the next step is sew the columns together to create segment 1,2 and 3

SEGMENT 1



SEGMENT 2



SEGMENT 3

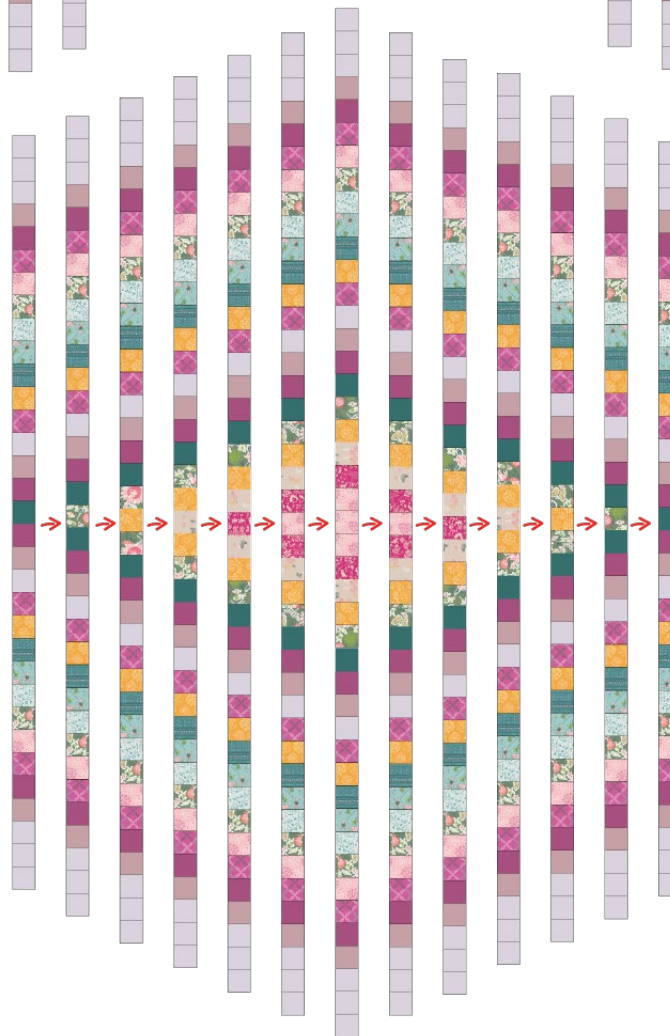


DIAGRAM 11

- Now sew segment 1,2 and 3

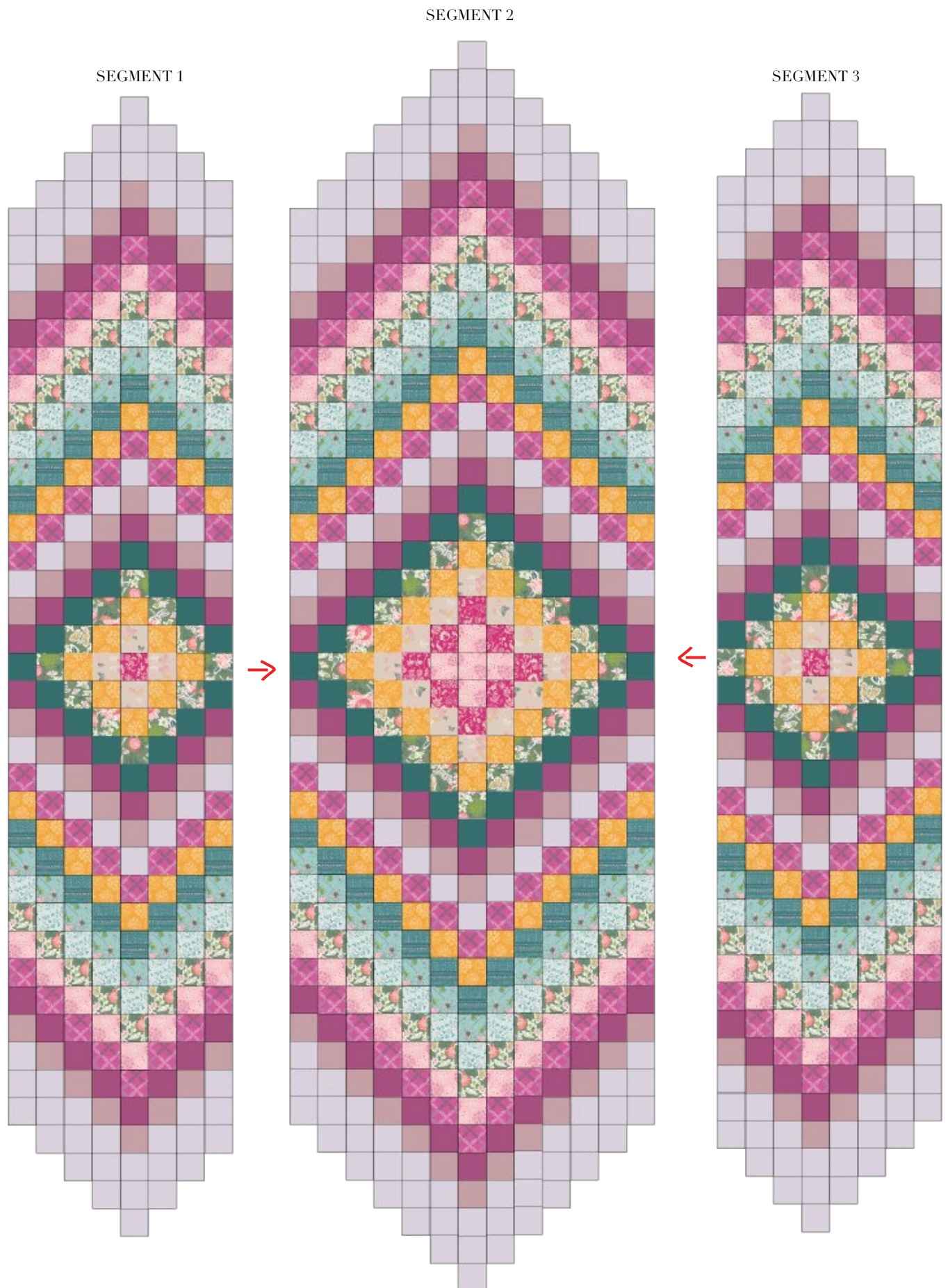


DIAGRAM 12



artgalleryfabrics.com

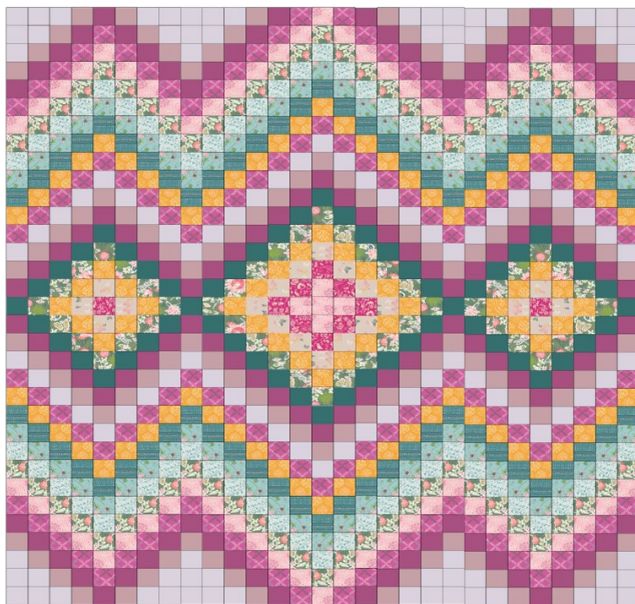


DIAGRAM 14

QUILT ASSEMBLY

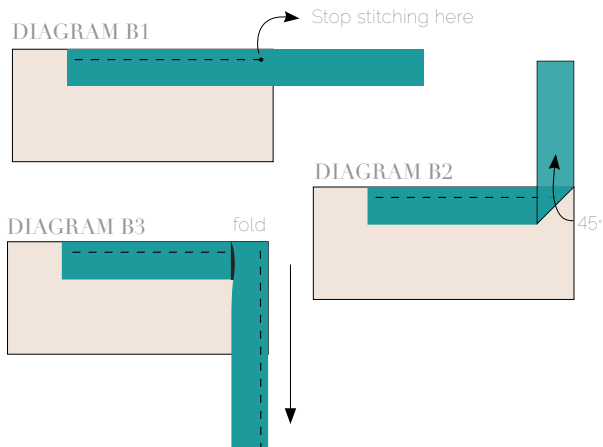
Sew rights sides together

- Place BACKING FABRIC on a large surface wrong side up. Stretch it with masking tape against that surface.
- Place BATTING on top of backing fabric.
- Place TOP on top of the batting with right side facing up. Smooth away wrinkles using your hands.
- Pin all layers together and baste with basting thread, using long stitches. You can also use safety pins to join the layers.
- Machine or hand quilt starting at the center and working towards the corners. Remember that quilting motifs are a matter of personal preference. Have fun choosing yours!
- After you finished, trim excess of any fabric or batting, squaring the quilt to proceed to bind it.

BINDING

Sew rights sides together.

- Cut enough strips 1 ½" wide by the width of the fabric **M** to make a final strip 388" long. Start sewing the binding strip in the middle of one of the sides of the quilt, placing the strip right side down and leaving an approximated 5" tail. Sew with ¼" seam allowance (using straight stitch), aligning the strip's raw edge with the quilt top's raw edge.
- Stop stitching ¼" before the edge of the quilt (**DIAGRAM B 1**). Clip the threads. Remove the quilt from under the machine presser foot. Fold the strip in a motion of 45° and upward, pressing with your fingers (**DIAGRAM B 2**). Hold this fold with your finger, bring the strip down in line with the next edge, making a horizontal fold that aligns with the top edge of the quilt (**DIAGRAM B 3**). Start sewing at ¼" of the border, stitching all the layers. Do the same in the four corners of the quilt.
- Stop stitching before you reach the last 5 or 6 inches. Cut the threads and remove the quilt from under the machine presser foot. Lay the loose ends of the binding flat along the quilt edge, folding the ends back on themselves where they meet. Press them together to form a crease. Using this crease as the stitching line, sew the two open ends of the binding with right sides together (you can help yourself marking with a pencil if the crease is difficult to see).
- Trim seam to ¼" and press open. Complete the sewing. Turn binding to back of the quilt, turn raw edge inside and stitch by hand using blind stitch.



XXXXXXXXXXXXXXXXXXXXXXXXXXXXXXXXXXXX

Congratulations
& enjoy

XXXXXXXXXXXXXXXXXXXXXXXXXXXXXXXXXXXX



artgalleryfabrics.com

NOTE: While all possible care has been taken to ensure the accuracy of this pattern, We are not responsible for printing errors or the way in which individual work varies. Please read instructions carefully before starting the construction of this quilt. If desired, wash and iron your fabrics before starting to cut.

© 2018 Courtesy of Art Gallery Quilts LLC. All Rights Reserved.