

papili

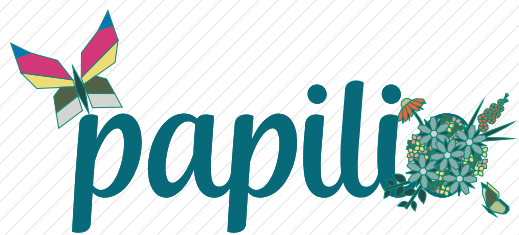


FREE PATTERN

XXXXXXXXXXXXXXXXXXXXXXXXXXXX

ANGLES

A DIVISION OF AGF



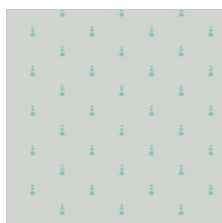
DESIGNED BY AGF STUDIO

loved to PIECES

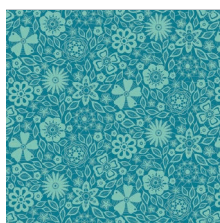
FABRICS DESIGNED BY MATHEW BOUDREAU



BLUE BINDED



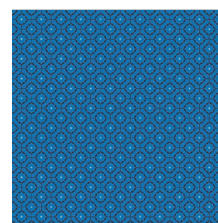
LPC-1426
TOPIARY FROST



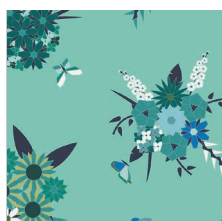
LPC-1424
LACED INFINITY



LPC-1423
STRIPED FLOW MARINE



LPC-1422
REAP AND SEW AZUL



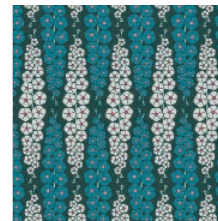
LPC-1421
PIECED BUNCHES COOL



LPC-1420
ANTHONEM SERENE

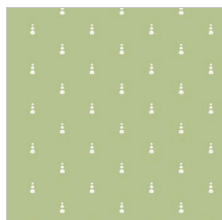


LPC-1428
MANDALA DROPS MIDNIGHT



LPC-1427
GLADIOLUMNS INBLUEM

FUSED HUES



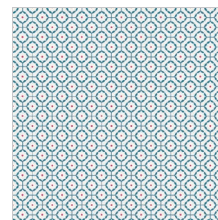
LPC-2426
TOPIARY FERN



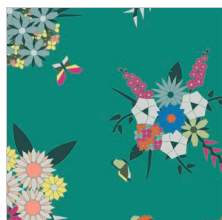
LPC-2425
EFFLORESCENT FUSCHIA



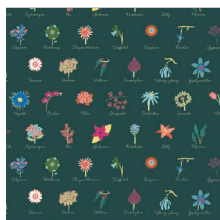
LPC-2423
STRIPED FLOW RAINBOW



LPC-2422
REAP AND SEW LIGHT



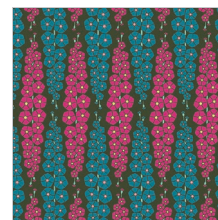
LPC-2421
PIECED BUNCHES WILD



LPC-2420
ANTHONEM FESTIVE



LPC-2428
MANDALA DROPS IRIS



LPC-2427
GLADIOLUMNS PINKBLUEM



FEEL THE DIFFERENCE © 2018 Courtesy of Art Gallery Quilts LLC. All Rights Reserved.



FINISHED SIZE | 30" x 32"

FABRIC REQUIREMENTS

Fabric A	LPC-2420	FQ.
Fabric B	LPC-2425	FQ.
Fabric C	LPC-1426	F8.
Fabric D	LPC-1422	F8.
Fabric E	PE-402	¾ yd.
Fabric F	PE-435	F8.

CUTTING DIRECTIONS

¼" seam allowances are included.
WOF means width of fabric.

Since this scarf is made using the paper piecing technique, the fabric will be cut as used.

CONSTRUCTION

Sew all rights sides together with ¼" seam allowance.

- The butterfly is composed of eight (8) blocks
- Four blocks make half of the butterfly, and the other four are the vertical reflection to make the other half of the symmetrical butterfly.

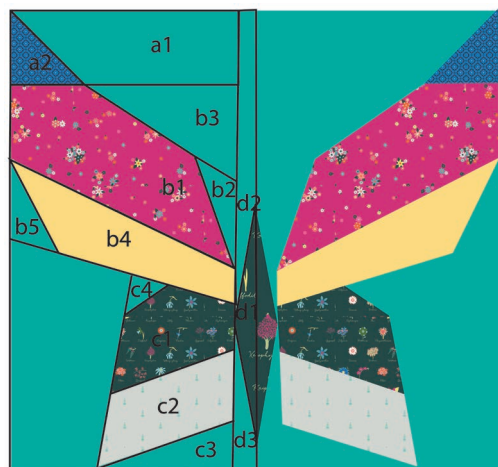


DIAGRAM 1

- The first half is made of blocks **a**, **b**, **c** and **d**.

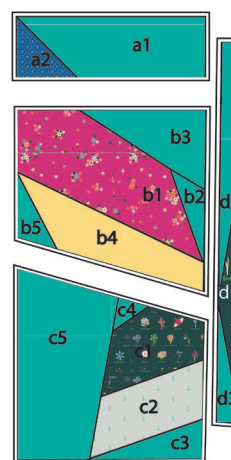


DIAGRAM 2

- The second half is made of blocks **e**, **f**, **g** and **h**.

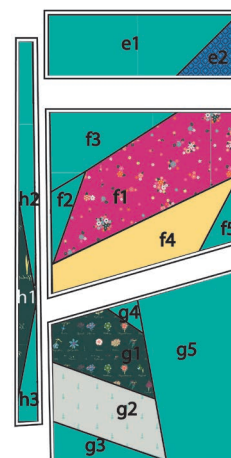
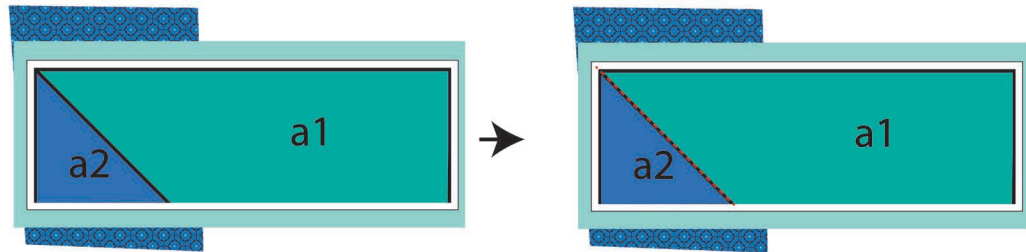


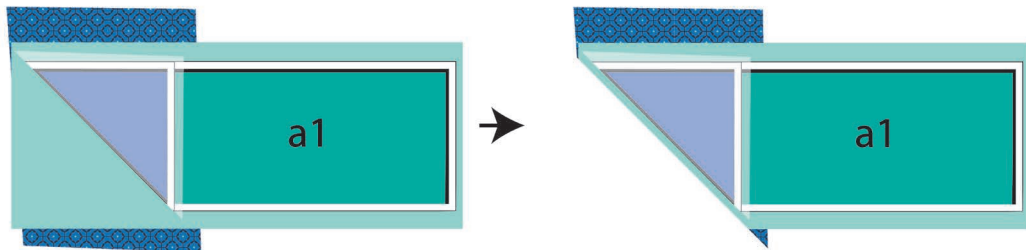
DIAGRAM 3

- Paper Piece:
- Paper piece consist of using paper to guide your self while sewing.
- First you need to have your templates ready.
- As an example block **a** would be constructed as follows:
- Take a piece from fabrics **D** and **E** place them face to face.
- Place template **a** on the back of fabric **E** and saw trough the line.
- Fold the paper on the sewn line and trim the fabric ¼" from the stitch.
- Unfold the paper and open fabric **D** from fabric **E** and press.
- Trim the excess fabric from the template.
- The template is ready with the ¼" seam allowance.

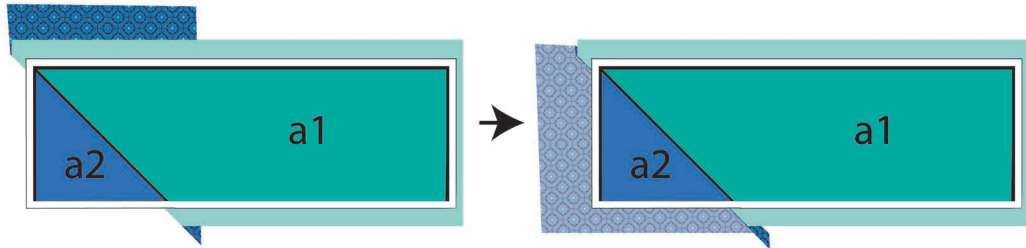
Place fabrics with template and sew through the line.



Fold paper and trim at $\frac{1}{4}$ " from stitched line.



Open paper and fabrics and press.



Trim excess fabric from template to get block with seam allowance.

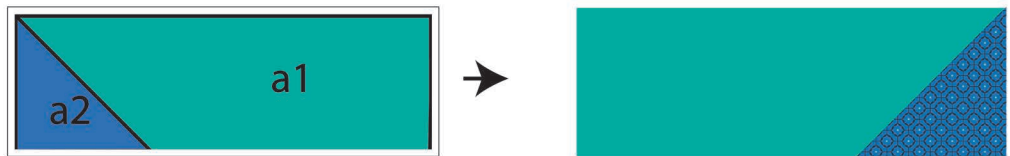


DIAGRAM 4

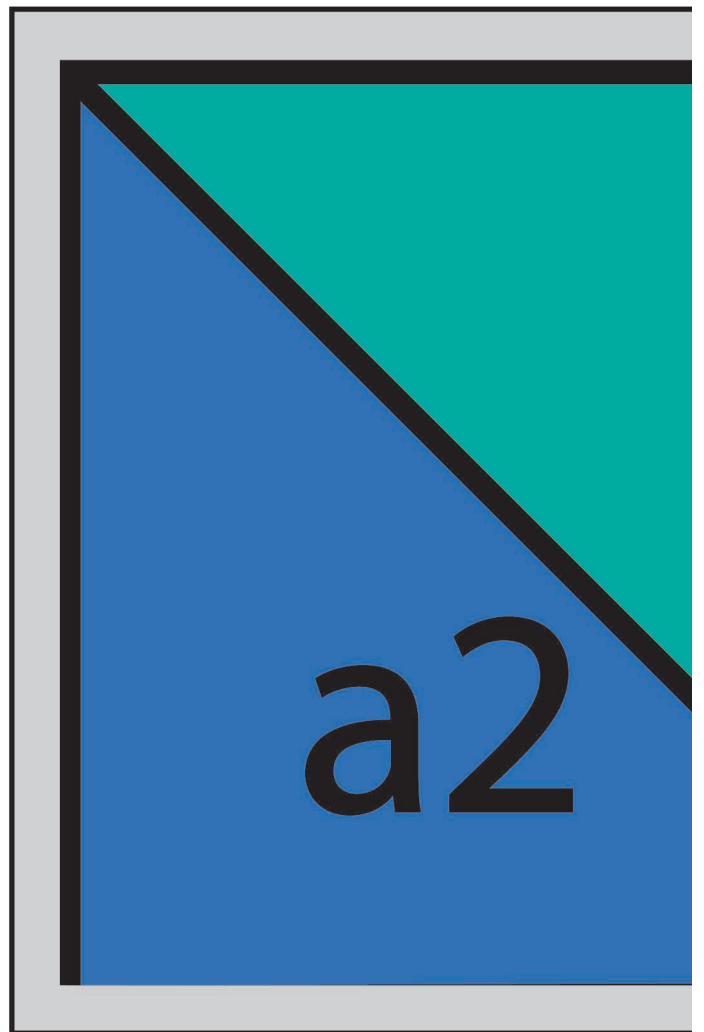
- Make sure to use a stitch between 1 - 2 so it is easier to remove the paper once the whole piece is finished.
- Do not remove the paper until you have joined all the blocks.
- This will make sure your points are perfect and symmetrical.



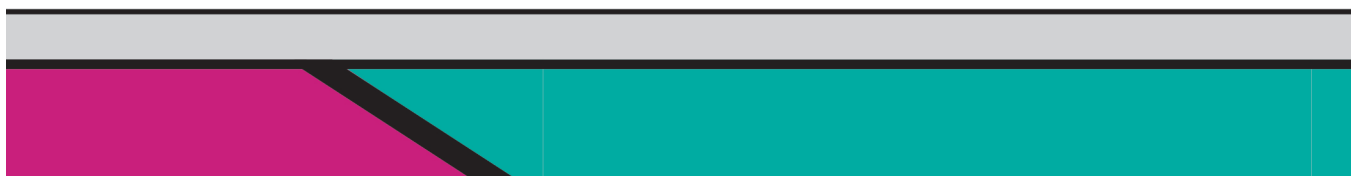
artgalleryfabrics.com

NOTE: While all possible care has been taken to ensure the accuracy of this pattern, We are not responsible for printing errors or the way in which individual work varies. Please read instructions carefully before starting the construction of this quilt. If desired, wash and iron your fabrics before starting to cut.

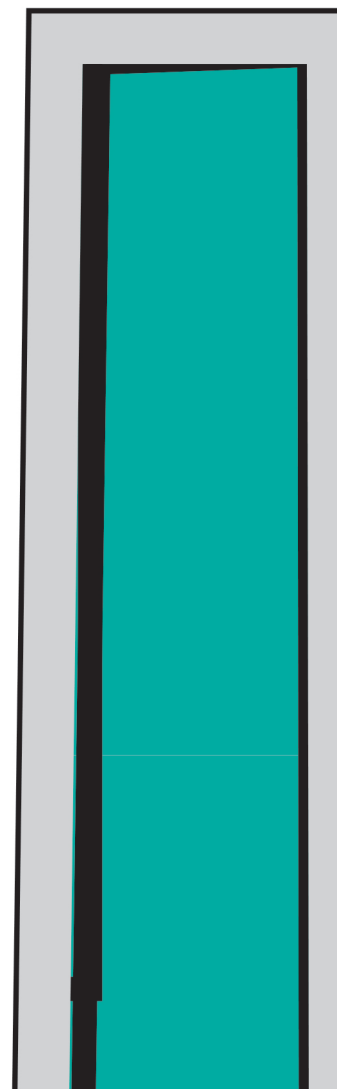
1*



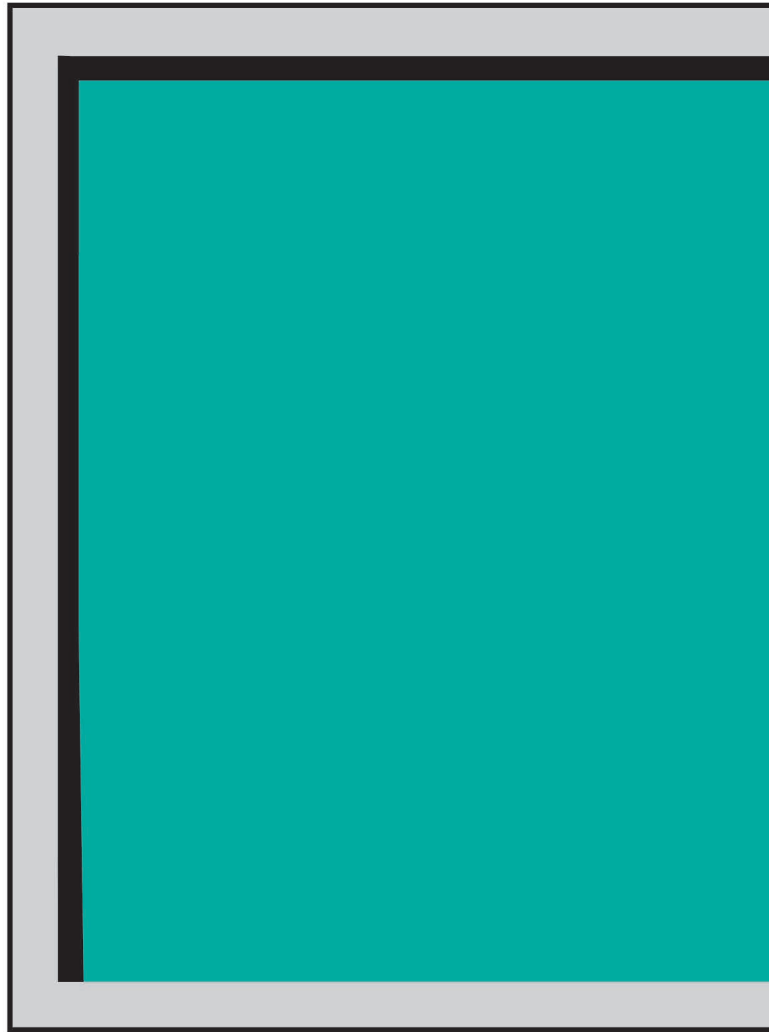
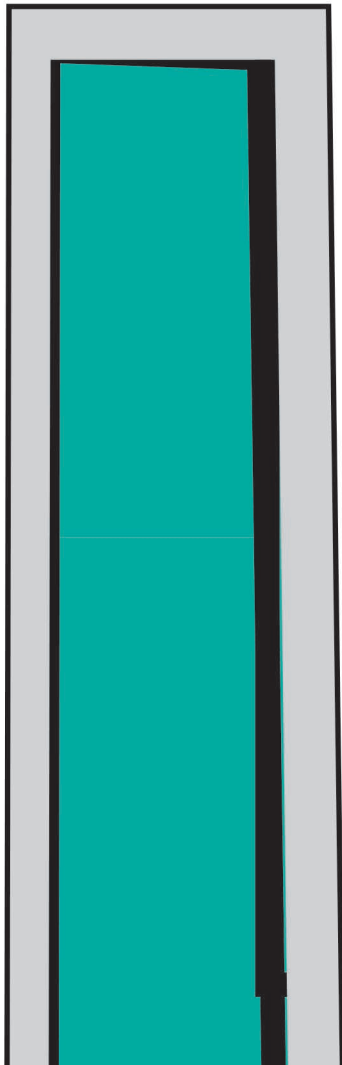
2*



3*



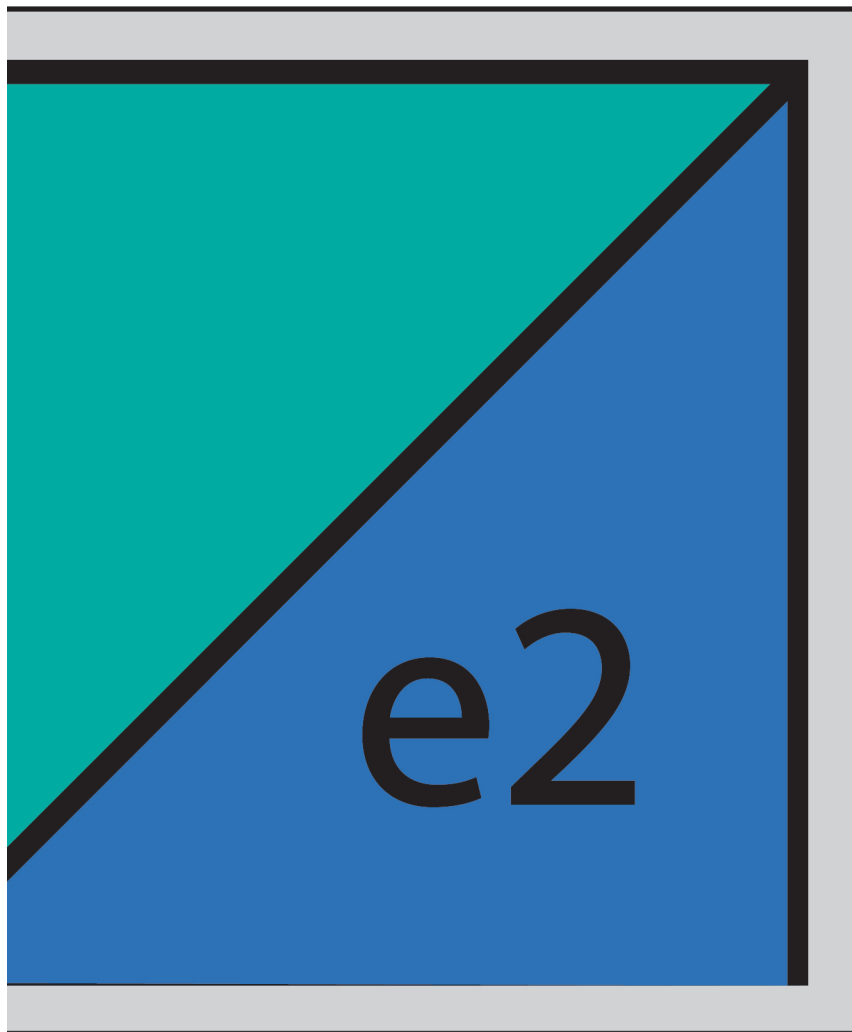
Journal of Management Inquiry 26(4) 391-407



5*

e1

6*



1**



2**

b1

b4

Id 2



h2

f3

f2

5**

f1

f4

An abstract geometric design featuring a large pink triangle at the top, a yellow triangle in the middle, and a teal triangle at the bottom right. The text '6**' is written in orange in the pink area, and 'f5' is written in black in the teal area. The design is framed by a thin black border.

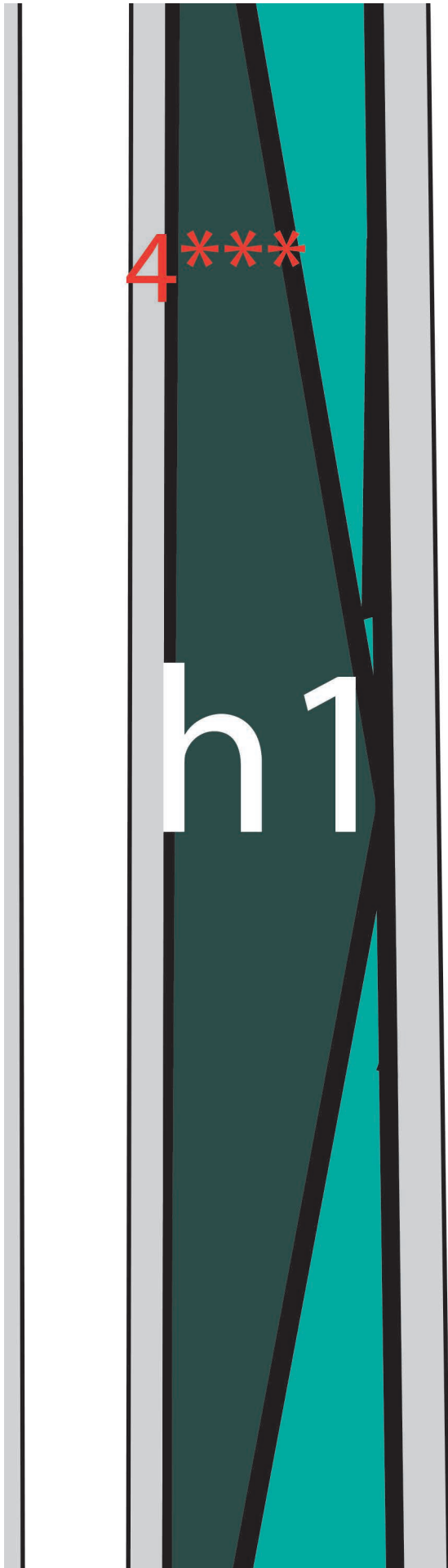
1***

c5

An abstract geometric composition featuring a large yellow triangle in the upper left, a pink triangle in the upper right, and a teal triangle in the top right corner. A grey border frames the entire composition. The text '3***' is written in red in the upper left area. A large dark green rectangle occupies the lower half of the image, and a light grey rectangle is in the bottom right corner.

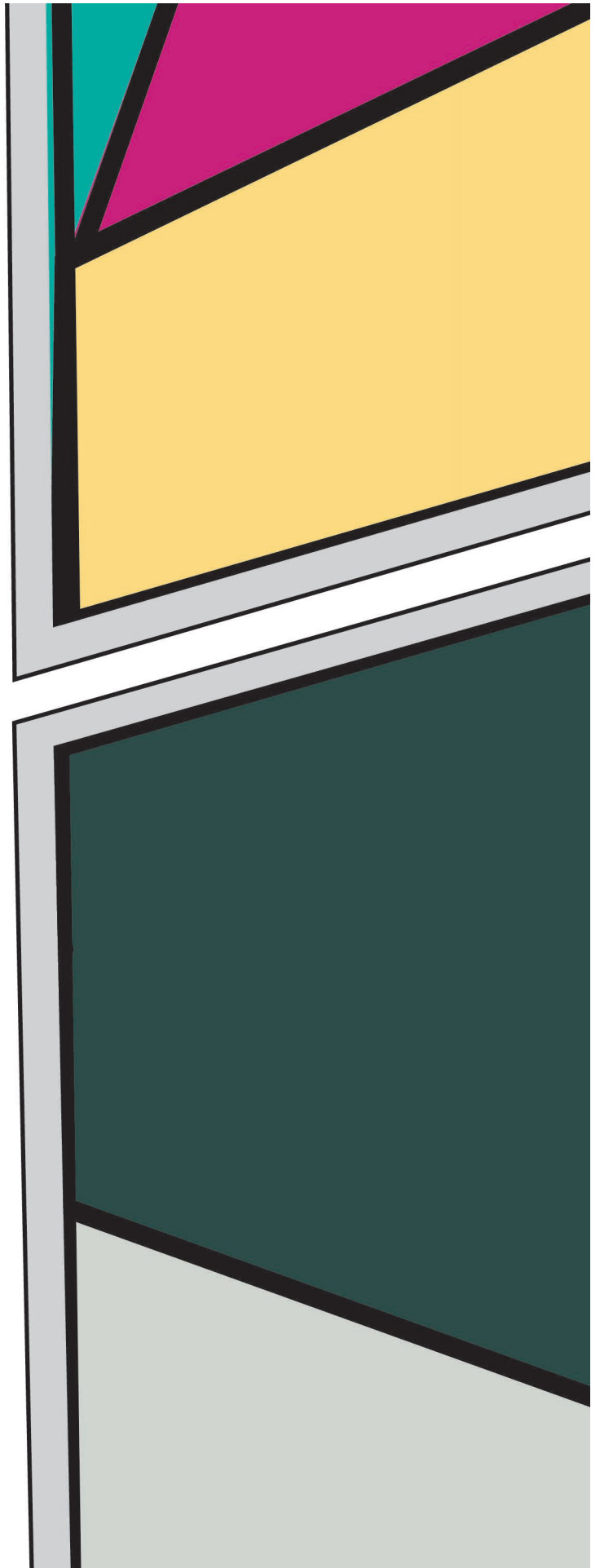


d1



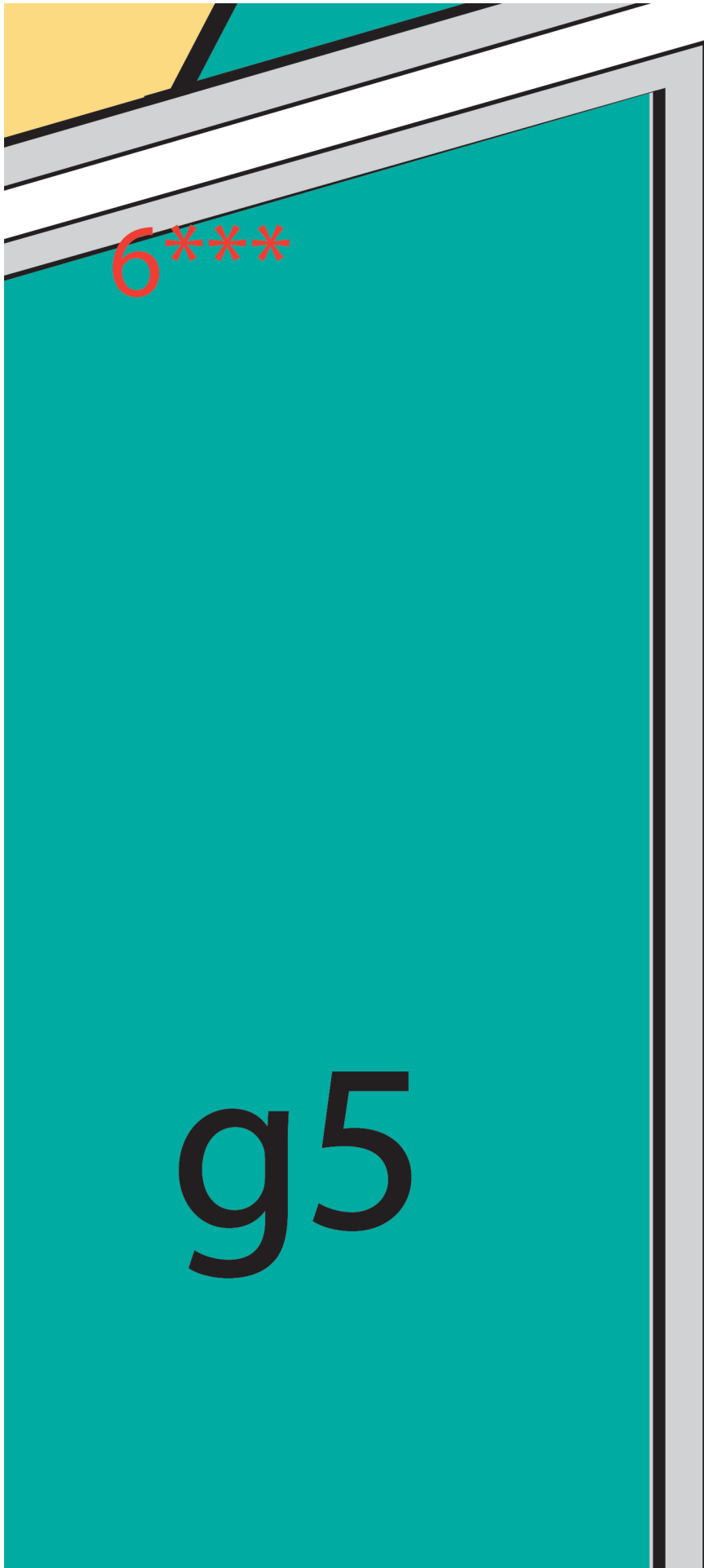
4***

h1

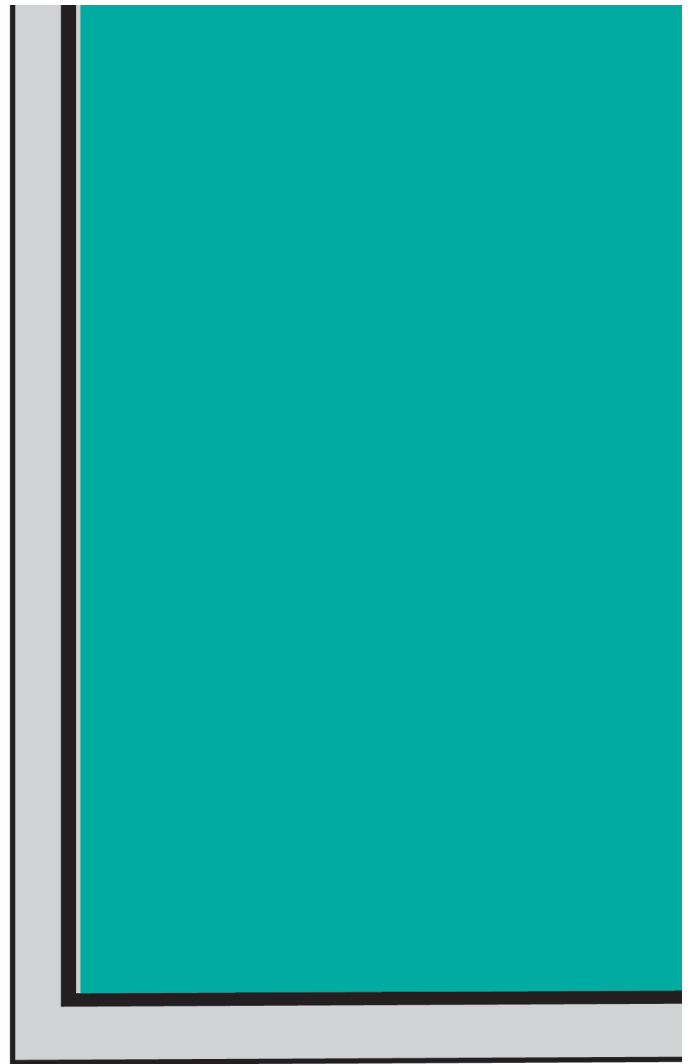


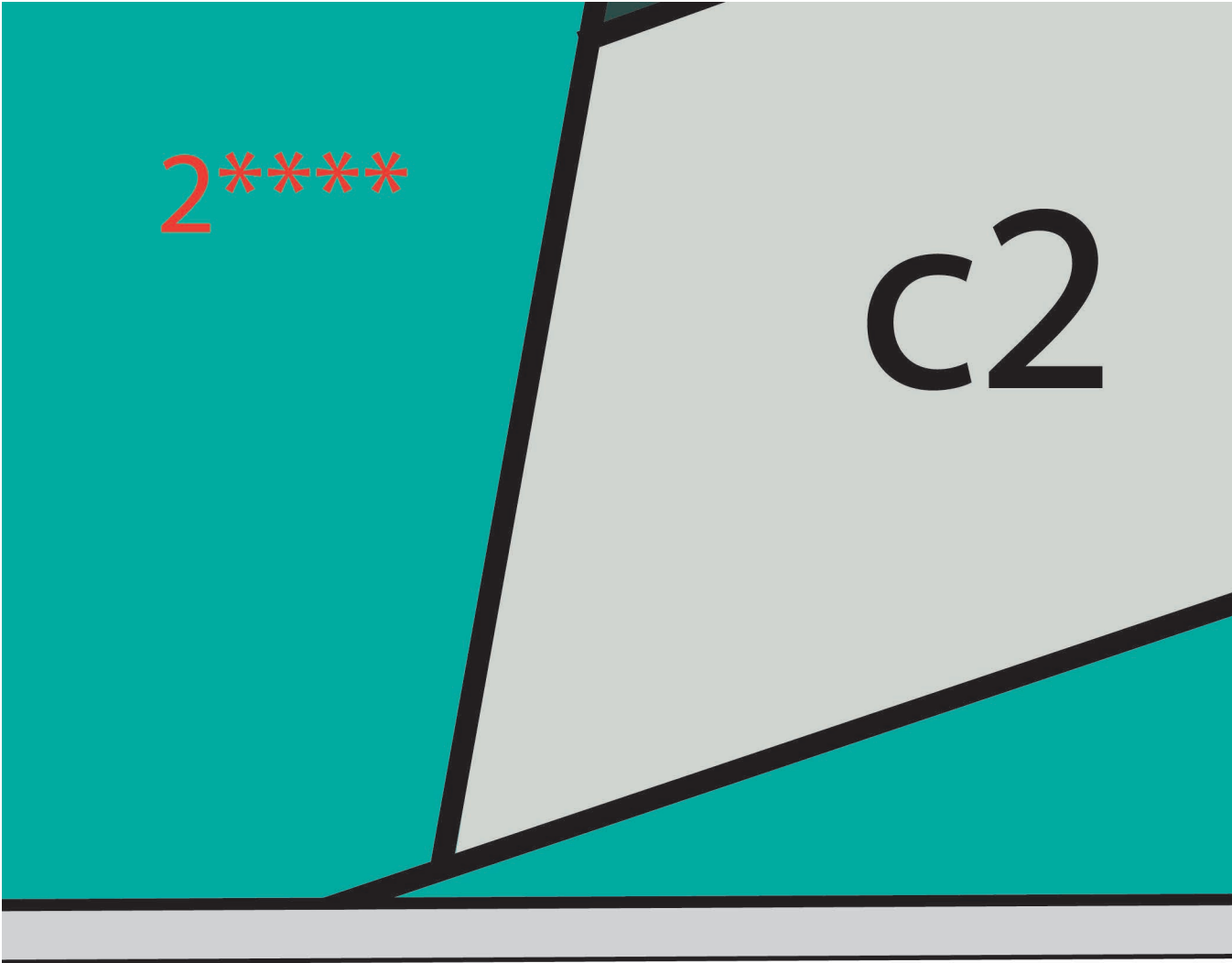
Page 10 of 10

g4



1 ****

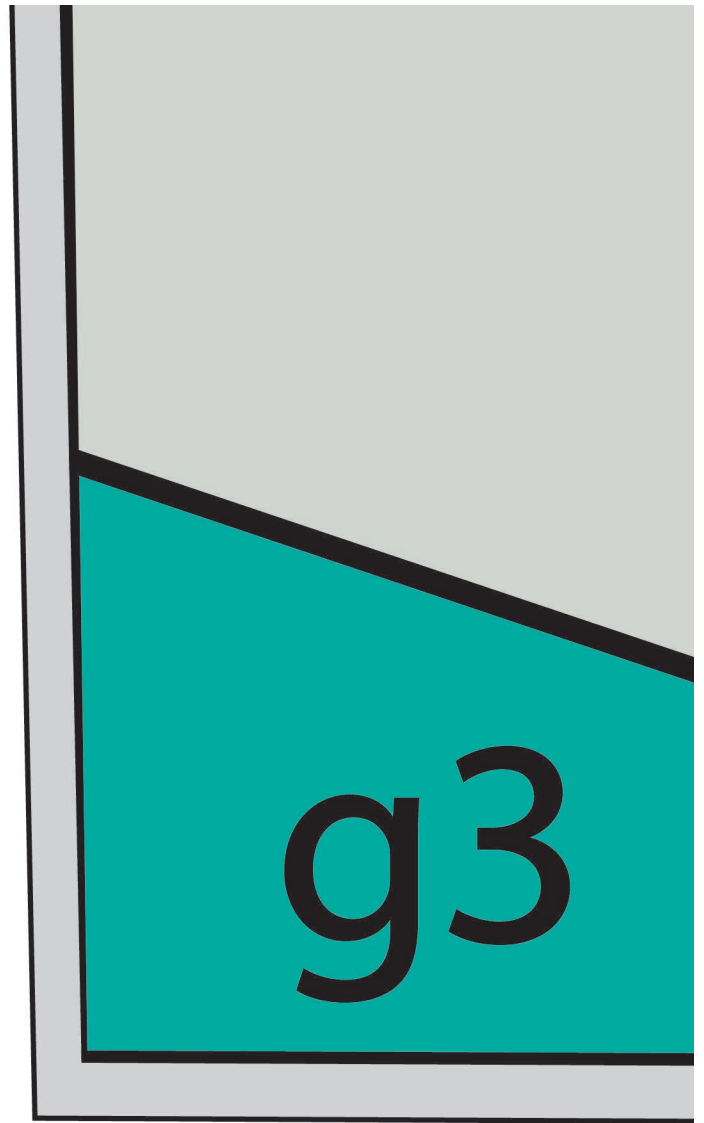
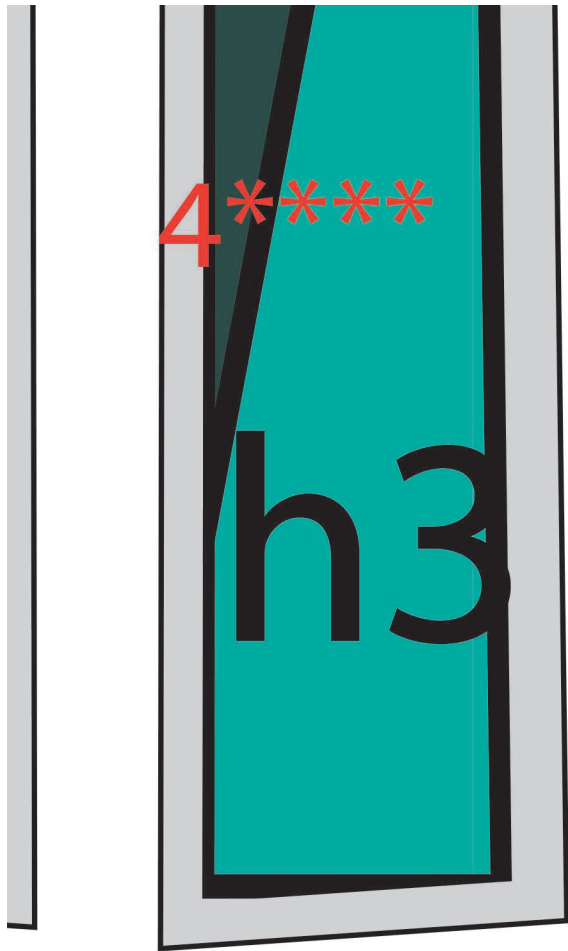




3****

c3





5****g2

6*****