

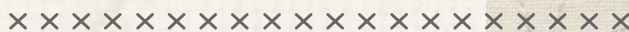
# *Cubist* **Illusion**



**▲ N G L E S**

A DIVISION OF **AGF**

**FREE PATTERN**





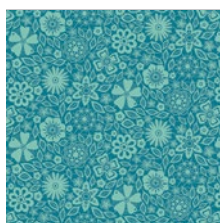
loved to  
PIECES

FABRICS DESIGNED BY MATHEW BOUDREAUX

BLUE BINDED



LPC-1426  
TOIARY FROST



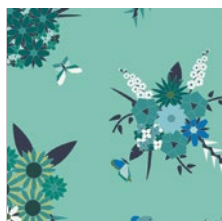
LPC-1424  
LACED INFINITY



LPC-1423  
STRIPED FLOW MARINE



LPC-1422  
REAP AND SEW AZUL



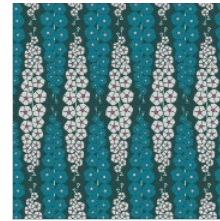
LPC-1421  
PIECED BUNCHES COOL



LPC-1420  
ANTHONEM SERENE



LPC-1428  
MANDALA DROPS MIDNIGHT

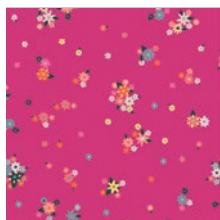


LPC-1427  
GLADIOLUMS INBLUEM

FUSED HUES



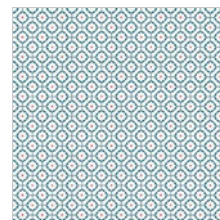
LPC-2426  
TOIARY FERN



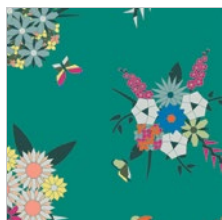
LPC-2425  
EFFLORESCENT FUSCHSIA



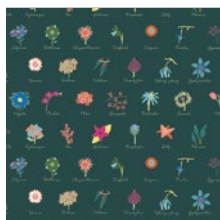
LPC-2423  
STRIPED FLOW RAINBOW



LPC-2422  
REAP AND SEW LIGHT



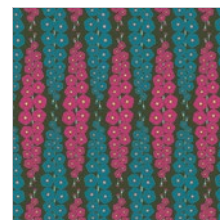
LPC-2421  
PIECED BUNCHES WILD



LPC-2420  
ANTHONEM FESTIVE



LPC-2428  
MANDALA DROPS IRIS



LPC-2427  
GLADIOLUMS PINKBLUEM



# Cubist Illusion

FINISHED SIZE | 22" x 14"

## FABRIC REQUIREMENTS

Fabric **A** PE-418 ¼ yd.  
 Fabric **B** LPC-2425 ¼ yd.  
 Fabric **C** LPC-2423 ⅓ yd.

BACKING FABRIC  
 LPC-2423 ½ yds. (Suggested)

## CUTTING DIRECTIONS

¼" seam allowances are included.  
 WOF means width of fabric.

Thirty two (32) Template 1 from fabrics **A**.

Thirty two (32) Template 1 from fabrics **B, C**

## CONSTRUCTION

Sew all rights sides together with ¼" seam allowance.

- Before assembling your pieces, make sure that you cut for fabric **C** in the following direction:



DIAGRAM 1

- Now, follow the diagram below for Fabric **A, B** and **C** assembly

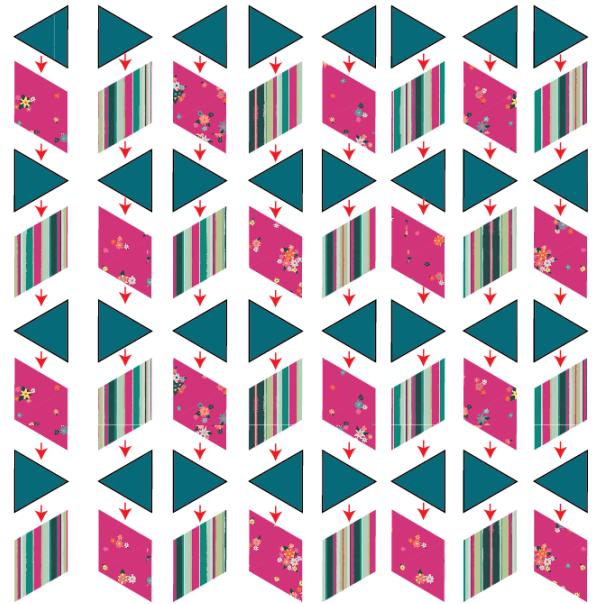


DIAGRAM 2

- Now, assemble each row as diagram below

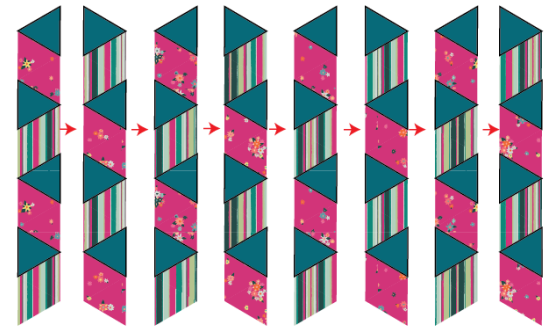


DIAGRAM 3

- Trim your assembled piece to an 20½" x 14½"



DIAGRAM 4

## CREATING THE BACK PILLOW

*Sew all rights sides together with 1/4" seam allowance.  
Press open.*

- To make an envelope back for your pillow take both 16" x 14 1/2" rectangles and fold one 16" side on each rectangle in 1/2" and press and then fold another 1/2" and press.
- Top stitch as close to the edge as possible.
- Place rectangles right side together on top of each other to the front of your pillow and stitch all the way around your pillow at 1/4" seam allowance.
- Clip corners at seam allowance and flip piece to the right side of the fabric.
- Fill pillow with a 20" x 14" pillow form and enjoy!



[artgalleryfabrics.com](http://artgalleryfabrics.com)

NOTE: While all possible care has been taken to ensure the accuracy of this pattern, We are not responsible for printing errors or the way in which individual work varies. Please read instructions carefully before starting the construction of this quilt. If desired, wash and iron your fabrics before starting to cut.

© 2018 Courtesy of Art Gallery Quilts LLC. All Rights Reserved.