

ASTRA



FUSIONS

by AGF

FREE PATTERN

XXXXXXXXXXXXXXXXXXXXXXXXXXXX



QUILT DESIGNED BY AGFstudio

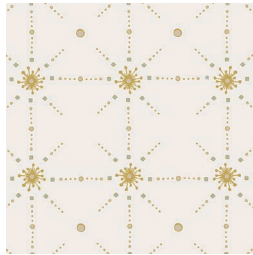


Sparkler FUSION

FABRICS DESIGNED BY AGFstudio



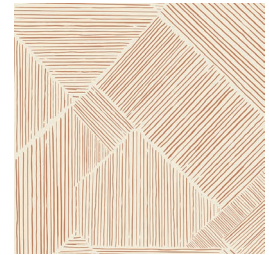
FUS-SK-1303
EVERLASTING BLOOMS SPARKLER



FUS-SK-1304
FROM WITHIN SPARKLER



FUS-SK-1308
STARBRIGHT SPARKLER



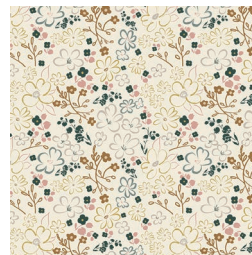
FUS-SK-1306
TROUVILLE ROUTES SPARKLER



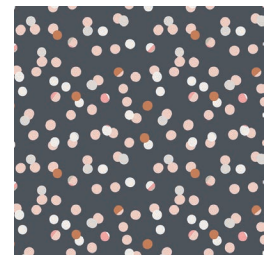
FUS-SK-1305
PINETREE SPARKLER



FUS-SK-1300
SPRINKLED PEONIES SPARKLER



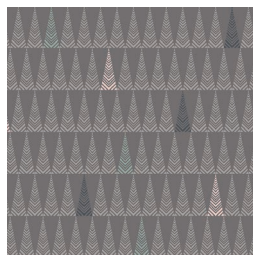
FUS-SK-1301
LITEN DITSY SPARKLER



FUS-SK-1307
CHADS SPARKLER



FUS-SK-1309
DOILAND GLOSS SPARKLER



FUS-SK-1302
TREE FARM SPARKLER





FINISHED SIZE | 83" x 96"

FABRIC REQUIREMENTS

Fabric A	FUS-SK-1304	7½ yd.
Fabric B	FUS-SK-1307	2½ yd.
Fabric C	FUS-SK-1308	1½ yd.
Fabric D	FUS-SK-1302	¾ yd.
Fabric E	PE-410	2¼ yd.
Fabric F	PE-472	¾ yd.
Fabric G	PE-458	¾ yd.
Fabric H	PE-407	¾ yd.
Fabric I	PE-446	¾ yd.

BACKING FABRIC

FUS-SK-1309 6 yds. *(Suggested)*

BINDING FABRIC

FUSK-SK-1308 (Fabric **C**) *(Included)*

CUTTING DIRECTIONS

¼" seam allowances are included.

- One hundred seventy one (171) WOF x 1½" strips from fabric **A**.
- Forty nine (49) WOF x 1½" strips from fabric **B**.
- Twenty five (25) WOF x 1½" strips from fabric **C**.
- Eight (8) WOF x 1½" strips from fabrics **D**, **F**, **G**, **H**, and **I**.
- Fifty (50) WOF x 1½" strips from fabric **E**.

CONSTRUCTION

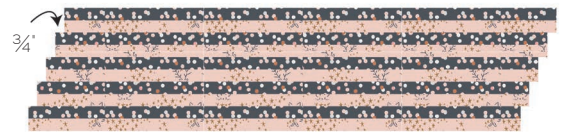
Sew all rights sides together with ¼" seam allowance.

- Make the following strip sets:
- **Strip Set 1** x 10:
- **E-A**- (3/4" from the edge) **E-A**- (3/4" from the edge) **E-A**- (3/4" from the edge) **E-A**- (3/4" from the edge) **E-A**
- **Strip Set 2** x 4:
- **B-C**- (3/4" from the edge) **B-C**- (3/4" from the edge) **B-C**- (3/4" from the edge) **B-C**
- **Strip Set 3** x 4:
- **A-I**- (3/4" from the edge) **A-I**- (3/4" from the edge) **A-H**- (3/4" from the edge) **A-H**- (3/4" from the edge) **A-F**
- **Strip Set 4** x 4:
- **D-A**- (3/4" from the edge) **D-A**- (3/4" from the edge) **G-A**- (3/4" from the edge) **G-A**- (3/4" from the edge) **F-A**
- For fabric placement and attachment follow Diagram 1:

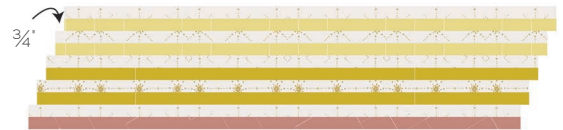
Strip Set 1 x 10



Strip Set 2 x 4



Strip Set 3 x 4



Strip Set 4 x 4

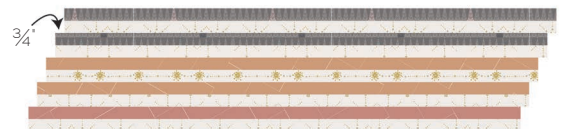
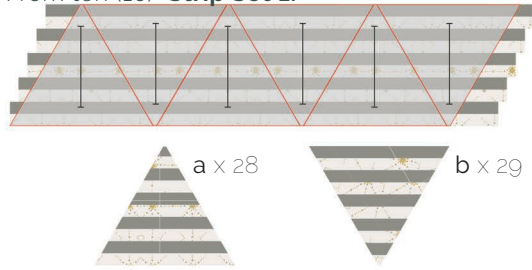


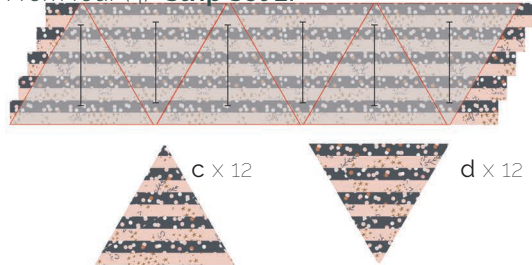
DIAGRAM 1

- Use the template and subcut all the strip sets following Diagram 2:

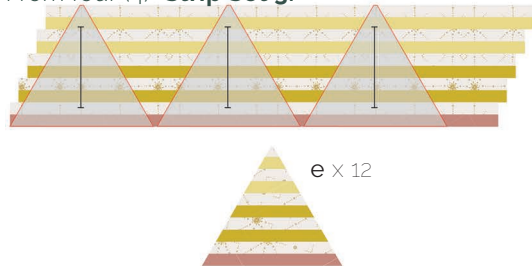
From ten (10) **Strip Set 1:**



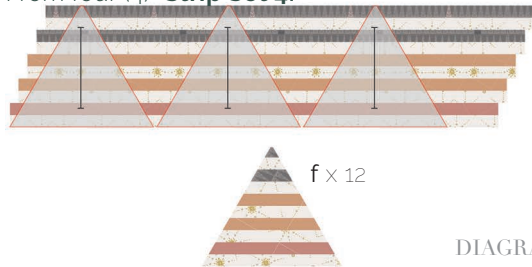
From four (4) **Strip Set 2:**



From four (4) **Strip Set 3:**



From four (4) **Strip Set 4:**



- Take eighty one (81) WOF x 1½" strips from fabric **A** and twenty four (24) WOF x 1½" strips from fabric **B**.
- Subcut the strips in half.
- Pair every template **a**, **b**, **e** and **f** with the two half strips from fabric **A**.
- Pair every template **c** and **d** with the two half strips from fabric **B**.
- Join one strip to one side of the template.
- Trim the triangle following the lines.

XX

- Join the other strip to the other side of the template.
- Trim the resulting triangle following the lines again.
- For fabric placement and attachment follow Diagram 3.

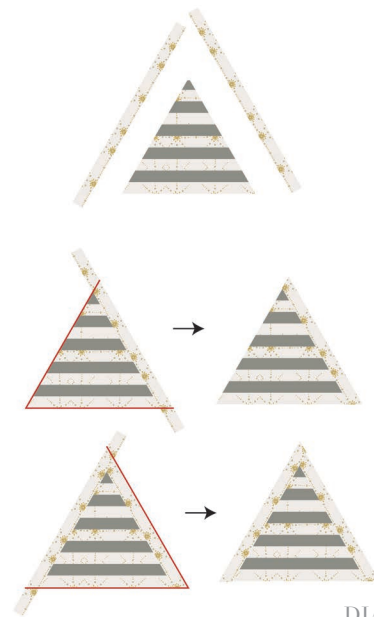


DIAGRAM 3

- As a result you will have the following triangles:

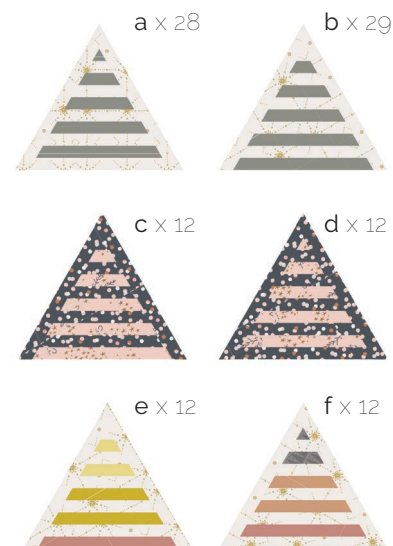


DIAGRAM 4

TOP ASSEMBLY

*1/4" seam allowances are included.
WOF means width of fabric.*

- Organize the triangles in the following rows:
- Row 1: $b > c > d > d > c > b > b > a > c > a > b > b$
- Row 2: $a > c > d > d > d > c > a > b > a > e > a > b > a$



- Trim your quilt top as follows:

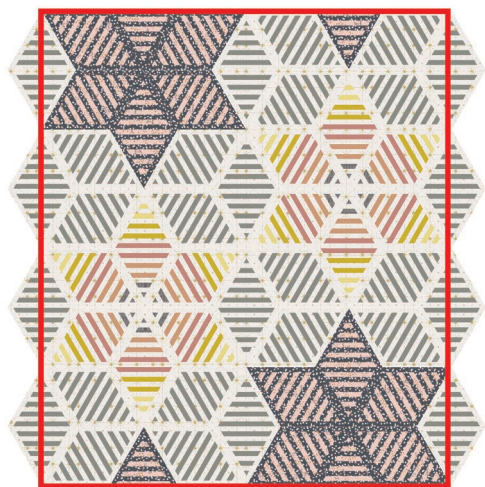


DIAGRAM 6

QUILT ASSEMBLY

Sew rights sides together.

- Place BACKING FABRIC on a large surface wrong side up. Stretch it with masking tape against that surface.
- Place BATTING on top of backing fabric.
- Place TOP on top of the batting with right side facing up. Smooth away wrinkles using your hands.
- Pin all layers together and baste with basting thread, using long stitches. You can also use safety pins to join the layers.
- Machine or hand quilt starting at the center and working towards the corners. Remember that quilting motifs are a matter of personal preference. Have fun choosing yours!
- After you finished, trim excess of any fabric or batting, squaring the quilt to proceed to bind it.

DIAGRAM B1



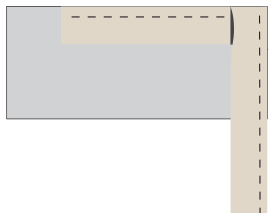
Stop stitching here

DIAGRAM B2



45°

DIAGRAM B3



fold

BINDING

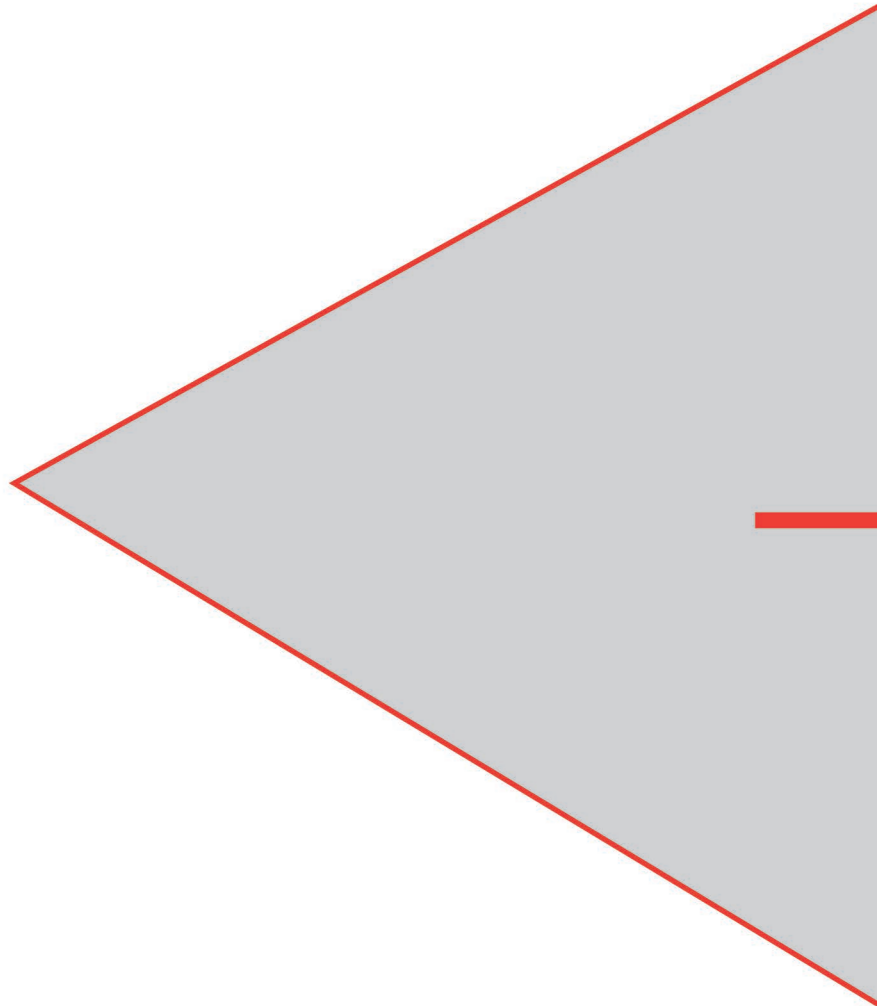
Sew rights sides together.

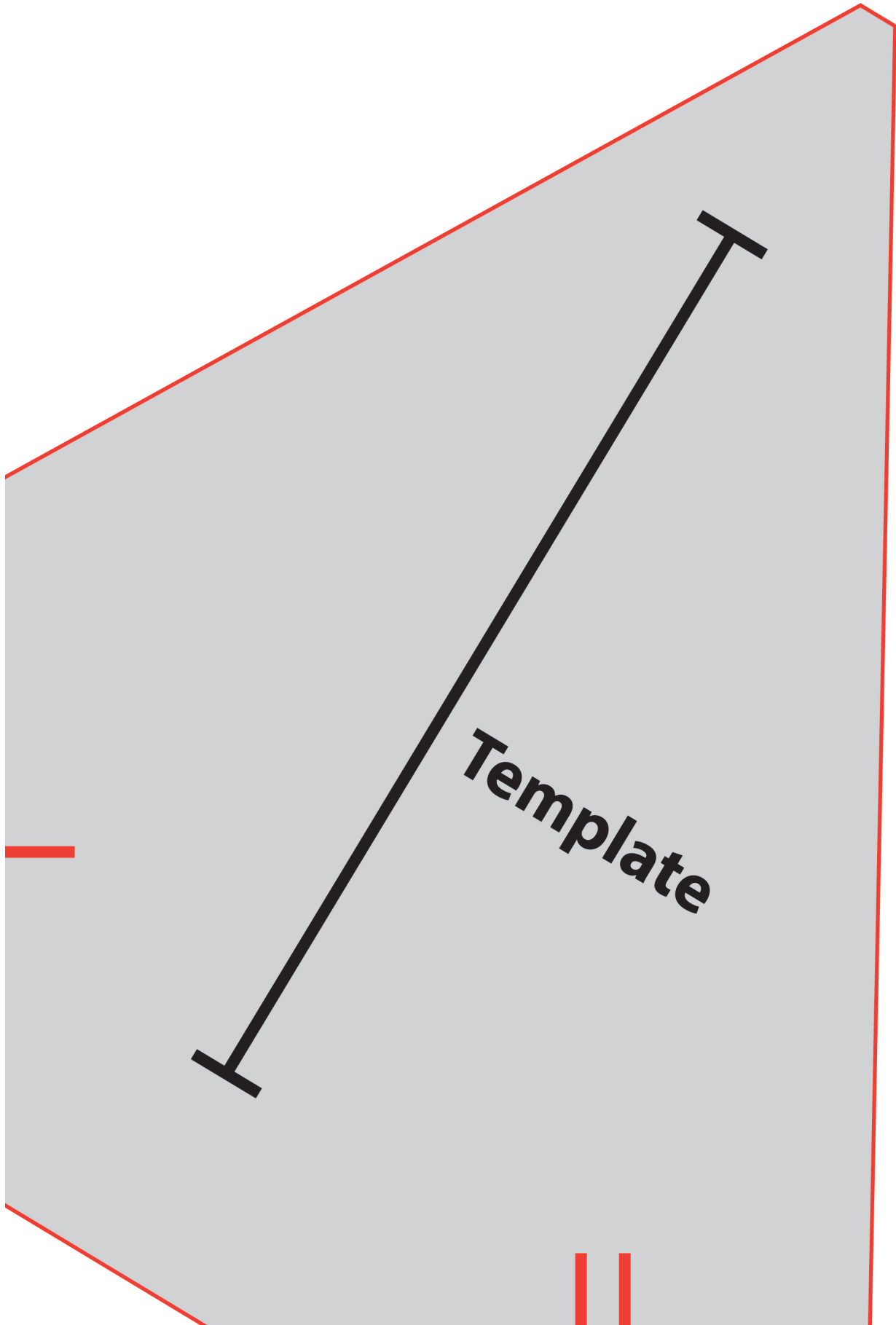
- Cut enough strips $1\frac{1}{2}$ ' wide by the width of the fabric **C** to make a final strip 368' long. Start sewing the binding strip in the middle of one of the sides of the quilt, placing the strip right side down and leaving an approximated 5' tail. Sew with $\frac{1}{4}$ ' seam allowance (using straight stitch), aligning the strip's raw edge with the quilt top's raw edge.
- Stop stitching $\frac{1}{4}$ ' before the edge of the quilt (**DIAGRAM B1**). Clip the threads. Remove the quilt from under the machine presser foot. Fold the strip in a motion of 45° and upward, pressing with your fingers (**DIAGRAM B2**). Hold this fold with your finger, bring the strip down in line with the next edge, making a horizontal fold that aligns with the top edge of the quilt (**DIAGRAM B3**). Start sewing at $\frac{1}{4}$ ' of the border, stitching all the layers. Do the same in the four corners of the quilt.
- Stop stitching before you reach the last 5 or 6 inches. Cut the threads and remove the quilt from under the machine presser foot. Lay the loose ends of the binding flat along the quilt edge, folding the ends back on themselves where they meet. Press them together to form a crease. Using this crease as the stitching line, sew the two open ends of the binding with right sides together (you can help yourself marking with a pencil if the crease is difficult to see).
- Trim seam to $\frac{1}{4}$ ' and press open. Complete the sewing. Turn binding to back of the quilt, turn raw edge inside and stitch by hand using blind stitch.



artgalleryfabrics.com

NOTE: While all possible care has been taken to ensure the accuracy of this pattern, We are not responsible for printing errors or the way in which individual work varies. Please read instructions carefully before starting the construction of this quilt. If desired, wash and iron your fabrics before starting to cut.





x x x x x x x x x x x x x x x x x x x

