

X
X
X
X
X
X
X
X
X
X
X
X



× × × × × × × × × × × × × × × × × × × ×



ZIG ZAG

countful

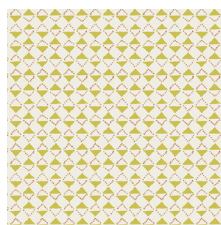
FABRICS DESIGNED BY SHARON HOLLAND



PLANT



BON-38500
PERENNIAL OPTIMISM



BON-38501
GATHER MELLOW



BON-38502
GRAZING SIENNA



BON-38503
HAYMOW EARLY



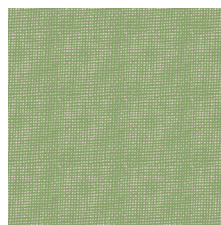
BON-38505
VINE FLORET



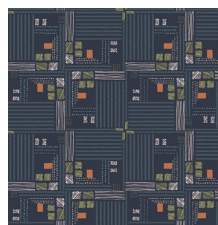
BON-38506
PRAIRIE MAZE



BON-38508
SCENIC BLUE SKY



BON-38509
PLAIN WEAVE THATCH



BON-38510
TARTAN FIELD MIDNIGHT

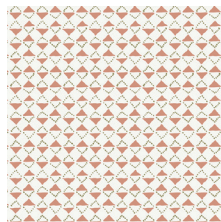


BON-38511
VINE BRAID

HARVEST



BON-48500
PERENNIAL RENEWAL



BON-48501
GATHER RUSTIC



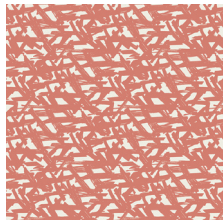
BON-48502
GRAZING BRINDLE



BON-48503
HAYMOW STACK



BON-48504
ABUNDANT GALVANIZE



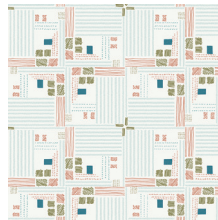
BON-48506
PRAIRIE CRIMSON



BON-48507
ARBORESCENT SEASONS



BON-48509
PLAIN WEAVE FLAX



BON-48510
TARTAN FIELD SNOW



BON-48511
VINE UMBRA



FEEL THE DIFFERENCE © 2017 Courtesy of Art Gallery Quilts LLC. All Rights Reserved.



FINISHED SIZE | 20" x 20"

FABRIC REQUIREMENTS

Fabric **A** BON-48502 $\frac{5}{8}$ yd.
 Fabric **B** BON-38502 $\frac{1}{2}$ yd.
 Fabric **C** DEN-S-2008 $1\frac{5}{8}$ yd.

BACK OF PILLOW FABRIC
 DEN-S-2008 (Included)

CUTTING INSTRUCTIONS

WOF means width of fabric

- Eight (2) $2\frac{1}{2}$ " x WOF strips from fabric **A**
- Six (6) $2\frac{1}{2}$ " x WOF strips from fabric **B**
- Fourteen (14) $2\frac{1}{2}$ " x WOF strips from fabric **C**
- Two (2) 21 " x 14 " rectangles from fabric **C**

CONSTRUCTION

Sew all rights sides together with $\frac{1}{4}$ " seam allowance.

- Make four (4) blocks joining the strips as follows:
 - **Block 1** make 2
 - **A > C > A > C > A > C > A**
 - **Block 2** make 2
 - **C > B > C > B > C > B > C**
- Subcut strips $2\frac{1}{2}$ " strips at a 60° angle from the sides.
- Six (6) $2\frac{1}{2}$ " strips from **Block 1**.
- Three (3) from the left side, and three (3) from the other side.
- Four (4) $2\frac{1}{2}$ " strips from **Block 2**.
- Two (2) from the left side, and two (2) from the other side.
- Follow Diagram 1 for fabric placement and cutting.

XX

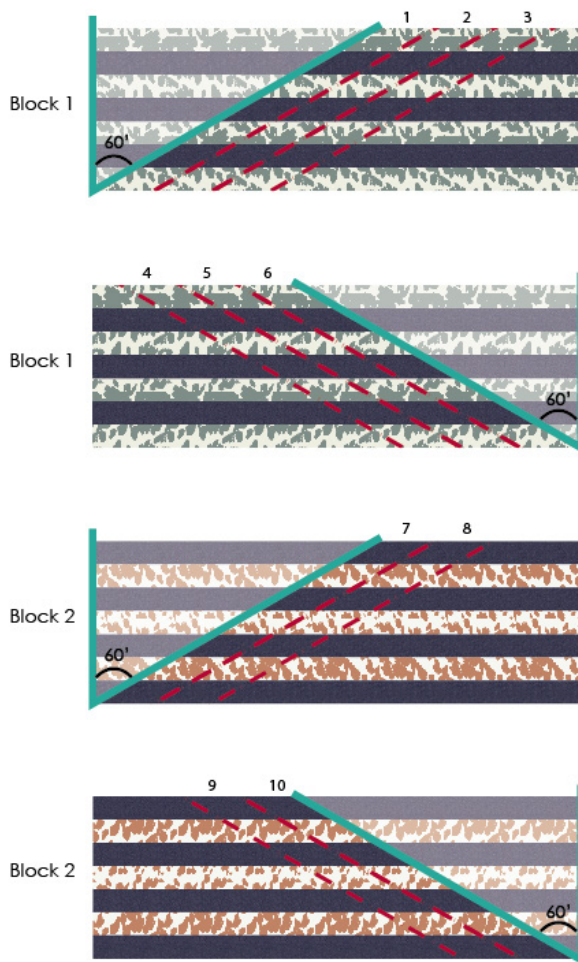


DIAGRAM 1

- Join the resulting 10 strips.
- Make sure the points match.
- Follow Diagram 2 from fabric placement and attachment.

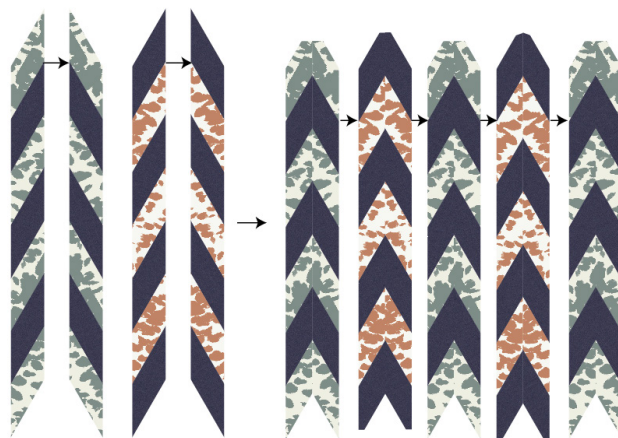


DIAGRAM 2

- Trim the final piece to a 20 ½" x 20 ½" square..

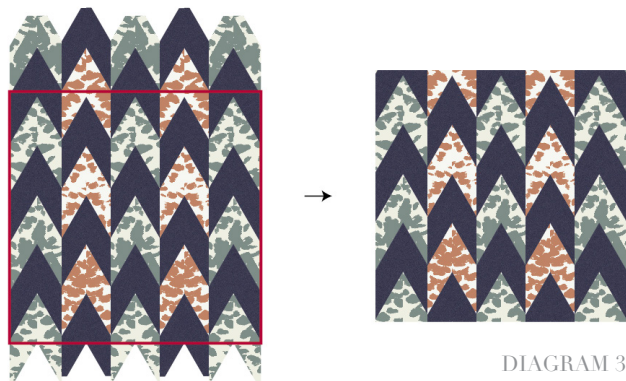


DIAGRAM 3

PILLOW ASSEMBLY

Sew rights sides together.

- Place BACKING FABRIC on a large surface wrong side up. Stretch it with masking tape against that surface.
- Place BATTING on top of backing fabric.
- Place TOP on top of the batting with right side facing up. Smooth away wrinkles using your hands.
- Pin all layers together and baste with basting thread, using long stitches. You can also use safety pins to join the layers.
- Machine or hand quilt starting at the center and working towards the corners. Remember that quilting motifs are a matter of personal preference. Have fun choosing yours!
- After you finished, trim excess of any fabric or batting, squaring the pillow.

CREATING THE BACK PILLOW

- To make a envelope back for your pillow take the two (2) 21" x 14" rectangles from fabric C and fold one 14" side on each rectangle in 1/2" and press and then fold another 1/2" and press.
- Topstitch as close to the edge as possible.
- Place rectangles right side together on top of each other to the front of your pillow and stitch all the way around your pillow at ¼" seam allowance.
- Clip corners at seam allowance and flip piece to the right side of the fabric.
- Fill pillow with a 20" x 20" pillow form and enjoy!

XXXXXXXXXXXXXXXXXXXXXXXXXXXXXXXXXXXX



artgalleryfabrics.com

NOTE: While all possible care has been taken to ensure the accuracy of this pattern, We are not responsible for printing errors or the way in which individual work varies. Please read instructions carefully before starting the construction of this quilt. If desired, wash and iron your fabrics before starting to cut.

© 2017 Courtesy of Art Gallery Quilts LLC. All Rights Reserved.