



Barcelona

QUILT DESIGNED BY AGF STUDIO

Mediterraneo

FABRICS DESIGNED BY KATARINA ROCCELLA



MADDALENA GETAWAY



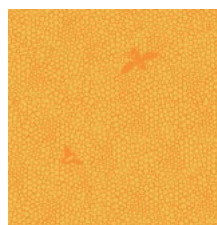
MED-22600
LANTANA TEAL



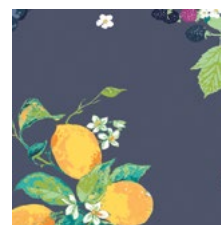
MED-22601
ZANAFI AQUA



MED-22602
OLIVE FOLIAGE



MED-22604
HONEYCOMB MIELE



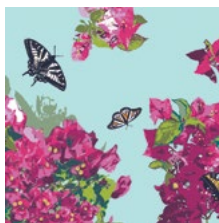
MED-22605
FRUTTERIA BLEU



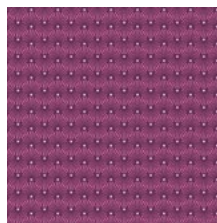
MED-22606
COASTAL GARDEN CIELO



MED-22607
HERCULANEUM



MED-22609
BOUGAINVILLUSH

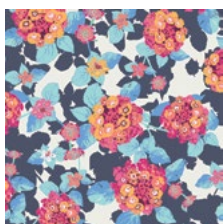


MED-22611
SHELL BLAZE AUBERGINE



MED-22612
DJULOV DISTRESSED

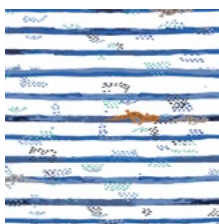
MARRAKESH ESCAPE



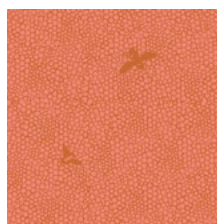
MED-32600
LANTANA COBALT



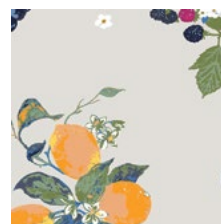
MED-32601
ZANAFI AZURE



MED-32603
GECKO TRAILS



MED-32604
HONEYCOMB NECTAR



MED-32605
FRUTTERIA SAND



MED-32606
COASTAL GARDEN VIOLET



MED-32608
NUT MEDLEY



MED-32610
CARTOGAPHE



MED-32611
SHELL BLAZE NIGHT



MED-32612
DJULOV PARCHMENT



FEEL THE DIFFERENCE © 2018 Courtesy of Art Gallery Quilts LLC. All Rights Reserved.



FINISHED SIZE | 8 x 8" & 10 x 10"

FABRIC REQUIREMENTS

Fabric A	MED-32611	FE.
Fabric B	MED-22606	FE.
Fabric C	MED-33603	FQ.
Fabric D	MED-22604	3/4yd.
Fabric E	MED-32606	FQ.
Fabric F	PE-408	FQ.
Fabric G	MED-32601	FQ.
Fabric H	MED-32418	FE.

BACKING FABRIC

Pot holder #1

Fabric **E** MED-32606-F

Pot Holder #2

Fabric **D** MED-22604

(included)

BINDING FABRIC

Pot holder # 1

Fabric **E** FUS-F-1007

Pot holder # 2

Fabric **D** MED-22604 (suggested)

CUTTING DIRECTIONS

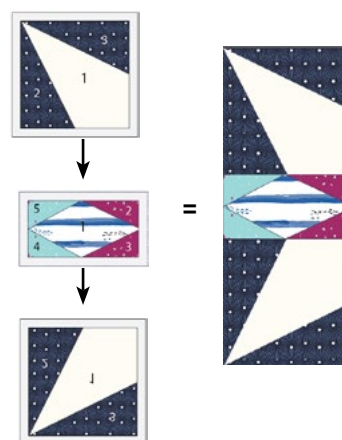
1/4" seam allowances are included.
WOF means width of fabric.

- Fabric requirements and cutting directions include all blocks.
- Cut eight (8) 3 x 5" strips from fabric **A**
- Cut eight (8) 3 x 2" strips from fabric **B**
- Cut four (4) 4" squares from fabric **C**
- Cut four (4) 3 x 4" from fabric **C**
- Cut eight (8) 5" squares from fabric **D**
- Cut one (1) from templates **1 & 2** from fabric **D**
- Cut sixteen (16) 3" squares from fabric **E**
- Cut four (4) 4 1/2" squares from fabric **F**
- Cut four (4) 5" squares from fabric **G**
- Cut eight (8) 3" squares from fabric **H**

CONSTRUCTION

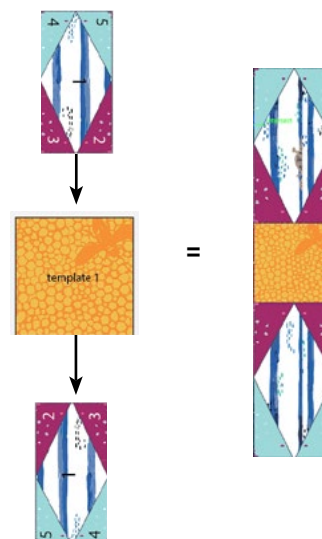
Sew all rights sides together with 1/4" seam allowance.

- Use the paper piecing templates found at the end of these instructions to sew all of the blocks.
- If you are new to paper piecing check out this video tutorial on how to paper piece:
- <http://www.agfblog.com/2017/08/paper-piecing-tips-how-to-make-a-crossed-ca-noes-block-.html>
- The block is divided into nine (9) different pieces and two sections.
- Tip: it is better if you do all the paper piecing first and after attach all pieces together.
- Refer to the diagram below for correct fabric attachment.
- **Section 1:**
- Use fabrics **A, B, C, E & F.**
- Create the mirrored version of section **1**

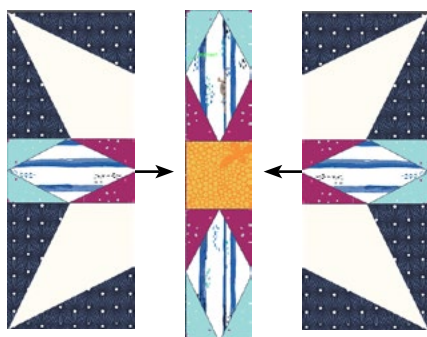


Section 2:

- Use fabrics **B, C, D & E.**



- Attach to create section **1** to section **2**



- You are done with your first pot holder!



- Follow the same steps to create your second pot holder. Fabrics are included above!

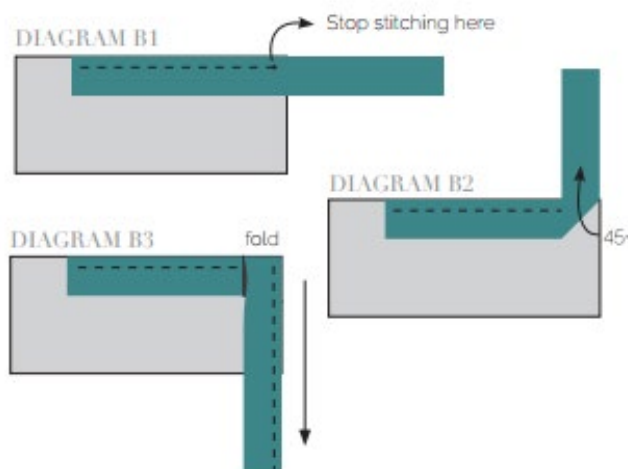
QUILT ASSEMBLY

Sew rights sides together.

- Place BACKING FABRIC on a large surface wrong-side up. Stretch it with masking tape against that surface.
- Place BATTING on top of backing fabric.
- Place TOP on top of the batting with right side facing up. Smooth away wrinkles using your hands.
- Pin all layers together and baste with basting thread, using long stitches. You can also use safety pins to join the layers. Machine or hand quilt starting at the center and working towards the corners. Remember that quilting motifs are a matter of personal preference. Have fun choosing yours!

BINDING

- Cut 2 strips from fabric **D & E** 1½" wide by the width of the fabric to make a final strip of 42" in (fabric **E** for pot holder #1) and a final strip of 50" in (fabric **D** for pot holder #2) long. Start sewing the binding strip in the middle of one of the sides of the pot holder, placing the strip right side down and leaving an approximated 5" tail. Sew with ¼" seam allowance (using straight stitch), aligning the strip's raw edge with the quilt top's raw edge.
- Stop stitching ¼" before the edge of the pot holder (DIAGRAM B 1). Clip the threads. Remove the quilt from under the machine presser foot. Fold the strip in a motion of 45° and upward, pressing with your fingers (DIAGRAM B2). Hold this fold with your finger, bring the strip down in line with the next edge, making a horizontal fold that aligns with the top edge of the pot holder (DIAGRAM B3). Start sewing at ¼" of the border, stitching all the layers. Do the same in the four corners of the pot holder.
- Stop stitching before you reach the last 5 or 6 inches. Cut the threads and remove the pot holder from under the machine presser foot. Lay the loose ends of the binding flat along the edge, folding the ends back on themselves where they meet. Press them together to form a crease. Using this crease as the stitching line, sew the two open ends of the binding with right sides together (you can help yourself marking with a pencil if the crease is difficult to see).
- Trim seam to ¼" and press open. Complete the sewing. Turn binding to back of the pot holder, turn raw edge inside and stitch by hand using blind stitch.





artgalleryfabrics.com

NOTE: While all possible care has been taken to ensure the accuracy of this pattern, We are not responsible for printing errors or the way in which individual work varies.

Please read instructions carefully before starting the construction of this quilt. If desired, wash and iron your fabrics before starting to cut.

