

A close-up photograph of a woman's neck and shoulder area. She is wearing a blue and white patterned necklace with a large, ornate pendant. The pendant features a blue and white geometric pattern. She is also wearing a matching earring with a blue and white patterned design. The necklace has a blue cord and a large, ornate pendant. The earring is a long, vertical design with a blue and white patterned top and a blue tassel. The woman has dark hair and is wearing a white top.

Altea



Mediterraneo

FABRICS DESIGNED BY KATARINA ROCCELLA

MADDALENA GETAWAY



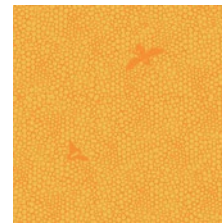
MED-22600
LANTANA TEAL



MED-22601
ZANAFI AQUA



MED-22602
OLIVE FOLIAGE



MED-22604
HONEYCOMB MIELE



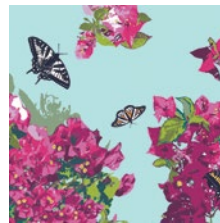
MED-22605
FRUTTERIA BLEU



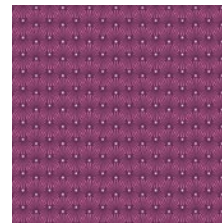
MED-22606
COASTAL GARDEN CIELO



MED-22607
HERCULANEUM



MED-22609
BOUGAINVILLUSH



MED-22611
SHELL BLAZE AUBERGINE



MED-22612
DJULOV DISTRESSED

MARRAKESH ESCAPE



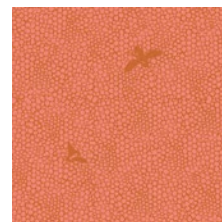
MED-32600
LANTANA COBALT



MED-32601
ZANAFI AZURE



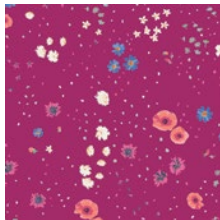
MED-32603
GECKO TRAILS



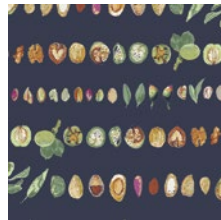
MED-32604
HONEYCOMB NECTAR



MED-32605
FRUTTERIA SAND



MED-32606
COASTAL GARDEN VIOLET



MED-32608
NUT MEDLEY



MED-32610
CARTOGAPHE



MED-32611
SHELL BLAZE NIGHT



MED-32612
DJULOV PARCHMENT



FEEL THE DIFFERENCE © 2018 Courtesy of Art Gallery Quilts LLC. All Rights Reserved.



FINISHED SIZE | One size

FABRIC REQUIREMENTS

Fabric A	K-32611	FQ
Fabric B	MED-22607	F8
Fabric C	PE-454	F8
Fabric D	MED-32611	F8
Fabric E	Kraftex	

Additional Materials

- Steam-a-Seam double side fusible tape
- Jewelry wire
- E-6000 glue
- Cotton clothes cord
- Eyepins
- Jump rings
- Lobster clasp
- 5mm pewter end caps
- Jewelry chain
- 2-in-1 jewelry plier/cutter
- Pre made tassels or loops thread (craft cord)

CUTTING DIRECTIONS

*1/4" seam allowances are included.
WOF means width of fabric.*

- Five (5) Template 1 from Kraftex material
- Two (2) Template 2 from Kraftex material
- Two (2) Template 3 from Kraftex material

CONSTRUCTION

Sew all rights sides together with 1/4" seam allowance.

- With your Kraftex Template 2 cut outs, place steam-a-seam double side fusible tape.
- Steam and remove the plastic paper
- Place Fabric **C** and steam again
- Trim around the piece and repeat the same process for the other side and for the other piece with Fabric **C**.

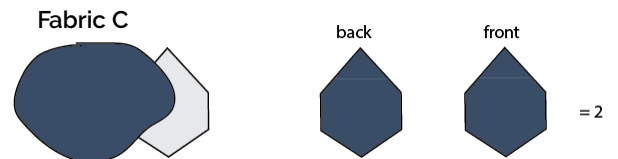


DIAGRAM 1

- For Templates 1 Kraftex cut outs, repeat the same process but for one side use Fabric **B**

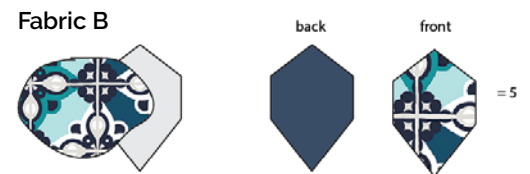


DIAGRAM 2

- For Templates 3 repeat the same process as Template 2 and 1 but use Fabric **D** on one side.

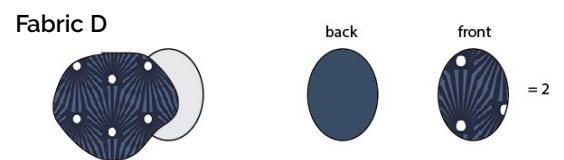


DIAGRAM 3

Creating your Earrings

- For the earrings Template 1 and 3 measure the distance on where you need to insert a thick paper clip needle in order to create your holes at the top and bottom



DIAGRAM 4

- Take your Template 3 piece and insert a metal ring with your jewelry plier and attach your Template 1 piece
- Close your metal ring.
- For the bottom hole, insert another metal ring and attach your color preferred tassel and close your metal ring.
- Insert a metal ring on the top part of the Template 1 and attach an earring hook.
- Close your metal ring and now you have one earring ready, just repeat the same process for the other earring.

Creating your necklace

- Start with cotton clothes cord. Measure the length that you want the piece to be.
- This necklace measures 19"
- Cut a long and narrow strip of fabric A (4½" x 25")
- Fold the long piece of fabric in half lengthwise and serge the long edges together, right sides facing.

- Turn the tube inside out once the sewing is done with a loop turner or a paper clip.
- Take your cotton clothes line and with your loop turner or paper clip insert the cotton cloth line into your fabric tube.
- Trim off the frayed ends of your cord with scissors
- Glue the end caps to the ends of the cord and insert it at the end of the cord. Let dry for 1-2 hours.
- Using jump rings add a clasp to one end and an extension chain to the other.

End caps

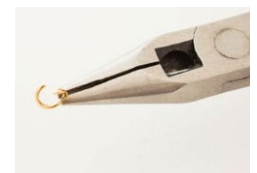
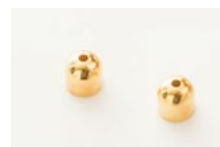


DIAGRAM 5

- Now, to attach the Template pieces, measure the distance on where you need to insert a thick paper clip needle in order to create your hole. It needs to be close to the edge but not too close that your point can get damaged.

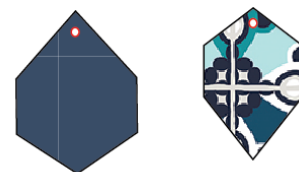


DIAGRAM 6

Take your fabric tube and calculate your center in order to attach your middle piece

That will be your guide for the other pieces.

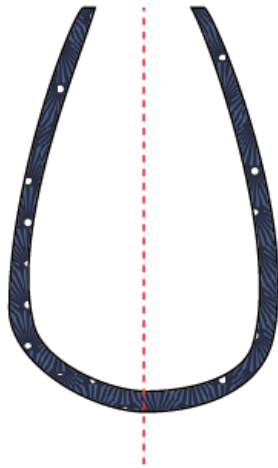


DIAGRAM 7

Insert a metal ring through the fabric tube and take your Template 1 piece and insert it.

Close your metal ring



DIAGRAM 8

Now, measure about 1" from each side of the first piece attached, and insert again another metal ring through your necklace cord.

Insert on both sides of the first piece your two (2) Template 2 pieces.



DIAGRAM 9

Measure again about 1" distance from each piece and repeat the same process by attaching your last 2 pieces from Template 1.

Now, you have your beautiful set of earrings with matching necklace for your mediterranean adventure!



XXXXXXXXXXXXXXXXXXXXXXXXXXXXXXXXXXXX

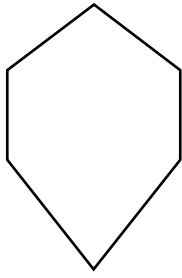
*Congratulations
& enjoy*

XXXXXXXXXXXXXXXXXXXXXXXXXXXXXXXXXXXX

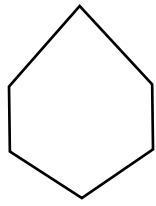


artgalleryfabrics.com

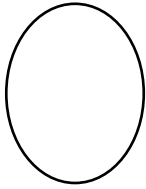
NOTE: While all possible care has been taken to ensure the accuracy of this pattern, We are not responsible for printing errors or the way in which individual work varies. Please read instructions carefully before starting the construction of this quilt. If desired, wash and iron your fabrics before starting to cut.



Template 1



Template 2



Template 3