

## A cozy bedroom interior featuring a bed with a patchwork quilt. The quilt is composed of various patterns including stripes, floral, and solid colors in shades of pink, green, and yellow. The bed is set against a rustic headboard made of horizontal wooden planks. Several pillows are on the bed, including a large white one, a smaller green one, and a red floral one. To the left of the bed, there is a small table with a vase of pink flowers and a glass bottle. To the right, a small white table holds a vase of white flowers and a small potted plant. The overall atmosphere is warm and inviting.

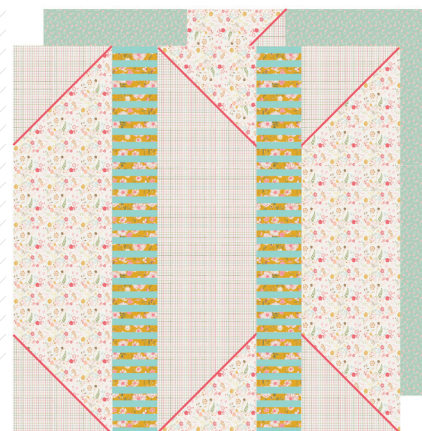
XXXXXXXXXXXXXXXXXXXX



# Perennial DUVET COVER

DESIGNED BY AGF STUDIO

AGFstudio

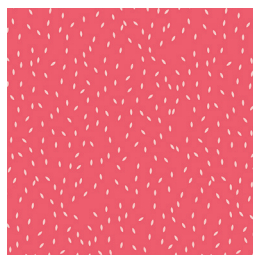


## PRINTEMPS FUSION

FABRICS DESIGNED BY AGF STUDIO



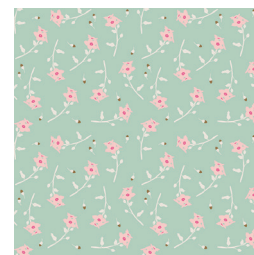
**FUS-P-1200**  
PAINTED DESERT PRINTEMPS



**FUS-P-1201**  
SCATTER PRINTEMPS



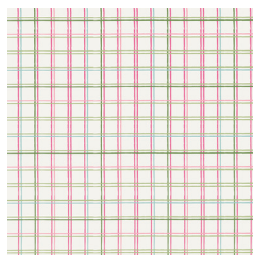
**FUS-P-1202**  
LUMINOUS FIELD PRINTEMPS



**FUS-P-1203**  
FRESHLY PICKED PRINTEMPS



**FUS-P-1204**  
FIETSEN PRINTEMPS



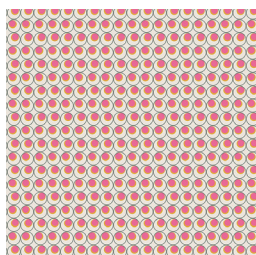
**FUS-P-1205**  
PLAID BEAT PRINTEMPS



**FUS-P-1206**  
LIBRARY GARDENS PRINTEMPS



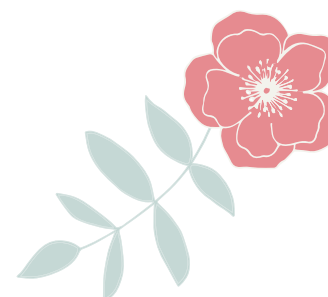
**FUS-P-1207**  
PERENNIAL PRINTEMPS



**FUS-P-1208**  
ROUNDED SEEDS PRINTEMPS



**FUS-P-1209**  
MAGNOLIA PRINTEMPS



FEEL THE DIFFERENCE © 2017 Courtesy of Art Gallery Quilts LLC. All Rights Reserved.

FINISHED SIZE | 86" x 86"

## FABRIC REQUIREMENTS

Fabric <b>A</b>	FUS-P-1202	2½ yd.
Fabric <b>B</b>	FUS-P-1205	2½ yd.
Fabric <b>A</b>	FUS-P-1207	4 yd.
Fabric <b>B</b>	FUS-P-1203	7⁄8 yd.
Fabric <b>A</b>	PE-424	1¼ yd.

## CUTTING DIRECTIONS

*1/4" seam allowances are included.  
WOF means width of fabric.*

- Two (2) 22½" x 88" from fabrics **A** and **B**.
- Seven (7) WOF x 1½" from fabric **C**.
- Fourteen (15) WOF x 2" from fabric **C**.
- Two (2) 32½" x 86½" from fabric **D**.
- Fifteen (15) WOF x 2" from fabric **E**.
- Seven (7) WOF x 1½" from fabric **E**.

## CONSTRUCTION

*Sew all wrong sides together with ¼" seam allowance.*

- Take fifteen (15) WOF x 2" from fabrics **C** and **E** and join them by the WOF side.
- Subcut the strip set in 10½" sub strips:

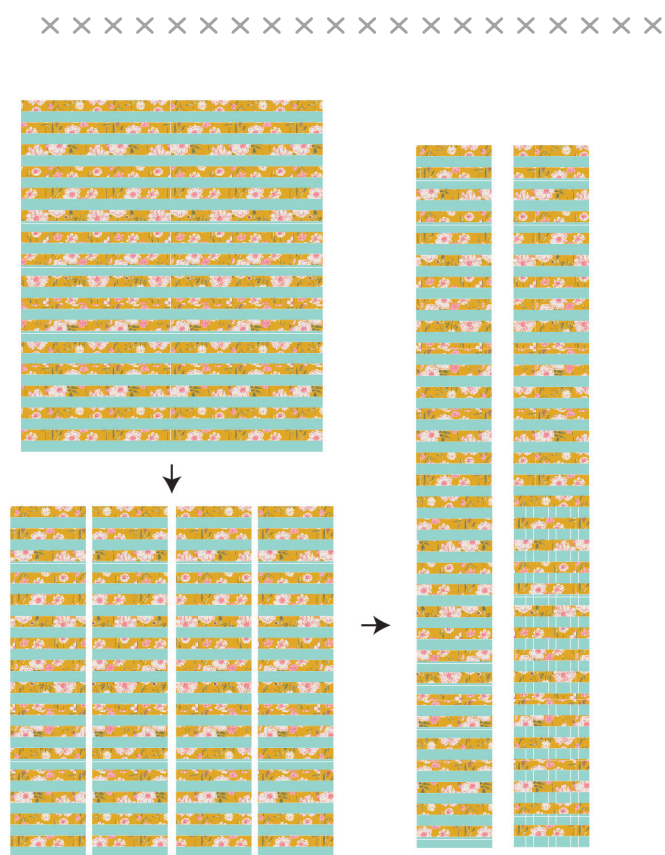


DIAGRAM 1

- Trim the corner triangles from fabrics **A** and **B**, and join them to the opposite fabric making sure they are wrong side to wrong side.
- Take a strip of chenille or a fuchsia fabric and saw it on top of the seams.

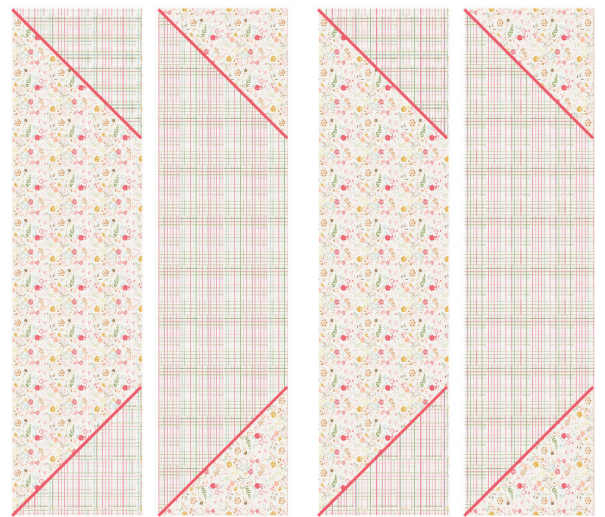


DIAGRAM 2



## ASSEMBLY

*¼" seam allowances are included.  
WOF means width of fabric.*

- Take two (2) 32½" x 86½" rectangles from fabric **D**.
- Join the pieces following the diagram and sew the seam placing the pieces wrong sides together.

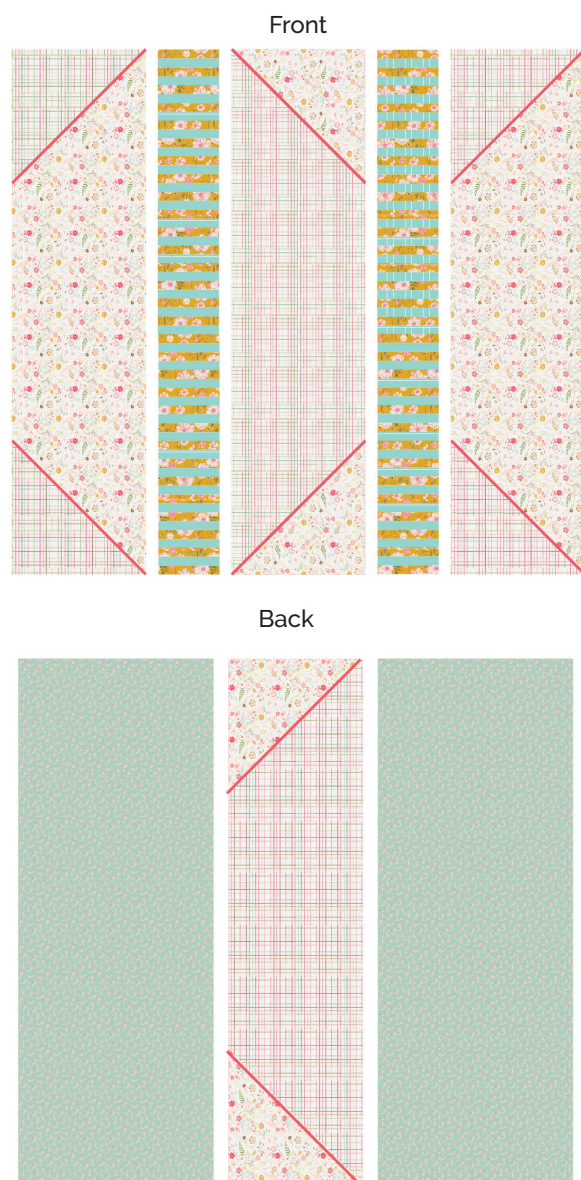


DIAGRAM 3

- Joint the pieces around the sides and the top.
- Make button holes in the bottom and hand saw buttons to be able to insert and remove your duvet.



[artgalleryfabrics.com](http://artgalleryfabrics.com)

NOTE: While all possible care has been taken to ensure the accuracy of this pattern, We are not responsible for printing errors or the way in which individual work varies.

Please read instructions carefully before starting the construction of this quilt. If desired, wash and iron your fabrics before starting to cut.

© 2018 Courtesy of Art Gallery Quilts LLC. All Rights Reserved.