

FLORAISON



FLORAISON *bari J.*

QUILT DESIGNED BY BLAIR STOCKER



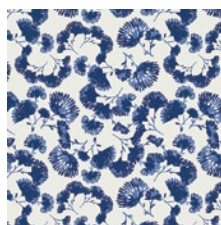
Indigo & Aster

FABRICS DESIGNED BY BARI J.

INDIGO'S ILLUSION



IDA-14800
LA FLORAISON LIT



IDA-14801
FOLIAGE ESCAPE LAPIS



IDA-14802
GRAND OPULENCE BLEU



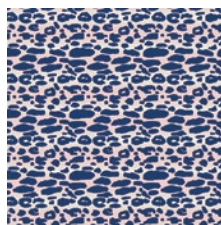
IDA-14803
BONHEUR FRESH



IDA-14804
GOOD FORTUNES ROYAL



IDA-14805
TREASURE SPLENDOUR TANG



IDA-14806
ANIMALIA EXOTICA OASIS



IDA-14807
COURBÉ IKAT SKY



IDA-14808
MAXIMAL BRODERIE COOL



IDA-14809
LUSH BOUQUET

ASTER'S ALLUSION



IDA-24800
LA FLORAISON DIM



IDA-24801
FOLIAGE ESCAPE VERT



IDA-24802
GRAND OPULENCE



IDA-24803
BONHEUR SWEET



IDA-24804
GOOD FORTUNES CERISE



IDA-24805
TREASURE SPLENDOUR ACID



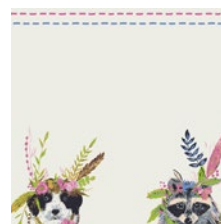
IDA-24806
ANIMALIA EXOTICA SAND



IDA-24807
COURBÉ IKAT ROSE



IDA-24808
MAXIMAL BRODERIE WARM



IDA-24810
RADIANT MENAGERIE



FEEL THE DIFFERENCE © 2018 Courtesy of Art Gallery Quilts LLC. All Rights Reserved.



FINISHED SIZE | 50" x 50"

FABRIC REQUIREMENTS

Fabric A	IDA-24810	1 ½ yd.
Fabric B	IDA-14807	1 ½ yd.
Fabric C	IDA-24800	¾ yd.
Fabric D	IDA-14801	¾ yd.
Fabric E	IDA-14809	¼ yd.

BACKING FABRIC

IDA-14800 3 ½ yds. (*Suggested*)

BINDING FABRIC

IDA-14809 (Fabric **E**) (*included*)

CUTTING DIRECTIONS

*¼" seam allowances are included.
WOF means width of fabric.*

Fabric **A**:

Fussy cut (16) sixteen animal portraits from this print. Cut them as 4 ½" square, with the animal roughly centered in the square.

Seven (6) 3 ½" x WOF strips

Fabric **B**:

Eight (8) 1" x WOF strips

Eight (8) 1 ¼" x WOF strips

Nine (9) 1 ½" x WOF strips

Eleven (11) 1 ¾" x WOF strips

Fabric **C & D**:

Two (2) 1" x WOF strips

Two (2) 1 ¼" x WOF strips

Four (4) 1 ½" x WOF strips

Eight (8) 7" squares

CONSTRUCTION

Sew all right sides together with ¼" seam allowance.

- This is a basic pineapple block with one fabric going around the center square (fabric B) and two fabrics creating contrast corners. By having the contrast corners meet they will form a secondary pattern of blocks.

Pineapple Block A

(Make 8)

- Subcut two 1" x 4 ½" strips of fabric B and add to the top of the center square (fabric A). Stitch, press seam allowances toward the strip.

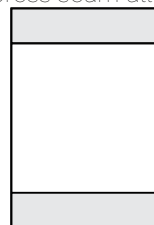


DIAGRAM 1

- Cut two strips of Fabric B (from 1" wide strips) roughly the length of the sides of the unit (cut a little bit longer, then trim down after sewing). Stitch to the sides of the unit, press seam allowances toward the strips (see below).

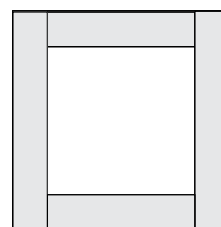


DIAGRAM 2

- Trim each of the four corners of this unit to create an octagon shape. To do this, align the 45° line on your quilting ruler with the edge of the unit at each corner. (see diagram 3)
- Make sure to leave ¼" of fabric B at each corner to allow for seam allowance when sewing to fabric C/D.

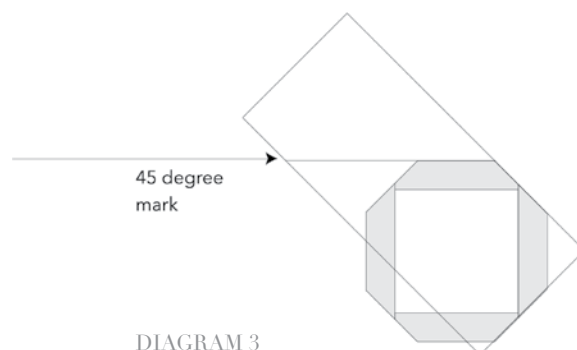


DIAGRAM 3

- Roughly cut (2) two strips of Fabric C and (2) two strips of Fabric D (from your 1' x WOF strips) a bit longer than the length of the trimmed sides of the unit (see below). Pin Fabric C strips to the Top Left & Bottom Right corners. Pin Fabric D to the Top Right & Bottom Left corners. Stitch strips the sides of the unit, press seam allowances toward the strips.

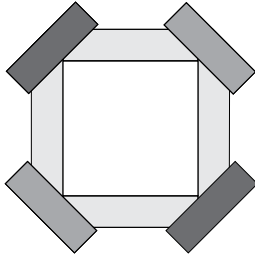


DIAGRAM 4

- Trim the strips to square up.

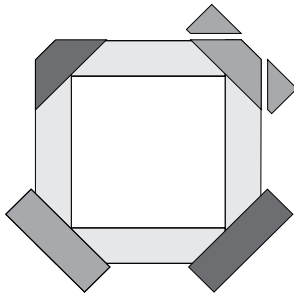


DIAGRAM 5

- For the construction of round 2 you will subcut your strips from the 1 1/4' x WOF strips. Sew fabric B strips to all four sides of the octagon and trim the corners of the unit to keep the octagon shape.

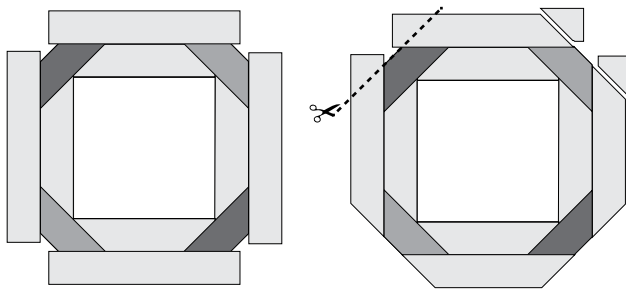


DIAGRAM 6

- Add strips of Fabric C and Fabric D to the same corners as in round 1. You will roughly subcut the strips to size from the 1 1/4' wide strips.

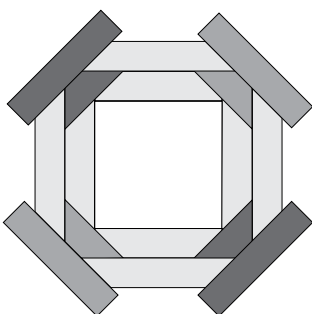


DIAGRAM 7

- Use the 1 1/2' wide strips for round 3. Continue adding Fabric B strips and Fabric C & D strips in the same manner.
- For Round 4 use the 1 3/4' wide Fabric B strips and attach and trim in the same manner as previous rounds.
- For the corners in Round 4 take your 7' squares in Fabrics C & D and cut across both diagonals to get 4 triangles per square. Align the triangles to the corners and sew. Press open and trim to a 11 1/2' block. (finished size will be 11')

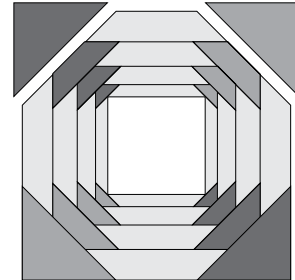


DIAGRAM 8

Pineapple Block B (Make 8)

- Block B follows the same steps as Block A, with the corners fabrics reversed. Sew Fabric D strips to the Top Left & Bottom Right corners. Sew Fabric C to the Top Right & Bottom Left corners.

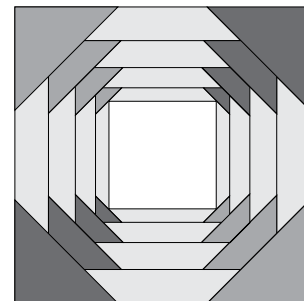


DIAGRAM 9

ASSEMBLE QUILT TOP

- Now assemble your blocks into four rows, alternating A and B blocks.
- Row 1 & 3 A>B>A>B, Row 2 & 4: B>A>B>A.
- Sew your rows together. 1>2>3>4
- Piece together your 3 1/2' WOF strips as necessary to add the border around the quilt top as shown.



QUILT ASSEMBLY

Sew rights sides together.

- Place BACKING FABRIC on a large surface wrong side up. Stretch it with masking tape against that surface.
- Place BATTING on top of backing fabric.
- Place TOP on top of the batting with right side facing up. Smooth away wrinkles using your hands.
- Pin all layers together and baste with basting thread, using long stitches. You can also use safety pins to join the layers.
- Machine or hand quilt starting at the center and working towards the corners. Remember that quilting motifs are a matter of personal preference. Have fun choosing yours!
- After you finished, trim excess of any fabric or batting, squaring the quilt to proceed to bind it.

- Start sewing at $\frac{1}{4}$ " of the border, stitching all the layers. Do the same in the four corners of the quilt.
- Stop stitching before you reach the last 5 or 6 inches. Cut the threads and remove the quilt from under the machine presser foot. Lay the loose ends of the binding flat along the quilt edge, folding the ends back on themselves where they meet. Press them together to form a crease. Using this crease as the stitching line, sew the two open ends of the binding with right sides together (you can help yourself marking with a pencil if the crease is difficult to see).
- Trim seam to $\frac{1}{4}$ " and press open. Complete the sewing. Turn binding to back of the quilt, turn raw edge inside and stitch by hand using blind stitch.

DIAGRAM B1

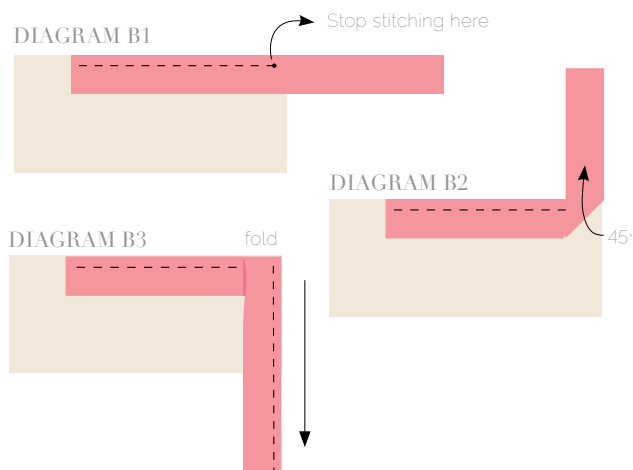


DIAGRAM B2

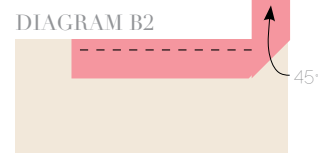
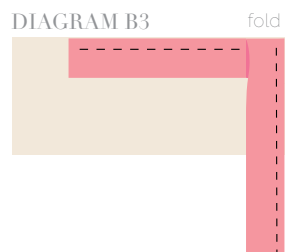


DIAGRAM B3



BINDING

Sew rights sides together.

- Cut enough strips $1\frac{1}{2}$ " wide by the width of the fabric **E** to make a final strip 210" long. Fold strip in half and press. Start sewing the binding strip in the middle of one of the sides of the quilt, placing the strip right side down with the fold edge of your binding facing in and leaving an approximated 5" tail. Sew with $\frac{1}{4}$ " seam allowance (using straight stitch), aligning the strip's raw edge with the quilt top's raw edge.
- Stop stitching $\frac{1}{4}$ " before the edge of the quilt (**DIAGRAM B 1**). Clip the threads. Remove the quilt from under the machine presser foot. Fold the strip in a motion of 45° and upward, pressing with your fingers (**DIAGRAM B2**). Hold this fold with your finger, bring the strip down in line with the next edge, making a horizontal fold that aligns with the top edge of the quilt (**DIAGRAM B3**).



artgalleryfabrics.com

NOTE: While all possible care has been taken to ensure the accuracy of this pattern, We are not responsible for printing errors or the way in which individual work varies. Please read instructions carefully before starting the construction of this quilt. If desired, wash and iron your fabrics before starting to cut.