

X
X
X
X
X
X
X
X
X
X
X
X

A vibrant quilt square is the central focus, featuring a complex geometric design. At its core is a bright orange star-like shape composed of four triangles meeting at the center. This central element is surrounded by a ring of eight triangles, alternating between dark blue/black and light blue/pink patterned fabrics. The outermost ring consists of four large black triangles with green diagonal stitching, and four smaller triangles with various patterns including green floral, pink and black geometric, and blue and white floral. The entire quilt square is bordered by a wide, solid orange fabric. The quilt is laid on a surface with a large-scale, abstract pattern of blue and white floral or leaf shapes on a light background.

x x x x x x x x x x x x x x x x x x

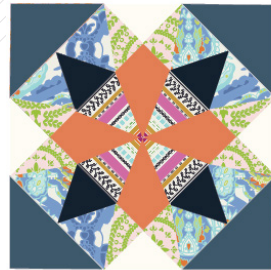


Citrus Haze

QUILT DESIGNED BY AGF STUDIO

Indigo & Aster

FABRICS DESIGNED BY BARI J.



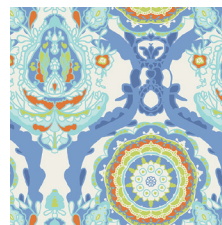
INDIGO'S ILLUSION



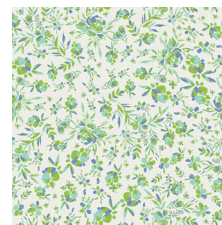
IDA-14800
LA FLORAISON LIT



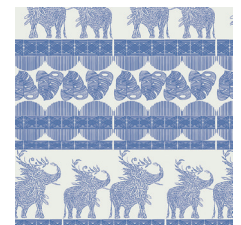
IDA-14801
FOLIAGE ESCAPE LAPIS



IDA-14802
GRAND OPULENCE BLEU



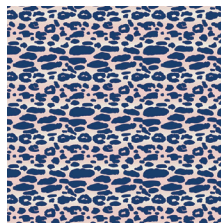
IDA-14803
BONHEUR FRESH



IDA-14804
GOOD FORTUNES ROYAL



IDA-14805
TREASURE SPLENDOR TANG



IDA-14806
ANIMALIA EXOTICA OASIS



IDA-14807
COURBÉ IKAT SKY

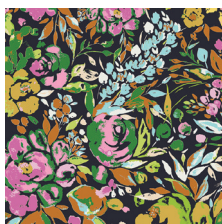


IDA-14808
MAXIMAL BRODERIE COOL



IDA-14809
LUSH BOUQUET

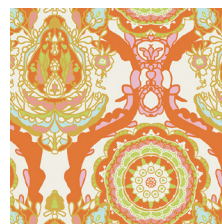
ASTER'S ALLUSION



IDA-24800
LA FLORAISON DIM



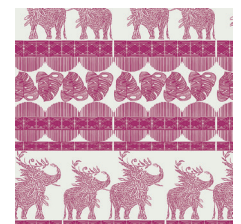
IDA-24801
FOLIAGE ESCAPE VERT



IDA-24802
GRAND OPULENCE



IDA-24803
BONHEUR SWEET



IDA-24804
GOOD FORTUNES CERISE



IDA-24805
TREASURE SPLENDOR ACID



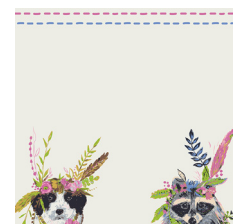
IDA-24806
ANIMALIA EXOTICA SAND



IDA-24807
COURBÉ IKAT ROSE



IDA-24808
MAXIMAL BRODERIE WARM



IDA-24810
RADIANT MENAGERIE



FEEL THE DIFFERENCE © 2018 Courtesy of Art Gallery Quilts LLC. All Rights Reserved.

Citrus Haze

FINISHED SIZE | 12' x 12'

FABRIC REQUIREMENTS

Fabric A	IDA-14805	FE
Fabric B	IDA-14808	FE
Fabric C	IDA-24807	FE
Fabric D	IDA-14805	FE
Fabric E	IDA-14802	FE
Fabric F	IDA-24802	FE
Fabric G	PE-411	FE
Fabric H	PE-454	FE
Fabric I	PE-454	FE
Fabric J	PE-408	FE
Fabric K	PE-428	FE
Fabric L	IDA-24807	FE
Fabric M	IDA - 24808	FE

CUTTING DIRECTIONS

*1/4" seam allowances are included.
WOF means width of fabric.*

- Cut four (4) 8 X 4' in strips from fabric **A**.
- Cut two (2) 3 x 3'in squares from fabric **B**.
- Cut four (4) 4 x 5'in strips from fabric **B**.
- Cut two (2) 3'in squared strips from fabric **C**.
- Cut four (4) 3 x 5'in strips from fabric **G**.
- Cut four (4) 4 x 5' in strips from fabric **H**
- Cut eight (8) 3 X 3' in strips from fabric **I**.
- Cut eight (8) 3 x 3: in strips from fabric **J**.

CONSTRUCTION

Sew all rights sides together with 1/4" seam allowance.

- Use the paper piecing templates found at the end of these instructions to sew all of the blocks.
- If you are new to paper piecing check out this video tutorial on how to paper piece:
- <http://www.agfblog.com/2017/08/paper-piecing-tips-how-to-make-a-crossed-canoes-block-.html>
- The block is divided into six (6) different pieces.
- Refer to the diagram below for correct fabric attachment.
- Tip: it is better if you do all the paper piecing first and after attach all pieces together.

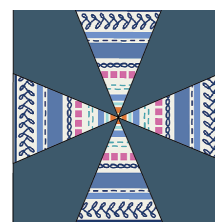
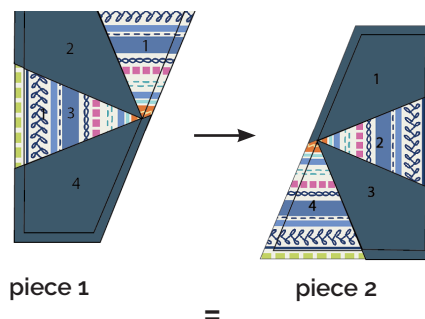
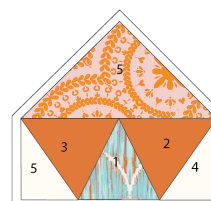
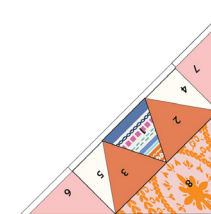


DIAGRAM 1



piece 3 (X2)



piece 4 (X2)

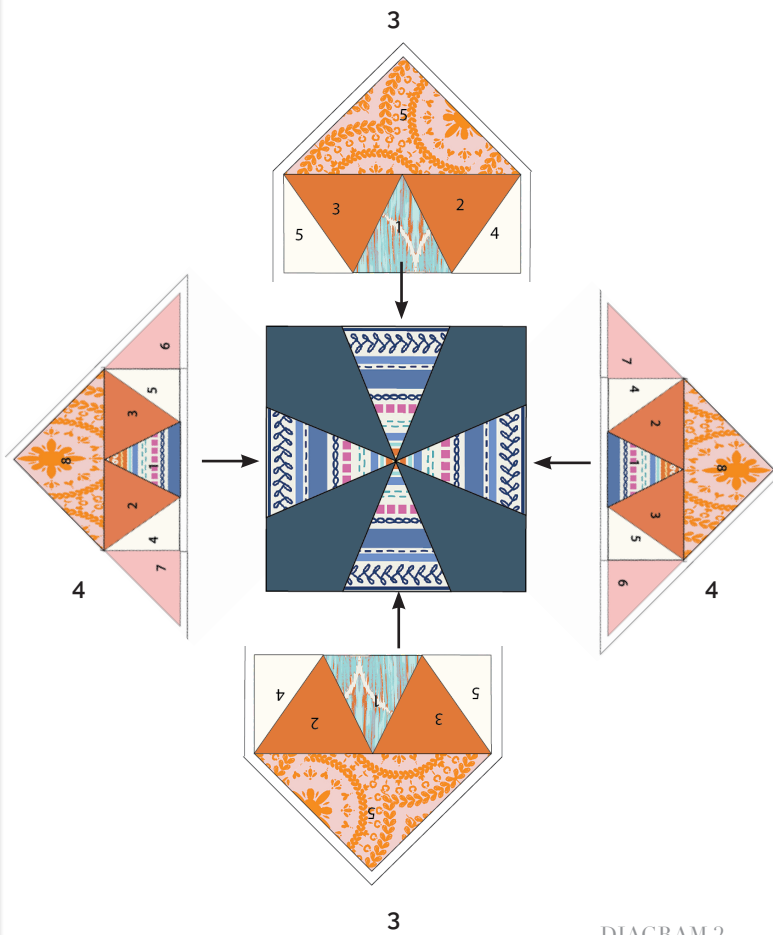


DIAGRAM 2

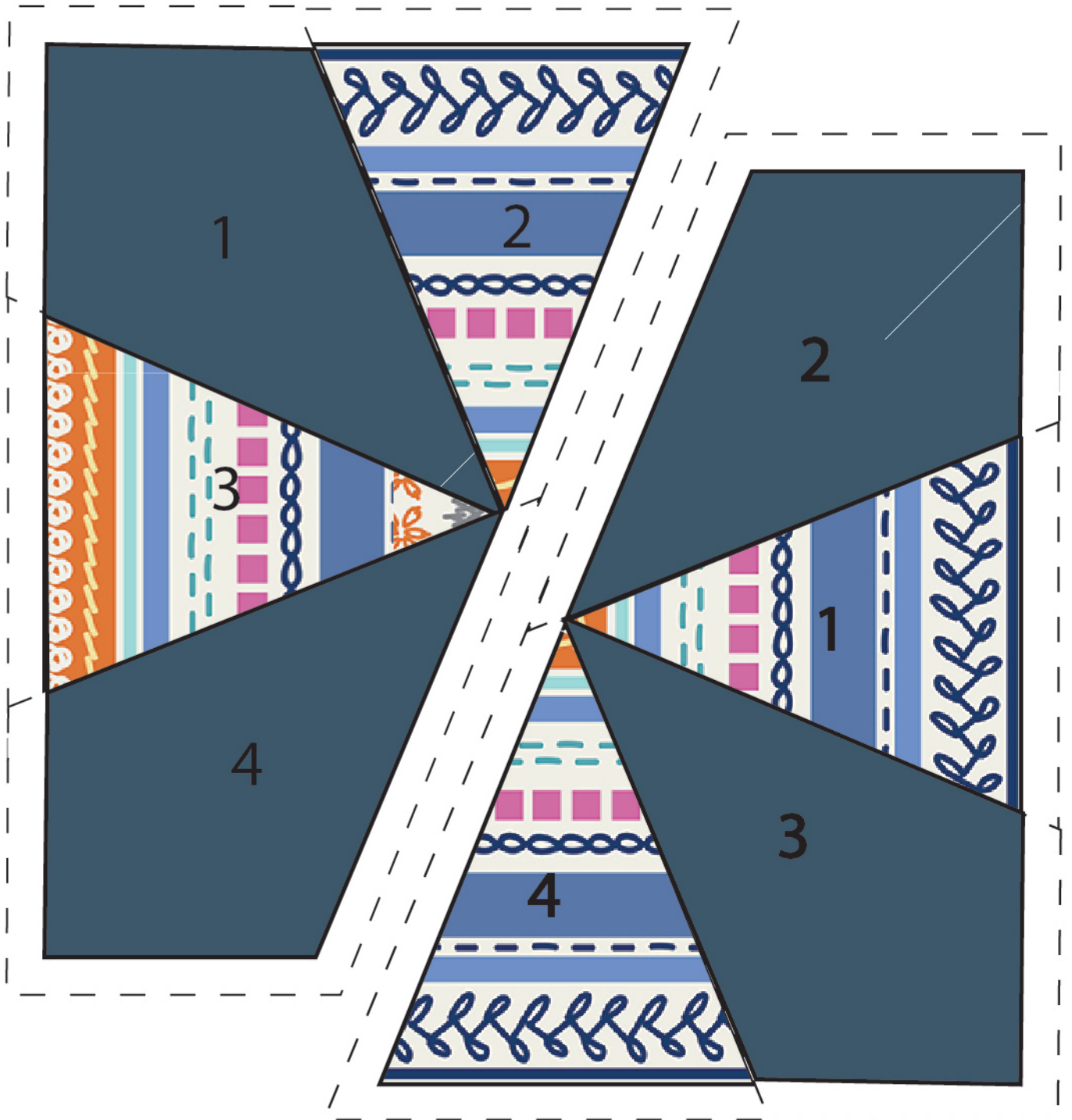
- Attach piece **1 & 2** together as shown in the diagram below.
- Once you are done with the middle block attach pieces **3 & 4** to each sides of the block. Make sure teh pieces are facing each other.
- Now, quilt as desired.
- And, if you want to create the other quilt blocks just follow the same instructions. All paper piecing templates are provided below in case you want to create all of them?



artgalleryfabrics.com

NOTE: While all possible care has been taken to ensure the accuracy of this pattern, We are not responsible for printing errors or the way in which individual work varies.

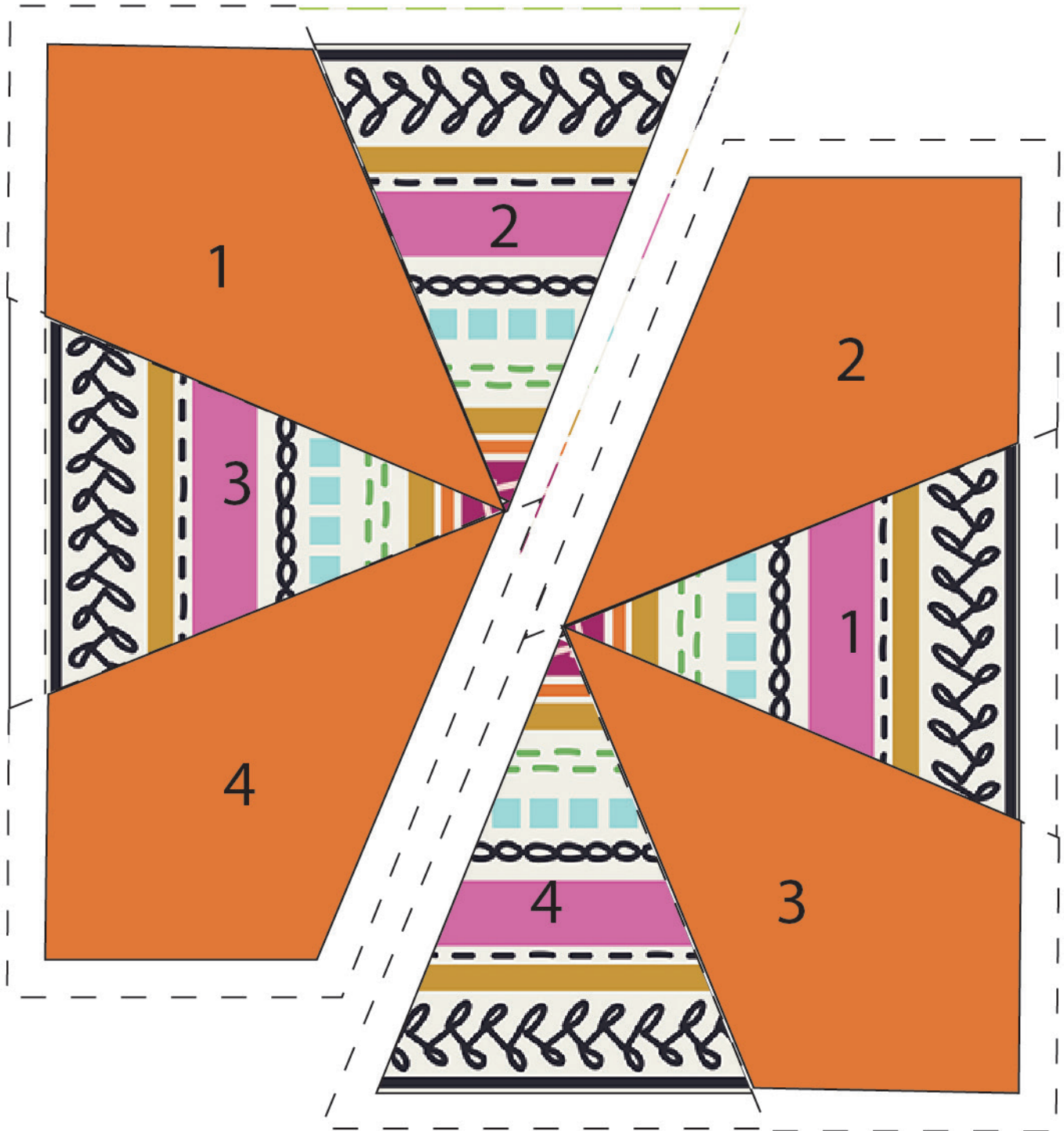
Please read instructions carefully before starting the construction of this quilt. If desired, wash and iron your fabrics before starting to cut.

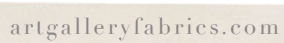


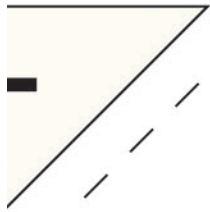




=====

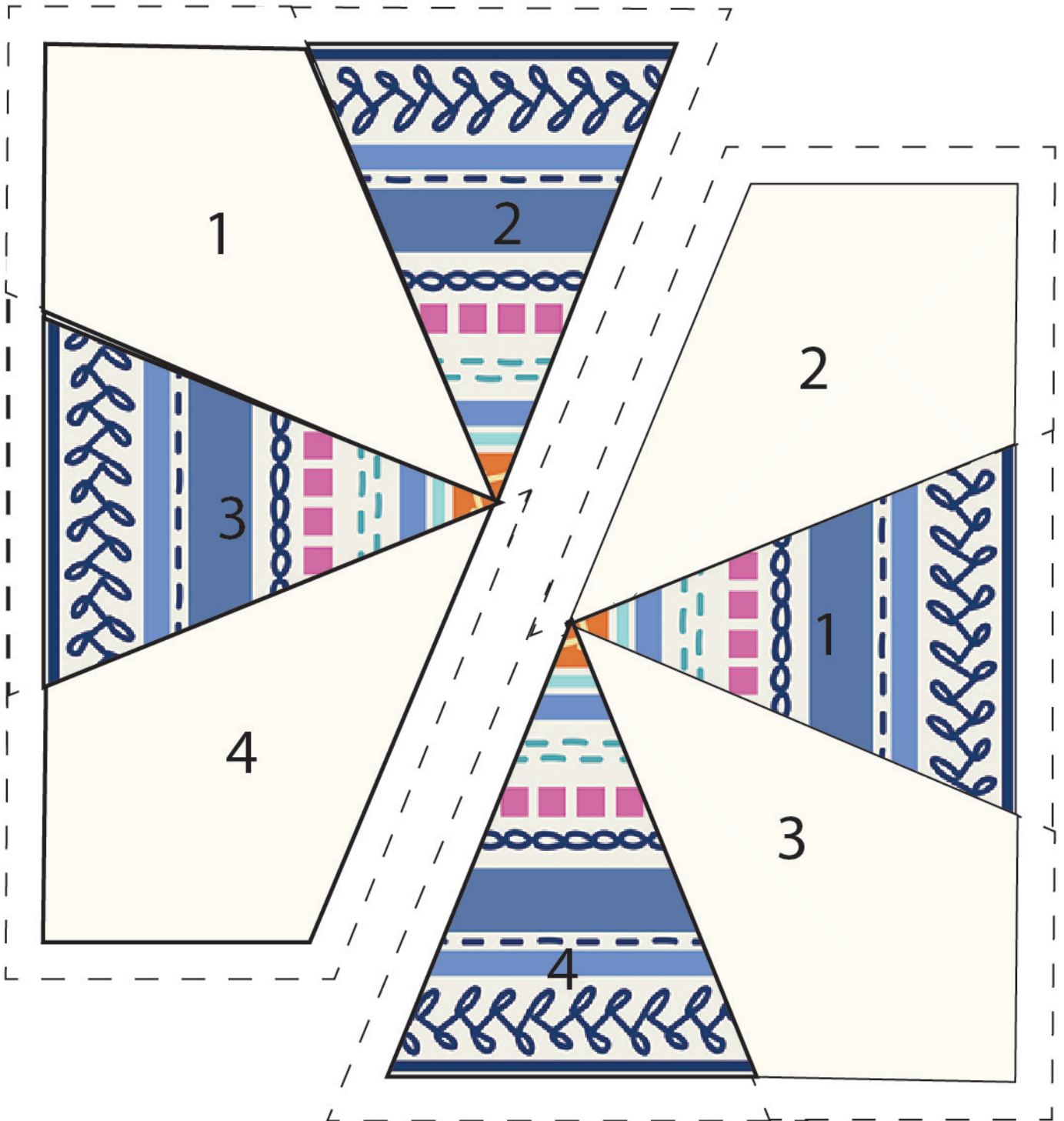


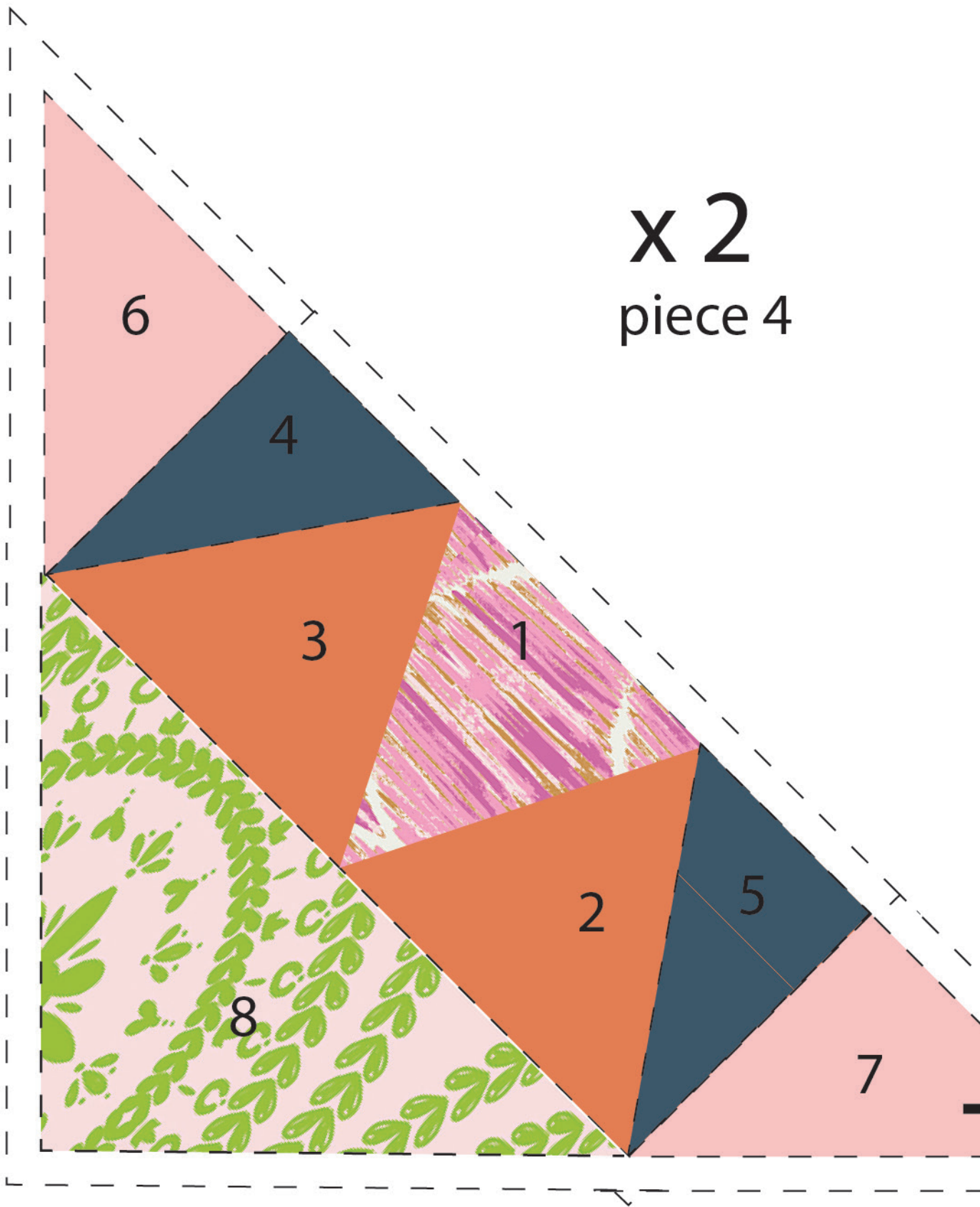


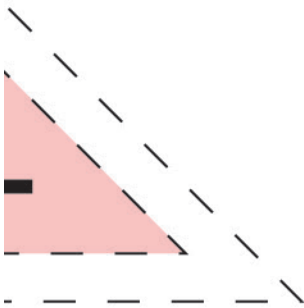
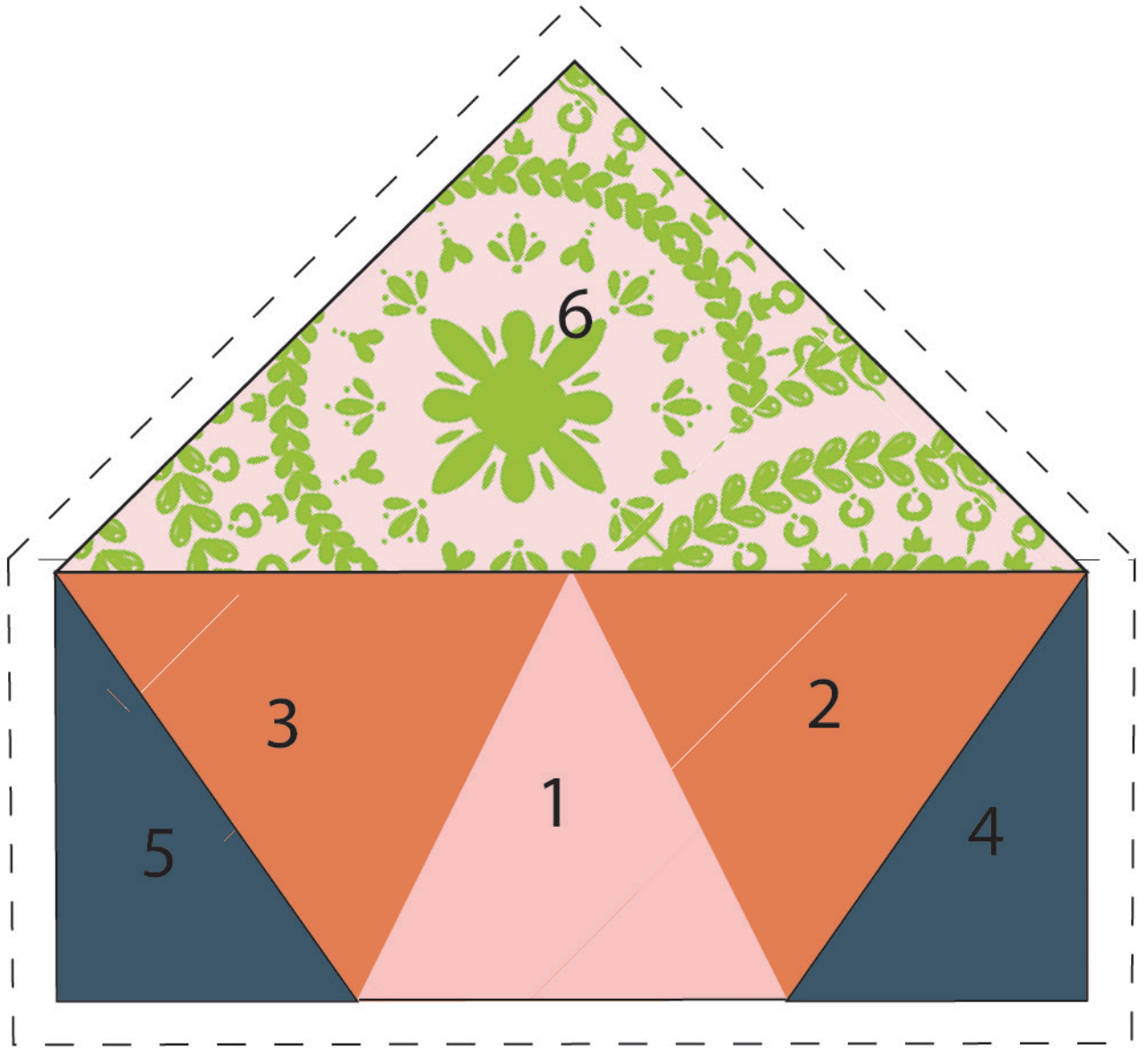


x 2

piece 3







x 2
piece 3







x 2
piece 3