

A white square pillow is the central focus, featuring a vibrant geometric design. The design consists of several overlapping triangles. At the top is a yellow triangle with white polka dots and a frayed edge. Below it is a pink triangle. In the center is a black triangle. The largest triangle at the bottom is a checkered pattern in shades of orange, yellow, and white, with a purple fringe along its bottom edge. The pillow is set against a dark, textured wooden background and rests on a bed of white gravel. To the right, a portion of another quilted pillow with a colorful geometric pattern is visible.

× × × × × × × × × × × × × × × × × × ×

A DIVISION OF AGF

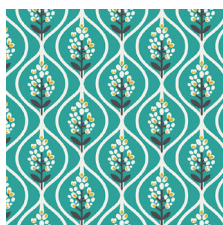
JOYRIDE

PILLOW DESIGNED BY AGF STUDIO

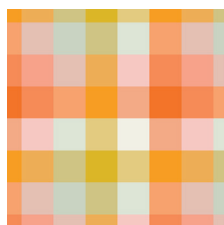


FABRICS DESIGNED BY DANA WILLARD

SUMMER PICNIC



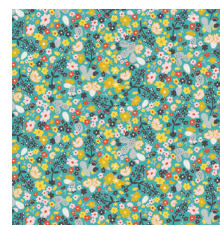
DAT-89400
BLUEBONNET DUSK



DAT-89401
PICNIC PLAID



DAT-89403
CACTUS BLOOM NOON



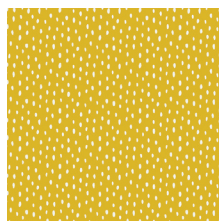
DAT-89404
SUMMER FIELD



DAT-89405
TACO LOVE LIGHT



DAT-89406
JOYRIDE NIGHT

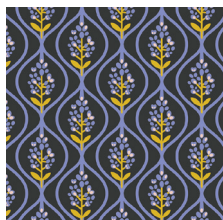


DAT-89407
SCATTERED SHOWERS WARM



DAT-89408
PRICKLY

WINTER BREAK



DAT-99400
BLUEBONNET MIDNIGHT



DAT-99402
GRAZING GOATS



DAT-99403
CACTUS BLOOM MOONLIGHT



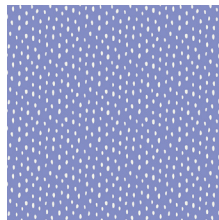
DAT-99404
WINTER FIELD



DAT-99405
TACO LOVE BRIGHT



DAT-99406
JOYRIDE DAY



DAT-99407
SCATTERED SHOWERS COOL



DAT-99409
PARALLEL PARKING





FINISHED SIZE | 20" x 20"

FABRIC REQUIREMENTS

Fabric A	DAT-89407	FE.
Fabric B	DAT-89401	FE.
Fabric C	PE-413	FE.
Fabric D	PE-411	FE.
Fabric E	DAT-89403	FE.
Fabric F	PE-436	5/8 yd.
Fabric G	DAT-99407	FE.

BACKING FABRIC

PE-436 5/8 yds. (included)

CUTTING DIRECTIONS

*1/4" seam allowances are included.
WOF means width of fabric.*

DIAGRAM 1

Cut one (1) template 3 from fabric **A**

Cut one (1) template 4 from fabric **B**

Cut two (2) 2 1/2" x 10" strips from fabric **B**

Cut one (1) template 2 from fabric **C**

Cut one (1) template 1 from fabric **D**

Cut one (1) template 5 from fabric **E**

Cut one (1) 20 1/2" squares from fabric **F**

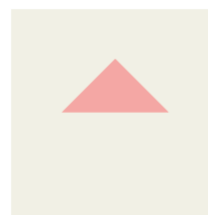
Cut two (3) 2 1/2" x 12" strips from fabric **G**

CONSTRUCTION

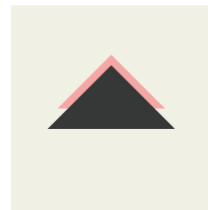
Sew all rights sides together with 1/4" seam allowance.

- Fold fabric **F** 20 1/2" square by half and press.
- Open and you will have a center mark which will guide you to properly place your templates.
- Follow the diagram for fabric placement and attachment.
- It's recommended to use steam-a-seam or any light weight fusible interfacing to place your fabric easily.

XXXXXXXXXXXXXXXXXXXXXXXXXXXXXXXXXXXX



Template 1 (fabric D)



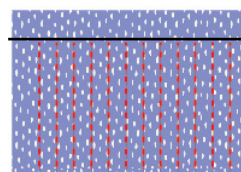
Template 2 (fabric C)



Template 5 (fabric E)

DIAGRAM 1

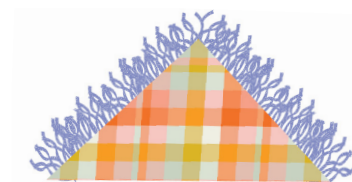
- Set pillow base a side and proceed to create the fringes.
- Use the two (2) 2 1/2 x 10" strips from fabric **B & G**.
- Mark and cut every 1/4" in or thinner .
- Refer to the diagram below to cut your fringes. Trim until your desired length.
- Tip: the roller cutter will definitely make things easier when cutting such short distances.



Leave half 1/2" without trimming

DIAGRAM 2

- Remember to cut all the way to the top LEAVING 1/2" in for seam allowance.
- Attach finished fabric **G** fringe to the wrong side fabric **B** template **4**
- Refer to the diagram below:



- Repeat the same process to create the fringe using fabric **B** 2 ½' x 10' strips
- Once you finish, attach fabric **B** fringe to the wrong side of fabric **A** template **3**.

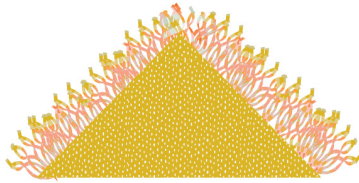


DIAGRAM 4

- Place templates **3 & 4** on top of the pillow front and top stitch. Your final pillow front should look like this:



- Quilt if desired!

PILLOW BACKING

Sew all rights sides together with ¼" seam allowance. Press open.

- To make a envelope back for your pillow cut two (2) 20 x 17' rectangles and fold one 17' side on each rectangle in 1/2' and press and then fold another 1/2' and press.
- Top stitch as close to the edge as possible. Place rectangles right side together on top of each other to the front of your pillow and stitch all the way around your pillow at ¼' seam allowance.
- Clip corners at seam allowance and flip piece to the right side of the fabric.
- Fill pillow with a 20 x 20' pillow form and enjoy!



artgalleryfabrics.com

NOTE: While all possible care has been taken to ensure the accuracy of this pattern, We are not responsible for printing errors or the way in which individual work varies. Please read instructions carefully before starting the construction of this quilt. If desired, wash and iron your fabrics before starting to cut.

A diagram showing two parallel diagonal lines within a square frame. The top line is labeled 'Template 1' and the bottom line is labeled 'Template 2'. The lines are parallel and run from the bottom-left towards the top-right. The text 'Template 1' is positioned above the top line, and 'Template 2' is positioned below the bottom line.

Template 1

Template 2

