

Colette



FUSIONS

by AGF

FREE PATTERN

XXXXXXXXXXXXXXXXXXXXXXXXXXXX



Colette

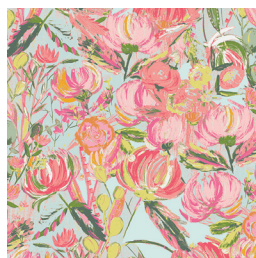


BLOCKS DESIGNED BY AGF STUDIO *AGFstudio*

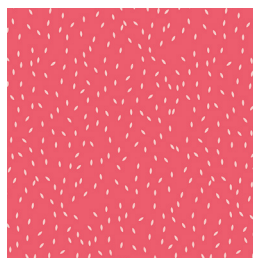


PRINTEMPS FUSION

FABRICS DESIGNED BY AGF STUDIO



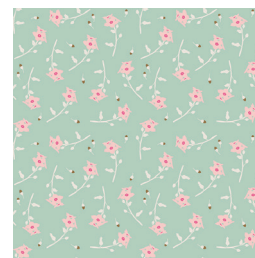
FUS-P-1200
PAINTED DESERT PRINTEMPS



FUS-P-1201
SCATTER PRINTEMPS



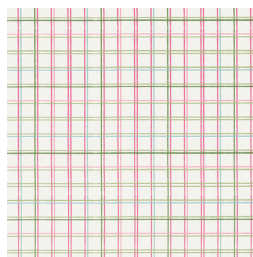
FUS-P-1202
LUMINOUS FIELD PRINTEMPS



FUS-P-1203
FRESHLY PICKED PRINTEMPS



FUS-P-1204
FIETSEN PRINTEMPS



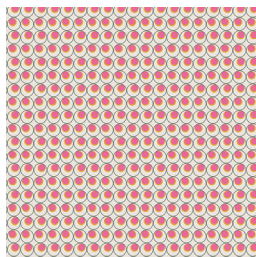
FUS-P-1205
PLAID BEAT PRINTEMPS



FUS-P-1206
LIBRARY GARDENS PRINTEMPS



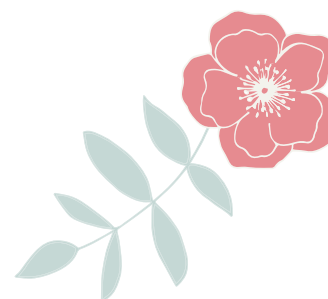
FUS-P-1207
PERENNIAL PRINTEMPS



FUS-P-1208
ROUNDED SEEDS PRINTEMPS



FUS-P-1209
MAGNOLIA PRINTEMPS





FINISHED SIZE | 12' x 12'

FABRIC REQUIREMENTS

Fabric A	FUS-P-1206	FQ yd.
Fabric B	PE-472	FQ yd.
Fabric C	PE-408	5/8 yd.
Fabric D	PE-431	FE yd.
Fabric E	FUS-P-1200	FE yd.
Fabric F	PE-451	FE yd.
Fabric G	PE-420	FE yd.
Fabric H	FUS-P-1203	FE yd.
Fabric I	PE-452	FE yd.
Fabric J	FUS-P-1207	FQ yd.
Fabric K	PE-471	FE yd.

BACKING FABRIC

DEN-L-400	1/2 yd
DEN -S- 2006	1/2 yd

CUTTING DIRECTIONS

1/4" seam allowances are included.
WOF means width of fabric.

- Fabric **A**:
- Three (3) strips of 16 x 2'
- Two (2) strips of 16 x 3 1/2'
- Fabric **B**:
- Six (6) strips of 16 x 2'
- Fabric **C**
- Twenty (2) strips of 16 x 2'
- Fabric **D**
- Three (3) strips of 16 x 2'
- Fabric **E**:
- Three (3) strips of 16 x 2'
- Two (2) strips of 16 x 3 1/2'

XXXXXXXXXXXXXXXXXXXXXXXXXXXXXXXXXXXX

- Fabric **F**:
- Three (3) strips of 16 x 2'
- Two (2) strips of 16' x 3 1/2'
- Fabric **G**:
- Four (4) strips of 16 x 2'
- Fabric **H**:
- Three (3) strips of 16 x 2'
- Fabric **I**:
- Four (4) strips of 16 x 2'
- Fabric **J**:
- Three (3) strips of 16 x 2'
- Fabric **K**:
- Eight (8) strips of 16 x 2'

CONSTRUCTION

Sew all rights sides together with 1/4" seam allowance.

- **Block 1**
- Join strips of 16 x 2" and 16 x 3 1/2" in fabrics **E, C, G, F**

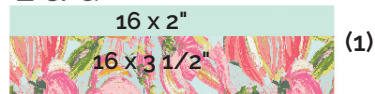
E & G



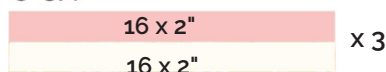
E & C



E & G



C & F



C & E

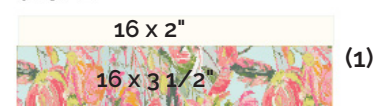


DIAGRAM 1

- Once your fabric strips are attached in pairs, sew them in the following order. Think of a lock cabin block when attaching them together.

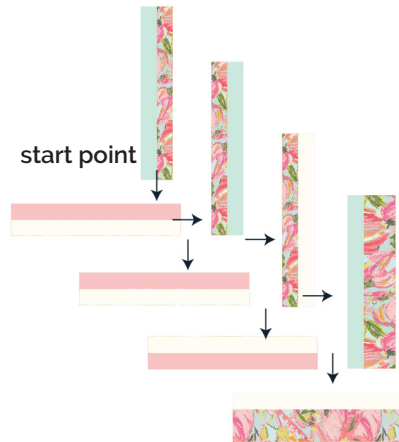


DIAGRAM 2

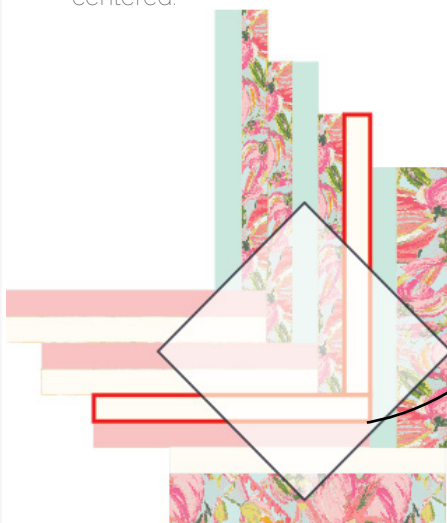
- You should have a block looking like this:



DIAGRAM 3

- Cutting your block

- Use a 12 x 12" in ruler to mark a square on top of the block you just did. If you don't have a ruler, create a paper template to cut your 12" square block.
- Tip: use clear paper to create your template. This will help you place your template properly centered.



The square pattern should be touching the tip of fabric C intersecting strips right in the middle.

DIAGRAM 4



- Your final block should look like this:



- **Block 2**
- Repeat the same process using fabrics **B, C, D, J**.

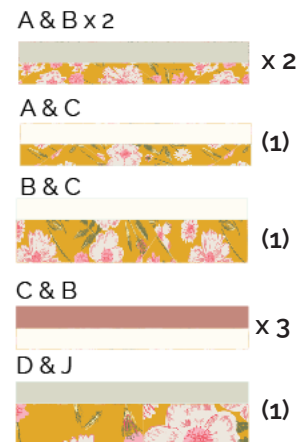


DIAGRAM 5

- Once your fabric strips are attached, sew them in the following order. Think of a lock cabin block when attaching them.

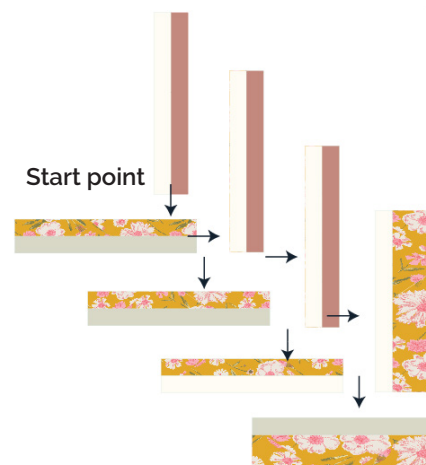


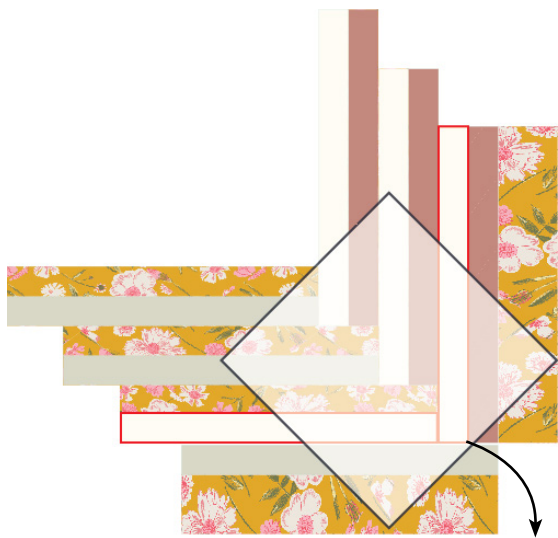
DIAGRAM 6

- You should have a block looking like this: .



- Cutting your block

- Once you see everything is properly balanced cut your final block with a roller cutter. Refer to the diagram below to properly place your template or ruler.



The square pattern should be touching the tip of fabric **C** intersecting strips right in the middle.

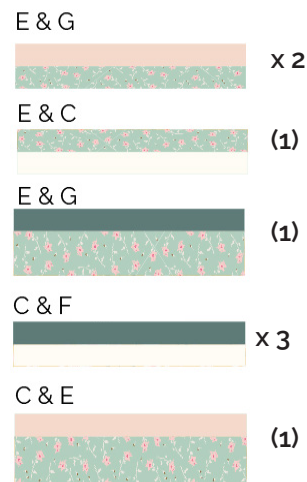
DIAGRAM 8

- Your final block should look like this:

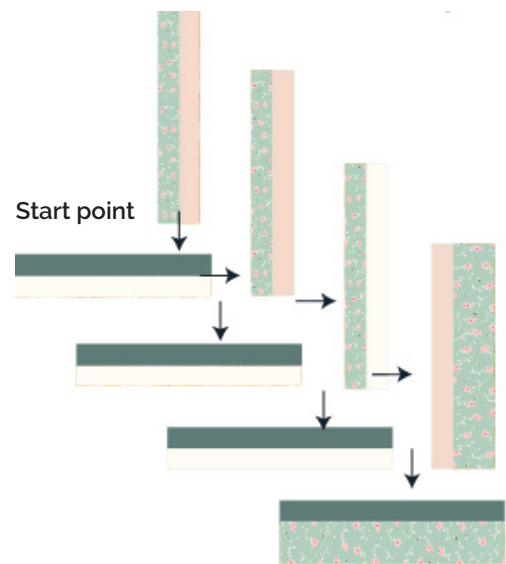


- Block 3

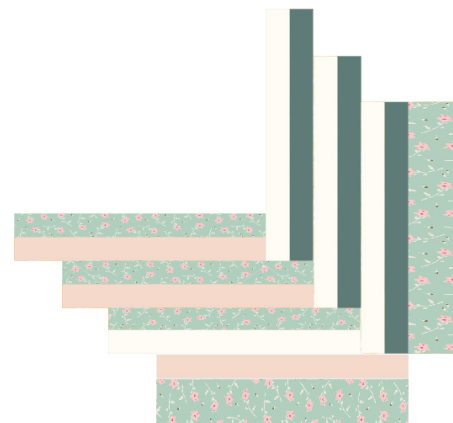
- Join strips of 16 x 2" and 16 x 3 1/2" in fabrics **C, H, K, I**. Follow the diagram below for strip attachment .



- Once your fabric strips are attached, sew them in the following order. Think of a lock cabin block when attaching them.

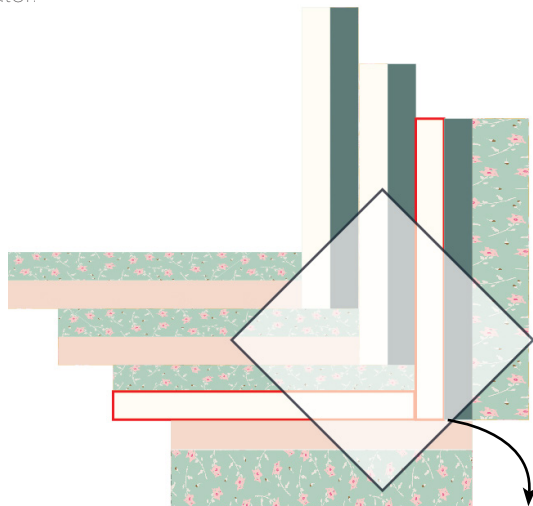


- You should have a block looking like this: .



- Cutting your block

- Once you see everything is properly balanced cut your final block with a roller cutter. Refer to the diagram below to properly place your template or ruler.



The square pattern should be touching the tip of fabric **C** intersecting strips right in the middle.

DIAGRAM 12

- Your final block should look like this:



- Block 4

- Join strips of 16 x 2" and 16 x 3 1/2" in fabrics **A,B,C & D**. Follow the diagram below for strip attachment .

A & B x 2



A & C



C & D x 4



A



DIAGRAM 13



- Once your fabric strips are attached, sew them in the following order. Think of a lock cabin block when attaching them.

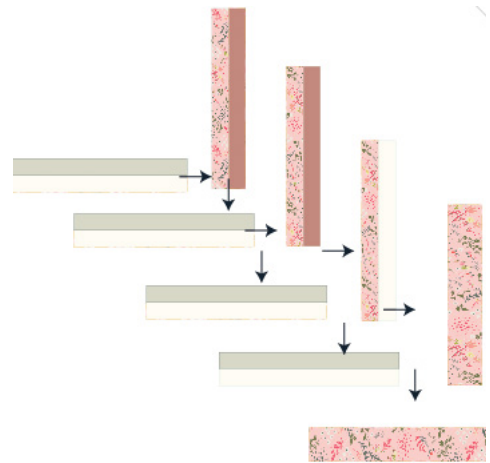
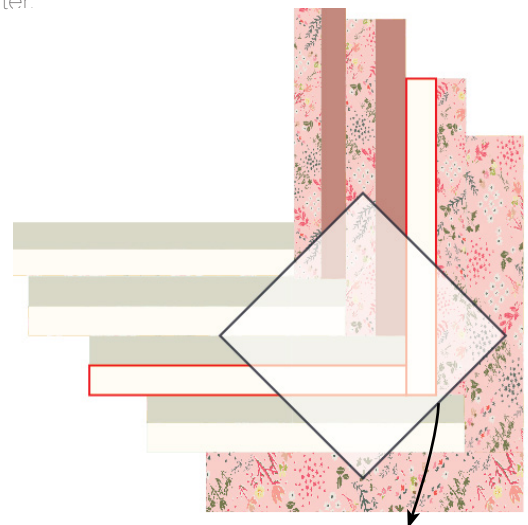


DIAGRAM 14

- Cutting your block

- Once you see everything is properly balanced cut your final block with a roller cutter. Refer to the diagram below to properly place your template or ruler.



The square pattern should be touching the tip of fabric C intersecting strips right in the middle.

DIAGRAM 15

- Your final block should look like this:



- Once assembled, quilt as desired and you are done!



FEEL THE DIFFERENCE

artgalleryfabrics.com

NOTE: While all possible care has been taken to ensure the accuracy of this pattern, We are not responsible for printing errors or the way in which individual work varies.

Please read instructions carefully before starting the construction of this quilt. If desired, wash and iron your fabrics before starting to cut.