



ANGLES

FREE PATTERN

XXXXXXXXXXXXXXXXXXXXXXXXXXXX

A DIVISION OF AGF



jessica swift

QUILT DESIGNED BY ART GALLERY FABRICS

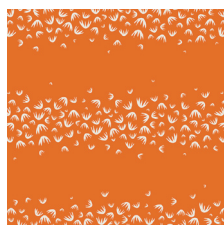


FABRICS DESIGNED BY JESSICA SWIFT

FAABULA



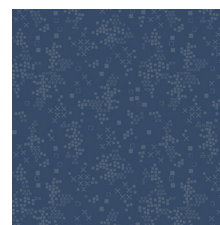
TAL-65300
TIGRIS INDIGO



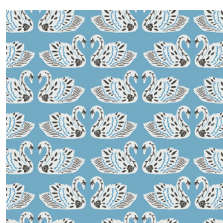
TAL-65301
MAGIJA PUMPKIN



TAL-65302
ODESSA TRADITIONALE



TAL-65303
SOFIA MIDNIGHT



TAL-65304
BALTIC SWANS SKY



TAL-65305
ZIRKUSBAU PRIMARY



TAL-65306
LORE ROOFTOP

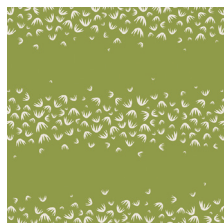


TAL-65307
VILLAGE MEANDER

FAIRYTALE



TAL-75300
TIGRIS LOLLIPOP



TAL-75301
MAGIJA OLIVE



TAL-75302
ODESSA DREAM



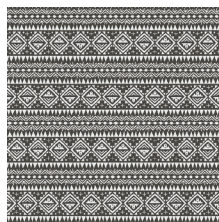
TAL-75303
SOFIA SUNRISE



TAL-75304
BALTIC SWANS SAND



TAL-75305
ZIRKUSBAU CANDY



TAL-75306
LORE COBBLESTONE



TAL-75307
VILLAGE ADVENTURE



FEEL THE DIFFERENCE © 2018 Courtesy of Art Gallery Quilts LLC. All Rights Reserved.



FINISHED SIZE | 60" x 60"

FABRIC REQUIREMENTS

Fabric A	TAL-65300	½ yd.
Fabric B	TAL-65301	½ yd.
Fabric C	TAL-75300	½ yd.
Fabric D	TAL-75303	¼ yd.
Fabric E	TAL-75305	¼ yd.
Fabric F	TAL-75301	¼ yd.
Fabric G	TAL-65303	1 yd.
Fabric H	PE-436	7⅞ yd.
Fabric I	PE-439	⅝ yd.
Fabric J	PE-402	⅝ yd.
Fabric K	PE-459	⅝ yd.
Fabric L	PE-414	⅝ yd.
Fabric M	PE-461	⅝ yd.
Fabric N	PE-417	⅝ yd.

BINDING FABRIC

Fabric **B** TAL-65301 (Included)

BACKING FABRIC

TAL-65303 4 yds. (Suggested)

CUTTING DIRECTIONS

¼" seam allowances are included.
WOF means width of fabric.

Seven (7) 5½" x 5½" diamonds from fabrics **A** and **C**.

Seven (7) 5½" x 5½" squares from fabrics **B**, **D**, **E** and **F**.

Forty (40) 5½" x 5½" squares from fabric **G**.

Three hundred twenty (320) 5½" x 5½" squares from fabric **H**.

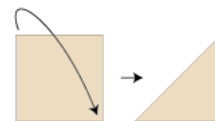
Twenty six (26) 5½" x 5½" squares from fabrics **I**, **J**, **L** and **M**.

Twenty eight (28) 5½" x 5½" squares from fabrics **K** and **N**.

CONSTRUCTION

Sew all rights sides together with ¼" seam allowance.

- Take all the squares from fabric **H** and fold them on the diagonal.



Row 1:

- Take six (6) squares from fabric **I**, **J**, **K**, **L**, **M** and **N** and align them in three different rows following the Diagram.



DIAGRAM 1

- Take thirty six (36) folded squares from fabric **H** and place them on top of the aligned squares.



DIAGRAM 2

- Take another set of thirty six (36) folded squares from fabric **H** and place them on top of the aligned squares following Diagram 3.
- Hold every pair of folded squares from fabric **H** to its correspondent square from **I**, **J**, **K**, **L**, **M** or **N** in place with a pin.



DIAGRAM 3

- Join every set of squares to form three (3) Row 1



DIAGRAM 4

- The next step is to make three (3) Row 2.
- The only difference between Row 1 and Row 2 is the direction of the placement of the folded squares from fabric **H**.

• Row 2:

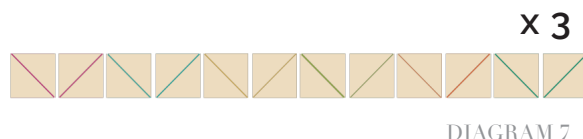
- Take six (6) squares from fabric **I, J, K, L, M** and **N** and align them in three different rows following the Diagram.



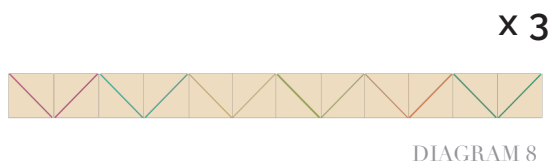
- Take thirty six (36) folded squares from fabric **H** and place them on top of the aligned squares.



- Take another set of thirty six (36) folded squares from fabric **H** and place them on top of the aligned squares following Diagram 7.
- Hold every pair of folded squares from fabric **H** to its correspondent square from **I, J, K, L, M** or **N** in place with a pin.



- Join every set of squares to form three (3) Row 2



• Row 3:

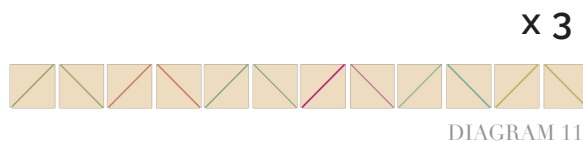
- Take six (6) squares from fabric **L, M, N, I, J** and **K** and align them in three different rows following the Diagram.



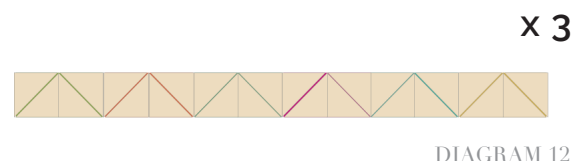
- Take thirty six (36) folded squares from fabric **H** and place them on top of the aligned squares.



- Take another set of thirty six (36) folded squares from fabric **H** and place them on top of the aligned squares following Diagram 11.
- Hold every pair of folded squares from fabric **H** to its correspondent square from **I, J, K, L, M** or **N** in place with a pin.



- Join every set of squares to form three (3) Row 3.



• Row 4:

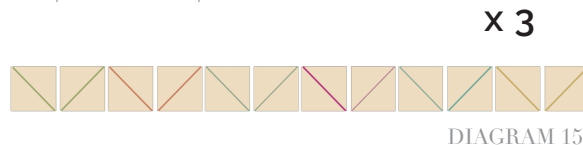
- Take six (6) squares from fabric **L, M, N, I, J** and **K** and align them in three different rows following the Diagram.



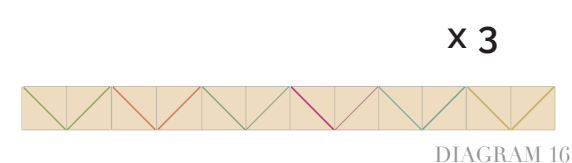
- Take thirty six (36) folded squares from fabric **H** and place them on top of the aligned squares.



- Take another set of thirty six (36) folded squares from fabric **H** and place them on top of the aligned squares following Diagram 11.
- Hold every pair of folded squares from fabric **H** to its correspondent square from **I, J, K, L, M** or **N** in place with a pin.



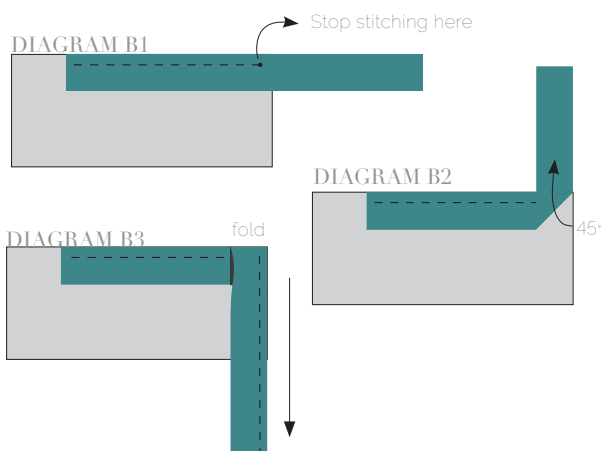
- Join every set of squares to form three (3) Row 4.



BINDING

Sew rights sides together.

- Cut enough strips $1\frac{1}{2}$ ' wide by the width of the fabric **B** to make a final strip 250' long. Start sewing the binding strip in the middle of one of the sides of the quilt, placing the strip right side down and leaving an approximated 5' tail. Sew with $\frac{1}{4}$ ' seam allowance (using straight stitch), aligning the strip's raw edge with the quilt top's raw edge.
- Stop stitching $\frac{1}{4}$ ' before the edge of the quilt (**DIAGRAM B1**). Clip the threads. Remove the quilt from under the machine presser foot. Fold the strip in a motion of 45° and upward, pressing with your fingers (**DIAGRAM B2**). Hold this fold with your finger, bring the strip down in line with the next edge, making a horizontal fold that aligns with the top edge of the quilt (**DIAGRAM B3**). Start sewing at $\frac{1}{4}$ ' of the border, stitching all the layers. Do the same in the four corners of the quilt.



- Stop stitching before you reach the last 5 or 6 inches. Cut the threads and remove the quilt from under the machine presser foot. Lay the loose ends of the binding flat along the quilt edge, folding the ends back on themselves where they meet. Press them together to form a crease. Using this crease as the stitching line, sew the two open ends of the binding with right sides together (you can help yourself marking with a pencil if the crease is difficult to see).
- Trim seam to $\frac{1}{4}$ ' and press open. Complete the sewing. Turn binding to back of the quilt, turn raw edge inside and stitch by hand using blind stitch.
- Congrats! You've finished your Quilt!



artgalleryfabrics.com

NOTE: While all possible care has been taken to ensure the accuracy of this pattern, We are not responsible for printing errors or the way in which individual work varies.

Please read instructions carefully before starting the construction of this quilt. If desired, wash and iron your fabrics before starting to cut.