

TIGRIS



FREE PATTERN

XXXXXXXXXXXXXXXXXXXXXXXXXXXX

ANGLES

A DIVISION OF AGF

TIGRIS

jessica swift

QUILT DESIGNED BY JESSICA SWIFT



TALLINN

FABRICS DESIGNED BY JESSICA SWIFT

FAABULA



TAL-65300
TIGRIS INDIGO



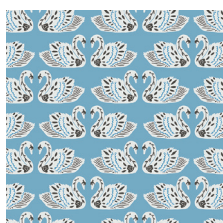
TAL-65301
MAGIJA PUMPKIN



TAL-65302
ODESSA TRADITIONALE



TAL-65303
SOFIA MIDNIGHT



TAL-65304
BALTIC SWANS SKY



TAL-65305
ZIRKUSBAU PRIMARY



TAL-65306
LORE ROOFTOP

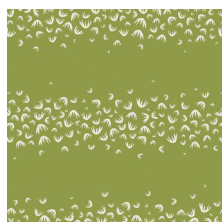


TAL-65307
VILLAGE MEANDER

FAIRYTALE



TAL-75300
TIGRIS LOLLIPOP



TAL-75301
MAGIJA OLIVE



TAL-75302
ODESSA DREAM



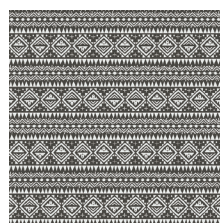
TAL-75303
SOFIA SUNRISE



TAL-75304
BALTIC SWANS SAND



TAL-75305
ZIRKUSBAU CANDY



TAL-75306
LORE COBBLESTONE



TAL-75307
VILLAGE ADVENTURE



FEEL THE DIFFERENCE © 2018 Courtesy of Art Gallery Quilts LLC. All Rights Reserved.



FINISHED SIZE | 40" x 50"

FABRIC REQUIREMENTS

Fabric A	TAL-75300	½ yd.
Fabric B	TAL-75305	½ yd.
Fabric C	TAL-75302	½ yd.
Fabric D	TAL-75307	½ yd.
Fabric E	TAL-75304	½ yd.
Fabric F	TAL-75303	½ yd.
Fabric G	TAL-75301	½ yd.
Fabric H	TAL-75306	¾ yd.
Fabric I	PE- 404	½ yd.
Fabric J	PE- 407	½ yd.
Fabric K	PE- 414	¼ yd.
Fabric L	PE- 403	½ yd.
Fabric M	PE- 430	¼ yd.
Fabric N	PE- 433	½ yd.

BACKING FABRIC

Fabric **G** TAL-75301 2 yds. (*Suggested*)

BINDING FABRIC

Fabric **F** TAL-75303 (*included*)

CUTTING DIRECTIONS

¼" seam allowances are included.
WOF means width of fabric.

Fabric **A**:

Cut one (1) 20 ½ x 10 ½" rectangle,
Cut one (1) 10 ½ x 5 ½" rectangle.

Fabric **B**:

Cut one (1) 20 ½ x 10 ½" rectangle,
Cut one (1) 10 ½ x 5 ½" rectangle.

Fabric **C**:

Cut one (1) 20 ½ x 10 ½" rectangle,
Cut one (1) 10 ½ x 5 ½" rectangle.

Fabric **D**:

Cut one (1) 20 ½ x 10 ½" rectangle.

Fabric **E**:

Cut two (2) 10 ½ x 10 ½" squares.
Cut one (1) 10 ½ x 5 ½" rectangle.

Fabric **F**:

Cut two (2) 10 ½ x 10 ½" squares.
Cut one (1) 10 ½ x 5 ½" rectangle.

Fabric **G**:

Cut two (2) 10 ½ x 10 ½" squares.

Fabric **H**:

Cut two (2) 10 ½ x 25 ½" rectangles.

Fabric **I**:

Cut one (1) 20 ½ x 10 ½" rectangle.
Cut one (1) 10 ½ x 5 ½" rectangle.

Fabric **J**:

Cut two (2) 10 ½ x 10 ½" squares,
Cut one (1) 10 ½ x 5 ½" rectangle.

Fabric **K**:

Cut one (1) 10 ½ x 5 ½" rectangle.

Fabric **L**:

Cut two (2) 10 ½ x 10 ½" squares,
Cut one (1) 10 ½ x 5 ½" rectangle.

Fabric **M**:

Cut one (1) 10 ½ x 5 ½" rectangle.

Fabric **N**:

Cut twenty (20) 5 ½ x 5 ½" squares.

CONSTRUCTION

Sew all rights sides together with ¼" seam allowance.

• Flying Geese construction:

- For the larger Flying Geese blocks (the center row), you'll need fabrics **A, B, C, D** and **I** rectangles 20 ½" x 10 ½", and two (2) 10 ½" x 10 ½" squares from fabrics **G, J, F, L** and **E**.
- Place a marked 10 ½" square from Fabric **G** right sides together on the left side of a 20 ½" x 10 ½" rectangle from Fabric **A** as shown.
- Stitch on the drawn line. Trim seam allowance to ¼". Press corner open. In the same manner, sew a 10 ½" square to the remaining corner, trim and press.

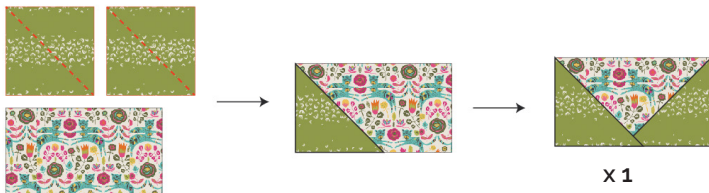
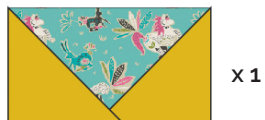


DIAGRAM 1

- Repeat flying geese construction with fabrics

B and J



- **C and F**



- **D and L**



- **I and E**

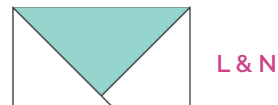
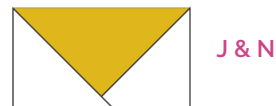
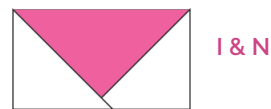


- Make one (1) each of the following Flying Geese units in the smaller size using the following fabric combinations:

- Use Fabrics **A,B,C,E,F,I,J,K,L,M** 10½" x 5½" rectangles and fabric **N** 5½" squares



XXXXXXXXXXXXXXXXXXXXXXXXXXXXXXXXXXXX



- Next you will construct (2) rows (Rows **A** and **C**) made from all your smaller Flying Geese units.
- For Row **A**, pair the **B-N** Flying Geese piece with the **A-N** piece right sides together and sew. Repeat the same process to complete the row in the following formation:
- After you finish with the flying geese row attach Fabric **H** rectangle (10½" x 25½") to the **E & N** combination.



DIAGRAM 2

- For Row **C**, repeat the process for Row **A** to make another Flying Geese row in the following formation:
- After you finish with the flying geese row attach Fabric **H** rectangle (10 ½ x 25 ½") to the **M & N** combination.. Refer to the diagram below:

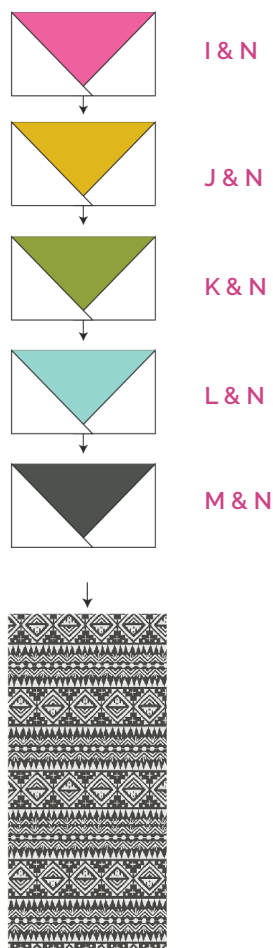


DIAGRAM 3

- You should now have a total of (2) rows sewn, made from all your smaller Flying Geese units.
- Next you'll construct the center row (Row **B**) made of the larger Flying Geese pieces. Pair the **A-G** Flying Geese piece with the **B-J** piece right sides together and sew.
- Continue sewing, right sides together, to complete the Row **B** in the following formation:

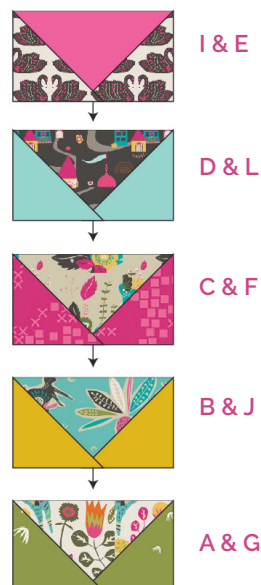


DIAGRAM 4

- Place Row **A** and Row **B** right sides together and sew.
- Next place Row **B** and Row **C** right sides together and sew.
- This completes your quilt top!

QUILT ASSEMBLY

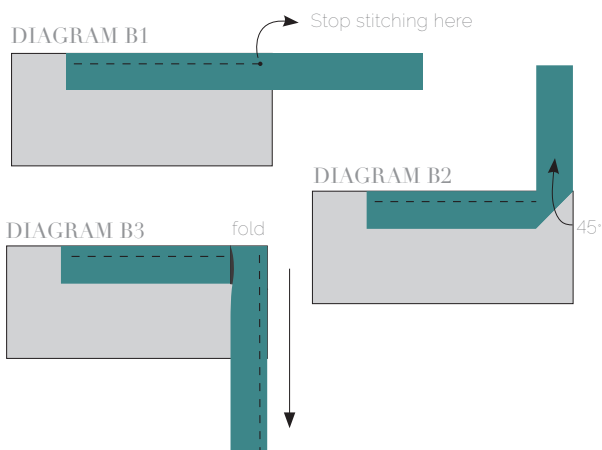
Sew rights sides together.

- Place BACKING FABRIC on a large surface wrong side up. Stretch it with masking tape against that surface.
- Place BATTING on top of backing fabric.
- Place TOP on top of the batting with right side facing up. Smooth away wrinkles using your hands.
- Pin all layers together and baste with basting thread, using long stitches. You can also use safety pins to join the layers.
- Machine or hand quilt starting at the center and working towards the corners. Remember that quilting motifs are a matter of personal preference. Have fun choosing yours!
- After you finished, trim excess of any fabric or batting, squaring the quilt to proceed to bind it.

BINDING

Sew rights sides together.

- Cut enough strips $1\frac{1}{2}$ ' wide by the width of the fabric **F** to make a final strip 265' long. Start sewing the binding strip in the middle of one of the sides of the quilt, placing the strip right side down and leaving an approximated 5' tail. Sew with $\frac{1}{4}$ ' seam allowance (using straight stitch), aligning the strip's raw edge with the quilt top's raw edge.
- Stop stitching $\frac{1}{4}$ ' before the edge of the quilt (**DIAGRAM B1**). Clip the threads. Remove the quilt from under the machine presser foot. Fold the strip in a motion of 45° and upward, pressing with your fingers (**DIAGRAM B2**). Hold this fold with your finger, bring the strip down in line with the next edge, making a horizontal fold that aligns with the top edge of the quilt (**DIAGRAM B3**). Start sewing at $\frac{1}{4}$ ' of the border, stitching all the layers. Do the same in the four corners of the quilt.



- Stop stitching before you reach the last 5 or 6 inches. Cut the threads and remove the quilt from under the machine presser foot. Lay the loose ends of the binding flat along the quilt edge, folding the ends back on themselves where they meet. Press them together to form a crease. Using this crease as the stitching line, sew the two open ends of the binding with right sides together (you can help yourself marking with a pencil if the crease is difficult to see).
- Trim seam to $\frac{1}{4}$ ' and press open. Complete the sewing. Turn binding to back of the quilt, turn raw edge inside and stitch by hand using blind stitch.
- Congrats! You've finished your Tallin Quilt!



artgalleryfabrics.com

NOTE: While all possible care has been taken to ensure the accuracy of this pattern, We are not responsible for printing errors or the way in which individual work varies.

Please read instructions carefully before starting the construction of this quilt. If desired, wash and iron your fabrics before starting to cut.