

X
X
X
X
X
X
X
X
X
X
X
X

A vibrant, multi-layered quilt square. The center features a white diamond shape containing two black swans facing each other. This is surrounded by a teal border, then a pink border with a small white dot pattern. Next is a wide black border with a white geometric pattern. This is followed by another teal border, then a pink border with a small white dot pattern. The outermost border is black with a white geometric pattern. The entire quilt square is set against a teal background. The quilt is held in place by four yellow corner weights.

XXXXXXXXXXXXXXXXXXXXXXXXXXXX

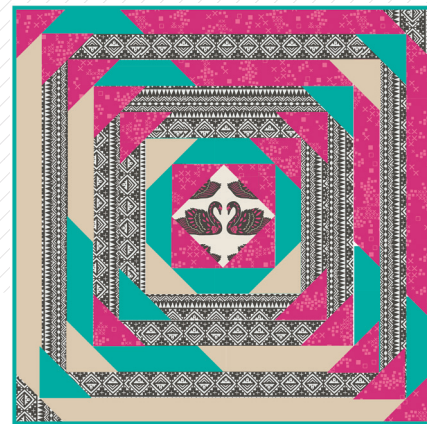
A DIVISION OF AGF

SWAN RAYS



jessica swift

QUILT DESIGNED BY ART GALLERY FABRICS

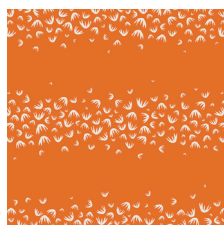


FABRICS DESIGNED BY JESSICA SWIFT

FAABULA



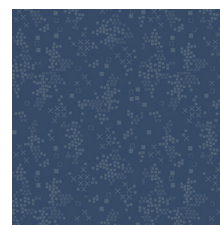
TAL-65300
TIGRIS INDIGO



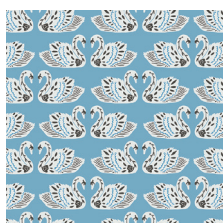
TAL-65301
MAGIJA PUMPKIN



TAL-65302
ODESSA TRADITIONALE



TAL-65303
SOFIA MIDNIGHT



TAL-65304
BALTIC SWANS SKY



TAL-65305
ZIRKUSBAU PRIMARY



TAL-65306
LORE ROOFTOP



TAL-65307
VILLAGE MEANDER

FAIRYTALE



TAL-75300
TIGRIS LOLLIPOP



TAL-75301
MAGIJA OLIVE



TAL-75302
ODESSA DREAM



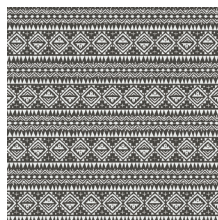
TAL-75303
SOFIA SUNRISE



TAL-75304
BALTIC SWANS SAND



TAL-75305
ZIRKUSBAU CANDY



TAL-75306
LORE COBBLESTONE



TAL-75307
VILLAGE ADVENTURE



FEEL THE DIFFERENCE © 2018 Courtesy of Art Gallery Quilts LLC. All Rights Reserved.

FINISHED SIZE | 16" x 16"

FABRIC REQUIREMENTS

Fabric A	TAL-75304	F8
Fabric B	TAL-75303	¼ yd.
Fabric C	TAL-75306	¼ yd.
Fabric D	PE-432	¼ yd.
Fabric E	PE-402	¼ yd.

BINDING FABRIC

Fabric **E** PE-402 (Included)

BACKING FABRIC

TAL-75307 FQ. (*Suggested*)

CUTTING DIRECTIONS

*1/4" seam allowances are included.
WOF means width of fabric.*

One (1) 4½" x 4½" square from fabric **A**. Center the swans in the square.

Seventeen (17) 2½" x 2½" squares from fabric **B**.

One (1) 12½" x 1½" strips from fabric **B**.

One (1) $11\frac{1}{2}$ " x $1\frac{1}{2}$ " strips from fabric **B**.

One (1) 8½" x 1½" strips from fabric **B**.

One (1) 7½" x 1½" strips from fabric **B**.

Two (2) 2½" x 2½" squares from fabric **C**.

Two (2) 14½" x 1½" strips from fabric **C**.

Two (2) 12½" x 1½" strips from fabric **C**.

Two (2) 10½" x 1½" strips from fabric **C**.

Four (4) 8½" x 1½" strips from fabric **C**.

Two (2) 6½" x 1½" strips from fabric **C**.

x x x x x x x x x x x x x x x x x x x

Five (5) 2½" x 2½" squares from fabric **D**.

One (1) 16½" x 1½" strips from fabric **D**.

One (1) 14½" x 1½" strips from fabric **D**.

One (1) 7½" x 1½" strips from fabric **D**.

One (1) 6½" x 1½" strips from fabric **D**.

Four (4) 2½" x 2½" squares from fabric **E**.

Three (3) 6½" x 1½" strips from fabric **E**.

Three (3) 5½" x 1½" strips from fabric **E**.

Four (4) 4½' x 1½" strips from fabric **E**.

CONSTRUCTION

Sew all rights sides together with 1/4" seam allowance.

- Take one (1) $4\frac{1}{2}$ x $4\frac{1}{2}$ " square from fabric **A** and four (4) $2\frac{1}{2}$ x $2\frac{1}{2}$ " squares from fabric **B**.
- Place one square from fabric **B** face to face with the square from fabric **A**, and aligned to one corner.
- Stitch on the diagonal.
- Trim at $\frac{1}{4}$ " from the stitch.
- Open and press.
- Repeat the process in all the other three (3) corners.



DIAGRAM 1

- Take two (2) $4\frac{1}{2}'' \times 1\frac{1}{2}''$ strips from fabric **E** and two (2) $6\frac{1}{2}'' \times 1\frac{1}{2}''$ strips from fabric **E**.
- Join them to the block.
- Take three (3) $2\frac{1}{2}'' \times 2\frac{1}{2}''$ squares from fabric **D** and one (1) $2\frac{1}{2}'' \times 2\frac{1}{2}''$ square from fabric **D**.
- Do corner square triangles.
- For fabric placement and attachment follow Diagram 2.

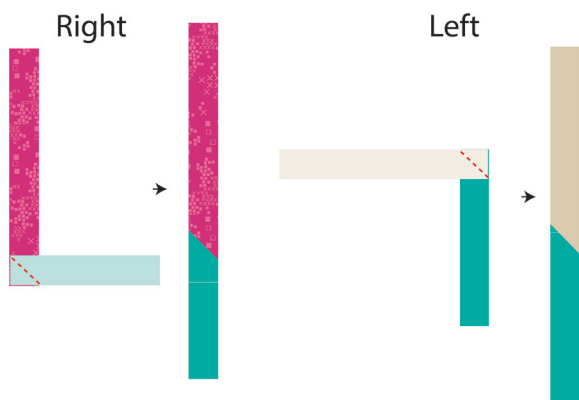


DIAGRAM 8

- Join the strips to the block.
- Take two (2) $2\frac{1}{2}$ " x $2\frac{1}{2}$ " squares from fabric **B** and two (2) $2\frac{1}{2}$ " x $2\frac{1}{2}$ " squares from fabric **D**.
- Do corner square triangles.

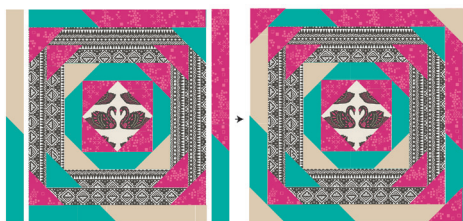


DIAGRAM 9

- Take two (2) $12\frac{1}{2}$ " x $1\frac{1}{2}$ " strips from fabric **C** and two (2) $14\frac{1}{2}$ " x $1\frac{1}{2}$ " strips from fabric **C**.
- Join them to the block.
- Take two (2) $2\frac{1}{2}$ " x $2\frac{1}{2}$ " squares from fabric **B** and two (2) $2\frac{1}{2}$ " x $2\frac{1}{2}$ " squares from fabric **E**.
- Do corner square triangles.
- For fabric placement and attachment follow Diagram 10.



DIAGRAM 10

Top Side:

- Take one (1) $11\frac{1}{2}$ " x $1\frac{1}{2}$ " strip from fabric **B** and one (1) $4\frac{1}{2}$ " x $1\frac{1}{2}$ " strip from fabric **E**.
- Place them in L face to face, stitch on the diagonal, open, and press.



DIAGRAM 11

- Take one (1) $14\frac{1}{2}$ " from fabric **D**.
- Join both pieces to the block:

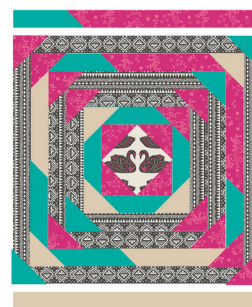


DIAGRAM 12

Right Side:

- Take one (1) $12\frac{1}{2}$ " x $1\frac{1}{2}$ " strip from fabric **B** and one (1) $5\frac{1}{2}$ " x $1\frac{1}{2}$ " strip from fabric **E**.
- Place them in L face to face, stitch on the diagonal, open, and press.



DIAGRAM 13



artgalleryfabrics.com

NOTE: While all possible care has been taken to ensure the accuracy of this pattern, We are not responsible for printing errors or the way in which individual work varies.

Please read instructions carefully before starting the construction of this quilt. If desired, wash and iron your fabrics before starting to cut.

© 2018 Courtesy of Art Gallery Quilts LLC. All Rights Reserved.