

X  
X  
X  
X  
X  
X  
X  
X  
X  
X  
X  
X

## A large, colorful quilt with a wavy white background and a purple border. The quilt features various patterns including floral, geometric, and solid colors. It is decorated with applique designs of cars, trucks, and a penguin. The quilt is displayed on a wooden surface, flanked by small potted plants.

XXXXXXXXXXXXXXXXXXXXXXXXXXXX

A DIVISION OF AGF



# PANAMERICA

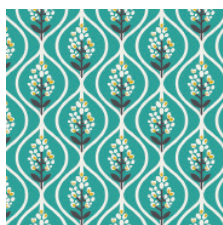
QUILT DESIGNED BY AGF STUDIO



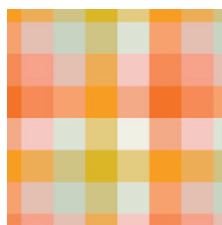
FABRICS DESIGNED BY DANA WILLARD



SUMMER PICNIC



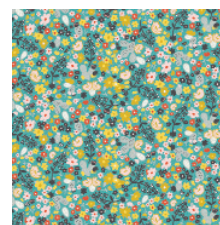
DAI-89400  
BLUEBONNET DUSK



DAI-89401  
PICNIC PLAID



DAI-89403  
CACTUS BLOOM NOON



DAI-89404  
SUMMER FIELD



DAI-89405  
TACO LOVE LIGHT



DAI-89406  
JOYRIDE NIGHT

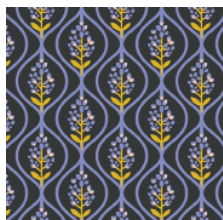


DAI-89407  
SCATTERED SHOWERS WARM



DAI-89408  
PRICKLY

WINTER BREAK



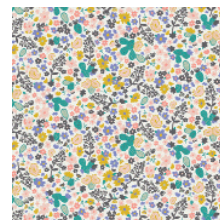
DAI-99400  
BLUEBONNET MIDNIGHT



DAI-99402  
GRAZING GOATS



DAI-99403  
CACTUS BLOOM MOONLIGHT



DAI-99404  
WINTER FIELD



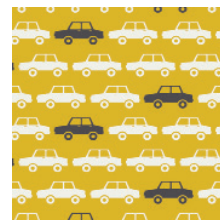
DAI-99405  
TACO LOVE BRIGHT



DAI-99406  
JOYRIDE DAY



DAI-99407  
SCATTERED SHOWERS COOL



DAI-99409  
PARALLEL PARKING



FEEL THE DIFFERENCE

2018 Courtesy of Art Gallery Quilts LLC. All Rights Reserved.

# PANAMERICA

FINISHED SIZE | 60" x 80"

## FABRIC REQUIREMENTS

Fabric <b>A</b>	DAT-89400	$\frac{3}{8}$ yd.
Fabric <b>B</b>	DAT-89401	$\frac{1}{4}$ yd.
Fabric <b>C</b>	DAT-89403	$\frac{1}{4}$ yd.
Fabric <b>D</b>	DAT-89404	$\frac{3}{8}$ yd.
Fabric <b>E</b>	DAT-89406	$\frac{3}{8}$ yd.
Fabric <b>F</b>	DAT-89407	$\frac{1}{4}$ yd.
Fabric <b>G</b>	DAT-89408	1 $\frac{1}{4}$ yd.
Fabric <b>H</b>	DAT-99400	$\frac{1}{4}$ yd.
Fabric <b>I</b>	DAT-99402	$\frac{1}{2}$ yd.
Fabric <b>J</b>	DAT-99403	$\frac{1}{4}$ yd.
Fabric <b>K</b>	DAT-99404	$\frac{3}{8}$ yd.
Fabric <b>L</b>	DAT-99407	$\frac{1}{4}$ yd.
Fabric <b>M</b>	PE- 433	1 $\frac{5}{8}$ yd.
Fabric <b>N</b>	PE- 402	$\frac{3}{8}$ yd.
Fabric <b>O</b>	DEN-S-2007	$\frac{3}{8}$ yd.

### BACKING FABRIC

DAT-89407 4  $\frac{1}{2}$  yds. *(Suggested)*

### BINDING FABRIC

DAT-89406 - (Fabric **E**) *(included)*

## CUTTING DIRECTIONS

$\frac{1}{4}$ " seam allowances are included.  
WOF means width of fabric.

### Fabric **A**

Four (4) 2.5" x 28.5" strips

One (1) 2.5" x 26" strip

Nine (9) 2.5" squares

### Fabric **B**

One (1) 2.5" x 26" strip

Two (2) 2.5" x 23.5" strips

One (1) 2.5" x 21" strip

Twelve (12) 2.5" squares

Two (2) Bug Templates\*

### Fabric **C**

One (1) 2.5" x 26" strip

One (1) 2.5" x 18.5" strip

One (1) 2.5" x 24.5" strip

One (1) 2.5" x 21" strip

Twelve (12) 2.5" squares

### Fabric **D**

Three (3) 2.5" x 28.5" strips

Two (2) 2.5" x 26" strips

Twenty-five (25) 2.5" squares

### Fabric **F**

One (1) Van Template\*

One (1) Bug Template\*

One (1) Convertible Template\*

### Fabric **G**

Three (3) 2.5" x WOF strips

Three (3) 2.5" x 33.5" strips

Two (2) 2.5" x 21" strips

Three (3) 2.5" x 18.5" strips

Nine (9) 6" squares

Forty-five (45) 2.5" squares

### Fabric **H**

(1) Van Template\*

(2) Convertible Template\*

### Fabric **I**

Three (3) 2.5" x WOF strips

Three (3) 2.5" x 33.5" strips

Three (3) 2.5" x 21" strips

One (1) 2.5" x 18.5" strip

Nine (9) 6" squares

Twenty-four (24) 2.5" squares

### Fabric **J**

(1) Van Template\*

(1) Bug Template\*

### Fabric **K**

One (1) 2.5" x 26" strip

Three (3) 2.5" x 23.5" strips

One (1) 2.5" x 21" strip

One (1) 2.5" x 18.5" strips

Twenty (20) 2.5" squares

## Fabric L

Three (3) Van Templates\*

## Fabric M

Three (3) 12.5" x WOF strips

-subcut into fourteen (14) 8.5" x 12.5" rectangles

Seven (7) 2.5" x WOF strips pieced together and cut into:

Two (2) 2.5" x 80.5" strips

Two (2) 2.5" x 56.5" strips

## Fabric N

Five (5) 2.5" x 27.5" strips

Nine (9) 2.5" squares

## Fabric O

Nine (9) 6" squares

\*Make sure car is facing the correct direction before cutting. (see diagram) If using double-sided fusible, rough cut the fabric first and then cut according to manufacturer instructions.

## CONSTRUCTION

*Sew all rights sides together with 1/4" seam allowance.*

### Making HST

- Using the 8 HST at a time method pair the Fabric G 6" squares with the Fabric O 6" squares to make 9 G/O pairs. Sew & cut apart. Place 5 aside for use with another project and press and square the other 67 HST.
- Sew 2 together to make 31 pairs. Leave the rest unpaired.



### 8 at a Time Method

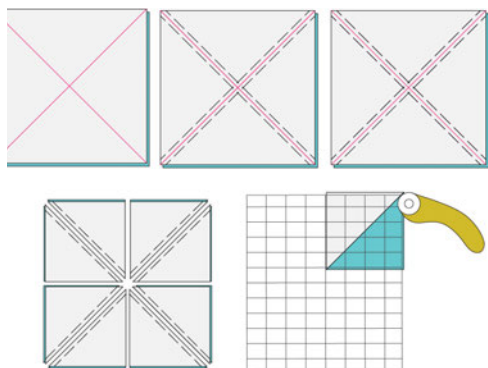


DIAGRAM 1

### Car Blocks

- You will need (13) 2.5" Fabric G squares, (14) 2.5" Fabric D squares.
- Mark the squares along the diagonal, line up the edges with the edges of a Fabric M rectangle, right sides together. Sew along the diagonal and trim seam to 1/4". Press the corner open.
- Refer to the diagrams below for corner block placement.

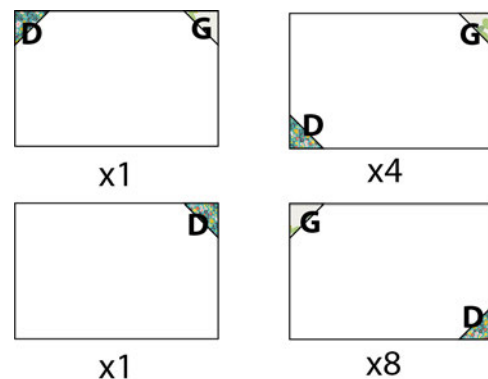


DIAGRAM 2

- Now, appliqué your cars to the corresponding blocks as shown, be sure to double check corners and that the car is facing the correct direction.
- Alternatively: Make the wheels a different color or add 3D curtains to the vans, car decals, peace sign embroidery, etc. Feel free to personalize this step.

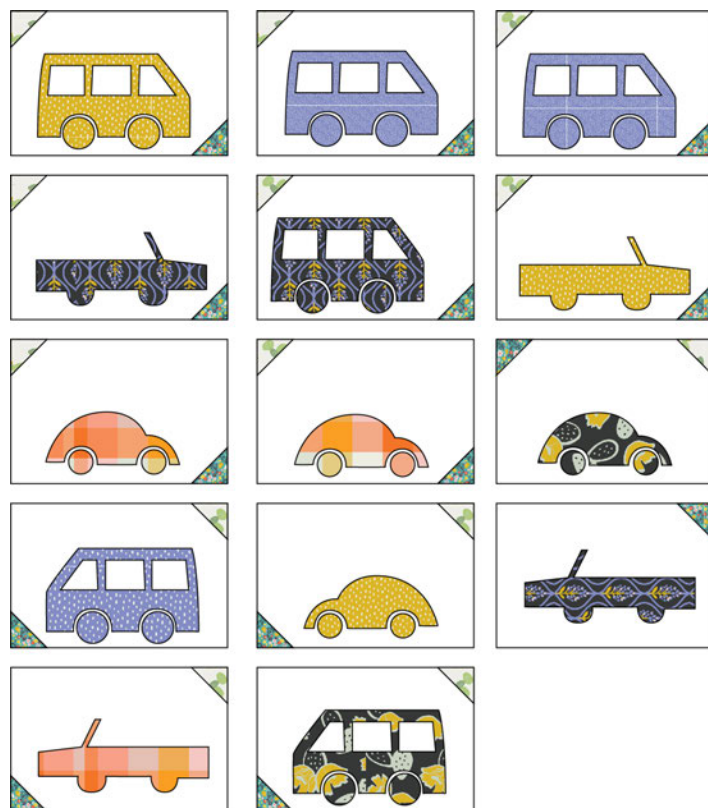


DIAGRAM 3



## Strip Sets

- We will be sewing strips together along their length, pressing and then cutting every 2 1/2". Sew together the strips in the fabric order given.

### Making a Strip Set

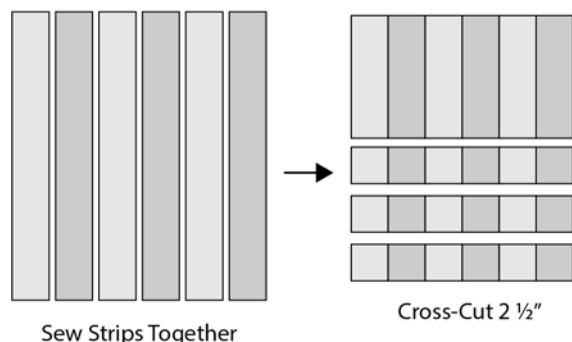


DIAGRAM 4

Strip Set A- Use 28 1/2" long strips

Fabric D > A > O > D > A > O

Make 11



Strip Set B- Use 27 1/2" long strips

Fabric A > O > D > O > A > O

Make 11



Strip Set C- Use 25" long strips

Fabric D > A > D > C > K > B

Makes 10



Strip Set D- Use 22 1/2" long strips

Fabric K > B > K > B > C > K

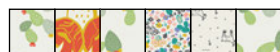
Makes 9



Strip Set E- Use 17 1/2" long strips

Fabric G > C > G > K > I > G

Makes 7



Strip Set F- Use 20" long strips

Fabric B > K > I > G > C > I

Makes 8



Strip Set G- Use 32 1/2" long strips

Fabric G > I > G > I > G > I

Makes 13



Strip Set H- Use WOF strips

Fabric G > I > G > I

Makes 17



Strip Set I- Use WOF strips 1 set, 21" strips for second set

Fabric G > I

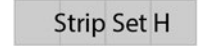
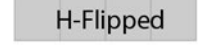
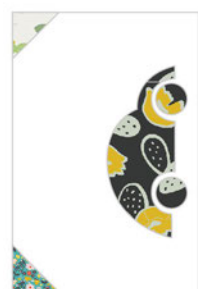
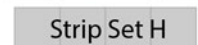
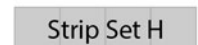
Makes 25



## Column Assembly

Refer to the column assembly diagrams to sew together the pieced strips, automobile blocks, HSTs and individual 2 1/2" squares into columns. Some strip sets are flipped upside down to give a different fabric order and are marked as "flip" on column diagrams.

### Column 1



### Column 2

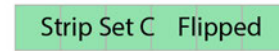


DIAGRAM 5

Column 3

Strip Set H

H- Flipped

Strip Set A

Strip Set B

Strip Set C

Strip Set D

Strip Set E

Strip Set F

Strip Set A

Strip Set B

Strip Set C

Strip Set D

Strip Set E

Strip Set F

Strip Set A

Strip Set B

Strip Set C

Strip Set D

Strip Set E

Strip Set F

Column 4

I

G

I-Flip

Strip Set A

Strip Set B

Strip Set C

Strip Set D

Strip Set E

Strip Set F

Strip Set G

I

G

I

G

I

G

I-Flip

Strip Set A

Strip Set B

Strip Set C

Strip Set D

Strip Set E

Strip Set F

Strip Set G

Column 5

Strip Set A

Strip Set B

Strip Set C

Strip Set D

Strip Set E

Strip Set F

Strip Set G

Strip Set H

G

I

I

G

I

G

I-Flip

Strip Set G

I-Flip

I

G

Column 6

G

I

Set I

H- Flipped

Strip Set H

Set G- Flipped

I-Flip

Set I

I-Flip

Strip Set G

I-Flip

I

G

Set I

I-Flip

Strip Set A

Strip Set B

Strip Set C

Strip Set D

Column 7

Strip Set G

H- Flipped

G

I

Set I

I-Flip

Strip Set G

Strip Set H

G

Strip Set G

Strip Set H

Set I

I

G

Set I

I-Flip

Strip Set A

Strip Set B

Strip Set C

Strip Set D

Strip Set E

Strip Set F



XXXXXXXXXXXXXXXXXXXX

Column 8

K G C G B K

Set I K B K C

Set G- Flipped

Strip Set H G C

I G I-Flip

G I I

Strip Set A

Strip Set B

Strip Set C

Strip Set D

Strip Set E

Strip Set F

Strip Set G

H- Flipped

Column 9

C D A D A N

B K B K A N

Set I K C G K B

K G C G K B

Set I K B C K

Strip Set A

Strip Set B

Strip Set C

Strip Set D

Strip Set E

Strip Set F

Strip Set G

H- Flipped

G I Set I

I G I-Flip

Column 10

D A N D

A N D N

D A D C

K C B K

G C G K

B K I G

Strip Set H

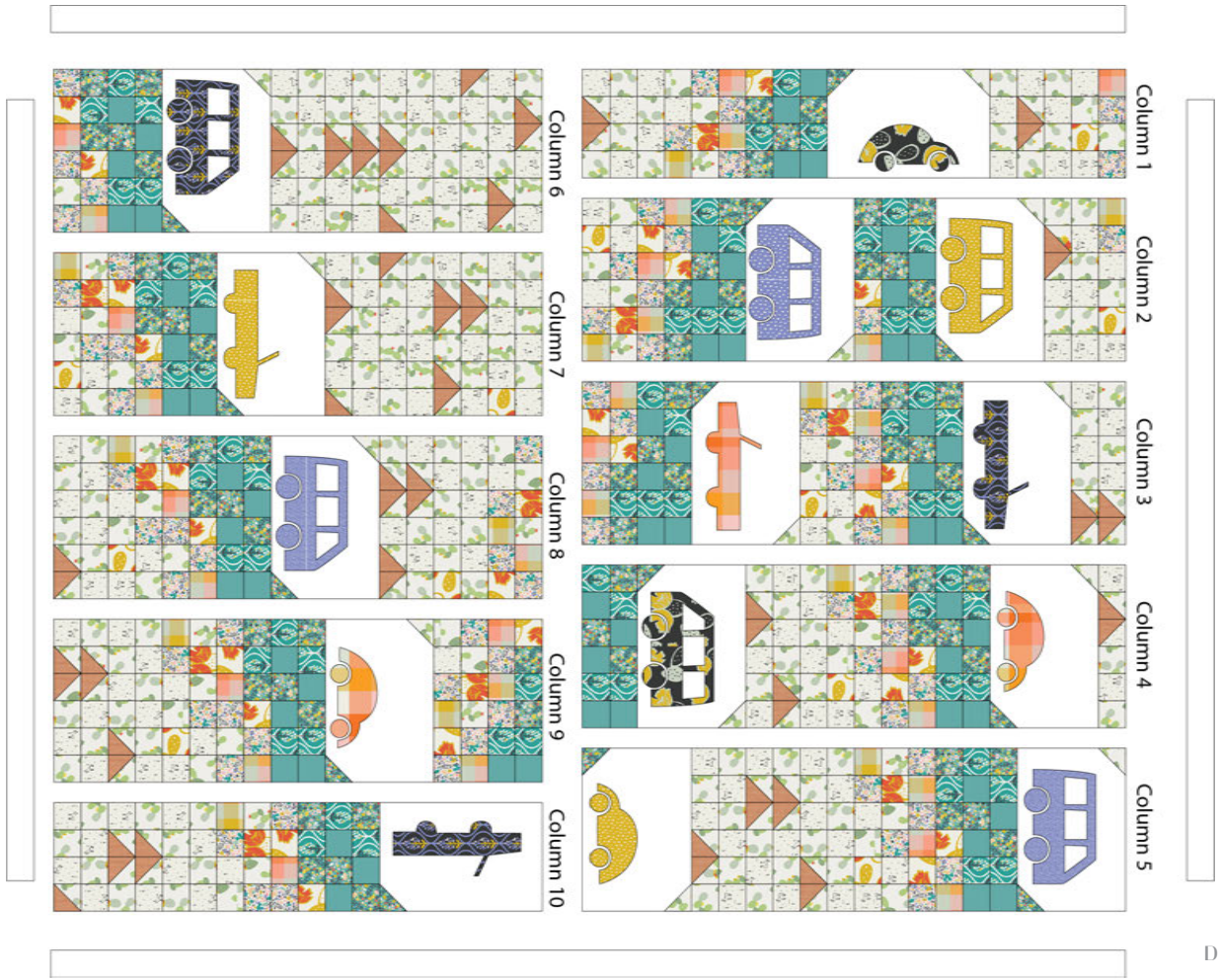
H-Flipped

G I

Strip Set H

I Set I

Quilt Top Assembly Diagram



## ASSEMBLING THE QUILT TOP

*Sew all rights sides together with  $\frac{1}{4}$ " seam allowance. Press open.*

- Refer to the quilt top assembly diagram to sew columns 1-5 together into the top half and columns 6-10 into the bottom half. Then sew the Fabric M strips 56  $\frac{1}{2}$ " to the top and bottom and the 80  $\frac{1}{2}$ " to the sides and you've finished your quilt top!

## QUILT ASSEMBLY

Cut Backing Fabric into 2 equal rectangles, each 2  $\frac{1}{4}$  yd. x WOF. Trim off selvage edges and sew them together along this lengthwise edge, right sides together. Press open the seam.

Place BACKING FABRIC on a large surface wrong side up. Stretch it with masking tape against that surface.

Place BATTING on top of backing fabric.

Place TOP on top of the batting with right side facing up. Smooth away wrinkles using your hands.

Pin all layers together and baste with basting thread, using long stitches. You can also use safety pins to join the layers.

Machine or hand quilt starting at the center and working towards the corners. Remember that quilting motifs are a matter of personal preference. Have fun choosing yours!

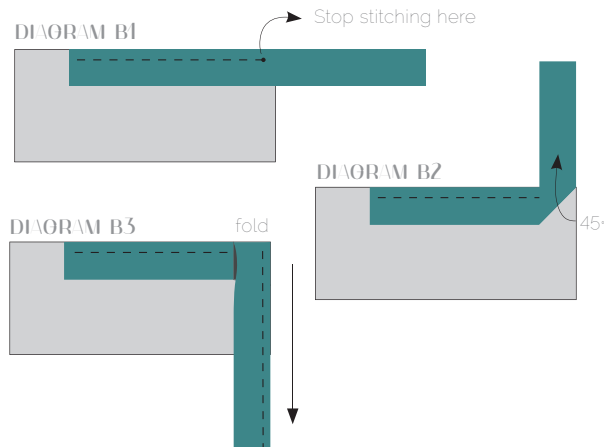
After you finished, trim excess of any fabric or batting, squaring the quilt to proceed to bind it.

## BINDING

*Sew rights sides together.*

- Cut enough strips 1 $\frac{1}{2}$ " wide by the width of the fabric **G** to make a final strip 242" long. Start sewing the binding strip in the middle of one of the sides of the quilt, placing the strip right side down and leaving an approximated 5" tail. Sew with  $\frac{1}{4}$ " seam allowance (using straight stitch), aligning the strip's raw edge with the quilt top's raw edge.

Stop stitching  $\frac{1}{4}$ " before the edge of the quilt (**DIAGRAM B1**). Clip the threads. Remove the quilt from under the machine presser foot. Fold the strip in a motion of 45° and upward, pressing with your fingers (**DIAGRAM B2**). Hold this fold with your finger, bring the strip down in line with the next edge, making a horizontal fold that aligns with the top edge of the quilt (**DIAGRAM B3**). Start sewing at  $\frac{1}{4}$ " of the border, stitching all the layers. Do the same in the four corners of the quilt.



Stop stitching before you reach the last 5 or 6 inches. Cut the threads and remove the quilt from under the machine presser foot. Lay the loose ends of the binding flat along the quilt edge, folding the ends back on themselves where they meet. Press them together to form a crease. Using this crease as the stitching line, sew the two open ends of the binding with right sides together (you can help yourself marking with a pencil if the crease is difficult to see).

Trim seam to  $\frac{1}{4}$ " and press open. Complete the sewing. Turn binding to back of the quilt, turn raw edge inside and stitch by hand using blind stitch.

Congrats! You've finished your PanAmerica Quilt!



**NOTE:** While all possible care has been taken to ensure the accuracy of this pattern, We are not responsible for printing errors or the way in which individual work varies.

2018 Courtesy of Art Gallery Quilts LLC.



