

This image displays a highly detailed and colorful quilt block. The central motif is a complex geometric star or snowflake shape, primarily composed of yellow and light blue segments. This central design is surrounded by a wide border made of concentric rings of various patterns. The first ring consists of dark blue and black geometric shapes. The second ring features a dense floral pattern with red, white, and green flowers. The third ring is made of green and black geometric shapes. The outermost ring is a wide border with a repeating pattern of small red and white flowers. The entire quilt block is set against a background of a dense, repeating floral pattern in red, white, and green.



XXXXXXXXXXXXXXXXXXXXXXXXXXXX

Coquet

QUILT DESIGNED BY AGF STUDIO AGFstudio



Splendid FUSION

FABRICS DESIGNED BY AGF STUDIO



FUS-SD-1100
COQUET BOUQUET SPLENDID



FUS-SD-1101
CROSSTHREAD SPLENDID



FUS-SD-1102
FLOWERED MEDLEY SPLENDID



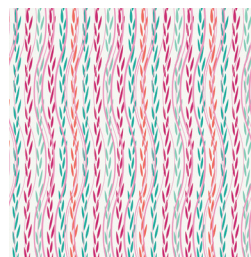
FUS-SD-1103
SHORE REMAINS SPLENDID



FUS-SD-1104
SUNSWEPT CANYON SPLENDID



FUS-SD-1105
NESTING BLOOMS SPLENDID



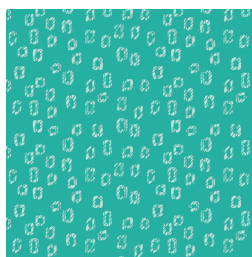
FUS-SD-1106
LEAFY RIBBONS SPLENDID



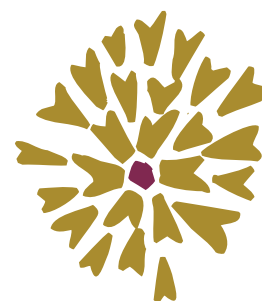
FUS-SD-1107
GARDEN GROUNDS SPLENDID



FUS-SD-1108
PETALLY SPLENDID



FUS-SD-1109
WOODBLOCK SPLENDID



FEEL THE DIFFERENCE © 2018 Courtesy of Art Gallery Quilts LLC. All Rights Reserved.



Fabric A	FUS-SD-1108	2¼ yd.
Fabric B	FUS-SD-1102	1½ yd.
Fabric C	FUS-SD-1103	1¾ yd.
Fabric D	FUS-SD-1109	1⅝ yd.
Fabric E	FUS-SD-1101	½ yd.
Fabric F	FUS-SD-1107	⅓ yd.
Fabric G	PE-428	⅞ yd.
Fabric H	PE-407	1 yd.
Fabric I	PE-451	⅓ yd.

Fabric **C** FUS-SD-1103 (*Included*)

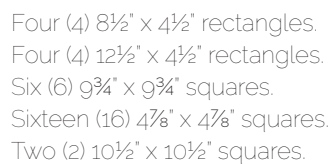
FUS-SD-1109 (*Recommended*) 5 yds.

*1/4" seam allowances are included.
WOF means width of fabric.*

Thirty six (36) $4\frac{1}{2}" \times 4\frac{1}{2}"$ squares.
Four (4) $12\frac{1}{2}" \times 4\frac{1}{2}"$ rectangles.
Four (4) $16\frac{1}{2}" \times 4\frac{1}{2}"$ rectangles.
Ten (10) $9\frac{3}{4}" \times 9\frac{3}{4}"$ squares.
Two (2) $10\frac{1}{2}" \times 10\frac{1}{2}"$ squares.
Eight (8) $5\frac{1}{4}" \times 5\frac{1}{4}"$ squares.

Twenty four (24) $4\frac{1}{2}" \times 4\frac{1}{2}"$ squares.
Four (4) $12\frac{1}{2}" \times 4\frac{1}{2}"$ rectangles.
Four (4) $16\frac{1}{2}" \times 4\frac{1}{2}"$ rectangles.
Three (3) $9\frac{3}{4}" \times 9\frac{3}{4}"$ squares.
Two (2) $10\frac{1}{2}" \times 10\frac{1}{2}"$ squares.

Four (4) $4\frac{1}{2}" \times 4\frac{1}{2}"$ squares.
Four (4) $8\frac{1}{2}" \times 4\frac{1}{2}"$ rectangles.
Six (6) $9\frac{3}{4}" \times 9\frac{3}{4}"$ squares.
Sixteen (16) $4\frac{7}{8}" \times 4\frac{7}{8}"$ squares.
Two (2) $10\frac{1}{2}" \times 10\frac{1}{2}"$ squares.



Twelve (12) $4\frac{1}{2}" \times 4\frac{1}{2}"$ squares.
Eight (8) $5\frac{1}{4}" \times 5\frac{1}{4}"$ squares.

Four (4) $4\frac{1}{2}" \times 4\frac{1}{2}"$ squares.
One (1) $9\frac{3}{4}" \times 9\frac{3}{4}"$ squares.

Four (4) $8\frac{1}{2}" \times 4\frac{1}{2}"$ rectangles.
Four (4) $9\frac{3}{4}" \times 9\frac{3}{4}"$ squares.

Four (4) $8\frac{1}{2}'' \times 4\frac{1}{2}''$ rectangles.
Four (4) $12\frac{1}{2}'' \times 4\frac{1}{2}''$ rectangles.
Two (2) $9\frac{3}{4}'' \times 9\frac{3}{4}''$ squares.
Eight (8) $4\frac{7}{8}'' \times 4\frac{7}{8}''$ squares.
Eight (8) $5\frac{1}{4}'' \times 5\frac{1}{4}''$ squares.

Four (4) 9³/₄" x 9³/₄" squares.

Sew all rights sides together with 1/4" seam allowance.

- Take ten (10) $9\frac{3}{4}" \times 9\frac{3}{4}"$ squares from fabric **A**, three (3) $9\frac{3}{4}" \times 9\frac{3}{4}"$ squares from fabric **B**, six (6) $9\frac{3}{4}" \times 9\frac{3}{4}"$ squares from fabrics **C** and **D**, one (1) $9\frac{3}{4}" \times 9\frac{3}{4}"$ square from fabric **F**, four (4) $9\frac{3}{4}" \times 9\frac{3}{4}"$ squares from fabrics **G** and **I**, and two (2) $9\frac{3}{4}" \times 9\frac{3}{4}"$ squares from fabric **H**.

We will be starting by applying the *Four Half Squares Triangles (HSTs) at a time* technique:

- Take one pair of $9\frac{3}{4}$ " x $9\frac{3}{4}$ " squares and place the fabrics face to face.
- Draw two lines on the diagonal and stitch at $\frac{1}{4}$ " from each side of each line.
- Cut following the red lines.
- Open and press.
- You should get eight (8) $4\frac{1}{2}$ " x $4\frac{1}{2}$ " half square triangles.

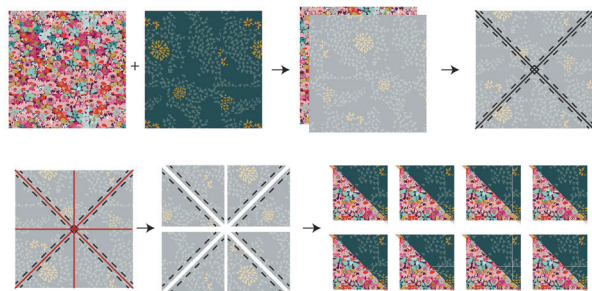


DIAGRAM 1

- Place the squares in the following way to get $4\frac{1}{2}$ " x $4\frac{1}{2}$ " squares.

3 BC = 24

3 AC = 24

6 AD = 48

1 AG = 8

2 HI = 16

2 GI = 16

1 GF = 8

DIAGRAM 2

- Take two (2) $10\frac{1}{2}$ " x $10\frac{1}{2}$ " squares from fabrics **A**, **B**, **C**, and **D**.
- Using the *Four Half Squares Triangles (HSTs) at a time* technique, pair the squares in the following way to get $4\frac{7}{8}$ " x $4\frac{7}{8}$ " HST:

1 BD = 8

1 AD = 8

1 BC = 8

1 AC = 8

DIAGRAM 3

- Take sixteen (16) $4\frac{7}{8}$ " x $4\frac{7}{8}$ " squares from fabrics **C** and **D**.
- Pair them with the $4\frac{7}{8}$ " x $4\frac{7}{8}$ " HSTs following the diagram to get $4\frac{1}{2}$ " x $4\frac{1}{2}$ " HST.
- Make sure to draw and stitch on the diagonal that crosses both fabrics.

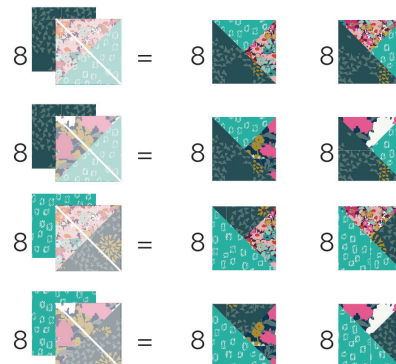


DIAGRAM 4

- Take eight (8) $5\frac{1}{4}$ " x $5\frac{1}{4}$ " squares from fabrics **A**, **E**, **G**, and **H**.

We will be making a *Half Square Triangle (HST)* technique:

- Place the squares face to face.
- Draw a diagonal line and stitch at $\frac{1}{4}$ " from each side.
- Trim on the drawn line.
- Open and press the resulting two HSTs.

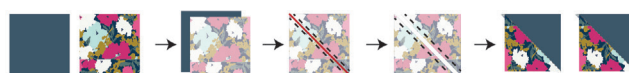


DIAGRAM 5

- Pair the squares in the following way to get $4\frac{7}{8}$ " x $4\frac{7}{8}$ " HSTs:

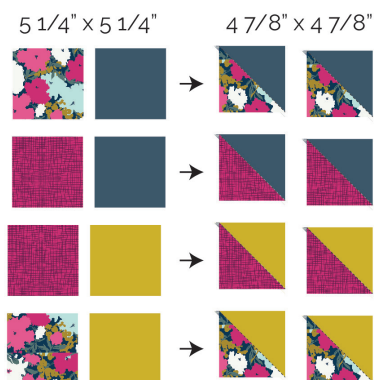


DIAGRAM 6

- Take eight (8) $4\frac{7}{8}" \times 4\frac{7}{8}"$ squares from fabrics **G** and **H** and pair them following the diagram with the $4\frac{7}{8}" \times 4\frac{7}{8}"$ HSTs to get $4\frac{1}{2}" \times 4\frac{1}{2}"$ HSTs.
- Make sure to draw and stitch on the diagonal that crosses both fabrics.

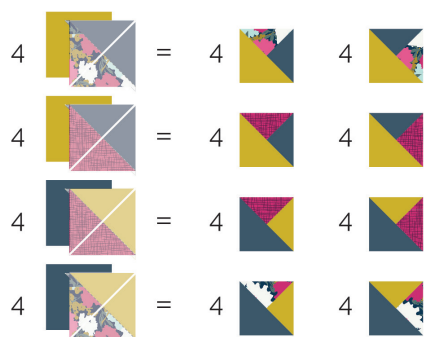


DIAGRAM 7

Block A:

- Take four (4) $16\frac{1}{2}" \times 4\frac{1}{2}"$ rectangles from fabric **B**, four (4) $12\frac{1}{2}" \times 4\frac{1}{2}"$ rectangles from fabrics **B** and **D**, four (4) $8\frac{1}{2}" \times 4\frac{1}{2}"$ rectangles from fabric **D** and **C**, and four (4) $4\frac{1}{2}" \times 4\frac{1}{2}"$ squares from fabrics **A** and **C**.
- For fabric placement and attachment follow Diagram 8. Make four (4) blocks:



DIAGRAM 8

Block B:

- Take twelve (12) $4\frac{1}{2}" \times 4\frac{1}{2}"$ squares from fabrics **A** and **B**, and the HSTs following the diagram.
- For fabric placement and attachment follow Diagram 9. Make six (6) blocks:

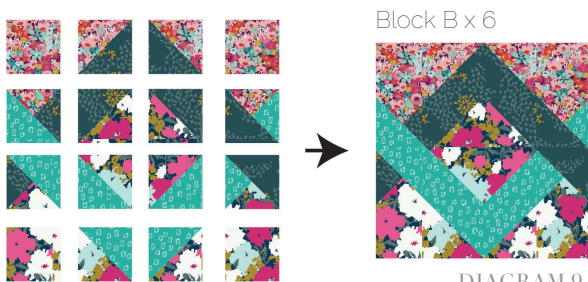


DIAGRAM 9

Block C:

- Take four (4) $4\frac{1}{2}" \times 4\frac{1}{2}"$ squares from fabrics **A** and **B**, and the HSTs following the diagram.
- For fabric placement and attachment follow Diagram 10. Make two (2) blocks:

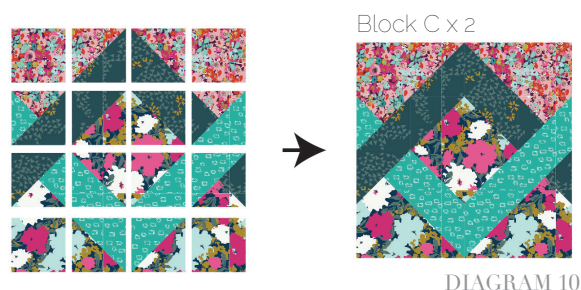


DIAGRAM 10

Block D:

- Take four (4) $4\frac{1}{2}" \times 4\frac{1}{2}"$ squares from fabrics **A** and **B**, and the HSTs following the diagram.
- For fabric placement and attachment follow Diagram 11. Make two (2) blocks:

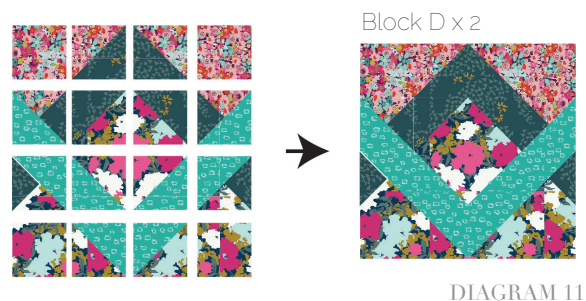


DIAGRAM 11

Block E:

- Take four (4) $4\frac{1}{2}" \times 4\frac{1}{2}"$ squares from fabrics **A** and **B**, and the HSTs following the diagram.
- For fabric placement and attachment follow Diagram 12. Make two (2) blocks:

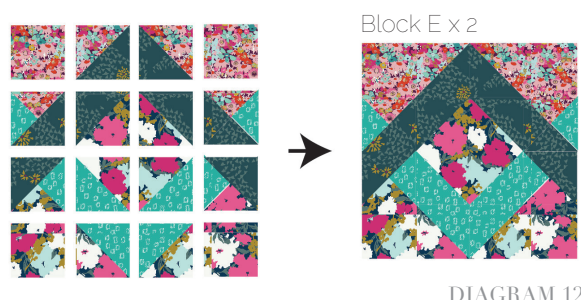


DIAGRAM 12

Block F:

- Take four (4) $16\frac{1}{2}" \times 4\frac{1}{2}"$ rectangles from fabric **A**, four (4) $12\frac{1}{2}" \times 4\frac{1}{2}"$ rectangles from fabrics **A** and **H**, four (4) $8\frac{1}{2}" \times 4\frac{1}{2}"$ rectangles from fabric **H** and **G**, and four (4) $4\frac{1}{2}" \times 4\frac{1}{2}"$ squares from fabrics **G** and **F**.
- For fabric placement and attachment follow Diagram 13. Make four (4) blocks:

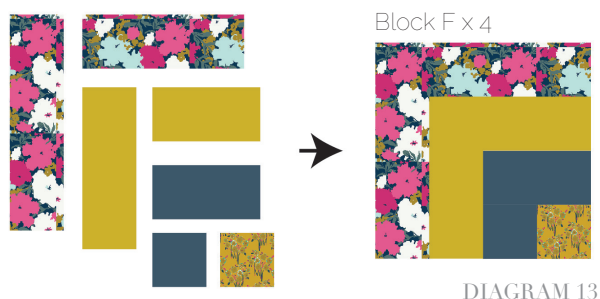


DIAGRAM 13

Block G:

- Take eight (8) $4\frac{1}{2}" \times 4\frac{1}{2}"$ squares from fabrics **A** and **E**, and the HSTs following the diagram.
- For fabric placement and attachment follow Diagram 14. Make four (4) blocks:

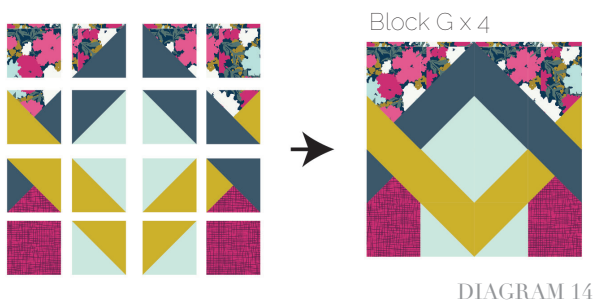


DIAGRAM 14

Block H:

- Take four (4) $4\frac{1}{2}" \times 4\frac{1}{2}"$ squares from fabric **E**, and the HSTs following the diagram.
- For fabric placement and attachment follow Diagram 15. Make four (4) blocks:

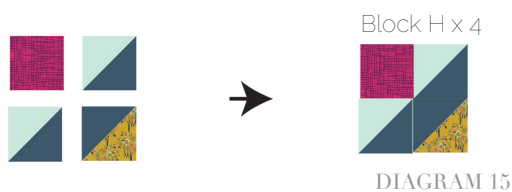


DIAGRAM 15

TOP ASSEMBLY

*$\frac{1}{4}"$ seam allowances are included.
WOF means width of fabric.*

- Join the blocks as follows:

A	B	B	B	A
E	F	G	F	B
C	G	HH	G	B
D	F	G	F	B
A	E	C	D	A



DIAGRAM 16

QUILT ASSEMBLY

Sew rights sides together.

- Place BACKING FABRIC on a large surface wrong side up. Stretch it with masking tape against that surface.
- Place BATTING on top of backing fabric.
- Place TOP on top of the batting with right side facing up. Smooth away wrinkles using your hands.
- Pin all layers together and baste with basting thread, using long stitches. You can also use safety pins to join the layers.
- Machine or hand quilt starting at the center and working towards the corners. Remember that quilting motifs are a matter of personal preference. Have fun choosing yours!
- After you finished, trim excess of any fabric or batting, squaring the quilt to proceed to bind it.

BINDING

Sew rights sides together.

- Cut enough strips $1\frac{1}{2}$ ' wide by the width of the fabric **C** to make a final strip 330' long. Start sewing the binding strip in the middle of one of the sides of the quilt, placing the strip right side down and leaving an approximated 5' tail. Sew with $\frac{1}{4}$ ' seam allowance (using straight stitch), aligning the strip's raw edge with the quilt top's raw edge.
- Stop stitching $\frac{1}{4}$ ' before the edge of the quilt (**DIAGRAM B1**). Clip the threads. Remove the quilt from under the machine presser foot. Fold the strip in a motion of 45° and upward, pressing with your fingers (**DIAGRAM B2**). Hold this fold with your finger, bring the strip down in line with the next edge, making a horizontal fold that aligns with the top edge of the quilt (**DIAGRAM B3**). Start sewing at $\frac{1}{4}$ ' of the border, stitching all the layers. Do the same in the four corners of the quilt.
- Stop stitching before you reach the last 5 or 6 inches. Cut the threads and remove the quilt from under the machine presser foot. Lay the loose ends of the binding flat along the quilt edge, folding the ends back on themselves where they meet. Press them together to form a crease. Using this crease as the stitching line, sew the two open ends of the binding with right sides together (you can help yourself marking with a pencil if the crease is difficult to see).
- Trim seam to $\frac{1}{4}$ ' and press open. Complete the sewing. Turn binding to back of the quilt, turn raw edge inside and stitch by hand using blind stitch.

DIAGRAM B1

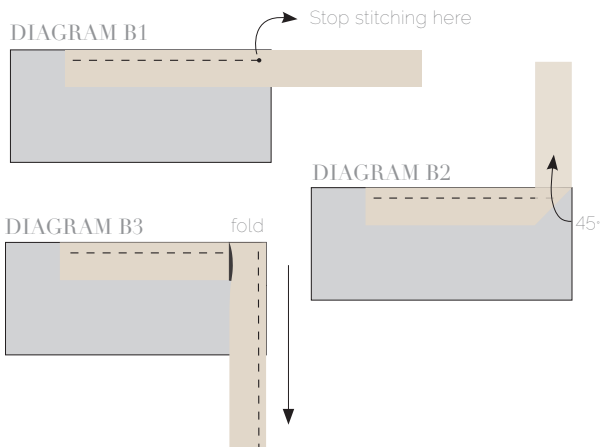
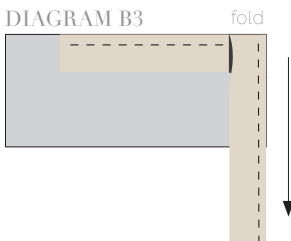


DIAGRAM B2



DIAGRAM B3



FEEL THE DIFFERENCE

artgalleryfabrics.com

NOTE: While all possible care has been taken to ensure the accuracy of this pattern, We are not responsible for printing errors or the way in which individual work varies. Please read instructions carefully before starting the construction of this quilt. If desired, wash and iron your fabrics before starting to cut.

© 2018 Courtesy of Art Gallery Quilts LLC. All Rights Reserved.