

XXXXXXXXXXXXXXXXXXXXXXXXXXXX

A DIVISION OF AGF



# Andula



FABRICS DESIGNED BY JESSICA SWIFT



FAABULA



TAL-65300  
TIGRIS INDIGO



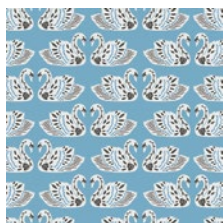
TAL-65301  
MAGIJA PUMPKIN



TAL-65302  
ODESSA TRADITIONALE



TAL-65303  
SOFIA MIDNIGHT



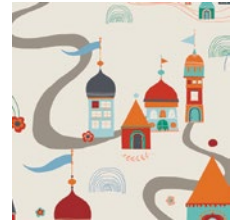
TAL-65304  
BALTIC SWANS SKY



TAL-65305  
ZIRKUSBAU PRIMARY



TAL-65306  
LORE ROOFTOP



TAL-65307  
VILLAGE MEANDER

FAIRYTALE



TAL-75300  
TIGRIS LOLLIPOP



TAL-75301  
MAGIJA OLIVE



TAL-75302  
ODESSA DREAM



TAL-75303  
SOFIA SUNRISE



TAL-75304  
BALTIC SWANS SAND



TAL-75305  
ZIRKUSBAU CANDY



TAL-75306  
LORE COBBLESTONE



TAL-75307  
VILLAGE ADVENTURE



FEEL THE DIFFERENCE © 2018 Courtesy of Art Gallery Quilts LLC. All Rights Reserved.

# Andula

FINISHED SIZE | 20" x 56"

## FABRIC REQUIREMENTS

Fabric <b>A</b>	TAL-65307	5/8 yd.
Fabric <b>B</b>	TAL-65303	5/8 yd.
Fabric <b>C</b>	DEN-L-4000	7/8 yd.
Fabric <b>D</b>	TAL-65301	1/8 yd.
Fabric <b>E</b>	TAL-75305	1/8 yd.
Fabric <b>F</b>	TAL-75303	1/8 yd.
Fabric <b>G</b>	TAL-65302	1/8 yd.
Fabric <b>H</b>	PE-403	1/8 yd.
Fabric <b>I</b>	TAL-75301	1/8 yd.
Fabric <b>J</b>	TAL-65300	1/4 yd.
Fabric <b>K</b>	PE-421	1/8 yd.
Fabric <b>L</b>	TAL-75300	1/8 yd.
Fabric <b>M</b>	PE-432	1/8 yd.
Fabric <b>N</b>	PE-456	1/8 yd.
Fabric <b>O</b>	TAL-65306	1 1/4 yds.

### BACKING FABRIC

Fabric **A** -TAL-65307 1 1/4 yds. (*Suggested*)

### BINDING FABRIC

Fabric **A** -TAL-65306 (*included*)

### Additional Material

-Steam- a-seam double fusible tape

## CUTTING DIRECTIONS

1/4" seam allowances are included.  
WOF means width of fabric.

Eight (8) 10 1/2" x 5 1/2" rectangle from Fabric **A**

Twelve (12) 5 1/2" perfect squares from Fabric **B**

Four (4) 20 1/2" x 5 1/2" rectangle from Fabric **C**

One (1) 20 1/2" x 16 1/2" rectangle from Fabric **C**

For the Applique, Follow the last pages for directions

## CONSTRUCTION

Sew all rights sides together with 1/4" seam allowance.

### Flying Geese construction:

- Take fabric **A** rectangles 10 1/2" x 5 1/2", and two (2) 5 1/2" x 15 1/2" squares from fabrics **B**.
- Place a marked 5 1/2" square from Fabric **B** right sides together on the left side of a 10 1/2" x 5 1/2" rectangle from Fabric **A** as shown.
- Stitch on the drawn line. Trim seam allowance to 1/4". Press corner open. In the same manner, sew a 5 1/2" square to the remaining corner, trim and press.
- Repeat the same process until you have completed eight (8) Flying Geese with Fabrics **A-B**



DIAGRAM 1

- Now, take four flying geese and pair them together in the following manner:

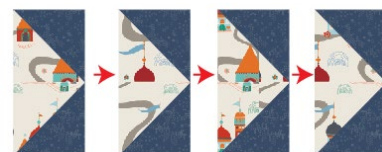


DIAGRAM 2

- Then take two (2) 20 1/2" x 5 1/2" rectangles from Fabric **C** and pair them as diagram below:

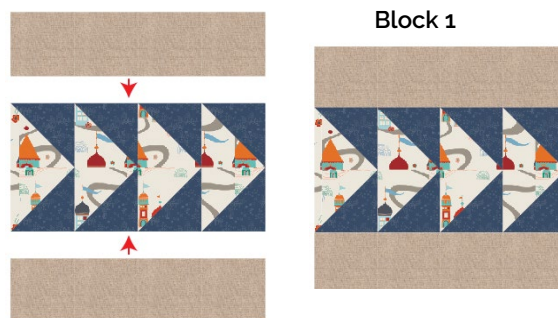


DIAGRAM 3



- Repeat the same process as diagram 2 and 3 for the other side.

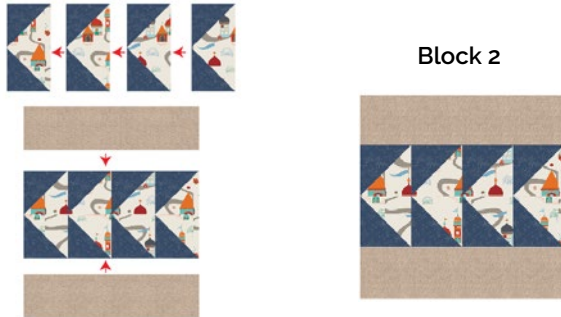


DIAGRAM 4

- Now, take Block 1 and pair it with an 20½" x 16½" piece from Fabric C.
- Then take Block 2 and pair it next to Fabric C 20½" x 16½" piece

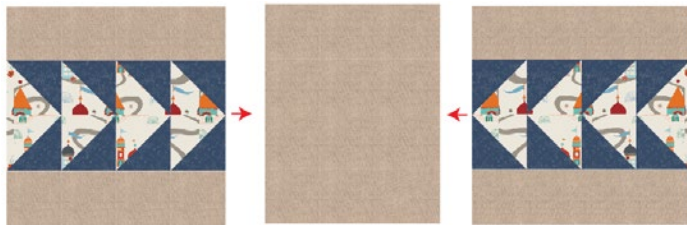


DIAGRAM 5

- Once you have the table runner assemble, take your applique pieces and place them as images below:



DIAGRAM 6

- You can top stitch each piece or quilt as desired the entire table runner and that will hold all the applique pieces.

## TABLE RUNNER ASSEMBLY

*Sew rights sides together.*

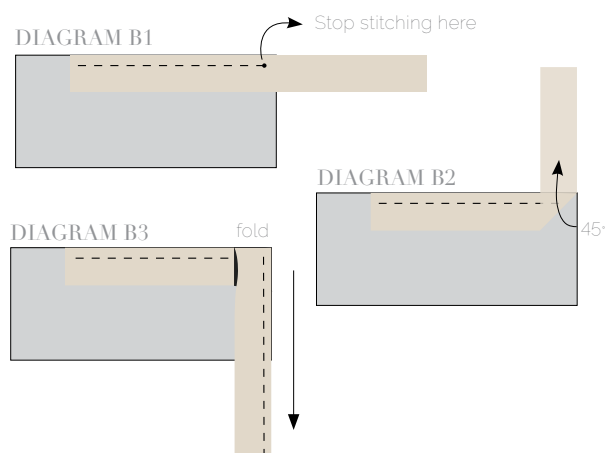
- Place BACKING FABRIC on a large surface wrong side up. Stretch it with masking tape against that surface.
- Place BATTING on top of backing fabric.
- Place TOP on top of the batting with right side facing up. Smooth away wrinkles using your hands.
- Pin all layers together and baste with basting thread, using long stitches. You can also use safety pins to join the layers.
- Machine or hand quilt starting at the center and working towards the corners. Remember that quilting motifs are a matter of personal preference. Have fun choosing yours!
- After you finished, trim excess of any fabric or batting, squaring the quilt to proceed to bind it.

## BINDING

*Sew rights sides together.*

- Cut enough strips  $1\frac{1}{2}$ ' wide by the width of the fabric to make a final strip 162' long. Start sewing the binding strip in the middle of one of the sides of the quilt, placing the strip right side down and leaving an approximated 5' tail. Sew with  $\frac{1}{4}$ ' seam allowance (using straight stitch), aligning the strip's raw edge with the quilt top's raw edge.
- Stop stitching  $\frac{1}{4}$ ' before the edge of the quilt (**DIAGRAM B 1**). Clip the threads. Remove the quilt from under the machine presser foot. Fold the strip in a motion of  $45^\circ$  and upward, pressing with your fingers (**DIAGRAM B 2**). Hold this fold with your finger, bring the strip down in line with the next edge, making a horizontal fold that aligns with the top edge of the quilt (**DIAGRAM B 3**). Start sewing at  $\frac{1}{4}$ ' of the border, stitching all the layers. Do the same in the four corners of the quilt.

- Stop stitching before you reach the last 5 or 6 inches. Cut the threads and remove the quilt from under the machine presser foot. Lay the loose ends of the binding flat along the quilt edge, folding the ends back on themselves where they meet. Press them together to form a crease. Using this crease as the stitching line, sew the two open ends of the binding with right sides together (you can help yourself marking with a pencil if the crease is difficult to see).
- Trim seam to  $\frac{1}{4}$ ' and press open. Complete the sewing. Turn binding to back of the quilt, turn raw edge inside and stitch by hand using blind stitch.



[artgalleryfabrics.com](http://artgalleryfabrics.com)

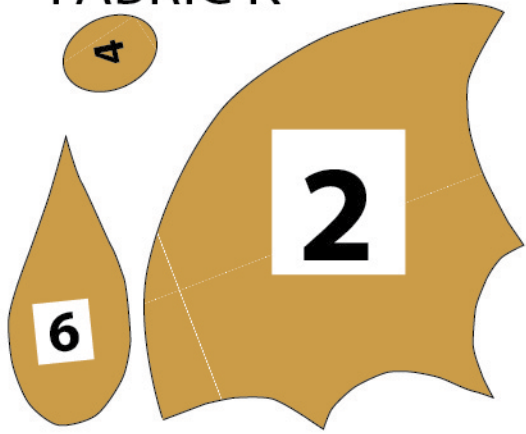
**NOTE:** While all possible care has been taken to ensure the accuracy of this pattern, We are not responsible for printing errors or the way in which individual work varies. Please read instructions carefully before starting the construction of this quilt. If desired, wash and iron your fabrics before starting to cut.

© 2018 Courtesy of Art Gallery Quilts LLC. All Rights Reserved.





FABRIC K



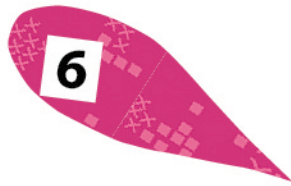
## FABRIC L



## FABRIC D



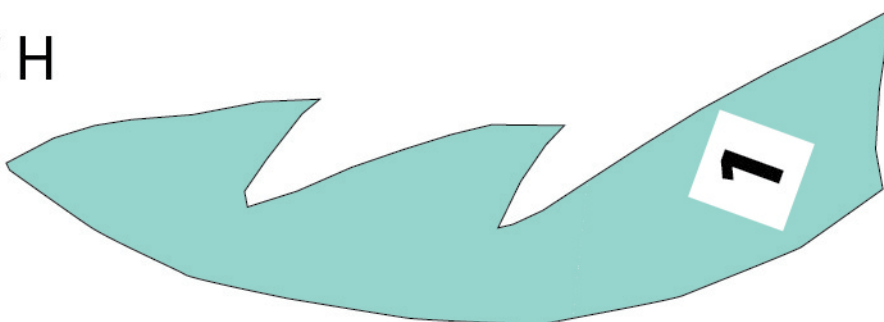
## FABRIC F



## FABRIC E



## FABRIC H



## FABRIC N





x x x x x x x x x x x x x x x x x x x

