

## A vibrant, multi-colored shoulder bag with a purple strap, hanging against a white wooden plank background. The bag's body is covered in a complex patchwork of various patterns, including swans, stars, and geometric shapes. It is adorned with tassels and a decorative orange and pink border along the top edge.





jessica swift

QUILT DESIGNED BY JESSICA SWIFT

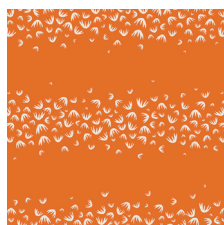


FABRICS DESIGNED BY JESSICA SWIFT

FAABULA



TAL-65300  
TIGRIS INDIGO



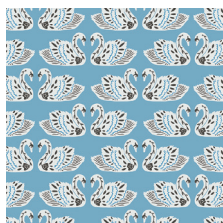
TAL-65301  
MAGIJA PUMPKIN



TAL-65302  
ODESSA TRADITIONALE



TAL-65303  
SOFIA MIDNIGHT



TAL-65304  
BALTIC SWANS SKY



TAL-65305  
ZIRKUSBAU PRIMARY



TAL-65306  
LORE ROOFTOP

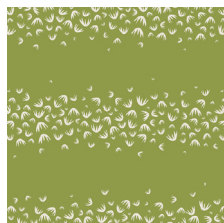


TAL-65307  
VILLAGE MEANDER

FAIRYTALE



TAL-75300  
TIGRIS LOLLIPOP



TAL-75301  
MAGIJA OLIVE



TAL-75302  
ODESSA DREAM



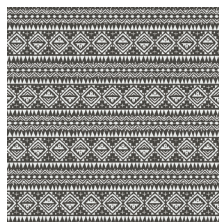
TAL-75303  
SOFIA SUNRISE



TAL-75304  
BALTIC SWANS SAND



TAL-75305  
ZIRKUSBAU CANDY



TAL-75306  
LORE COBBLESTONE



TAL-75307  
VILLAGE ADVENTURE



FEEL THE DIFFERENCE © 2018 Courtesy of Art Gallery Quilts LLC. All Rights Reserved.



Fabric <b>A</b>	TAL-65301	½ yd
Fabric <b>B</b>	TAL-65303	FE
Fabric <b>C</b>	TAL-65307	FE
Fabric <b>D</b>	DEN-S-2004	FE
Fabric <b>E</b>	TAL-65304	FE
Fabric <b>F</b>	TAL-75306	FE
Fabric <b>G</b>	PE-408	FE
Fabric <b>H</b>	TAL-75305	FE
Fabric <b>I</b>	TAL-75304	FE
Fabric <b>J</b>	DEN-S-2008	FE

Fabric **A** TAL-65301 ½ yd. (*included*)

*1/4" seam allowances are included.  
WOF means width of fabric.*

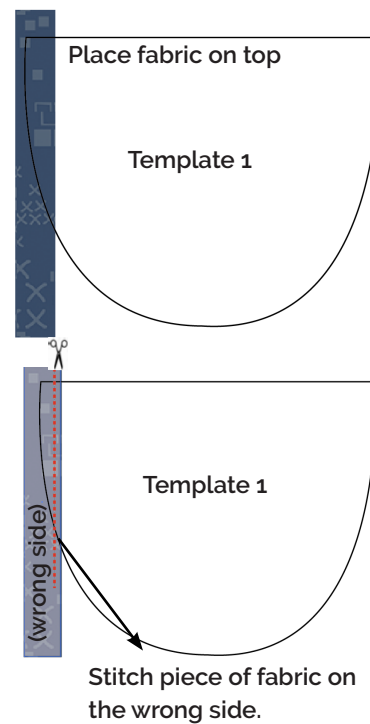
Cut two (2) template 2 (lining)

Cut two (2) 9 1/2" x 5 1/2" rectangles (inside pocket)

Cut strips in different lengths and widths:

*Sew all rights sides together with ¼" seam allowance.*

- Cut two (2) Template 1 in batting.
- Start placing any fabric color strip you desire on top of the batting.
- Stitch the piece of fabric on the wrong side and fold.
- Refer to the diagram below:



- Place the next strip in a different fabric and stitch.



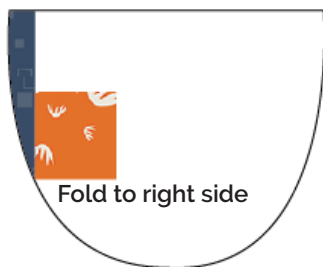
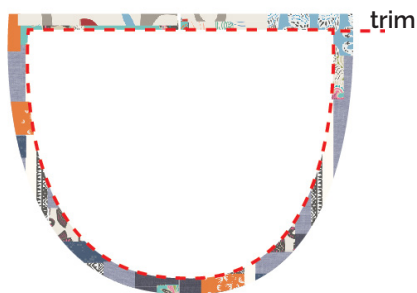


DIAGRAM 2

- Repeat the same steps using different fabric strips or shapes until you cover the whole template.
- Repeat the same process for the other side of the bag using batting and template 1. You don't need to have two exact blocks. The beauty of this project is that you are piecing as you go.
- Use template 2 to cut the final block for your bag and start the bag assembly.
- Below you can see an example of a complete 'quilt as you go' block.



- Place template 2 on top of your template 1 pieced block and cut the shape of you bag.



## HANDLES & DROP IN POCKET

*Sew rights sides together.*

- Use the (1) 9 1/2' x 5 1/2' rectangle from fabric **B**.
- **Drop in pocket:**
- Take the 9 1/2" x 5 1/2" Fabric **B** piece and place it on top of one piece of your lining pieces.
- Take the edges of Fabric **B** and fold them in and stitch right on the edge leaving the top part unsewn
- Stitch on the middle or more to your right or left in order to create your drop-in pockets.

- If you want, create a contrasting color binding detail on the top part of your pocket.
- If you desire, create a quilting motif on the pocket.
- Refer to the diagram below to see how the inside should look.

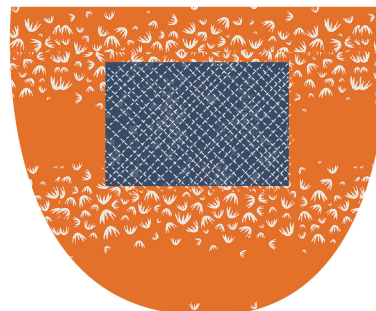
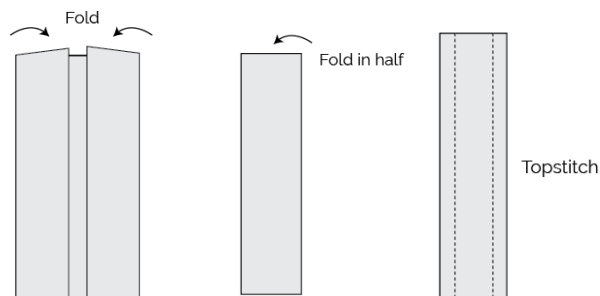


DIAGRAM 4

- Use the (1) 9 1/2' x 5 1/2' rectangle from fabric **B**.
- **Creating the bag handle**
- Use fabric **D** 2 1/2' x WOF fabric strip.
- Fold both long sides of your strip into the center of your strip and then fold in half. Press and top stitch both sides of your strap at 1/4'.



- Once you are done with the handles set them aside and attach the two (2) main bag pieces together wrong sides facing together.
- Attach handle to each side of the bag facing down.
- Refer to the diagram below for proper attachment





DIAGRAM 5

## BAG ASSEMBLY

*Sew rights sides together.*

- Place bag body (exterior) inside lining, right sides together. Align side seams, Pin lining to exterior.
- Stitch lining to exterior all the way around top of pack opening.
- Make sure to keep side seams aligned and seam allowances open as they are stitched.
- Press seam allowances open all the way around the top of the pack.
- Leave a 3" hole in one of the sides of the lining. Flip you bag inside out.
- Turn backpack right side out through the hole and top stitch or hand stitch to assure a clean finish.
- Place the lining back inside the exterior, and press the lining/exterior attachment around the cab from the right side.
- You are finally done! Enjoy your new bag!

## QUILT ASSEMBLY

*Sew rights sides together.*

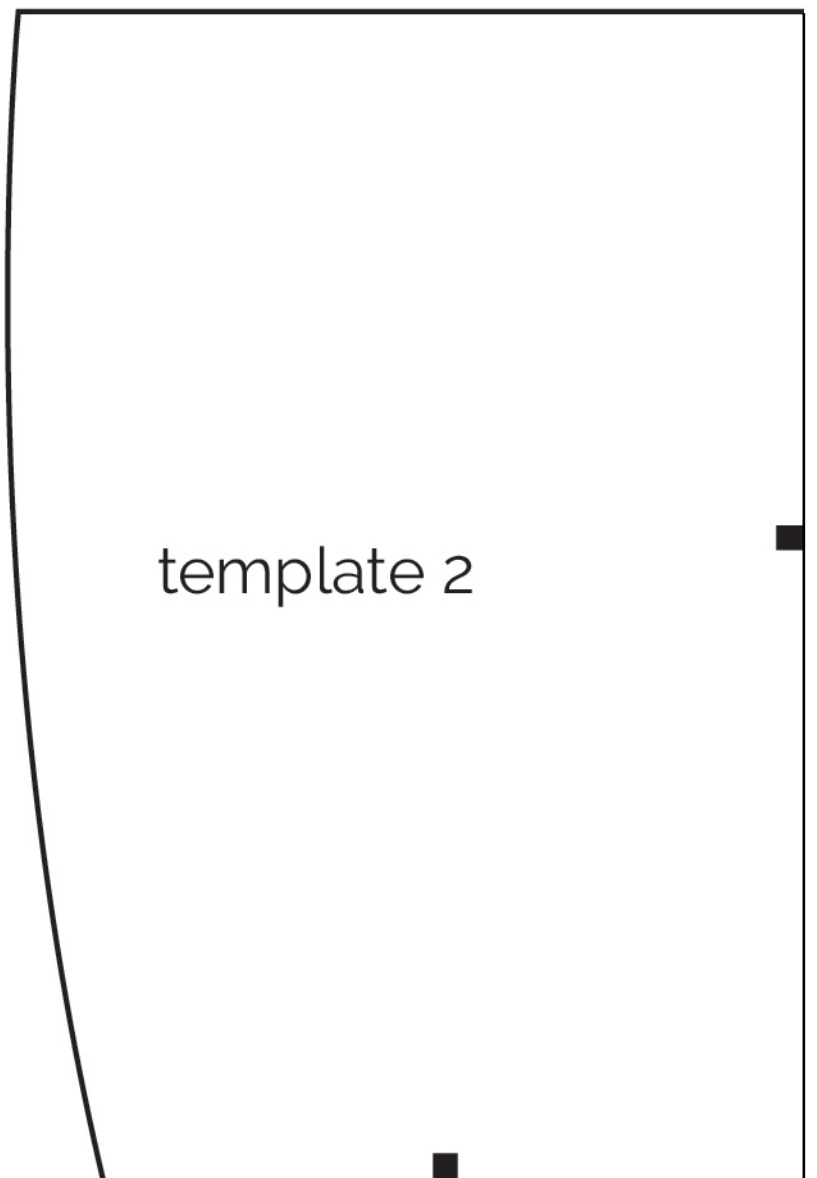
- Place BACKING FABRIC on a large surface wrong side up. Stretch it with masking tape against that surface.
- Place BATTING on top of backing fabric.
- Place TOP on top of the batting with right side facing up. Smooth away wrinkles using your hands.
- Pin all layers together and baste with basting thread, using long stitches. You can also use safety pins to join the layers.
- Machine or hand quilt starting at the center and working towards the corners. Remember that quilting motifs are a matter of personal preference. Have fun choosing yours!
- After you finished, trim excess of any fabric or batting, squaring the quilt to proceed to bind it.



[artgalleryfabrics.com](http://artgalleryfabrics.com)

NOTE: While all possible care has been taken to ensure the accuracy of this pattern, We are not responsible for printing errors or the way in which individual work varies.

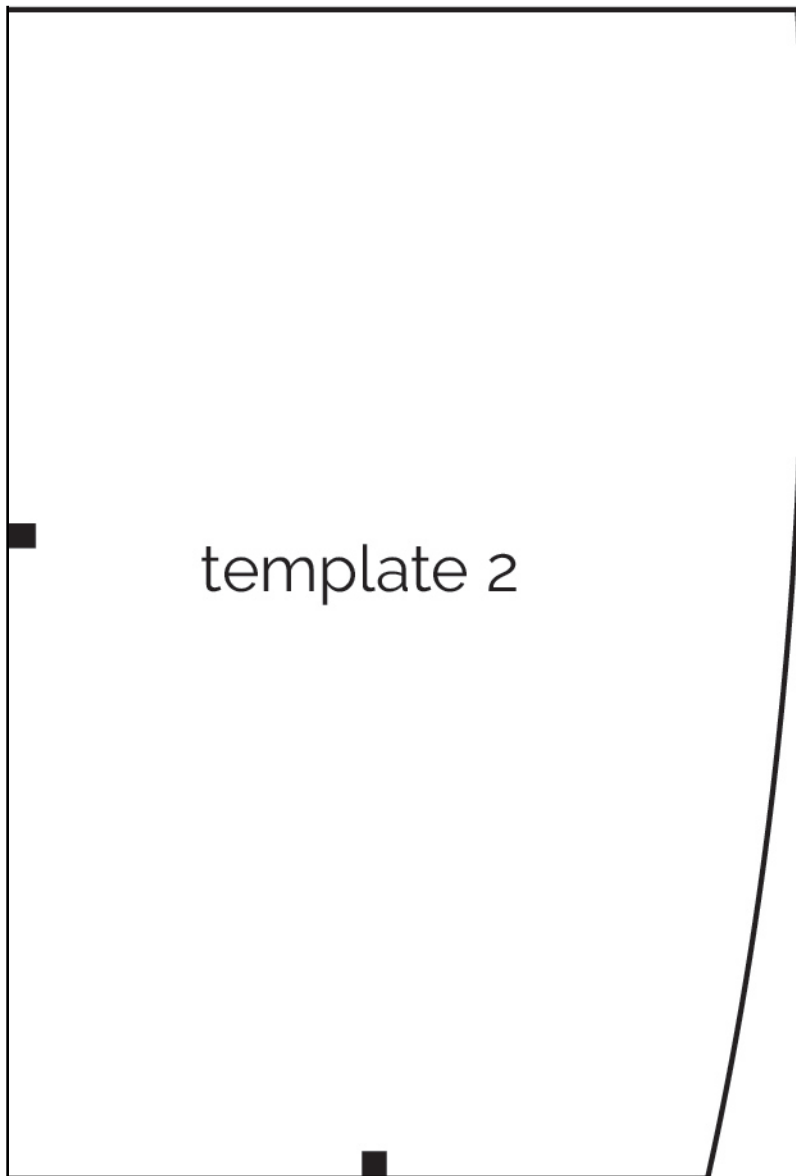
Please read instructions carefully before starting the construction of this quilt. If desired, wash and iron your fabrics before starting to cut.



template 2

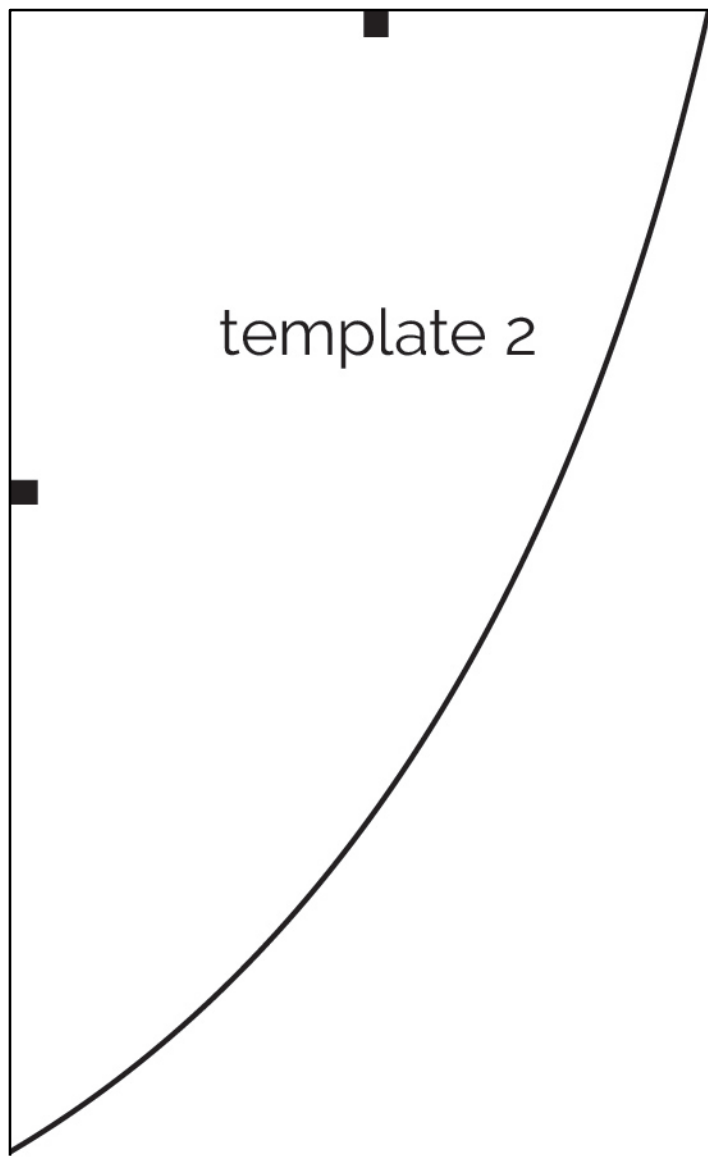


template 2





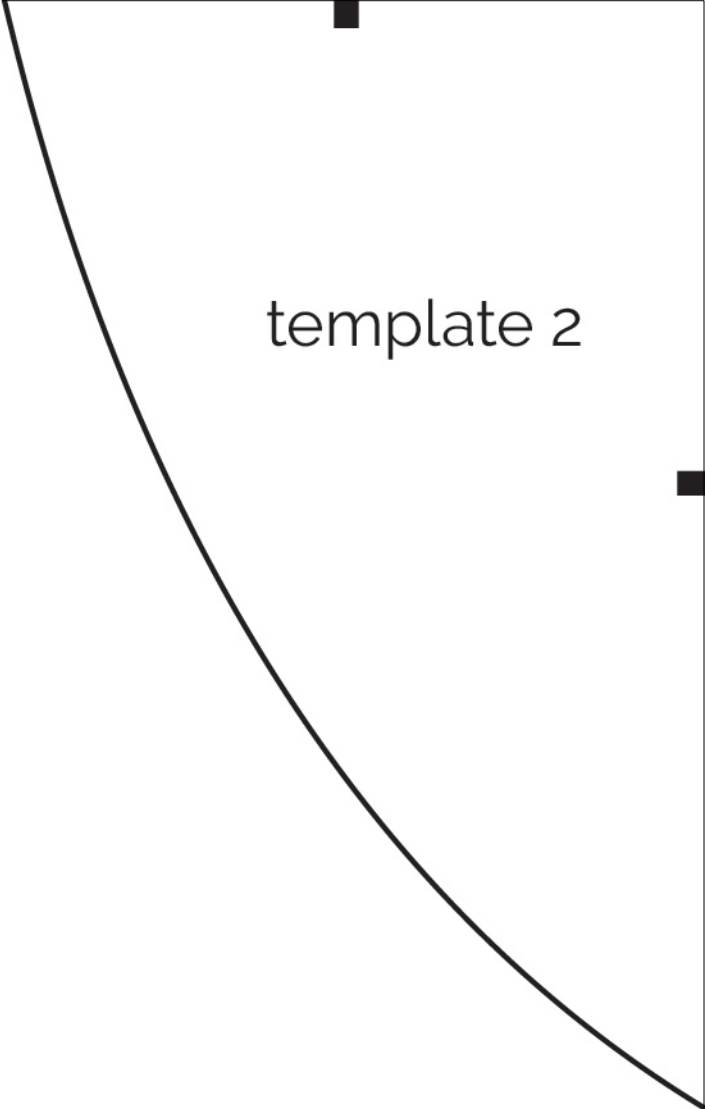
XX



template 2



XX

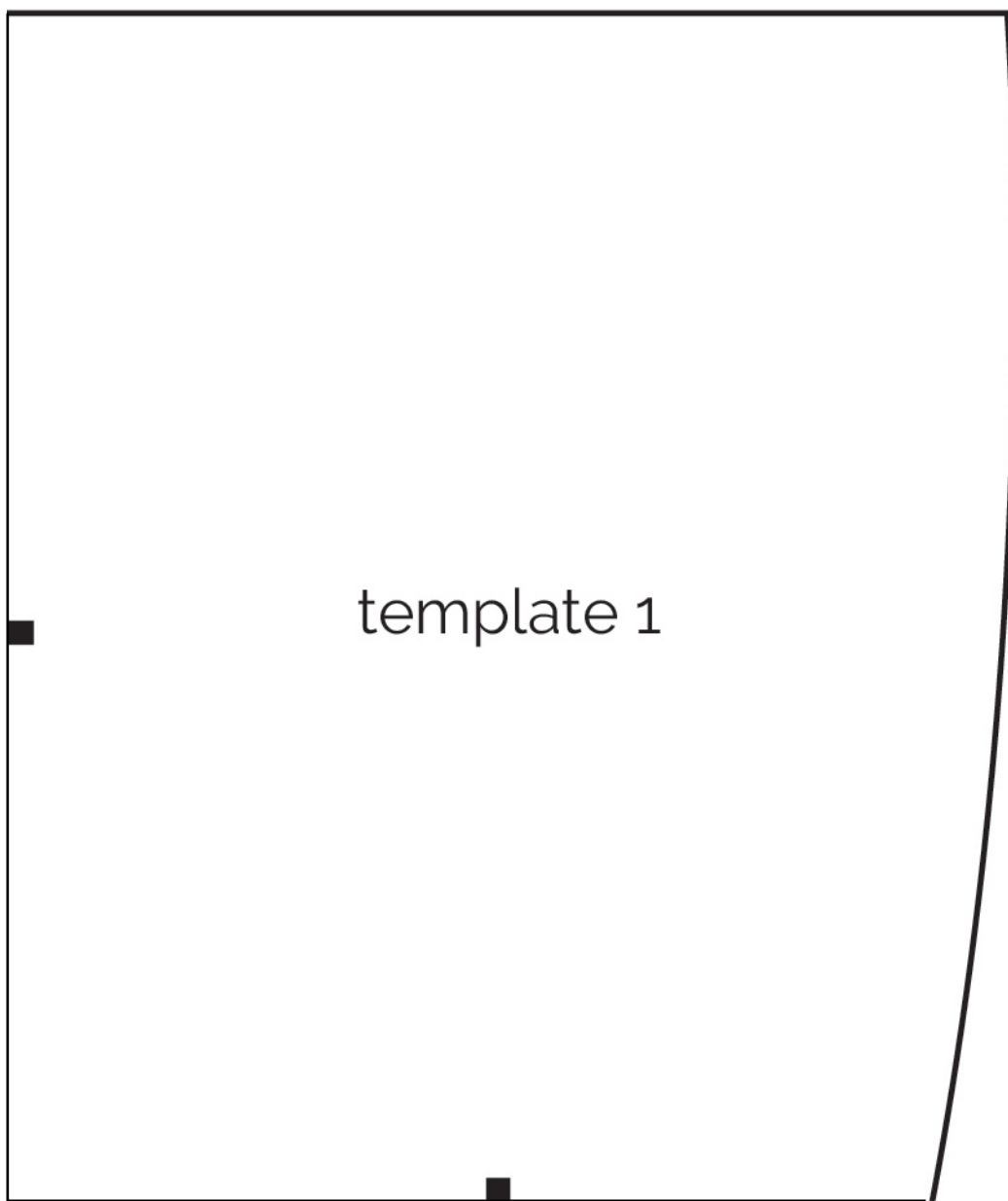


## template 2

template 1



template 1





XX

template 1



template 1