

X
X
X
X
X
X
X
X
X
X
X
X
X
X
X

PLAY TIME



XXXXXXXXXXXXXXXXXXXXXXXXXXXX



PLAY TIME

QUILT DESIGNED BY AGF STUDIO

Lambkin

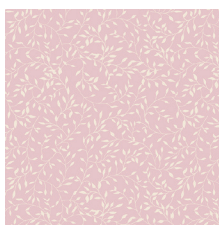
FABRICS DESIGNED BY BONNIE CHRISTINE



THISTLE



LMB-18720
MY DARLING



LMB-18722
SWEET WISTERIA



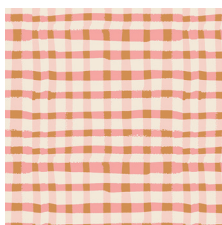
LMB-18724
WIND OBSERVER FOG



LMB-18725
LITTLE FLORICULTURIST



LMB-18727
PRETTY TWIGGY



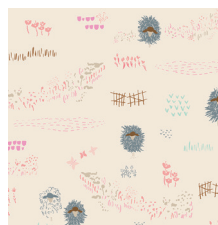
LMB-18729
WOOLY BLUSH



LMB-18730
ARISTA KEEPSAKE



LMB-18731
KEEPING WATCH MIST



LMB-18732
LAMBSCAPE ASHEN

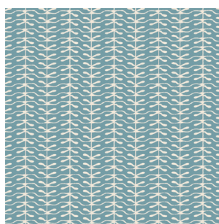


WOT-21409
VALLEY VIEW RIVIERA

OATS



LMB-28721
SIR WOOLY



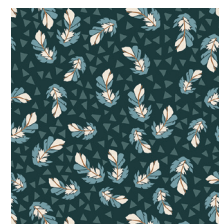
LMB-28723
WINTER SPROUT



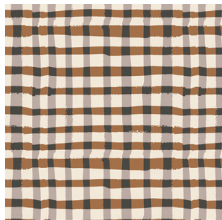
LMB-28724
WIND OBSERVER SLATE



LMB-28726
LITTLE ENTOMOLOGIST



LMB-28728
DUSK NESTLING



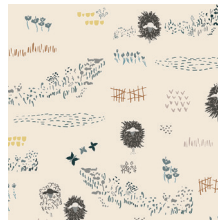
LMB-28729
WOOLY UMBER



LMB-28730
ARISTA OATS



LMB-28731
KEEPING WATCH DIM



LMB-28732
LAMBSCAPE YONDER



LMB-28733
VALLEY VIEW ECHO



PLAY TIME

FINISHED SIZE | 40" x 40"

FABRIC REQUIREMENTS

Fabric A	LMB-28721	¼ yd.
Fabric B	LMB-28723	¼ yd.
Fabric C	LMB-28724	¾ yd.
Fabric D	LMB-28726	¼ yd.
Fabric E	LMB-28728	¼ yd.
Fabric F	LMB-28729	¼ yd.
Fabric G	LMB-28730	¼ yd.
Fabric H	LMB-28731	⅛ yd.
Fabric I	LMB-28732	¼ yd.
Fabric J	LMB-28733	¼ yd.
Fabric K	PE-433	¾ yd.
Fabric L	PE-440	½ yd.
Fabric M	DEN-S-2006	⅛ yd.
Fabric N	DEN-S-2002	⅛ yd.

BACKING FABRIC

LMB-28733 1 ¼ yd.

BINDING FABRIC

LMB-18729- (fabric C) included

CUTTING DIRECTIONS

¼" seam allowances are included.

Please note that Fabrics A, B, C, D, G, H, I, and J are directional prints. Cut carefully according to directions & refer to illustrations.

*Keep Outer Curve & Corner Pattern Pieces together.

From Fabric A:

- Three (3) 5 ½" squares
- Five (5) 2" wide x 5 ½" tall rectangles
- Two (2) 2" squares

From Fabric B:

- Four (4) 2" wide x 5 ½" tall rectangles
- Four (4) 5 ½" wide x 2" tall rectangles

From Fabric C:

- One (1) 5 ½" square
- Two (2) 2" wide x 5 ½" tall rectangles
- One (1) 5 ½" wide x 2" tall rectangle
- Two (2) 2" squares
- Two (2) 1" wide x 3 ½" tall rectangles
- One (1) 1" wide x 2" tall rectangle

From Fabric D:

- One (1) 5 ½" square
- Six (6) 5 ½" wide x 2" tall rectangles

From Fabric E:

- One (1) 5 ½" square
- One (1) 1" wide x 2" tall rectangle
- Two (2) 1" wide x 1 ½" tall rectangles
- Three (3) Outer Curve & (3) Corner Pattern Pieces

From Fabric F:

- One (1) 5 ½" square
- One (1) 4 ½" wide x 3 ½" tall rectangle
- Two (2) 1" wide x 2" tall rectangles
- Two (2) 1" wide x 1 ½" tall rectangle
- Two (2) Outer Curve & (2) Corner Pattern Pieces

From Fabric G:

- Four (4) 2" wide x 5 ½" tall rectangles
- One (1) 4 ½" wide x 3 ½" tall rectangle

From Fabric I:

- Two (2) 5 ½" squares
- Four (4) 5 ½" wide x 2" tall rectangles
- Four (4) 2" squares

From Fabric J:

- Two (2) 5 ½" squares
- Two (2) 5 ½" wide x 2" tall rectangles
- Two (2) 2" wide x 5 ½" tall rectangles

From Fabric K:

- Ten (10) 5 ½" wide x 2" tall rectangles
- Four (4) 1" x 3 ½" rectangles
- One (1) Outer Curve & (1) Corner Pattern Piece

From Fabric L:

- Twenty-four (24) 5 ½" wide x 2 ½" tall rectangles
- Four (4) 2 ½" wide x 2" tall rectangles
- Nineteen (19) Curve Pattern Pieces

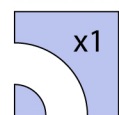
From Fabric M:

- One (1) 4 ½" wide x 3 ½" tall rectangle
- One (1) 1" wide x 2" tall rectangle
- One (1) 1" wide x 1 ½" tall rectangle

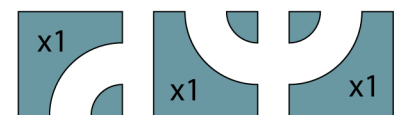
Cutting the Pattern Pieces from Directional Fabric

- Refer to the illustration below for how to place your pattern pieces on the fabric. Keep Outer Curve & Corner pattern pieces pinned together

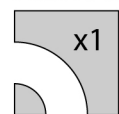
Fabric A



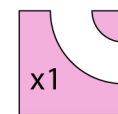
Fabric B



Fabric C



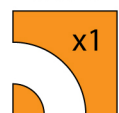
Fabric D



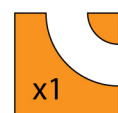
Fabric J



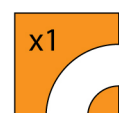
Fabric I



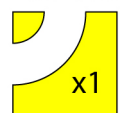
Fabric I



Fabric I



Fabric G



DIYORAMI 1

CONSTRUCTION

Sew all rights sides together with ¼" seam allowance.

Paper Piecing The Roofs and Tree-tops

- Use the paper piecing templates found at the end of these instructions to sew the triangles for the roofs and tree tops.
- If you are new to paper piecing check out this video tutorial on how to paper piece:

<http://www.agfblog.com/2017/08/paper-piecing-tips-how-to-make-a-crossed-canoes-block-.html>

Fabric Combinations:

- One (1) House Roof
1.) Fabric M, 2.) Fabric C, 3.) Fabric C.
- One (1) House Roof
1.) Fabric F, 2.) Fabric K, 3.) Fabric K.
- Two (2) House Roofs
1.) Fabric N, 2.) Fabric K, 3.) Fabric K.
- One (1) Large Tree
1.) Fabric J, 2.) Fabric G, 3.) Fabric G.
- One (1) Large Tree
1.) Fabric N, 2.) Fabric J, 3.) Fabric J.
- One (1) Large Tree
1.) Fabric H, 2.) Fabric K, 3.) Fabric K.
- One (1) Large Tree
1.) Fabric E, 2.) Fabric I, 3.) Fabric I.
- One (1) Large Tree
1.) Fabric M, 2.) Fabric H, 3.) Fabric H.
- One (1) Large Tree
1.) Fabric C, 2.) Fabric K, 3.) Fabric K.
- One (1) Small Tree
1.) Fabric J, 2.) Fabric G, 3.) Fabric G.
- One (1) Small Tree
1.) Fabric N, 2.) Fabric J, 3.) Fabric J.
- One (1) Small Tree
1.) Fabric E, 2.) Fabric K, 3.) Fabric K.
- One (1) Small Tree
1.) Fabric E, 2.) Fabric I, 3.) Fabric I.
- One (1) Small Tree
1.) Fabric M, 2.) Fabric H, 3.) Fabric H.
- One (1) Small Tree
1.) Fabric E, 2.) Fabric K, 3.) Fabric K.

Assembling the Houses

Sew together the bottom of the houses by sewing the 1' x 3 ½' strips (background) to either side of the 4 ½' x 3 ½' rectangles (house), then sew the roofs onto the tops of the pieced house bases. Fabric combinations:

- House 1: Sew fabric C strips to sides of fabric F house. Sew Fabric M roof on top.
- House 2/3: Sew fabric K strips to sides of fabric G house. Sew Fabric N roof on top. Make two (2).
- House 4: Sew fabric K strips to sides of fabric M house. Sew Fabric F roof on top.

Assembling the Tree Blocks

Large Tree: Sew the 1 ¾' x 1 ½' rectangles (background) to either side of the 1' x 1 ½' strips (trunk). Then sew the Large Tree Tops and Tree Trunks together.

Small Tree: Sew the 1 ¼' x 2' rectangles (background) to either side of the 1' x 2' strips (trunk). Then sew the Small Tree Tops and Tree Trunks together.

Finally, sew the trees together.

Fabric combinations:

- Tree 1: Sew fabric G rectangles to sides of fabric E trunks. Pair with Fabric J/G trees.
- Tree 2: Sew fabric J rectangles to sides of fabric M trunks. Pair with Fabric N/J trees.
- Tree 3: Sew fabric K rectangles to sides of fabric F trunks. Pair with Large Fabric H/K tree and Small E/K tree.
- Tree 4: Sew fabric I rectangles to sides of fabric E trunks. Pair with Fabric E/I trees.
- Tree 5: Sew fabric H rectangles to sides of fabric F trunks. Pair with Fabric M/H trees.
- Tree 6: Sew fabric K rectangles to sides of fabric E (Lg tree) and Fabric C (Sm Tree) trunks. Pair with Large Fabric C/K tree and Small E/K tree.

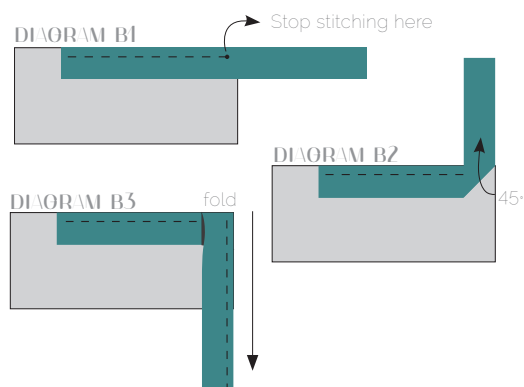


DIAGRAM 2

QUILT ASSEMBLY

- © Place BACKING FABRIC on a large surface wrong side up. Stretch it with masking tape against that surface.
- © Place BATTING on top of backing fabric.
- © Place TOP on top of the batting with right side facing up. Smooth away wrinkles using your hands.
- © Pin all layers together and baste with basting thread, using long stitches. You can also use safety pins to join the layers.
- © Machine or hand quilt starting at the center and working towards the corners. Remember that quilting motifs are a matter of personal preference. Have fun choosing yours!
- © **Recommended Quilting:** We think this play mat would look great with parallel lines (about a ½' apart) following the curves of the road and a free-motion quilting (leaf motif?) in the negative space around the houses, sheep and trees.
- © After you finish, trim off any excess fabric or batting, squaring the quilt to proceed to bind it.

- © Stop stitching before you reach the last 5 or 6 inches. Cut the threads and remove the quilt from under the machine presser foot. Lay the loose ends of the binding flat along the quilt edge, folding the ends back on themselves where they meet. Press them together to form a crease. Using this crease as the stitching line, sew the two open ends of the binding with right sides together (you can help yourself marking with a pencil if the crease is difficult to see).
- © Trim seam to ¼" and press open. Complete the sewing. Turn binding to back of the quilt, turn raw edge inside and stitch by hand using blind stitch.



BINDING

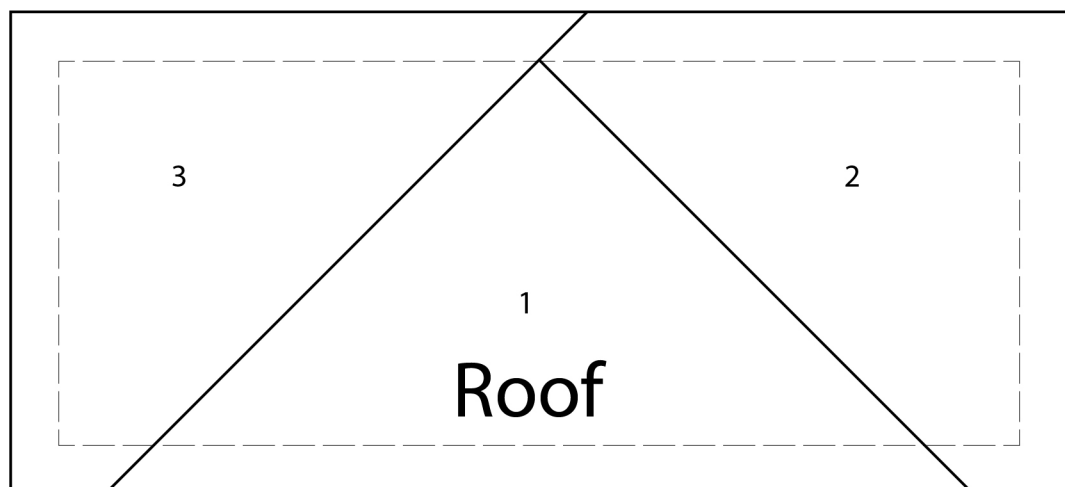
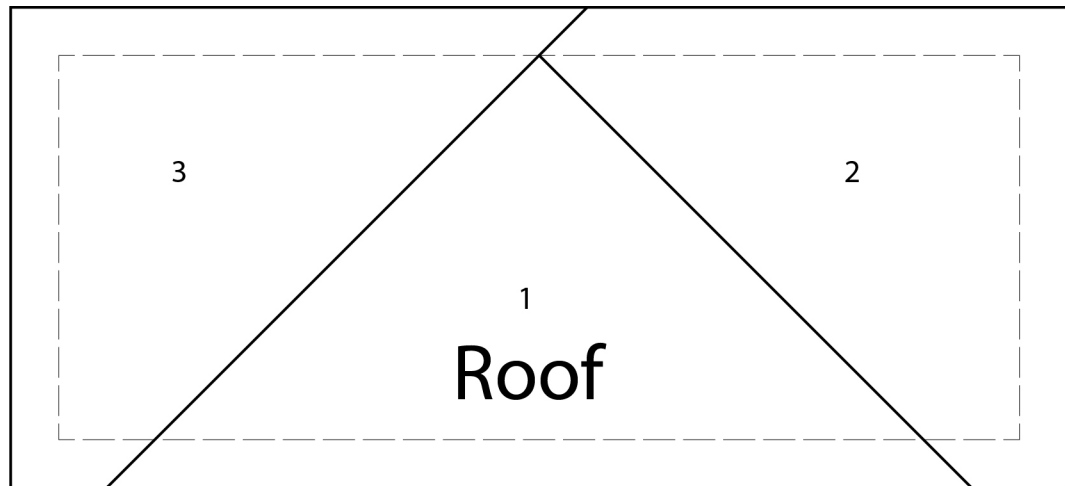
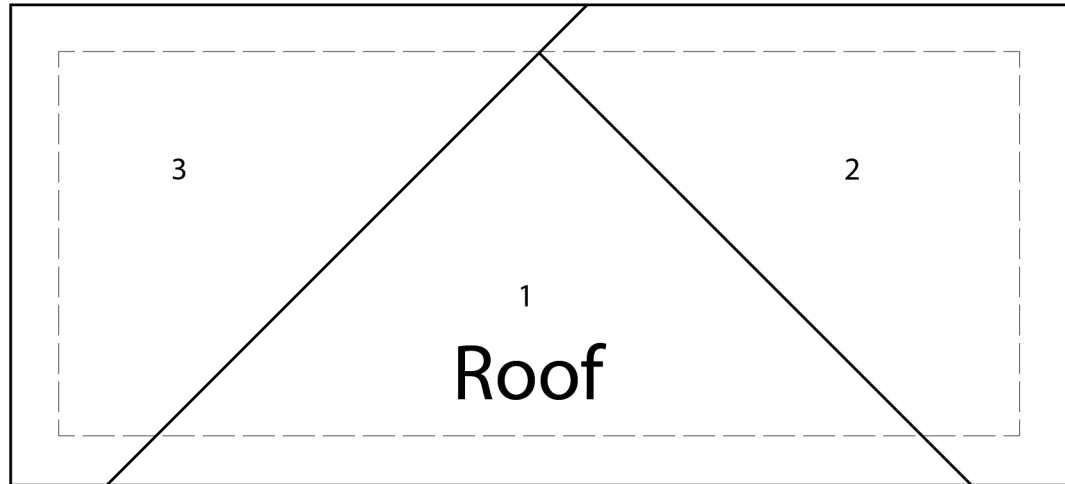
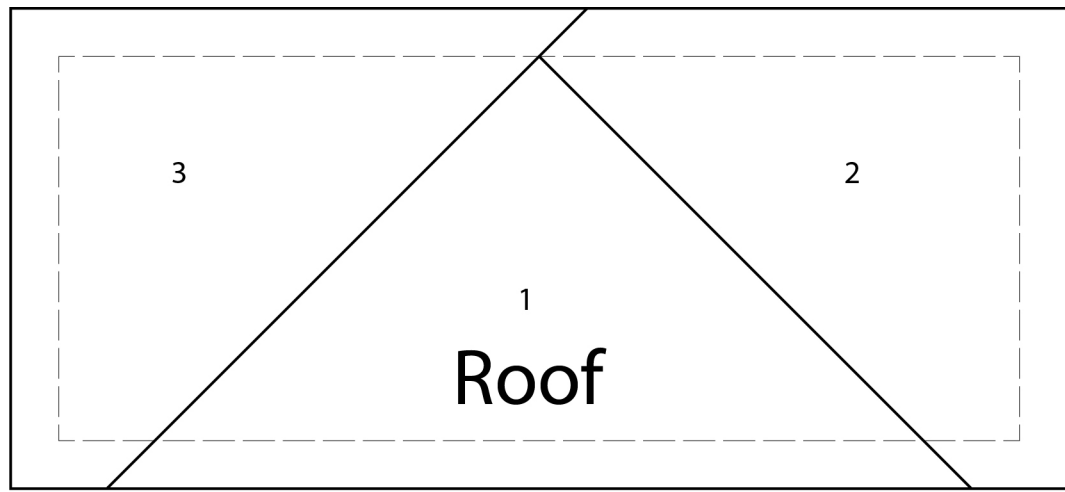
Sew rights sides together.

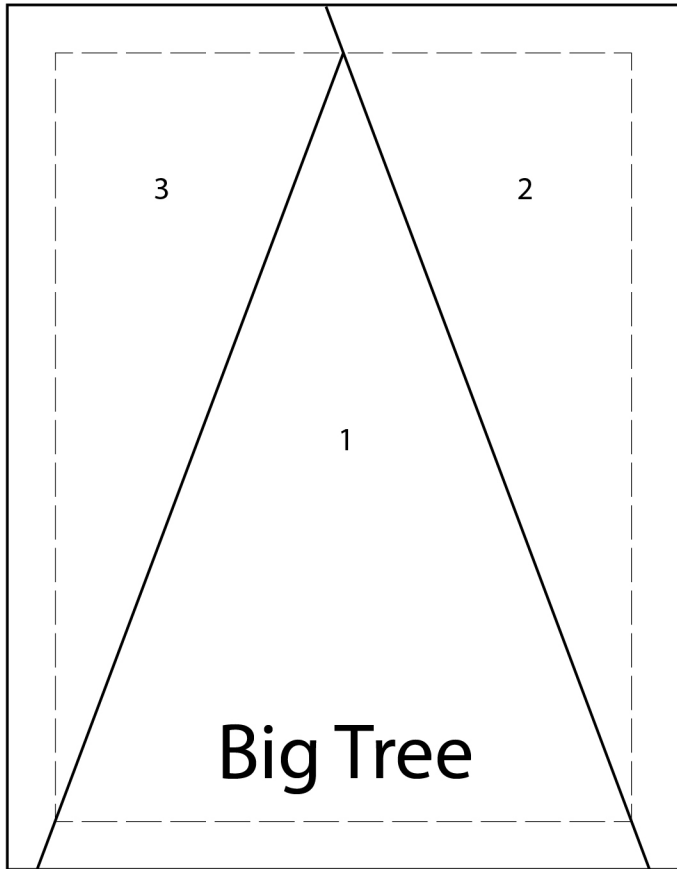
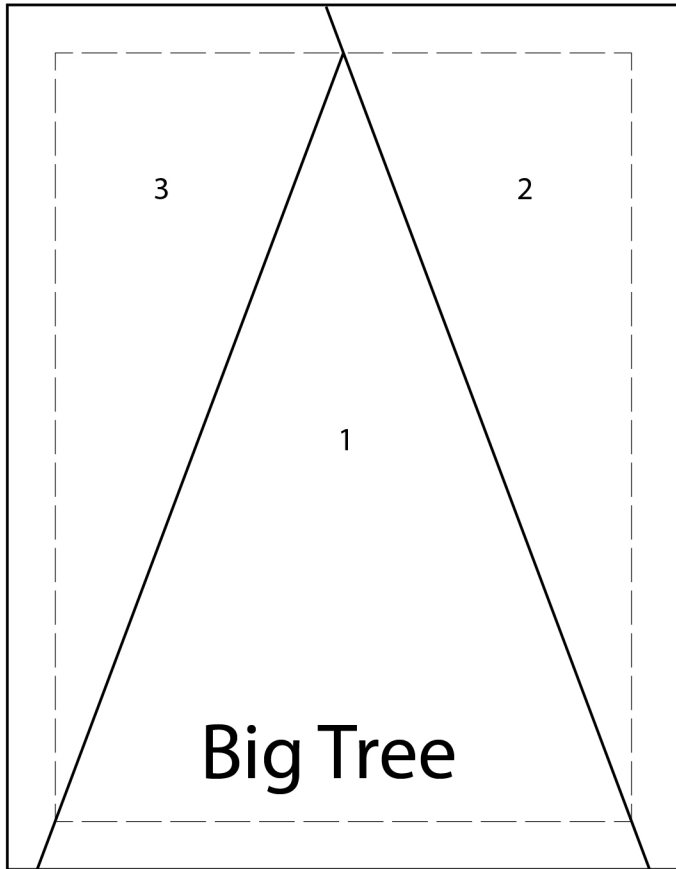
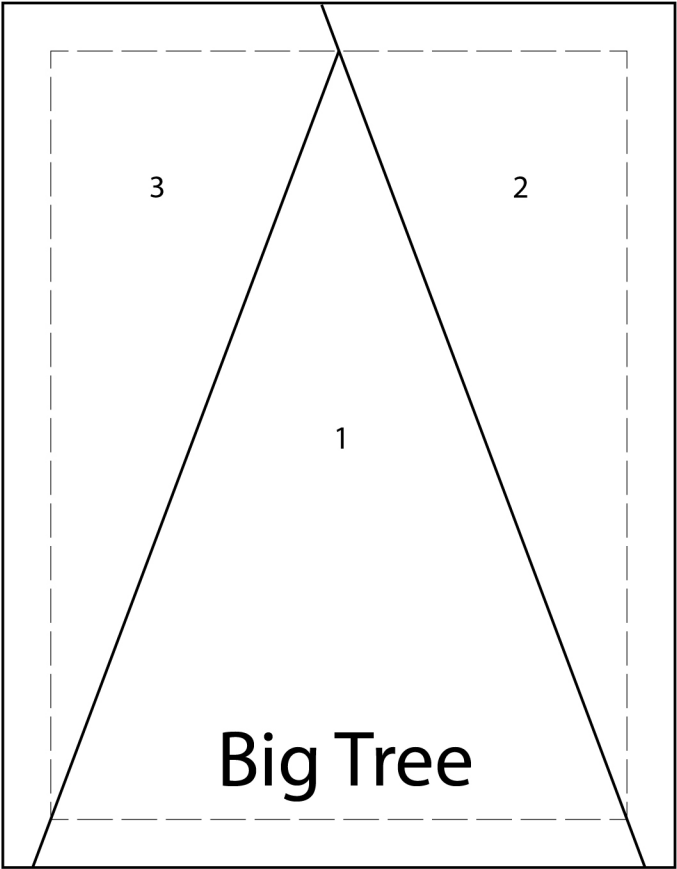
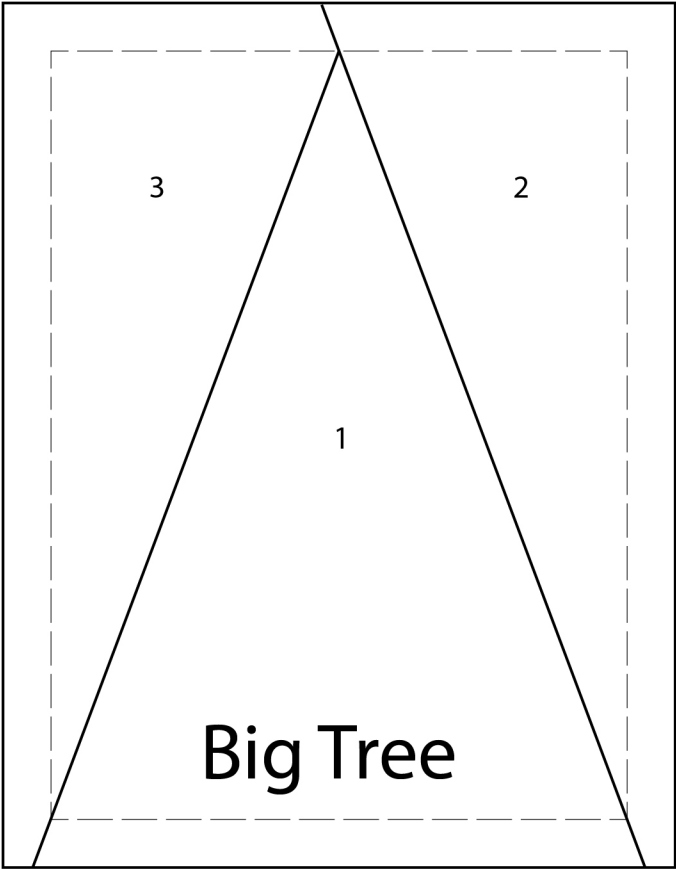
- Cut seven strips 1½" wide by the width of the fabric to make a final strip 170" long. Start sewing the binding strip in the middle of one of the sides of the quilt, placing the strip right side down and leaving an approximated 5" tail. Sew with ¼" seam allowance (using straight stitch), aligning the strip's raw edge with the quilt top's raw edge.
- Stop stitching ¼" before the edge of the quilt (**DIAGRAM B 1**). Clip the threads. Remove the quilt from under the machine presser foot. Fold the strip in a motion of 45° and upward, pressing with your fingers (**DIAGRAM B2**). Hold this fold with your finger, bring the strip down in line with the next edge, making a horizontal fold that aligns with the top edge of the quilt (**DIAGRAM B3**). Start sewing at ¼" of the border, stitching all the layers. Do the same in the four corners of the quilt.

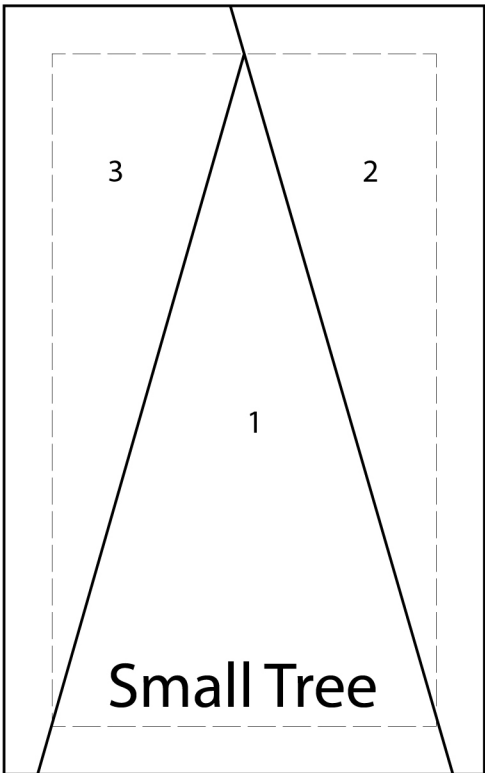
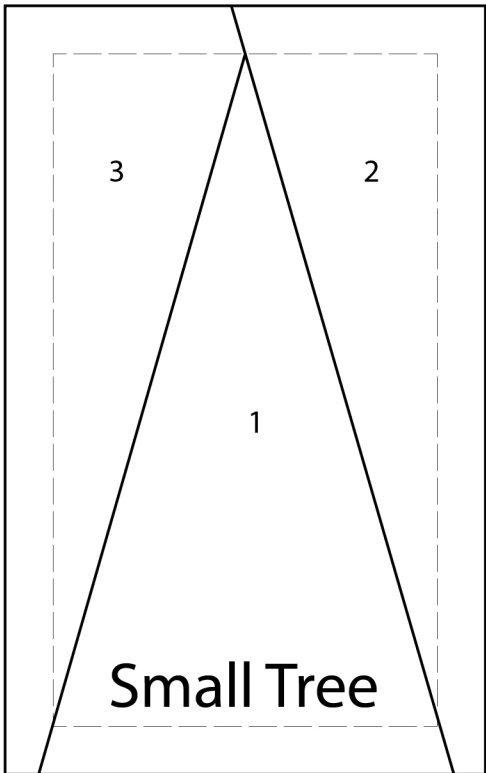
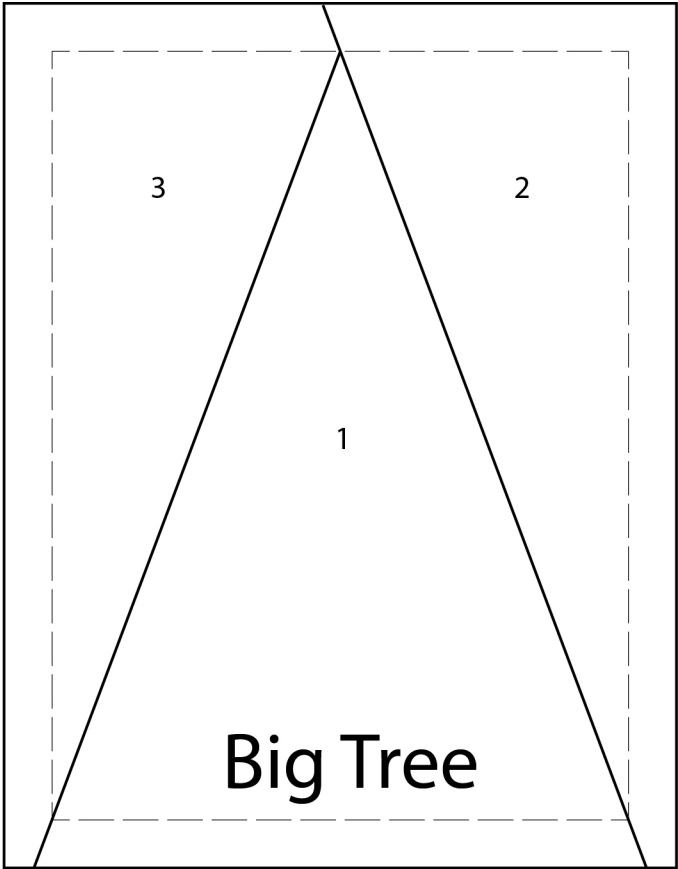
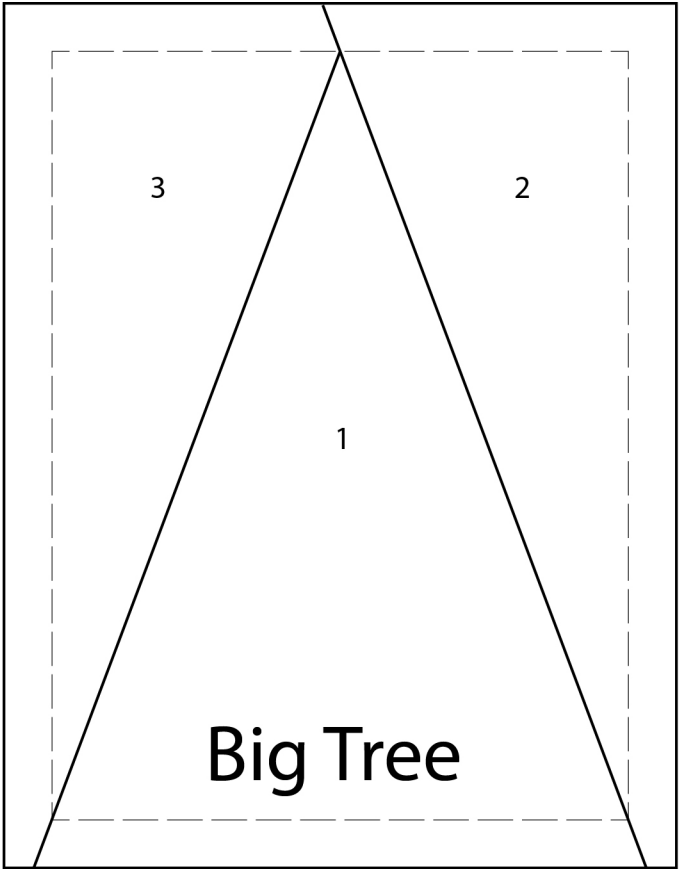


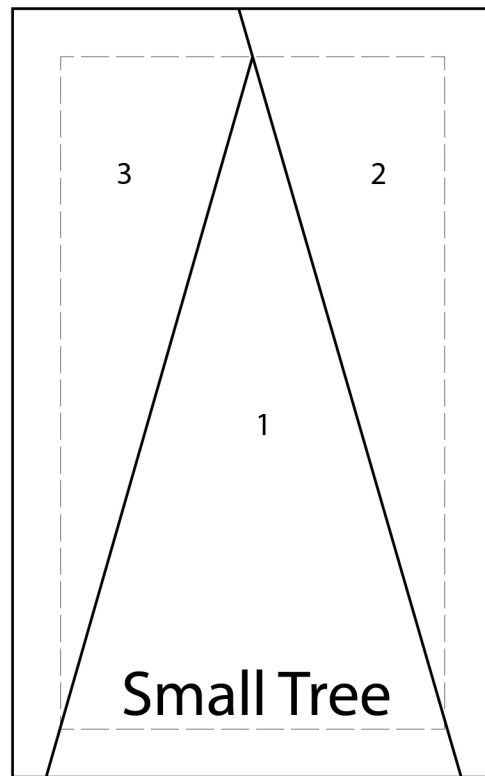
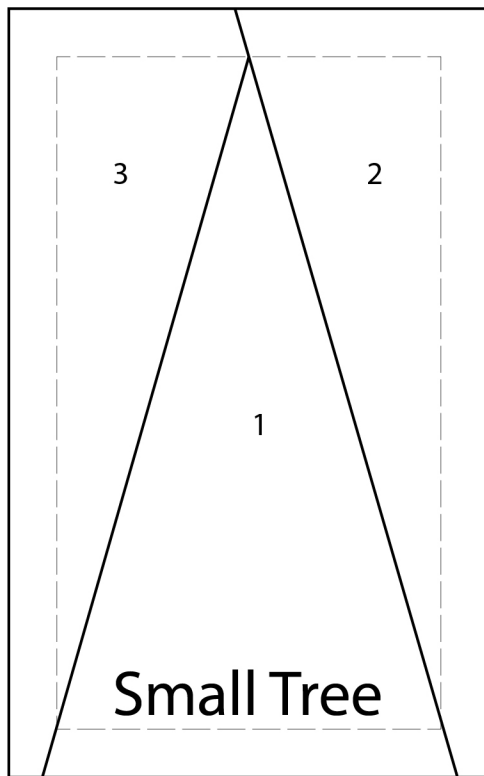
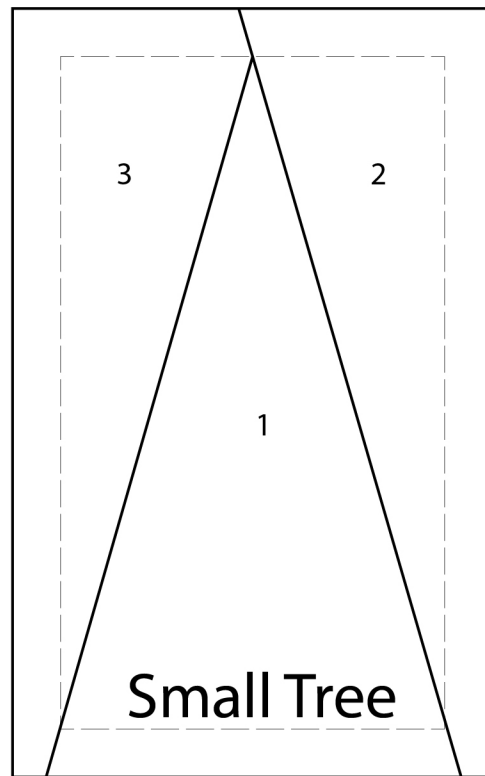
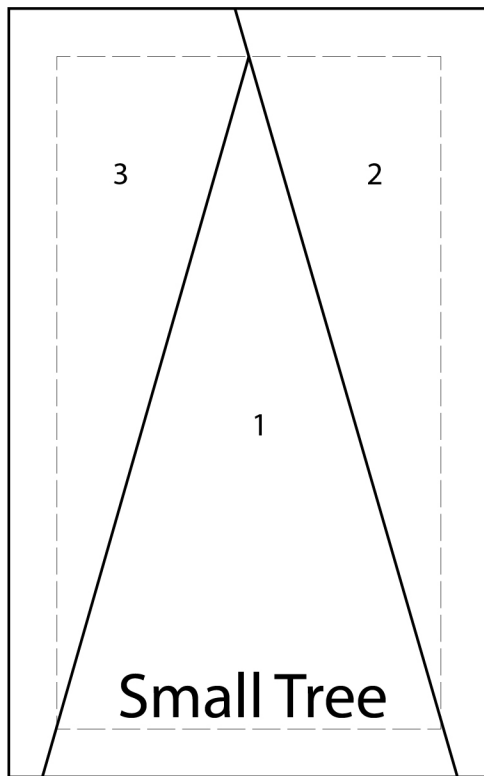
artgalleryfabrics.com

NOTE: While all possible care has been taken to ensure the accuracy of this pattern, We are not responsible for printing errors or the way in which individual work varies. Please read instructions carefully before starting the construction of this quilt. If desired, wash and iron your fabrics before starting to cut.

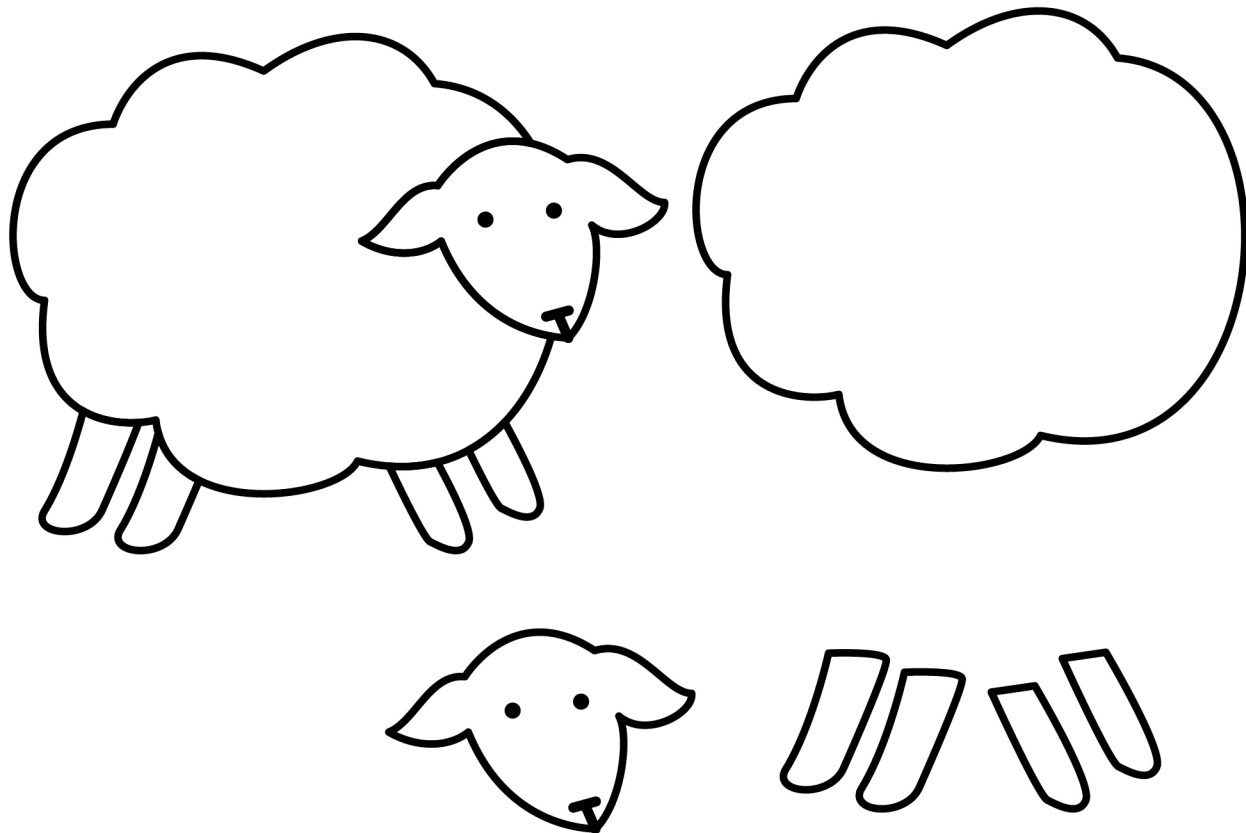
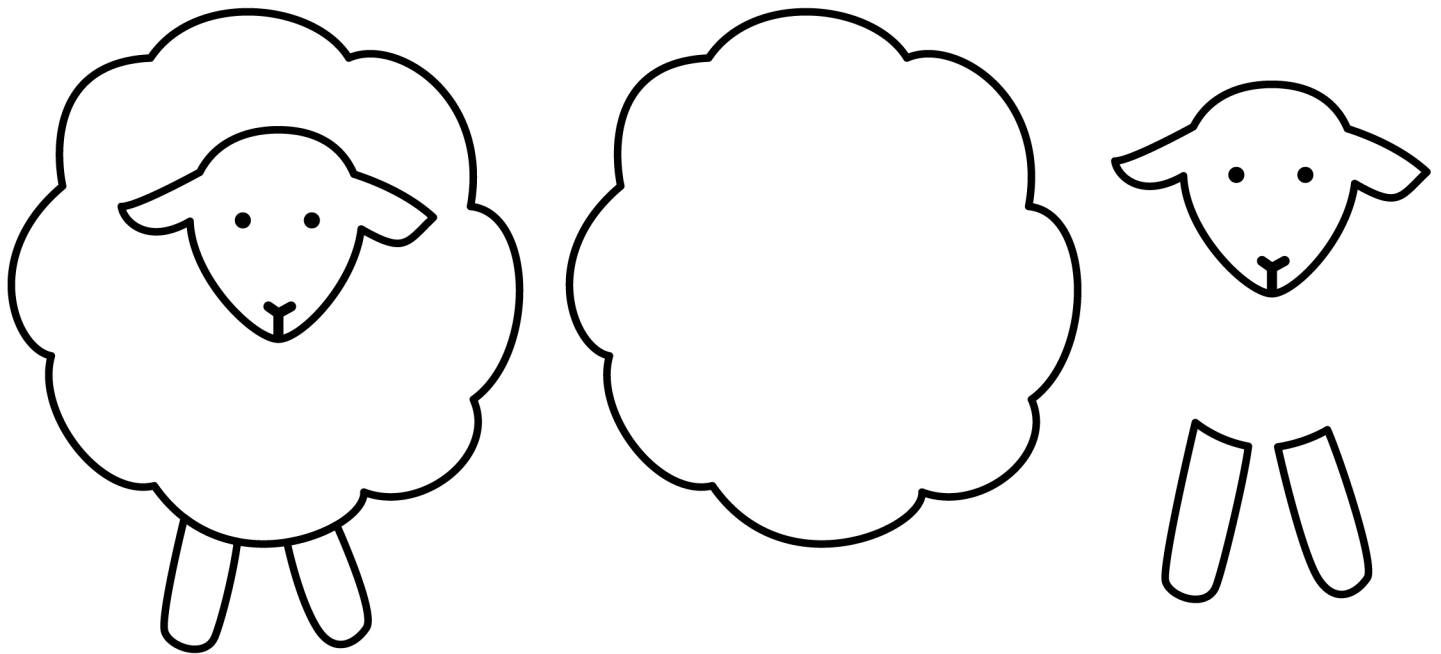




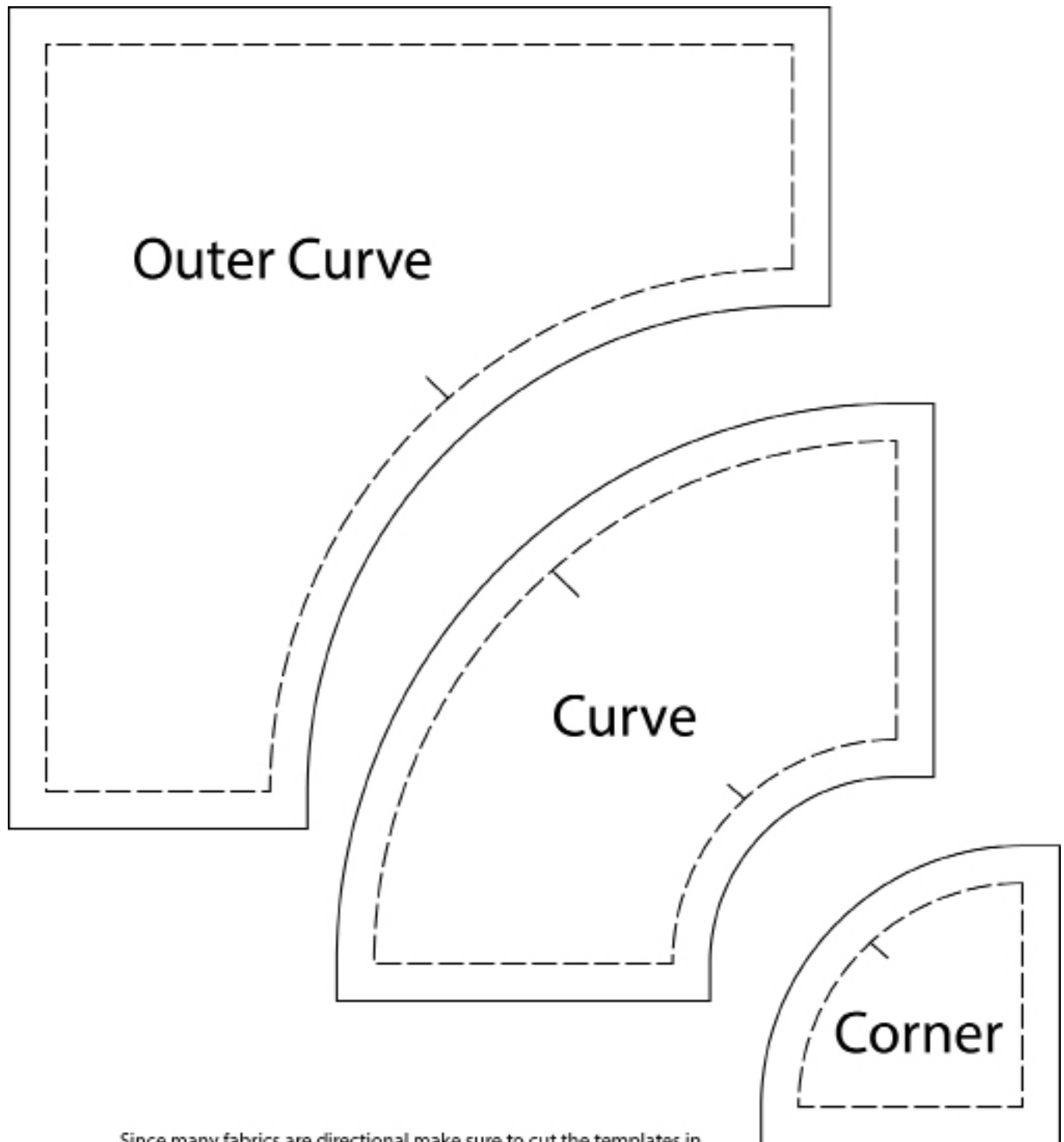




Sheep Applique Templates



Flip pattern pieces to get sheep going the other direction.



Since many fabrics are directional make sure to cut the templates in the orientation shown in the diagrams.