

MONDE



capsules
by AGF

MONDE

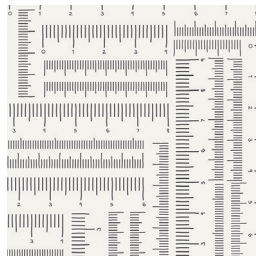


WALL ART DESIGNED BY *AGFstudio*



raise THE volume

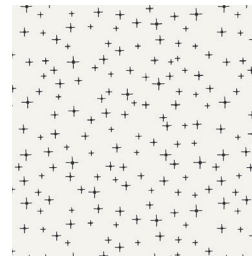
FABRICS DESIGNED BY AGF STUDIO



CAP-RV-8000
MEASURED TEMPO



CAP-RV-8001
WAVES OF ECHO



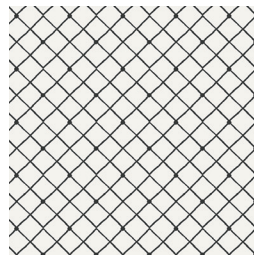
CAP-RV-8002
TWINKLING TUNE



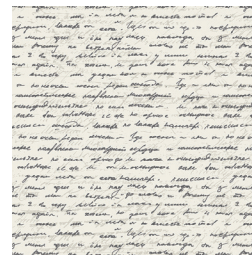
CAP-RV-8003
CITY SOUNDS



CAP-RV-8004
WHITE NOISE



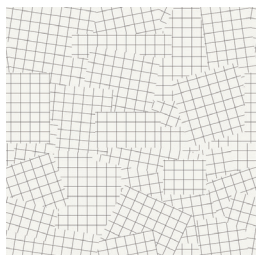
CAP-RV-8005
HARMONY FENCE



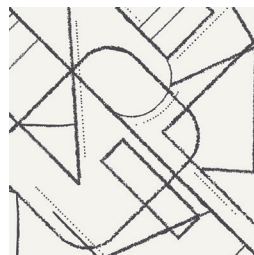
CAP-RV-8006
LYRICIST'S DIARY



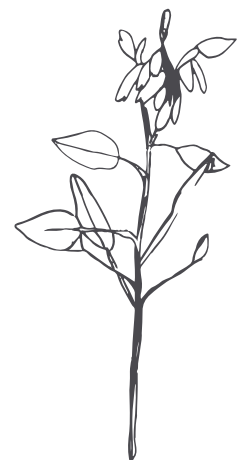
CAP-RV-8007
SONIC FLORA



CAP-RV-8008
PHONOGRAPHIC GRIDS



CAP-RV-8009
FONT AND FREQUENCY



FEEL THE DIFFERENCE © 2017 Courtesy of Art Gallery Quilts LLC. All Rights Reserved.

MONDE

FINISHED SIZE | 24" x 35"

FABRIC REQUIREMENTS

Fabric A	DEN-S-2000	¾ yd.
Fabric B	PE- 419	FE
Fabric C	PE-410	¼
Fabric D	CAP-RV-8004	FE.
Fabric E	CAP-RV-8001	⅓yd.
Fabric F	CAP-RV-8009	½yd.
Fabric G	CAP-RV-8008	FE
Fabric H	CAP-RV-2005	FE

BACKING FABRIC

DEN-S-2000 ¾ yd. *(Suggested)*

BINDING FABRIC

CAP-RV-8009 (Fabric **F**) *(included)*

CUTTING DIRECTIONS

*¼" seam allowances are included.
WOF means width of fabric.*

- Cut one 24½" x 35½" rectangle from fabric **A**
- Cut one (1) 14½ x 6" rectangle from fabric **B**
- Cut one (1) 12 ½ x 6½" rectangle from fabric **C**
- Cut one (1) 10½ x 5 ½" rectangle from fabric **C**
- Cut one (1) 14 ½ x 6 rectangle from fabric **D**
- Cut one (1) 9 ½ x 10½" rectangle from fabric **E**
- Cut one (1) 14½ x 6" from fabric **E**
- Cut one (1) 12 ½" square from fabric **F**
- Cut one (1) 14½ x 6" rectangle from fabric **F**

- Cut one (1) 6" square. **G**
- Cut one (1) 10½" x 6" rectangle from fabric **H**

CONSTRUCTION

Sew all rights sides together with ¼" seam allowance.

- Create the following blocks using all the fabric rectangles and strips you cut.
- To create North and South America block use Fabric **B** 14½ x 6", Fabric **H** 10 ½ x 6", Fabric **D** 14½ x 6", Fabric **C** 10 ½ x 6" and Fabric **F** 14 ½ x 6"
- Follow the diagram below for fabric attachment.

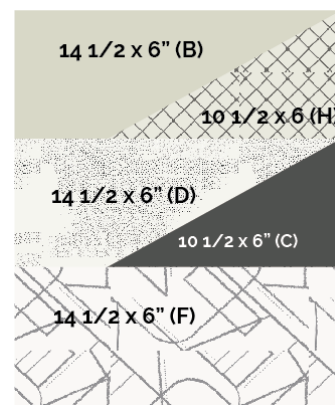


DIAGRAM 1

- Start the assembly of the rectangles that have the contrasting fabric color on the side corners.
- Attach fabric **B** rectangle with the 10 1/2' x 6 fabric **H** piece, It is really simple! Think about half square triangles when you assemble this.
- Refer to the diagram below for proper fabric attachment.

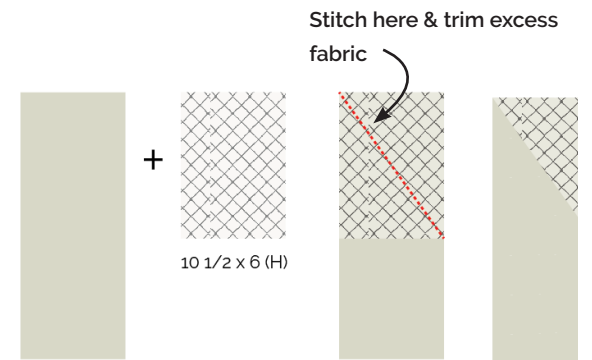


DIAGRAM 2

DONT FORGET: right sides facing together when attaching fabric)

- Repeat the same technique using fabric **D** 14½' x 6" and fabric **C** 10 1/2 x 6"
- Attach fabric **F** and the two fabric blocks you just created together, as diagram 1 shows

- Leave the block ready for later.
- Start with Asia block .
- Use Fabric **B & F** 12½ Squares and fabric **C** 6½ x 12½ rectangle.
- Create a HST using fabrics **B & F**
- Refer to the diagram below for proper fabric placement and attachment

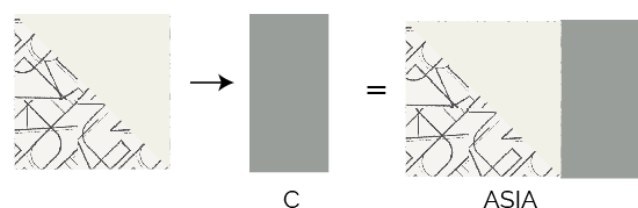
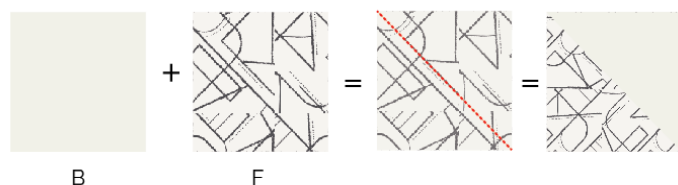


DIAGRAM 3

- Leave the block ready for later.
- Start with Africa block.
- Use fabrics **E** 10 ½ x 9½' and fabric **C** 10½ x 5½'
- Place fabric **C** on top of fabric **E** with bottom corners matching together. Mark a diagonal line in the middle of fabric **C** and stitch. Trim excess and you block should be ready. Refer to the diagram for block assembly.

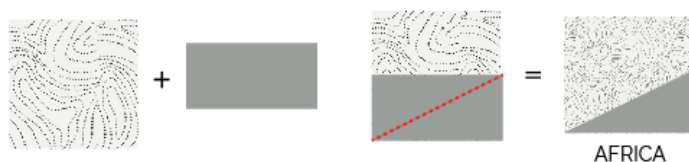


DIAGRAM 4

- Use Fabric **G** 6' block to cut Australia and all small Islands.
- Once you have all the blocks cut all the continent pieces provided below and tape them together.
- Use steam-a-seam paper or a light weight fusible interfacing to attach all the blocks, this will add stability to the fabric.
- Place the continents on top of the fabric blocks and create your continents!

- Refer to the diagram below for fabric placement and attachment.

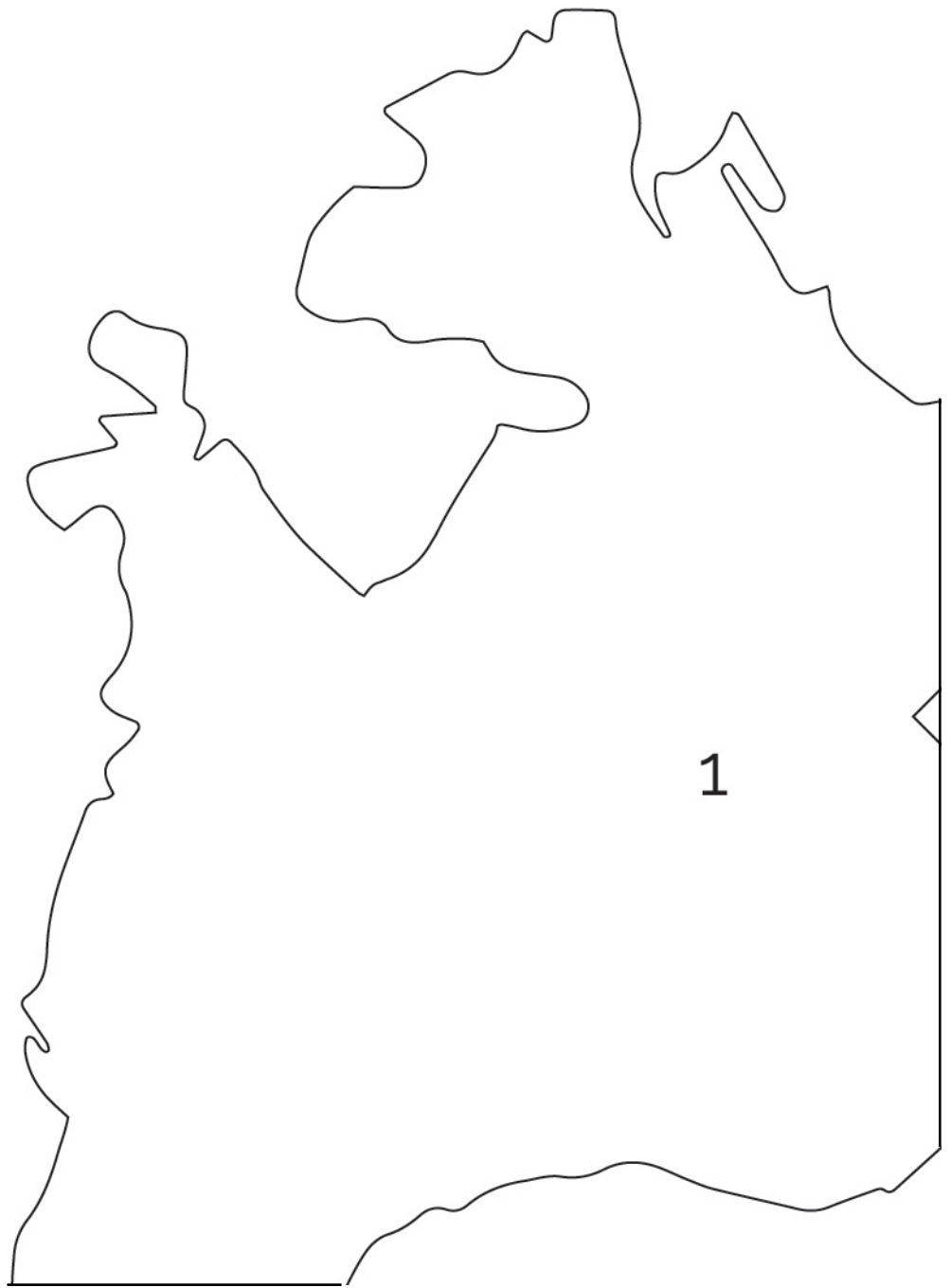


DIAGRAM 5



artgalleryfabrics.com

NOTE: While all possible care has been taken to ensure the accuracy of this pattern, We are not responsible for printing errors or the way in which individual work varies. Please read instructions carefully before starting the construction of this quilt. If desired, wash and iron your fabrics before starting to cut.



XX

