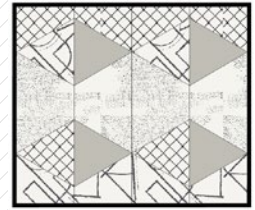


X
X
X
X
X
X
X
X
X
X
X
X
X

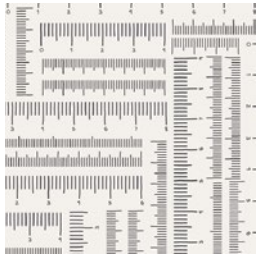
× × × × × × × × × × × × × × × × × × ×

ModernDining



raise THE volume

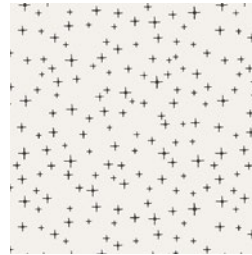
FABRICS DESIGNED BY AGF STUDIO



CAP-RV-8000
MEASURED TEMPO



CAP-RV-8001
WAVES OF ECHO



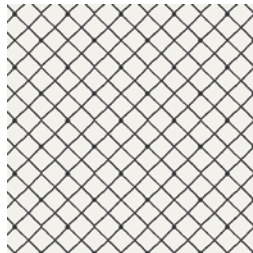
CAP-RV-8002
TWINKLING TUNE



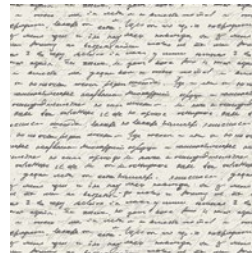
CAP-RV-8003
CITY SOUNDS



CAP-RV-8004
WHITE NOISE



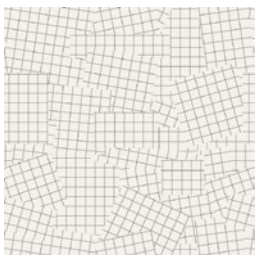
CAP-RV-8005
HARMONY FENCE



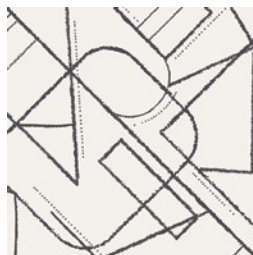
CAP-RV-8006
LYRICIST'S DIARY



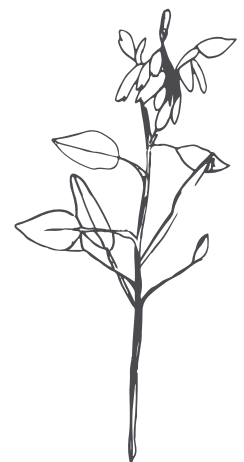
CAP-RV-8007
SONIC FLORA



CAP-RV-8008
PHONOGRAPHIC GRIDS



CAP-RV-8009
FONT AND FREQUENCY



FEEL THE DIFFERENCE © 2018 Courtesy of Art Gallery Quilts LLC. All Rights Reserved.

Modern Dining

FINISHED SIZE | 13½" x 16"

FABRIC REQUIREMENTS

Fabric A	CAP-RV-8005	¼ yd
Fabric B	CAP-RV-8009	¼ yd
Fabric C	CAP-RV-8004	¼ yd
Fabric D	PE-431	¾ yd
Fabric E	CAP-RV-8008	¾ yd
Fabric F	CAP-RV-8000	¼ yd
Fabric G	CAP-RV-8002	¼ yd

BINDING FABRIC

PE-413 ¼ yd *(Included)*

BACKING FABRIC

CAP-RV-8005 *(Suggested)*

CAP-RV-8009 *(For 2nd Placemat, Suggested)*

CUTTING DIRECTIONS

¼" seam allowances are included.
WOF means width of fabric.

Six (6) of Template 1 from fabric **A,B**

Six (6) of Template 1 from fabric **C,F,G**

Two (2) of Template 1 from fabric **D,E**

CONSTRUCTION

Sew all rights sides together with ¼" seam allowance.

- Follow diagram for the each column assembly for fabrics **A,B,C,D**

XXXXXXXXXXXXXXXXXXXXXXXXXXXXXXXXXXXX

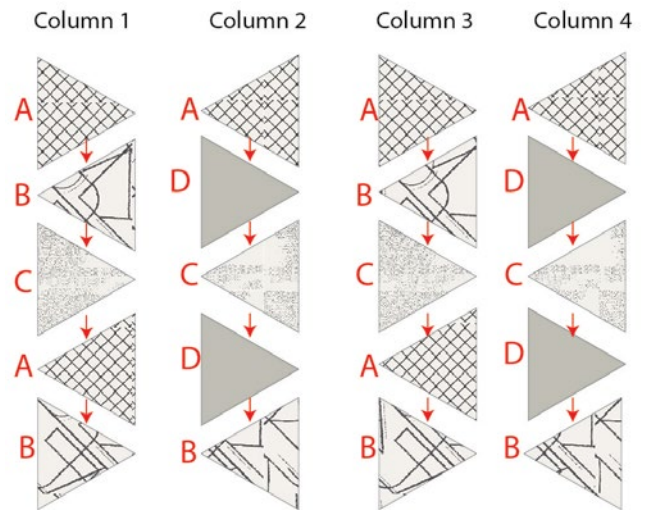
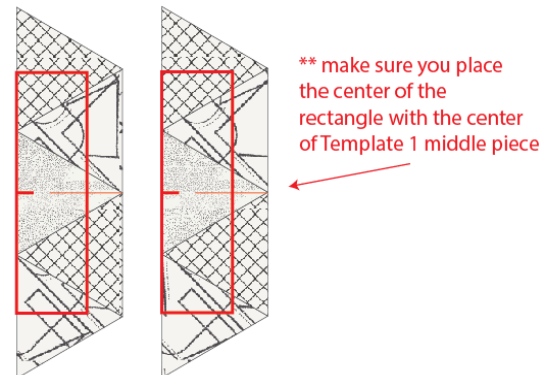


DIAGRAM 1

- Now, mark and trim an 4½" x 14" rectangle on the edge of the left side for Columns 1 and 3
- Repeat the same process but this time marking and trimming an 4 1/2" x 14" rectangle on the edge of the right side for Columns 2 and 4

Column 1 & 3



Column 2 & 4

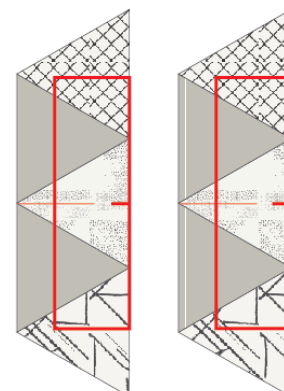


DIAGRAM 2

ASSEMBLING THE TOP

Sew all rights sides together with 1/4" seam allowance. Press open.

- Once you have trimmed the four pieces, assemble them as diagram below

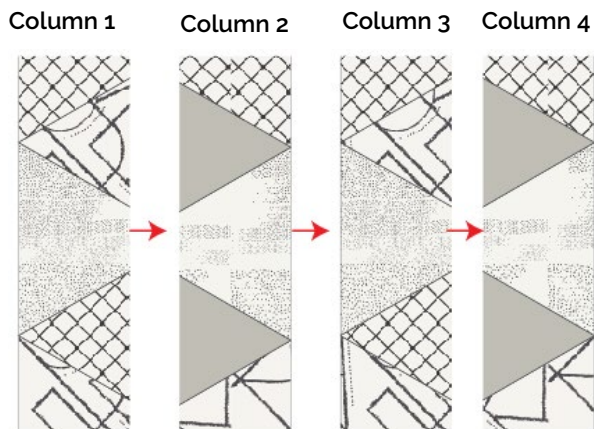
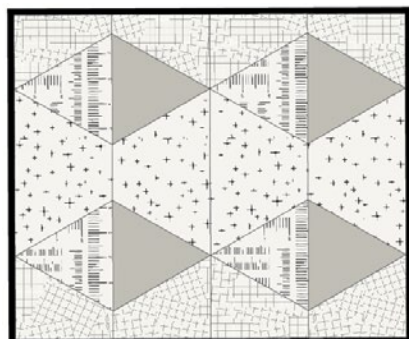
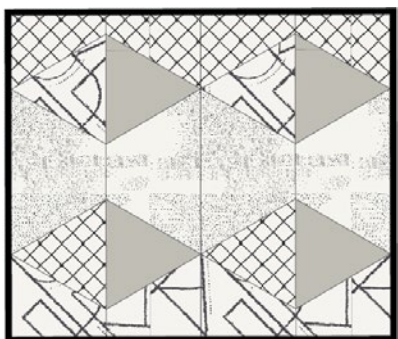


DIAGRAM 3

- Once you have your placemat completed, quilt as desired.
- And, if you want to create your other placemat, just follow the same direction as above.



QUILT ASSEMBLY

Sew rights sides together.

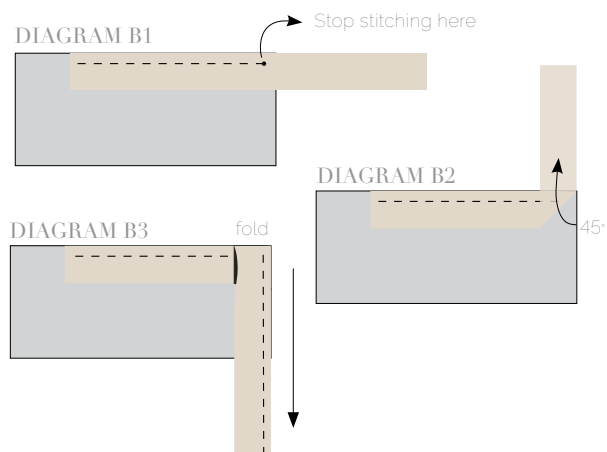
- Place BACKING FABRIC on a large surface wrong side up. Stretch it with masking tape against that surface.
- Place BATTING on top of backing fabric.
- Place TOP on top of the batting with right side facing up. Smooth away wrinkles using your hands.
- Pin all layers together and baste with basting thread, using long stitches. You can also use safety pins to join the layers.
- Machine or hand quilt starting at the center and working towards the corners. Remember that quilting motifs are a matter of personal preference. Have fun choosing yours!
- After you finished, trim excess of any fabric or batting, squaring the quilt to proceed to bind it.

BINDING

Sew rights sides together.

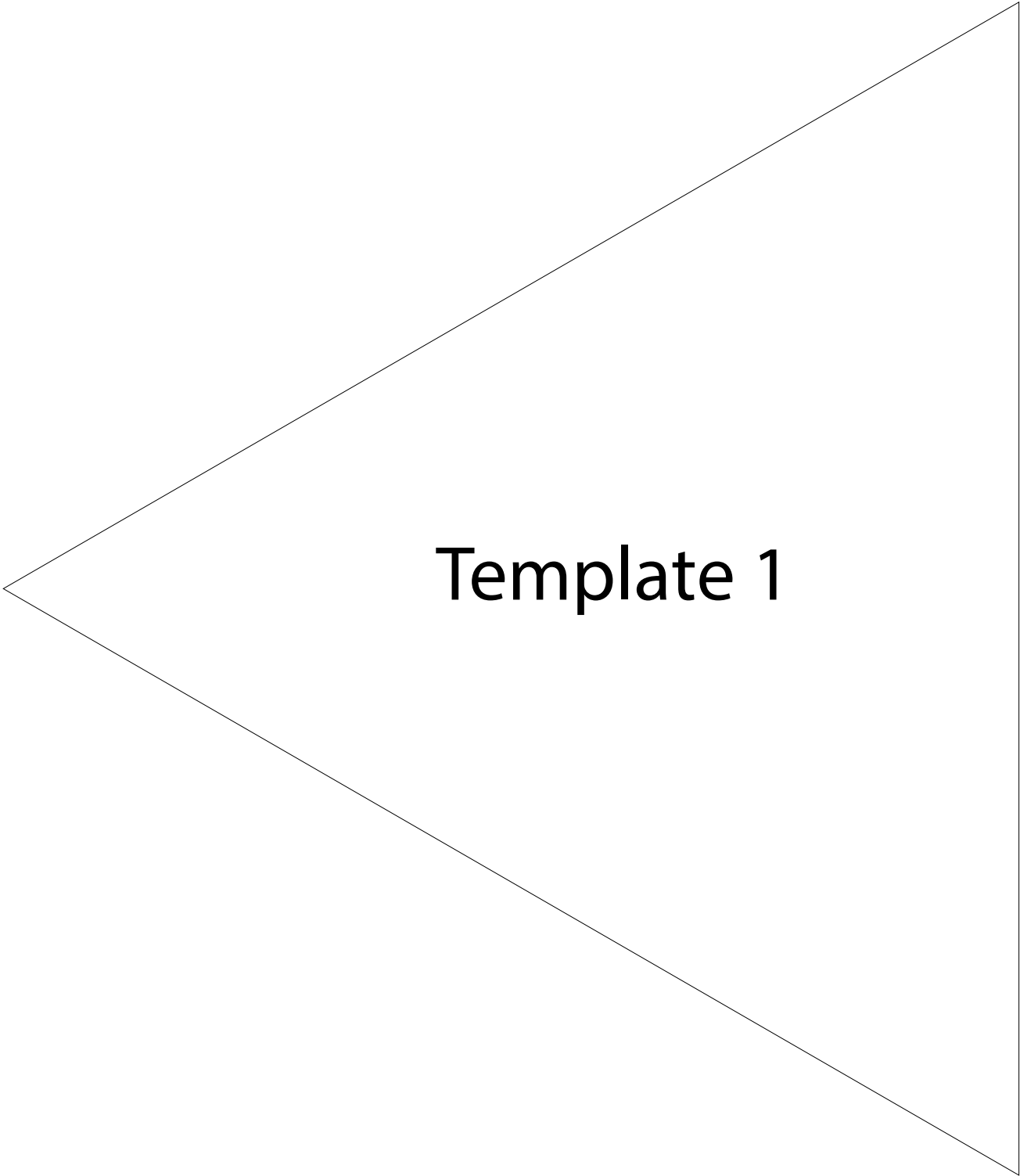
- Cut enough strips 1 1/2' wide by the width of the fabric **H** to make a final strip 69' long. Start sewing the binding strip in the middle of one of the sides of the quilt, placing the strip right side down and leaving an approximated 5' tail. Sew with 1/4' seam allowance (using straight stitch), aligning the strip's raw edge with the place mat top's raw edge.
- Stop stitching 1/4' before the edge of the place mat (**DIAGRAM B 1**). Clip the threads. Remove the quilt from under the machine presser foot. Fold the strip in a motion of 45° and upward, pressing with your fingers (**DIAGRAM B 2**). Hold this fold with your finger, bring the strip down in line with the next edge, making a horizontal fold that aligns with the top edge of the quilt (**DIAGRAM B 3**). Start sewing at 1/4' of the border, stitching all the layers. Do the same in the four corners of the place mat.

- Stop stitching before you reach the last 5 or 6 inches. Cut the threads and remove the place mat from under the machine presser foot. Lay the loose ends of the binding flat along the place mat edge, folding the ends back on themselves where they meet. Press them together to form a crease. Using this crease as the stitching line, sew the two open ends of the binding with right sides together (you can help yourself marking with a pencil if the crease is difficult to see).
- Trim seam to $\frac{1}{4}$ " and press open. Complete the sewing. Turn binding to back of the place mat, turn raw edge inside and stitch by hand using blind stitch.



artgalleryfabrics.com

NOTE: While all possible care has been taken to ensure the accuracy of this pattern, We are not responsible for printing errors or the way in which individual work varies. Please read instructions carefully before starting the construction of this quilt. If desired, wash and iron your fabrics before starting to cut.



Template 1