

X  
X  
X  
X  
X  
X  
X  
X  
X  
X  
X  
X

## A close-up photograph of a quilted pillow with a black, white, and grey geometric pattern. The pattern features large triangles and squares, some with small black dots or stars. The pillow is resting on a dark, textured surface.

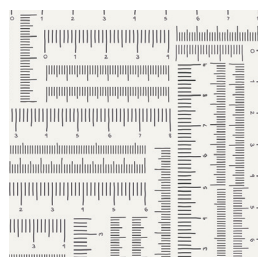
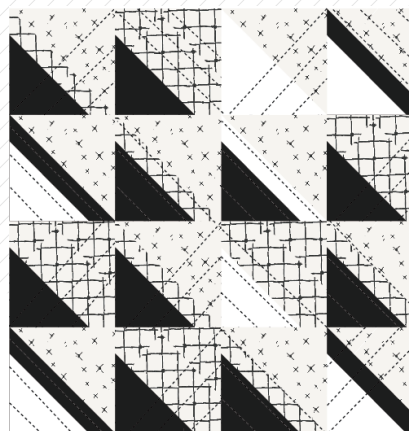
× × × × × × × × × × × × × × × × × × ×

# CUTOFF

PILLOW DESIGNED BY AGFstudio

## raise THE volume

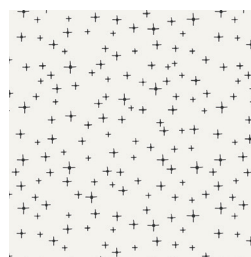
FABRICS DESIGNED BY AGF STUDIO



CAP-RV-8000  
MEASURED TEMPO



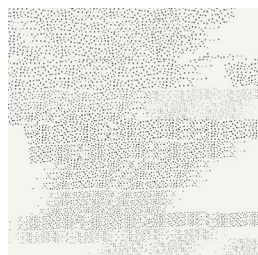
CAP-RV-8001  
WAVES OF ECHO



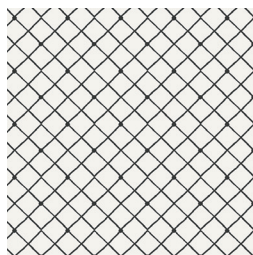
CAP-RV-8002  
TWINKLING TUNE



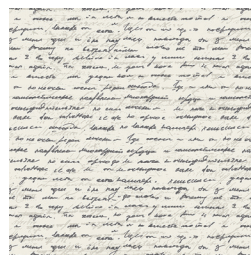
CAP-RV-8003  
CITY SOUNDS



CAP-RV-8004  
WHITE NOISE



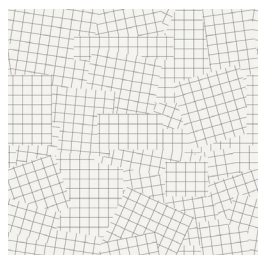
CAP-RV-8005  
HARMONY FENCE



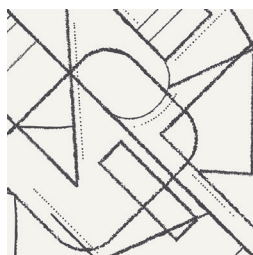
CAP-RV-8006  
LYRICIST'S DIARY



CAP-RV-8007  
SONIC FLORA



CAP-RV-8008  
PHONOGRAPHIC GRIDS



CAP-RV-8009  
FONT AND FREQUENCY



FEEL THE DIFFERENCE © 2017 Courtesy of Art Gallery Quilts LLC. All Rights Reserved.

# CUTOFF

FINISHED SIZE | 16 x 16"

## FABRIC REQUIREMENTS

Fabric **A** CAP-RV-8002  $\frac{1}{6}$  yd.  
 Fabric **B** CAP-RV-8005  $\frac{1}{4}$  yd  
 Fabric **C** PE - 433  $\frac{1}{6}$  yd  
 Fabric **D** PE-413  $\frac{1}{4}$  yd

**BACKING FABRIC**  
 CAP-RV-8002  $\frac{3}{4}$  yd. *(Suggested)*

## CUTTING DIRECTIONS

$\frac{1}{4}$ " seam allowances are included.  
 WOF means width of fabric.

- Cut eight (8) 5" squares from fabric **A**
- Cut one (1) 4  $\frac{7}{8}$ " square from fabric **A**
- Cut two (2) 4  $\frac{7}{8}$ " squares from fabric **B**
- Cut six (6) 5 x 3" strips from fabric **B**
- Cut four (4) 5" squares from fabric **C**
- Cut two (2) 4  $\frac{7}{8}$ " square from fabric **C**
- Cut six (6) 5" squares from fabric **D**
- Cut four (4) 5 x 3" strips from fabric **D**
- Cut two (2) 4  $\frac{7}{8}$ " from fabric **D**

## CONSTRUCTION

*Sew all rights sides together with  $\frac{1}{4}$ " seam allowance.*

- Start with the HST assembly.
- You will use fabric **B & D** to create four (4) HST
- You will use fabrics **B & C** to create one (1) HST
- You will use fabric **A & C** to create one (1) HST
- Now, for the HST assembly, pair the two 4  $\frac{7}{8}$ " squares from Fabric **B and D**
- Place on top with right sides together. Draw a diagonal line from one corner to the other.
- Sew on each side of the line you drew at  $\frac{1}{4}$ ". (DIAGRAM 1)
- Cut on your diagonal line. Press seams open (DIAGRAM 1.1)
- Square off half square triangles to equal 2  $\frac{1}{2}$ " x 2  $\frac{1}{2}$ " (DIAGRAM 1.2)

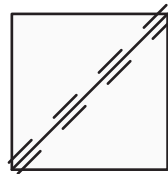


DIAGRAM 1.1

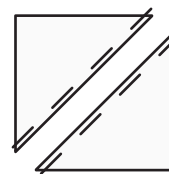


DIAGRAM 1.2



- Repeat the same process until you have four (4) HST
- Repeat the same process with fabrics **A & C** 4  $\frac{7}{8}$ " squares to create two (2) HST.
- Now use template 1 to create the paper pieced blocks.
- You will make two different combinations.
- Combination **(a)**:
  - You will use six (6) 5" squares from fabric **A** and fabric **D** and (6) 5 x 3" strips from fabric **B**
  - You will use six (6) from template 1 ( find them at the end of this instructions) to create the paper pieced blocks.
- If you are new to paper piecing check out this video tutorial on how to paper piece:
- <http://www.agfblog.com/2017/08/paperpiecing-tips-how-to-make-a-crossed-canoesblock-.html>

- You should have six (6) combination **a** 4" blocks

- Combination **(a)** should look like this:



- For combination **b** you will use four (4) 5" squares from fabric **A**, four (4) 5 x 3" strips from fabric **D** and four (4) 5" squares from fabric **C**
- Use four (4) template 1 (provided below) to paper piece four (4) combination **b** blocks.
- Combination **(b)** should look like this:



- Now start the pillow front assembly.
- Use the diagram below for block placement and attachment.

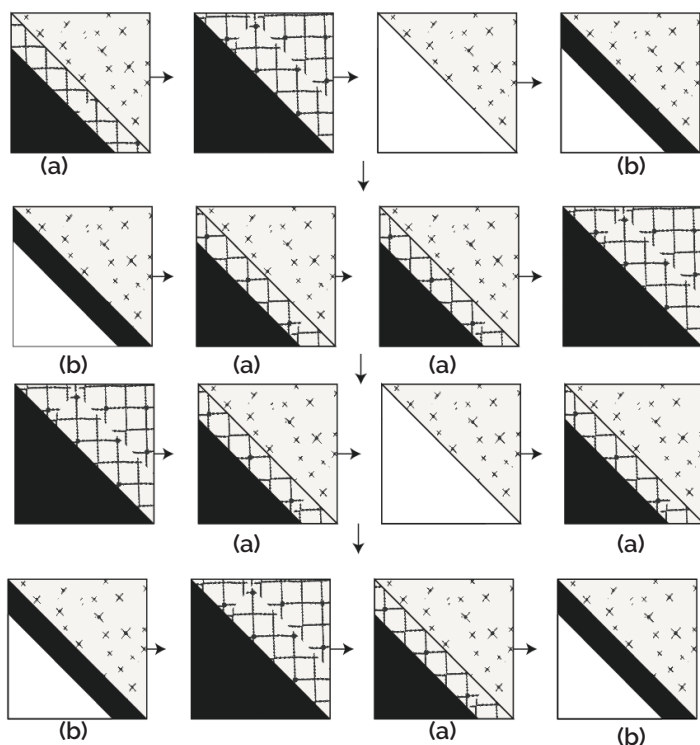


DIAGRAM 4

## QUILT ASSEMBLY

*Sew rights sides together.*

- Pin all layers together and baste with basting thread, using long stitches. You can also use safety pins to join the layers.
- Machine or hand quilt starting at the center and working towards the corners. Remember that quilting motifs are a matter of personal preference. Have fun choosing yours!
- After you finished, trim excess of any fabric or batting, squaring the pillow.

## PILLOW BACKING

*Sew all rights sides together with 1/4" seam allowance. Press open.*

- To make an envelope back for your pillow cut two (2) 16 x 13" rectangles and fold one 13" side on each rectangle in 1/2" and press and then fold another 1/2" and press.
- Top stitch as close to the edge as possible. Place rectangles right side together on top of each other to the front of your pillow and stitch all the way around your pillow at 1/4" seam allowance.
- Clip corners at seam allowance and flip piece to the right side of the fabric.
- Fill pillow with a 20 x 20" pillow form and enjoy!



[artgalleryfabrics.com](http://artgalleryfabrics.com)

NOTE: While all possible care has been taken to ensure the accuracy of this pattern, We are not responsible for printing errors or the way in which individual work varies. Please read instructions carefully before starting the construction of this quilt. If desired, wash and iron your fabrics before starting to cut.

