

# Bear Rug



capsules  
by AGF

FREE PATTERN

XXXXXXXXXXXXXXXXXXXXXXXXXXXX



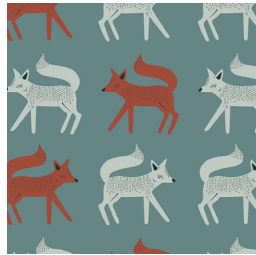
# Bear Rug

DESIGNED BY AGF STUDIO

AGFstudio

# Campsite

FABRICS DESIGNED BY AGF STUDIO



CAP-C-9000  
SNEAKY LITTLE FOXES



CAP-C-9001  
CAMPING STORIES



CAP-C-9002  
WILD GATHERINGS



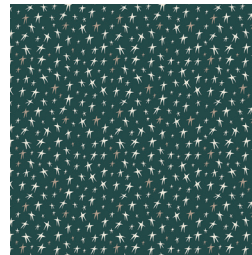
CAP-C-9003  
DANCING DAISIES



CAP-C-9004  
HEATHER & FEATHERS



CAP-C-9005  
HOPPING HARE



CAP-C-9006  
MIDNIGHT WISHES



CAP-C-9007  
FIREFLIES GLOW



CAP-C-9008  
CAMPFIRE SWEETS



CAP-C-9009  
AMONG THE PINES



FEEL THE DIFFERENCE © 2018 Courtesy of Art Gallery Quilts LLC. All Rights Reserved.



FINISHED SIZE | 38" x 57"

## FABRIC REQUIREMENTS

Fabric <b>A</b>	CAP-C-9006	5/8 yd.
Fabric <b>B</b>	CAP-C-9008	1/8 yd.
Fabric <b>C</b>	CAP-C-9000	1 5/8 yd.
Fabric <b>D</b>	PE-413	F8
Fabric <b>E</b>	PE-433	F8
Fabric <b>F</b>	PE-432	1 1/2 yd.

### BACKING FABRIC

DEN 15/8t yds. (Suggested)

### BINDING FABRIC

CAP-C-9006 (Fabric **A**) (included)

## CUTTING DIRECTIONS

1/4" seam allowances are included.  
WOF means width of fabric.

- One (1) template a, b, c from fabric **A**.
- Two (2) templates d from fabric **A**.
- Six (6) templates e from fabric **A**.
- Twelve (12) templates f from fabric **A** and **B**.
- Two (2) templates g from fabric **B**.
- One (1) template h and i from fabric **B**.
- One (1) 38" x 57" rectangle from fabric **C**.
- One (1) template j, k, l, m, n, o and p from fabric **D**.
- Six (6) templates q, r and s from fabric **D**.
- Two (2) templates t and u from fabric **E**.
- One (1) template v from fabric **F**.

## CONSTRUCTION

Sew all rights sides together with 1/4" seam allowance.

- Cut the templates using steam a seam.
- Make sure to cut template v on fold.

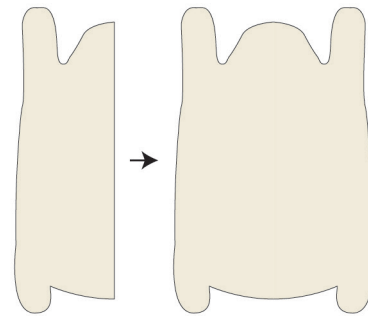


DIAGRAM 1

- Place all the templates following Diagram 2.
- Once all the templates with steam a seam are layered forming the bear, iron your piece.
- Stitch around the templates to secure them.
- Center the bear on top of fabric **C**.
- Stitch around template v to secure the bear on place.



DIAGRAM 2

## QUILT ASSEMBLY

*Sew rights sides together.*

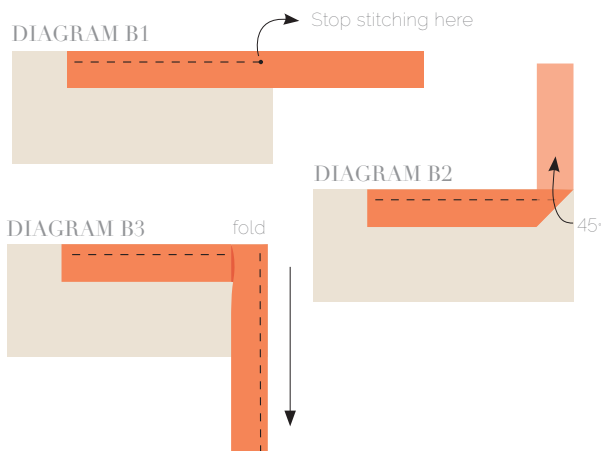
- Place BACKING FABRIC on a large surface wrong side up. Stretch it with masking tape against that surface.
- Place BATTING on top of backing fabric.
- Place TOP on top of the batting with right side facing up. Smooth away wrinkles using your hands.
- Pin all layers together and baste with basting thread, using long stitches. You can also use safety pins to join the layers.
- Machine or hand quilt starting at the center and working towards the corners. Remember that quilting motifs are a matter of personal preference. Have fun choosing yours!
- After you finished, trim excess of any fabric or batting, squaring the quilt to proceed to bind it.

## BINDING

*Sew rights sides together.*

- Cut enough strips  $1\frac{1}{2}$ ' wide by the width of the fabric **A** to make a final strip 200' long. Start sewing the binding strip in the middle of one of the sides of the quilt, placing the strip right side down and leaving an approximated 5" tail. Sew with  $\frac{1}{4}$ " seam allowance (using straight stitch), aligning the strip's raw edge with the quilt top's raw edge.
- Stop stitching  $\frac{1}{4}$ " before the edge of the quilt (**DIAGRAM B 1**). Clip the threads. Remove the quilt from under the machine presser foot. Fold the strip in a motion of  $45^\circ$  and upward, pressing with your fingers (**DIAGRAM B2**). Hold this fold with your finger, bring the strip down in line with the next edge, making a horizontal fold that aligns with the top edge of the quilt (**DIAGRAM B3**). Start sewing at  $\frac{1}{4}$ " of the border, stitching all the layers. Do the same in the four corners of the quilt.

- Stop stitching before you reach the last 5 or 6 inches. Cut the threads and remove the quilt from under the machine presser foot. Lay the loose ends of the binding flat along the quilt edge, folding the ends back on themselves where they meet. Press them together to form a crease. Using this crease as the stitching line, sew the two open ends of the binding with right sides together (you can help yourself marking with a pencil if the crease is difficult to see).
- Trim seam to  $\frac{1}{4}$ " and press open. Complete the sewing. Turn binding to back of the quilt, turn raw edge inside and stitch by hand using blind stitch.

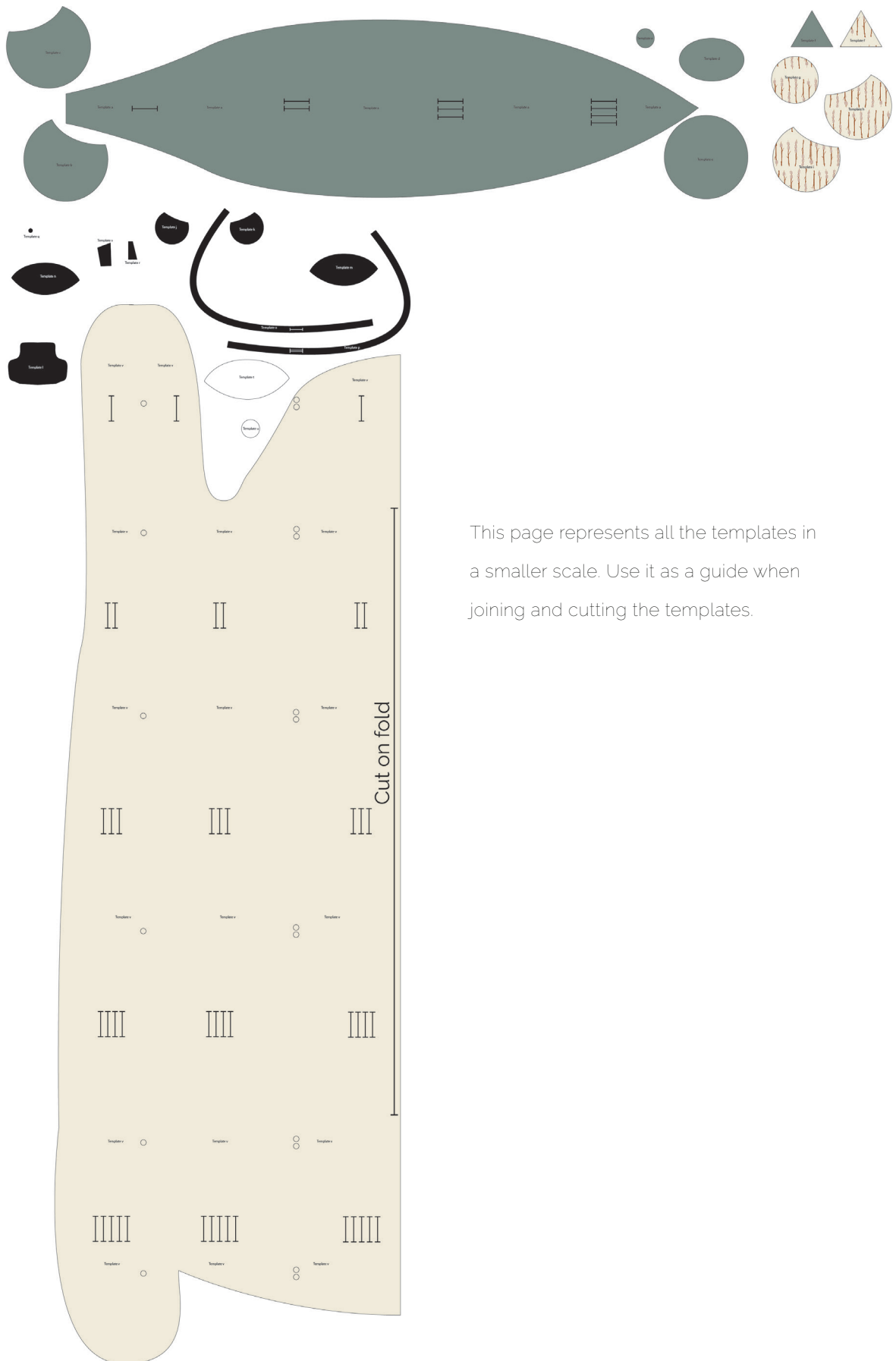


[artgalleryfabrics.com](http://artgalleryfabrics.com)

*NOTE: While all possible care has been taken to ensure the accuracy of this pattern, We are not responsible for printing errors or the way in which individual work varies. Please read instructions carefully before starting the construction of this quilt. If desired, wash and iron your fabrics before starting to cut.*

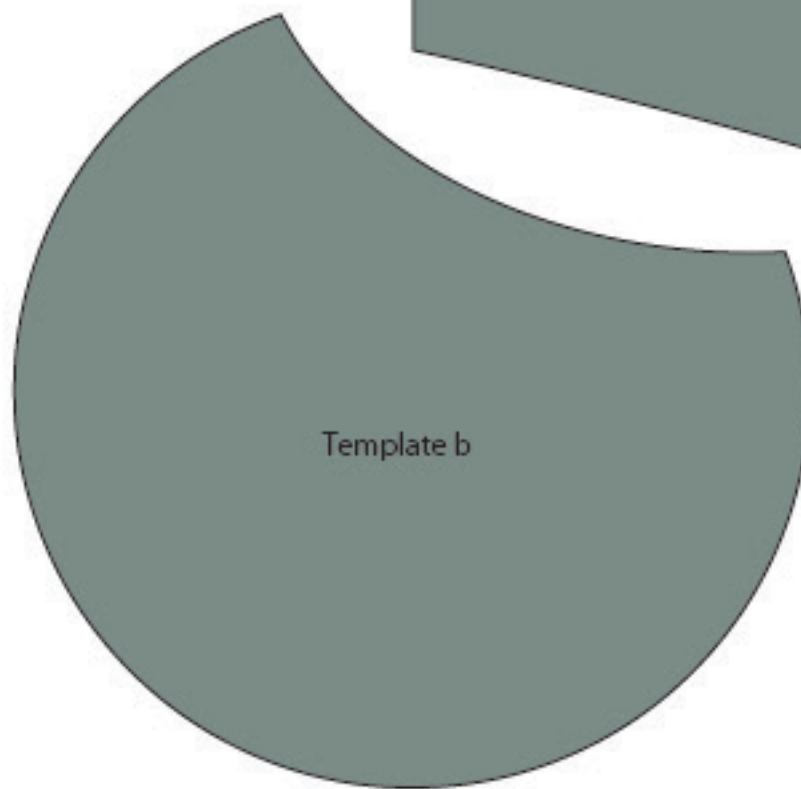
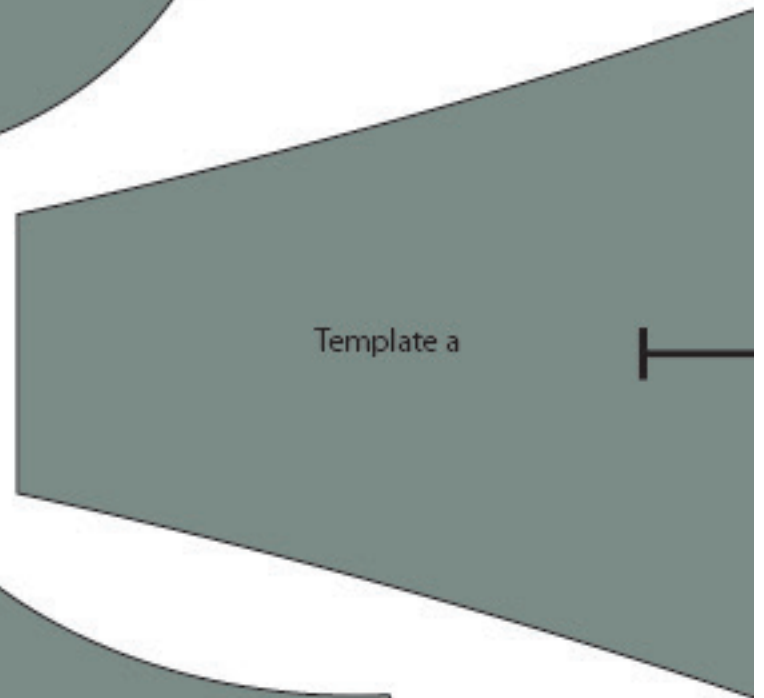
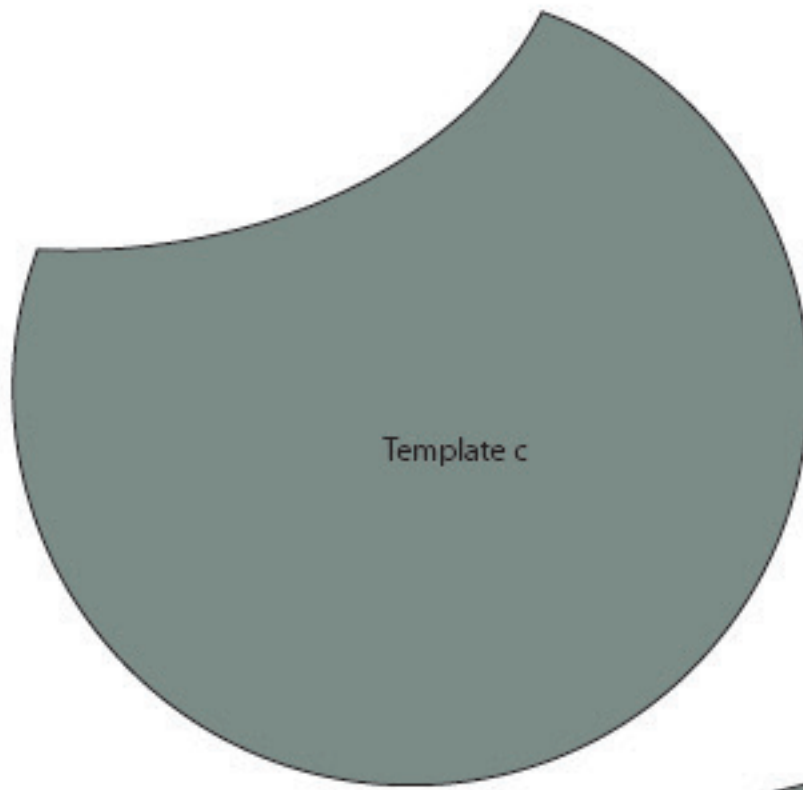
© 2018 Courtesy of Art Gallery Quilts LLC. All Rights Reserved.

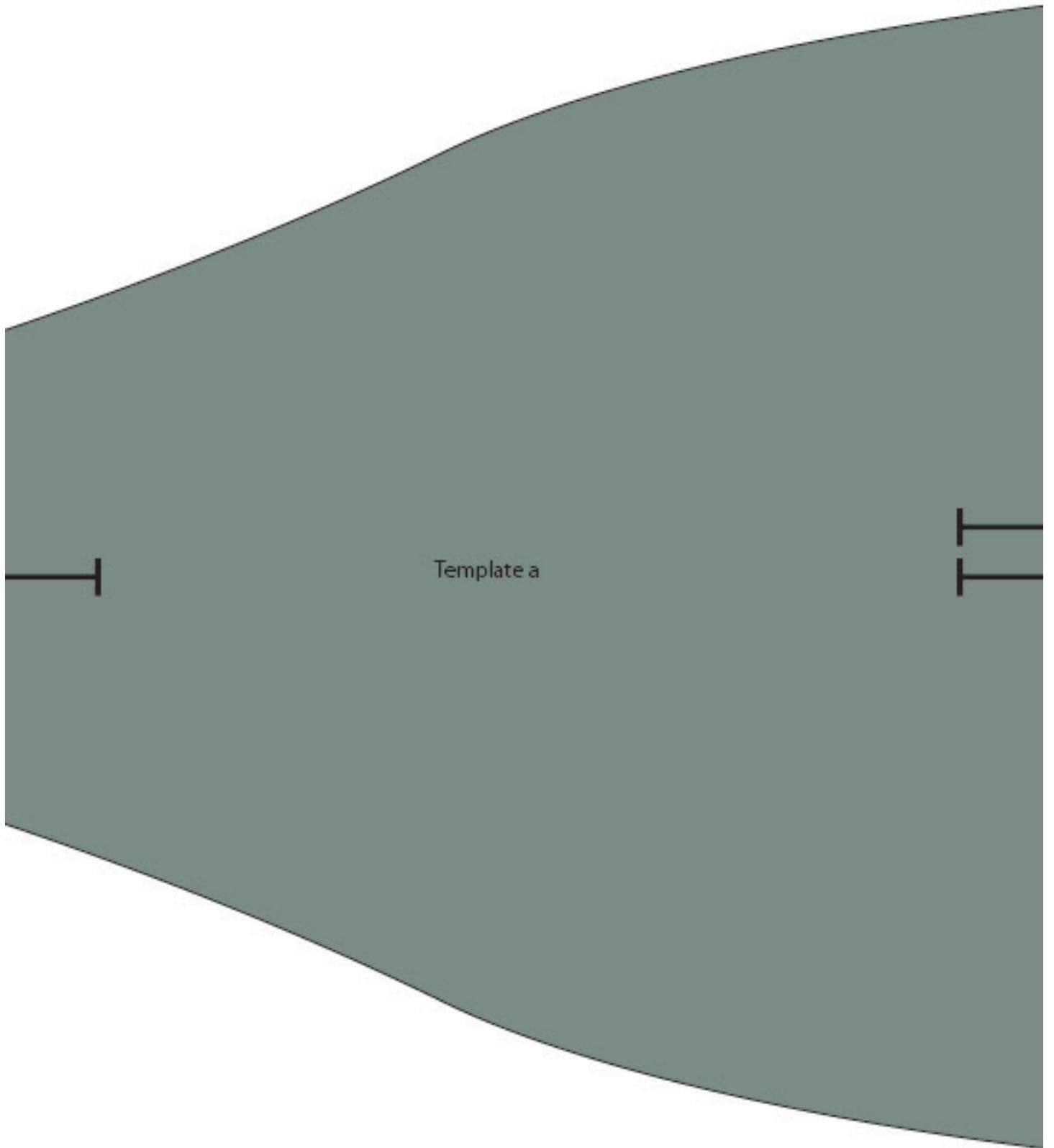
# TEMPLATES



This page represents all the templates in a smaller scale. Use it as a guide when joining and cutting the templates.





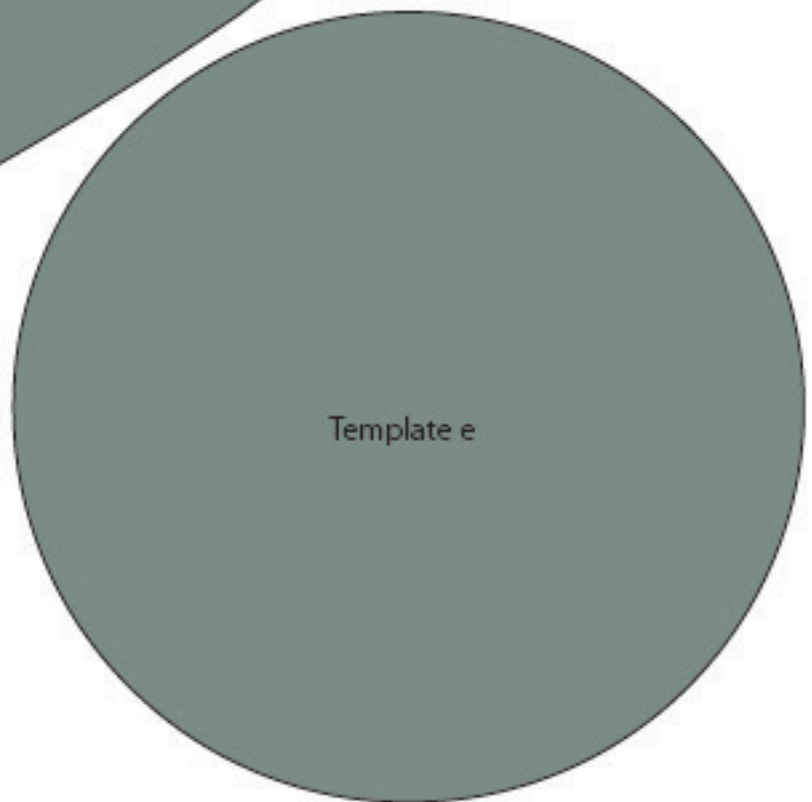
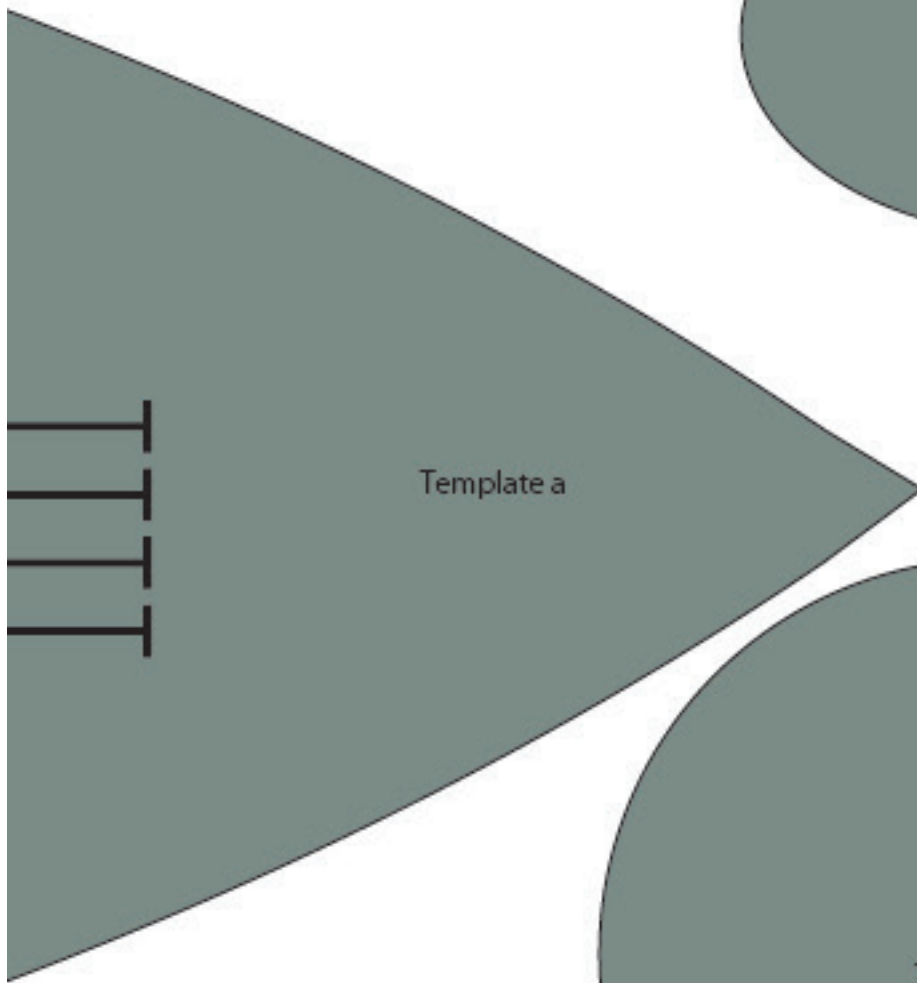
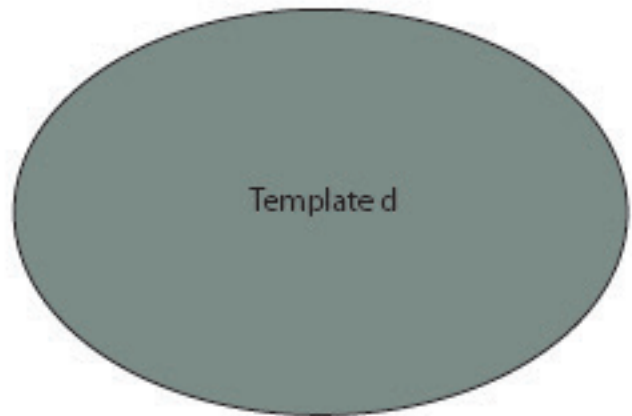


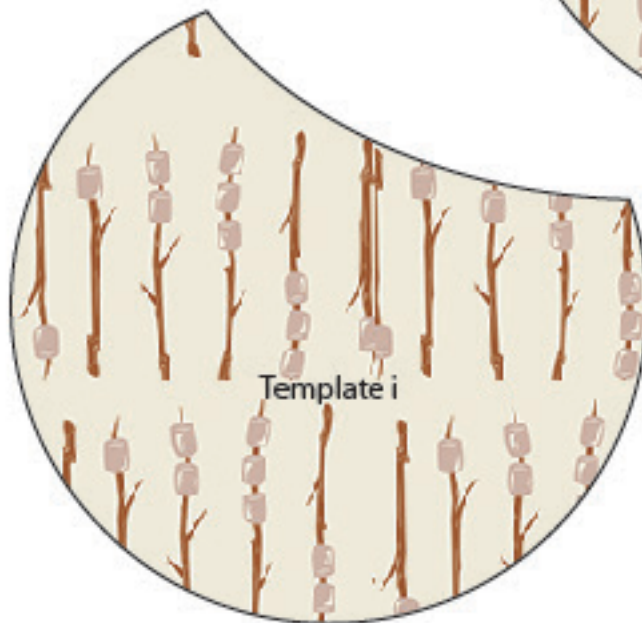
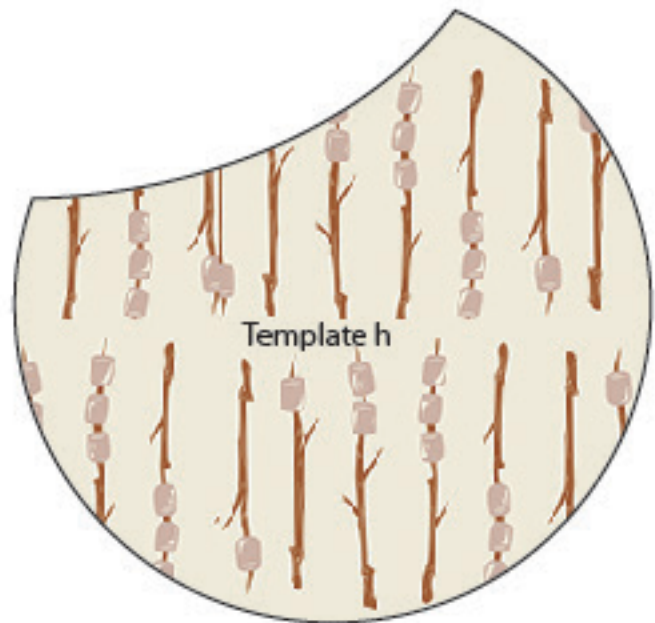
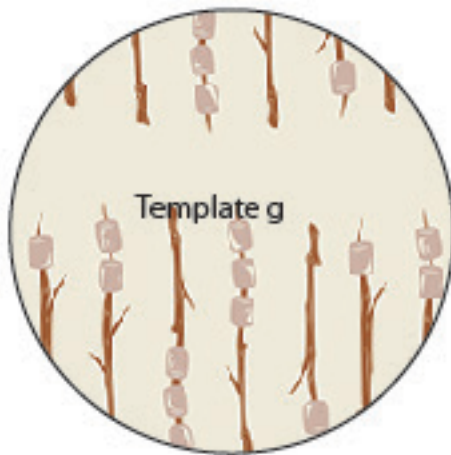
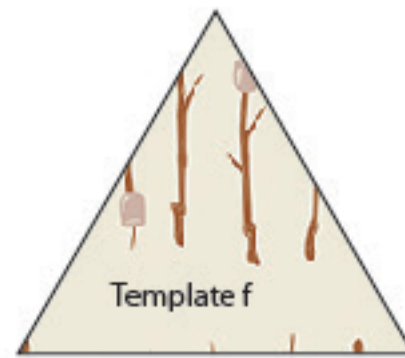
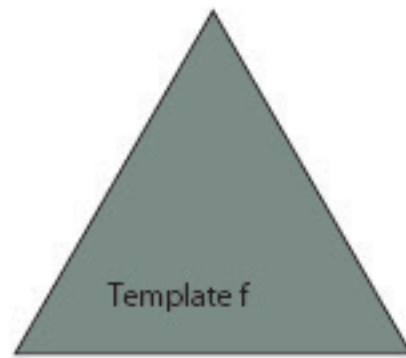
Template a

Template a













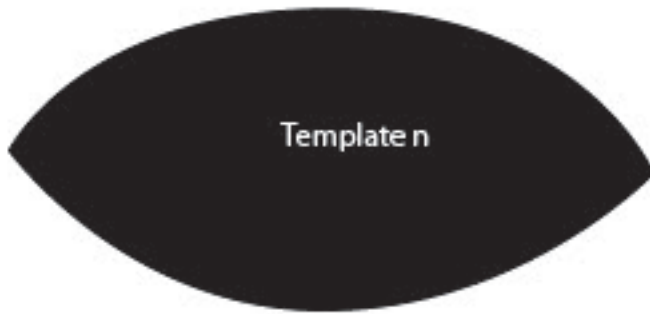
Template q



Template s



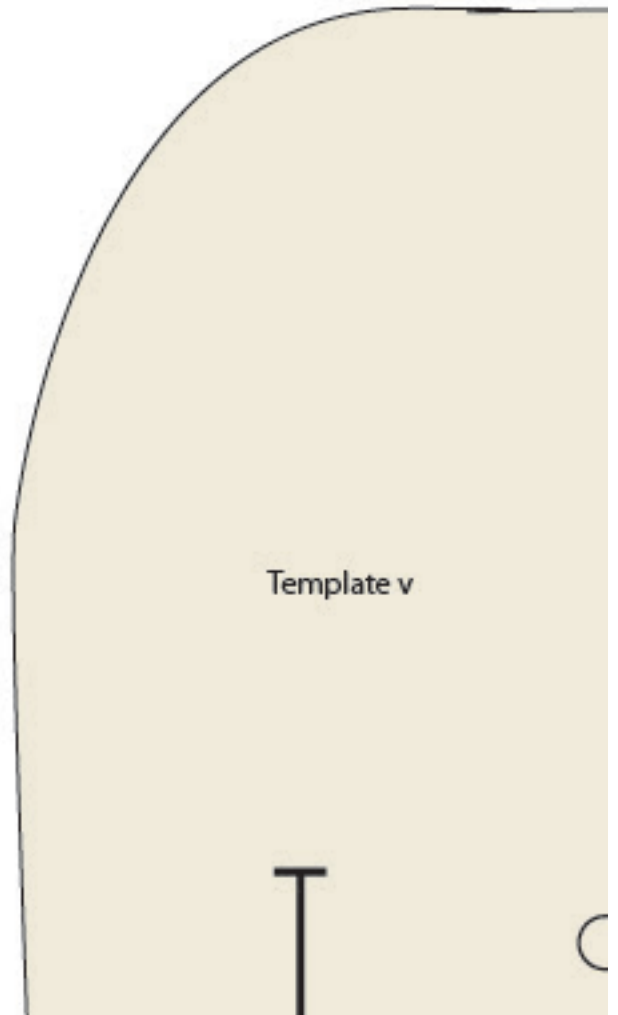
Template r



Template n

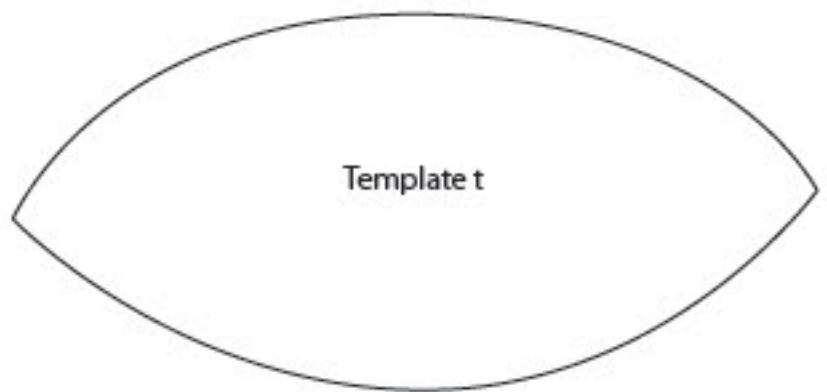
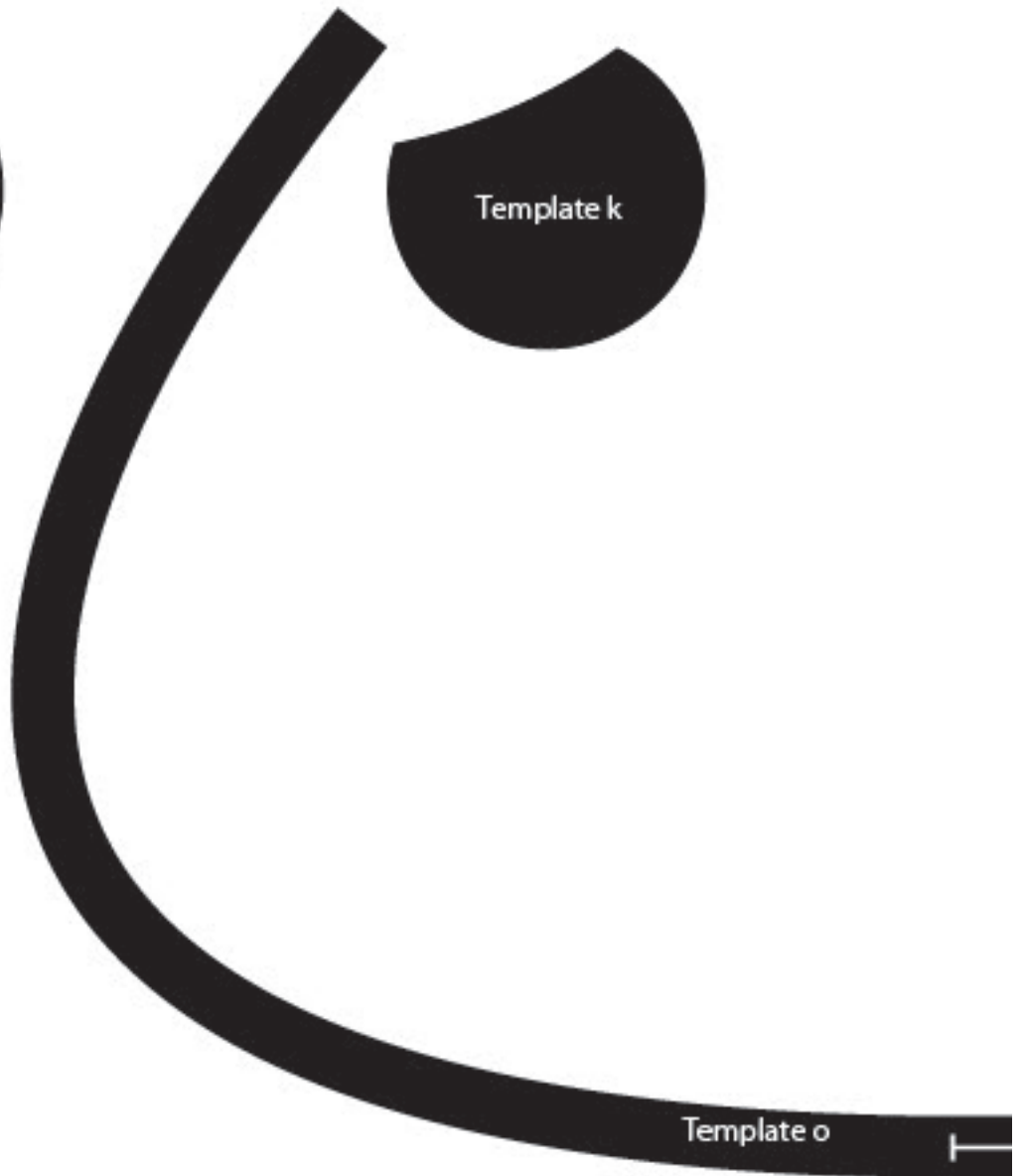
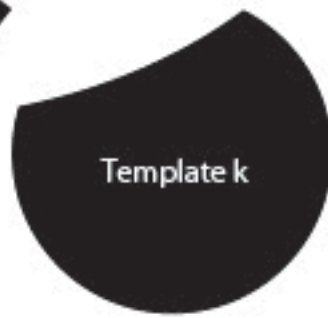


## Template I



Template v

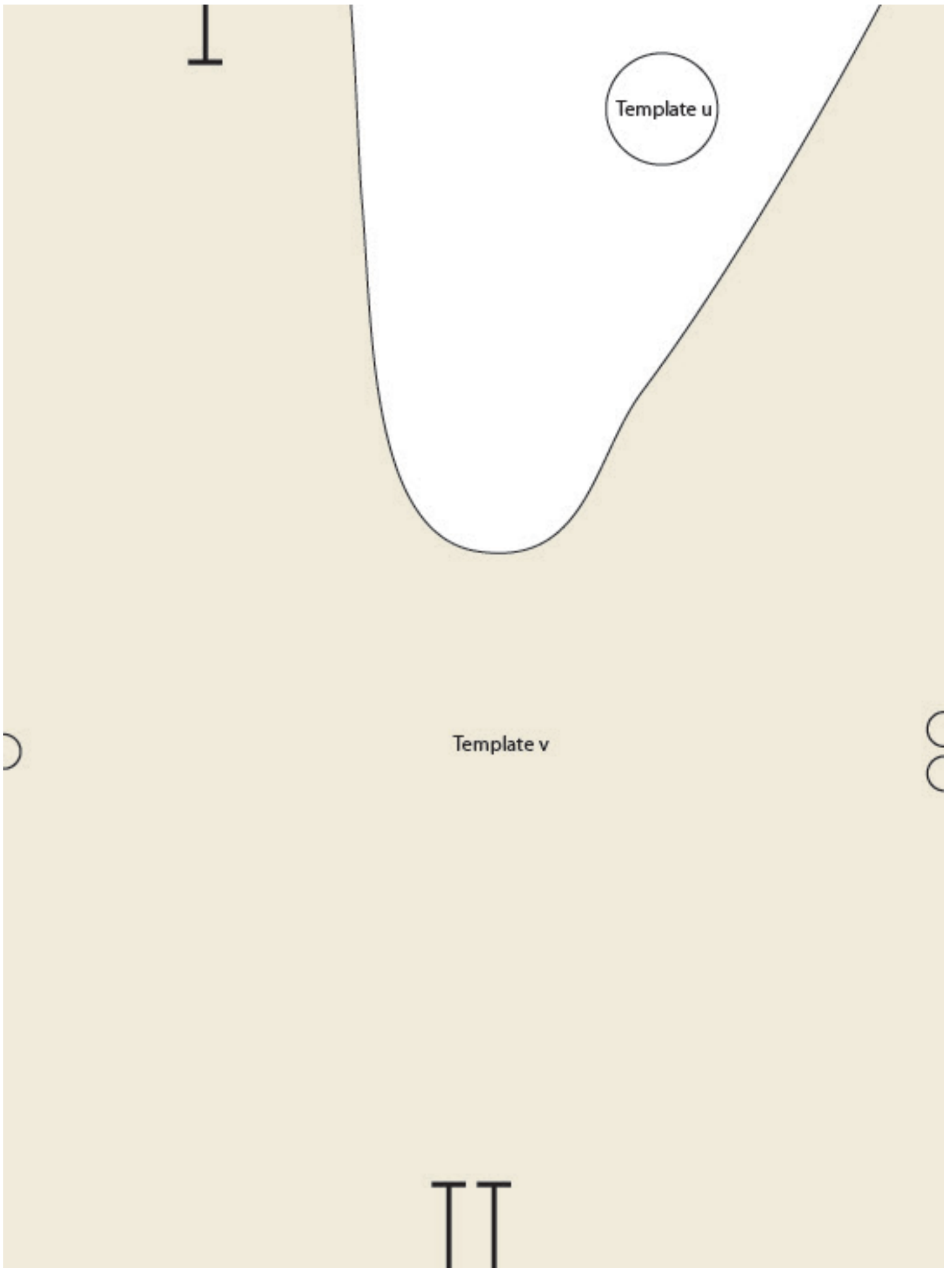






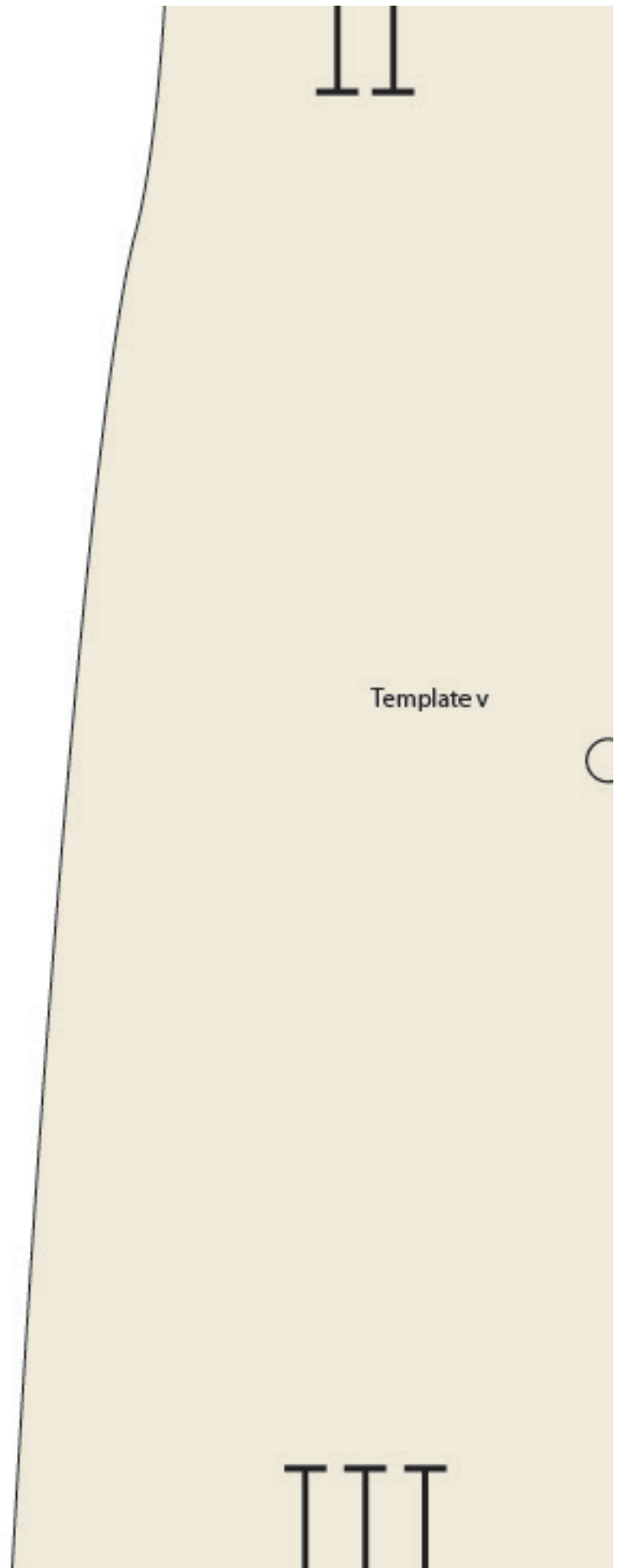












○

CC

TTT

11

Cut on fold

III





XX

1 1 1

Template v

\_\_\_\_\_





Template v











