

A large, colorful quilted wall hanging is displayed against a white wall. The quilt features a complex geometric pattern in black, white, red, and blue. It has a wide black fringe border at the bottom and a red triangle design in the center. The quilt is hanging from a white cord. In the bottom left corner, a portion of a colorful, patterned blanket is visible.

Pretty Dayz

WALL ART DESIGNED BY AGF STUDIO

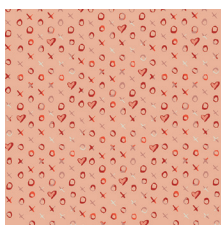


FABRICS DESIGNED BY MAUREEN CRACKI

ENAMEORED



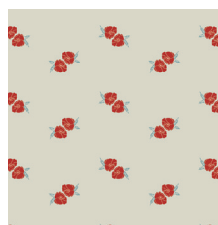
LVS-38800
REFLECTION OF LOVE LIGHT



LVS-38801
HUGS & KISSES WARM



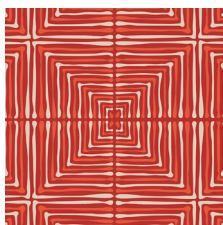
LVS-38802
DARING TRIBAL NOIR



LVS-38803
FLOWER STAMP CHARM



LVS-38804
SOULMATE BLOOMS LUST



LVS-38805
DARLING ECHOES RED



LVS-38806
DELICATE VEIL



LVS-38801
HUGS & KISSES WARM



LVS-38808
COMPASSION TEAL

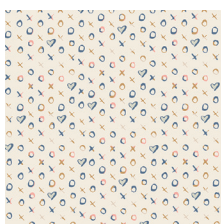


LVS-38809
LOVEBIRDS CELESTE

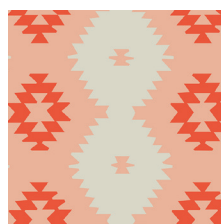
ENCHANTED



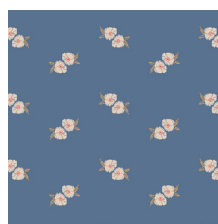
LVS-48800
REFLECTION OF LOVE DEEP



LVS-48801
HUGS & KISSES FRESH



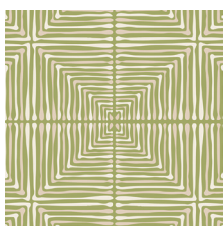
LVS-48802
DARING TRIBAL SUNSET



LVS-48803
FLOWER STAMP SPELL



LVS-48804
SOULMATE BLOOMS FLIRT



LVS-48805
DARLING ECHOES VERT



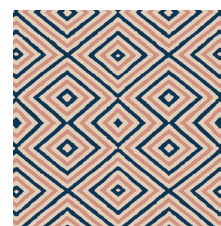
LVS-48807
HEARTS FLETCHING GOLD



LVS-48808
COMPASSION RUBY



LVS-48809
LOVEBIRDS AMBER



LVS-48810
MIXED EMOTIONS



FEEL THE DIFFERENCE © 2016 Courtesy of Art Gallery Quilts LLC. All Rights Reserved.



FINISHED SIZE | 30" x 50"

FABRIC REQUIREMENTS

Fabric A	LVS-38805	FQ.
Fabric B	LVS-48810	¾ yd.
Fabric C	PE-428	1 ⅞ yd.
Fabric D	PE-436	⅓ yd.
Fabric E	PE-432	FE.

BACKING FABRIC

Fabric **C** PE-428 1 yd (included)

Fringe

Fabric **C** PE-428 ⅝ yds.
(included)

CUTTING DIRECTIONS

Fabric **A**:

Three (3) 6 1/2" x 3 1/2" rectangles
Seven (7) 3 1/2" squares

Fabric **B**:

Eleven (11) 6 1/2" x 3 1/2" rectangles
Twelve (12) 3 1/2" squares
Two (2) 30 1/2 x 1 1/2" strip

Fabric **C**:

Two (2) 1 1/2 x 30" strips
Four (4) 6 1/2 x 3 1/2" rectangles
Sixteen (16) 3 1/2" squares
Two (2) from template **1**
One 30 x 26" rectangle (backing)
Two (2) 9 x 24" rectangles for fringe

Fabric **D**:

Five (5) 6 1/2 x 3 1/2" rectangles.
Seven (7) 3 1/2" squares
Two (2) 30 1/2" strips

Fabric **E**:

Five (5) 6 1/2 x 3 1/2" squares

CONSTRUCTION

Sew all rights sides together with ¼" seam allowance.

Flying Geese Construction

- Place a marked 3 ½" square from Fabric **B** right sides together on the left side of a 6 ½" x 3 ½" rectangle from Fabric **C** as shown.
- Stitch on the drawn line. Trim seam allowance to ¼". Press corner open. In the same manner, sew a 2-½" square to the remaining corner, trim and press. Flying Geese Construction



- Repeat the same process for the following fabrics:

Create 4 flying geese using fabric **B & C**:



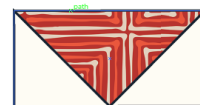
Create two (2) flying geese using fabric **B & E**:



Create five (5) flying geese using fabric **B & E**:



Create one (1) Flying geese using fabrics **A & D**:



(1)



(1)

Create two (2) flying geese using fabrics **A & C**:



Create one (1) flying geese using fabrics **B & D**:



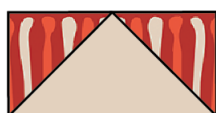
Create one (1) flying geese using fabrics **D, C & A**:



Create One (1) flying geese using fabric **C & D**:



Create one (1) flying geese using fabric **A & E**:



WALL ART ASSEMBLY

*Sew all rights sides together with
1/4" seam allowance.*

- Once you are done with all the flying geese blocks start attaching them together in the following order to start your wall art assembly.

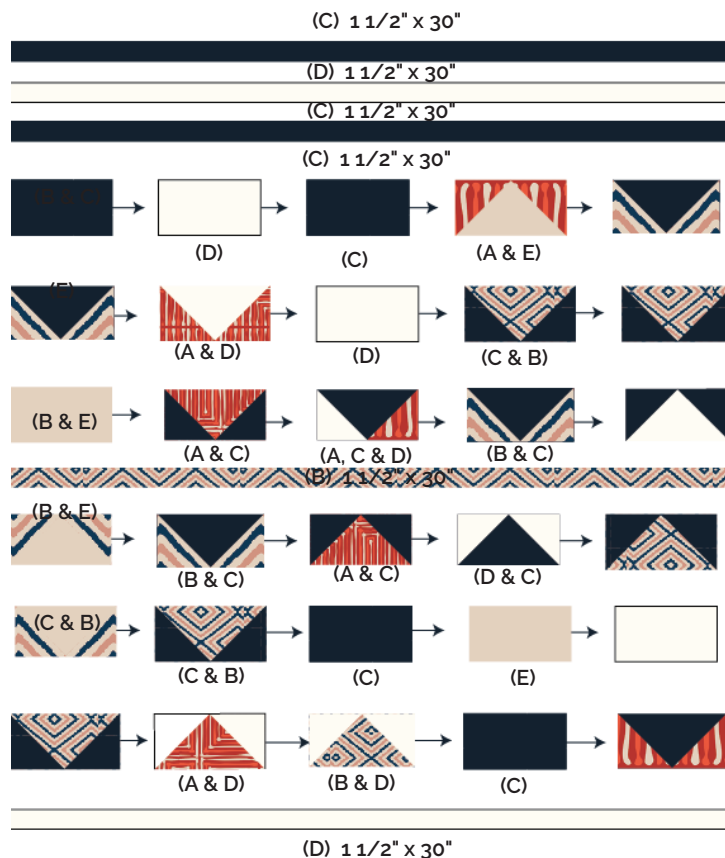
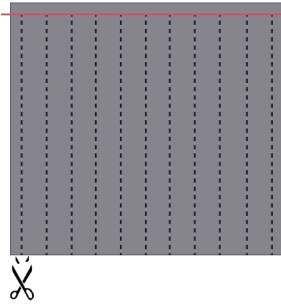


DIAGRAM 1

- Now proceed with the fringes!
- Cut two blocks of 9 x 24" in
- Mark and cut every 1/4" or 1/2" in (whichever you prefer) and refer to the diagram below to cut your fringes. Remember you can trim until your desired length.
- Tip: the roller cutter will definitely make things easier when cutting such short distances!



- Remember to cut all the way to the top LEAVING ½" in for seam allowance.
- Once you finish, attach it to the right side of the front panel.
- We used red and navy blue chenille-it to give a special texture to the wall art.
- For chenille colors and correct placement on top of any project, refer to the link below:
- <https://www.fauxchenille.com/>

FINAL ASSEMBLY

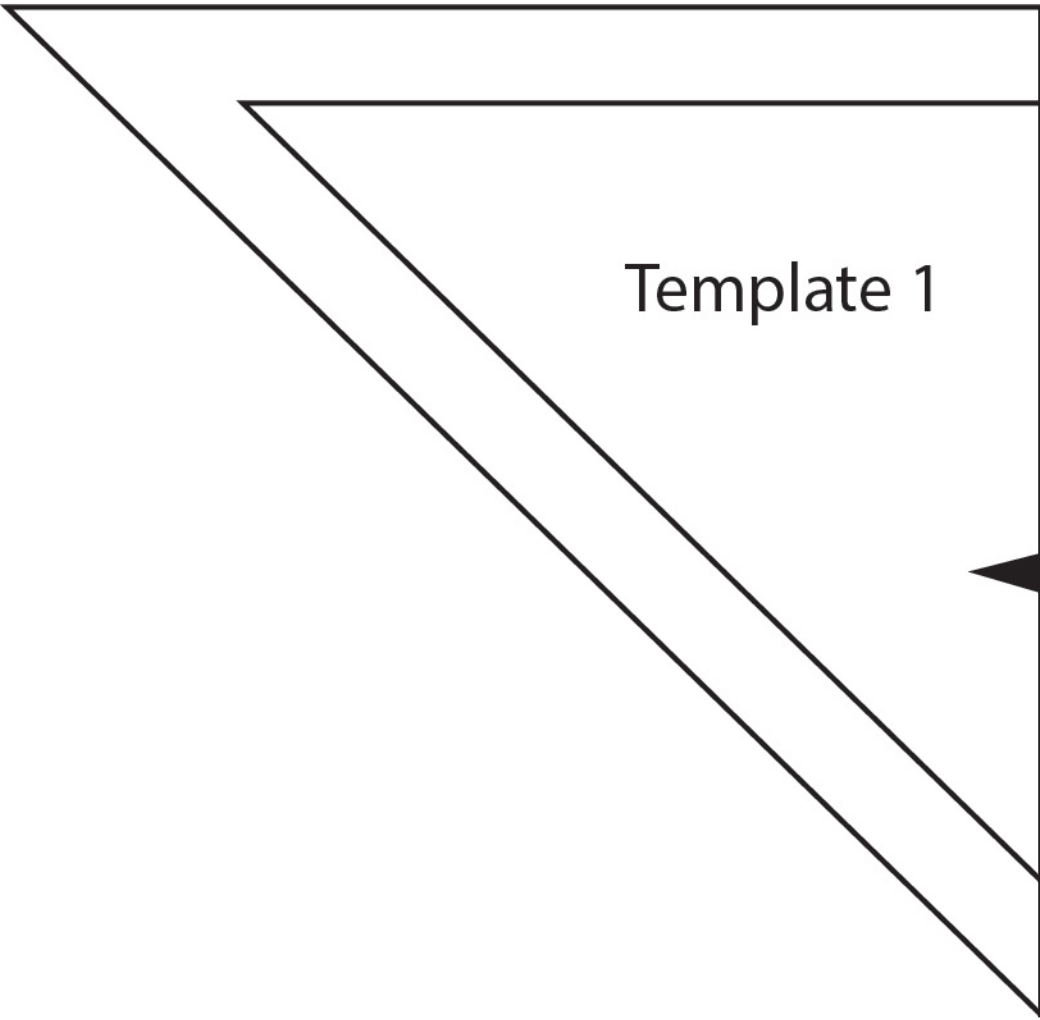
Sew all rights sides together with ¼" seam allowance.

- We used fabric **C** as the wall art backing, however you can use whichever fabric you prefer.
- Cut a 30 ½ x 26" in rectangle and attach it to the second template **1** you cut previously and place it on top of the right side of the wall art.
- Pin both layers together and stitch at a ¼" seam allowance.
- Leave a small opening and flip right side out, making sure the corners are turned out nicely.
- You are done! Hang it on the wall using push pins and enjoy it!

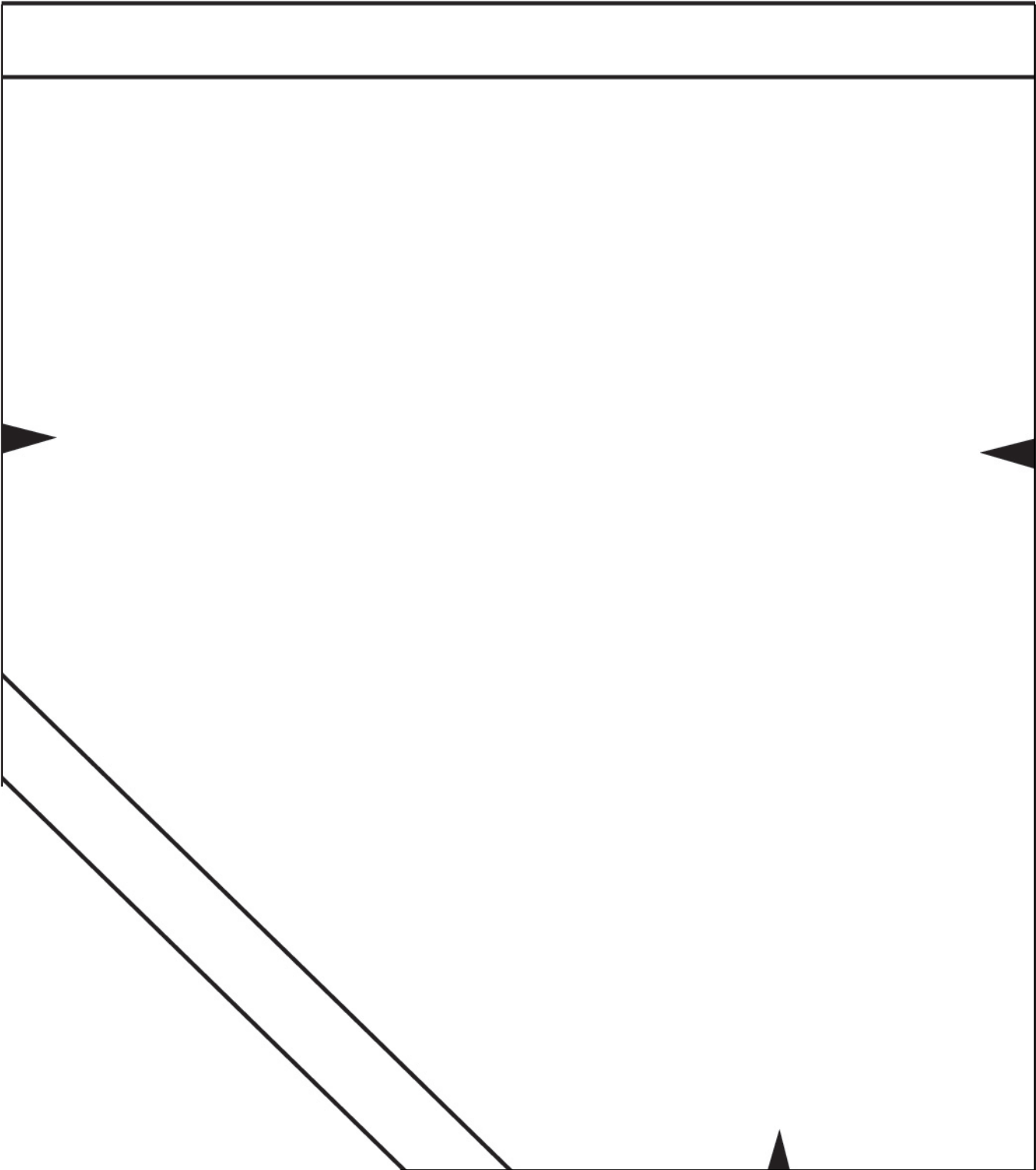


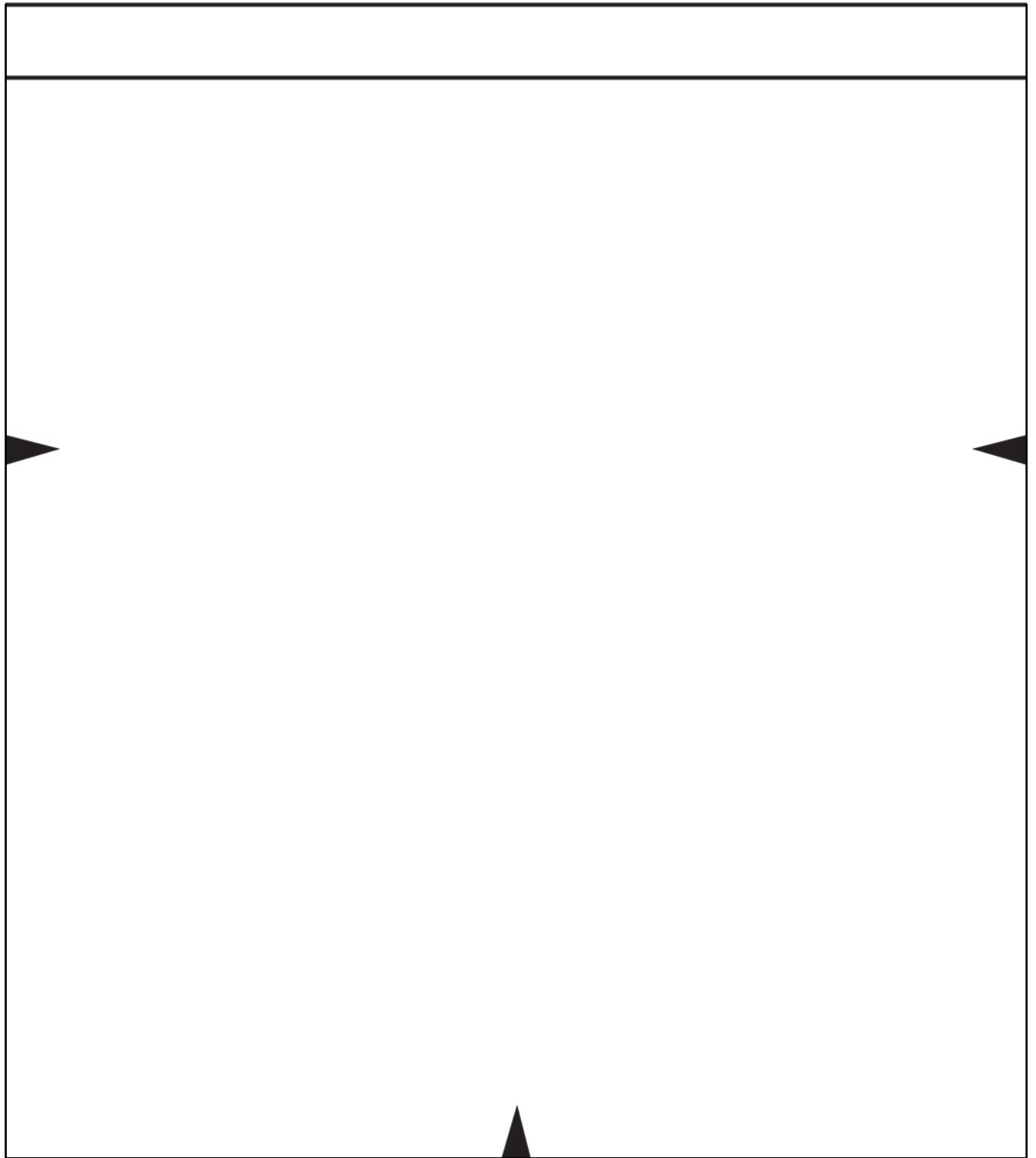
artgalleryfabrics.com

NOTE: While all possible care has been taken to ensure the accuracy of this pattern, We are not responsible for printing errors or the way in which individual work varies. Please read instructions carefully before starting the construction of this quilt. If desired, wash and iron your fabrics before starting to cut.



XXXXXXXXXXXXXXXXXXXXXXXXXXXXXXXXXXXX







A diagram of a square with a large 'V' shape inside. The 'V' is formed by two parallel lines meeting at a point at the bottom center. The top of the 'V' is open, and the top corners of the square are marked with small black triangles pointing outwards.

