

X
X
X
X
X
X
X
X
X
X
X
X
X

A yellow and white striped bag hanging from a rope against a dark background. The bag features a yellow upper section and a white lower section with horizontal yellow stripes. It is suspended by a thick, light-colored rope that forms a loop at the top. The background is dark, with a bright yellow rectangular area visible behind the bag.

× × × × × × × × × × × × × × × × × × ×



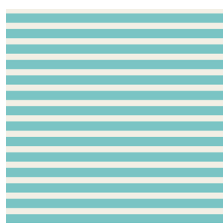
OZZY

HAND BAG DESIGNED BY AGFstudio



FABRICS DESIGNED BY AGF STUDIO

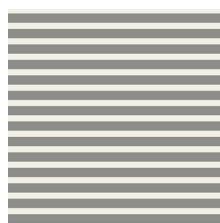
STRIPED ALIKE



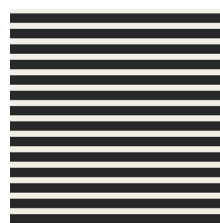
K-ST-10
STRIPED ALIKE AQUA



K-ST-101
STRIPED ALIKE BLUE



K-ST-102
STRIPED ALIKE GREY

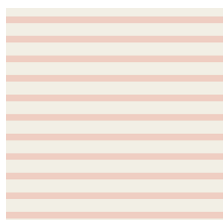


K-ST-103
STRIPED ALIKE CAVIAR



K-12200
STRIPED NOIR

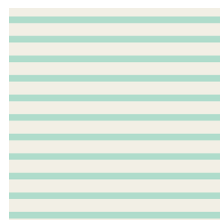
STRIPED APART



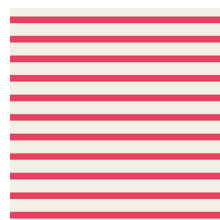
K-ST-200
STRIPED APART ROSE



K-ST-201
STRIPED APART SKY



K-ST-202
STRIPED APART MINT

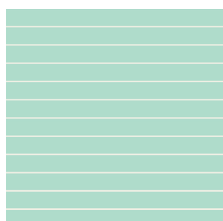


K-ST-203
STRIPED APART PINK



K-ST-204
STRIPED APART CAVIAR

STRIPED SLEEK



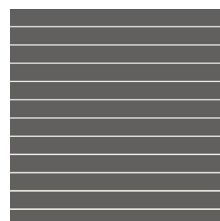
K-ST-300
STRIPED SLEEK MINT



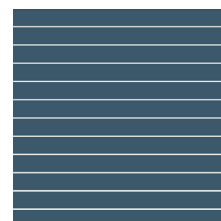
K-ST-301
STRIPED SLEEK SUN



K-ST-302
STRIPED SLEEK PINK



K-ST-303
STRIPED SLEEK GRAPHITE



K-ST-304
STRIPED SLEEK
MEDITERRANEO





FINISHED SIZE | 17" x 16"

FABRIC REQUIREMENTS

Fabric A	KS-105	1/3" yd.
Fabric B	KS-ST-203	3/8" yd.
Fabric C	K-12200	5/8" yd.
Fabric D	DEN-T-3002	1/4" yd.
Fabric E	KS-109	1/4" yd.
Fabric F	DEN -S-2000	1/2" yd.

LINING FABRIC

DEN-S-2000 1/6" yds. *(Suggested)*

BINDING FABRIC

Fabric **D** DEN-T-3002 yd.
(included)

CUTTING DIRECTIONS

1/4" seam allowances are included.

- When using knit fabrics it is recommended to use Knit - tear away fabric stabilizer or medium wight fusible interfacing before cutting anything. This will help you hold your fabric in place and you will be comfortable throughout all the process
- Cut two (2) 30 x 12" rectangles from fabric **A**
- Cut two (2) 29 x 13 1/2" rectangles from fabric **B**
- Cut two(2) 22" squares from fabric **C**
- Cut two (2) 29 x 8" rectangles from fabric **E**
- Cut two (2) template 1 (bag pattern) from fabric **F**

CONSTRUCTION

Sew all rights sides together with 1/4" seam allowance.

- For this bag you will have to print two times the paper piecing template we provided below for the front and back side of the bag.
- Place fabric **C** on top of section **1** in the pattern try to match the vertical lines with the pattern.
- Place fabric **C** with the pattern wrong sides facing together.
- Place fabric **B** on top of fabric **C** both wrong sides facing the pattern. Make sure fabric **B** covers section (2).
- Continue placing fabric **A & E** covering their corresponding sections.
- If you are new to paper piecing check out this video tutorial on how to paper piece:
- <http://www.agfblog.com/2017/08/paperpiecing-tips-how-to-make-a-crossed-canoesblock-.html>
- Repeat the same process for the other side of the bag.
- Once you have the two blocks place batting below to add shape to your bag. Your blocks should look like this:



DIAGRAM 1

- Stitch batting to back side of the block with 1/4" inch all around.
- Quilt if desired.
- Mark 2 1/2" x 6 in from both upper corners to create the side drop.

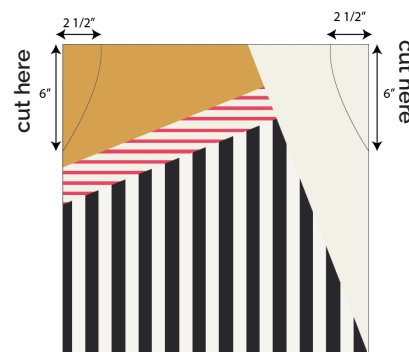


DIAGRAM 2

- Add some pleats or gathers to the top of your bag, remember to match the pleated part with the template 1 (bag pattern) we provided.
- Don't make it too big or small, otherwise you will have some complications when attaching everything together..
- Use template **1** (bag pattern) to shape properly your block

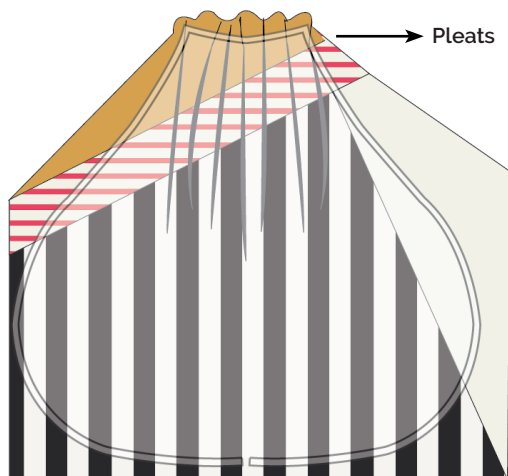


DIAGRAM 3

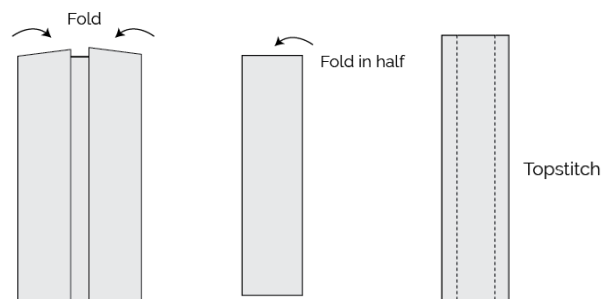
- Once you have the final shape, attach both pieces right sides facing together.
- Press seams open.

LINING & HANDLES

Sew all rights sides together with $\frac{1}{4}$ " seam allowance.

- Use fabric **E** template 1 pieces to create the lining.
- Attach both pieces right sides facing together. Gather the top part.
- Use fabric **D** to create the handles and binding for a clean finish.
- **Creating the handles**
- Use fabric **C** 4 $\frac{1}{2}$ " x 25 fabric strips.
- Fold both sides of your strip to the center and then fold in half. Press and top stitch both sides of your strap at $\frac{1}{4}$ ".

XXXXXXXXXXXXXXXXXXXXXXXXXXXXXXXXXXXX



- Stitch handles $\frac{1}{2}$ " facing the right side of the exterior bag.

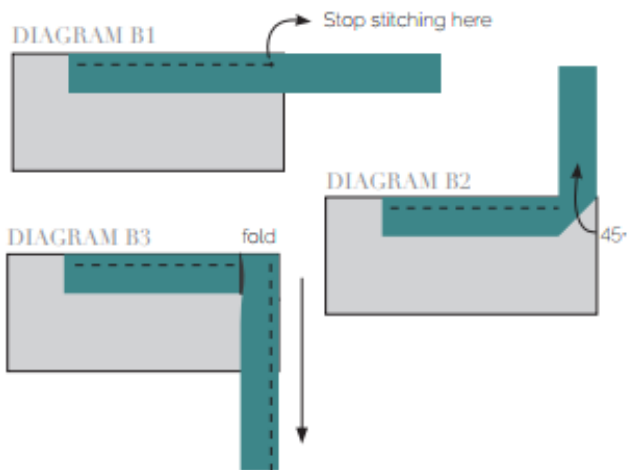
FINAL ASSEMBLY

Sew all rights sides together with $\frac{1}{4}$ " seam allowance. Press open.

- Place lining inside exterior bag right sides together. Align side seams.
- Stitch lining to exterior all the way around top of pack opening to add more security.
- Make sure to leave the handles outside the bag.

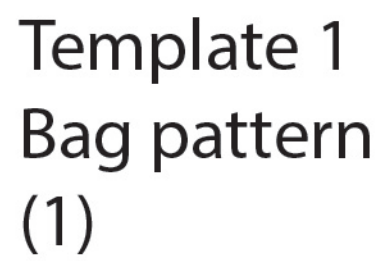
BINDING

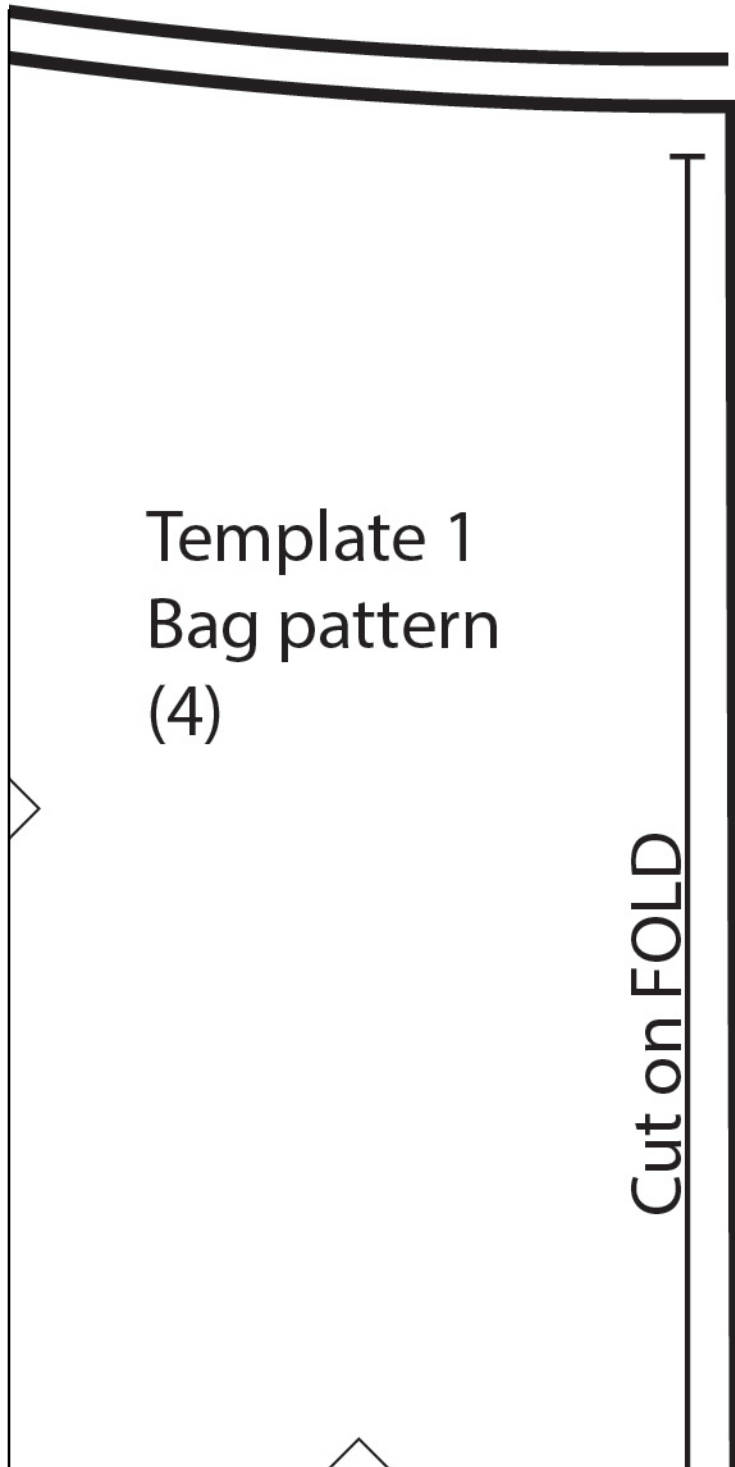
- Cut enough strips $1\frac{1}{2}$ " wide by the width of fabric **D** to make a final strip 104" in long. Start sewing the binding strip in one of the sides of the bag, placing the strip right side down and leaving an approximated 5" tail. Sew with $\frac{1}{4}$ " seam allowance (using straight stitch), aligning the strip's raw edge with the quilt top's raw edge.
- Stop stitching $\frac{1}{4}$ " before the edge of the quilt. Clip the threads. Remove the bag from under the machine presser foot. Fold the strip in a motion of 45° and upward, pressing with your fingers. Hold this fold with your finger, bring the strip down in line with the next edge, making a horizontal fold that aligns with the top edge of the bag. Start sewing at $\frac{1}{4}$ " of the border, stitching all the layers.
- Do the same around the bag opening. Stop stitching before you reach the last 3 or 4 inches. Cut the threads and remove the quilt from under the machine presser foot.
- Lay the loose ends of the binding flat along the edge, folding the ends back on themselves where they meet. Press them together to form a crease. Using this crease as the stitching line, sew the two open ends of the binding with right sides together (you can help yourself marking with a pencil if the crease is difficult to see).

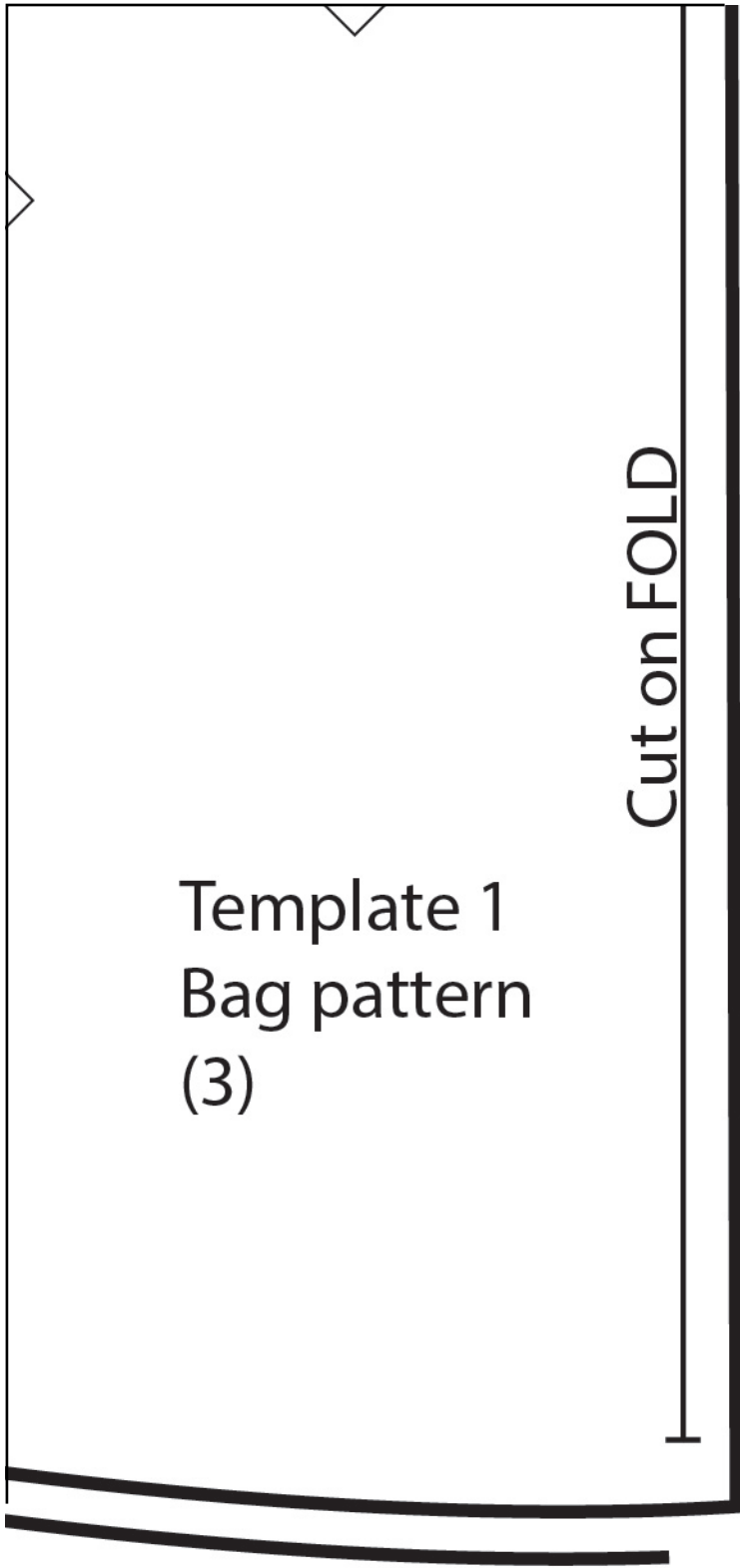


artgalleryfabrics.com

NOTE: While all possible care has been taken to ensure the accuracy of this pattern, We are not responsible for printing errors or the way in which individual work varies. Please read instructions carefully before starting the construction of this quilt. If desired, wash and iron your fabrics before starting to cut.







Template 1
Bag pattern
(2)

3

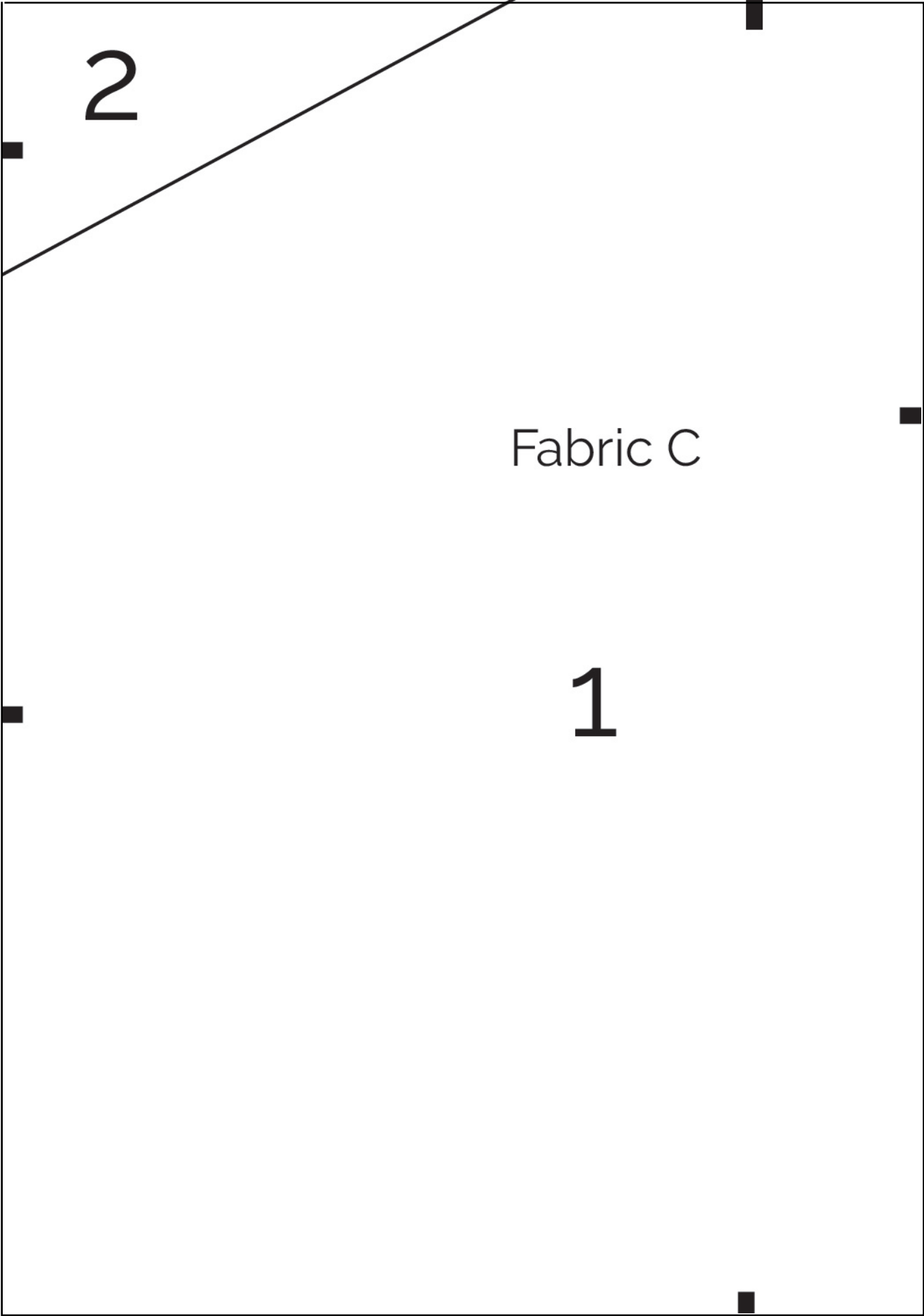


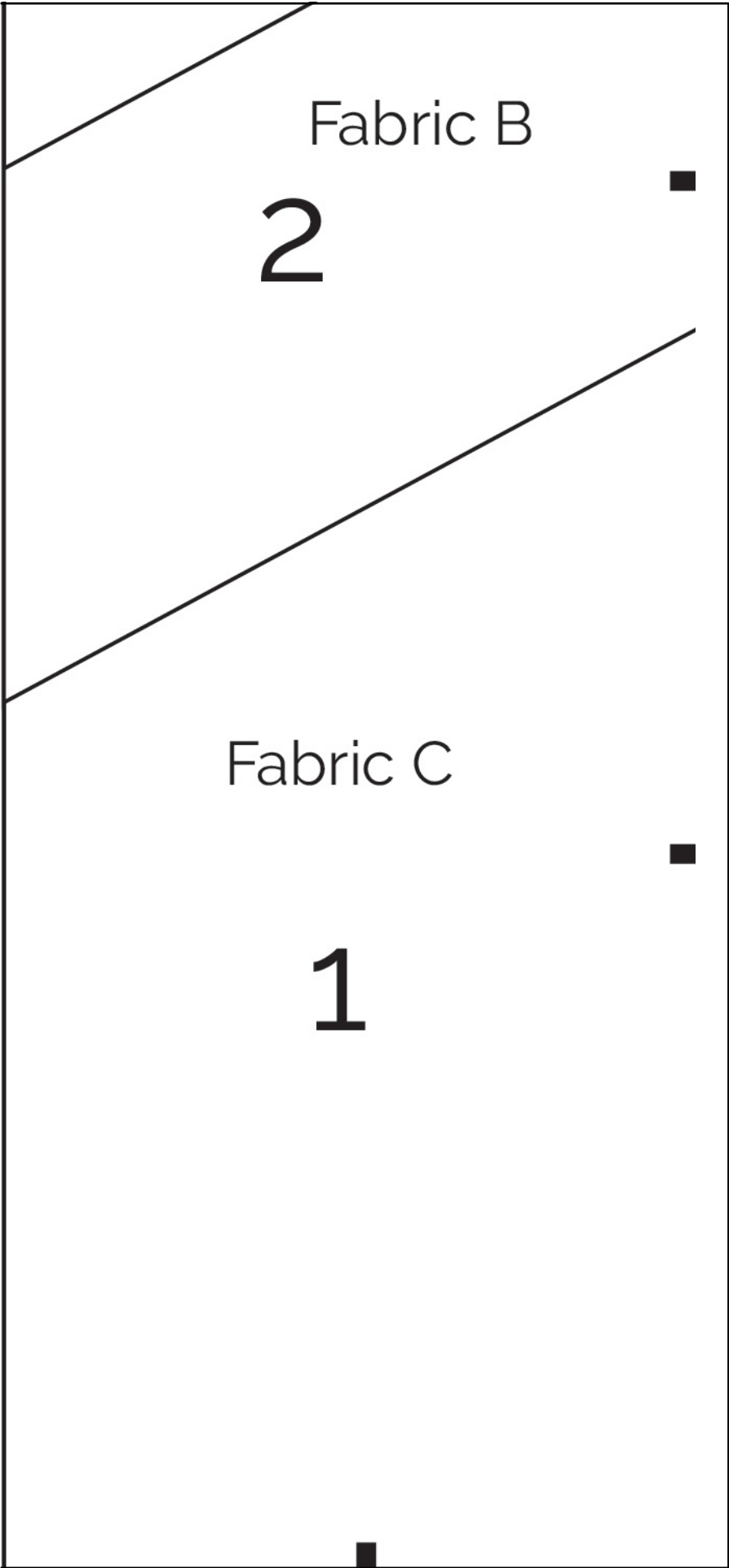
4

1

Fabric C

1





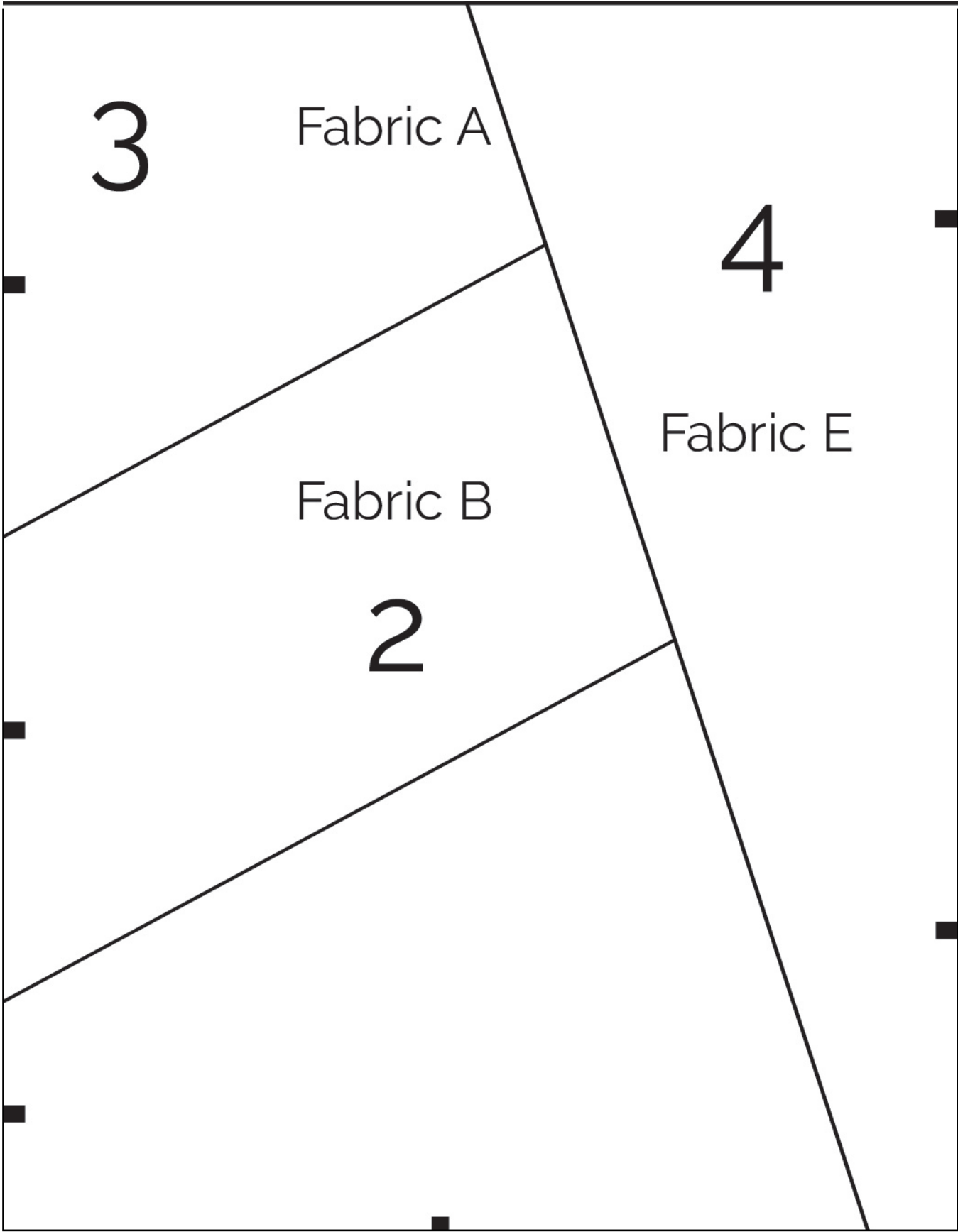


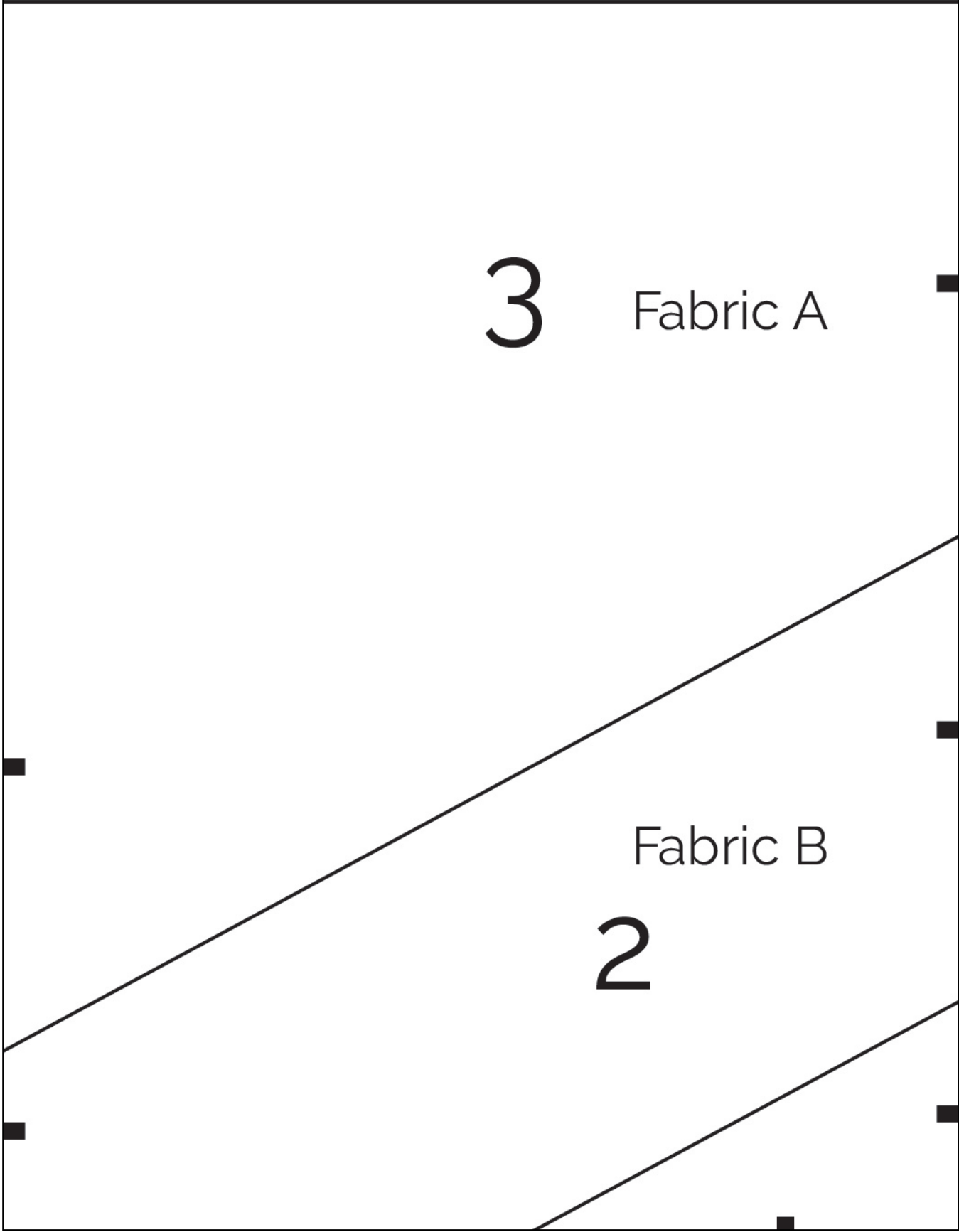




1

Fabric C





4