

NOISE



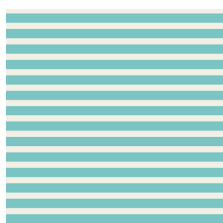
NOISE

HAND BAG DESIGNED BY *AGFstudio*



FABRICS DESIGNED BY AGF STUDIO

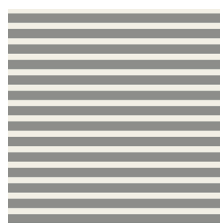
STRIPED ALIKE



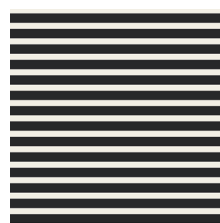
K-ST-10
STRIPED ALIKE AQUA



K-ST-101
STRIPED ALIKE BLUE



K-ST-102
STRIPED ALIKE GREY

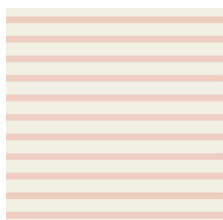


K-ST-103
STRIPED ALIKE CAVIAR



K-12200
STRIPED NOIR

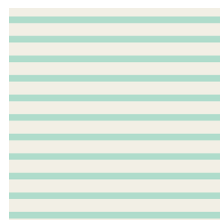
STRIPED APART



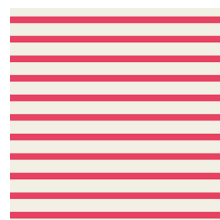
K-ST-200
STRIPED APART ROSE



K-ST-201
STRIPED APART SKY



K-ST-202
STRIPED APART MINT

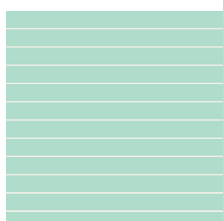


K-ST-203
STRIPED APART PINK



K-ST-204
STRIPED APART CAVIAR

STRIPED SLEEK



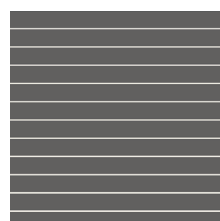
K-ST-300
STRIPED SLEEK MINT



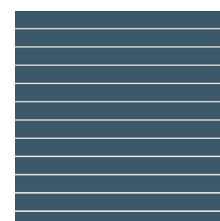
K-ST-301
STRIPED SLEEK SUN



K-ST-302
STRIPED SLEEK PINK



K-ST-303
STRIPED SLEEK GRAPHITE



K-ST-304
STRIPED SLEEK
MEDITERRANEO



NOISE

FINISHED SIZE | 21' x 16'

FABRIC REQUIREMENTS

Fabric A	KS-ST- 101	1/3 yd.
Fabric B	DEN-S-2008	3/8 yd.
Fabric C	PE-428	5/8 yd.

LINING FABRIC

DEN-S-2008 1 1/2' yds. *(Suggested)*

CUTTING DIRECTIONS

1/4" seam allowances are included.

- Use Knit - tear away fabric stabilizer or medium weight fusible interfacing before cutting anything. This will help you hold your fabric in place and you will be comfortable throughout all the process
- Cut (88) template 1 from fabric **A** for front
- Cut (88) template 1 from Fabric **A** for back
- Cut one (1) template 3 (bag base) from fabric **A**
- Cut one (1) template 3 (bag base lining) from fabric **B**
- Cut two (2) template 2 (for lining) from fabric **B**
- Cut (1) 9 1/2 x 5 1/2" rectangle from fabric **B** for inside pocket
- Cut two (2) 25 x 4" strips of fabric **C** for handles.

CONSTRUCTION

Sew all rights sides together with 1/4" seam allowance.

- Use template 1 for front and start creating a block. sew on the sides of each triangular template. Create eight rows of (11) triangles.
- Follow the diagram below for proper placement and attachment



DIAGRAM 1

- It doesn't matter if the fabric stripes are not matching. The cool thing about this bag is that it creates a playful but subtle texture.
- Once your block is created use template **2** to create one of the sides of the bag.
- Repeat the same steps one more time for the other side. Quilt if desired.
- Your two blocks should finish like this:

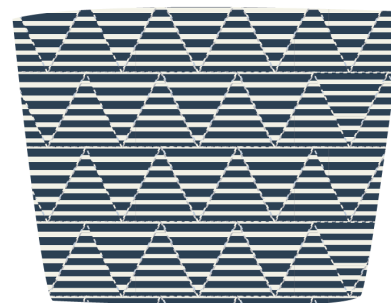


DIAGRAM 2

- Use template 3 to create the bag base. Use knit stabilizer or fusible interfacing to give stability to the base.
- Attach the two bag patterns on the sides. Right sides facing together.
- Use pins to place bag base in place in between the bag.
- Once the base is properly in place sew leaving 1/4" seam allowance.
- Congratulations! you are done with the exterior part of your bag.

LINING & DROP-IN POCKET

- Use the $9\frac{1}{2}' \times 5\frac{1}{2}'$ from fabric **B**
- Cut a $9\frac{1}{2}' \times 5\frac{1}{2}'$ piece of batting, and attach it to fabric **B** rectangle with a basting stitch. Quilt if desired.
- Add a contrasting binding. In this case we used fabric **A** striped knit.
- Take the edges of Fabric **B** fold them in and stitch right on the edge leaving the top part unsewn.
- Stitch on the middle or more to your right or left in order to create your drop-in pockets.
- Refer to the diagram below to see how the inside should look.

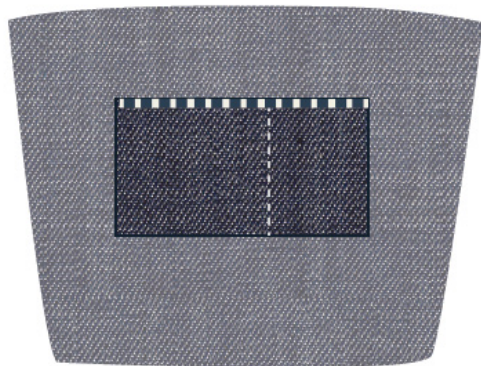


DIAGRAM 3

- Once you are done with the drop in pocket attach both sides of the lining right sides facing together. Add the lining base on the bottom part of the lining and place it properly using pins.
- Sew everything together.
- **Creating the handles**
- Use fabric **C** $4\frac{1}{2}' \times 25$ fabric strips.
- Fold both sides of your strip to the center and then fold in half. Press and top stitch both sides of your strap at $\frac{1}{4}'$.

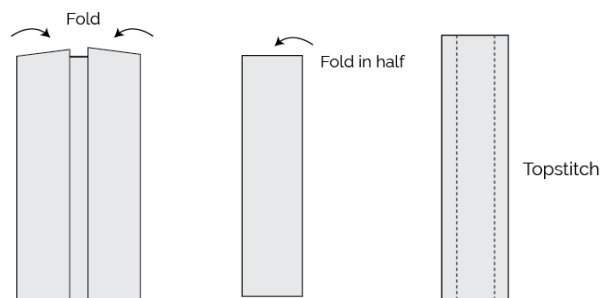


DIAGRAM 4

- Stitch handles $\frac{1}{2}'$ facing the right side of the exterior bag.



DIAGRAM 5

FINAL ASSEMBLY

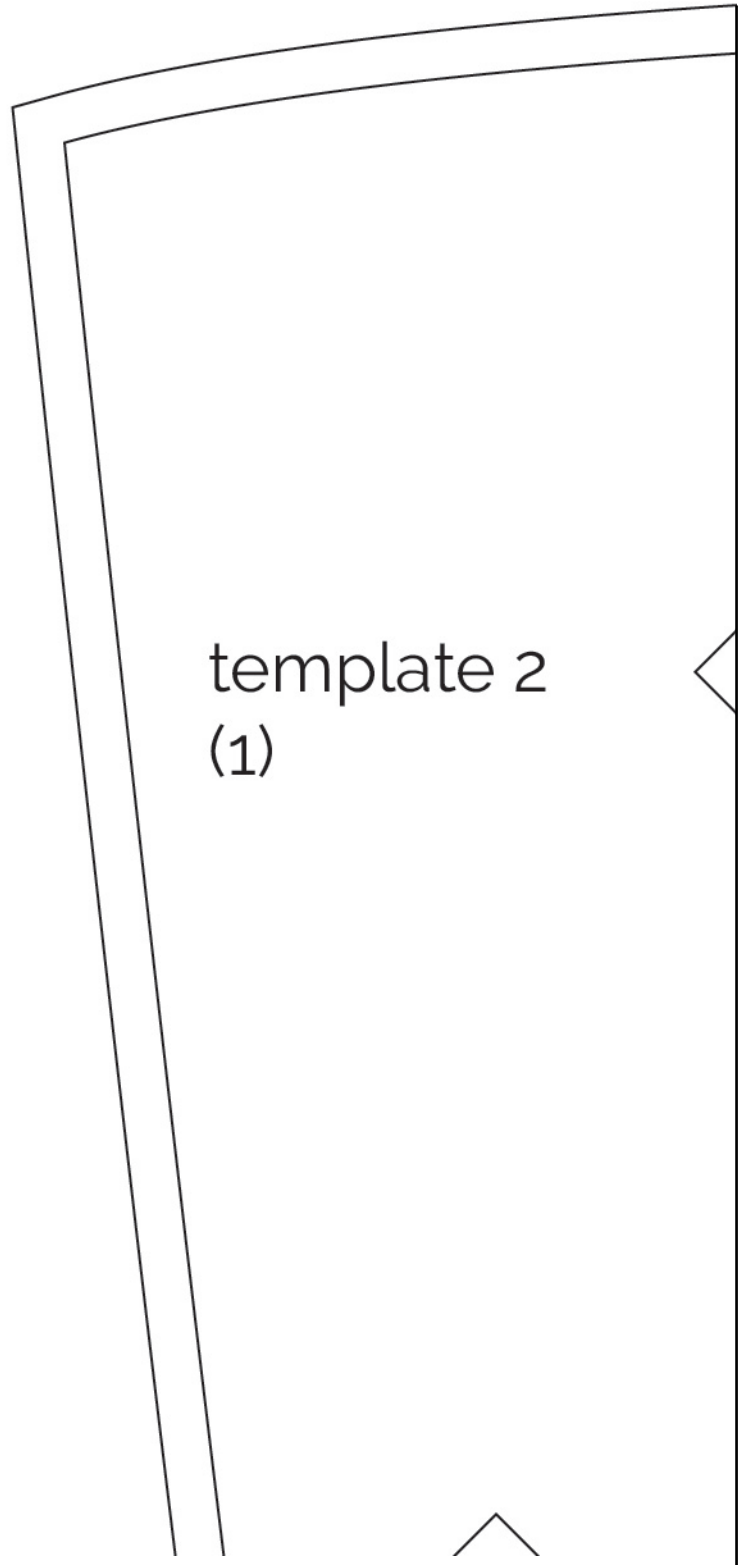
Sew all rights sides together with $\frac{1}{4}"$ seam allowance. Press open.

- Place bag body (exterior) inside lining, right sides together. Align side seams, Pin lining to exterior.
- Stitch lining to exterior all the way around top of pack opening.
- Make sure to keep side seams aligned and seam allowances open as they are stitched.
- Press seam allowances open all the way around the top of the pack.
- Leave a 5" in hole in one of the sides of the lining. Flip you bag inside out.
- Turn backpack right side out through the hole and top stitch or hand stitch to assure a clean finish.
- Place the lining back inside the exterior, and press the lining/exterior attachment around the cab from the right side.
- You are finally done! Enjoy your new stylish bag!

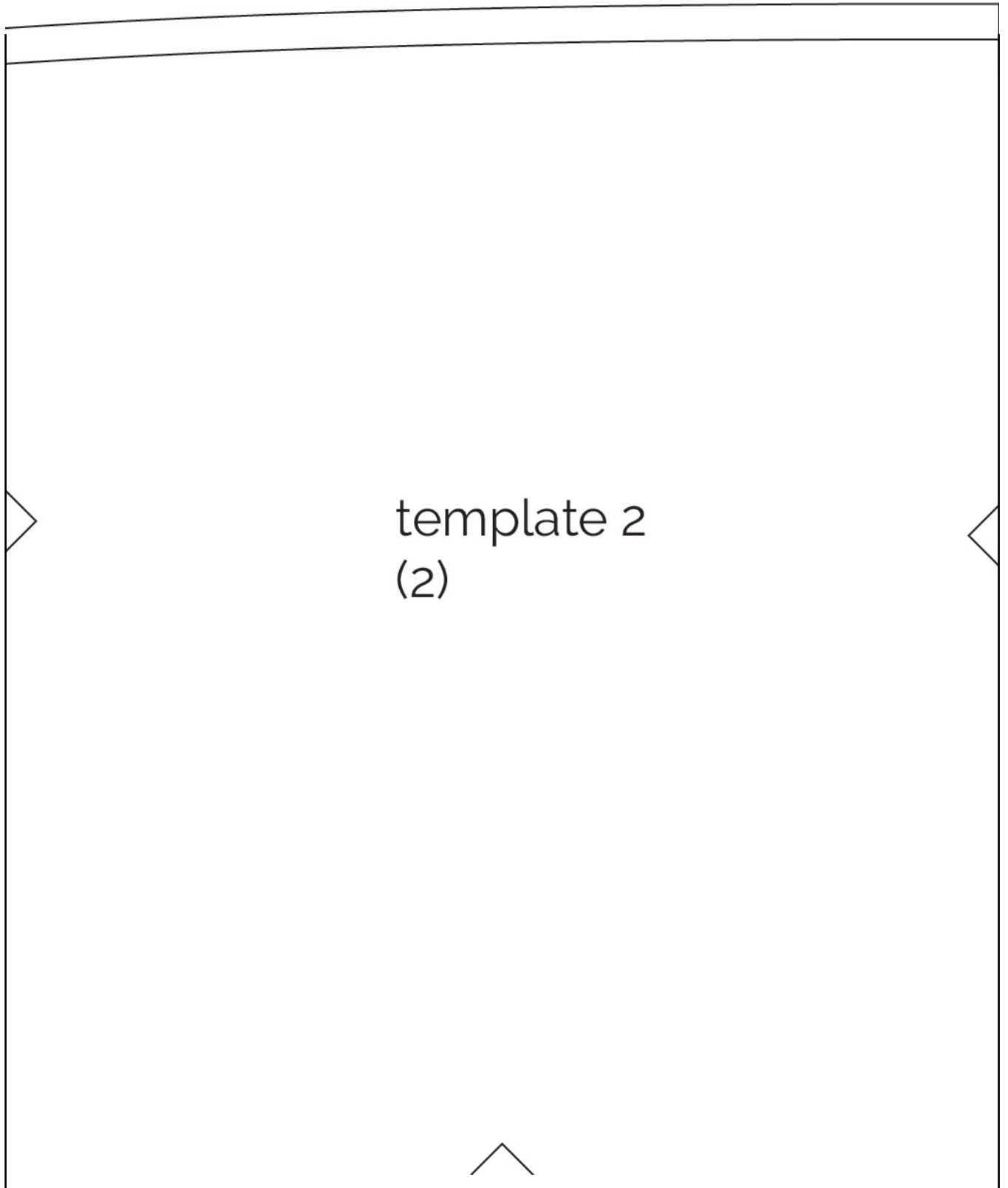


artgalleryfabrics.com

NOTE: While all possible care has been taken to ensure the accuracy of this pattern, We are not responsible for printing errors or the way in which individual work varies. Please read instructions carefully before starting the construction of this quilt. If desired, wash and iron your fabrics before starting to cut.



template 2
(1)

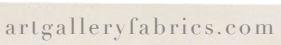


template 2
(2)

template 2
(3)

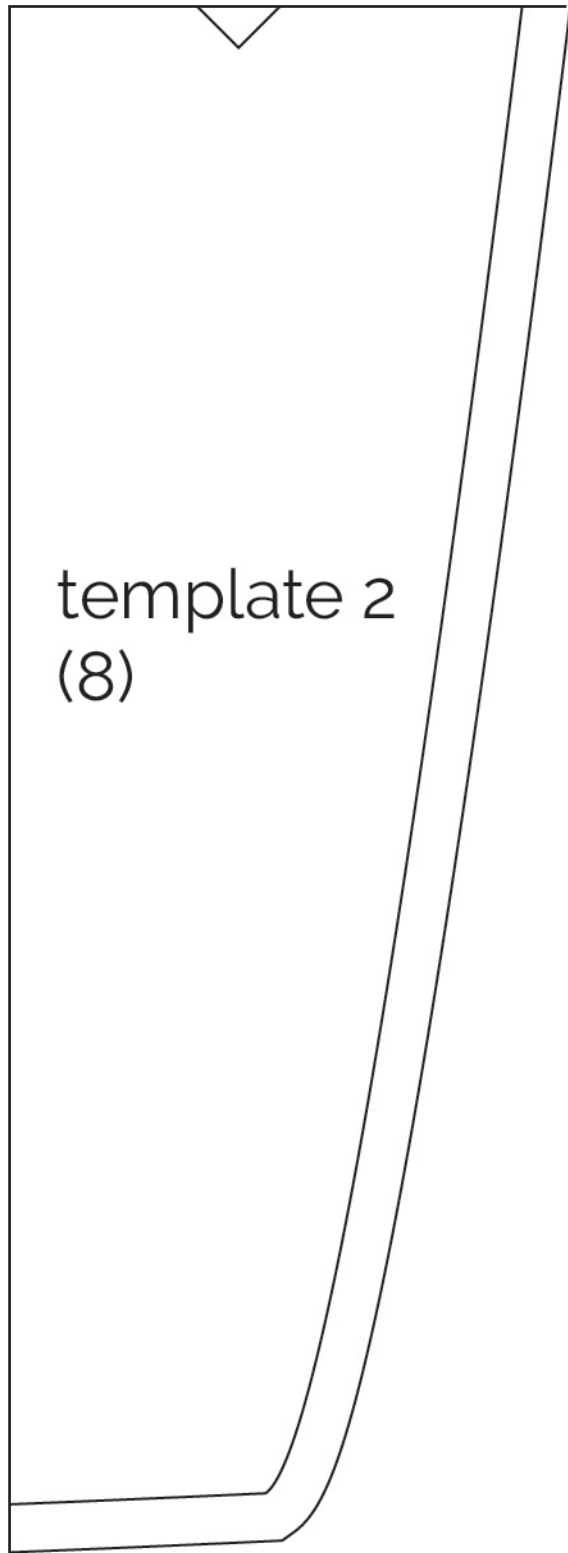


template 2
(6)





template 2
(7)



template 3

ON FOLD
Fabric A, B
Interfacing