

# FRAMED



capsules  
by AGF



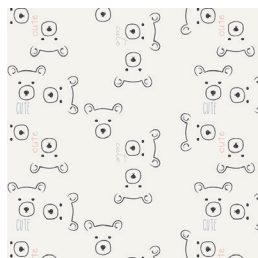
# FRAMED

AGFstudio

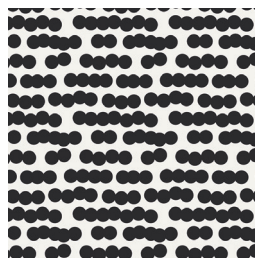
BLOCKS DESIGNED BY AGF STUDIO



FABRICS DESIGNED BY AGF STUDIO



CAP-N-6000  
CARE BEARS



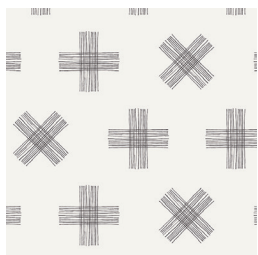
CAP-N-6001  
PLAYING DOTS



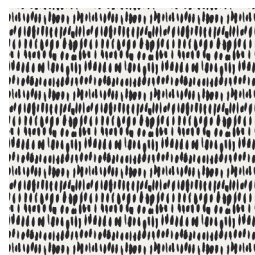
CAP-N-6002  
DREAM BIG



CAP-N-6003  
SWIRLY FRIENDS



CAP-N-6004  
TWINKLE TWINKLE



CAP-N-6005  
FINGER PAINT



CAP-N-6006  
CURIOUS PAWS



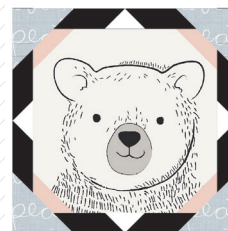
CAP-N-6007  
MAKE A WISH



CAP-N-6008  
SIR BEAR



CAP-N-6009  
ONE, TWO, SHEEP



FEEL THE DIFFERENCE © 2018 Courtesy of Art Gallery Quilts LLC. All Rights Reserved.





FINISHED SIZE | 11' x 11'

## FABRIC REQUIREMENTS

Fabric <b>A</b>	CAP-N-6007	1 Yd.
Fabric <b>B</b>	CAP-N-6002	¼ yd.
Fabric <b>C</b>	CAP-N-6001	¼ yd.
Fabric <b>D</b>	CAP-N-6005	¼ yd.
Fabric <b>E</b>	PE-471	¼ yd.
Fabric <b>F</b>	PE-413	¼ yd.
Fabric <b>G</b>	PE-433	¼ yd.

## CUTTING DIRECTIONS

¼" seam allowances are included.  
WOF means width of fabric.

Four (4) 3½" x 3½" squares from fabrics **B**, **C**, **E** and **G**.

Four (4) 2½" x 2½" squares from fabrics **B**, **D**, **E** and **F**.

Eight (8) 1½" x 1½" squares from fabrics **C**, **E**, **F** and **G**.

Four (4) 5" x 1½" stripes from fabrics **B**, **D**, **F** and **G**.

Four (4) 6" x 1½" stripes from fabrics **B**, **D**, **F** and **G**.

Four (4) 9½" x 9½" squares from fabric **A**:



DIAGRAM 1

## CONSTRUCTION

Sew all rights sides together with ¼" seam allowance.

- Take one (1) 9½" x 9½" square from fabric **A**, and four (4) 2½" x 2½" squares from fabric **E**.
- Do corner square triangles.



DIAGRAM 2

- Take eight (8) 1½" x 1½" squares from fabric **G**, four (4) 5" x 1½" stripes from fabric **F**, and four (4) 6" x 1½" stripes from fabric **F**.
- Do corner square triangles and join the strips following the diagram:

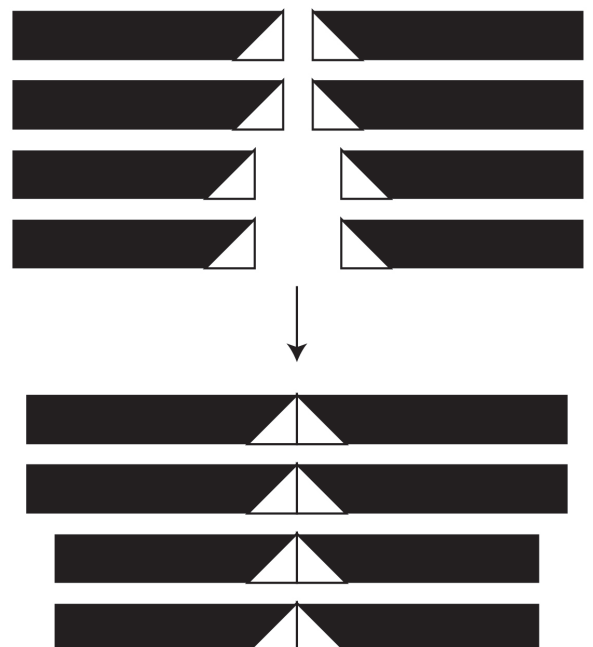


DIAGRAM 3

- Join the resulting strips to the square:

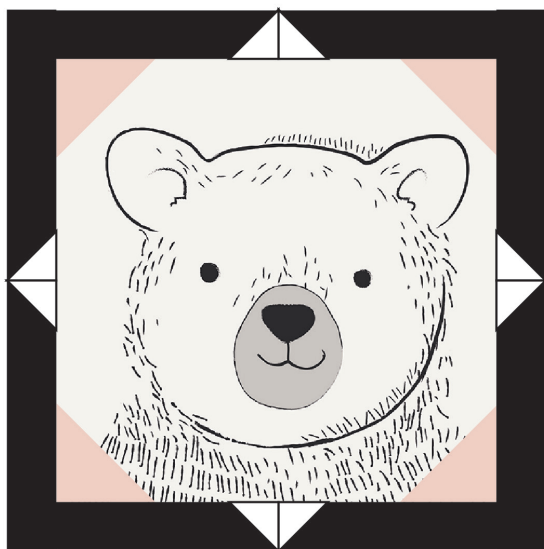


DIAGRAM 4

- Take four (4)  $3\frac{1}{2}$ " x  $3\frac{1}{2}$ " squares from fabrics **B**, and do corner square triangles:

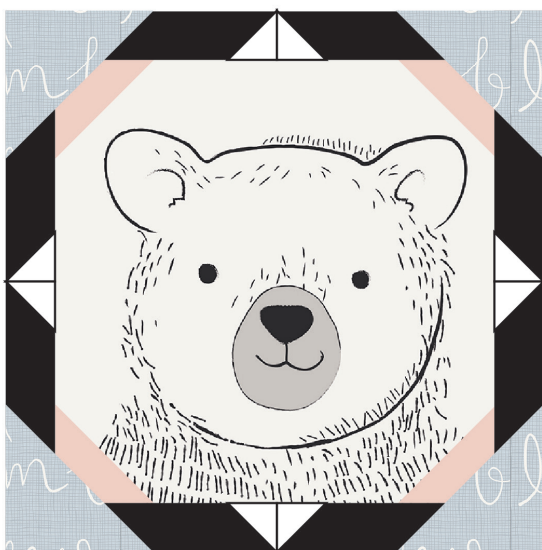


DIAGRAM 5

- Repeat the same steps for the other three (3) blocks.



DIAGRAM 6





FEEL THE DIFFERENCE

[artgalleryfabrics.com](http://artgalleryfabrics.com)

*NOTE: While all possible care has been taken to ensure the accuracy of this pattern, We are not responsible for printing errors or the way in which individual work varies.*

*Please read instructions carefully before starting the construction of this quilt. If desired, wash and iron your fabrics before starting to cut.*

© 2018 Courtesy of Art Gallery Quilts LLC. All Rights Reserved.