

DIAMOND



by AGF

× × × × × × × × × × × × × × × × × × ×

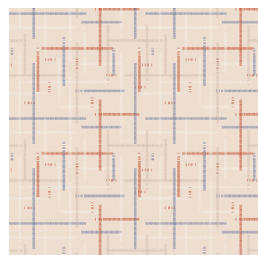
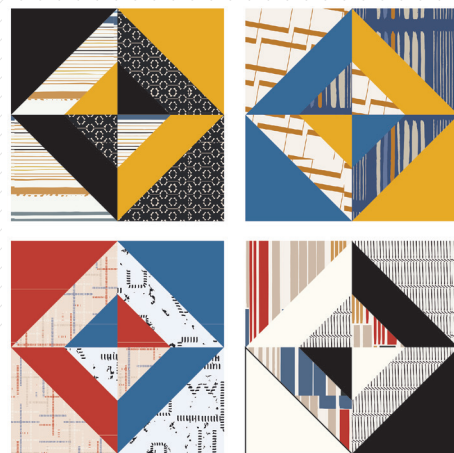


DESIGNED BY AGF STUDIO

AGFstudio

ALIGNED

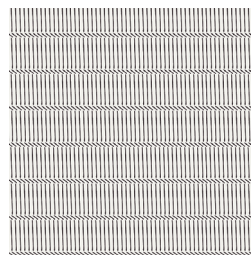
FABRICS DESIGNED BY AGF STUDIO



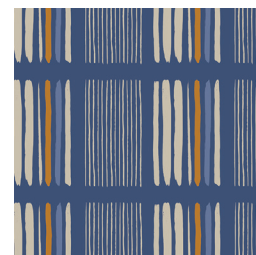
CAP-A-7000
INTERCONNECTED



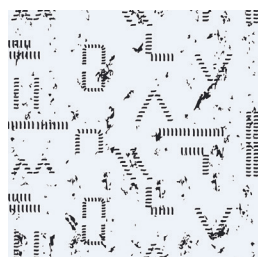
CAP-A-7001
SLANTED



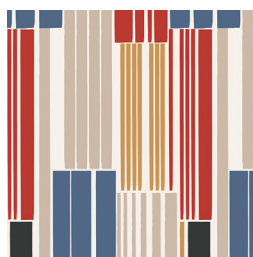
CAP-A-7002
HYPHENATED



CAP-A-7003
LINEUP



CAP-A-7004
DIVIDED



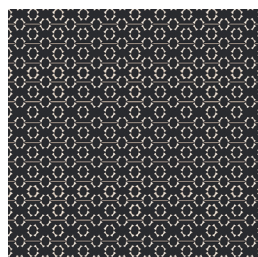
CAP-A-7005
ON LINES



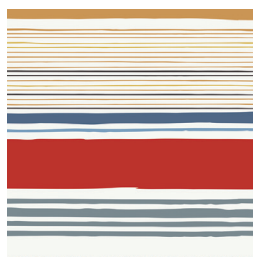
CAP-A-7006
PARALLEL



CAP-A-7007
LINKED



CAP-A-7008
DASH-ING



CAP-A-7009
LINE STUDY



FEEL THE DIFFERENCE © 2018 Courtesy of Art Gallery Quilts t. All Rights Reserved.



FINISHED SIZE | 10' x 10'

FABRIC REQUIREMENTS

Block 1

Fabric A	CAP-A-7004	F8
Fabric B	PE-413	F8
Fabric C	CAP-A-7008	F8
Fabric D	PE-459	F8

Block 2

Fabric A	PE-455	F8
Fabric B	CAP-A-7007	F8
Fabric C	PE-459	F8
Fabric D	CAP-A-7003	F8

Block 3

Fabric A	CAP-A-7000	F8
Fabric B	PE-456	F8
Fabric C	CAP-A-7004	F8
Fabric D	PE-455	F8

Block 4

Fabric A	PE-433	F8
Fabric B	CAP-A-7005	F8
Fabric C	PE-413	F8
Fabric D	CAP-A-7002	F8

CUTTING DIRECTIONS

*1/4" seam allowances are included.
WOF means width of fabric.*

One (1) 5 7/8" square from fabric **A**, **B**, **C** and **D**.

One (1) 3" square from fabric **A**, **B**, **C** and **D**.

CONSTRUCTION

Sew all rights sides together with 1/4" seam allowance.

- Take one (1) 5 7/8" square from fabrics **A**, **B**, **C**, and **D**.
- Pair fabric **A** with fabric **B**, and fabric **C** with fabric **D**.
- Make HSTs:
- Place the squares face to face.
- Draw a diagonal line and stitch at 1/4" from both sides.
- Cut along the drawn line.
- Open and press.

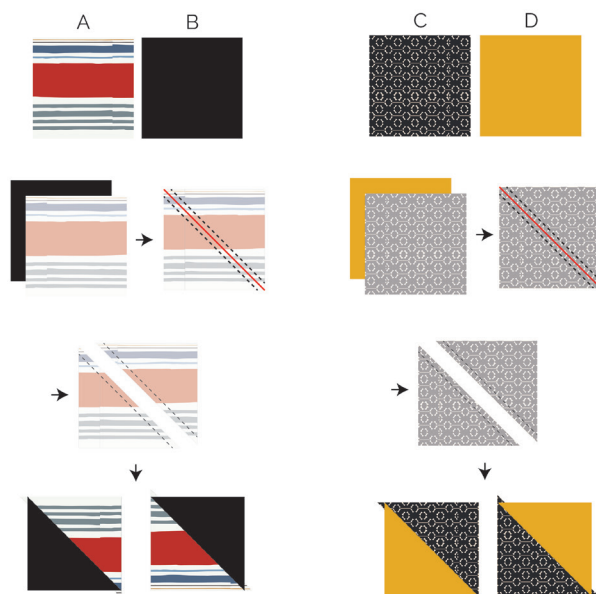


DIAGRAM 1

- Take one (1) 3" square from fabrics **A**, **B**, **C**, and **D**.
- Do corner square triangles:
- Align the 3" square to the HST square to one corner.
- Stitch on a diagonal.
- Trim at 1/4" from the stitch
- Open and press.



DIAGRAM 2

- Repeat the process following Diagram 3.
- Join the resulting pieces.

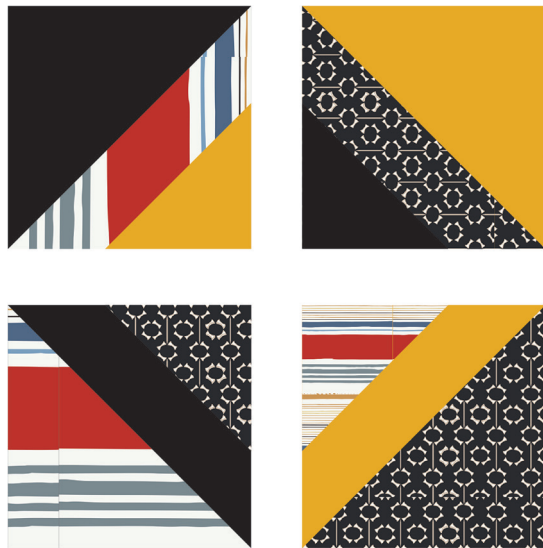


DIAGRAM 3

XXXXXXXXXXXXXXXXXXXXXXXXXXXXXXXXXXXX



artgalleryfabrics.com

NOTE: While all possible care has been taken to ensure the accuracy of this pattern, We are not responsible for printing errors or the way in which individual work varies. Please read instructions carefully before starting the construction of this quilt. If desired, wash and iron your fabrics before starting to cut.

© 2018 Courtesy of Art Gallery Quilts LLC. All Rights Reserved.