

BOWS



capsules



by AGF

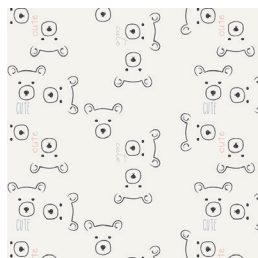
BOWS

AGFstudio

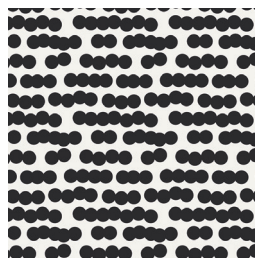
QUILT DESIGNED BY AGF STUDIO



FABRICS DESIGNED BY AGF STUDIO



CAP-N-6000
CARE BEARS



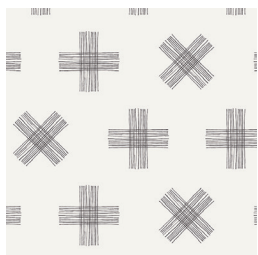
CAP-N-6001
PLAYING DOTS



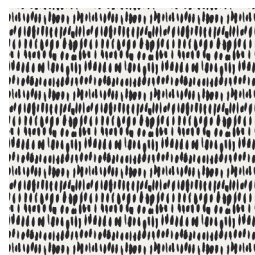
CAP-N-6002
DREAM BIG



CAP-N-6003
SWIRLY FRIENDS



CAP-N-6004
TWINKLE TWINKLE



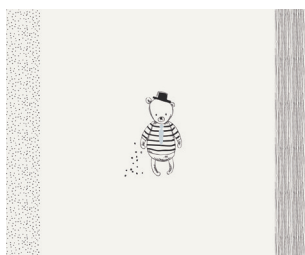
CAP-N-6005
FINGER PAINT



CAP-N-6006
CURIOUS PAWS



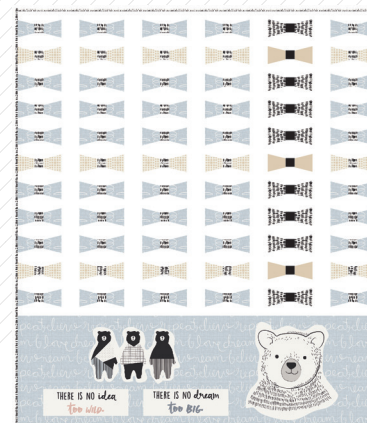
CAP-N-6007
MAKE A WISH



CAP-N-6008
SIR BEAR



CAP-N-6009
ONE, TWO, SHEEP



FEEL THE DIFFERENCE © 2018 Courtesy of Art Gallery Quilts LLC. All Rights Reserved.



FINISHED SIZE | 40" x 46½"

FABRIC REQUIREMENTS

Fabric A	CAP-N-6002	$\frac{3}{4}$ yd.
Fabric B	CAP-N-6005	$\frac{1}{2}$ yd.
Fabric C	CAP-N-6007	1 yd.
Fabric D	SE-614	$\frac{1}{4}$ yd.
Fabric E	PE-432	$\frac{1}{8}$ yd.
Fabric F	PE-413	$\frac{1}{8}$ yd.
Fabric G	PE-433	$1\frac{1}{3}$ yd.

BINDING FABRIC

CAP-N-6002 (Fabric **D**) *(included)*

BACKING FABRIC

CAP-L-3005 (*suggested*) 4 yd.

CUTTING DIRECTIONS

*1/4" seam allowances are included.
WOF means width of fabric.*

Eighty (80) templates from fabric **A**.

One (1) 40½' x 13' rectangle from fabric **A**.

Sixteen (16) templates from fabric **B**.

Eleven (11) 7½" x 1½" strips from fabric **B**.

Fussy cut the bear head, the three big bears, and the 'THERE IS NO idea too wild, THERE IS NO dream to big' panels from fabric C.

Thirty (30) templates from fabric **D**.

Six (6) templates from fabric **E**.

Eleven (11) 1½' x 1½' squares from fabric **F**.

Five (5) 35½" x 2½" strips from fabric **G**.

One hundred forty four (144) templates from fabric **G**.

XXXXXXXXXXXXXXXXXXXXXXXXXXXXXXXXXXXXXXXXXXXXXXXXXXXXXXXXXXXX

Twelve (12) 7½' x 2½' strips from fabric **G**.

Twelve (12) 2½" x 1½" rectangles from fabric **G**.

Two (2) 40½' x 1½' strips from fabric **G**.

CONSTRUCTION

Sew all rights sides together with ¼" seam allowance.

- Take one hundred twenty (120) templates from fabric **C**, eighty (80) templates from fabric **A**, and thirty (30) templates from fabric **D**.
- Join them into 10 strips following Diagram 1.

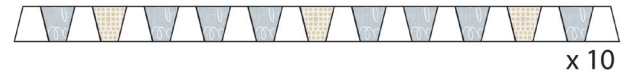


DIAGRAM 1

- Take sixteen (16) templates from fabric **B**, six (6) from fabric **E**, and twenty four (24) templates from fabric **G**.
- Join them into 2 strips following Diagram 2.

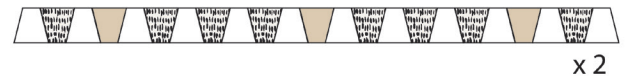


DIAGRAM 2

- Take twelve (12) $7\frac{1}{2}" \times 2\frac{1}{2}"$ strips from fabric **G**, and eleven (11) $7\frac{1}{2}" \times 1\frac{1}{2}"$ strips from fabric **B**.
- Join them:
- **G > B > G > B > G > B > G > B > G > B > G > B > G > B > G > B > G > B > G.**
- Subcut the strip set into five (5) strips of $1\frac{1}{2}"$.
- For fabric placement and attachment follow Diagram 3.

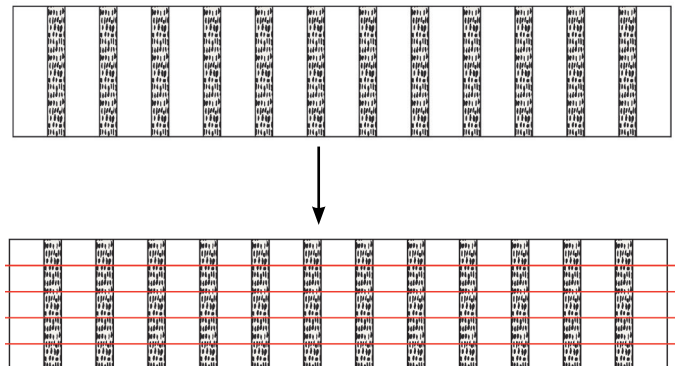


DIAGRAM 3

- Take twelve (12) $2\frac{1}{2}" \times 1\frac{1}{2}"$ strips from fabric **G**, and eleven (11) $1\frac{1}{2}" \times 1\frac{1}{2}"$ strips from fabric **F**.
- Join them into one strip following Diagram 4.



DIAGRAM 4

- Take five (5) $35\frac{1}{2}" \times 2\frac{1}{2}"$ strips from fabric **G**.
- Join all the pieces following Diagram 5.

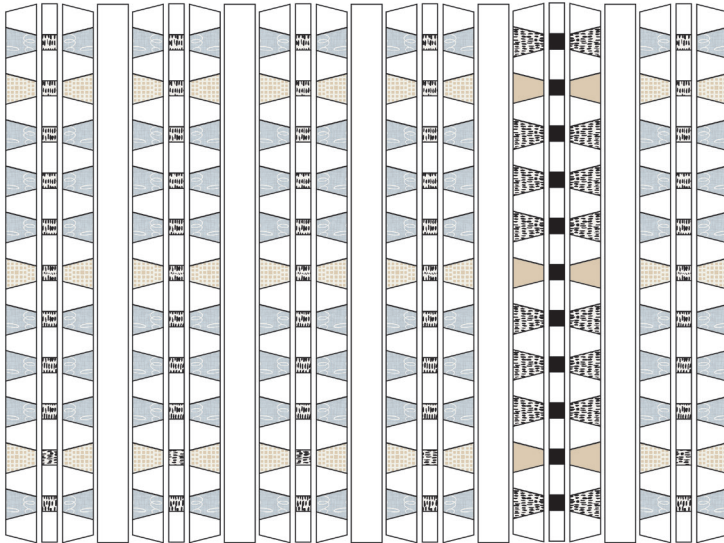


DIAGRAM 5

- Subcut the piece into a $40\frac{1}{2}" \times 32\frac{1}{2}"$ rectangle.
- Take two (2) $40\frac{1}{2}" \times 1\frac{1}{2}"$ strips from fabric **G**, and join them to the top and bottom of the block as shown in Diagram 6.

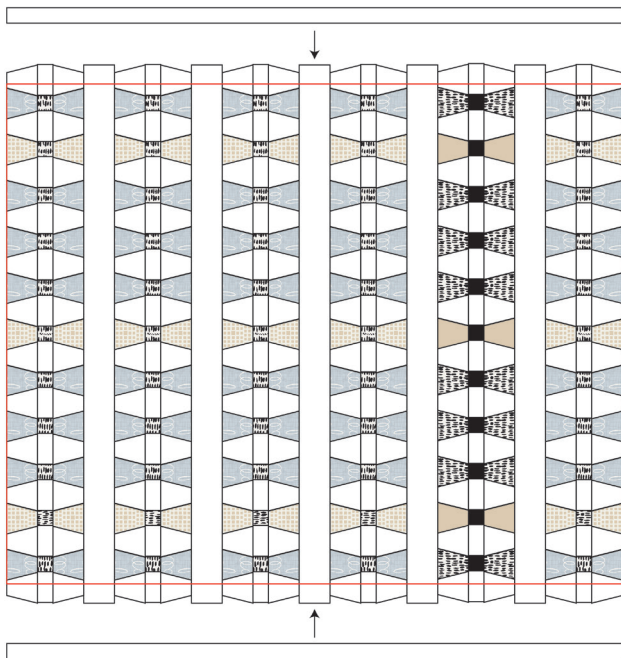


DIAGRAM 6



- Take one (1) $40\frac{1}{2}" \times 13"$ rectangle from fabric **A** and the fussy cut pieces from fabric **C**.
- Using steam a seam, place and edge stitch the pieces from fabric **C** on the rectangle from fabric **A**.
- Join it to the previous piece following Diagram 7.

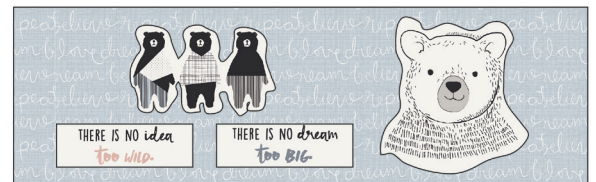
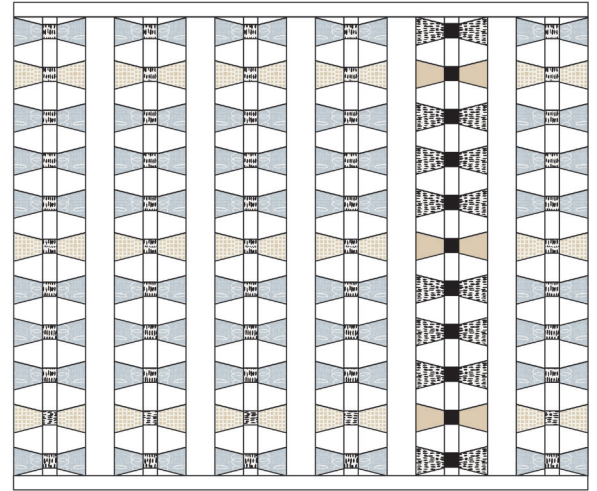


DIAGRAM 7

QUILT ASSEMBLY

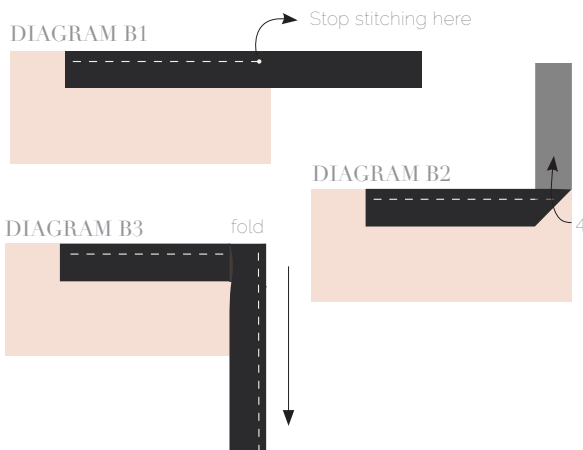
Sew rights sides together.

- Place BACKING FABRIC on a large surface wrong side up. Stretch it with masking tape against that surface.
- Place BATTING on top of backing fabric.
- Place TOP on top of the batting with right side facing up. Smooth away wrinkles using your hands.
- Pin all layers together and baste with basting thread, using long stitches. You can also use safety pins to join the layers.
- Machine or hand quilt starting at the center and working towards the corners. Remember that quilting motifs are a matter of personal preference. Have fun choosing yours!
- After you finished, trim excess of any fabric or batting, squaring the quilt to proceed to bind it.

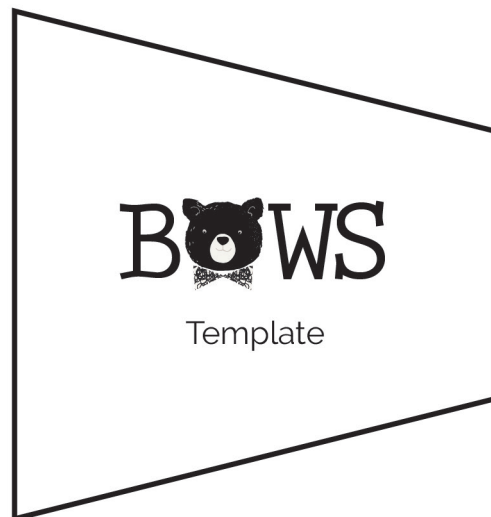
BINDING

Sew rights sides together.

- Cut enough strips $1\frac{1}{2}$ ' wide by the width of the fabric **D** to make a final strip 183' long. Start sewing the binding strip in the middle of one of the sides of the quilt, placing the strip right side down and leaving an approximated 5' tail. Sew with $\frac{1}{4}$ ' seam allowance (using straight stitch), aligning the strip's raw edge with the quilt top's raw edge.
- Stop stitching $\frac{1}{4}$ ' before the edge of the quilt (**DIAGRAM B 1**). Clip the threads. Remove the quilt from under the machine presser foot. Fold the strip in a motion of 45° and upward, pressing with your fingers (**DIAGRAM B2**). Hold this fold with your finger, bring the strip down in line with the next edge, making a horizontal fold that aligns with the top edge of the quilt (**DIAGRAM B3**). Start sewing at $\frac{1}{4}$ ' of the border, stitching all the layers. Do the same in the four corners of the quilt.
- Stop stitching before you reach the last 5 or 6 inches. Cut the threads and remove the quilt from under the machine presser foot. Lay the loose ends of the binding flat along the quilt edge, folding the ends back on themselves where they meet. Press them together to form a crease. Using this crease as the stitching line, sew the two open ends of the binding with right sides together (you can help yourself marking with a pencil if the crease is difficult to see).
- Trim seam to $\frac{1}{4}$ ' and press open. Complete the sewing. Turn binding to back of the quilt, turn raw edge inside and stitch by hand using blind stitch.



TEMPLATE



artgalleryfabrics.com

NOTE: While all possible care has been taken to ensure the accuracy of this pattern, We are not responsible for printing errors or the way in which individual work varies. Please read instructions carefully before starting the construction of this quilt. If desired, wash and iron your fabrics before starting to cut.

© 2018 Courtesy of Art Gallery Quilts LLC. All Rights Reserved.