

XXXXXX

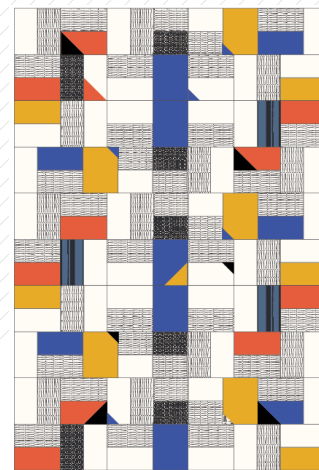
A vibrant patchwork quilt is draped over a curved, light-colored metal structure, possibly a playground slide. The quilt features a complex geometric pattern with large blocks of white, yellow, red, and blue, interspersed with smaller sections of black and grey. The fabric has a visible texture, and the colors are bright and saturated. The quilt is hanging from a curved metal bar, with its edges and folds creating a dynamic, flowing appearance. The background shows a grassy area and some trees, suggesting an outdoor setting. The lighting is bright, casting shadows on the ground.

FREE PATTERN

XXXXXXXXXXXXXXXXXXXXXXXXXXXX

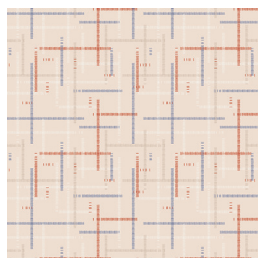
Berlin throw

QUILT DESIGNED BY AGF STUDIO *AGFstudio*



ALIGNED

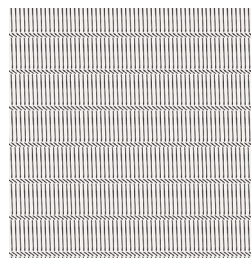
FABRICS DESIGNED BY AGF STUDIO



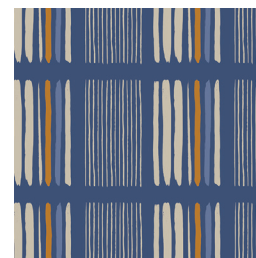
CAP-A-7000
INTERCONNECTED



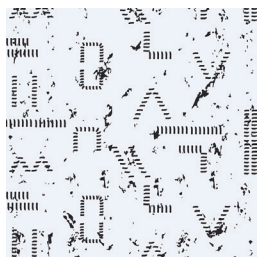
CAP-A-7001
SLANTED



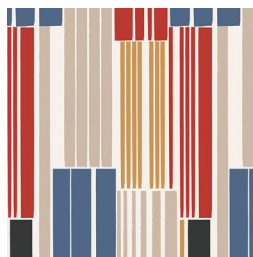
CAP-A-7002
HYPHENATED



CAP-A-7003
LINEUP



CAP-A-7004
DIVIDED



CAP-A-7005
ON LINES



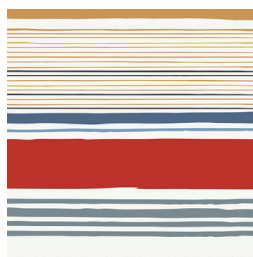
CAP-A-7006
PARALLEL



CAP-A-7007
LINKED



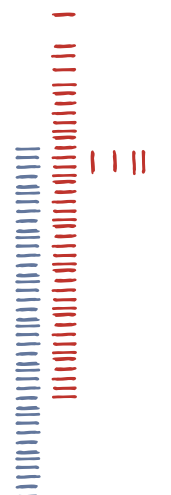
CAP-A-7008
DASH-ING



CAP-A-7009
LINE STUDY



FEEL THE DIFFERENCE © 2017 Courtesy of Art Gallery Quilts LLC. All Rights Reserved.



Berlin throw

FINISHED SIZE | 19' x 15'

FABRIC REQUIREMENTS

| | | |
|-----------------|-------------|-----------|
| Fabric A | PE-433 | 1 3/8 yd |
| Fabric B | CAP -A-7002 | 1 1/2 yd. |
| Fabric C | PE-461 | 1/2 yd |
| Fabric D | PE-459 | 1/2 yd. |
| Fabric E | PE-455 | 5/8 yd. |
| Fabric F | CAP-A-7006 | FE |
| Fabric G | PE-413 | FE |
| Fabric H | CAP-A-7008 | FQ |

BACKING FABRIC

Fabric **B** CAP-A-7002 4 yds
(Suggested)

CUTTING DIRECTIONS

1/4" seam allowances are included.
WOF means width of fabric.

Fabric **A**

- Forty (40) 4 1/2' x 8 1/2' strips
- Five (5) 6 1/2 x 4 1/2" rectangles
- One (1) 2 1/2" square
- Fabric **B**
- Forty (40) 4 1/2 x 8 1/2" rectangles
- Ten (10) 6 1/2 x 4 1/2" rectangles
- Fabric **C**:
- Ten (10) 4 1/2 x 8 1/2 rectangles
- One (1) 4 1/2" squares
- Fabric **D**
- five (5) 6 1/2 x 8 1/2" rectangles
- Five (5) 4 1/2 x 8 1/2" rectangles
- One (1) 4 1/2" square

XXXXXXXXXXXXXXXXXXXXXXXXXXXXXXXXXXXX

Fabric **E**

- Five (5) 6 1/2 x 8 1/2" rectangles
- Five (5) 4 1/2 x 8 1/2" rectangles
- Five (5) 2 1/2" squares

Fabric **F**:

- Three (3) 4 1/2 x 8 1/2 rectangles

•

Fabric **G**:

- Four (4) 4 1/2" squares
- Two (2) 2 1/2" squares

•

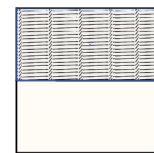
Fabric **H**:

- Two (2) 4 1/2 x 8 1/2 rectangles
- Five (5) 4 1/2 x 6 1/2" rectangles

CONSTRUCTION

Sew all rights sides together with 1/4" seam allowance.

- Create the following combinations using the 8 1/2 x 4 1/2" and 4 1/2' x 6 1/2' strips of fabrics .
- Twenty two (22) fabric **A & B** 8" in square blocks



(a)

- Five (5) fabric **A & B** 6 x 8" in rectangle blocks



(b)

- Four (4) fabric **B & E** 8" square blocks



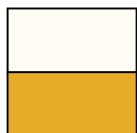
(c)

- Four (4) fabric **B & E** 8" square blocks



(d)

- Five (5) fabric **A & D** 8" in blocks



(f)

- Five (5) fabric **B & H** 6 x8" in blocks



(g)

- One (1) fabric **A & H** 8 8 1/2" block



(n)

- Three (3) fabric **A & F** 8 8 1/2" block



(q)

- You will create different fabric combinations using the Half Square Triangle (HST) technique.
- Place fabrics right sides facing together
- Draw a diagonal in the middle
- Stitch and trim edges
- Refer to the diagram for proper fabric attachment

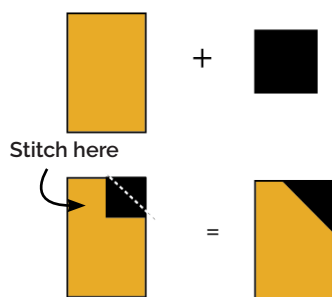


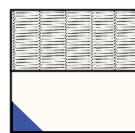
DIAGRAM 4

- Create the following combinations
- Three (3) fabric **B, C & G** 4 1/2' combinations (refer to diagram)



(e)

- (2) fabric **A, B & E** (2 ½' squares) on corner



(h)

- One (1) fabric **D & G** (2½" square) on right corner



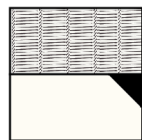
(i)

- Two (2) fabric **D & E** (2 ½" squares) on top right corner



(j)

- One (1) fabric **A, B & G** (2 ½" square) on fabric A right corner



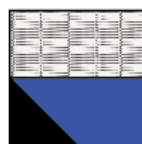
(K)

- One (1) fabric **D & E** (4 ½" squares) on bottom right corner



(L)

- One (1) fabric **D, E & B** (4 ½" square) on bottom left corner



(m)

- One (1) fabric **D & B** (2 ½" square) on bottom left corner



(o)

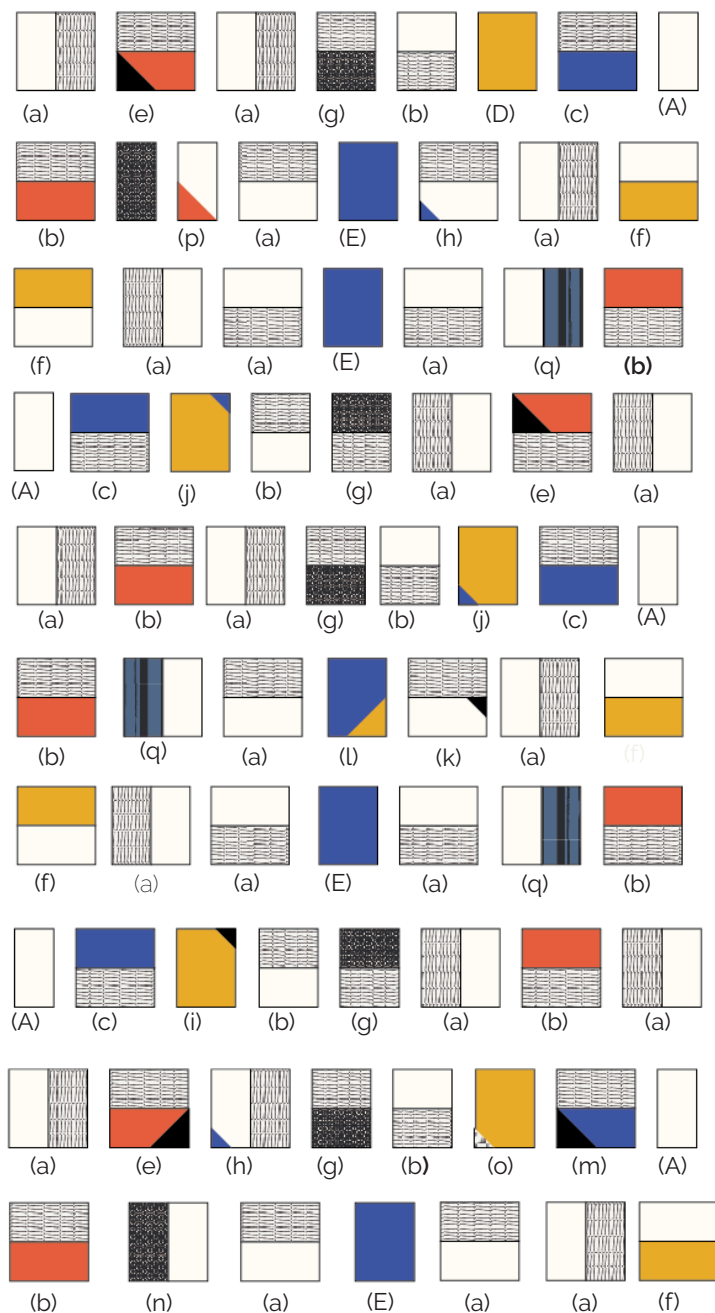
- One (1) fabric **A & C** (4 ½" square) on bottom left corner



(p)

QUILT ASSEMBLY

- Follow the diagram below for block arrangements.
- Sew in rows, pressing seams in one direction for the entire row.
- Press seams in the alternate direction when sewing each consecutive row.



- Quilt as desired. We created horizontal and vertical lines with a 4" in separation to add a modern texture.

- In this case we did NOT use batting. We just added a grid texture with contrasting thread. It is up to you to create any design with thread or just leave the bed throw simple.
- Place backing fabric on top of the front side of your throw. Stitch at $\frac{1}{4}$ " in all around.
- Leave a 6" in hole and flip inside out.
- You are done!



artgalleryfabrics.com

NOTE: While all possible care has been taken to ensure the accuracy of this pattern, We are not responsible for printing errors or the way in which individual work varies. Please read instructions carefully before starting the construction of this quilt. If desired, wash and iron your fabrics before starting to cut.