

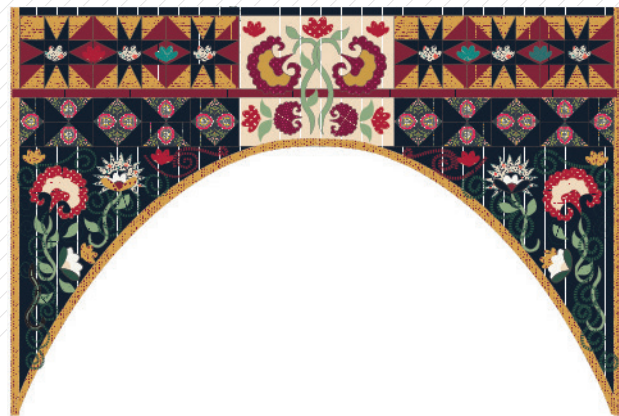
# Holy Herbs





# Holy Herbs

HEADBOARD DESIGNED BY AGF STUDIO



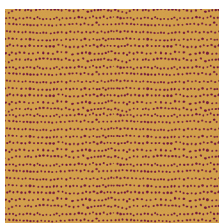
## INDIEfolk

FABRICS DESIGNED BY PAT BRAVO

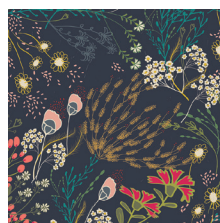
MEMORIES



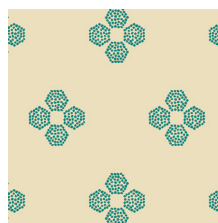
IFL-46300  
KHOKHLOMA BURGUNDIA



IFL-46301  
FLECKS AUBURN



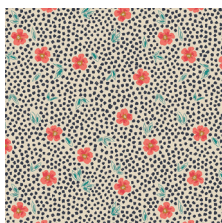
IFL-46302  
MEADOW DIM



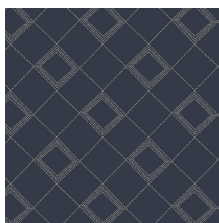
IFL-46303  
DROPLET PETAL MALACHITE



IFL-46304  
TRINKET VIVID



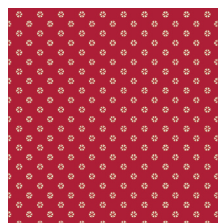
IFL-46305  
MIST FLORA LUMINOUS



IFL-46307  
TARTAN MIDNIGHT



IFL-46308  
VERDANT BLOOM



IFL-46309  
WHIRL ROUGE

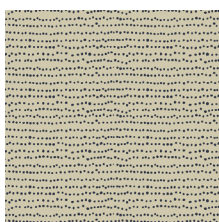


IFL-46310  
TRÖJKAT SUNRISE

FABLES



IFL-56300  
KHOKHLOMA GLOOM



IFL-56301  
FLECKS INDIGO



IFL-56302  
MEADOW VIVID



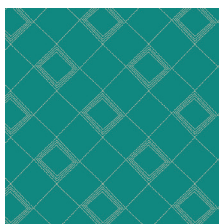
IFL-56303  
DROPLET PETAL STORM



IFL-56304  
TRINKET BLUSH



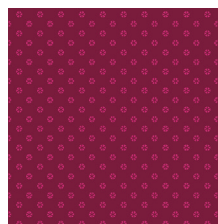
IFL-56306  
PATHWAYS RICH



IFL-56307  
TARTAN TEAL



IFL-56308  
POWDER BLOOM



IFL-56309  
WHIRL MAUVE



IFL-56310  
TRÖJKAT DESERT



FEEL THE DIFFERENCE © 2015 Courtesy of Art Gallery Quilts LLC. All Rights Reserved.



FINISHED SIZE | 50 x 75"

## FABRIC REQUIREMENTS

Fabric <b>A</b>	IFL-56301	1 yd
Fabric <b>B</b>	IFL-46309	FQ
Fabric <b>C</b>	IFL-46305	FE
Fabric <b>D</b>	IFL-46307	FE
Fabric <b>E</b>	IFL- 56309	FQ
Fabric <b>F</b>	IFL-56300	1/4 yd
Fabric <b>G</b>	PE-466	FE
Fabric <b>H</b>	PE-447	FQ
Fabric <b>I</b>	PE -436	FE
Fabric <b>J</b>	PE-433	FE
Fabric <b>K</b>	PE-421	1/16yd
Fabric <b>L</b>	PE-428	3 7/8 yds
Fabric <b>M</b>	PE - 427	7/8' yd

### BACKING FABRIC

Fabric **L** PE-428 1 7/8 *(Included)*

### BINDING FABRIC

Fabric **A** IFL-56301 *(included)*

## CUTTING DIRECTIONS

*1/4" seam allowances are included.  
WOF means width of fabric.*

#### Fabric **A**:

Cut thirteen(13) 3 7/8" squares.  
Cut twelve (12) template 2 triangles.  
Cut four (4) template **10**.  
Cut two (2) template **6**.  
Cut one (2) template **14**  
Cut two (2) 38 x 6 1/2' rectangles

#### Fabric **B**:

Cut four (4) template **10**  
Cut two (2) template **11**  
Cut one (1) template **12**  
Cut two (2) template **5**

#### Fabric **C**:

Cut two (2) template **4**  
Cut six (6) template **11**

#### Fabric **D**:

Cut four (4) template **11**

#### Fabric **E**:

Cut two (2) template **5**  
Cut two (2) template **3**  
Cut one (2) template **15**

XXXXXXXXXXXXXXXXXXXXXXXXXXXXXXXXXXXX

#### Fabric **F**:

Cut eighteen (18) 3 7/8" squares.

#### Fabric **G**:

Cut two (2) template **14**.

#### Fabric **H**:

Cut two (2) template **9**.  
Cut six (6) template **8**.

#### Fabric **I**:

Cut one (1) 9 1/2" x 19 1/2" rectangle.  
Cut one (1) 19 1/2" x 6 1/2" rectangle.  
Cut two (2) template **6**.  
Cut two (2) template **15**.

#### Fabric **J**:

Cut two (2) template **11**.  
Cut two (2) template **13**.

#### Fabric **K**:

Cut (2) template **2**

#### Fabric **L**:

Cut four (4) template **1**.  
Cut twenty four (24) 3 7/8" squares.  
Cut six (6) 3 1/2" x 9 1/2" rectangles.  
Cut twelve (12) 3 1/2" squares.  
Cut two (2) 38 x 16 1/4 rectangles (backing)

#### Fabric **M**:

Cut eleven (11) 3 7/8" squares.  
Cut twelve (12) template 2 triangles.  
Cut one (2) WOF x 1 1/2" strips

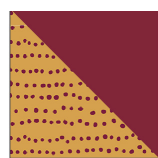
## CONSTRUCTION

*Sew all rights sides together with 1/4" seam allowance.*

Start with the construction of the HST:

- To accomplish the HST construction use the 3 7/8" squares from fabrics **L**, **MA** and **F**.
- Using a water-soluble marker or a pencil, mark a diagonal line across the wrong side of all the mentioned fabric squares.
- Place fabric **A** & **M** marked squares, right sides together.
- Sew 1/4" on both sides of the marked line.
- Cut piece in half along the drawn line.
- Repeat with fabric **L** & **F** 3 7/8" squares.



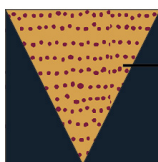


**F & L**  
36 HST

DIAGRAM 1

- Now attach template **2** appliqué on top of the 3 1/2" squares.
- Stitch with a 1/4" seam allowance. You can unravel the edges to create a cool texture on the blocks.

You should have twelve (12) fabric **A & L** squares.



Attach fabric **M** templates 2 to 3 1/2 x 9 1/2". rectangles. (Remember to unravel the seam allowances if you want!)



- Follow the diagram to create the star blocks

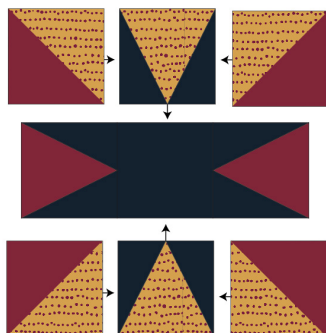
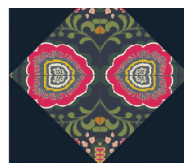


DIAGRAM 2

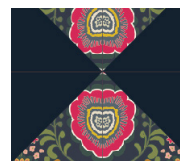
- You should have SIX (6) g 1/2' blocks.
- Join 3 blocks together.
- Attach fabric **I** g 1/2 x 19 1/2" rectangles.
- Use 1 1/2" x WOF strips from fabric **M** to create a burgundy line below the first row of the Head board.



- Start with fabrics **F & L** HST.
- Create the following blocks:



A



B



C



D

- You should have:
- Four (4) **A** blocks
- Four (4) **B** blocks
- Two (2) **C** and **D** columns
- Create two rows for each side following the diagram below

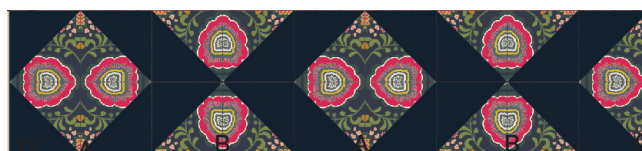


DIAGRAM 3

- Attach fabric **1** 19 1/2 x 6 1/2" rectangle in between the two rows.
- Attach template **1** sides to the row you just made.
- Sew all rows together and now get ready to have some fun with the appliqués!



- Use steam a seam fusible interfacing with all the floral templates to hold them in place.
- To add more security, edge stitch around each appliqué to hold them in place.
- The scaled diagrams below will show you exactly where to place your appliqués. It will be easier to have a bigger reference for correct placement.
- However, it is up to you if you want to add more of the same appliqués or even hand stitching with embroidery thread to enhance your bed top. Remember that this is a unique piece and creating more texture and details will only make it more and more beautiful!
- Your head board is designed to be hanged in a curtain holder just on top of your bed,
- Sew your fabric **A** 38 1/2 x 6 1/2" rectangles together and attach it to the top. Fold it half and press, this will be attached to your backing fabric.

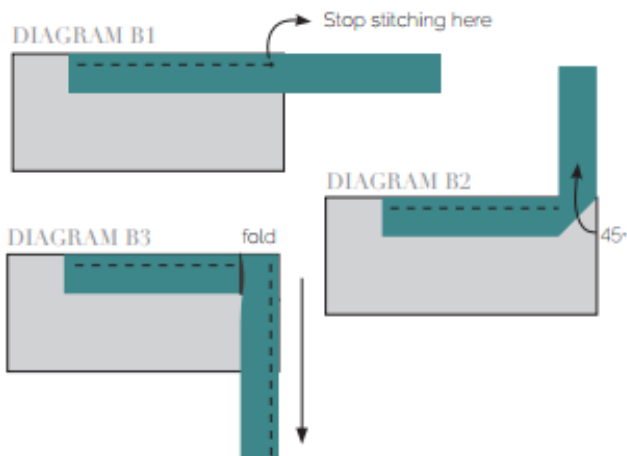
## FINAL ASSEMBLY

*Sew rights sides together.*

- Use the two (2) fabric **L** 38 x 16 3/4" rectangles and two from template **1**
- Sew everything together creating the same shape as your head board.
- Place **BACKING FABRIC** on top of the right side of your wall art.
- Pin both layers together and stitch at a 1/4" seam allowance.
- Leave a small opening and flip right side out, making sure the corners are turned out nicely.
- Hand stitch the opening and your wall art should be ready, enjoy!

## BINDING

- Cut enough strips 1½" wide by the width of the fabric **A** to make a single strip 221" in long. Start sewing the binding strip in the middle of one of the sides of the bed top, placing the strip right side down and leaving an approximated 5" tail. Sew with ¼" seam allowance (using straight stitch), aligning the strip's raw edge with the bed top's raw edge.
- Stop stitching ¼" before the edge of the bed top (DIAGRAM B1). Clip the threads. Remove the piece from under the machine presser foot. Fold the strip in a motion of 45° and upward, pressing with your fingers



artgalleryfabrics.com

*NOTE:*

*While all possible care has been taken to ensure the accuracy of this pattern, We are not responsible for printing errors or the way in which individual work varies.*

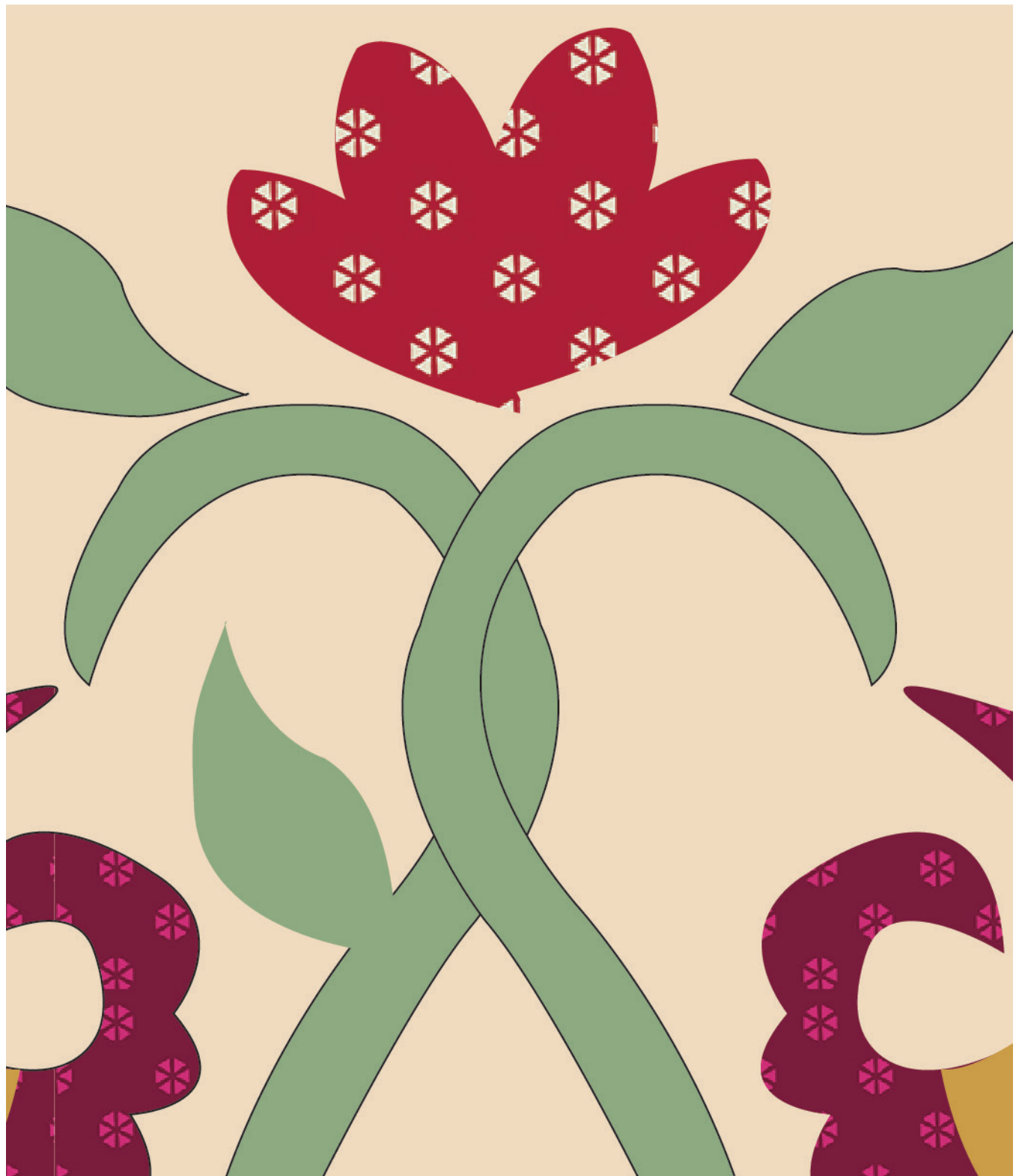
*Please read instructions carefully before starting the construction of this quilt. If desired, wash and iron your fabrics before starting to cut.*



- Appliqué placement on top of Fabric **I**:





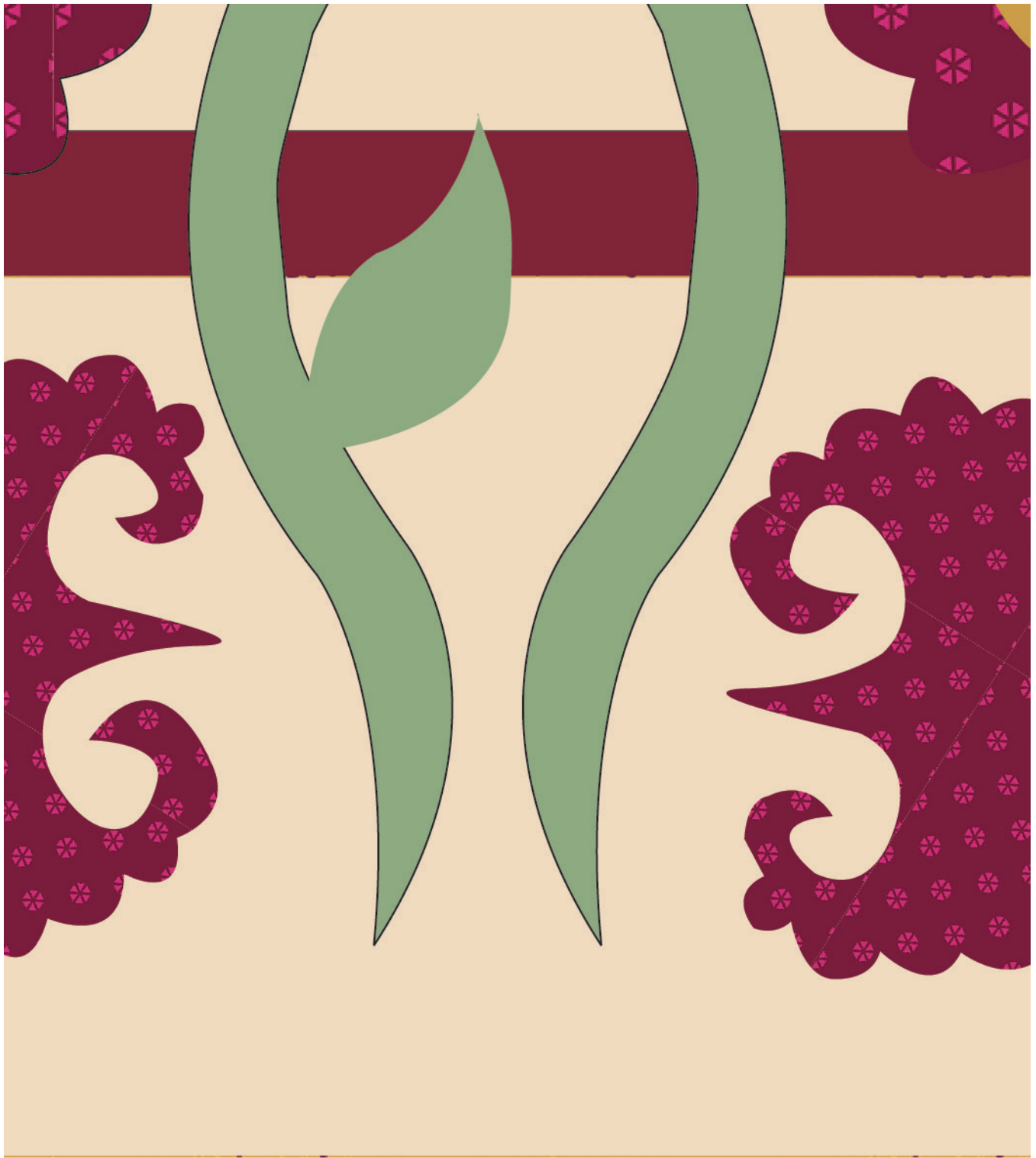








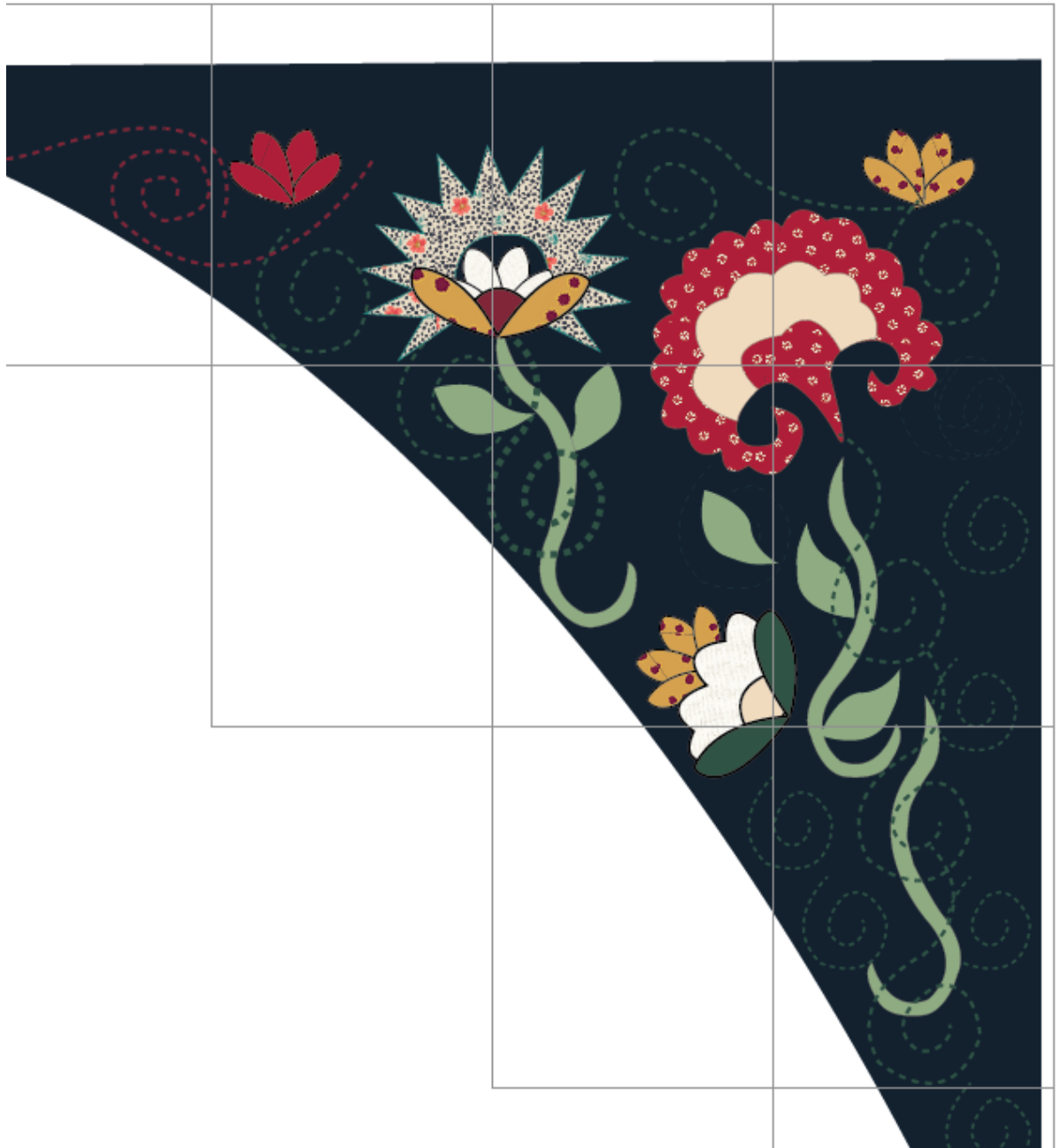








- Appliqué placement on top of Fabric L



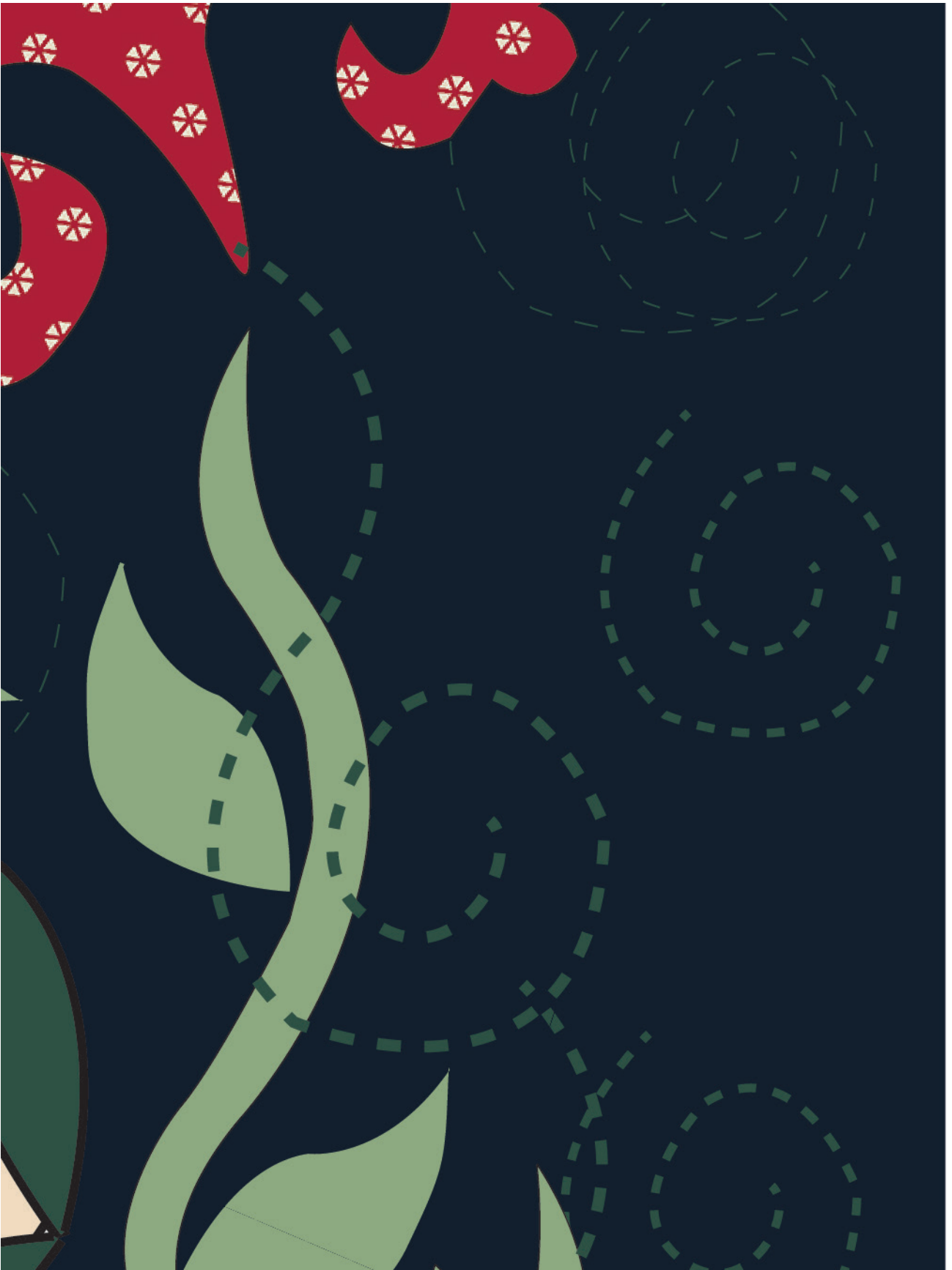


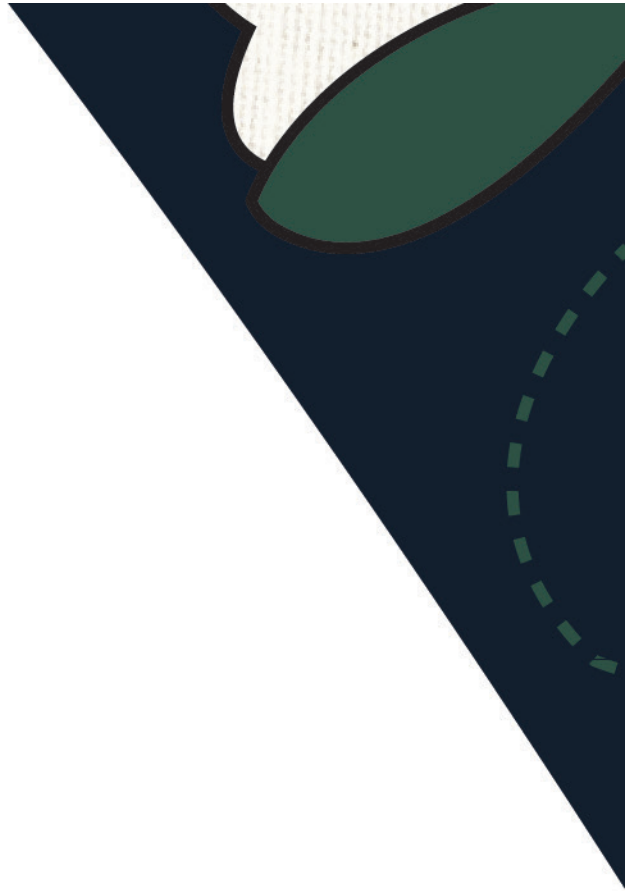




artgalleryfabrics.com

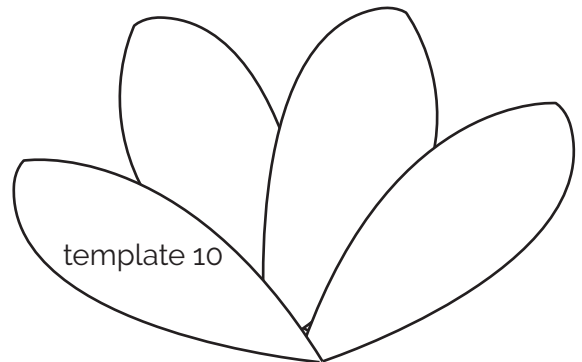
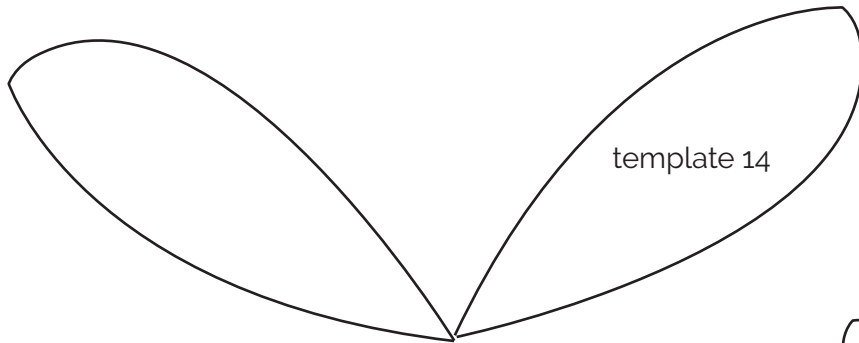
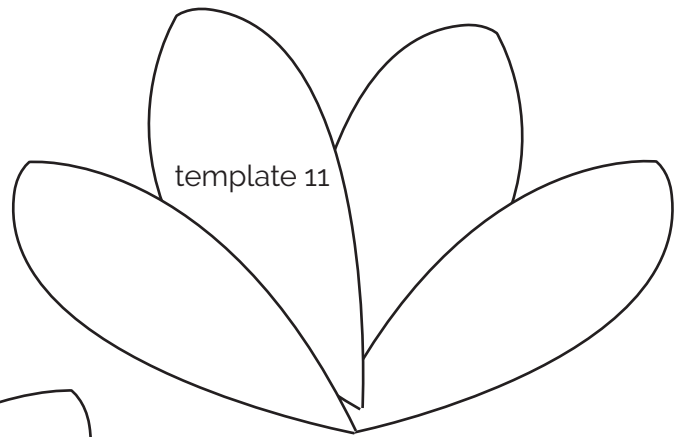
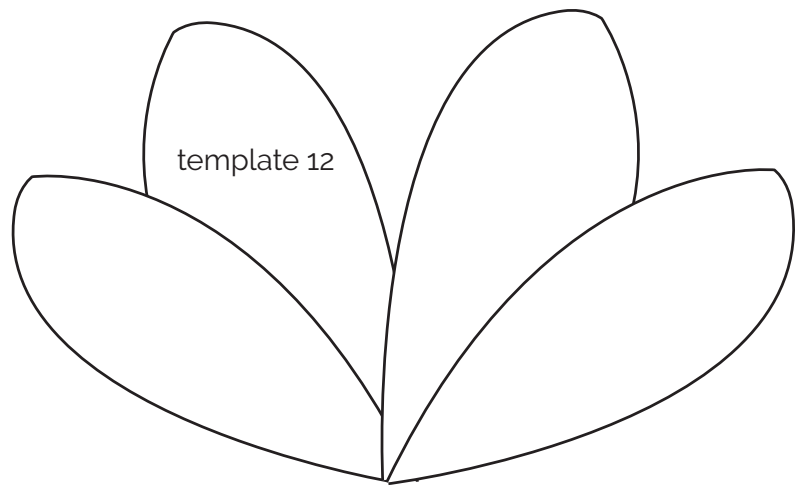
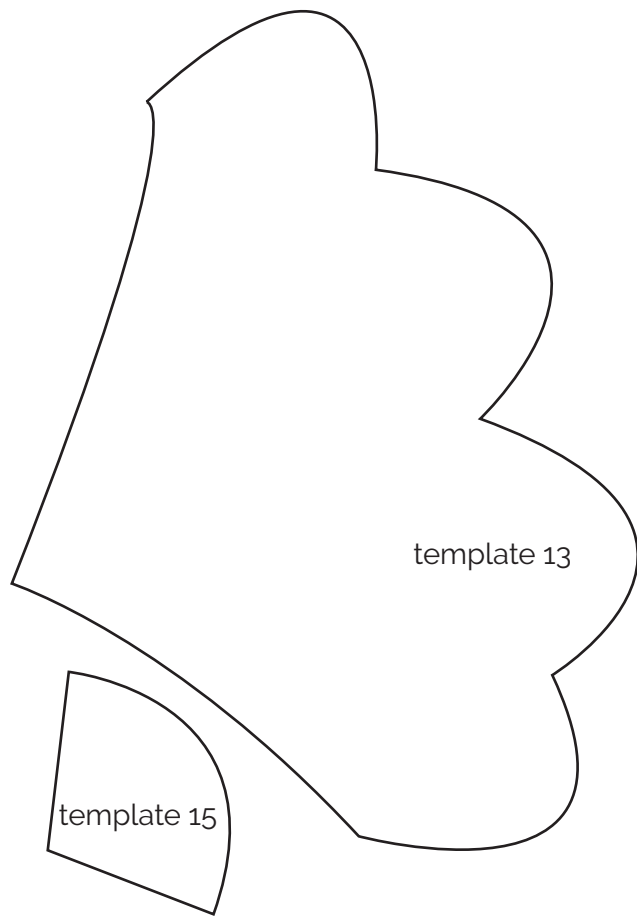


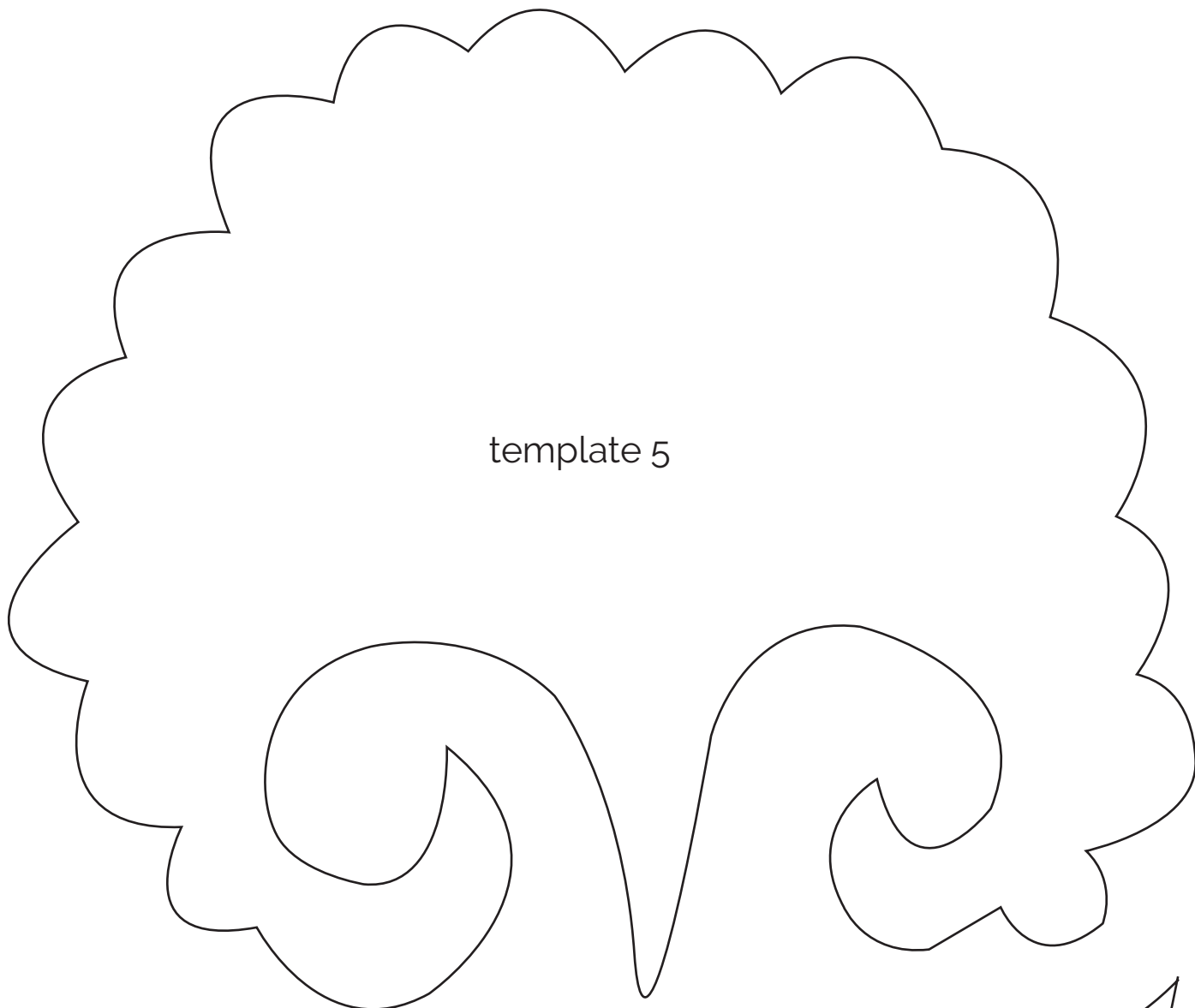




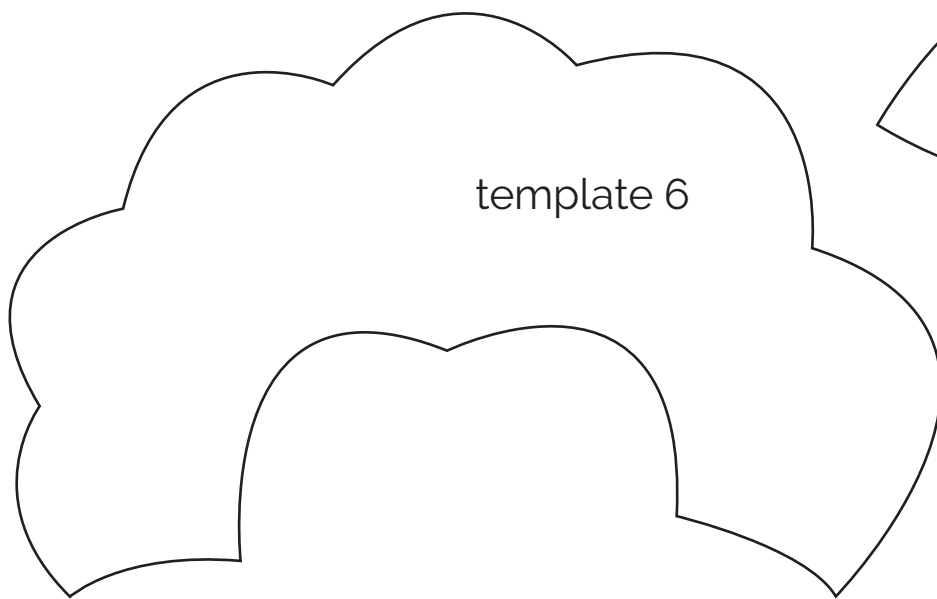




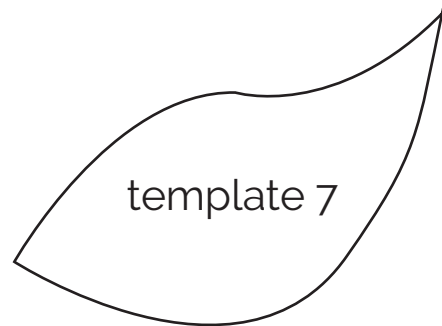




template 5

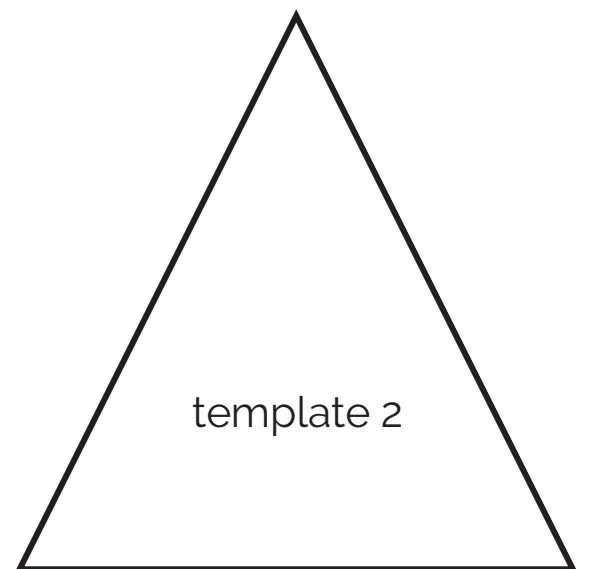
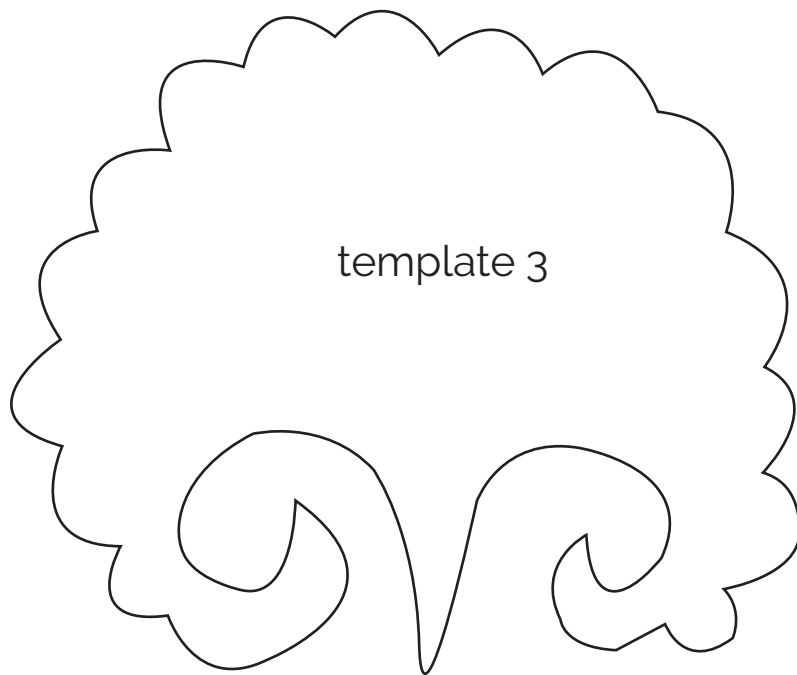
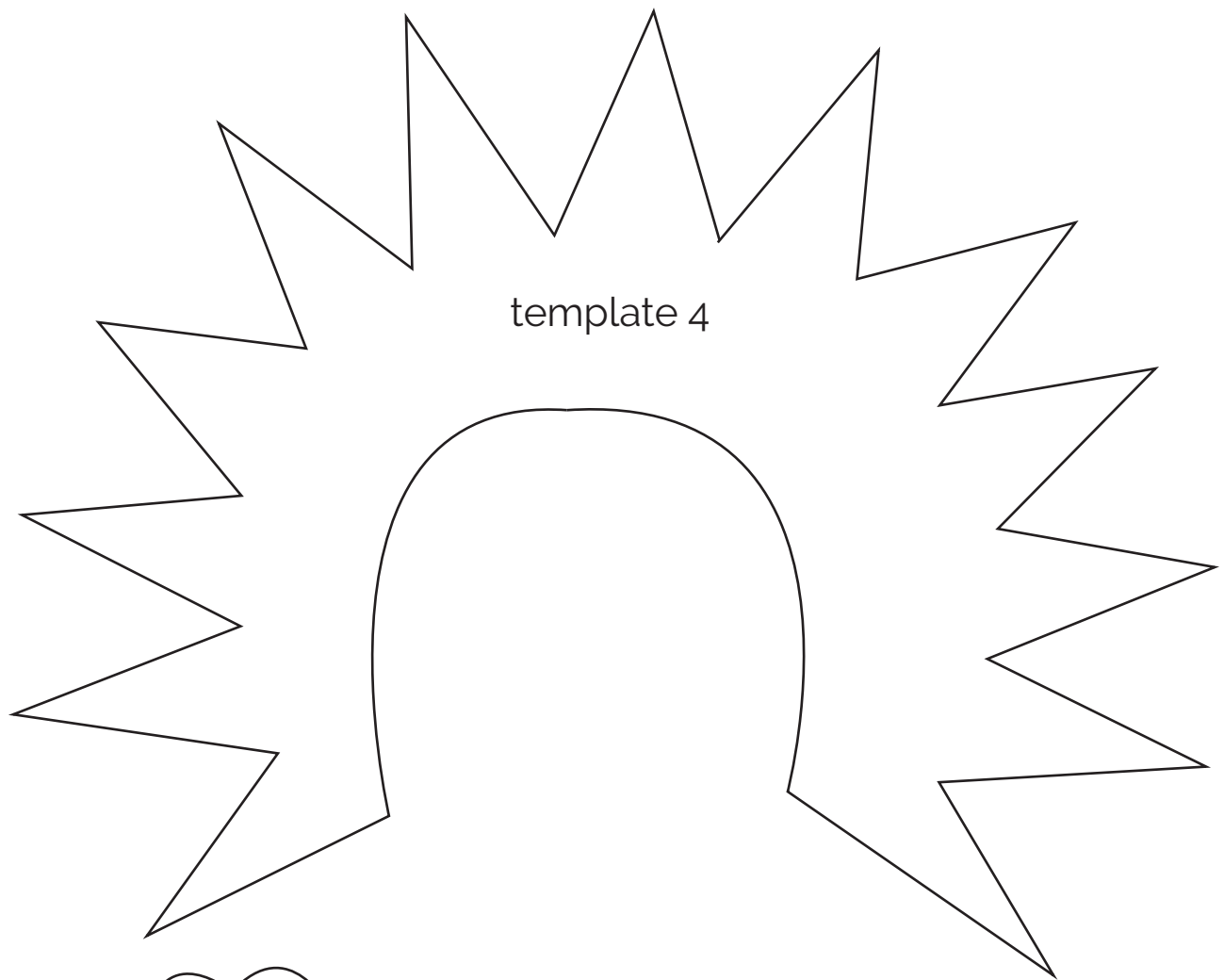


template 6

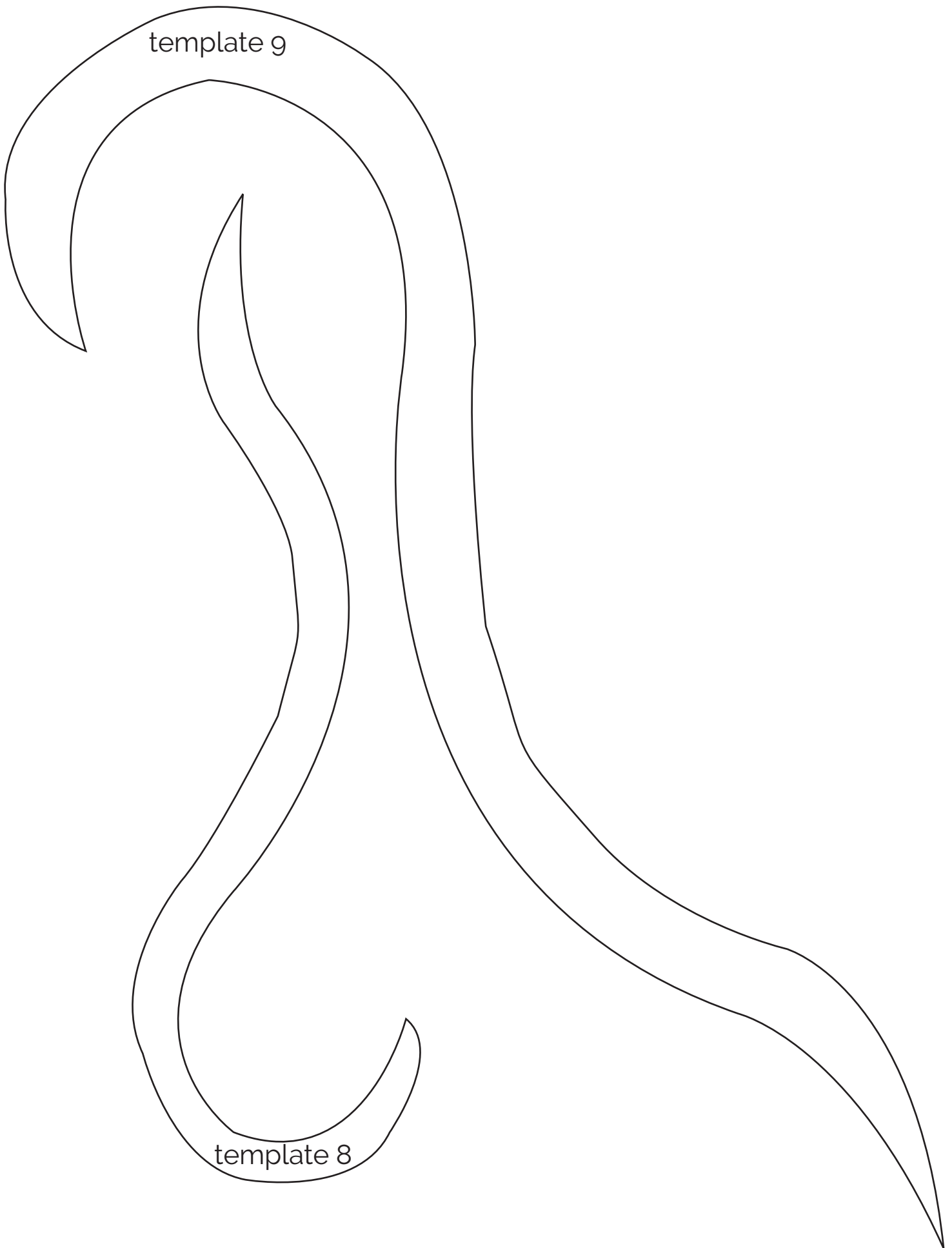


template 7

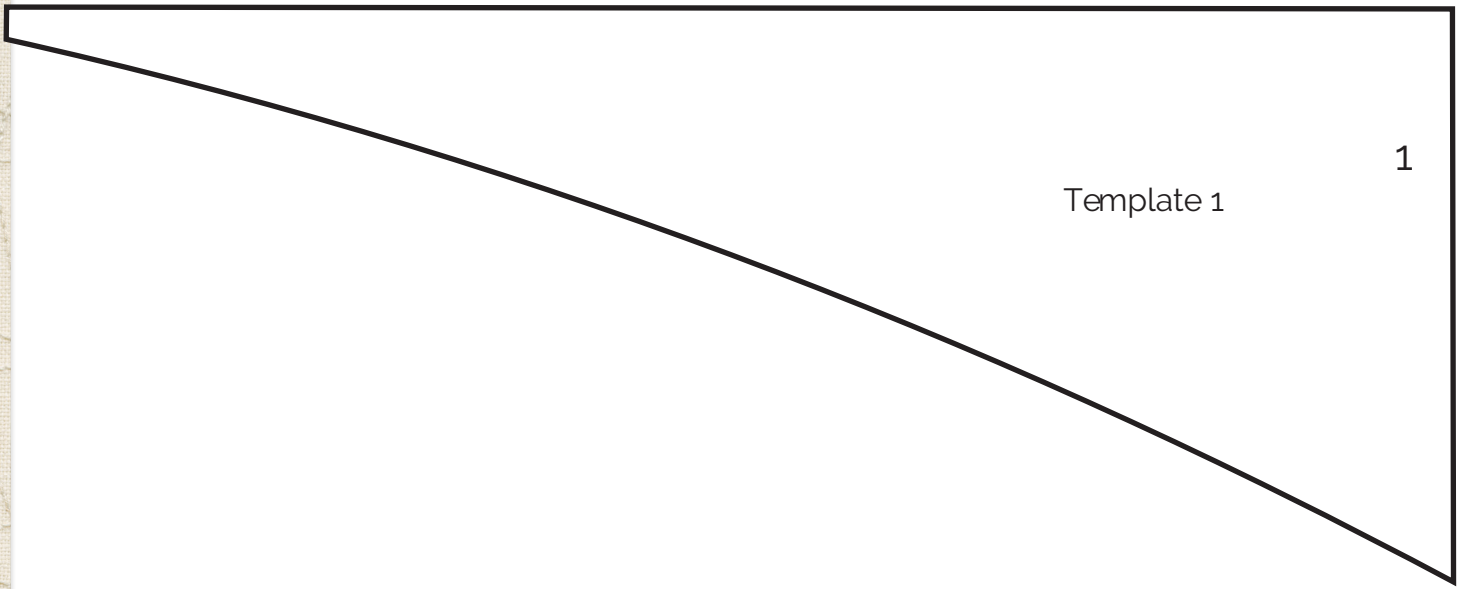




template 9



template 8







## Template 1

Template 1



## Template 1

## Template 1

## Template 1

8



