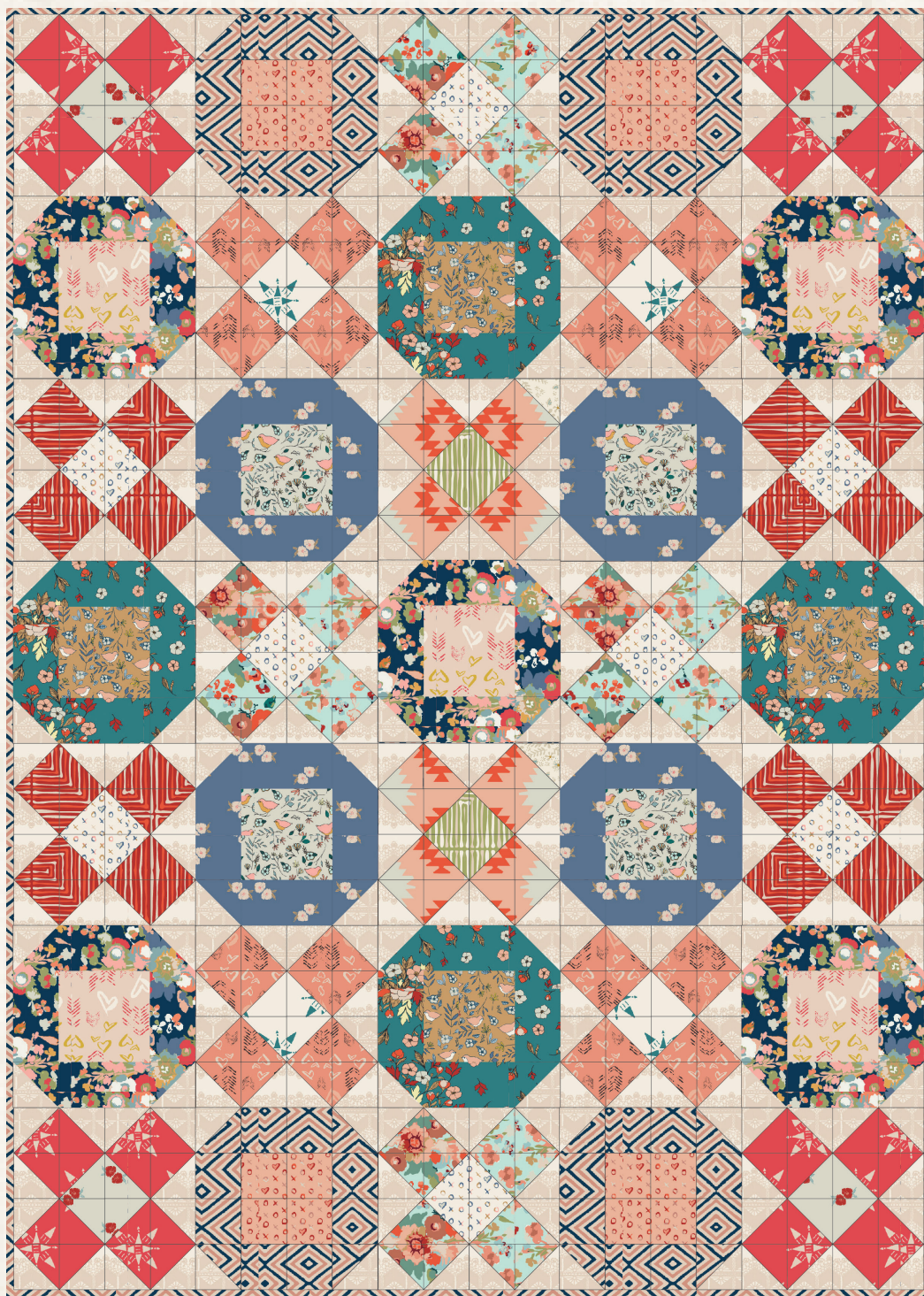


X's & O's



X's & O's

Maureen
Cracknell

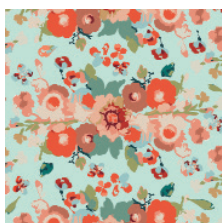
QUILT DESIGNED BY MAUREEN CRACKNELL

Love & Story

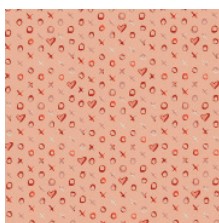
FABRICS DESIGNED BY MAUREEN CRACKNELL



ENAMEORED



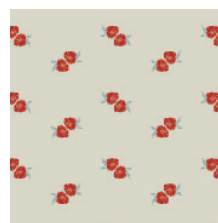
IVS-38800
REFLECTION OF LOVE LIGHT



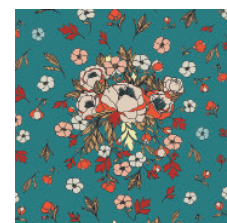
IVS-38801
HUGS & KISSES WARM



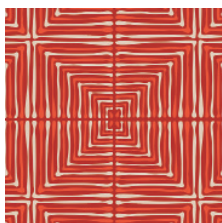
IVS-38802
DARING TRIBAL NOIR



IVS-38803
FLOWER STAMP CHARM



IVS-38804
SOULMATE BLOOMS LUST



IVS-38805
DARLING ECHOES RED



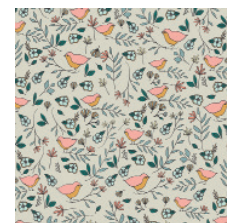
IVS-38806
DELICATE VEIL



IVS-38807
HEARTS FLETCHING BLUSH

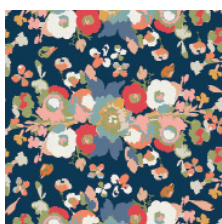


IVS-38808
COMPASSION TEAL

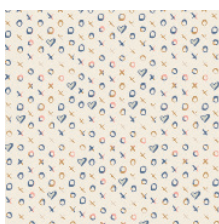


IVS-38809
LOVEBIRDS CELESTE

ENCHANTED



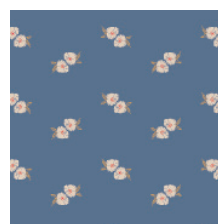
IVS-48800
REFLECTION OF LOVE DEEP



IVS-48801
HUGS & KISSES FRESH



IVS-48802
DARING TRIBAL SUNSET



IVS-48803
FLOWER STAMP SPELL



IVS-48804
SOULMATE BLOOMS FLIRT



IVS-48805
DARLING ECHOES VERT



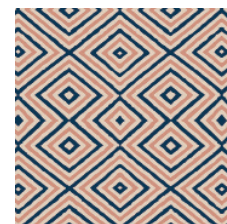
IVS-48807
HEARTS FLETCHING GOLD



IVS-48808
COMPASSION RUBY



IVS-48809
LOVEBIRDS AMBER



IVS-48810
MIXED EMOTIONS



FEEL THE DIFFERENCE ©2016 Courtesy of Art Gallery Quilts LLC. All Rights Reserved.



FINISHED SIZE | 60" x 84"

FABRIC REQUIREMENTS

Fabric A	LVS-48808	½ yd.
Fabric B	LVS-38803	¼ yd.
Fabric C	LVS-48810	1 ⅓ yd.
Fabric D	LVS-48809	¼ yd.
Fabric E	LVS-38809	¼ yd.
Fabric F	LVS-48807	¼ yd.
Fabric G	LVS-38801	¼ yd.
Fabric H	LVS-38807	½ yd.
Fabric I	LVS-38808	¼ yd.
Fabric J	LVS-38800	½ yd.
Fabric K	LVS-48801	¼ yd.
Fabric L	LVS-48800	1 yd.
Fabric M	LVS-38805	½ yd.
Fabric N	LVS-38804	⅔ yd.
Fabric O	LVS-48803	⅔ yd.
Fabric P	LVS-48802	¼ yd.
Fabric Q	LVS-48805	¼ yd.
Fabric R	LVS-38806	1 ⅝ yd.

BACKING FABRIC

LVS-48800 5 ¼ yds. (Suggested)

BINDING FABRIC

LVS-48810- included

CUTTING DIRECTIONS

¼" seam allowances are included.

Fabric A :	Eight (8) 7 ¾" squares
Fabric B :	Two (2) 7 ¾" squares
Fabric C :	Two (2) 7 ¾" squares
	Sixteen (16) 3 ½" x 6 ½" rectangles
Fabric D :	Four (4) 6 ½" squares
Fabric E :	Four (4) 6 ½" squares
Fabric F :	Five (5) 6 ½" squares
Fabric G :	Four (4) 6 ½" squares
Fabric H :	Eight (8) 7 ¾" squares
Fabric I :	Two (2) 7 ¾" squares
Fabric J :	Eight (8) 7 ¾" squares
Fabric K :	Four (4) 7 ¾" squares
Fabric L :	Seven (7) 7 ¾" squares
Fabric M :	Eight (8) 7 ¾" squares

XXXXXXXXXXXXXXXXXXXXXXXXXXXXXXXXXXXX

Fabric N :	Two (2) 7 ¾" squares
	Sixteen (16) 3 ½" x 6 ½" rectangles
Fabric O :	Two (2) 7 ¾" squares
	Sixteen (16) 3 ½" x 6 ½" rectangles
Fabric P :	Four (4) 7 ¾" squares
Fabric Q :	One (1) 7 ¾" squares
Fabric R :	Thirty-five (35) 7 ¾" squares

CONSTRUCTION

Sew all rights sides together (RST) with ¼" seam allowance.

- © The cutting directions for this quilt are written to be used with the 8 At a Time method of making Half Square Triangle (HST) units.
- © To make eight HST units of a finished size of 3' you start with two 7 ¾" squares of fabric. Place them RST and mark the diagonals, then sew on either side of both diagonal lines.
- © Finally, cut along the marked lines and also make vertical and horizontal cuts through the center. Press open and trim to 3 ½" squares. See diagram below.
- © We also have a video tutorial at: <https://www.youtube.com/watch?v=84ma1tOiyNI> (AGF Quilt Block Collection: Moroccan Quilt Block Tutorial)

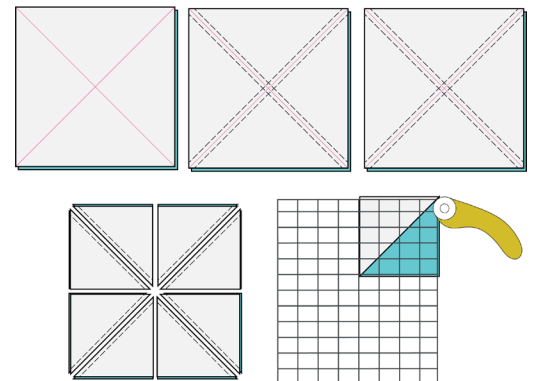


DIAGRAM 1

X Block A- Make 4

- © Pair two 7 ¾" squares in Fabric **A** with two 7 ¾" squares in Fabric **B** to make 16 HST units total.
- © Pair six 7 ¾" squares in Fabric **A** with six 7 ¾" squares in Fabric **R** to make 48 HST units total.
- © Arrange your HST into rows as shown, with **A/B** units in the center and **A/R** units on the outer edge. Refer to the diagram for orientation.

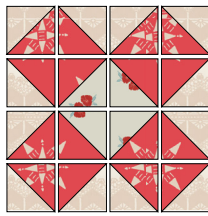


DIAGRAM 2

X Block B- Make 4

- © Pair two 7 $\frac{3}{4}$ " squares in Fabric **J** with two 7 $\frac{3}{4}$ " squares in Fabric **K** to make 16 HST units total.
- © Pair six 7 $\frac{3}{4}$ " squares in Fabric **J** with six 7 $\frac{3}{4}$ " squares in Fabric **R** to make 48 HST units total.



DIAGRAM 3

X Block C- Make 4

- © Make 16 Fabric **H/I** HST units total.
- © Make 48 Fabric **H/R** HST units total.



DIAGRAM 4

X Block D- Make 4

- © Make 16 Fabric **M/K** HST units total.
- © Make 48 Fabric **M/R** HST units total.



DIAGRAM 5

X Block E- Make 2

- © Make 8 Fabric **P/Q** HST units total.
- © Make 24 Fabric **P/R** HST units total.



DIAGRAM 6

XXXXXXXXXXXXXXXXXXXXXXXXXXXXXXXXXXXX

O Block F- Make 4

- © Pair two 7 $\frac{3}{4}$ " squares in Fabric **C** with two 7 $\frac{3}{4}$ " squares in Fabric **R** to make 16 HST units total.
- © Refer to diagram for orientation of HST and rectangles. Sew together rows, then sew rows together to complete block. Measurements of pieces for all O blocks are the same (Blocks G, H, I).

- © Row 1: HST > Fabric **C** 3 $\frac{1}{2}$ " x 6 $\frac{1}{2}$ " rectangle > HST
- © Row 2: Fabric **C** 3 $\frac{1}{2}$ " x 6 $\frac{1}{2}$ " rectangle > Fabric **G** 6 $\frac{1}{2}$ " Square > Fabric **C** 3 $\frac{1}{2}$ " x 6 $\frac{1}{2}$ " rectangle
- © Row 3: HST > Fabric **C** 3 $\frac{1}{2}$ " x 6 $\frac{1}{2}$ " rectangle > HST

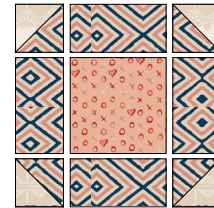


DIAGRAM 7

O Block G- Make 5

- © Make 24 Fabric **L/R** HST units total. (set 4 aside)
- © Row 1: HST > Fabric **L** rectangle > HST
- © Row 2: Fabric **L** rec. > Fabric **G** Square > Fabric **C** rec.
- © Row 3: HST > Fabric **L** rectangle > HST



DIAGRAM 8

O Block H- Make 4

- © Make 16 Fabric **N/R** HST units total.
- © Row 1: HST > Fabric **N** rectangle > HST
- © Row 2: Fabric **N** rec. > Fabric **D** Square > Fabric **N** rec.
- © Row 3: HST > Fabric **N** rectangle > HST



DIAGRAM 9

O Block I- Make 4

- © Make 16 Fabric **O/R** HST units total.
- © Row 1: HST > Fabric **O** rectangle > HST
- © Row 2: Fabric **O** rec. > Fabric **E** Square > Fabric **O** rec.
- © Row 3: HST > Fabric **O** rectangle > HST



DIAGRAM 10

ASSEMBLING THE TOP

Sew all rights sides together with 1/4" seam allowance. Press open.

© Arrange and sew blocks following quilt illustration and Diagram 11.

© Sew the seven rows of blocks together. Press all the seams in one direction, alternating directions from row to row.

© Sew the rows together to complete the quilt top, alternating starting point of sewing from row to row.

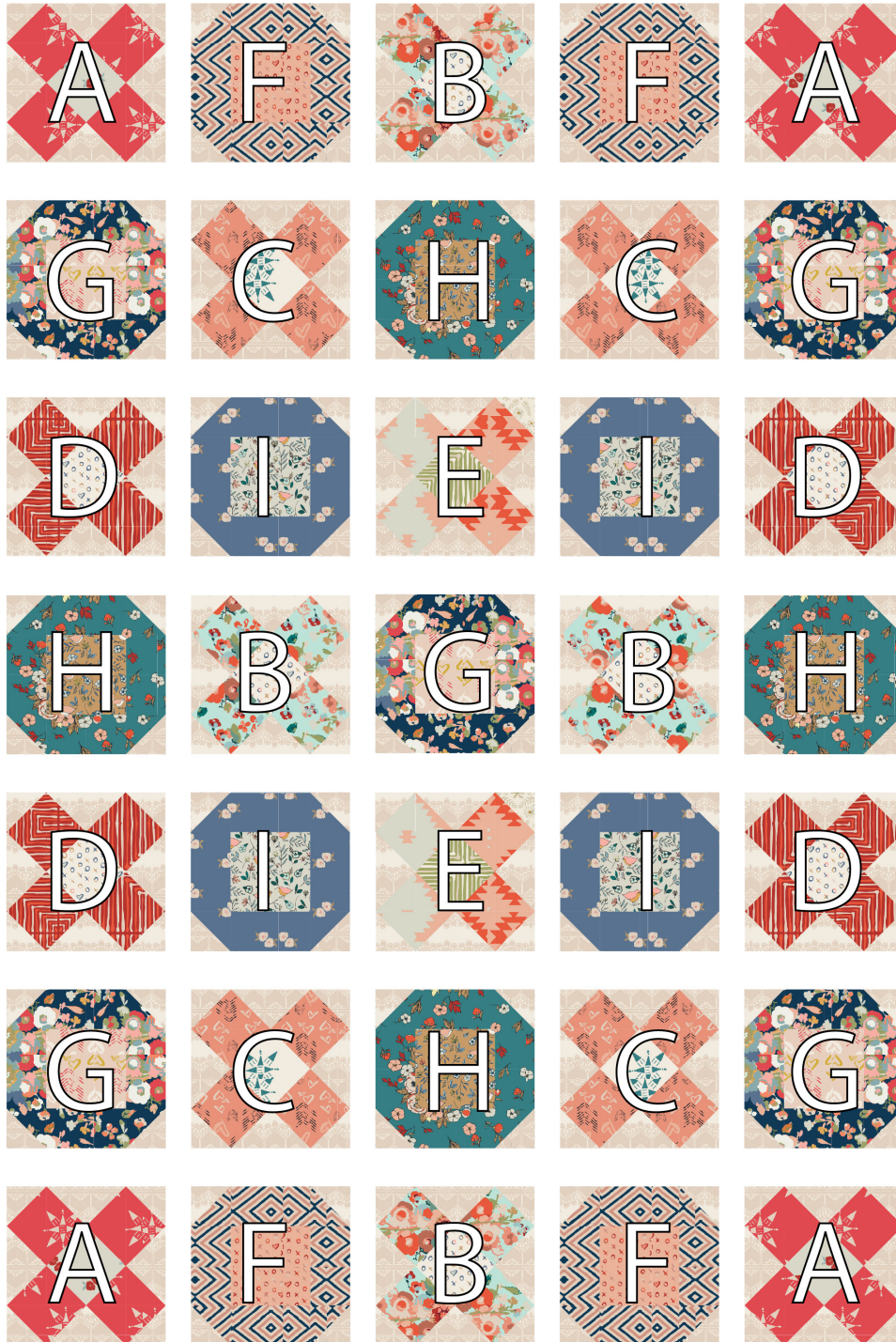


DIAGRAM 11

QUILT ASSEMBLY

Sew rights sides together.

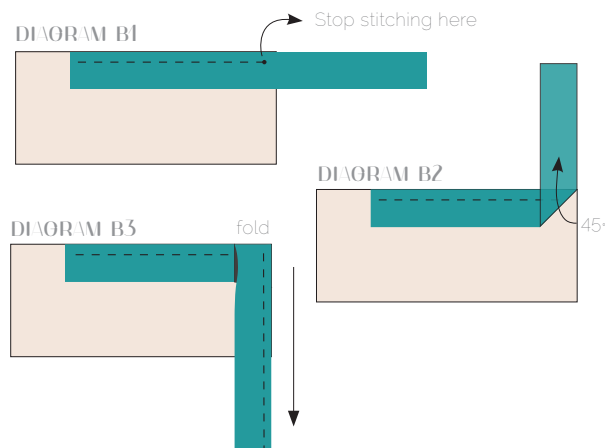
- © Place BACKING FABRIC on a large surface wrong side up. Stretch it with masking tape against that surface.
- © Place BATTING on top of backing fabric.
- © Place TOP on top of the batting with right side facing up. Smooth away wrinkles using your hands.
- © Pin all layers together and baste with basting thread, using long stitches. You can also use safety pins to join the layers.
- © Machine or hand quilt starting at the center and working towards the corners. Remember that quilting motifs are a matter of personal preference. Have fun choosing yours!
- © After you finished, trim excess of any fabric or batting, squaring the quilt to proceed to bind it.

BINDING

Sew rights sides together.

- © Cut enough strips $1\frac{1}{2}$ " wide by the width of the fabric **C** to make a final strip 298" long. Start sewing the binding strip in the middle of one of the sides of the quilt, placing the strip right side down and leaving an approximated 5" tail. Sew with $\frac{1}{4}$ " seam allowance (using straight stitch), aligning the strip's raw edge with the quilt top's raw edge.
- © Stop stitching $\frac{1}{4}$ " before the edge of the quilt (**DIAGRAM B1**). Clip the threads. Remove the quilt from under the machine presser foot. Fold the strip in a motion of 45° and upward, pressing with your fingers (**DIAGRAM B2**). Hold this fold with your finger, bring the strip down in line with the next edge, making a horizontal fold that aligns with the top edge of the quilt (**DIAGRAM B3**). Start sewing at $\frac{1}{4}$ " of the border, stitching all the layers. Do the same in the four corners of the quilt.

- © Stop stitching before you reach the last 5 or 6 inches. Cut the threads and remove the quilt from under the machine presser foot. Lay the loose ends of the binding flat along the quilt edge, folding the ends back on themselves where they meet. Press them together to form a crease. Using this crease as the stitching line, sew the two open ends of the binding with right sides together (you can help yourself marking with a pencil if the crease is difficult to see).
- © Trim seam to $\frac{1}{4}$ " and press open. Complete the sewing. Turn binding to back of the quilt, turn raw edge inside and stitch by hand using blind stitch.



artgalleryfabrics.com

NOTE: While all possible care has been taken to ensure the accuracy of this pattern, We are not responsible for printing errors or the way in which individual work varies. Please read instructions carefully before starting the construction of this quilt. If desired, wash and iron your fabrics before starting to cut.

©2016 Courtesy of Art Gallery Quilts LLC. All Rights Reserved.