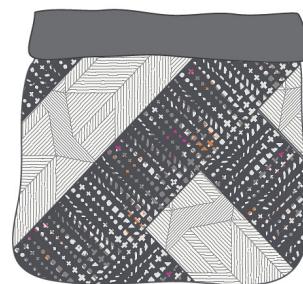


XXXXXX

A close-up photograph of a quilted clutch bag. The top flap is made of a smooth, tan-colored material, likely leather or faux leather. The main body of the bag is covered in a quilted fabric with a complex geometric pattern. The pattern consists of interlocking shapes, some filled with fine white lines on a dark background, and others with a dark background and small white dots. The quilting is done with a golden-brown thread, creating a series of diamond-shaped stitches across the entire surface. The bag is set against a dark, solid background.

XXXXXXXXXXXXXXXXXXXXXXXXXXXX

Subtle Journey

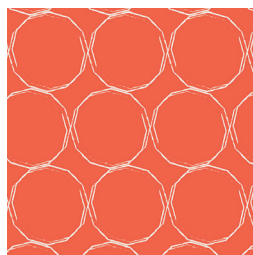


cityloft FUSION

FABRICS DESIGNED BY AGF STUDIO



FUS-CL-900
BRAVE BLOOMED CITY



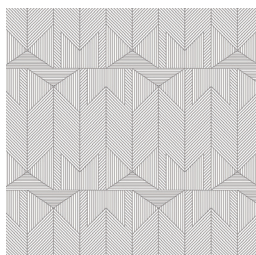
FUS-CL-901
HULA HOOPS CITY



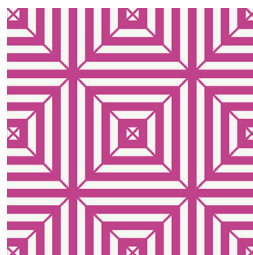
FUS-CL-902
WAVING BUDS CITY



FUS-CL-903
TUNER TUMBLE CITY



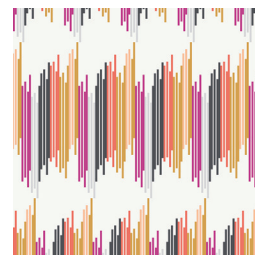
FUS-CL-904
SUBTLE JOURNEY CITY



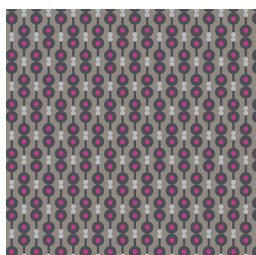
FUS-CL-905
OPTICAL CITY



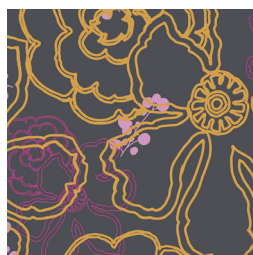
FUS-CL-906
FLUXUS CITY



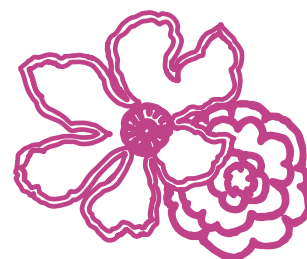
FUS-CL-907
TRÈS STREAKED CITY



FUS-CL-908
RETRO HARMONY CITY



FUS-CL-909
GRAPHIC BLOOMS CITY



FEEL THE DIFFERENCE © 2017 Courtesy of Art Gallery Quilts LLC. All Rights Reserved.

Subtle Journey

FINISHED SIZE | 10" x 6½"

FABRIC REQUIREMENTS

Fabric A	FUS-CL-g06	FQ
Fabric B	FUS-CL-g04	F8
Fabric C	PE-430	F8
Fabric D	Faux Leather	F8

LINING FABRIC

PE-430- Included

Additional Material

One (1) Magnetic snaps

CUTTING DIRECTIONS

¼" seam allowances are included.

Three (3) 2½" x 15½" rectangle from Fabric **A**

Four (4) 2½" x 8½" rectangle from Fabric **A**

Two (2) 2½" x 15½" rectangle from Fabric **B**

Three (3) 2½" x 8½" rectangle from Fabric **B**

One (3) 10½" x 7" rectangle from Fabric **D**

CONSTRUCTION

Sew all rights sides together with ¼" seam allowance.

- Take all three (3) 2 1/2" x 15 1/2" rectangles from Fabric A and the two (2) 2 1/2" x 15 1/2" rectangles from Fabric B and pair them as the following Diagram:

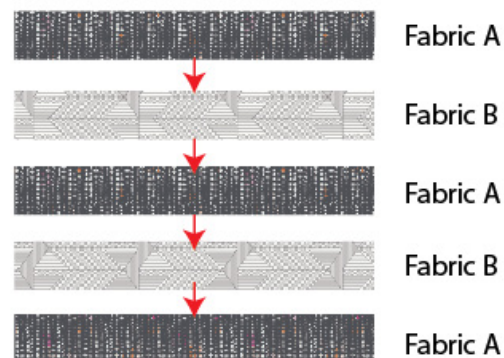


DIAGRAM 1

- Now, take all four (4) 2 1/2" x 8 1/2" rectangles from Fabric A and the three (3) 2 1/2" x 8 1/2" rectangles from Fabric B and pair them as the following diagram

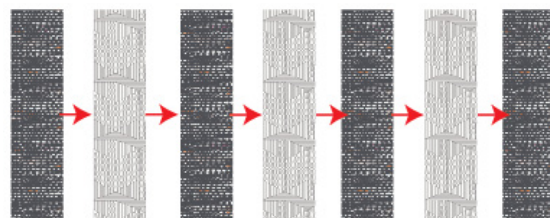


DIAGRAM 2

- Now, take both pieces and assembled them together as diagram below.
- Make sure you center the pieces

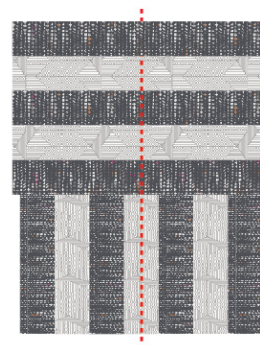


DIAGRAM 3

- Rotate the piece to a 45 degree and trim it to a 7 1/2" x 10 1/2" rectangle

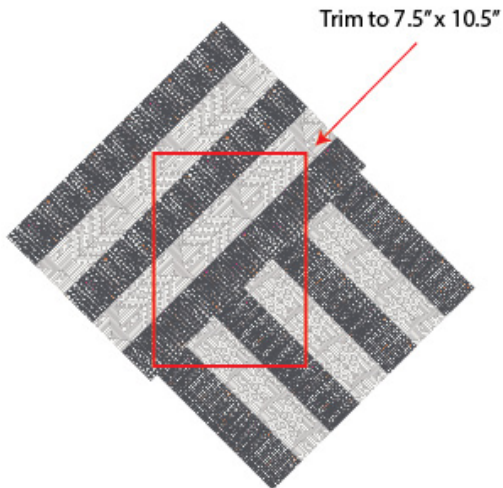


DIAGRAM 4

- Quilt as desired

Applying the Magnetic Snap

- **Note:** A magnetic snap has two main components, a male side & a female side. The magnetic snap also comes with a backing washer for each component. When you purchase a magnetic snap, you will receive 4 metal pieces in total.
- Find the midpoint of your back and front lining pieces and measure down 2' and place a small 1'x 2' piece of ultra firm stabilizer. Iron stabilizer into place. Mark the 2' mark on top of stabilizer.
- Place a washer on this mark. Mark with a pencil two lines, from top and bottom tracing inside the rectangles on the washer. (Diagram 5)

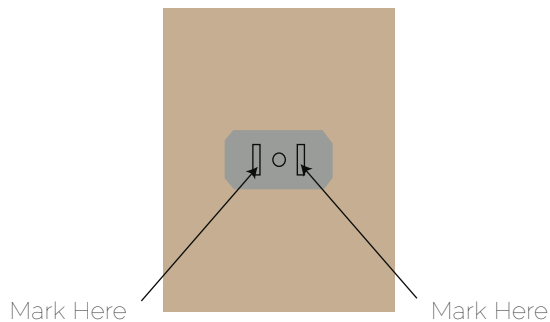


DIAGRAM 5



- Remove the washer and make two slits on those marks using a small pair of sharp scissors.
- Place the arms of the male magnet clasp through the slits from the right side of the strip.

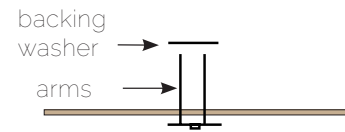


DIAGRAM 6

- Put the washer over the arms from the fusible side.
- Using pliers, fold each arm of the clasp out and down in opposite directions around the washer. Make the arms as flat as a possible.

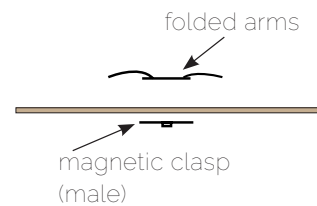


DIAGRAM 7

- To attach the female side of the magnetic snap repeat the same process following Diagram 5-7 with the female magnetic snap.
- Place exterior of bag inside lining making sure right sides are touching and that the straps are out of the way. Pin lining to the exterior of the bag and sew all the way around the top of your bag at 1/2" seam allowance.
- Pull exterior of bag through the unsewn portion in the lining.
- Handstitch or machine stitch unsewn portion.
- Place lining on the inside of your bag and topstitch the top of your bag at 1/4". Attach your strap to the circle rings and your bag is complete!



FEEL THE DIFFERENCE

artgalleryfabrics.com

NOTE: While all possible care has been taken to ensure the accuracy of this pattern, We are not responsible for printing errors or the way in which individual work varies. Please read instructions carefully before starting the construction of this quilt. If desired, wash and iron your fabrics before starting to cut.

© 2017 Courtesy of Art Gallery Quilts LLC. All Rights Reserved.