

SERPENTINE POT HOLDERS



FUSIONS

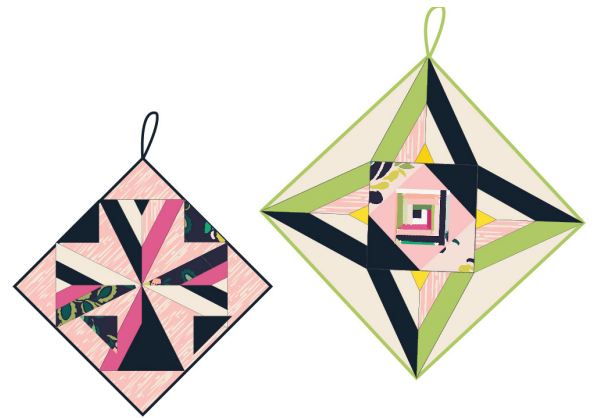
by AGF

FREE PATTERN

XXXXXXXXXXXXXXXXXXXXXXXXXXXX

SERPENTINE POT HOLDERS

PILLOW SET DESIGNED BY AGF STUDIO

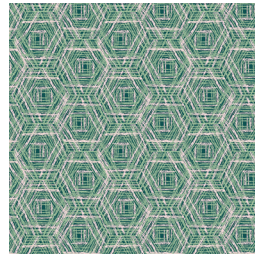


FLORALIA FUSION

FABRICS DESIGNED BY AGF STUDIO



FUS-F-1000
BRAVE BLOOMED CITY



FUS-F-1001
TRACERY FLORALIA



FUS-F-1002
FEMME METALE FLORALIA



FUS-F-1003
LINE DRAWINGS FLORALIA



FUS-F-1004
SPARKLER FLORALIA



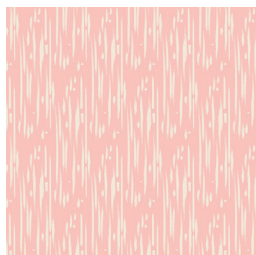
FUS-F-1005
ROADSIDE GUIDES FLORALIA



FUS-F-1006
BLOSSOM DRIFT FLORALIA



FUS-F-1007
WINGSPAN FLORALIA



FUS-F-1008
RETRO HARMONY CITY



FUS-F-1009
SPANISH PETALS FLORALIA



SERPENTINE POT HOLDERS

FINISHED SIZE | 9 x 9" & 12 ½ x 12 ½"

FABRIC REQUIREMENTS

Fabric A	PE-428	FE
Fabric B	FUS-F-1008	FE
Fabric C	FUS-F-1007	FE
Fabric D	PE-408	FE
Fabric E	PE-404	FE
Fabric F	FUS-F-1000	FE
Fabric G	PE-420	FE
Fabric H	PE-448	FE
Fabric I	PE-414	FE
Fabric J	FUS-F-1005	FE

BACKING FABRIC

Pot holder #1

Fabric **C** FUS-F-1007 FE

Pot Holder #2

Fabric **J** FUS-F-1005 FE

(Suggested)

BINDING FABRIC

Pot holder # 1

Fabric **A** FUS-F-1007

Pot holder # 2

Fabric **I** PE-414

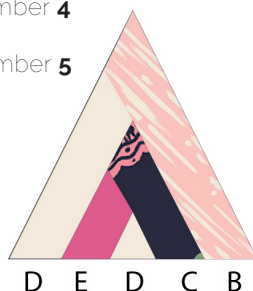
(suggested)

CUTTING DIRECTIONS

¼" seam allowances are included.

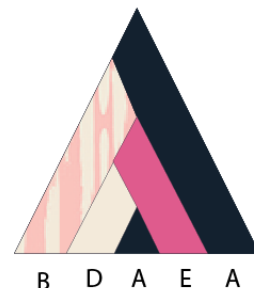
• Combination A

- Two (2) 1 ½" square fabric **D** for number **1**
- Two (2) 2 ½" square fabric **E** for number **2**
- Two (2) 3 ½" square from fabric **C** for number **3**
- Two (2) 5 x 2" strips of fabric **D** for number **4**
- Two (2) 6 x 3" strips of fabric **B** for number **5**



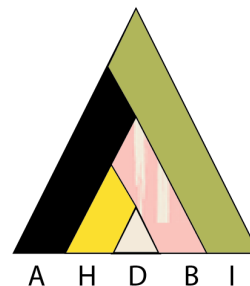
• Combination B

- Two (2) 1 ½" square fabric **A** for number **1**
- Two (2) 2 ½" square fabric **D** for number **2**
- Two (2) 3 ½" square from fabric **E** for number **3**
- Two (2) 5 x 2" strips of fabric **B** for number **4**
- Two (2) 6 x 3" strips of fabric **A** for number **5**



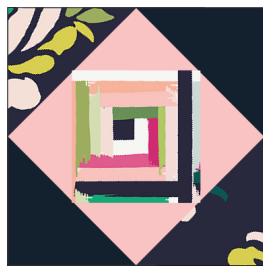
• Combination C

- Two (2) 1 ½" square fabric **D** for number **1**
- Two (2) 2 ½" square fabric **H** for number **2**
- Two (2) 3 ½" square from fabric **B** for number **3**
- Two (2) 5 x 2" strips of fabric **A** for number **4**
- Two (2) 6 x 3" strips of fabric **I** for number **5**



• Combination D

- One (1) 4" square (fuzzy cut your fabric so you get fabric **J** square centered) fabric **J** for number **1**.
- Four (4) 3" squares from fabric **G** for numbers **2,3,4, and 5**.
- Two (2) 3 x 4 ½" strips from fabric **F** for numbers **6 and 8**.
- Two (2) 3 x 4 ½" strips from fabric **A** for numbers **7 and 9**

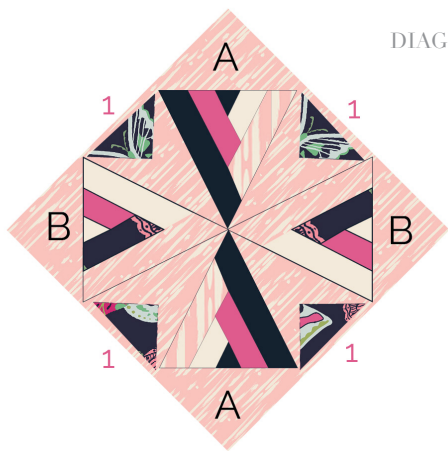


- Cut four (4) template 1 from fabric C
- Cut one (1) 12 ½" square from fabric D
- Cut one (1) 9" square from fabric B

CONSTRUCTION

Sew all rights sides together with ¼" seam allowance.

- Use the paper piecing templates found at the end of these instructions to sew the star triangles.
- If you are new to paper piecing check out this video tutorial on how to paper piece:
- <http://www.agfblog.com/2017/08/paper-piecing-tips-how-to-make-a-crossed-canoes-block-.html>
- Potholder #
- Repeat combinations **A** and **B** two times
- Use template **1** triangles.
- Once you are done with combinations **A** and **B** paper piecing use Steam-A-Seam fabric tape to place them on top of fabric **B** 9" square. Do the same with template **1** triangles. Follow the diagram below for placement and attachment.



- Once your templates are properly placed stitch them at the edges on top of fabric **B** square and your potholder front should be ready!



- Proceed with potholder #2
- Use paper piecing combinations **C & D**
- Repeat combination **C** four (4) times.
- Once you are done with combination **C & D** paper piecing use Steam-A-Seam fabric tape to place them on top of fabric **D** 12½" square. Do the same with template **1** triangles. Follow the diagram below for placement and attachment.

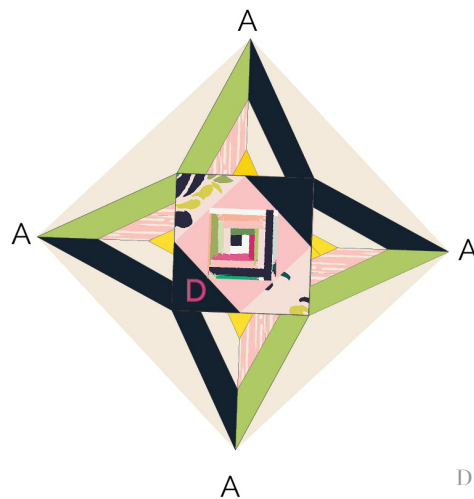


DIAGRAM 4

- Once your templates are properly placed stitch them at the edges on top of fabric **B** square and your potholder # 2 front should be ready!

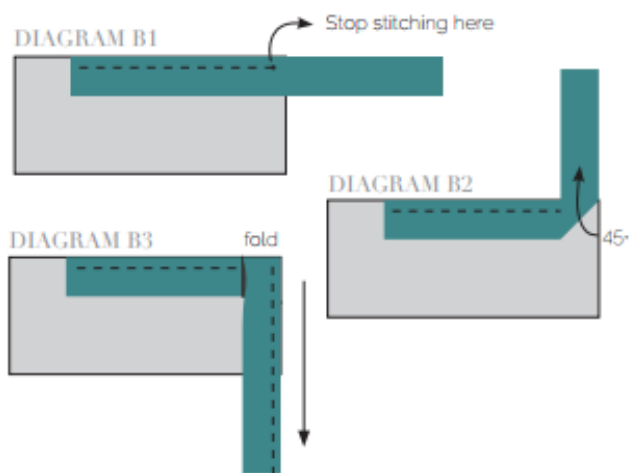
QUILT ASSEMBLY

Sew rights sides together.

- Place **BACKING FABRIC** on a large surface wrong-side up. Stretch it with masking tape against that surface.
- Place **BATTING** on top of backing fabric.
- Place **TOP** on top of the batting with right side facing up. Smooth away wrinkles using your hands.
- Pin all layers together and baste with basting thread, using long stitches. You can also use safety pins to join the layers. Machine or hand quilt starting at the center and working towards the corners. Remember that quilting motifs are a matter of personal preference. Have fun choosing yours!

BINDING

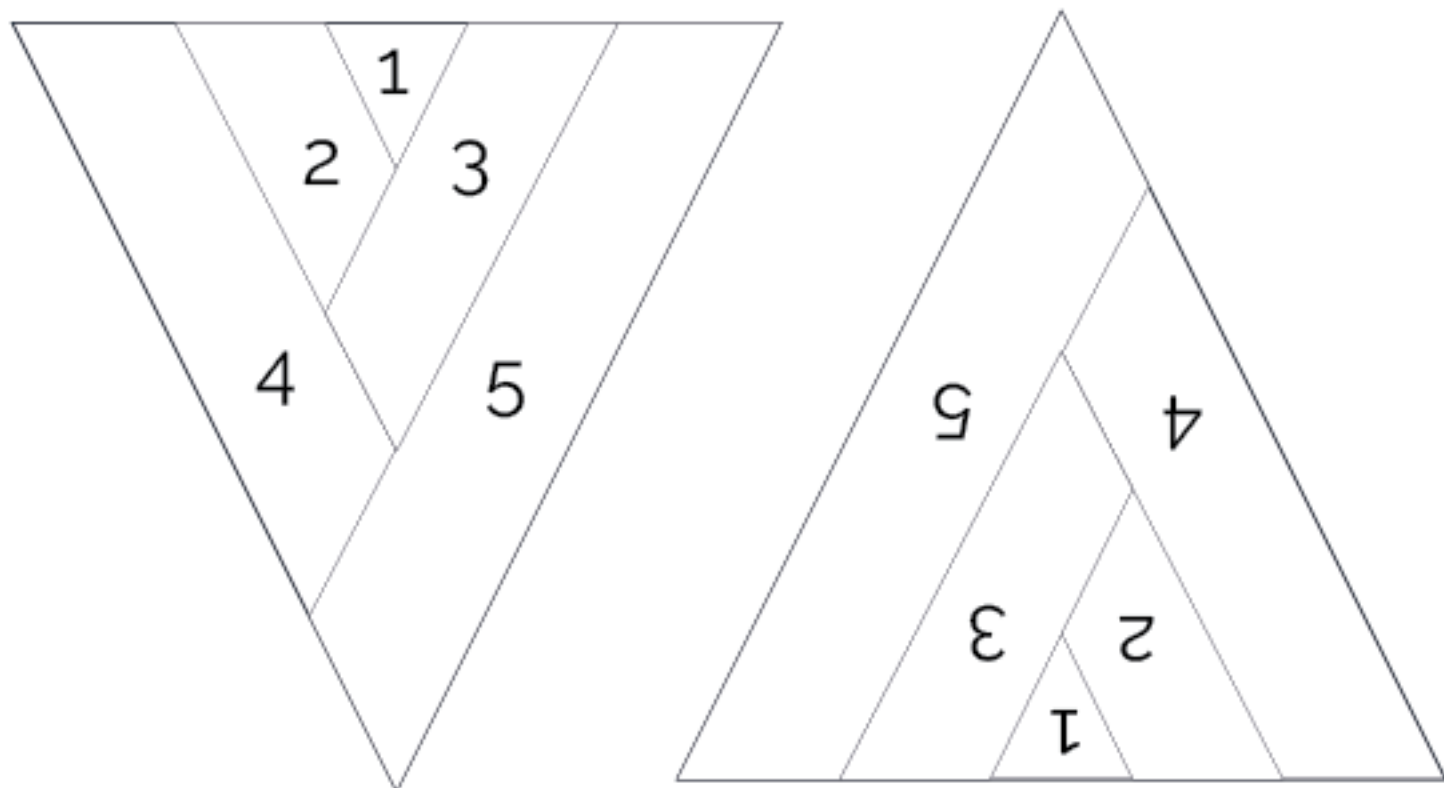
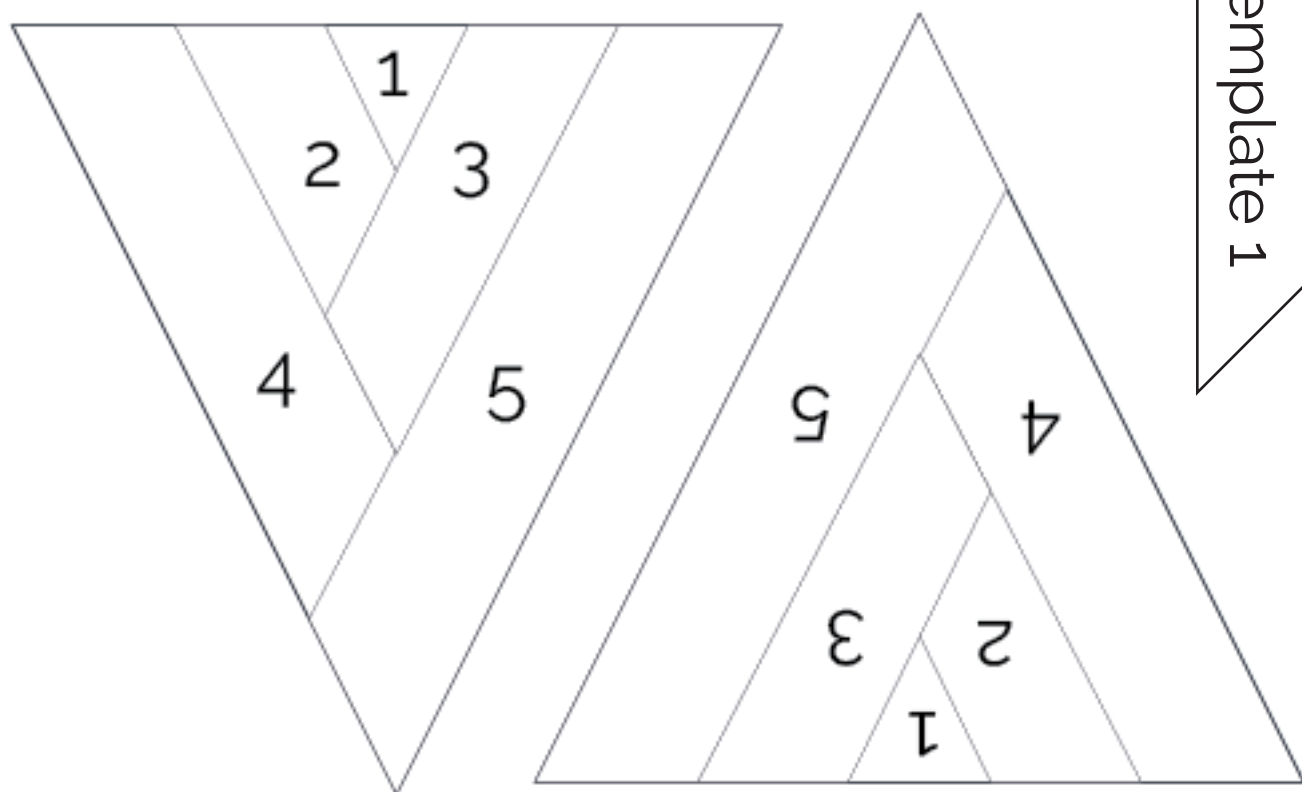
- Pot holder # 1:
- Cut 2 strips from fabric **A & I** 1½' wide by the width of the fabric to make a final strip 46' (fabric **A** for pot holder #1) and a final strip of 58' (fabric **I** for pot holder #2) long. Start sewing the binding strip in the middle of one of the sides of the pot holder, placing the strip right side down and leaving an approximated 5' tail. Sew with ¼" seam allowance (using straight stitch), aligning the strip's raw edge with the quilt top's raw edge.
- Stop stitching ¼' before the edge of the quilt (DIAGRAM B 1). Clip the threads. Remove the quilt from under the machine presser foot. Fold the strip in a motion of 45° and upward, pressing with your fingers (DIAGRAM B2). Hold this fold with your finger, bring the strip down in line with the next edge, making a horizontal fold that aligns with the top edge of the quilt (DIAGRAM B3). Start sewing at ¼' of the border, stitching all the layers. Do the same in the four corners of the pot holder.
- Stop stitching before you reach the last 5 or 6 inches. Cut the threads and remove the quilt from under the machine presser foot. Lay the loose ends of the binding flat along the quilt edge, folding the ends back on themselves where they meet. Press them together to form a crease. Using this crease as the stitching line, sew the two open ends of the binding with right sides together (you can help yourself marking with a pencil if the crease is difficult to see).
- Trim seam to ¼' and press open. Complete the sewing. Turn binding to back of the quilt, turn raw edge inside and stitch by hand using blind stitch.

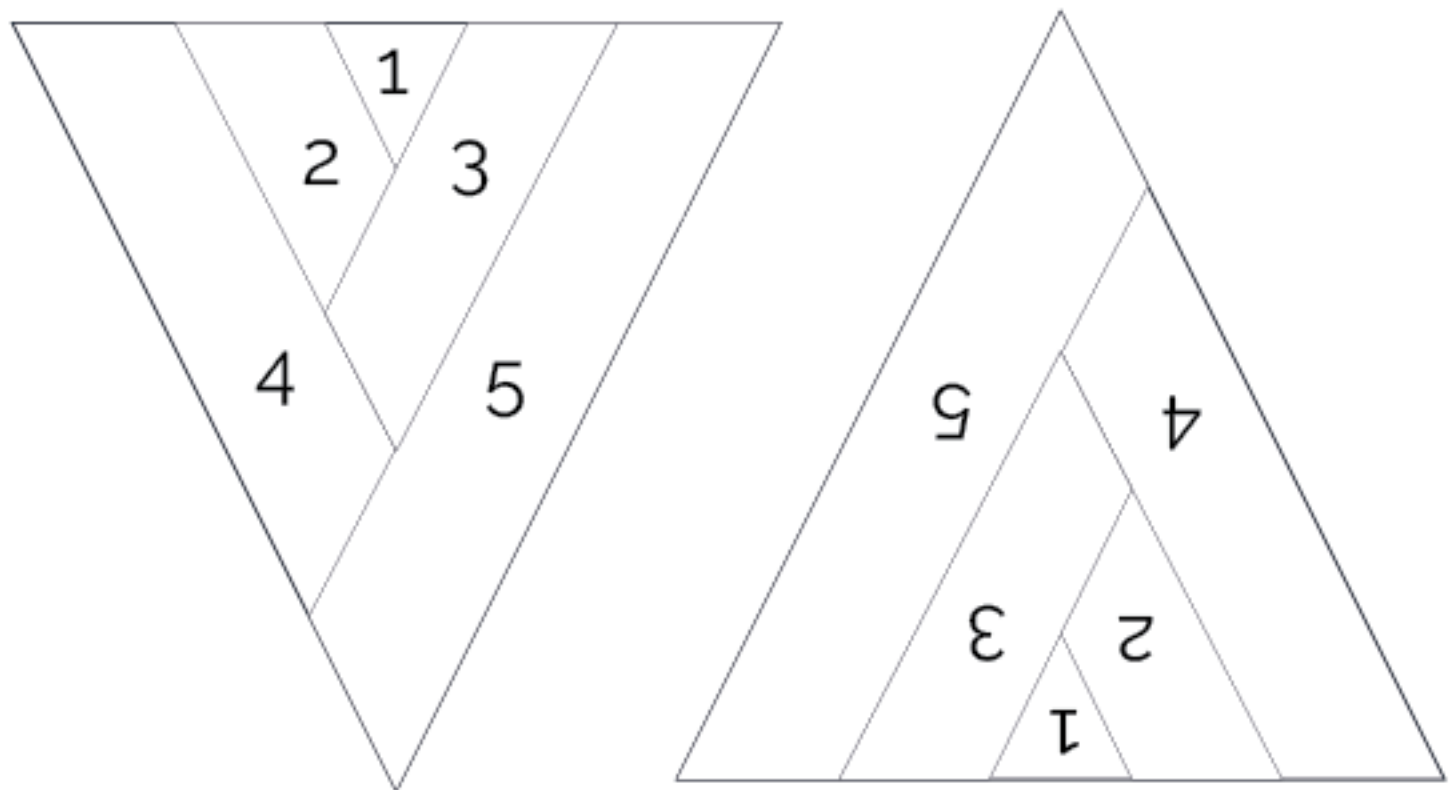
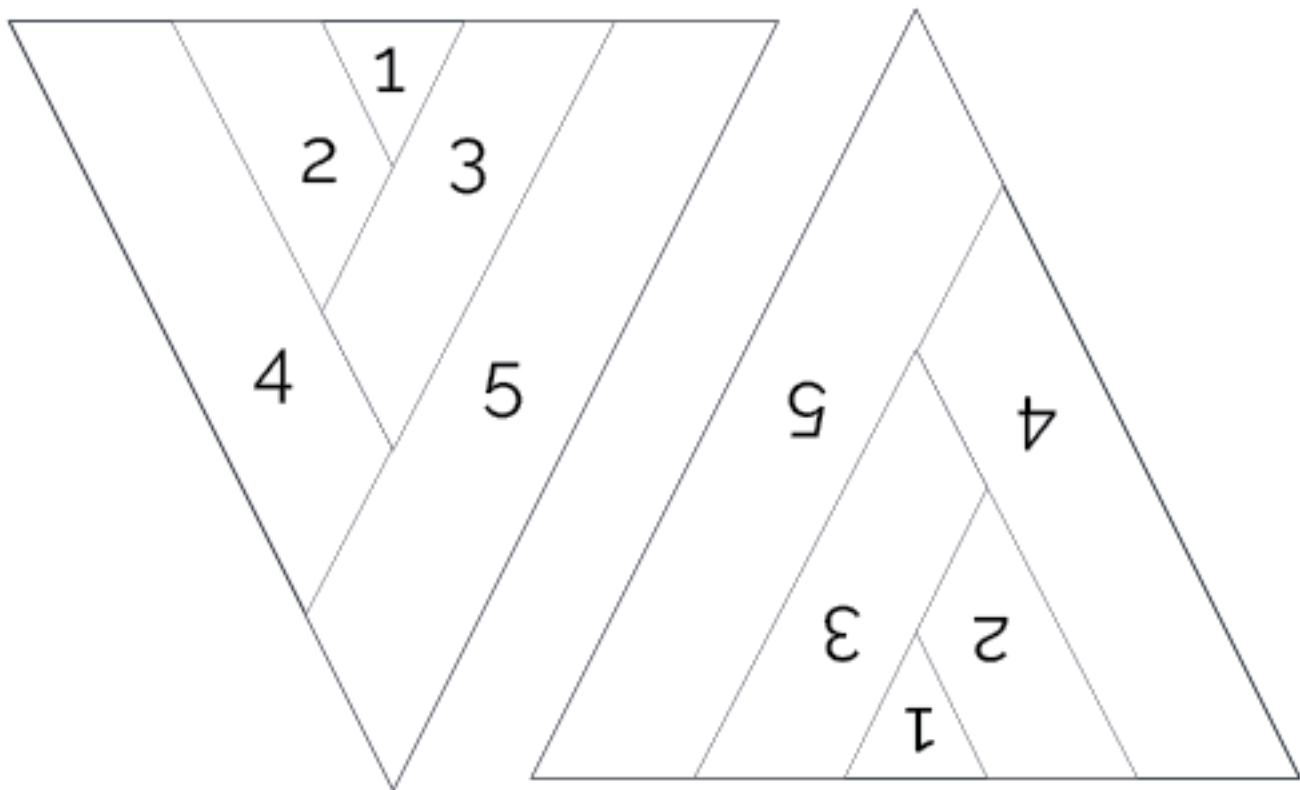


artgalleryfabrics.com

NOTE: While all possible care has been taken to ensure the accuracy of this pattern, We are not responsible for printing errors or the way in which individual work varies. Please read instructions carefully before starting the construction of this quilt. If desired, wash and iron your fabrics before starting to cut.

template 1





• Combination D

