

XXXXXX

A vibrant, multi-colored tote bag with a geometric pattern of squares and diamonds in shades of green, pink, and black. The bag features a large, light-colored floral applique on the front. It has a dark, wide handle and is shown against a dark background with red flowers and greenery.



XXXXXXXXXXXXXXXXXXXXXXXXXXXX

Roadside

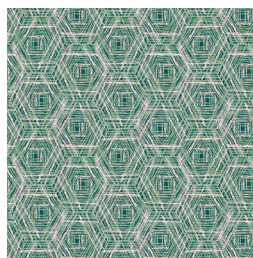


FLORALIA FUSION

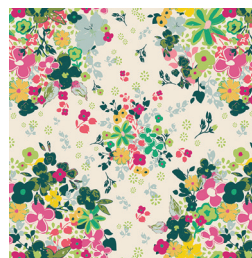
FABRICS DESIGNED BY AGF STUDIO



FUS-F-1000
BRAVE BLOOMED CITY



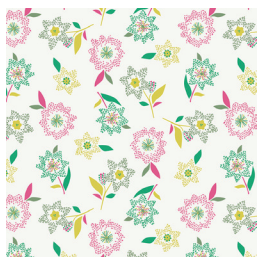
FUS-F-1001
TRACERY FLORALIA



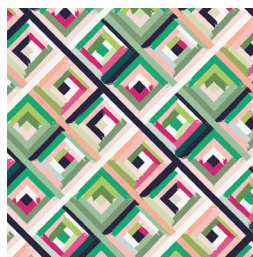
FUS-F-1002
FEMME METALE FLORALIA



FUS-F-1003
LINE DRAWINGS FLORALIA



FUS-F-1004
SPARKLER FLORALIA



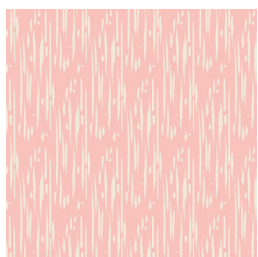
FUS-F-1005
ROADSIDE GUIDES FLORALIA



FUS-F-1006
BLOSSOM DRIFT FLORALIA



FUS-F-1007
WINGSPAN FLORALIA



FUS-F-1008
RETRO HARMONY CITY



FUS-F-1009
SPANISH PETALS FLORALIA



FEEL THE DIFFERENCE © 2017 Courtesy of Art Gallery Quilts LLC. All Rights Reserved.



FINISHED SIZE | 17" x 11" x 5½"

FABRIC REQUIREMENTS

| | | |
|-----------------|------------|-------|
| Fabric A | FUS-F-1005 | ¾ yd |
| Fabric B | FUS-F-1008 | ⅛ yd |
| Fabric C | FUS-F-1001 | 1⅙ yd |
| Fabric D | FUS-F-1004 | ¼ yd |
| Fabric E | DEN-S-2008 | ¼ yd |
| Fabric F | PE-420 | ⅞ yd |
| Fabric G | PE-428 | F8 |

Additional Material

Steam-a-seam double side fusible tape

Magnetic snaps

CUTTING DIRECTIONS

¼" seam allowances are included.

- Four (4) 2½" x 13" strips from fabric **A**.
- Two (2) 6" x 10" rectangles from Fabric **A**.
- One (1) 6" x 17½" rectangle from fabric **A**.
- Six (6) 1½" x 13" strips from Fabric **B**.
- Four (4) 2½" x 13" strips from fabric **C**.
- Two (2) 4" perfect square from fabric **D**.
- One (1) 5" x 10" rectangle from fabric **D**.
- Twelve (12) 1½" x 13" strips from Fabric **E**.
- One (1) 17½" x 7½" rectangle from fabric **F**.
- One (1) Flower Pattern from fabric **G**.
- Two (2) of Template 1 from Fabric **F**.
- Two (2) 6" x 10" rectangles from fabric **F**.
- One (1) 6" x 17½" rectangle from fabric **F**.
- Two (2) 3" x 20" strips from Fabric **E** (handles)
- One (1) 1½" x WOF strip from Fabric **A** (Binding)

CONSTRUCTION

Sew all rights sides together with ¼" seam allowance.

- Join the 2½" x 13" strips from Fabric **A** with the 1½" x 13" strips from Fabric **B** and **E** as diagram below:



DIAGRAM 1

- Repeat the same process for the back side of the bag by joining the 2½" x 13" strips from Fabric **C** with the 1½" x 13" strips from Fabric **B** and **E** as diagram below:

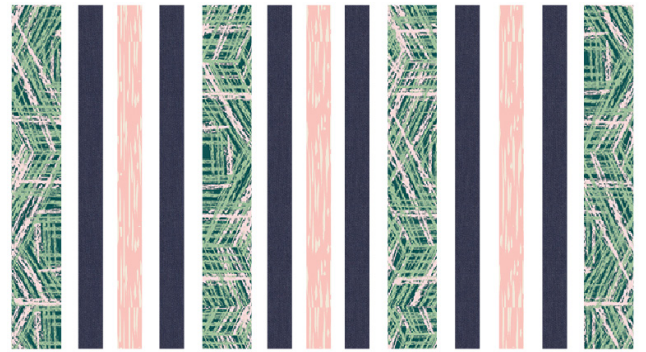


DIAGRAM 2

- Quilt both pieces as desired

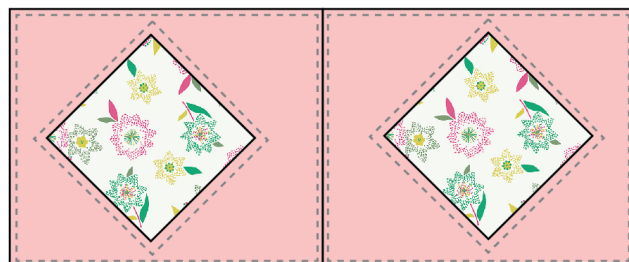
- Now, take the front part of the bag and start placing your flower pieces (having already places the double side fusible tape) as Diagram below.
- Top stitch each flower piece



- Take both sides of your bag and trim it by using your Pattern 1 as your guide.



- For the back part of the piece, take two (2) 4" perfect squares from Fabric D and place them on the 17½" x 7½ rectangle from Fabric F.
- Fold the edges of the perfect square and top stitch with your desired color thread.
- Quilt the rectangle piece as desired



- Now, place the rectangle piece on the bottom of your back part of the bag.
- Top stitch right on the middle in order to create your pockets



- Pair your two (2) 6" x 10" rectangles from Fabric **A**, and your 6" x 17½" rectangle from fabric **A**. This will be your side panels and bottom



- Now, take the strip and pin it around the edge of the Front Side of the bag, right sides together.
- Sew.
- Then, take the back side of the bag and pin it with the other edge piece, right sides together.

Drop-in Pocket

- Take the 5" x 10" Fabric **D** piece and place it on top of one piece of your lining fabric.
- Take the edges of Fabric **D** and fold them in and stitch right on the edge leaving the top part unsewn.
- Stitch on the middle or more to your right or left in order to create your drop-in pockets.

Applying the Magnetic Snap

- **Note:** A magnetic snap has two main components, a male side & a female side. The magnetic snap also comes with a backing washer for each component. When you purchase a magnetic snap, you will receive 4 metal pieces in total.
- Find the midpoint of your back and front lining pieces and measure down 2" and place a small 1"x 2" piece of ultra firm stabilizer. Iron stabilizer into place. Mark the 2" mark on top of stabilizer.
- Place a washer on this mark. Mark with a pencil two lines, from top and bottom tracing inside the rectangles on the washer. (Diagram 8)

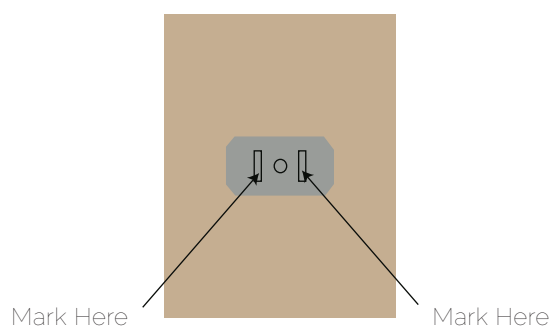
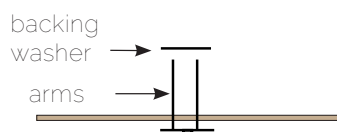


DIAGRAM 8

- Remove the washer and make two slits on those marks using a small pair of sharp scissors.
- Place the arms of the male magnet clasp through the slits from the right side of the strip.



- Put the washer over the arms from the fusible side.
- Using pliers, fold each arm of the clasp out and down in opposite directions around the washer. Make the arms as flat as a possible.

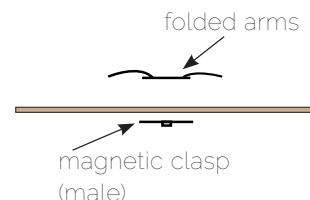


DIAGRAM 9

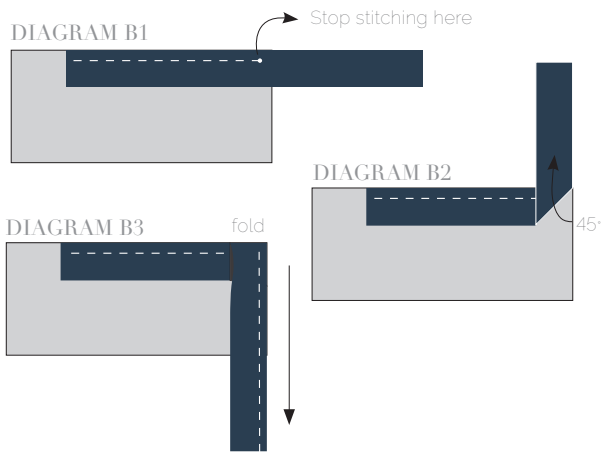
- To attach the female side of the magnetic snap repeat the same process following Diagram 6-8 with the female magnetic snap.
- Place exterior of bag inside lining making sure right sides are touching and that the straps are out of the way. Pin lining to the exterior of the bag and sew all the way around the top of your bag at 1/2" seam allowance.
- Pull exterior of bag through the unsewn portion in the lining.
- Handstitch or machine stitch unsewn portion.

BINDING

Sew rights sides together.

- Cut enough strips 1 1/2" wide by the width of the fabric **A** to make a final strip 55" long. Start sewing the binding strip in the middle of one of the sides of the quilt, placing the strip right side down and leaving an approximated 5" tail. Sew with 1/4" seam allowance (using straight stitch), aligning the strip's raw edge with the bag top's raw edge.
- Stop stitching 1/4" before the edge of the bag (**DIAGRAM B 1**). Clip the threads. Remove the bag from under the machine presser foot. Fold the strip in a motion of 45° and upward, pressing with your fingers (**DIAGRAM B2**). Hold this fold with your finger, bring the strip down in line with the next edge, making a horizontal fold that aligns with the top edge of the bag (**DIAGRAM B3**). Start sewing at 1/4" of the border, stitching all the layers.

- Stop stitching before you reach the last 5 or 6 inches. Cut the threads and remove the quilt from under the machine presser foot. Lay the loose ends of the binding flat along the quilt edge, folding the ends back on themselves where they meet. Press them together to form a crease. Using this crease as the stitching line, sew the two open ends of the binding with right sides together (you can help yourself marking with a pencil if the crease is difficult to see).
- Trim seam to $\frac{1}{4}$ " and press open. Complete the sewing. Turn binding to back of the bag, turn raw edge inside and stitch by hand using blind stitch.



- Attach your strap on the top part and your bag is complete!

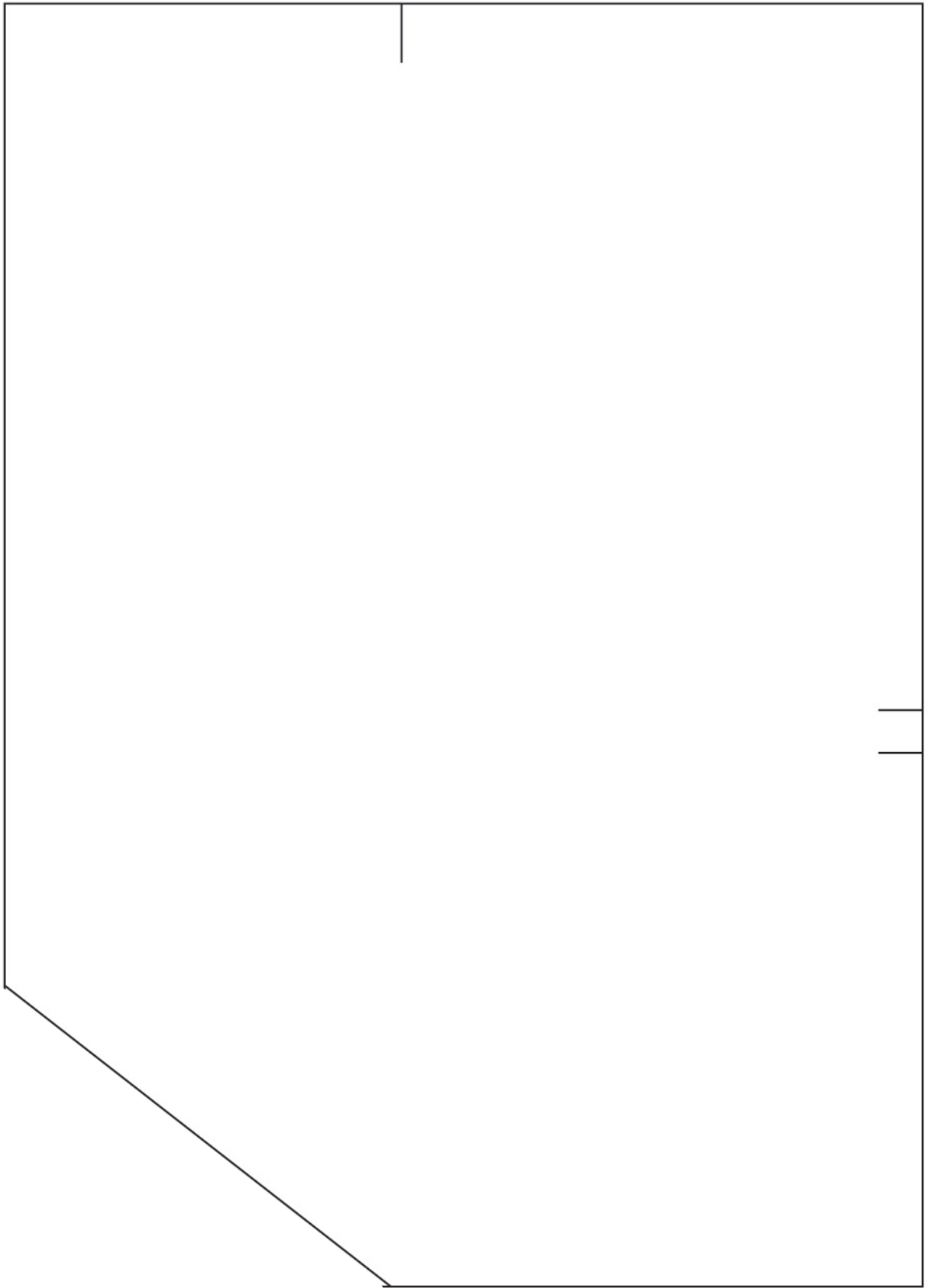


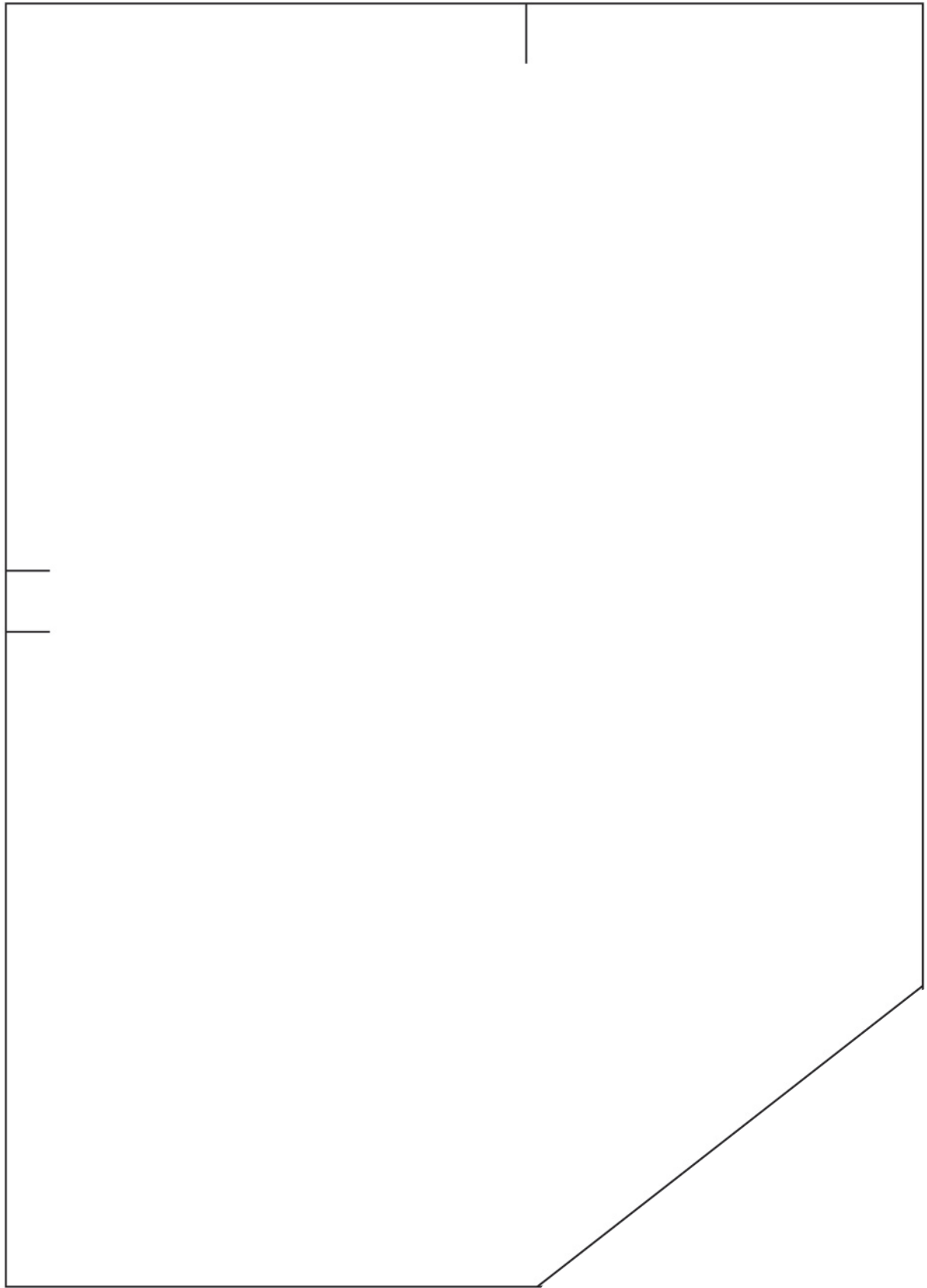
artgalleryfabrics.com

NOTE: While all possible care has been taken to ensure the accuracy of this pattern, We are not responsible for printing errors or the way in which individual work varies.

Please read instructions carefully before starting the construction of this quilt. If desired, wash and iron your fabrics before starting to cut.

© 2017 Courtesy of Art Gallery Quilts LLC. All Rights Reserved.









=

XXXXXXXXXXXXXXXXXXXXXXXXXXXXXXXXXXXX

