



XXXXXXXXXXXXXXXXXXXXXXXXXXXX

ANGLES

A DIVISION OF AGF

Prairie Garden



FABRICS DESIGNED BY AMY SINIBALDI

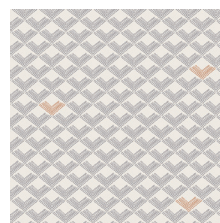
PLAY DATE



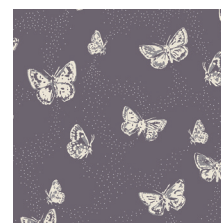
DHS-1080
TIPTOE FROLIC



DHS-1081
WALTZ MOONLIT



DHS-1082
ROOFTILES SLATE



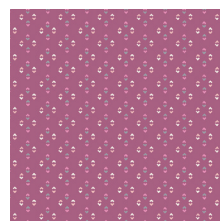
DHS-1083
FLUTTERDUST STARRY



DHS-1084
JOLIE PETAL



DHS-1085
MEADOW FIELD



DHS-1086
LUCY MAUVE



DHS-1087
PRAIRIE DOT FRESH

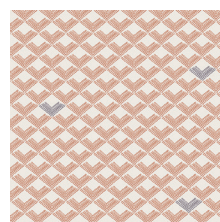
TEA TIME



DHS-2080
TIPTOE DUSK



DHS-2081
WALTZ SUNLIT



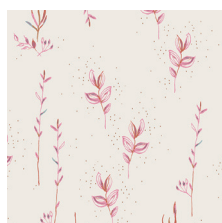
DHS-2082
ROOFTILES CLAY



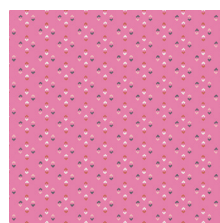
DHS-2083
FLUTTERDUST HAZE



DHS-2084
JOLIE FRESH



DHS-2085
MEADOW POSY



DHS-2086
LUCY ROSE



DHS-2087
PRAIRIE DOT SERENE



FEEL THE DIFFERENCE © 2016 Courtesy of Art Gallery Quilts LLC. All Rights Reserved.

Prairie Garden

FINISHED SIZE | 10" x 10"

FABRIC REQUIREMENTS

Fabric A	DHS-1087	F8
Fabric B	DHS-2081	F8
Fabric C	PE-408	F8
Fabric D	DHS-1086	F8
Fabric E	DHS-1080	F8
Fabric F	PE-425	F8
Fabric G	DHS-2082	F8
Fabric H	DHS-2083	F8
Fabric I	PE-460	F8
Fabric J	DHS-1083	F8
Fabric K	DHS-1081	F8

CUTTING DIRECTIONS

*1/4" seam allowances are included.
WOF means width of fabric.*

- Four (4) 3" x 3" squares from Fabric **A, B, C**
- Two (2) 3 3/8" x 3 3/8" squares from Fabric **A, C**

CONSTRUCTION

Sew all rights sides together with 1/4" seam allowance.

- Start by pairing all the HST:
- Pair a 3 3/8" perfect square from Fabric **A** with an 3 3/8" perfect square from Fabric **C**
- Draw a diagonal line on the wrong side of each pair
- Sew a 1/4" seam on either side of the drawing line
- Cut directly on the drawn line

- Repeat the same process so you have a total of 4 HST with Fabric **A-C**

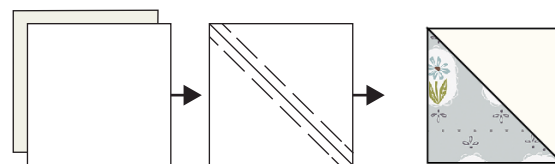


DIAGRAM 1

- Follow diagram below for each 3" perfect square fabrics and the HST assembly

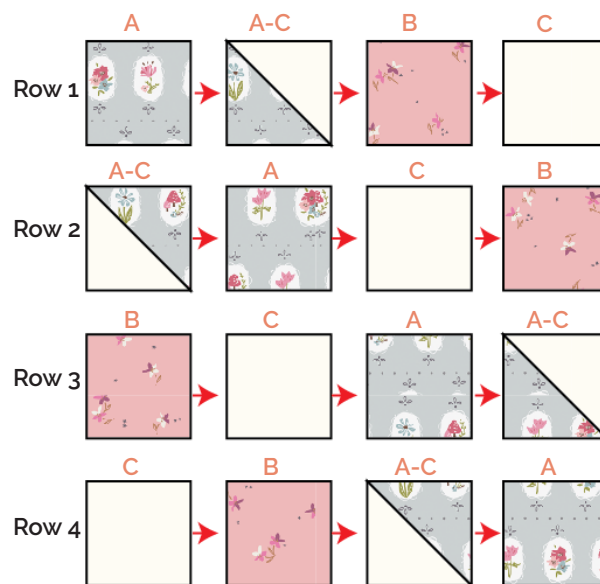


DIAGRAM 2

- Follow diagram below for each row assembly

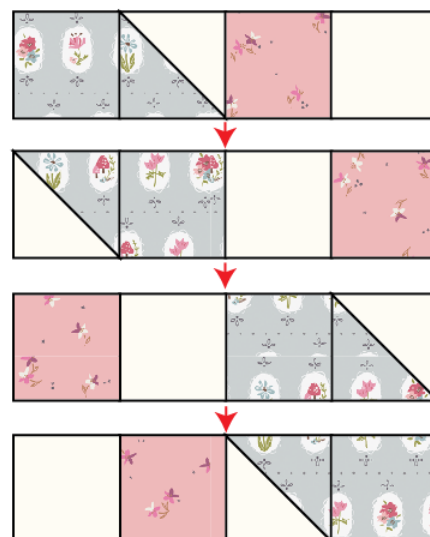


DIAGRAM 3

- Once you have your block complete, quilt a desired



- If you want to create the other blocks, just follow the same instructions from this block



artgalleryfabrics.com

NOTE: While all possible care has been taken to ensure the accuracy of this pattern, We are not responsible for printing errors or the way in which individual work varies. Please read instructions carefully before starting the construction of this quilt. If desired, wash and iron your fabrics before starting to cut.

© 2017 Courtesy of Art Gallery Quilts LLC. All Rights Reserved.