

Blossoms



FREE PATTERN

XXXXXXXXXXXXXXXXXXXXXXXXXXXXXXXXXXXX

Blossoms

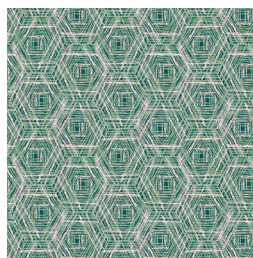


FLORALIA FUSION

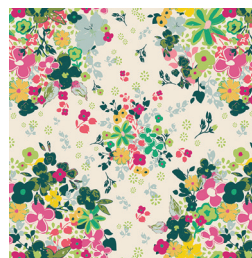
FABRICS DESIGNED BY AGF STUDIO



FUS-F-1000
BRAVE BLOOMED CITY



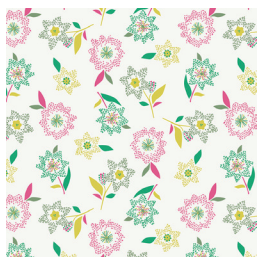
FUS-F-1001
TRACERY FLORALIA



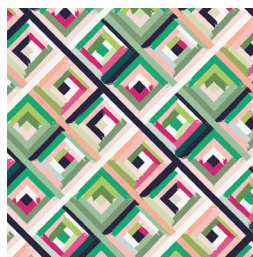
FUS-F-1002
FEMME METALE FLORALIA



FUS-F-1003
LINE DRAWINGS FLORALIA



FUS-F-1004
SPARKLER FLORALIA



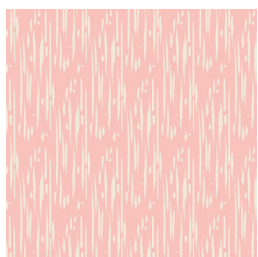
FUS-F-1005
ROADSIDE GUIDES FLORALIA



FUS-F-1006
BLOSSOM DRIFT FLORALIA



FUS-F-1007
WINGSPAN FLORALIA



FUS-F-1008
RETRO HARMONY CITY



FUS-F-1009
SPANISH PETALS FLORALIA



FEEL THE DIFFERENCE © 2017 Courtesy of Art Gallery Quilts LLC. All Rights Reserved.



FINISHED SIZE | 27½" x 17"

FABRIC REQUIREMENTS

Fabric A	FUS-F-1009	⅛ yd
Fabric B	FUS-F-1005	⅛ yd
Fabric C	FUS-F-1003	⅛ yd
Fabric D	PE-439	⅛ yd
Fabric E	PE-414	¼ yd
Fabric F	PE-448	⅛ yd
Fabric G	PE-428	1/6 yd
Fabric H	PE-408	1 1/6 yds

BACKING FABRIC

PE-408- Included

ADDITIONAL MATERIAL:

Lemon Chenille- It- Blooming Bias
Steam-a-Seam Double Stick Fusible Tape

CUTTING DIRECTIONS

¼" seam allowances are included.

- Two (2) of Flower Pattern 1 from fabric **A**.
- Two (2) of Flower Pattern 2 from fabric **B**.
- Two (2) of Flower Pattern 3 from fabric **B, D**.
- Two (2) of Flower Pattern 4 from fabric **C, F**.
- Two (2) of Branch Patterns from fabric **E**.
- Two (2) 28" x 6½" rectangles from fabric **H**.
- One (1) 28" x 4½" rectangle from fabric **G**.

CONSTRUCTION

Sew all rights sides together with ¼" seam allowance.

Start by pairing one (1) 28" x 6½" rectangle from Fabric **H** with one (1) 28" x 4½" rectangle from Fabric **G**, then another 28" x 6½" rectangle from Fabric **H**



DIAGRAM 1

In this pillow, we added Lemon Chenille-It Blooming Bias. This is optional.

In case you want to add the Chenille, stitch right on the center.

When you complete your pillow, wash it so the chenille frays.

Follow Diagram below for the flowers and branch placements.

Make sure you have each piece with the Steam-a-Seam fusible tape.



DIAGRAM 2

For better result, topstitch each piece with matching colors,

CREATING THE BACK PILLOW

Sew all rights sides together with 1/4" seam allowance. Press open.

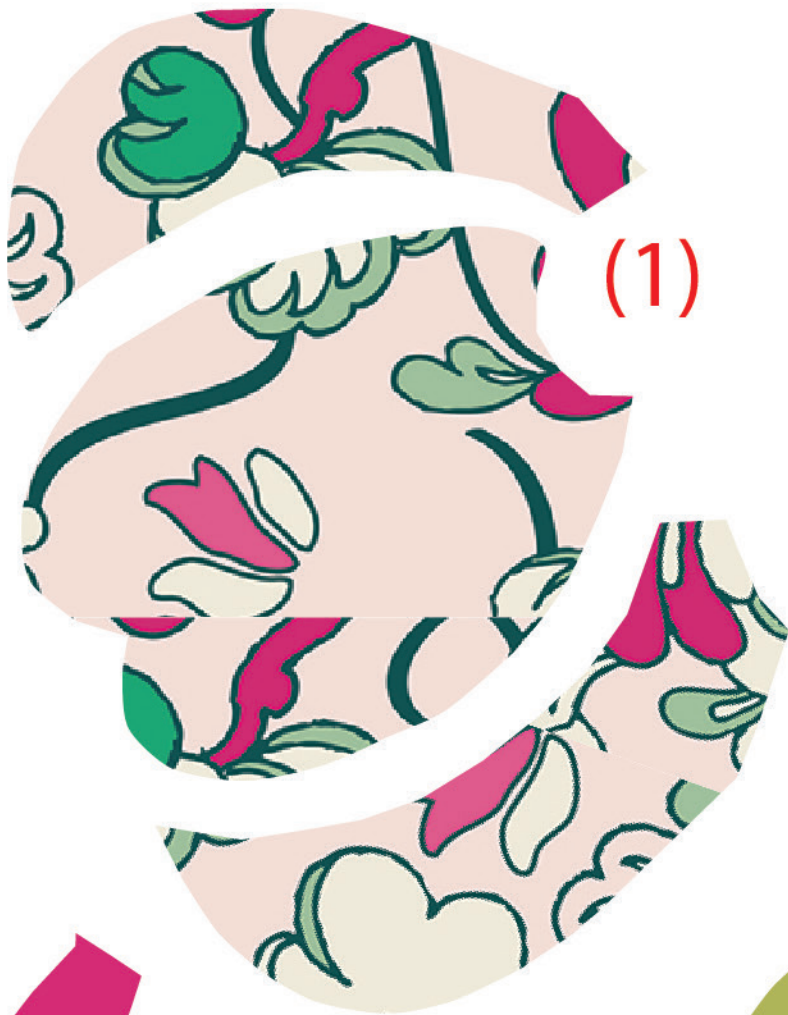
- To make a envelope back for your pillow take both 25" x 17½" rectangles and fold one 16" side on each rectangle in 1/2" and press and then fold another 1/2" and press.
- Top stitch as close to the edge as possible.
- Place rectangles right side together on top of each other to the front of your pillow and stitch all the way around your pillow at 1/4" seam allowance.
- Clip corners at seam allowance and flip piece to the right side of the fabric.
- Fill pillow with a 27½" x 17" pillow form and enjoy!

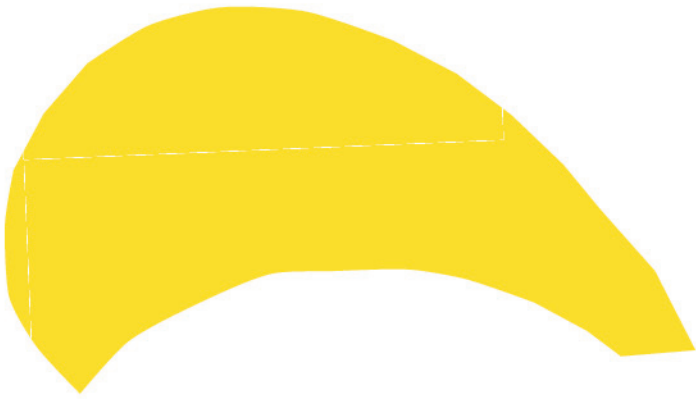


artgalleryfabrics.com

NOTE: While all possible care has been taken to ensure the accuracy of this pattern, We are not responsible for printing errors or the way in which individual work varies. Please read instructions carefully before starting the construction of this quilt. If desired, wash and iron your fabrics before starting to cut.

© 2017 Courtesy of Art Gallery Quilts LLC. All Rights Reserved.





(4)

