

A vibrant, handcrafted apron is displayed on a wooden surface. The apron features a dark blue central panel with a large, stylized face design in red, white, and green. This central panel is surrounded by a wide, multi-colored border with floral and geometric patterns. The apron is laid flat, and a yellow bowl and a small metal cup are placed on it. A long, thin, light-colored stick is positioned vertically to the right of the apron.



PILLOW DESIGNED BY AGF STUDIO

INDIEfolk

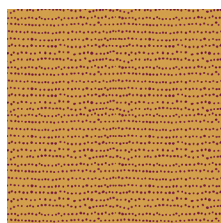
FABRICS DESIGNED BY PAT BRAVO



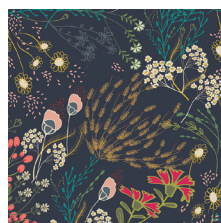
MEMORIES



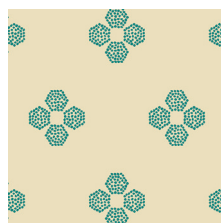
IFL-46300
KHOKHLOMA BURGUNDIA



IFL-46301
FLECKS AUBURN



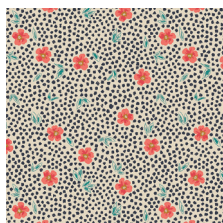
IFL-46302
MEADOW DIM



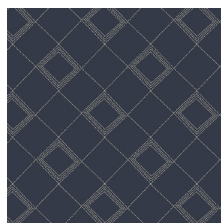
IFL-46303
DROPLET PETAL MALACHITE



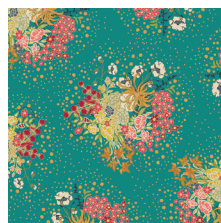
IFL-46304
TRINKET VIVID



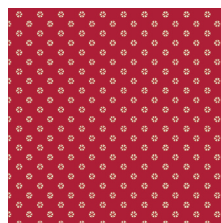
IFL-46305
MIST FLORA LUMINOUS



IFL-46307
TARTAN MIDNIGHT



IFL-46308
VERDANT BLOOM



IFL-46309
WHIRL ROUGE

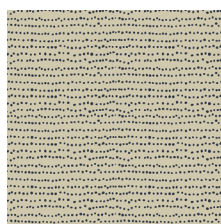


IFL-46310
TRŮJKAT SUNRISE

FABLES



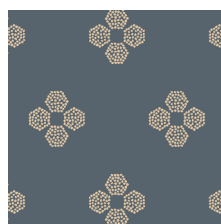
IFL-56300
KHOKHLOMA GLOOM



IFL-56301
FLECKS INDIGO



IFL-56302
MEADOW VIVID



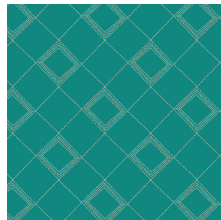
IFL-56303
DROPLET PETAL STORM



IFL-56304
TRINKET BLUSH



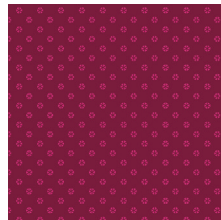
IFL-56306
PATHWAYS RICH



IFL-56307
TARTAN TEAL



IFL-56308
POWDER BLOOM



IFL-56309
WHIRL MAUVE



IFL-56310
TRŮJKAT DESERT



FEEL THE DIFFERENCE © 2015 Courtesy of Art Gallery Quilts LLC. All Rights Reserved.



FINISHED SIZE | 15 x 58

FABRIC REQUIREMENTS

Fabric A	PE-428	5/8' yd
Fabric B	IFL-56300	1/2' yd
Fabric C	IFL-46305	FE
Fabric D	PE-463	FE
Fabric E	PE-427	FE
Fabric F	PE-421	FE
Fabric G	IFL-46301	FE
Fabric H	PE-447	FE
Fabric I	IFL-56301	FE
Fabric J	IFL-46309	FE
Fabric K	IFL-46307	FE
Fabric L	PE-436	FE

BACKING FABRIC

Fabric **B** 7/8' yd approx. *(Suggested)*

CUTTING DIRECTIONS

*1/4" seam allowances are included.
WOF means width of fabric.*

Fabric **A**:

Cut two (2) 10 1/2" x 4 1/2" rectangles
Cut two (2) 10 1/2 x 2 1/2" rectangles
Cut one (4) 1 x WOF strips
Cut two (2) 28 1/2" x 2" strips.
Cut two (2) from template **6**.
Cut two (2) from template **8**.
Cut two (2) from template **14**.
Cut two (2) from template **16**.

Fabric **B**:

Cut four (4) 4 1/2" squares
Cut four (4) 4 1/2 x 3 1/2" squares
Cut two (2) 10 1/2" x 1 1/2" strips
Cut two (2) 15 1/2" x 1" strips
Cut two (2) 29 1/2" x 1 1/2" strips
Cut two (2) template **5**.
Cut two (2) template **7**.
Cut two (2) template **11**.
Cut two (2) template **12**.
Cut two (2) template **15**.
Cut two (2) template **16**.
Cut two (2) template **17**.

Fabric **C**:

Cut one (1) 5 x WOF strip.

Fabric **D**:

Cut one (1) 1 1/2" x WOF strip
Cut two (2) template **9**.
Cut two (2) template **10**.

Fabric **E**:

Cut one (1) 5 x 18" strip
Cut two (2) flower applique
Cut four (4) strips of 1 1/2" x 15 1/2"

Fabric **F**:

Cut one (1) 5 x 18" strip

Fabric **G**:

Cut two (2) 3 x 18" strips
Cut two (2) flower applique

Fabric **H**:

Cut two (2) steam and leaf applique

Fabric **I**:

Cut one (1) 1 1/2" x 18" strip.

Fabric **J**:

Cut two (2) flower applique.

Fabric **K**:

Cut four (4) 4 1/2" x 2 1/2" rectangles
Cut four (4) 4 1/2" x 1 1/2" rectangles
Cut one (1) 1 1/2" x 18" strips

Fabric **L**:

Cut (2) flower applique
Cut (2) petals

CONSTRUCTION

Sew all rights sides together with 1/4" seam allowance.

- Start with the center block of the table runner.
Join fabric **C** and **D** strips facing right side.
- Once you sew them together press and place them diagonally on top of fabric **A** 10 1/2" x 4 1/2" rectangle.
- Follow the diagram below to cut the new shape properly.
- Repeat three more times with the other corners of the rectangle.

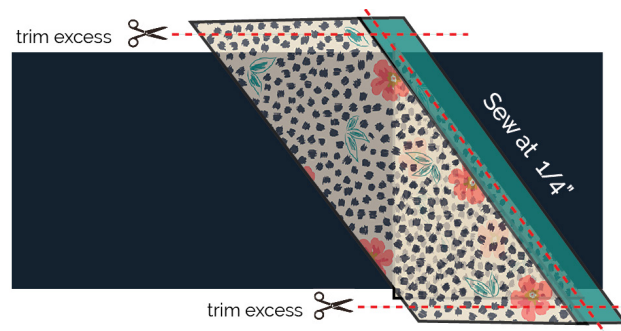


DIAGRAM 1

- You should end up with two 10 1/2 x 4 1/2 rectangles, as diagram shows:



DIAGRAM 2

- Now start with the sides.
- Join fabric **k** and **F** strips right sides together.
- Place the strips diagonally on top of fabric **B** 4 1/2" square facing right sides together. (refer to diagram).
- Stitch at 1/4" and trim excess fabric. (remember to trim the fabric leaving a perfect 4 1/2" square).

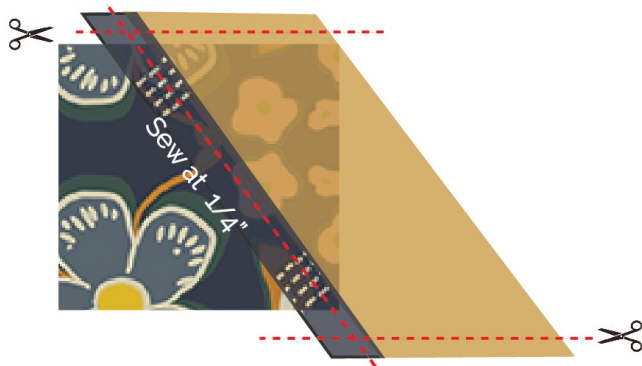


DIAGRAM 3

- Attach fabric **G** triangle using the same technique.
- Use the 3 1/2" x WOF rectangle to attach it to one of the corners of the 4 1/2" square.
- Trim excess fabric.
- Attach fabric **K** 4 1/2" x 1 1/2" strips.
- Your final shape should look like the diagram below:



DIAGRAM 4

- Repeat the same technique using fabric **E**, **B**, **G** and **K**.

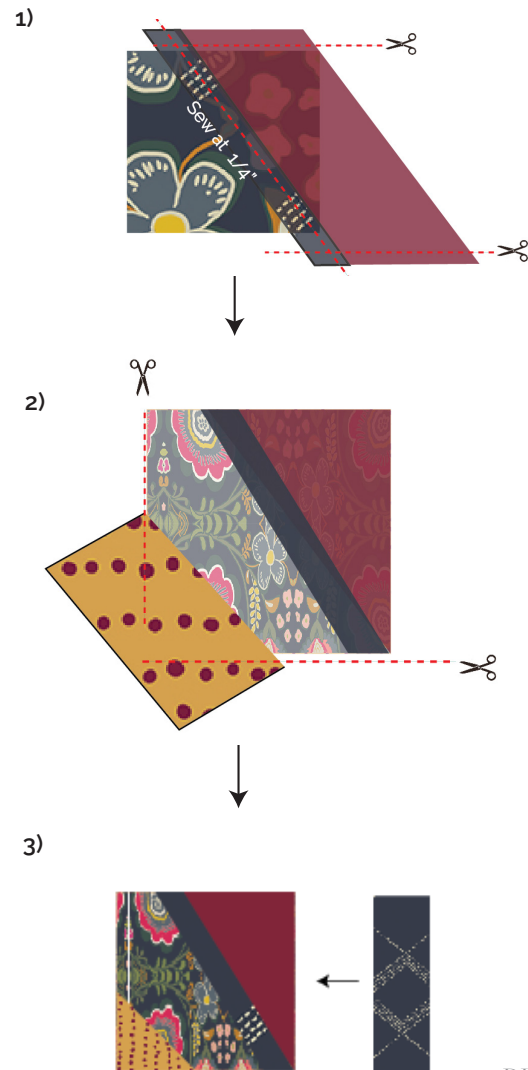


DIAGRAM 5

- Once you have all the blocks attach them to the center.
- Use the diagram below as a reference:



DIAGRAM 6

- Repeat the same process using fabric **B** 4 1/2' x 3 1/2' rectangles.
- Remember to use fabric **I** strips
- Your blocks should now be rectangles of 4 1/2' x 3 1/2'.
- After you finish creating the new blocks you should be half way through finishing the table runner.
- Refer to the diagram below to double check if you have everything correct.



DIAGRAM 7

- Attach the rest of fabric **A and B** strips around the center.
- Follow the diagram below:



DIAGRAM 8

- Great! you are almost done with the table runner.
- Its time to use all the templates you cut to shape the triangular corners.
- The templates below are numbered, this will make the process even easier for you!
- They might not look completely triangular. Trim the patchwork using a roler cutter and a ruler to perfect your triangle.

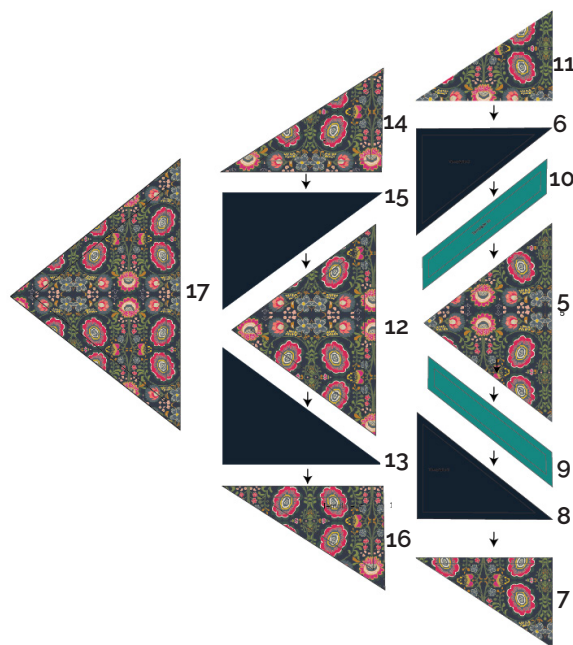


DIAGRAM 9

- Use the fabric **A** 1 x WOF strips to create the outer edges around the triangular corners.
- A nice touch to your table runner would be adding two tassels in each point. You can create them with embroidery thread or look for them in any fabric supply shop.
- It's time for some fun! using steam- a- seam paper fusible for the applique placement.
- Refer to the picture above or the diagram below for the proper placement. Remeber that you are free to decorate the tablerunner however you want!



DIAGRAM 10

FINAL ASSEMBLY

Sew rights sides together.

- Place BACKING FABRIC on top of the right side of your table runner.
- Pin both layers together and stitch at a 1/4" seam allowance.
- Leave a small opening and flip right side out, making sure the corners are turned out nicely.
- Hand stitch the opening and your table runner should be ready, enjoy!



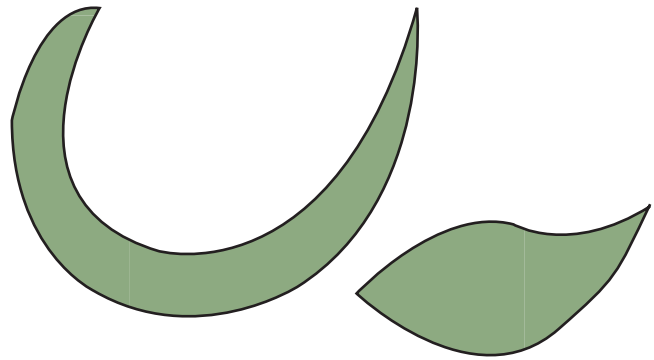
artgalleryfabrics.com

NOTE:

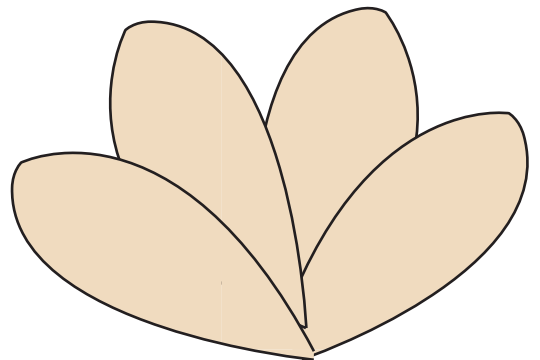
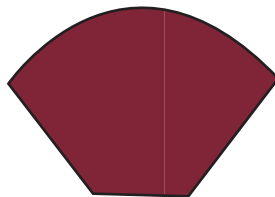
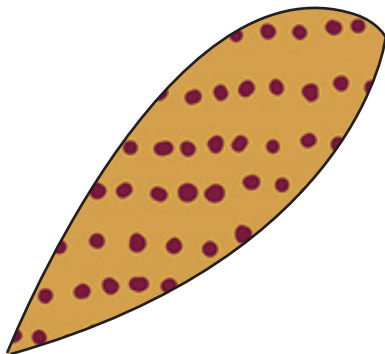
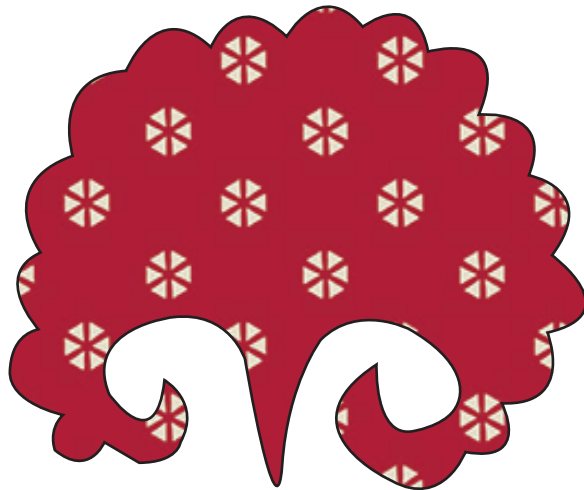
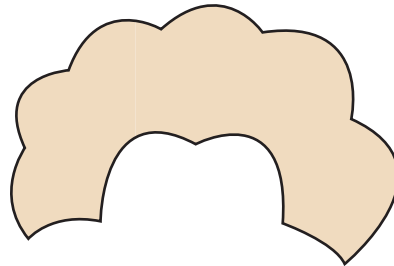
While all possible care has been taken to ensure the accuracy of this pattern, We are not responsible for printing errors or the way in which individual work varies.

Please read instructions carefully before starting the construction of this quilt. If desired, wash and iron your fabrics before starting to cut.

Flower applique



cut 2 of each one





Template 12



Template 11



Template 7

Template 15

