

# Lady Autumn





PILLOW DESIGNED BY AGF STUDIO



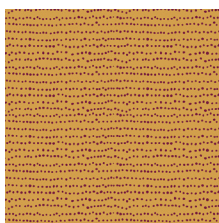
# INDIEfolk

FABRICS DESIGNED BY PAT BRAVO

MEMORIES



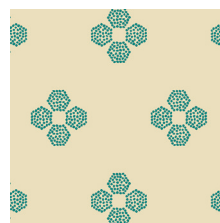
IFL-46300  
KHOKHLOMA BURGUNDIA



IFL-46301  
FLECKS AUBURN



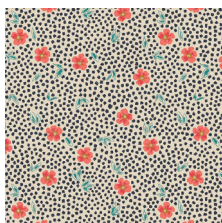
IFL-46302  
MEADOW DIM



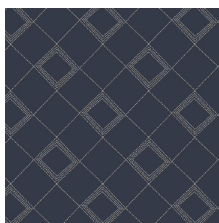
IFL-46303  
DROPLET PETAL MALACHITE



IFL-46304  
TRINKET VIVID



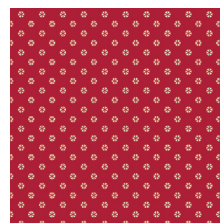
IFL-46305  
MIST FLORA LUMINOUS



IFL-46307  
TARTAN MIDNIGHT



IFL-46308  
VERDANT BLOOM



IFL-46309  
WHIRL ROUGE

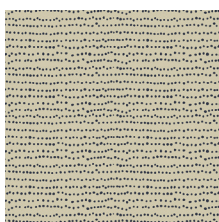


IFL-46310  
TRŮJKAT SUNRISE

FABLES



IFL-56300  
KHOKHLOMA GLOOM



IFL-56301  
FLECKS INDIGO



IFL-56302  
MEADOW VIVID



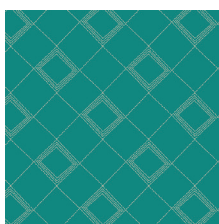
IFL-56303  
DROPLET PETAL STORM



IFL-56304  
TRINKET BLUSH



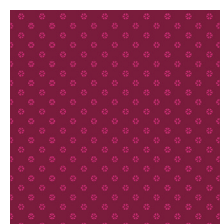
IFL-56306  
PATHWAYS RICH



IFL-56307  
TARTAN TEAL



IFL-56308  
POWDER BLOOM



IFL-56309  
WHIRL MAUVE



IFL-56310  
TRŮJKAT DESERT



FEEL THE DIFFERENCE © 2015 Courtesy of Art Gallery Quilts LLC. All Rights Reserved.



FINISHED SIZE | 15" x 30"

## FABRIC REQUIREMENTS

Fabric <b>A</b>	IFL-56309	1/2 yd
Fabric <b>B</b>	IFL-46309	FE
Fabric <b>C</b>	IFL-46300	FE
Fabric <b>D</b>	IFL-46305	FE
Fabric <b>E</b>	PE-421	FE
Fabric <b>F</b>	PE-428	FE
Fabric <b>G</b>	PE-427	FE
Fabric <b>H</b>	PE-463	FE

### BACKING FABRIC

Fabric **A** IFL-56309 (Included)

## CUTTING DIRECTIONS

*1/4" seam allowances are included.  
WOF means width of fabric.*

Cut two (2) template 1 ON FOLD from Fabric **A**.

Cut one (1) template 3 ON FOLD from Fabric **B**.

Cut one (2) template 10 from Fabric **C**.

Cut one (1) template 5 from Fabric **D**.

Cut one (1) template 2 ON FOLD from Fabric **E**.

Cut two (2) template 7 from Fabric **F**.

Cut one (1) template 6 from Fabric **G**.

Cut two (2) template 9 from Fabric **H**.

Cut two (2) template 10 from Fabric **H**.

## CONSTRUCTION

*Sew all right sides together with 1/4" seam allowance.*

Place templates **2** and **3** centered on top of template **1**. (templates should be in fabrics **A**, **E** and **B**)

- Topstitch leaving 1/4" seam allowance.
- Refer to the diagram for fabric placement.



DIAGRAM 1

- Once fabrics are sewn together you can unravel the seam allowance fabric using a pin to create a folk texture around the edges.
- If you want add tassels at the top and bottom of your pillow. You can create them yourself easily with embroidery thread or find them at any fabric supply store.
- If you are adding the tassels remember to attach them at 1/4" from the edges of the front pillow.
- Add the rest of the templates to create the florals on top of template 3.
- Use steam a seam stick fusible to add stability to the small templates. It will also help you place them properly on top of the pillow.
- Remember to use your own creativity to create the design on top of the pillow! if you want, add more leaf templates or flowers to decorate it. We would love to see your creation!

- Follow the diagram to create your pillow front using all the templates..



DIAGRAM 2

- Once you place the templates as you desire, give them a top stitch around the edges to hold them in place. It would be nice to use contrasting color threads to add dimension to the design.

## FINAL ASSEMBLY

*Sew rights sides together.*

- Place BACKING FABRIC (template 1) wrong side up.
- Pin both layers together and stitch at a 1/4" seam allowance.
- leave a 3" in opening to fill your pillow with foam.
- Hand stitch the opening and your pillow should be ready, enjoy!



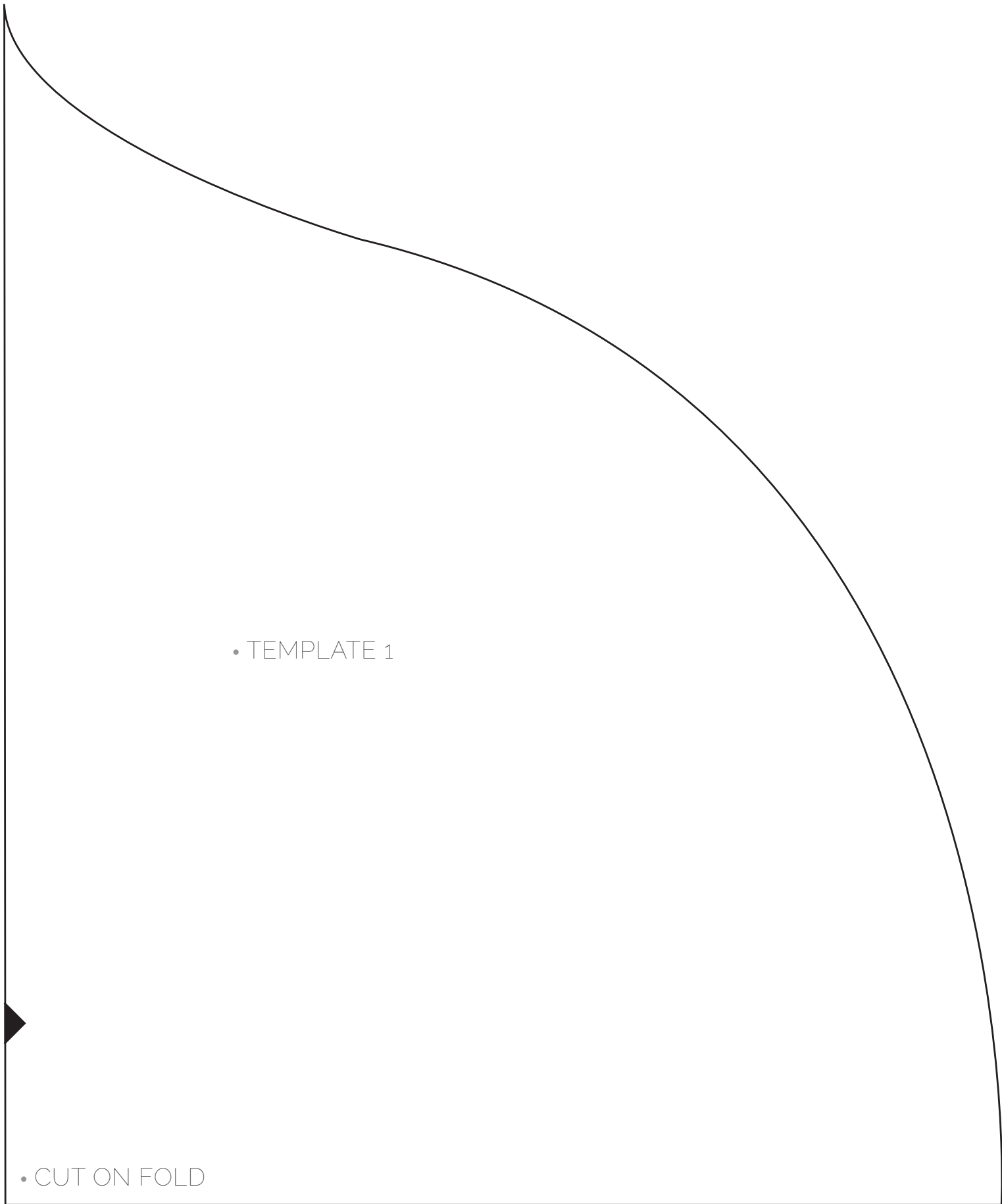
[artgalleryfabrics.com](http://artgalleryfabrics.com)

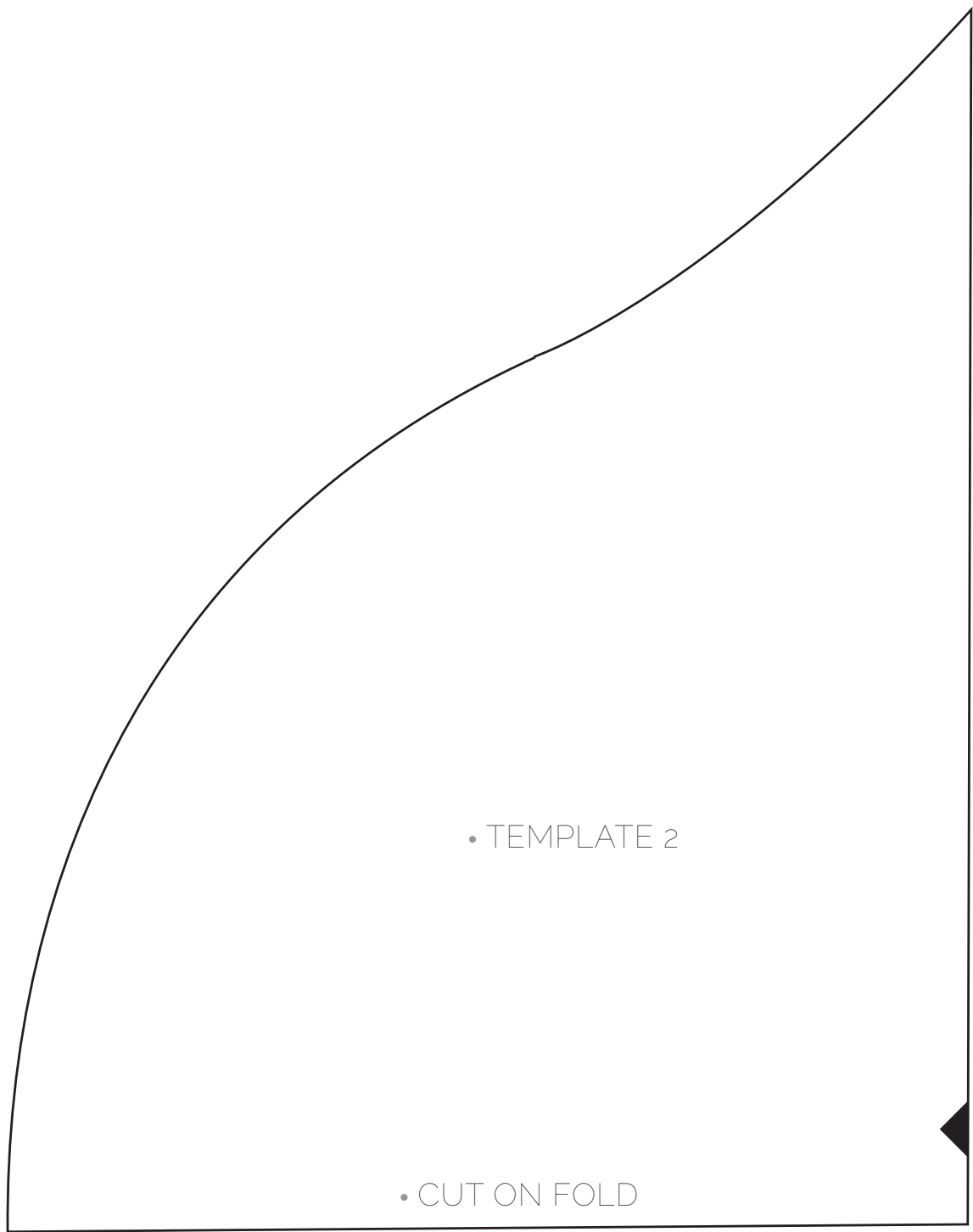
### NOTE:

*While all possible care has been taken to ensure the accuracy of this pattern, We are not responsible for printing errors or the way in which individual work varies.*

*Please read instructions carefully before starting the construction of this quilt. If desired, wash and iron your fabrics before starting to cut.*



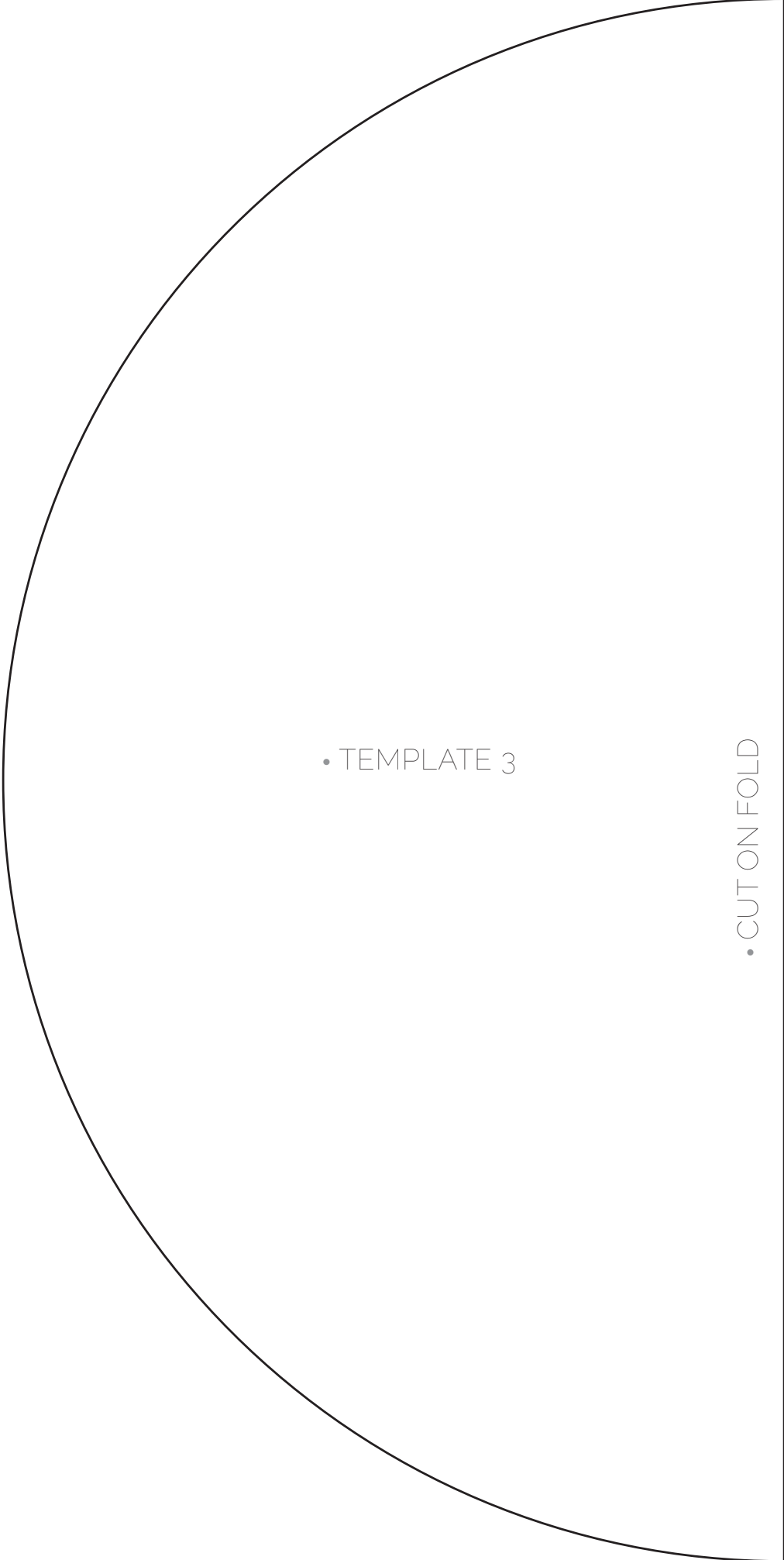




• TEMPLATE 2

• CUT ON FOLD

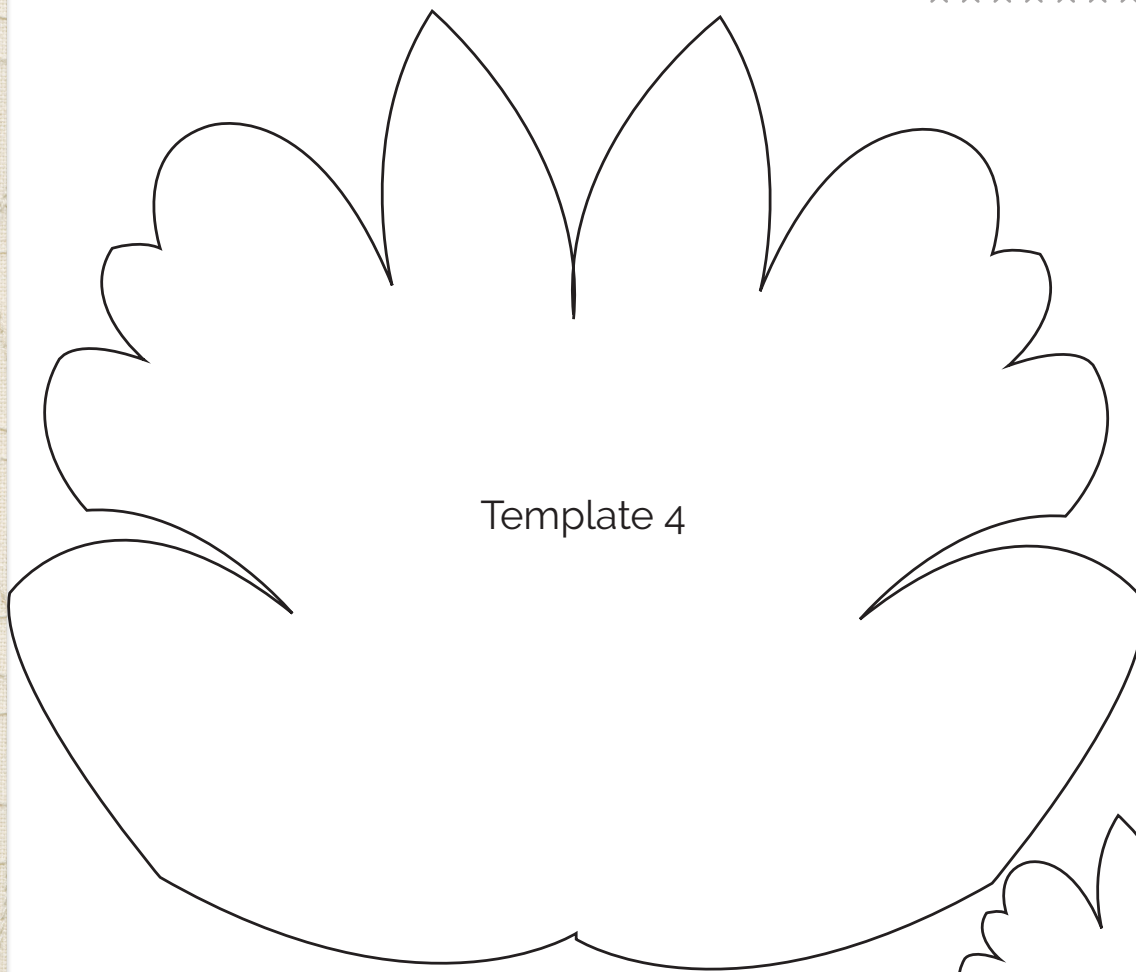




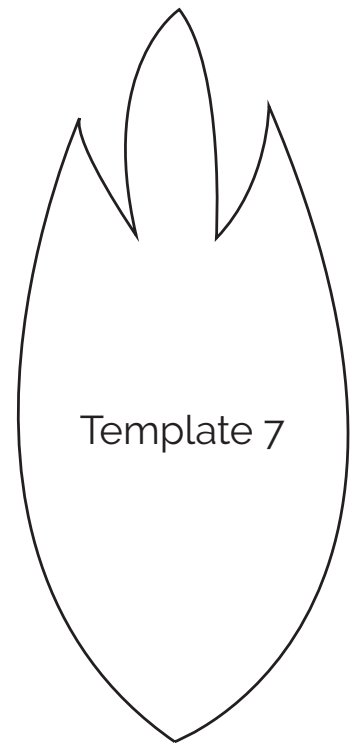
• TEMPLATE 3

• CUT ON FOLD

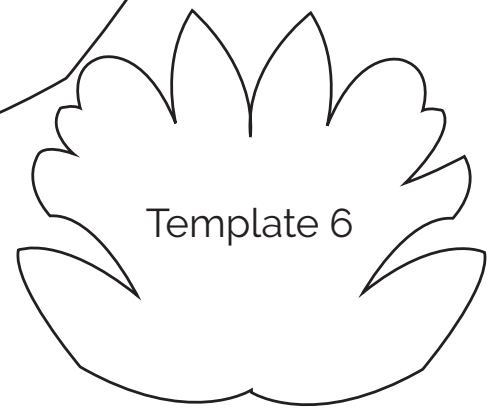
Downloaded from <https://www.cambridge.org/core>. University of Cambridge, on 02 Jun 2020 at 10:00:00, subject to the Cambridge Core terms of use, available at <https://www.cambridge.org/core/terms>. <https://doi.org/10.1017/S0022216X20000509>



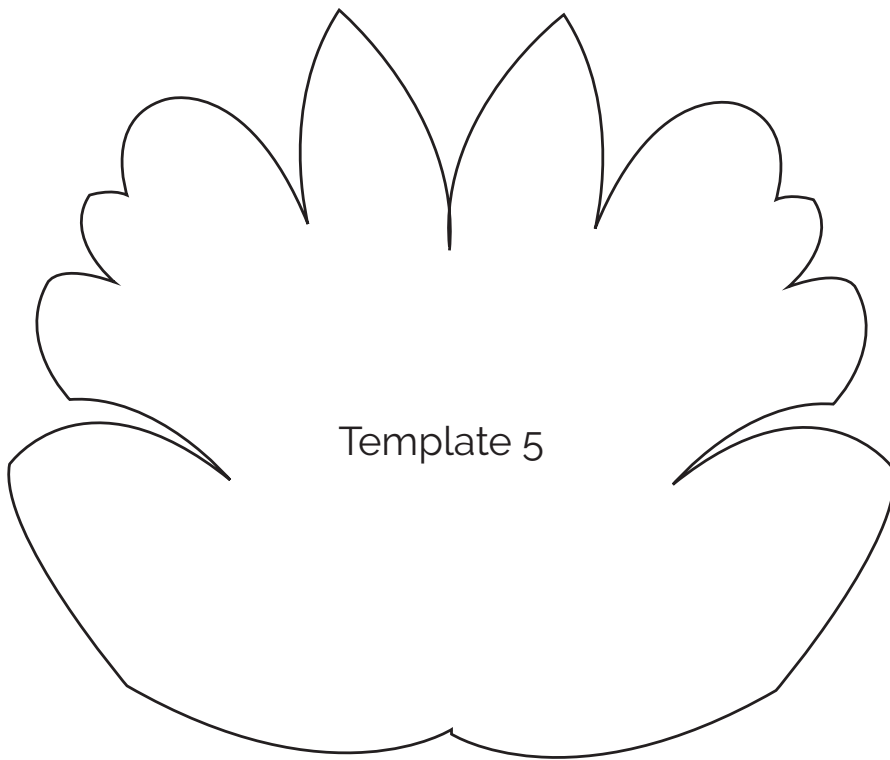
## Template 4



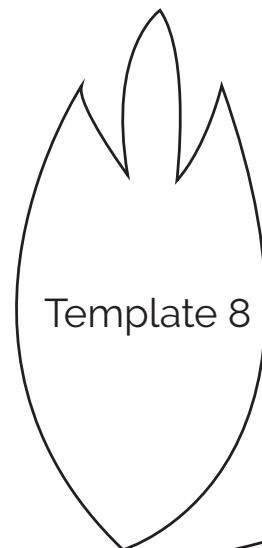
## Template 7



## Template 6



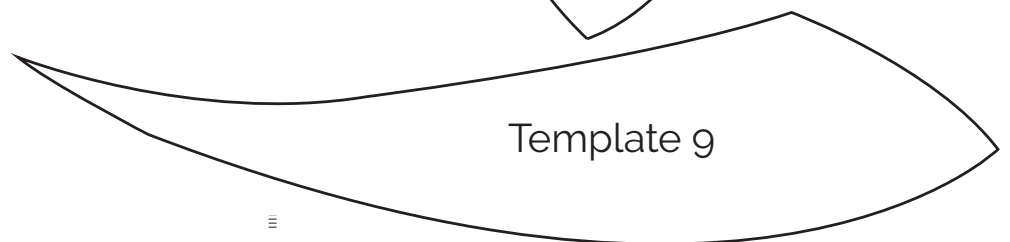
## Template 5



## Template 8



# Template 10



## Template 9