

XXXXXX

XXXXXX



✕ ✕ ✕ ✕ ✕ ✕ ✕ ✕ ✕ ✕ ✕ ✕ ✕ ✕ ✕ ✕ ✕ ✕ ✕





DESIGNED BY AGF STUDIO



FABRICS DESIGNED BY KATARINA ROCCELLA

EXOTICARIA



EST-76500
CAMOUFLAGE MIMICRY



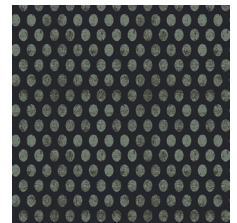
EST-76501
AMBERED BUGS STONE



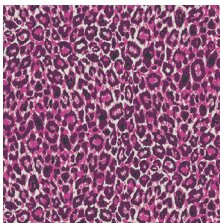
EST-76502
TROPICALIA LIGHT



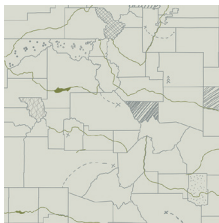
EST-76503
DINOMANIA SUBTLE



EST-76504
STRAIGHT HATCH LAVA



EST-76505
LEOPARDESS



EST-76508
DINOTRACKS DAY



EST-76509
PLANTAE SUNRISE

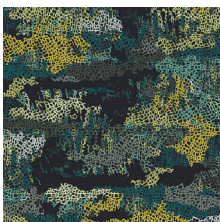


EST-76510
TRICERATOPS PINK

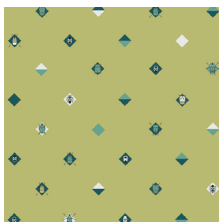


EST-76511
DINOSAURIA

ANOMALIA



EST-86500
CAMOUFLAGE PRETENSE



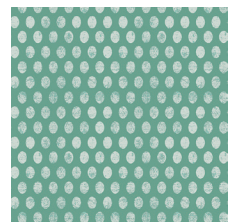
EST-86501
AMBERED BUGS KAKI



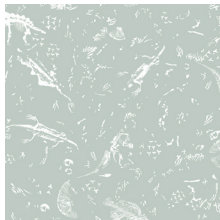
EST-86502
TROPICALIA DARK



EST-86503
DINOMANIA NEON



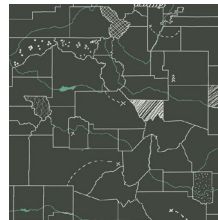
EST-86504
STRAIGHT HATCH AQUA



EST-86506
ARCHOSAUROSSILLS



EST-86507
TRICERATOPS OLIVE



EST-86508
DINOTRACKS NIGHT



EST-86509
PLANTAE AURORA



EST-86510
TRICERATOPS PETROLIUM



FEEL THE DIFFERENCE © 2017 Courtesy of Art Gallery Quilts LLC. All Rights Reserved.



FINISHED SIZE | 15" x 30"

FABRIC REQUIREMENTS

Fabric A	PE-427	1/3 yd.
Fabric B	PRE-811	FE
Fabric C	PE-428	FE
Fabric D	EST-86503	FE
Fabric E	EST-86502	FE
Fabric F	DEN-S-2002	FE
Fabric G	EST-86506	FE
Fabric H	EST-86510	FE
Fabric I	PE-464	FE
Fabric J	PE-405	FE
Fabric K	PE-412	FE

BACKING FABRIC

PE-427. (Suggested)

CUTTING DIRECTIONS

1/4" seam allowances are included.
WOF means width of fabric.

- Fabric **A**:
- Cut two (2) template 3
- Cut two (2) 2 1/2 x WOF
- Fabric **B**:
- Cut three (3) 1 1/2 x 18 strips
- Fabric **C**:
- Cut one (1) 1 1/2 x 18 strip
- Cut three (3) 1 x 18 strips
- Fabric **D**:
- Cut three (3) 1 1/2 x 18
- Cut two (2) 1 x 18 strips
- Fabric **E**:
- Cut eight (8) 1 1/2 x 18 strips.
- Cut three (3) 1 x 18 strips.

- Fabric **F**:
- Cut two (2) 1 1/2 x 18 strips
- Cut two (2) 1 x 18 strips
- Fabric **G**:
- Cut three (3) 1 x 18 strips
- Fabric **H**:
- Cut three (3) 1 x 18 strips
- Fabric **I**:
- Cut five (5) 1 1/2 x 18 strips
- Fabric **J**:
- Cut four (4) 1 x 18 strips.
- Fabric **K**:
- Cut one (1) 1 1/2 x 18 strip
- Cut three (3) 1 x 18 strips

CONSTRUCTION

Sew all rights sides together with 1/4" seam allowance.

- Join strips of fabrics **B, C, D, E, F, G, H, I, and J**.
- Refer to the diagram below for correct fabric placement.

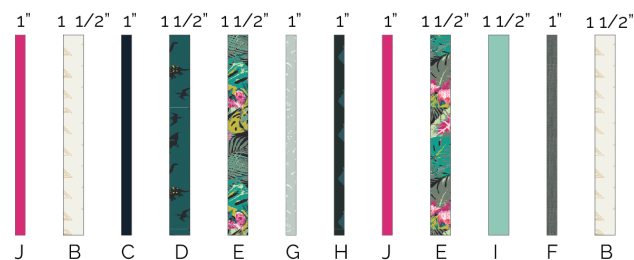


DIAGRAM 1

- Once all fabric strips are sewn together, use template 1 to cut your new triangular shape. Your shape should be similar to the diagram provided below
- Repeat the same process three (3) times.



DIAGRAM 2

- Once you are done, repeat the same process with fabrics **C,D, E, F, I, J and K**
- For fabric placement and cutting, follow Diagram 3.

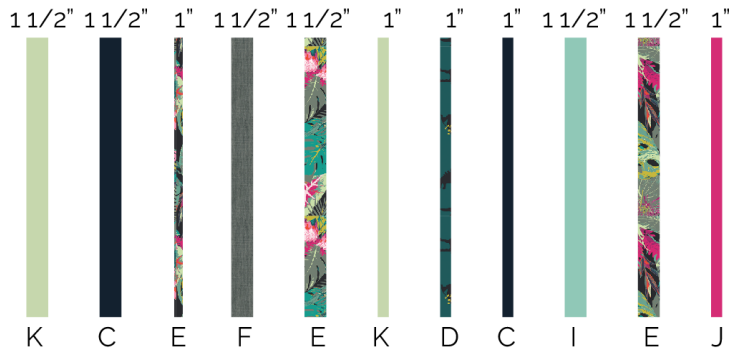


DIAGRAM 3

- Once all fabric strips are sewn together, use template 2 to cut your new triangular shape. Your shape should be similar to the diagram provided below.
- Repeat the same process two (2) times.



DIAGRAM 4

- Use Fabric A 2 1/2' x WOF to connect the triangles.
- Sew the first triangle with the strip and trim excess fabric. Repeat until you are done attaching all the triangles.

Step 1



Step 2



Until you finish the triangles



- Proceed attaching template 3 triangles on the sides of the pillow front. Refer to the diagram below:



DIAGRAM 5

QUILT ASSEMBLY

Sew rights sides together.

- Place BACKING FABRIC on a large surface wrong side up. Stretch it with masking tape against that surface.
- Place BATTING on top of backing fabric.
- Place TOP on top of the batting with right side facing up. Smooth away wrinkles using your hands.

CREATING THE BACK PILLOW

- To make a envelope back for your pillow Cut two 18" x 15" fabric **A** rectangles and fold on the side of each rectangle in 1/2" and press and then fold another 1/2" and press.
- Top-stitch as close to the edge as possible. Place rectangles right side together on top of each other to the front of your pillow and stitch all the way around your pillow at 1/4" seam allowance.
- Clip corners at seam allowance and flip piece to the right side of the fabric.
- Fill pillow with a 15 x 30" pillow form and enjoy!

XXXXXXXXXXXXXXXXXXXXXXXXXXXX

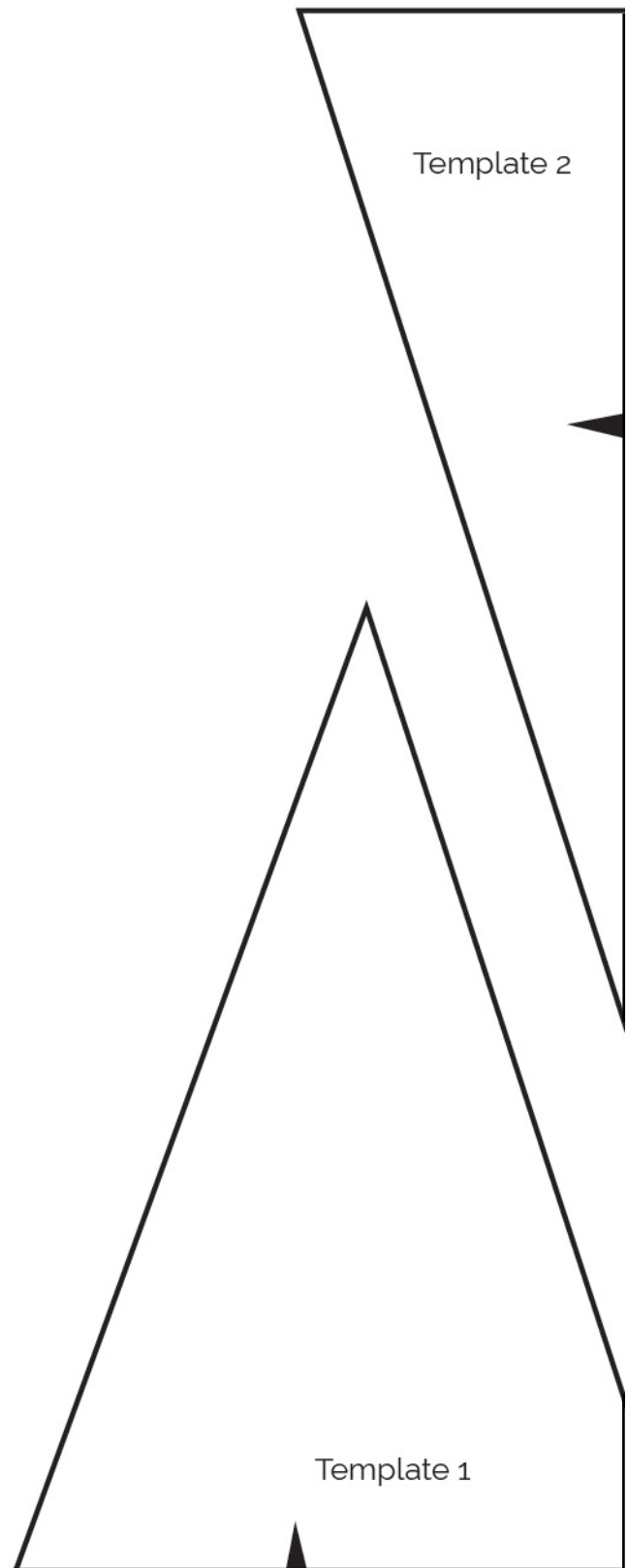
*Congratulations
& enjoy*

XXXXXXXXXXXXXXXXXXXXXXXXXXXX



artgalleryfabrics.com

NOTE: While all possible care has been taken to ensure the accuracy of this pattern, We are not responsible for printing errors or the way in which individual work varies. Please read instructions carefully before starting the construction of this quilt. If desired, wash and iron your fabrics before starting to cut.



Template 1

Template 1

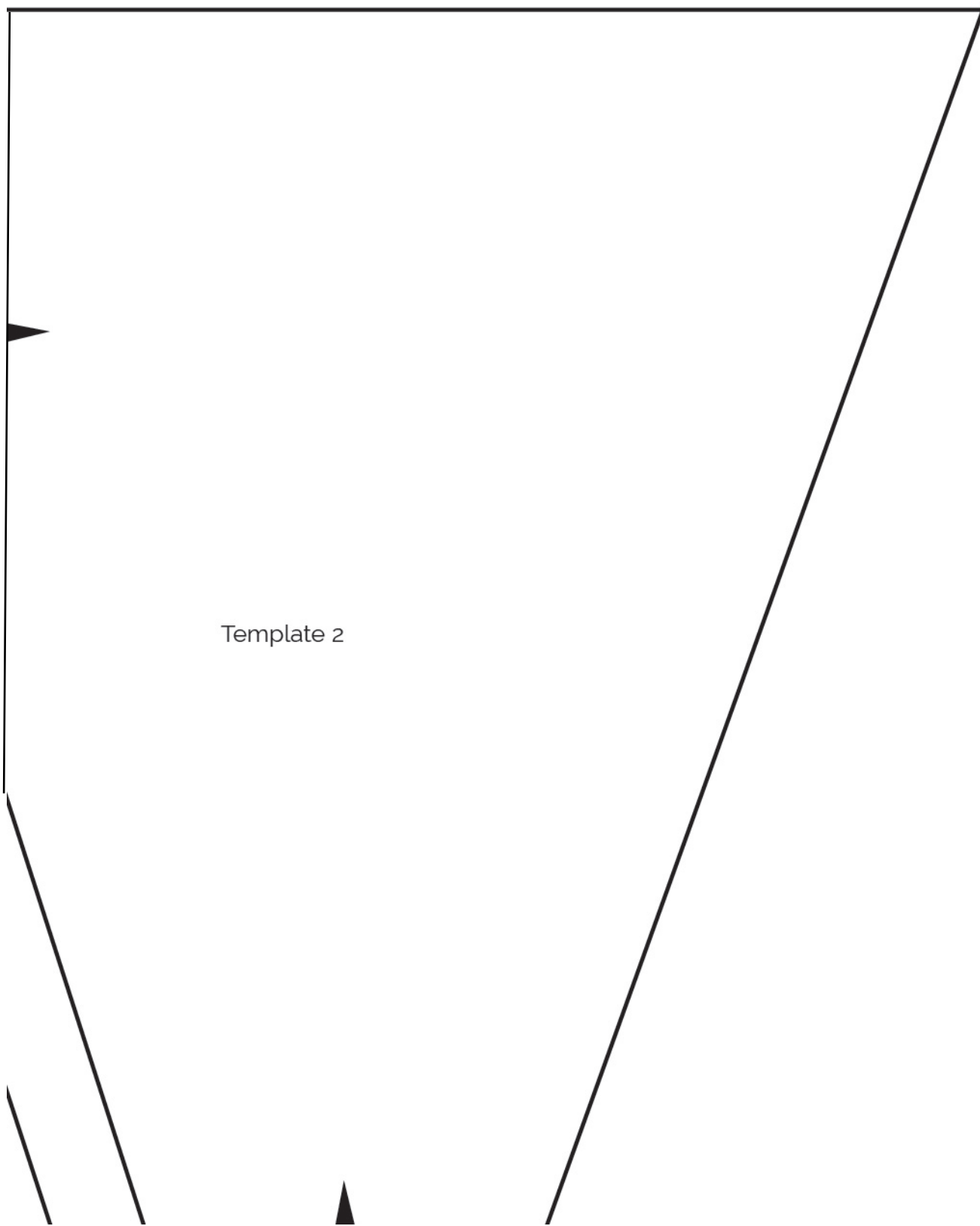
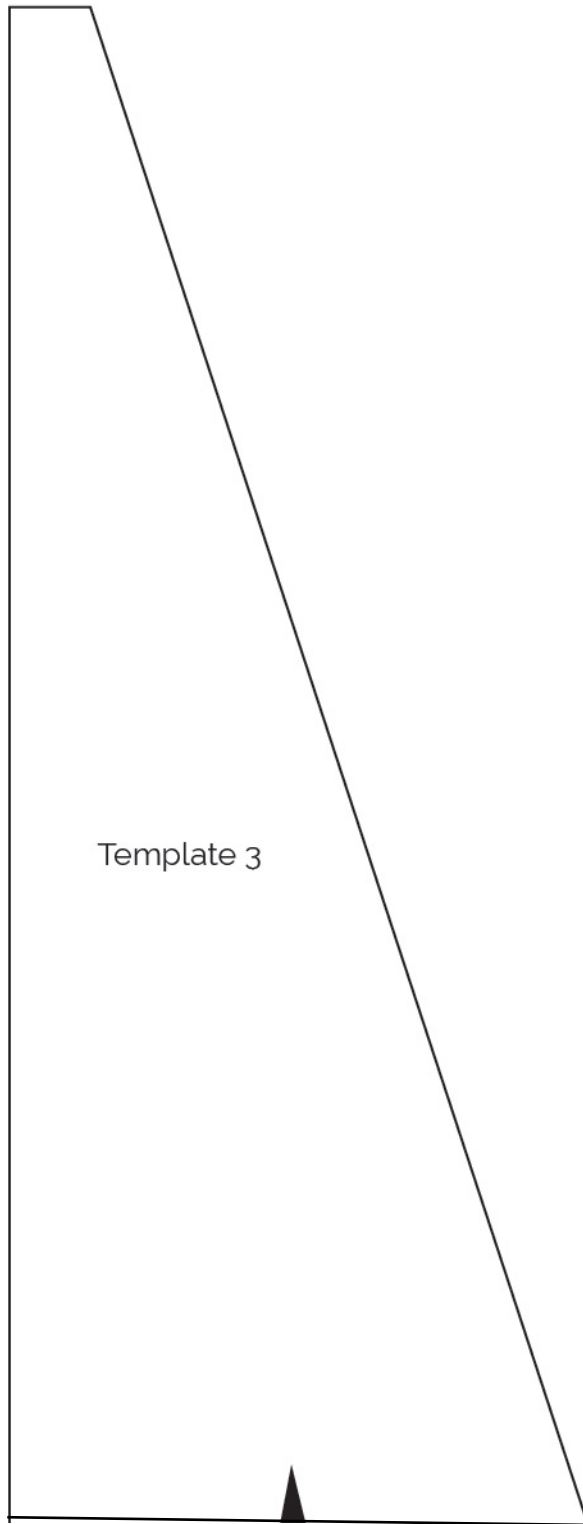


Diagram illustrating two templates, Template 1 and Template 2, within a rectangular frame.

- Template 1:** A large, dark gray, downward-pointing triangle that occupies the lower half of the frame. An arrow points to its left side.
- Template 2:** A smaller, dark gray, downward-pointing triangle located within the upper half of the frame, above Template 1. An arrow points to its top side.





Template 3