

X
X
X
X
X
X
X
X
X
X
X
X

A close-up photograph of a quilted pillow. The pillow features a vibrant tropical print with pink flowers, green leaves, and palm fronds on a white background. This patterned fabric is bound with a grey fabric featuring a chevron or zigzag pattern, which is quilted with visible stitching. The pillow is resting on a dark, textured surface, likely asphalt, with some dry leaves and small green plants visible in the background.

XXXXXXXXXXXXXXXXXXXXXXXXXXXX



Tropical Feet



FABRICS DESIGNED BY KATARINA ROCCELLA

EXOTICARIA



EST-76500
CAMOUFLAGE MIMICRIES



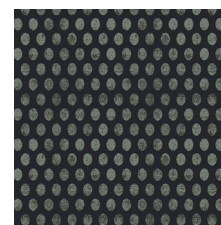
EST-76501
AMBERED BUGS STONE



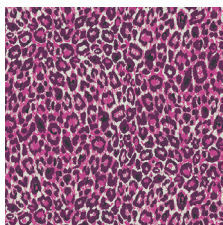
EST-76502
TROPICALIA LIGHT



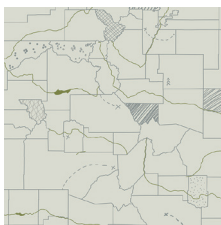
EST-76503
DINOMANIA SUBTLE



EST-76504
STRAIGHT HATCH LAVA



EST-76505
LEOPARDESS



EST-76508
DINOTRAILS DAY



EST-76509
PLANTAE SUNRISE

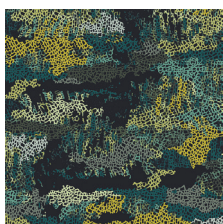


EST-76510
TRICERATOPS PINK

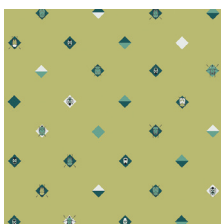


EST-76511
DINOSAURIA

ANOMALIA



EST-86500
CAMOUFLAGE PRETENSE



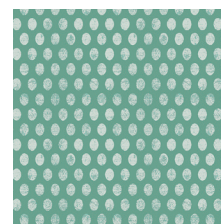
EST-86501
AMBERED BUGS KAKI



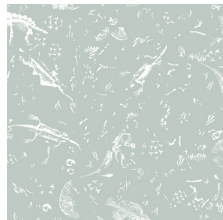
EST-86502
TROPICALIA DARK



EST-86503
DINOMANIA NEON



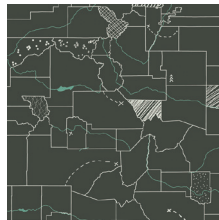
EST-86504
STRAIGHT HATCH AQUA



EST-86506
ARCHOSAUROSSILS



EST-86507
TRICERATOPS OLIVE



EST-86508
DINOTRAILS NIGHT



EST-86509
PLANTAE AURORA



EST-86510
TRICERATOPS PETROLIUM



FEEL THE DIFFERENCE © 2017 Courtesy of Art Gallery Quilts LLC. All Rights Reserved.

Tropical Feel

CONSTRUCTION

FINISHED SIZE | 21" x 14"

FABRIC REQUIREMENTS

Fabric **A** EST-76502 1 1/8 yd.
Fabric **B** DEN-S-2005 3/8 yd.

BACKING FABRIC
EST-76502 (Included)

CUTTING DIRECTIONS

1/4" seam allowances are included.
WOF means width of fabric.

- Three (3) WOF x 1 7/8" strips from fabric **A**.
- Three (3) WOF x 3" strips from fabric **A**.
Subcut twelve (12) rectangles of 3" x 5 3/4"
Subcut four (4) rectangles of 1 1/2" x 5 3/4"
- Two (2) WOF x 2 3/4" strips from fabric **A**.
Subcut sixteen (16) rectangles of 2 3/4" x 4 1/2"
Subcut four (4) rectangles of 5 3/4" x 1 1/8"
- Two (2) WOF x 2" strips from Fabric **A**.
Subcut eight (8) rectangles of 2" x 5 3/4"
- Eleven (11) WOF x 1 1/4" strips from Fabric **B**.
Subcut eight (8) strips of 1 1/4" x 4 1/2"
Subcut forty four (44) strips of 1 1/4" x 5 3/4"

BLOCK 1

- Start by pairing three (3) strips of WOF x 1 7/8" from Fabric **A** with two (2) strips of WOF x 1 1/4" from Fabric **B** as Follow:



DIAGRAM 1

- Now, take the piece and rotate it so you have the strips facing vertically and place the 3 1/2" perfect square pattern (rotated as diagram below), right on the center, making sure the top and bottom point are on the middle of Fabric **A** strip.
- Trim piece so you have a 3 1/2" perfect square piece.
- Repeat same process until you have eight (8) flower pieces from Block 1



DIAGRAM 2

BLOCK 2

- Pair one (1) strip of WOF x 3" from Fabric **A** with one (1) strip of WOF x 1 1/4" from Fabric **B** as follow:



DIAGRAM 3

- Now, pair two (2) strips of 2 3/4" x 4 1/2" from Fabric **A** with one (1) strip of 1 1/4" x 4 1/2" from Fabric **B**



DIAGRAM 4

- Now, rotate the second piece facing strips vertically, and pair with the first piece, creating a "T" with Fabric **B**



DIAGRAM 5

- Place the 3 1/2" square pattern (rotating it as image below), making sure you're placing the point edges right on the middle of Fabric **B** strips

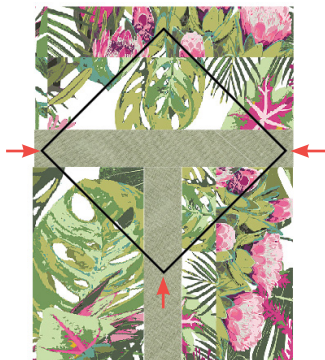


DIAGRAM 6

- Repet same process until you have eight (8) floral pieces from Block 2

BLOCK 3

- Pair one (1) 5 3/4" x 3" rectangle, one (1) 5 3/4" x 1 1/8" rectangle and one (1) 5 3/4" x 1 1/2" from Fabric **A**, with two (2) 5 3/4" x 1 1/8" strips from Fabric **B**



DIAGRAM 7

- Place the 3 1/2" square pattern (rotating it as image below), making sure you're placing the point edges right on the middle of Fabric **B** strips

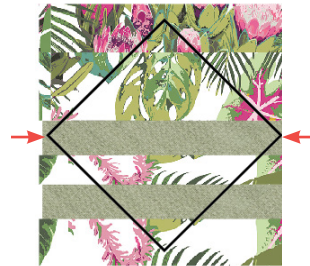


DIAGRAM 8

- Repet same process until you have four (4) floral pieces from Block 3

BLOCK 4

- Pair two (2) 5 3/4" x 2" rectangles from Fabric **A** with three (3) strip of 5 3/4" x 1 1/4" from Fabric **B**

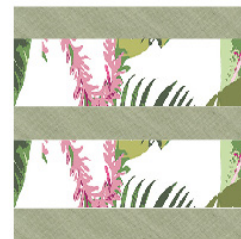


DIAGRAM 9

- Now, take the piece and rotate it so you have the strips facing vertically and place the 3½ perfect square pattern (rotated as diagram below), right on the center, making sure the top and bottom point are on the middle of Fabric A strip.



DIAGRAM 10

- Repet same process until you have four (4) floral pieces from Block 4

ASSEMBLING THE TOP

- Follow diagram below for the blocks assembly:

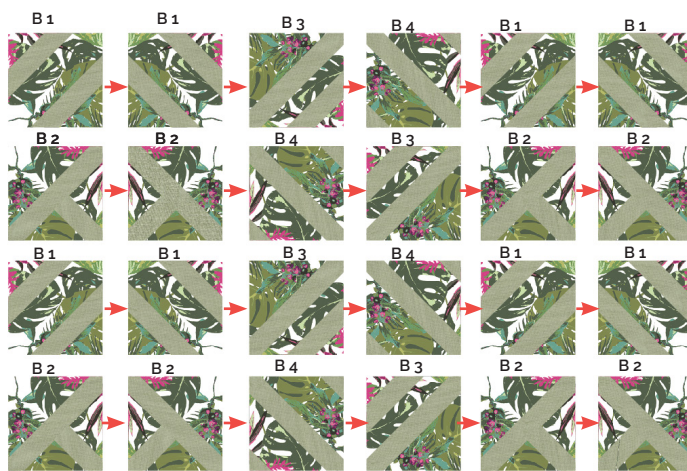


DIAGRAM 11

- Now, follow diagram below for the rows assembly:

XX

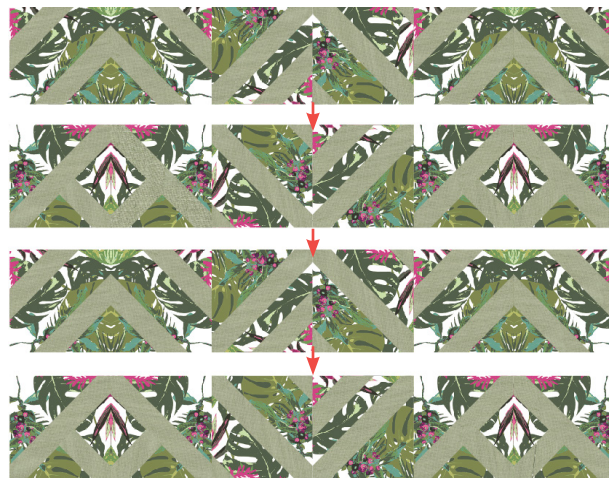


DIAGRAM 12

CREATING THE BACK PILLOW

*Sew all rights sides together with ¼" seam allowance.
Press open.*

- To make a envelope back for your pillow take both 14" x 17" rectangles and fold one 17" side on each rectangle in 1/2" and press and then fold another 1/2" and press.
- Top stitch as close to the edge as possible.
- Place rectangles right side together on top of each other to the front of your pillow and stitch all the way around your pillow at ¼" seam allowance.
- Clip corners at seam allowance and flip piece to the right side of the fabric.
- Fill pillow with a 21" x 14" pillow form and enjoy!

XXXXXXXXXXXXXXXXXXXXXXXXXXXXXXXXXXXX

Congratulations & enjoy

XXXXXXXXXXXXXXXXXXXXXXXXXXXXXXXXXXXX



artgalleryfabrics.com

NOTE: While all possible care has been taken to ensure the accuracy of this pattern, We are not responsible for printing errors or the way in which individual work varies. Please read instructions carefully before starting the construction of this quilt. If desired, wash and iron your fabrics before starting to cut.

Pattern