

A circular quilted piece, likely a small rug or decorative mat, featuring a complex, symmetrical design. The center is a solid pink circle. Surrounding this is a ring of six black, teardrop-shaped petals. The next layer consists of twelve colorful, teardrop-shaped segments, each containing a different floral or abstract pattern in shades of red, green, yellow, and blue. These segments are arranged in a ring around the central pink circle. The entire design is enclosed within a wide orange border, which is further decorated with black teardrop shapes and pink lines. The piece is displayed on a plain white background.

Spring Mandala

DESIGNED BY AGF STUDIO



COLOR OPTION

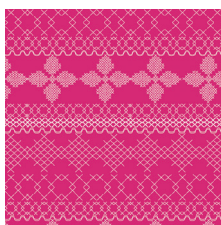


FABRICS DESIGNED BY BARI J.

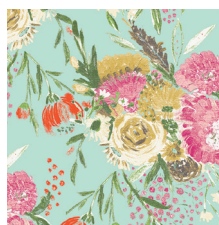
COME SHINE



WBL-12030
FLOWER SHOWER INTENSE



WBL-12031
CROSS & STITCH RASPBERRY



WBL-12032
SUMMER BOUQUET CLEAR



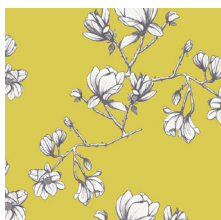
WBL-12033
LIVELY ROSEBUDS BURST



WBL-12034
CORSAGE CHARM PINK



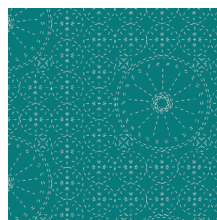
WBL-12035
LOWERFIELD SUNRISE



WBL-12036
MAGNOLIA STUDY ZEST



SGE-14457
EVERLASTING BLOOMS
CITRUS



SGE-14458
SASHIKO FLORETTE TEA

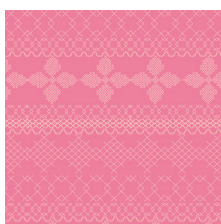


SGE-14459
STILL LIFE CRISP

COME RAIN



WBL-22030
FLOWER SHOWER SUBTLE



WBL-22031
CROSS & STITCH CANDY



WBL-22032
SUMMER BOUQUET POND



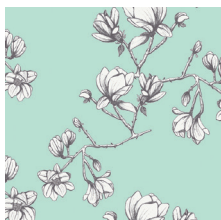
WBL-22033
LIVELY ROSEBUDS
CRYSTAL



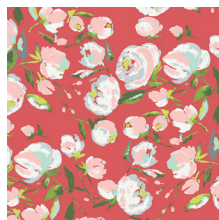
WBL-22034
CORSAGE CHARM AQUA



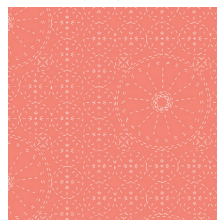
WBL-22035
FLOWERFIELD SUNSET



WBL-22036
MAGNOLIA STUDY FRESH



WBL-22037
EVERLASTING BLOOMS
BERRY



WBL-22038
SASHIKO FLORETTE CORAL



WBL-22039
STILL LIFE SWEET



FEEL THE DIFFERENCE © 2017 Courtesy of Art Gallery Quilts LLC. All Rights Reserved.

Spring Mandala

FABRIC REQUIREMENTS

Fabric A	WBL- 22038	1/16" yd
Fabric B	WBL-12030	FE
Fabric C	WBL-12038	FE
Fabric D	PE- 404	FE
Fabric E	PE - 471	5/8'yds
Fabric F	WBL- 451	FQ
Fabric G	Den-s-2008	FE
Fabric H	PE - 420	FE

BACKING FABRIC

WBL- 22038 (Fabric **A**) 5/8'yds (*Suggested*)

BINDING FABRIC

WBL- 22038 (Fabric **A**)

CUTTING DIRECTIONS

*1/4" seam allowances are included.
WOF means width of fabric.*

- Eight (8) template 1 from fabric **A**.
- Twenty (20) template 2 from fabric **B**.
- Four (4) of pattern 3 from fabric **C**.
- Eight (8) of pattern 4 from fabric **D**.
- Four (4) of pattern 2 from fabric **G**.
- Eight (8) of pattern 5 from fabric **G**

CONSTRUCTION

Sew right sides together.

- **Panel A:**
- Start with placement of fabric **A**, **D** and **G** over **pattern 1** circle (fabric **E**) (use templates 1, 3, and 4)
- Stitch templates with a zic zac stitch to give it texture, you can use contrasting colors too!
- Top stitch **template 4** with a regular stitch in the middle (stitch it two times so it is secure on top of the fabric).
- Fray/ unravel **template 4** to create a delicate texture.
- Refer to the diagram below for proper fabric placement.

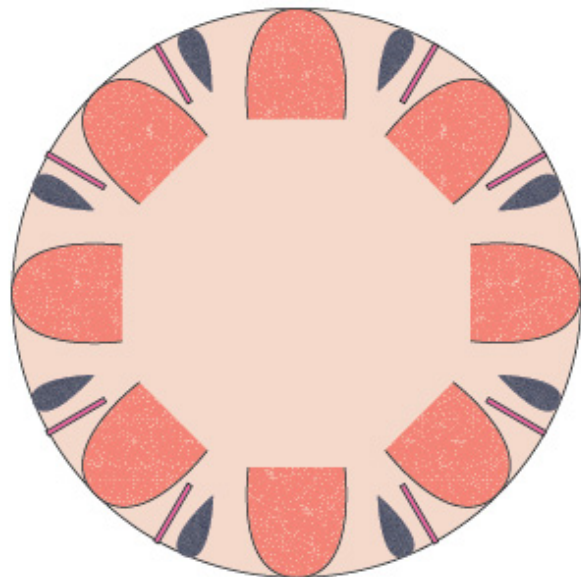


DIAGRAM 1

- **Panel B:**
- Place Fabric **F** circle (pattern 2) at the middle of Panel A.
- Once fabric **F** is properly placed use pins to hold it in place.
- Stitch the circular pattern with a zic zac stitch
- Place evenly the 20 pieces of **Template 2**.
- Start placing 4 at the top. Refer to the diagram below for proper placement.

QUILT ASSEMBLY

Sew rights sides together.

- Place BACKING FABRIC on a large surface wrong side up. Stretch it with masking tape against that surface.
- Place BATTING on top of backing fabric.
- Place TOP on top of the batting with right side facing up. Smooth away wrinkles using your hands.
- Pin all layers together and baste with basting thread using long stitches. You can also use safety pins to join the layers.
- Machine or hand quilt (if desired) starting at the center and working towards the corners. Remember that quilting motifs are a matter of personal preference. Have fun choosing yours!
- After you finished, trim excess of any fabric or batting squaring the mandala to proceed to bind it.

BINDING

included

- Cut enough strips $1\frac{1}{2}$ ' wide by the width of the fabric **A** to make a final strip 72' long. Start sewing the binding strip in the middle of one of the sides of the quilt, placing the strip right side down and leaving an approximated 5' tail. Sew with $\frac{1}{4}$ ' seam allowance (using straight stitch), aligning the strip's raw edge with the quilt top's raw edge.
- Stop stitching $\frac{1}{4}$ ' before the edge of the quilt. Clip the threads. Remove the quilt from under the machine presser foot. Fold the strip in a motion of 45° and upward, pressing with your fingers. Hold this fold with your finger, bring the strip down in line with the next edge, making a horizontal fold that aligns with the top edge of the mandala. Start sewing at $\frac{1}{4}$ ' of the border, stitching all the layers.
- Do the same around the circular shape
- Stop stitching before you reach the last 5 or 6 inches. Cut the threads and remove the quilt from under the machine presser foot. Lay the loose ends of the binding flat along the quilt edge, folding the ends back on themselves where they meet. Press them together to form a crease. Using this crease as the stitching line, sew the two open ends of the binding with right sides together (you can help yourself marking with a pencil if the crease is difficult to see).

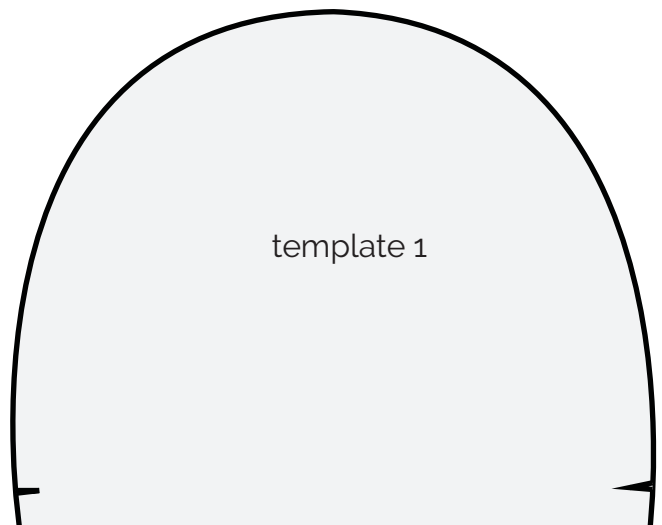
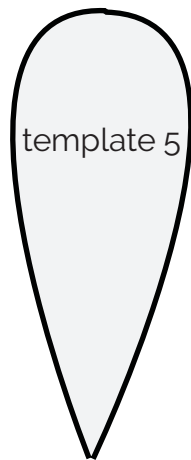
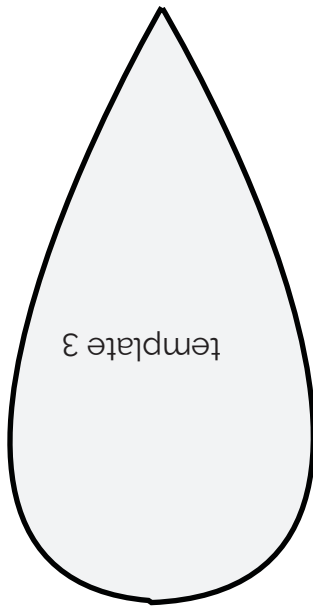
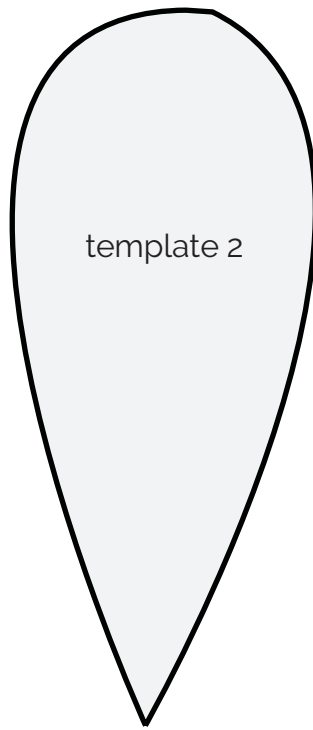
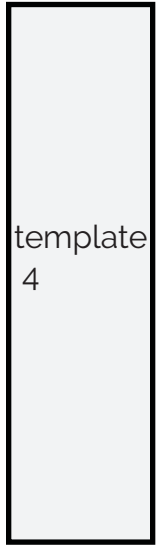
- XXXXXXXXXXXXXXXXXXXXXXXXXXXXXXXXXXXX
- Trim seam to $\frac{1}{4}$ ' and press open. Complete the sewing. Turn binding to back of the quilt, turn raw edge inside and stitch by hand using blind stitch.

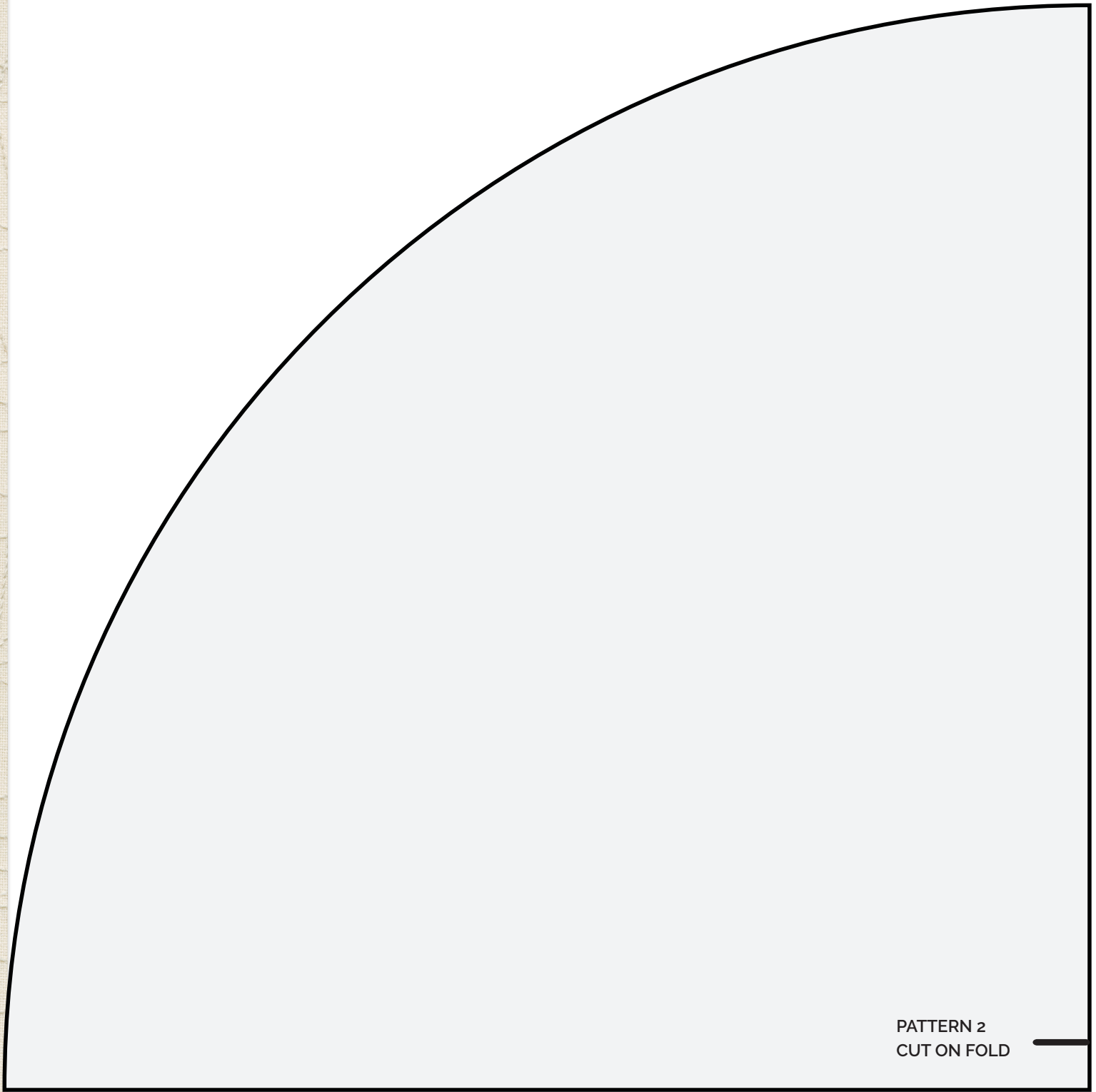


artgalleryfabrics.com

NOTE: While all possible care has been taken to ensure the accuracy of this pattern, We are not responsible for printing errors or the way in which individual work varies. Please read instructions carefully before starting the construction of this quilt. If desired, wash and iron your fabrics before starting to cut.

Pattern 3
CUT ON FOLD





PATTERN 2
CUT ON FOLD

PATTERN 1
CUT ON FOLD

x x

PATTERN 1
CUT ON FOLD

PATTERN 1
CUT ON FOLD

